



HAL
open science

GERO Cohort Protocol, Chile, 2017-2022: Community-based Cohort of Functional Decline in Subjective Cognitive Complaint elderly

A. Slachevsky, P. Zitko, D. Martinez-Pernia, G. Forno, F. A. Court, P. Lillo,
R. Villagra, C. Duran-Aniotz, T. Parrao, R. Assar, et al.

► To cite this version:

A. Slachevsky, P. Zitko, D. Martinez-Pernia, G. Forno, F. A. Court, et al.. GERO Cohort Protocol, Chile, 2017-2022: Community-based Cohort of Functional Decline in Subjective Cognitive Complaint elderly. *BMC Geriatrics*, 2020, 20 (1), pp.505. 10.1186/s12877-020-01866-4 . hal-03170724

HAL Id: hal-03170724

<https://hal.science/hal-03170724>

Submitted on 16 Mar 2021

HAL is a multi-disciplinary open access archive for the deposit and dissemination of scientific research documents, whether they are published or not. The documents may come from teaching and research institutions in France or abroad, or from public or private research centers.

L'archive ouverte pluridisciplinaire **HAL**, est destinée au dépôt et à la diffusion de documents scientifiques de niveau recherche, publiés ou non, émanant des établissements d'enseignement et de recherche français ou étrangers, des laboratoires publics ou privés.



Distributed under a Creative Commons Attribution 4.0 International License

STUDY PROTOCOL

Open Access



GERO Cohort Protocol, Chile, 2017–2022: Community-based Cohort of Functional Decline in Subjective Cognitive Complaint elderly

Andrea Slachevsky^{1,2,3,4,5*} , Pedro Zitko^{1,6,7}, David Martínez-Pernía^{1,3,8}, Gonzalo Forno^{1,2,3}, Felipe A. Court^{1,9,10}, Patricia Lillo^{1,11,12}, Roque Villagra^{1,13}, Claudia Duran-Aniotz⁸, Teresa Parrao^{1,14}, Rodrigo Assar^{1,15}, Paulina Orellana¹, Carolina Toledo¹, Rodrigo Rivera¹⁶, Agustín Ibañez^{8,17,18,19,20}, Mario A. Parra^{19,21}, Christian González-Billaut^{1,5,10,22}, Helena Amieva²³ and Daniela Thumala^{1,24}

Abstract

Background: With the global population aging and life expectancy increasing, dementia has turned a priority in the health care system. In Chile, dementia is one of the most important causes of disability in the elderly and the most rapidly growing cause of death in the last 20 years. Cognitive complaint is considered a predictor for cognitive and functional decline, incident mild cognitive impairment, and incident dementia. The GERO cohort is the Chilean core clinical project of the Geroscience Center for Brain Health and Metabolism (GERO). The objective of the GERO cohort is to analyze the rate of functional decline and progression to clinical dementia and their associated risk factors in a community-dwelling elderly with subjective cognitive complaint, through a population-based study. We also aim to undertake clinical research on brain ageing and dementia disorders, to create data and biobanks with the appropriate infrastructure to conduct other studies and facilitate to the national and international scientific community access to the data and samples for research.

(Continued on next page)

* Correspondence: andrea.slachevsky@uchile.cl

¹Geroscience Center for Brain Health and Metabolism (GERO), Santiago, Chile

²Neuropsychology and Clinical Neuroscience Laboratory (LANNEC),
Physiopathology Department - Institute of Biomedical Sciences (ICBM),
Neuroscience and East Neuroscience Departments, Faculty of Medicine,
University of Chile, Santiago, Chile

Full list of author information is available at the end of the article



© The Author(s). 2020 **Open Access** This article is licensed under a Creative Commons Attribution 4.0 International License, which permits use, sharing, adaptation, distribution and reproduction in any medium or format, as long as you give appropriate credit to the original author(s) and the source, provide a link to the Creative Commons licence, and indicate if changes were made. The images or other third party material in this article are included in the article's Creative Commons licence, unless indicated otherwise in a credit line to the material. If material is not included in the article's Creative Commons licence and your intended use is not permitted by statutory regulation or exceeds the permitted use, you will need to obtain permission directly from the copyright holder. To view a copy of this licence, visit <http://creativecommons.org/licenses/by/4.0/>. The Creative Commons Public Domain Dedication waiver (<http://creativecommons.org/publicdomain/zero/1.0/>) applies to the data made available in this article, unless otherwise stated in a credit line to the data.

(Continued from previous page)

Methods: The GERO cohort aims the recruitment of 300 elderly subjects (> 70 years) from Santiago (Chile), following them up for at least 3 years. Eligible people are adults not diagnosed with dementia with subjective cognitive complaint, which are reported either by the participant, a proxy or both. Participants are identified through a household census. The protocol for evaluation is based on a multidimensional approach including socio-demographic, biomedical, psychosocial, neuropsychological, neuropsychiatric and motor assessments. Neuroimaging, blood and stool samples are also obtained. This multidimensional evaluation is carried out in a baseline and 2 follow-ups assessments, at 18 and 36 months. In addition, in months 6, 12, 24, and 30, a telephone interview is performed in order to keep contact with the participants and to assess general well-being.

Discussion: Our work will allow us to determine multidimensional risks factors associated with functional decline and conversion to dementia in elderly with subjective cognitive complain. The aim of our GERO group is to establish the capacity to foster cutting edge and multidisciplinary research on aging in Chile including basic and clinical research.

Trial registration: [NCT04265482](https://clinicaltrials.gov/ct2/show/study/NCT04265482) in ClinicalTrials.gov. Registration Date: February 11, 2020. Retrospectively Registered.

Keywords: Cognitive aging, Subjective cognitive complaint, Dementia, Alzheimer, Functional decline, Geroscience

Background

Population ageing, driven by rising life expectancies and declining fertility rates, is one of the most important transformations the world is undergoing today. World population over 60 years old is now 12% and is expected to reach 21.5% by the year 2050. Within the same period, the increase in the population over 80 years old will be even more pronounced, going from 1.7 to 4.5% of the population [1]. This demographic change is advancing faster in Latin America (LA) than in European and North American countries [2, 3]: by 2025, the total number of individuals over 60 years old will reach approximately 57 million [4]. Among the countries in this region, Chile shows one of the fastest life expectancy growth rates [2, 3, 5]. By 2050, Chileans older than 60 years will increase from the current 15.7% of the population to 32.9%, while people older than 80 years will reach 10.3% [5].

This population ageing is associated with a strong increase in the number of people living with dementia, which is estimated to reach 140 million by 2050. Dementia is the most significant global challenge for health and social care in the twenty-first century [6]. In Chile, dementia is the leading cause of dependency (36%) in older people [7–9]. The National Survey of Dependency in the Elderly reported an estimated prevalence of dementia of 7.0% (women 7.7%, men 5.9%) in people aged 60 years and older [7]. This prevalence is equivalent to what is reported in a systematic review of epidemiologic studies of dementia in Latin America [10]. In addition, the number of deaths attributed to dementia in Chile has increased by 526% from 1990 to 2010, which means that dementia is the most rapidly growing cause of death in the last 20 years [11].

Most of the dementia syndromes are preceded by a prodromal phase characterized by the presence of a broad range of very subtle manifestations of cognitive

decline. Common presentations are, amongst others, concerns about cognitive decline, also known as subjective cognitive complaint (SCC), of people who may or may not have deficits in objective testing [12], reported either by the person her/his-self, or by an informant, mild cognitive impairment (MCI), and the recently proposed mild behavioral impairment [13]. Although many subjects with SCC and MCI are at high risk to progress to a dementia syndrome (i.e. conversion rates to dementia range from 2 to 15% per year in subjects with MCI), some of them remain stable over time while others revert to healthy cognition, particularly in epidemiological settings [14–16]. This uncertain prognosis makes cognitive complaints and MCI important construct in terms of targeting interventions for secondary prevention in dementia [14, 17].

On the other hand, studies focused on the risk factors associated with functional decline (FD), i.e. the ability to perform daily routines, are less known. The determination of FD has been commonly used as a critical line dividing between predementia and dementia stages. However, the notion that FD starts only at the stage of dementia has been challenged with several studies showing that minor impairment in complex activities of daily life (ADL) precedes dementia in many years [18, 19], and is already present at the stage of MCI [20, 21]. Moreover, standardizing the degree of functional impairment that is associated with dementia rather than MCI has been problematic and the categorical classification of MCI and Alzheimer's Disease (AD) has been criticized [22]. Studying the amount and trajectories of FD could allow overcoming limitations associated with categorical outcomes, such as the conversion to dementia. Moreover, impairment in the ability to perform everyday activities and the eventual loss of independence are major concerns for older adults [23].

Finally, predicting the risk of FD and the risk of dementia is associated with a complex interplay of non-

modifiable and modifiable risk factors such as overall health and lifestyle factors [24]. The interplay of these factors could be divided into five dimensions: i) biologic, ii) neuroimaging, iii) clinical phenotype (cognition, behavioral, motor and functional domains), iii) metabolic, systemic diseases and habits and v) psychosocial. A multidimensional assessment including all dimensions mentioned above would increase either the differentiation of healthy and pathologic brain aging and the prediction of the risk of FD and dementia [25].

To the best of our knowledge, no previous study has reported multidimensional risk factors (biomedical, imaging, psychosocial, and clinical) associated with the prognosis of elderly with SCC on the evolution of FD. Also, there is a scarcity of cohort study on cognitive decline in Latin-American and no studies have been carried out in Chilean on risks associated with progression to dementia. The present paper reports the aims and design of a cohort study, being conducted in Chile by the Geroscience Center for Brain Health and Metabolism (GERO).

Objectives of the study

The general objective of this study is to analyze the rate of functional decline and progression to clinical dementia and their associated risk factors (biomedical, imaging, psychosocial, and clinical) in a community-dwelling elderly with SCC, through a population-based study. The specific objectives are to determine: i) longitudinal evolution of biomarkers measured from blood, stool and structural and functional magnetic resonance neuroimaging (MRI), ii) evolution of health-related outcomes, including quality of life, comorbidity and risk factors, and iii) mortality rates. We also aim to build the capacity to undertake clinical research on brain ageing and dementia disorders and to create data and biobanks with the appropriate infrastructure to conduct other studies and facilitate to the national and international scientific community access to the data and samples for research.

The GERO cohort is the core clinical project of the GERO program grant, which is supported by the Fund for Research Centers in Priority Areas Program (FONDAP) of the Chilean national research and development agency (ANID, for its acronym in Spanish). GERO is initially funded for 5 years, and its main aim is to establish a center for studying brain aging in Chile, including basic and clinical research.

Methods/design

Setting

The cohort recruits the potential participants from the general population, using a door-to-door strategy. The sample framework corresponds to the territories assigned to three primary healthcare centers selected by

convenience according to their socioeconomic heterogeneity, which belong to three different districts in Santiago (Chile): Macul, Peñalolen and La Reina. The sample considers a two-stage selection process. The first stage includes a sample of quadrants within each territory, where the contact to all houses is attempted. The second stage proceeded when in a home is found more than one potential eligible participant, choosing one randomly. Territories encompassed a population between 14,937 and 39,458 people [26], of which between 4.6 and 8.0% is expected to be older than 70 years old. Follow up of the participants is performed in the Memory and Neuropsychiatry Clinic (CMYN, for its acronym in Spanish) at the Universidad de Chile, located next to the Hospital Salvador, hospital of reference for territories included in the sample.

Participant, eligibility, inclusion, and exclusion

Subjects are eligible for the study if they fulfil the following criteria: i) 70 years old or older; ii) presence of a knowledgeable informant and/or presence of a contact that allows the follow up of the participant, and iii) being affiliated to the public health insurance.

Eligible participants are invited to the study and receive a first evaluation to confirm the following criteria:

Inclusion criteria: Eligibility criteria plus:

- Subjective cognitive complaint either self-reported or reported by a knowledgeable informant.
- Clinical Dementia Scale— frontotemporal lobar degeneration (CDR-FTLD) equal or inferior to 0.5 [27].
- Signed informed consent.

Exclusion criteria:

- Report of medical diagnosis of dementia.
- Mini-mental State Examination (MMSE) < 21 and Pfeffer questionnaire > 2 [28, 29].
- Institutionalization (for example, living in an elderly home or a skilled nursing facility).
- Illiteracy, meaning that is not able to write or read.
- Visual and auditory acuity not adequate for neuropsychological testing.
- Important limitation of mobility incompatible with the availability to be independent in daily life activities and/or attending a clinical center for further evaluation.
- Report of medical diagnosis of Parkinson's disease.
- Report of medical diagnosis of one or more of the following conditions causing severe impairment in functionality: any psychiatric or neurological disorders, brain tumor, subdural hematoma,

progressive supranuclear palsy, or history of head trauma.

- Report of medical diagnosis of stroke occurred in the last 3 months.
- Presence of a fatal disease (less than 1 year of survival).

Field work during the first contact

The recruitment process considers two steps. First, a lay team contacts each home to determine the presence of eligible individuals. In positive cases, the person receives a second visit by a trained psychologist who proceeds to check for eligibility. In case of acceptance, the inclusion and exclusion criteria protocol are applied. If the subject fulfils the criteria, the psychologist schedules a medical interview. Following this evaluation, a neurologist decides if the subject fulfil the inclusion criteria of the cohort (see Fig. 1).

The fieldwork is preceded by an outreach campaign (flyers, local radio advertisements, and presentations to community-organized groups) raising awareness about the visit of interviewers and the relevance of participating in the study. Rates of contact and response are monitored permanently, and the procedures around the contact and first interview are checked in the field and also by telephone to a subsample of the participants. Contact to homes is attempted up to three times on different days and hours before considering it frustrated. The fieldwork started in November 2017 and is expected to finish at the middle of 2020. Up to date, the recruitment has not been completed.

The lay team and psychologists involved in the first contact and recruitment received specific training on their labor in the field. The lay team completed a whole training week, which included theoretical and practical elements. Psychologists received a 12 weeks length training, which covers several sessions of neuropsychological assessment.

Sample size

The sample size needs to satisfy two criteria, one concerned with the statistical power required to explore multiple associations with outcomes, and other related to the feasibility to perform a wide range of assessments to each participant assuming costs and logistics. Both criteria meant a trade-off between the tolerance to uncertainty around the parameters to be estimated and the number of assessments that would be investigated throughout the study. The final sample chosen was 300 participants. This number allows maintaining the integrity of the original protocol and permits to test associations equivalent to an Odds Ratio (OR) around 1.5 (Cohen's equal to 0,22) in cases of exposition and probability of the outcome close to 50%, using a significance

of 5%. It is expected to follow each participant 3 years, accumulating roughly 900 person-years of follow up.

Follow-up and retention strategy

Socio-demographic, health-related outcomes (quality of life, arthrometric measures and risk factors), clinical stages and symptoms, psychosocial, neuropsychological, neuropsychiatric, motor, neuroimaging, blood biomarkers, stool, and genetic samples will be performed as baseline evaluation and every 18 months, with the exception of the genetic study that will be performed only at baseline and neuroimaging at baseline and 36 months. Patients' health status, functionality, and involvement in the GERO cohort will be monitored every 6 months by a telephonic questionnaire in order to assess general well-being and keep contact with the participants.

To avoid a significant attrition of the sample the following strategies have been considered: to recruit only people who have at least one person that can facilitate the contact with him or her, it means a person who can be contacted for asking about the location of the participant; telephone contact every 6 months; and domicile visit in case of absence of contact or attending to assessment appointments. Additionally, all transport costs of participants are being covered by the GERO cohort administration, as well as any food that is required during the days of assessment. Initially, the end of the follow up of the cohort is programmed for October 2022.

Assessments and measurements

The protocol considers an intensive and deep multidimensional study of factors related to the prognosis of FD and dementia development. The range of assessments includes: socio-demographic, health-related outcomes (quality of life, arthrometric measures and risk factors), clinical stages and symptoms, psychosocial, neuropsychological, neuropsychiatric, motor, neuroimaging, blood biomarkers, genetic and stool samples to perform gut microbiome studies (see Table 1, Fig. 1 and Additional file 1). Neuroimaging protocol will allow assessing brain atrophy, structural and functional connectivity and white matter lesions [83, 84] (see Additional file 1). GERO biological samples of whole blood, buffy coat, plasma, serum, and peripheral mononuclear cells are taken and processed according to the guidelines published in 2015 [85]. Samples are stored in our GERO biobank for long-term storage at -80°C or in liquid nitrogen (see details in annex). Stool samples are being collected using standardized kits and DNA extracted using the protocol Q suggested by the international human microbiome standards (IHMS SOP 06 V1). Data are recorded in an ad-hoc platform developed by bioinformatics and bioengineers personal of GERO (see

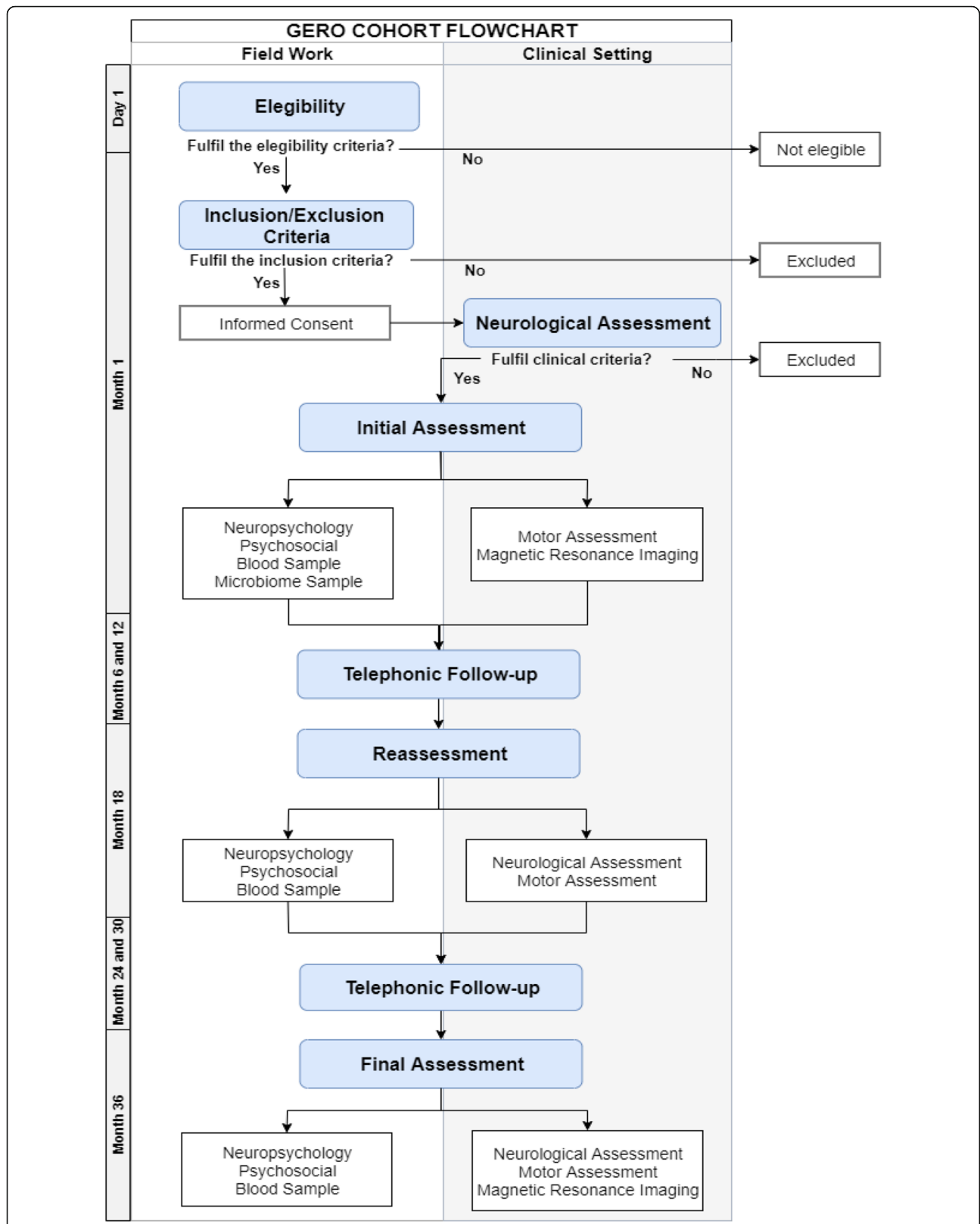


Fig. 1 Flow Chart of Study Procedure

Table 1 Schedule of enrolment, assessments and close-out

TIMEPOINT		Enrolment	Assessment			Close-out
		-t ₁	t ₁	t ₂	t ₃	
ENROLMENT:						
<i>Eligibility screen</i>		X				
<i>Informed consent</i>		X				
ASSESSMENTS:						
Functionality	Technological - Activities of Daily Living Questionnaire (T-ADLQ) [30].	X		X	X	
	Everyday Cognition Scale (ECog) [31].	X		X	X	
	Pfeffer Functional Activities Questionnaire (PQAF) [29].	X		X	X	
Socio-demographic^a [67]	Marital status.		X	X	X	
	Education.		X			
	Occupational background.		X			
	Ethnicity.		X			
	Individual and household income.		X	X	X	
	Assets inventory.		X	X	X	
	Health insurance.		X	X	X	
	Household conformation.		X	X	X	
	Social network information.		X	X	X	
Health, risk factors, anthropometric and laboratory assessment^b	Health related quality of life (EQ-5D) [32].		X	X	X	
	Tabacum and alcohol consumption (Alcohol Use Disorders Identification Test, AUDIT) [33].		X	X	X	
	Audition and vision section of the Chilean National Health Survey [34].		X	X	X	
	Physical activity, sedentarism and diet [34].		X	X	X	
	Oral health thought the Oral Health Impact Profile (OHIP).		X	X	X	
	Frailty: Fried Frailty Phenotype and the Frail Questionnaires [35, 36].		X	X	X	
	Anthropometric measurements: weight, body mass index (BMI), systolic and diastolic blood pressure (seat and standing).		X	X	X	
	Framingham Cardiovascular Risk Scale.		X	X	X	
	Laboratory evaluation: hemogram, glycaemia, lipid profile, level of vitamin B12 and folic acid, thyroid hormone (TSH and free T4) and hepatic profile.		X	X	X	
	Health inventory on 18 health conditions (including cardiovascular events).		X	X	X	
Psychological assessment^c	Engagement in stimulating activities.		X	X	X	
	Ageing related losses.		X	X	X	
	Personality traits [37, 38].		X	X	X	
	Psychological well-being [39].		X	X	X	
	Geriatric Depression Scale - Brink and Yesavage [40].		X	X	X	
	Depression, Anxiety and Stress Scale (DASS-21) [41].		X	X	X	
	Coping processes [42].		X	X	X	
	Social integration.		X	X	X	
	Cognitive reserve scale [43].		X	X	X	
Stage and clinical symptoms^d	Clinical Dementia Rating for Frontotemporal Lobar Degeneration (CDR-FTLD)-eight domains [44].	X		X	X	
	Alzheimer Disease- 8 (AD8) [45, 46].	X		X	X	
Neuropsychological evaluation	Global Cognitive Function:					
	- Minimental-State Examination (MMSE) [47].	X		X	X	
	- Montreal Cognitive Examination (MoCA) [48].	X		X	X	
	- Addenbrooke's Cognitive Examination (ACE III) [49].		X	X	X	

The association between variables and outcomes will be explored broadly using different machine learning methods, such as elastic net procedure, random forest procedure, based-tree methods, and support vector machines [88]. These procedures are suitable for leading with multi-collinearity and also high dimensional data (e.g. the number of predictive variables is larger than the number of participants in the cohort). Interpretation of causality will be conducted using standard random effect models and eventually structural equation modelling [89].

Missing data and loss of follow up of participants are common in observational studies, mainly in cohorts. Firstly, cases with missing data in any outcome will be explored and compared with cases without missing data describing any pattern. Secondly, two strategies will be followed to estimate results: i) to analyze only cases with complete information (i.e. assuming that missing data is completely at random); and ii) imputing data according to multivariate imputation by chained equation techniques [90, 91]. The analysis will be performed using the statistical software R.

Coordination with local health services

The GERO cohort has been carefully designed to avoid undermining the usual care of participants in their common health services facilities. Even more, a linkage between the health assessments provided by the cohort and the usual health care has been promoted.

In cases when the cohort's assessment detects a new health condition (diabetes, depression, hypertension, etc.) the participants are derived to the primary healthcare center of their territory. In the case of detection of a significant neurological disorder (Dementia syndrome, Parkinson, etc.) the participants are directly derived to specialized care according to their Health District, communicating the decision to the primary health care.

Primary care health centers, specialized care polyclinics and the direction of the Health District involved have been informed about the study and jointly the protocol of derivation and communication were established.

Regulation of access to data/biospecimens

The access to data and biospecimens is regulated by the GERO directorate in accordance with the local Institutional Review Board authorization. A bilateral agreement must be signed before sharing of data. Access to the server will not be granted.

Ethics

The project was approved September 2016 by the Ethic Committee of the Servicio de Salud Metropolitano Oriente, Santiago (Chile). A written informed consent to participate in the study is obtained for all participants of the GERO cohort.

Outreach/dissemination and clinical impact of the GERO cohort

Our group, in collaboration with the Ministry of Health, the Hospital del Salvador and other faculties of the University of Chile, created in 2018 the CMYN, a clinical facility that houses one of the three Memory Units of the Chilean's Dementia Plan, and it is conformed by a multi-disciplinary team (neurologist, psychiatrist, nurse, neuropsychologist, clinical psychologist, occupational therapist, speech therapist and social worker). Nowadays, GERO and CMYN train professionals in primary care centers and neurology, psychiatric and geriatric residents in brain ageing and dementia. Additionally, we perform outreach activities on geroscience, brain ageing, and dementia to the broad community, mainly in the three districts of the GERO cohort and in Hospital Salvador, and to the scientific and health community. We designed a brochure to inform about the GERO cohort and performed broader dissemination through media (print, television, radio). Finally, our group lead a policy paper on dementia to inform public policy [92].

Discussion

The current paper presents the study protocol of a Chilean cohort in brain aging and dementia: the GERO cohort study. This project mainly focuses in identifying risk factors associated with functional decline and progression to clinical dementia in the elderly with SCC by determine factors related to biomedical, clinical and psychosocial variables.

To date, important contributions have been realized in the Latin-America region allowing to know the prevalence and incidence of dementia [7, 10, 93], the subjective memory complaints in people with and without dementia [94], the neuropsychiatric symptoms as a risk of dementia [95], the unawareness of memory impairment in dementia [96], and biomarkers profiles in AD and MCI [97] in non-Caucasian population. However, study on the risk to conversion to dementia in elderly subjective cognitive complaint and MCI had been performed mainly in North America and Europe [98–107]. Epidemiologic studies of pathologic brain aging, SCC and MCI from Latin America and in particular Chile are still scarce in comparison with those from northern countries [9] and none of them have addressed risk factors related to FD, and its relationship with the progression to dementia. The transference of data collected from longitudinal and transversal European and North American studies to Latin-America population is limited due to the important differences in genetic, medical and social factors associated with FD and the risk of Dementia. In this context, the study of risk factors associated with dementia in non-Caucasian population has emerged as priority area in research [108]. GERO cohort address an under represented population in the literature [9].

From a public health perspective, identification of SCC and MCI subjects with higher risk of pathologic trajectories would be valuable as a diagnostic tool to focus prevention in subjects at higher risk of FD and dementia. Additionally, between SCC and MCI, SCC could be a better valuable target for public policy interventions, since it is built on the subjective self or informant-reported perceptions, which are closer to the awareness that could target health care consultation. Moreover, the diagnosis of MCI required the demonstration of an objective decline in cognitive performance limiting the diagnosis of MCI in primary care centers. Also, the concept of MCI has been criticized due to overlap of MCI and AD dementia suggesting ambiguity in the MCI concept and the criteria of MCI are continuing evolving [22].

The collective approach will allow us to i) improve diagnosis for neurodegenerative disease, ii) evaluate age-related risk factors and genetic variations linked to neurodegeneration, iii) understand how molecular mechanisms involved in aging lead to neurodegeneration and iv) explore novel biomarkers to evaluate the onset and progression of neurodegeneration. GERO's aim is to establish a center for studying brain aging in Chile, including basic, translational and clinical research.

The availability of a GERO biobank will allow fostering translational studies by collecting peripheral samples for research use to improve our understanding of health and disease in the Chilean population. Additionally, biological analysis and associated clinical data are necessary to contribute in early diagnosis, prognostic and treatment for the aging population [14]. The development of and ad-hoc platform constitute an important step to the development of a brain aging registry in Chile who could contribute to advance in research in brain aging by collecting either epidemiologic data and data from other sources, such as from clinical practice with patients with brain disorders [109]. GERO translational approach combines basic and clinical scientists who are targeted to fill the void in aging research that exists in our country, specifically toward the interface between aging and neurodegenerative diseases.

Furthermore, GERO platform will provide strategies, methods and tools to conduct longitudinal studies on a community base in populations with diverse epidemiological settings.

Main strengths and weakness of the GERO cohort

The main strengths of the GERO cohort is recruitment of participants at their home, allowing recruiting either people attending clinical center and people not attending. People not attending clinical center probably represent a higher risk group under-represented in previous studies [110]. Moreover, feasibility of memory clinical-based study in Latin America is limited, due to the

important barriers to the diagnosis of dementia in Latino-America and generally consultation for memory problems occur in late stage of dementia disorder [9]; second, GERO cohort implemented a multidimensional-based evaluation, categorized in five main levels: i) biomarkers, ii) neuroimaging, iii) clinical phenotype (cognition, neuropsychiatric, motor and functionality), iv) metabolic, systemic diseases, and habits and v) psychosocial. This multidimensional approach is in line with evidence explaining FD of older adults with cognitive impairment by multiple factors [111]. Dementia also is umbrella term that include several diseases with important variability of genetic, neural, and behavioral manifestations [112], therefore a multilevel approach including molecular biomarkers, neuroimaging, genetic and clinical phenotypic allow a better characterization [25]. Third, we will explore predictive algorithms that will eventually predict rates of FD and conversion to dementia [113–115]. The development of bioinformatics and modelling algorithms during data analysis will allow the integration of complex data from multiple sources to build a comprehensive interaction model in our local aging population, which expect to uncover complex determinants of aging and brain diseases. Finally, establishing comprehensive databases for studies on aging can create the opportunity to formulate and validate tools for early detection of people who are at increased risk of late-life cognitive impairment, to identify important targets (risk factors) for preventive interventions, and to test such interventions in randomized control trials.

Potential limitations

One of the main limitations of our study is a relatively small sample size. Due to our research strategy to prioritize a multidimensional and extensive evaluation, time and budget constraint, we limited the cohort size. Nevertheless, we selected a continuous outcome and will study the rate of change rather than a categorical outcome that allow to overcome possible limitations due to the sample size [22, 116]. Also due to budget constraint, we do not include determination of specific biomarkers for Alzheimer's disease in spinal fluid and with PET (Pet amyloid and tau) [117], nevertheless we store blood sample that will allow to study blood-based biomarkers when available. Finally, as explained above, we have implemented a strategy to avoid limitation associated with attrition and missing data.

Final message

Our work will allow us to determine multidimensional risks factors associated with the prognosis of elderly with cognitive complaint on functional decline in Chilean population. The GERO cohort will help to design public health policies tailored to prevent aging disease, and

contribute to a better understanding of cognitive impairment and dementia in Latin America and the world. GERO's aim is to establish a center for studying Brain Ageing in Chile including basic and clinical research.

Supplementary Information

The online version contains supplementary material available at <https://doi.org/10.1186/s12877-020-01866-4>.

Additional file 1.

Abbreviations

AD: Alzheimer's disease; ADL: Activities of daily life; ANID: National Research and Development Agency (ANID, for its acronym in Spanish); CDR-FTLD: Clinical dementia scale - frontotemporal lobar degeneration; CMYN: Memory and Neuropsychiatry Clinic (CMYN, for its acronym in Spanish); DSM-V: Diagnostic and statistical manual for mental disorders fifth edition; FONDAF: Fund for research centers in priority areas program; GERO: Geroscience Center for Brain Health and Metabolism; FDF: Functional decline; LA: Latin America; MCI: Mild cognitive impairment; MMSE: Mini-mental State Examination; MRI: Magnetic resonance neuroimaging; OR: Odds ratio; SCC: Subjective cognitive complaint

Acknowledgements

Servicio de Salud Metropolitano Oriente, Hospital del Salvador and CESFAM Santa Julia (Macul), CESFAM Ossandón (La Reina), CESFAM Juan Pablo II (La Reina), and CESFAM Cardenal Silvia Henríquez (Peñalolén) for their contribution to the realization of the cohort.

Authors' contributions

Designed the study: AS, PZ, FC, PL, RV, RA, AI, CG, HA, DT. Field work and coordination of study: AS, DMP, GFM, PL, RV, CDA, TP, PO, CT, DT. Draft Manuscript: AS, PZ, DMP, GFM, PO, DT. Wrote and revised the manuscript critically: AS, PZ, DMP, GFM, FC, CDA, TP, AI, CG, DT. All authors read and approved the final manuscript.

Funding

ANID/FONDAP/15150012; AS and AI are partially supported by the Interamerican Development Bank (IDB) and the Multi-partner consortium to expand dementia research in Latin America (ReDLat) which is supported by grants from the National Institutes of Health (R01AG057234), Alzheimer's Association (SG-20-725707), Rainwater Charitable Foundation, and The Global Brain Health Institute. AI is partially supported by grants from CONICET, ANID/FONDECYT Regular 602/1171200, FONCYT-PICT 2017-1818, FONCYT-PICT 2017-1820, ANID/FONDAP 15150012, Alzheimer's Association GBHI ALZ UK-20-639295, and NIH NIA R01 AG057234.

The contents of this publication are solely the responsibility of the authors and does not represent the official views of these institutions. The funding body has not involvement in the design of the study and collection, analysis, and interpretation of data and in manuscript writing.

Availability of data and materials

Not applicable.

Ethics approval and consent to participate

The study protocol was approved by the Ethic Committee of the Servicio de Salud Metropolitano Oriente, Santiago (Chile) on September 2016. A written informed consent to participate in the study is obtained for all participants of the GERO cohort.

Consent for publication

Not applicable.

Competing interests

The authors declare that they have no competing interests. The "Geroscience Center for Brain Health and Metabolism" is funded by the National Agency of Research and Technology ("Agencia Nacional de Investigación y Tecnología, ANIT"), entity under the Chilean Ministry of Science and

Technology, through the Priority Areas Research Center Founding ("Fondo de Financiamiento de Centros de Investigación en Áreas Prioritarias, FONDAF") N° 1510012. The project was founded in 2015 with US\$5.284.791 (equivalent to national currency), for a period of 5 years (2015–2020). (<https://www.gerochile.cl/web/>).

Author details

¹Geroscience Center for Brain Health and Metabolism (GERO), Santiago, Chile. ²Neuropsychology and Clinical Neuroscience Laboratory (LANNEC), Physiopathology Department - Institute of Biomedical Sciences (ICBM), Neuroscience and East Neuroscience Departments, Faculty of Medicine, University of Chile, Santiago, Chile. ³Memory and Neuropsychiatric Clinic (CMYN) Neurology Department, Hospital del Salvador and Faculty of Medicine, University of Chile, Santiago, Chile. ⁴Department of Neurology and Psychiatry, Clínica Alemana-Universidad del Desarrollo, Santiago, Chile. ⁵Department of Neurosciences, Faculty of Medicine, Universidad de Chile, Santiago, Chile. ⁶Health Service & Population Research Department, IoPPN, King's College London, London, UK. ⁷Escuela de Salud Pública, Universidad de Chile, Santiago, Chile. ⁸Center for Social and Cognitive Neuroscience (CSCN), School of Psychology, Universidad Adolfo Ibáñez, Santiago, Chile. ⁹Center for Integrative Biology, Faculty of Sciences, Universidad Mayor, Santiago, Chile. ¹⁰The Buck Institute for Research on Aging, Novato, USA. ¹¹South Neurology Department, Faculty of Medicine, University of Chile, Santiago, Chile. ¹²Unidad de Neurología, Hospital San José, Santiago, Chile. ¹³East Neurology Department, Faculty of Medicine, University of Chile, Santiago, Chile. ¹⁴Facultad de Psicología, Universidad Alberto Hurtado, Santiago, Chile. ¹⁵Institute of Biomedical Sciences (ICBM), Faculty of Medicine, University of Chile, Santiago, Chile. ¹⁶Neuroradiologic Department, Instituto de Neurocirugía Asenjo, SSMO, Santiago, Chile. ¹⁷Cognitive Neuroscience Center (CNC), Universidad de San Andrés, Buenos Aires, Argentina. ¹⁸National Scientific and Technical Research Council (CONICET), Buenos Aires, Argentina. ¹⁹Universidad Autónoma del Caribe, Barranquilla, Colombia. ²⁰Global Brain Health Institute (GBHI), University of California San Francisco (UCSF), California, USA. ²¹Psychology Department, School of Psychological Sciences & Health, University of Strathclyde, Glasgow, UK. ²²Department of Biology, Faculty of Sciences, Universidad de Chile, Santiago, Chile. ²³INSERM, Bordeaux Population Health Research Center, UMR 1219, Univ. Bordeaux, F-33000 Bordeaux, France. ²⁴Escuela de Psicología, Facultad de Ciencias Sociales, University of Chile, Santiago, Chile.

Received: 19 May 2020 Accepted: 3 November 2020

Published online: 25 November 2020

References

- United Nations. World population prospects: the 2015 revision, key findings and advance tables. Working paper no. ESA/P/WP.241. World population prospects. New York: United Nations; 2015.
- Bongaarts J. Trends in senescent life expectancy. *Popul Stud (Camb)*. 2009; 63(3):203–13.
- Bongaarts J. Human population growth and the demographic transition. *Philos Trans R Soc Lond Ser B Biol Sci*. 2009;364(1532):2985–90.
- Comisión Económica para América Latina y el Caribe [CEPAL] - Economic Commission for Latin America and the Caribbean. *Panorama Social de América Latina (LC/G. 2635-P)*. Santiago; 2014.
- Thumala D, Kennedy B, Calvo E, Gonzalez-Billault C, Zitko P, Lillo P, Villagra R, Ibáñez A, Assar R, Andrade M, et al. Aging and health policies in Chile: new agendas for research. *Health Syst Reform*. 2017;3(4):253–60.
- Livingston G, Sommerlad A, Orgeta V, Costafreda SG, Huntley J, Ames D, Ballard C, Banerjee S, Burns A, Cohen-Mansfield J, et al. Dementia prevention, intervention, and care. *Lancet*. 2017;390(10113):2673–734.
- Custodio N, Wheelock A, Thumala D, Slachevsky A. Dementia in Latin America: epidemiological evidence and implications for public policy. *Front Aging Neurosci*. 2017;9:221.
- Fuentes P, Albala C. Aging and dementia in Chile. *Dement Neuropsychol*. 2014;8(4):317–22.
- Parra MA, Baez S, Allegri R, Nitrini R, Lopera F, Slachevsky A, Custodio N, Lira D, Piguet O, Kumfor F, et al. Dementia in Latin America: assessing the present and envisioning the future. *Neurology*. 2018;90(5):222–31.
- Prince M, Bryce R, Albanese E, Wimo A, Ribeiro W, Ferri CP. The global prevalence of dementia: a systematic review and metaanalysis. *Alzheimers Dement*. 2013;9(1):63–75 e62.

11. Lozano R, Naghavi M, Foreman K, Lim S, Shibuya K, Aboyans V, Abraham J, Adair T, Aggarwal R, Ahn SY, et al. Global and regional mortality from 235 causes of death for 20 age groups in 1990 and 2010: a systematic analysis for the global burden of disease study 2010. *Lancet*. 2012;380(9859):2095–128.
12. Mendonca MD, Alves L, Bugalho P. From subjective cognitive complaints to dementia: who is at risk?: a systematic review. *Am J Alzheimers Dis Other Dement*. 2016;31(2):105–14.
13. Ismail Z, Agüera-Ortiz L, Brodaty H, Cieslak A, Cummings J, Fischer CE, Gauthier S, Geda YE, Herrmann N, Kanji J, et al. The mild behavioral impairment checklist (MBI-C): a rating scale for neuropsychiatric symptoms in pre-dementia populations. *J Alzheimers Dis*. 2017;56(3):929–38.
14. Cooper C, Sommerlad A, Lyketsos CG, Livingston G. Modifiable predictors of dementia in mild cognitive impairment: a systematic review and meta-analysis. *Am J Psychiatry*. 2015;172(4):323–34.
15. Kielb S, Rogalski E, Weintraub S, Rademaker A. Objective features of subjective cognitive decline in a United States national database. *Alzheimers Dement*. 2017;13(12):1337–44.
16. Rabin LA, Smart CM, Crane PK, Amariglio RE, Berman LM, Boada M, Buckley RF, Chetelat G, Dubois B, Ellis KA, et al. Subjective cognitive decline in older adults: an overview of self-report measures used across 19 international research studies. *J Alzheimers Dis*. 2015;48(Suppl 1):S63–86.
17. Stewart R. Subjective Cognitive Impairment. *Geriatric Psychiatry*. 2012;25:445–50.
18. Peres K, Helmer C, Amieva H, Orgogozo JM, Rouch I, Dartigues JF, Barberger-Gateau P. Natural history of decline in instrumental activities of daily living performance over the 10 years preceding the clinical diagnosis of dementia: a prospective population-based study. *J Am Geriatr Soc*. 2008;56(1):37–44.
19. Marshall GA, Zoller AS, Lorus N, Amariglio RE, Locascio JJ, Johnson KA, Sperling RA, Rentz DM. Functional activities questionnaire items that best discriminate and predict progression from clinically Normal to mild cognitive impairment. *Curr Alzheimer Res*. 2015;12(5):493–502.
20. Winblad B, Palmer K, Kivipelto M, Jelic V, Fratiglioni L, Wahlund LO, Nordberg A, Backman L, Albert M, Almkvist O, et al. Mild cognitive impairment—beyond controversies, towards a consensus: report of the international working group on mild cognitive impairment. *J Intern Med*. 2004;256(3):240–6.
21. Adams HH, Hibar DP, Chouraki V, Stein JL, Nyquist PA, Renteria ME, Trompet S, Arias-Vasquez A, Seshadri S, Desrivieres S, et al. Novel genetic loci underlying human intracranial volume identified through genome-wide association. *Nat Neurosci*. 2016;19(12):1569–82.
22. Morris JC. Revised criteria for mild cognitive impairment may compromise the diagnosis of Alzheimer disease dementia. *Arch Neurol*. 2012;69(6):700–8.
23. Rog LA, Park LQ, Harvey DJ, Huang CJ, Mackin S, Farias ST. The independent contributions of cognitive impairment and neuropsychiatric symptoms to everyday function in older adults. *Clin Neuropsychol*. 2014;28(2):215–36.
24. Livingston G, Baio G, Sommerlad A, de Lusignan S, Poulimenos S, Morris S, Rait G, Hoe J. Effectiveness of an intervention to facilitate prompt referral to memory clinics in the United Kingdom: cluster randomised controlled trial. *PLoS Med*. 2017;14(3):e1002252.
25. Gross AL, Mungas DM, Leoutsakos JS, Albert MS, Jones RN. Alzheimer's disease severity, objectively determined and measured. *Alzheimers Dement (Amst)*. 2016;4:159–68.
26. Departamento de Estadísticas y Gestión de la Información SdSMOS: Población. Chile: Ministerio de Salud; 2014.
27. Knopman DS, Kramer JH, Boeve BF, Caselli RJ, Graff-Radford NR, Mendez MF, Miller BL, Mercurio N. Development of methodology for conducting clinical trials in frontotemporal lobar degeneration. *Brain*. 2008;131(Pt 11):2957–68.
28. Folstein M, Anthony JC, Parhad I, Duffy B, Gruenberg EM. The meaning of cognitive impairment in the elderly. *J Am Geriatr Soc*. 1985;33:228–35.
29. Pfeffer RI, Kurosaki TT, Harrah CH Jr, Chance JM, Filos S. Measurement of functional activities in older adults in the community. *J Gerontol*. 1982;37(3):323–9.
30. Muñoz-Neira C, Lopez O, Riveros R, Nuñez-Huasaf J, Flores P, Slachevsky A. The technology-activities of daily living questionnaire: a version with a technology-related subscale. *Dement Geriatr Cogn Disord*. 2012;33:361–71.
31. Farias ST, Mungas D, Reed BR, Cahn-Weiner D, Jagust W, Baynes K, Decarli C. The measurement of everyday cognition (ECog): scale development and psychometric properties. *Neuropsychology*. 2008;22(4):531–44.
32. Zarate V, Kind P, Valenzuela P, Vignau A, Olivares-Tirado P, Muñoz A. Social valuation of EQ-5D health states: the Chilean case. *Value Health*. 2011;14:1135–41.
33. Donoso MP: Análisis de Resultados del Alcohol Use Disorders Identification Test (AUDIT) Resultados Escala: Noveno Estudio Nacional de Drogas en Población General de Chile. Chile: SENDA Ministerio del Interior y Seguridad Pública; 2015.
34. ENS: Encuesta Nacional de Salud 2009–2010. Santiago; 2010.
35. Fried PA, Watkinson B. Differential effects on facets of attention in adolescents prenatally exposed to cigarettes and marijuana. *Neurotoxicol Teratol*. 2001;23(5):421–30.
36. Avila-Funes JA, Helmer C, Amieva H, Barberger-Gateau P, Le Goff M, Ritchie K, Portet F, Carriere I, Tavernier B, Gutierrez-Robledo LM, et al. Frailty among community-dwelling elderly people in France: the three-city study. *J Gerontol A Biol Sci Med Sci*. 2008;63(10):1089–96.
37. Berger-Sieczkowski E, Gruber B, Stogmann E, Lehmer J. Differences regarding the five-factor personality model in patients with subjective cognitive decline and mild cognitive impairment. *Neuropsychiatr*. 2019;33(1):35–45.
38. McCrae RR, Costa PT Jr. Validation of the five-factor model of personality across instruments and observers. *J Pers Soc Psychol*. 1987;52(1):81–90.
39. Ryff CD, Keyes CL. The structure of psychological well-being revisited. *J Pers Soc Psychol*. 1995;69(4):719–27.
40. Hoyl T, EV, Marín P. Depresión en el adulto mayor: evaluación preliminar de la efectividad, como instrumento de tamizaje, de la versión de 5 ítems de la Escala de Depresión Geriátrica. *Rev Med Chil*. 2000;128:1199–204.
41. Gurrola GM, Balcazar P, Bonilla MP, Virseda JA. Estructura Factorial y Consistencia Interna de la Escala de Depresión, Ansiedad y Estrés (DASS-21) en una muestra no clínica. *Psicología y Ciencia Social*. 2006;8(2):3–7.
42. Rothermund K, Brandstädter J. Coping with deficits and losses in later life: from compensatory action to accommodation. *Psychol Aging*. 2003;18(4):896–905.
43. Leon I, García-García J, Roldan-Tapia L. Estimating cognitive reserve in healthy adults using the cognitive reserve scale. *PLoS One*. 2014;9(7):e102632.
44. Knopman DS, Weintraub S, Pankratz VS. Language and behavior domains enhance the value of the clinical dementia rating scale. *Alzheimers Dement (Amst)*. 2011;7:293–9.
45. Galvin JE, Roe CM, Coats MA, Morris JC. Patient's rating of cognitive ability: using the AD8, a brief informant interview, as a self-rating tool to detect dementia. *Arch Neurol*. 2007;64(5):725–30.
46. Galvin JE, Roe CM, Xiong C, Morris JC. Validity and reliability of the AD8 informant interview in dementia. *Neurology*. 2006;67(11):1942–8.
47. Folstein MFF, S. E. McHugh, P. R. Mini-mental state: a practical method for grading the cognitive state of patients for clinician. *J Psychiatry Res* 1975, 12(1):189–198.
48. Delgado C, Aráneda A, Behrens MI. Validation of the Spanish-language version of the Montreal cognitive assessment test in adults older than 60 years. *Neurologia*. 2017;34(6):376–85.
49. Bruno D, Slachevsky A, Fiorentino N, Rueda DS, Bruno G, Tagle AR, Olavarria L, Flores P, Lillo P, Roca M, et al. Argentinian/Chilean validation of the Spanish-language version of Addenbrooke's cognitive examination III for diagnosing dementia. *Neurologia*. 2020;35(2):82–88.
50. Parra MA, Abrahams S, Logie RH, Sala SD. Age and binding within-dimension features in visual short-term memory. *Neurosci Lett*. 2009;449(1):1–5.
51. Parra MA, Abrahams S, Logie RH, Della Sala S. Visual short-term memory binding in Alzheimer's disease and depression. *J Neurol*. 2010;257(7):1160–9.
52. Auriacombe S, Helmer C, Amieva H, Berr C, Dubois B, Dartigues JF. Validity of the free and cued selective reminding test in predicting dementia: the 3C study. *Neurology*. 2010;74(22):1760–7.
53. Delgado C, Muñoz-Neira C, Soto A, Martínez M, Henríquez F, Flores P, Slachevsky A. Comparison of the psychometric properties of the “word” and “picture” versions of the free and cued selective reminding test in a Spanish-speaking cohort of patients with mild Alzheimer's disease and cognitively healthy controls. *Arch Clin Neuropsychol*. 2016;31(2):165–75.
54. Slachevsky A, Barraza P, Hornberger M, Muñoz-Neira C, Flanagan E, Henríquez F, Bravo E, Farias M, Delgado C. Neuroanatomical comparison of the “word” and “picture” versions of the free and cued selective reminding test in Alzheimer's disease. *J Alzheimers Dis*. 2018;61(2):589–600.
55. Tu S, Wong S, Hodges JR, Irish M, Piguet O, Hornberger M. Lost in spatial translation - a novel tool to objectively assess spatial disorientation in Alzheimer's disease and frontotemporal dementia. *Cortex*. 2015;67:83–94.
56. Torralva T, Roca M, Gleichgerrcht E, Lopez P, Manes F. INECO frontal screening (IFS): a brief, sensitive, and specific tool to assess executive functions in dementia. *J Int Neuropsychol Soc*. 2009;15(5):777–86.

57. Olabarrieta-Landa L, Rivera D, Galarza-Del-Angel J, Garza MT, Saracho CP, Rodriguez W, Chavez-Oliveros M, Rabago B, Leibach G, Schebela S, et al. Verbal fluency tests: normative data for the Latin American Spanish speaking adult population. *NeuroRehabilitation*. 2015;37(4):515–61.
58. Reitan RM. The relation of the trail making test to organic brain damage. *J Consult Psychol*. 1955;19(5):393–4.
59. Arango-Lasprilla JC, Rivera D, Aguayo A, Rodriguez W, Garza MT, Saracho CP, Rodriguez-Agudelo Y, Aliaga A, Weiler G, Luna M, et al. Trail making test: normative data for the Latin American Spanish speaking adult population. *NeuroRehabilitation*. 2015;37(4):639–61.
60. Gorno-Tempini ML, Hillis AE, Weintraub S, Kertesz A, Mendez M, Cappa SF, Ogar JM, Rohrer JD, Black S, Boeve BF, et al. Classification of primary progressive aphasia and its variants. *Neurology*. 2011;76(11):1006–14.
61. Rey A. Test de copie d'une figure complexe. Paris: Centre de Psychologie Appliquée; 1959.
62. Rivera D, Perrin PB, Morlett-Paredes A, Galarza-Del-Angel J, Martinez C, Garza MT, Saracho CP, Rodriguez W, Rodriguez-Agudelo Y, Rabago B, et al. Rey-Osterrieth complex figure - copy and immediate recall: normative data for the Latin American Spanish speaking adult population. *NeuroRehabilitation*. 2015;37(4):677–98.
63. Bertoux M, Volle E, de Souza LC, Funkiewiez A, Dubois B, Habert MO. Neural correlates of the mini-SEA (social cognition and emotional assessment) in behavioral variant frontotemporal dementia. *Brain Imaging Behav*. 2014;8(1):1–6.
64. Schroder J, Niethammer R, Geider FJ, Reitz C, Binkert M, Jauss M, Sauer H. Neurological soft signs in schizophrenia. *Schizophr Res*. 1991;6(1):25–30.
65. Elamin M, Bennett G, Symonds A, Pal S, Abrahams S, Parra M, Thomas B, Connick P: Introducing a Brief Screening a Tool for Motor Signs in Patients with Dementia (P6.203). *Neurology* 2015;84(14 Supplement).
66. Tinetti ME. Performance-oriented assessment of mobility problems in elderly patients. *J Am Geriatr Soc*. 1986;34(2):119–26.
67. Powell LE, Myers AM. The activities-specific balance confidence (ABC) scale. *J Gerontol A Biol Sci Med Sci*. 1995;50A(1):M28–34.
68. Podsiadlo D, Richardson S. The timed "up & go": a test of basic functional mobility for frail elderly persons. *J Am Geriatr Soc*. 1991;39(2):142–8.
69. Costea PI, Coelho LP, Sunagawa S, Munch R, Huerta-Cepas J, Forslund K, Hildebrand F, Kushugulova A, Zeller G, Bork P. Subspecies in the global human gut microbiome. *Mol Syst Biol*. 2017;13(12):960.
70. Araujo DM, Lapchak PA. Induction of immune system mediators in the hippocampal formation in Alzheimer's and Parkinson's diseases: selective effects on specific interleukins and interleukin receptors. *Neuroscience*. 1994;61(4):745–54.
71. D'Anna L, Abu-Rumeileh S, Fabris M, Pistis C, Baldi A, Sanvilli N, Curcio F, Gigli GL, D'Anna S, Valente M. Serum Interleukin-10 levels correlate with cerebrospinal fluid amyloid Beta deposition in Alzheimer disease patients. *Neurodegener Dis*. 2017;17(4–5):227–34.
72. Kim YS, Lee KJ, Kim H. Serum tumour necrosis factor-alpha and interleukin-6 levels in Alzheimer's disease and mild cognitive impairment. *Psychogeriatrics*. 2017;17(4):224–30.
73. Tennent GA, Lovat LB, Pepys MB. Serum amyloid P component prevents proteolysis of the amyloid fibrils of Alzheimer disease and systemic amyloidosis. *Proc Natl Acad Sci U S A*. 1995;92(10):4299–303.
74. Gong C, Wei D, Wang Y, Ma J, Yuan C, Zhang W, Yu G, Zhao Y. A meta-analysis of C-reactive protein in patients with Alzheimer's disease. *Am J Alzheimers Dis Other Dement*. 2016;31(3):194–200.
75. Goldman JS, Farmer JM, Wood EM, Johnson JK, Boxer A, Neuhaus J, Lomen-Hoerth C, Wilhelmsen KC, Lee VM, Grossman M, et al. Comparison of family histories in FTL D subtypes and related tauopathies. *Neurology*. 2005;65(11):1817–9.
76. Lambert JC, Ibrahim-Verbaas CA, Harold D, Naj AC, Sims R, Bellenguez C, DeStafano AL, Bis JC, Beecham GW, Grenier-Boley B, et al. Meta-analysis of 74,046 individuals identifies 11 new susceptibility loci for Alzheimer's disease. *Nat Genet*. 2013;45(12):1452–8.
77. EuroQol G. EuroQol—a new facility for the measurement of health-related quality of life. *Health Policy*. 1990;16(3):199–208.
78. Global Burden Disease: Chile. 2010. http://www.healthdata.org/sites/default/files/files/country_profiles/GBD/ihme_gbd_country_report_chile.pdf.
79. Morley JE, Malmstrom TK, Miller DK. A simple frailty questionnaire (frail) predicts outcomes in middle aged African Americans. *J Nutr Health Aging*. 2012;16:601–8.
80. Fried LP, Tangen CM, Walston J, Newman AB, Hirsch C, Gottdiener J, Seeman T, Tracy R, Kop WJ, Burke G, et al. Frailty in older adults: evidence for a phenotype. *J Gerontol*. 2001;56A:146–56.
81. Icaza G, Nunez L, Marrugat J, Mujica V, Escobar MC, Jimenez AL, Perez P, Palomo I. Estimation of coronary heart disease risk in Chilean subjects based on adapted Framingham equations. *Rev Med Chil*. 2009;137(10):1273–82.
82. Munoz C, Nunez J, Flores P, Behrens PM, Slachevsky A. Usefulness of a brief informant interview to detect dementia, translated into Spanish (AD8-Ch). *Rev Med Chil*. 2010;138(8):1063–5.
83. Pievani M, Filippini N, van den Heuvel MP, Cappa SF, Frisoni GB. Brain connectivity in neurodegenerative diseases—from phenotype to proteinopathy. *Nat Rev Neurol*. 2014;10(11):620–33.
84. Ferrarini L, van Lew B, Reiber JH, Gandin C, Galluzzo L, Scafato E, Frisoni GB, Milles J, Pievani M, Group IW. Hippocampal atrophy in people with memory deficits: results from the population-based IPREA study. *Int Psychogeriatr*. 2014;26(7):1067–81.
85. O'Bryant SE, Gupta V, Henriksen K, Edwards M, Jeromin A, Lista S, Bazenet C, Soares H, Lovestone S, Hampel H, et al. Guidelines for the standardization of preanalytic variables for blood-based biomarker studies in Alzheimer's disease research. *Alzheimers Dement*. 2015;11:549–60.
86. Browne WJ. MCMC estimation in MLwiN (version 2.13) Centre for Multilevel Modelling. Bristol: Centre for Multilevel Modelling, University of Bristol; 2015.
87. Christensen R, Johnson W, Branscum A, Hanson TE. Bayesian ideas and data analysis: an introduction for scientists and statisticians. USA: CRC Press; 2010.
88. James G, Witten D, Hastie T, Tibshirani R. An introduction to statistical learning with applications in R. New York: Springer; 2017.
89. Hoyle RH. Handbook of structural equation modeling. New York: The Guilford Press; 2012.
90. Steyerberg E. Clinical Prediction Model: Ch. 8: Case Study on Dealing with Missing Data. *Stat Biol Health*. 2009:139–58.
91. Steyerberg E. Clinical Prediction Models: Ch. 7: A Practical Approach to Development, Validation, and Updating. *Stat Biol Health*. 2009:115–37.
92. Slachevsky A, Leon T, Gajardo J, Rivero P. Policy Paper "Prevención y abordaje integral de las demencias. Avances y desafíos para la Política Pública en materia de trastornos neurocognitivos". Santiago: Universidad de Chile; Comisión Futuro del Senado; COPRAD; GERO; 2019.
93. Rodriguez JLL, Ferri CP, Acosta D, Guerra M, Huang Y, Jacob KS, Krishnamoorthy ES, Salas A, Sosa AL, Acosta I, et al. Prevalence of dementia in Latin America, India, and China: a population-based cross-sectional survey. *Lancet*. 2008;372:464–74.
94. Group DR. Subjective memory deficits in people with and without dementia: findings from the 10/66 dementia research group pilot studies in low- and middle-income countries. *J Am Geriatr Soc*. 2009;57:2118–24.
95. Acosta I, Borges G, Aguirre-Hernandez R, Sosa AL, Prince M. Neuropsychiatric symptoms as risk factors of dementia in a Mexican population: a 10/66 dementia research group study. *Alzheimers Dement*. 2018;14:271–9.
96. Mograbi DC, Brown RG, Salas C, Morris RG. Emotional reactivity and awareness of task performance in Alzheimer's disease. *Neuropsychologia*. 2012;50:2075–84.
97. Villarreal AE, O'Bryant SE, Edwards M, Grajales S, Britton GB. Serum-based protein profiles of Alzheimer's disease and mild cognitive impairment in elderly Hispanics. *Neurodegener Dis Manag*. 2016;6:203–13.
98. Jagger C, Andersen K, Breteler MM, Copeland JR, Helmer C, Baldereschi M, Fratiglioni L, Lobo A, Soininen H, Hofman A, et al. Prognosis with dementia in Europe: a collaborative study of population-based cohorts. Neurologic diseases in the elderly research group. *Neurology*. 2000; 54(11 Suppl 5):S16–20.
99. Purser JL, Fillenbaum GG, Pieper CF, Wallace RB. Mild cognitive impairment and 10-year trajectories of disability in the Iowa established populations for epidemiologic studies of the elderly cohort. *J Am Geriatr Soc*. 2005;53(11):1966–72.
100. Muller M, Tang MX, Schupf N, Manly JJ, Mayeux R, Luchsinger JA. Metabolic syndrome and dementia risk in a multiethnic elderly cohort. *Dement Geriatr Cogn Disord*. 2007;24(3):185–92.
101. Melis RJ, Marengoni A, Rizzuto D, Teerenstra S, Kivipelto M, Angleman SB, Fratiglioni L. The influence of multimorbidity on clinical progression of dementia in a population-based cohort. *Plos One*. 2013;8(12):e84014.
102. Helmer C, Peres K, Letenneur L, Guttierrez-Robledo LM, Ramarosan H, Barberger-Gateau P, Fabrigoule C, Orgogozo JM, Dartigues JF. Dementia in subjects aged 75 years or over within the PAQUID cohort: prevalence and burden by severity. *Dement Geriatr Cogn Disord*. 2006;22(11):87–94.
103. Delva F, Touraine C, Joly P, Edjolo A, Amieva H, Berr C, Rouaud O, Helmer C, Peres K, Dartigues JF. ADL disability and death in dementia in a French

- population-based cohort: new insights with an illness-death model. *Alzheimers Dement*. 2016;12(8):909–16.
104. Peres K, Brayne C, Matharan F, Grasset L, Helmer C, Letenneur L, Foubert-Samier A, Baldi I, Tison F, Amieva H, et al. Trends in prevalence of dementia in French farmers from two epidemiological cohorts. *J Am Geriatr Soc*. 2017;65(2):415–20.
 105. Qian J, Wolters FJ, Beiser A, Haan M, Ikram MA, Karlawish J, Langbaum JB, Neuhaus JM, Reiman EM, Roberts JS, et al. APOE-related risk of mild cognitive impairment and dementia for prevention trials: an analysis of four cohorts. *PLoS Med*. 2017;14(3):e1002254.
 106. Ouvrard C, Meillon C, Dartigues JF, Avila-Funes JA, Amieva H. Psychosocioeconomic precariousness, cognitive decline and risk of developing dementia: a 25-year study. *Dement Geriatr Cogn Disord*. 2016;41(3–4):137–45.
 107. Avila-Funes JA, Carcaillon L, Helmer C, Carriere I, Ritchie K, Rouaud O, Tzourio C, Dartigues JF, Amieva H. Is frailty a prodromal stage of vascular dementia? Results from the Three-City study. *J Am Geriatr Soc*. 2012;60(9):1708–12.
 108. Babulal GM, Quiroz YT, Albeni BC, Arenaza-Urquijo E, Astell AJ, Babiloni C, Bahar-Fuchs A, Bell J, Bowman GL, Brickman AM, et al. Perspectives on ethnic and racial disparities in Alzheimer's disease and related dementias: update and areas of immediate need. *Alzheimers Dement*. 2019;15(2):292–312.
 109. Krysinska K, Sachdeva PS, Breitner J, Kivipelto M, Kukull W, Brodaty H. Dementia registries around the globe and their applications: a systematic review. *Alzheimers Dement*. 2017;13:1031–47.
 110. Dufouil C, Dubois B, Vellas B, Pasquier F, Blanc F, Hugon J, Hanon O, Dartigues JF, Harston S, Gabelle A, et al. Cognitive and imaging markers in non-demented subjects attending a memory clinic: study design and baseline findings of the MEMENTO cohort. *Alzheimers Res Ther*. 2017;9(1):67.
 111. Delgado C, Vergara R, Martinez M, Musa G, Henriquez F, Slachevsky A. Differential contribution of Neuropsychiatric symptoms and cognition on complex functionality across Alzheimer disease. *J Alzheimer's Dis*. 2019;67:381–92.
 112. Ahmed RM, Devenney EM, Irish M, Ittner A, Naismith S, Ittner LM, Rohrer JD, Halliday GM, Eisen A, Hodges JR, et al. Neuronal network disintegration: common pathways linking neurodegenerative diseases. *J Neurol Neurosurg Psychiatry*. 2016;87(11):1234–41.
 113. Nori VS, Hane CA, Martin DC, Kravetz AD, Sanghavi DM. Identifying incident dementia by applying machine learning to a very large administrative claims dataset. *PLoS One*. 2019;14(7):e0203246.
 114. Grassi M, Rouleaux N, Caldirola D, Loewenstein D, Schruers K, Perna G, Dumontier M. Alzheimer's Disease Neuroimaging I. A novel ensemble-based machine learning algorithm to predict the conversion from mild cognitive impairment to Alzheimer's disease using socio-demographic characteristics, clinical information, and neuropsychological measures. *Front Neurol*. 2019;10:756.
 115. Shao Y, Zeng QT, Chen KK, Shutes-David A, Thielke SM, Tsuang DW. Detection of probable dementia cases in undiagnosed patients using structured and unstructured electronic health records. *BMC Med Inform Decis Mak*. 2019;19(1):128.
 116. Aguirre-Acevedo DC, Jaimes-Barragan F, Henao E, Tirado V, Munoz C, Reiman EM, Tariot PN, Langbaum JB, Lopera F. Diagnostic accuracy of CERA D total score in a Colombian cohort with mild cognitive impairment and Alzheimer's disease affected by E280A mutation on presenilin-1 gene. *Int Psychogeriatr*. 2016;28(3):503–10.
 117. Jack CR Jr, Bennett DA, Blennow K, Carrillo MC, Dunn B, Haeberlein SB, Holtzman DM, Jagust W, Jessen F, Karlawish J, et al. NIA-AA research framework: toward a biological definition of Alzheimer's disease. *Alzheimers Dement*. 2018;14(4):535–62.

Publisher's Note

Springer Nature remains neutral with regard to jurisdictional claims in published maps and institutional affiliations.

Ready to submit your research? Choose BMC and benefit from:

- fast, convenient online submission
- thorough peer review by experienced researchers in your field
- rapid publication on acceptance
- support for research data, including large and complex data types
- gold Open Access which fosters wider collaboration and increased citations
- maximum visibility for your research: over 100M website views per year

At BMC, research is always in progress.

Learn more biomedcentral.com/submissions

