



**HAL**  
open science

## Towards harmonisation of image velocimetry techniques for river surface velocity observations

Matthew Perks, Silvano Fortunato Dal Sasso, Alexandre Hauet, Elizabeth Jamieson, Jérôme Le Coz, Sophie Pearce, Salvador Peña-Haro, Alonso Pizarro, Dariia Strelnikova, Flavia Tauro, et al.

### ► To cite this version:

Matthew Perks, Silvano Fortunato Dal Sasso, Alexandre Hauet, Elizabeth Jamieson, Jérôme Le Coz, et al.. Towards harmonisation of image velocimetry techniques for river surface velocity observations. Earth System Science Data, 2020, 12 (3), pp.1545-1559. 10.5194/essd-12-1545-2020 . hal-03127469

**HAL Id: hal-03127469**

**<https://hal.science/hal-03127469>**

Submitted on 1 Feb 2021

**HAL** is a multi-disciplinary open access archive for the deposit and dissemination of scientific research documents, whether they are published or not. The documents may come from teaching and research institutions in France or abroad, or from public or private research centers.

L'archive ouverte pluridisciplinaire **HAL**, est destinée au dépôt et à la diffusion de documents scientifiques de niveau recherche, publiés ou non, émanant des établissements d'enseignement et de recherche français ou étrangers, des laboratoires publics ou privés.



Distributed under a Creative Commons Attribution 4.0 International License



## Towards harmonisation of image velocimetry techniques for river surface velocity observations

Matthew T. Perks<sup>1</sup>, Silvano Fortunato Dal Sasso<sup>2</sup>, Alexandre Hauet<sup>3</sup>, Elizabeth Jamieson<sup>4</sup>, Jérôme Le Coz<sup>5</sup>, Sophie Pearce<sup>6</sup>, Salvador Peña-Haro<sup>7</sup>, Alonso Pizarro<sup>2</sup>, Dariia Strelnikova<sup>8</sup>, Flavia Tauro<sup>9</sup>, James Bomhof<sup>4</sup>, Salvatore Grimaldi<sup>9,10</sup>, Alain Goulet<sup>4</sup>, Borbála Hortobágyi<sup>1</sup>, Magali Jodeau<sup>11,12</sup>, Sabine Käfer<sup>13</sup>, Robert Ljubičić<sup>14</sup>, Ian Maddock<sup>6</sup>, Peter Mayr<sup>15</sup>, Gernot Paulus<sup>8</sup>, Lionel Pénard<sup>5</sup>, Leigh Sinclair<sup>17</sup>, and Salvatore Manfreda<sup>16</sup>

<sup>1</sup>School of Geography, Politics and Sociology, Newcastle University, Newcastle upon Tyne, UK

<sup>2</sup>Department of European and Mediterranean Cultures: Architecture, Environment and Cultural Heritage (DiCEM), University of Basilicata, 75100 Matera, Italy

<sup>3</sup>Electricité de France, DTG, Grenoble, France

<sup>4</sup>National Hydrological Services, Environment and Climate Change Canada, Gatineau, Canada

<sup>5</sup>INRAE, UR RiverLy, River Hydraulics, Villeurbanne, France

<sup>6</sup>School of Science and the Environment, University of Worcester, Worcester, UK

<sup>7</sup>Photrack AG: Flow Measurements, Ankerstrasse 16a, 8004 Zürich, Switzerland

<sup>8</sup>School of Geoinformation, Carinthia University of Applied Sciences, 9524 Villach, Austria

<sup>9</sup>Department for Innovation in Biological, Agro-food and Forest Systems, University of Tuscia, 10003 Viterbo, Italy

<sup>10</sup>Department of Mechanical and Aerospace Engineering, Tandon School of Engineering, New York University, Brooklyn, NY, 10003, USA

<sup>11</sup>Electricité de France, R&D, Chatou, France

<sup>12</sup>LHSV, Chatou, France

<sup>13</sup>Verbund Hydro Power GmbH, 9500 Villach, Austria

<sup>14</sup>Faculty of Civil Engineering, University of Belgrade, Belgrade 11120, Serbia

<sup>15</sup>flussbau iC, 9500 Villach, Austria

<sup>16</sup>Department of Civil, Architectural and Environmental Engineering, University of Naples Federico II, Via Claudio 21, 80125 Napoli, Italy

<sup>17</sup>National Hydrological Services, Environment and Climate Change Canada, Nanaimo, Canada

**Correspondence:** Matthew T. Perks (matthew.perks@newcastle.ac.uk)

Received: 30 July 2019 – Discussion started: 26 September 2019

Revised: 19 May 2020 – Accepted: 1 June 2020 – Published: 8 July 2020

**Abstract.** Since the turn of the 21st century, image-based velocimetry techniques have become an increasingly popular approach for determining open-channel flow in a range of hydrological settings across Europe and beyond. Simultaneously, a range of large-scale image velocimetry algorithms have been developed that are equipped with differing image pre-processing and analytical capabilities. Yet in operational hydrometry, these techniques are utilised by few competent authorities. Therefore, imagery collected for image velocimetry analysis (along with reference data) is required both to enable inter-comparisons between these differing approaches and to test their overall efficacy. Through benchmarking exercises, it will be possible to assess which approaches are best suited for a range of fluvial settings, and to focus future software developments. Here we collate and describe datasets acquired from seven countries across Europe and North America, consisting of videos that have been subjected to a range of pre-processing and image velocimetry analyses (Perks et al., 2020, <https://doi.org/10.4121/uuid:014d56f7-06dd-49ad-a48c-2282ab10428e>). Reference data are available for 12 of the 13 case studies presented, enabling these data to be used for reference and accuracy assessment.

## 1 Introduction

When designing hydrological monitoring networks or acquiring opportunistic measurements for determining open-channel flow, the optimum choice of apparatus is likely to be a compromise between the data requirements, resource availability, and the hydro-geomorphic characteristics of the site (Mishra and Coulibaly, 2009). Generally, hydro-geomorphic factors will include: channel width and depth, the range of flow velocities, presence of secondary circulation, and cross section stability. Each field measurement technique will have a designed range of optimum operating conditions under which robust flow measurements should be expected (e.g. ISO 24578:2012). However, under conditions beyond their designed operating range, greater levels of uncertainty will ensue. This may therefore preclude certain approaches for deployment under very shallow or flood flow conditions, for example. Logistical and practical constraints may also limit the deployment of apparatus. For example, techniques that require the device to be in contact with the water during operation may not be feasible for health and safety reasons during periods of high flow or due to staff availability (Harpold et al., 2006). As a result of some of these challenges, the potential for implementing alternative, non-contact approaches has been recently explored. Within this field of research, image velocimetry has emerged as an exciting new approach for determining a key hydrological characteristic, namely flow velocity.

Image velocimetry involves the application of cross-correlation or computer vision techniques on a series of consecutive images (or extracted video frames) to generate vectors of water velocities across a field-of-view. It was originally developed for use in highly controlled laboratory settings. However, since its original conception, its application has expanded from use in the laboratory (e.g. Dudderar and Simpkins, 1977; Adrian, 1984; Pickering and Halliwell, 1984) to include a wide variety of experimental conditions. Most notably it has been deployed outside of the controlled environment of the laboratory and into the domain of the field scientist (e.g. Fujita et al., 1998). It is now applied in complex environments including situations where lighting is not controlled, the camera platform may be mobile (e.g. on unmanned aerial systems, UASs), images may be acquired oblique to the direction of flow, and at an angle that changes over time (e.g. Detert and Weitbrecht, 2015; Tauro et al., 2016b; Perks et al., 2016).

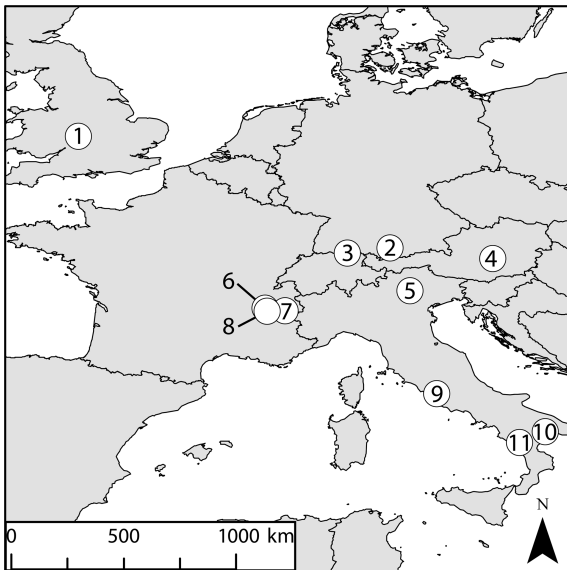
This technique is also becoming increasingly popular with the wider hydrological community (Tauro et al., 2018a), and this has been aided by two key factors. The first of which is the development of platforms and hardware that enable high-definition images and videos to be captured precisely, stored, and transferred to locations where image processing can occur. Secondly, many researchers utilising image velocimetry

techniques have chosen to develop their own specific processing capabilities, leading to the development of a range of both open-source and proprietary software for image pre-processing and velocimetry analysis (Table A1). Whilst this has led to a breadth of options for researchers conducting image velocimetry analysis, inter-comparisons of their efficacy under a range of environmental settings and flow regimes is currently lacking (Pearce et al., 2020). Therefore, there is an urgent need to comprehensively understand and appreciate limitations of the differing image velocimetry approaches that are available to the scientific community.

Here, we present a range of datasets that have been compiled from across seven countries in order to facilitate these inter-comparison studies (Fig. 1, Perks et al., 2020). These data have been independently produced for the primarily purposes of (i) enhancing our understanding of open-channel flows in diverse flow regimes and (ii) testing specific image velocimetry techniques. These datasets have been acquired across a range of hydro-geomorphic settings, using a diverse range of cameras, encoding software, and controller units. Image sequences have then been subjected to a range of differing image pre-processing steps using a range of image processing software. The compilation of these diverse datasets offers the research community a resource for addressing key challenges that have been identified in the use of image velocimetry algorithms. These include (but are not limited to) the potential for the characteristics of the seeding material (e.g. particle density) to affect the resultant velocity estimates (Dal Sasso et al., 2018; Pizarro et al., 2020), the impact of UAS movement on velocity measurements (Lewis and Rhoads, 2018), and the testing of different image stabilisation approaches to address this. Additional assessments may concern the role of image pre-processing (e.g. background suppression; Thielicke and Stamhuis, 2014) and the role of pixel resolution and video length on errors under differing flow conditions (Tauro et al., 2018b).

## 2 Experimental design

Given the range of image velocimetry techniques that have been developed in recent years, benchmarking datasets covering a range of hydro-geomorphic conditions and acquisition platforms are required in order to test the accuracy and precision of each algorithm for the determination of one- and two-dimensional surface velocities. The examples that we describe in this section have been acquired by a range of platforms, including UAS and fixed and handheld cameras. The geographical characteristics of the sites also widely varied. Catchment areas span 20–17 460 km<sup>2</sup>, captured channel widths range from 5–59 m, minimum flow depth is 0.10 m with a maximum of over 7 m, and mean flow velocities range from 0.13 to over 6 m s<sup>-1</sup>. Where possible, reference data generated by established and widely accepted approaches



**Figure 1.** Locations of the monitoring sites from which data are presented: (1) River Arrow, UK; (2) River Thalhofen, Germany; (3) Murg River, Switzerland; (4) Alpine river, Austria; (5) River Brenta, Italy; (6) La Morge, France; (7) St. Julien torrent, France; (8) River La Vence, France; (9) River Tiber, Italy; (10) River Bradano, Italy; (11) River Noce, Italy. Not shown are the following rivers in North America: (12) Castor River, Canada, and (13) Salmon River, Canada. Map spatial reference: ETRS (1989).

(e.g. current meter and acoustic Doppler current profiler, ADCP) have been collected simultaneously or at the same river stage as the images are acquired. The details pertaining to the hydrological conditions of deployment, configuration of the camera setup, pre-processing of imagery, and (where relevant) details of published results from these datasets are presented in the following sections and summarised in Table A2.

## 2.1 River Arrow, UK

On 1 November 2017, a field experiment was undertaken on the River Arrow in Warwickshire, UK, to ascertain the accuracy of two differing image velocimetry approaches. The location of this experiment was in the mid-reaches of the catchment, with a contributing area of 94 km<sup>2</sup>. This is a stable, meandering section of the river with an approximate width of 5 m. During the experiment, mean depth and velocity were 0.22 m and 0.42 m s<sup>-1</sup>, respectively, and water turbidity was minimal, with the gravel bed being clearly visible in the footage.

The two deployments differed, as both fixed (bankside pole-mounted) and mobile (UAS) imaging systems were used. Footage acquired from these two systems was captured concurrently, permitting direct comparisons to be made between the two. The mobile imaging system consisted of a DJI Phantom 4 Pro UAS equipped with a 1 in. (2.54 cm) cam-

era CMOS sensor. This was used to collect nadir footage, with the camera's y axis orthogonal to the direction of flow. Video was collected by the UAS for 4 min 18 s whilst hovering at an elevation of approximately 20 m over the field of interest (Fig. 2a). Footage was recorded at a pixel resolution of 1920 × 1080 and frame rate of 30 Hz. The second approach consisted of a GoPro Hero 4 mounted at an oblique angle on a stationary telescopic pole at a height of approximately 2 m above the water surface. Video footage was simultaneously collected for 5 min 37 s at a pixel resolution of 1920 × 1080 and frame rate of 30 Hz. During the period of recording, sequences consisting of both unseeded flow and artificially seeded flow are visible. For the seeded element, cornstarch Ecofoam chips were added to the water surface immediately upstream of the area of interest. These tracers are clearly visible in the footage and are distributed evenly in the cross section. Seeding was carried out to enhance the availability of traceable features in the low-flow conditions.

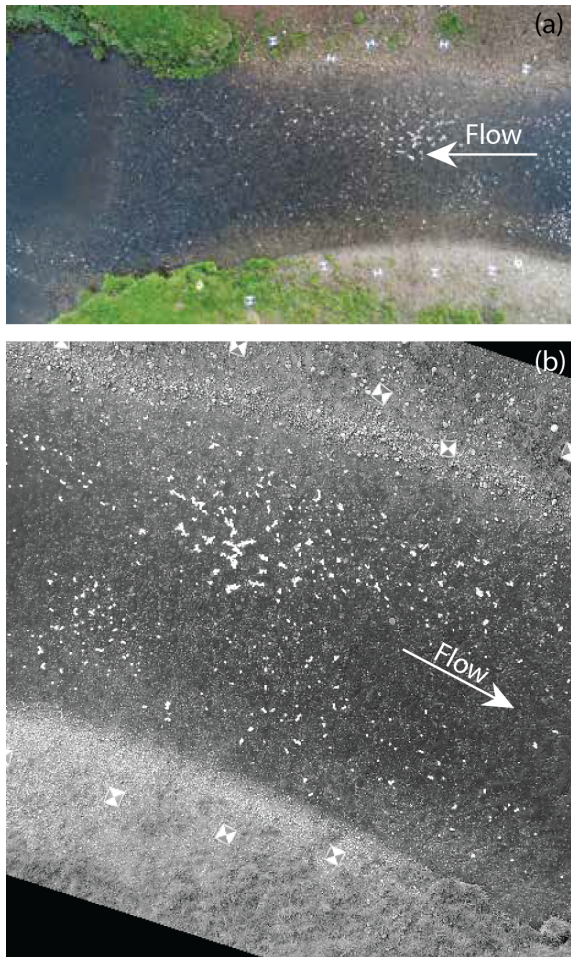
From the recordings, datasets each consisting of 99 consecutive images (sampled at a frame rate of 5 Hz and converted to greyscale intensity) were extracted from both the UAS and GoPro footage under both seeded and unseeded conditions. As a result of camera movement for both the UAS and GoPro footage, image sequence stabilisation was carried out using Fudaa-LSPIV (Table A1). In order to enable the conversion of pixel units to metric units, a total of 10 ground control points (GCPs), which were visible throughout the duration of the video, were distributed across both banks (Fig. 2a). These GCPs were surveyed and their positions utilised for image orthorectification using Fudaa-LSPIV (Table A1). Subsequently, the orthorectified images have a scaling of 0.0174 m px<sup>-1</sup> (Fig. 2b).

Reference data were obtained through the deployment of a Valeport 801 electromagnetic current meter. Measurements were made for a period of 30 s just below the water surface, with the time-averaged value being reported. Measurements were obtained for five cross sections spaced approximately 1.5–2 m apart, within which 9–10 individual measurements were obtained with a spacing of 0.5 m between each. The location of each measurement is provided in pixel units based on the stabilised and orthorectified imagery of the UAS and GoPro.

## 2.2 River Thalhofen, Germany

On 27 July 2017, a Vivotek IB836BA-HT network surveillance camera was utilised to capture footage for image velocimetry analysis on the River Thalhofen in Germany. At the time of deployment, the river width was approximately 28 m, the river stage was 1.45 m, and ADCP derived discharge and mean velocity were 52.52 m<sup>3</sup> s<sup>-1</sup> and 1.7 m s<sup>-1</sup>, respectively. The camera was fixed in location, with the camera lens at an approximate angle of 25° from nadir and the image y axis approximately 5° from being perpendicular to the direction of flow. Images were collected for a duration of 2 s at a reso-





**Figure 2.** (a) Footage acquired by the Phantom 4 UAS over the River Arrow and (b) following orthorectification and greyscale conversion. The Ecofoam chips and ground control points are clearly visible in both images. The direction of flow is indicated by the arrows.

lution of  $1280 \times 800$  px and frame rate of 30 Hz. Despite the presence of highly turbid water, which can diminish contrast across the water surface, the presence of highly visible turbulent structures advecting downstream offers the potential for the extraction of surface velocity information from these images. Image pre-processing consisted of orthorectification (using Photrack software; see Table A1) and colour conversion to greyscale. A total of 56 consecutive images that have been subjected to these processing steps are presented here at their original frame rate of 30 Hz. The pixel dimensions of the processed imagery are 0.01 m in the  $x$  and  $y$  axes.

Reference data were acquired by means of a Teledyne RiverPro ADCP and consist of a single transect consisting of 280 measurements along the cross section with an average spacing of 0.09 m. ADCP data were acquired with a bin depth of 0.06 m, with the uppermost measurement occurring at a distance of 0.22 m below the water surface.

### 2.3 Murg River, Switzerland

On 6 April 2016, aerial surveys were undertaken in order to acquire imagery for determining the bathymetry and surface velocity and to subsequently derive the flow discharge of the Murg River, Switzerland (Detert et al., 2017). The experiment took place in the middle reaches of the catchment, with a contributing area of  $212 \text{ km}^2$ . The experimental reach was a stable, straight section totalling 75 m in length, along which, the water depth was approximately 0.35 m and channel width was 12 m. The discharge at the time of survey was  $2.76 \text{ m}^3 \text{ s}^{-1}$ . For the aerial survey a DJI Phantom FC40 was deployed at a stable altitude of 30 m to track the movement of artificial tracers throughout the reach. The UAS was equipped with a GoPro Hero3+ Black Edition 4K camera, which is capable of capturing a large spatial footprint whilst deployed at a relatively low altitude. However, this also generates a considerable barrel distortion effect that must be overcome during image processing. This system was used to collect nadiral footage, with the camera's  $y$  axis perpendicular to the flow direction. Video footage was acquired for a period of 2 min 11 s at a pixel resolution of  $4096 \times 2160$  and a frame rate of 12 Hz. During image acquisition, the water was clear, with the channel bed visible in places. These conditions resulted in a lack of naturally occurring features visible on the water surface that could be used to determine surface velocity. Therefore, throughout the duration of the experiment, spruce woodchips were applied to the water surface from a bridge at the upper extent of the monitored reach. This artificial seeding produced a dense, vivid, and homogeneously distributed pattern of features, the displacement rate of which is considered to equate to the surface velocity. From the video recordings, 1000 images were orthorectified using Photoscan (Agisoft). This was achieved through the input of geographical coordinates relating to 14 GCPs that were visible at varying times throughout image sequence. This approach is discussed further in Detert et al. (2017). The subsequent orthorectified images are presented at a time step of 0.083 s, and the raster pixel scale was consistently set at  $64 \text{ px m}^{-1}$ , equivalent to pixel dimensions of 0.0156 m in the  $x$  and  $y$  axes. Metadata describing the scale of the image per pixel and the  $[x, y]$  coordinate of the upper-left pixel of each image are provided in the corresponding .jgw file.

Reference data were acquired through the deployment of a Teledyne RDI StreamPro ADCP across a single transect in the upper reaches of the studied site. ADCP data were acquired with a bin depth of 0.02 m, with the uppermost measurement occurring at a distance of 0.14 m below the water surface. A total of 85 measurements of the velocity magnitude are presented with an average spacing of 0.14 m.

### 2.4 Alpine river, Austria

On 7 August 2019, aerial surveys were undertaken in order to assess the flow conditions at the turbine outlet of a hy-

dropower dam, the entrance of a fish passage, and the area immediately downstream of these features (Strelnikova et al., 2020). The Alpine river (epithet), is located in Austria, and can be characterised as having a nivo-glacial hydrological regime, with a drainage area of 1057 km<sup>2</sup> and a mean flow discharge of over 32 m<sup>3</sup> s<sup>-1</sup>. At the time of data acquisition the water turbidity was minimal, such that a rocky brown-green riverbed was distinctly visible. Several rocky islands and multiple boulders were located in the middle of the river section of interest. The river section contained turbulent spots and was characterised by heterogeneous flow conditions, with partially opposite flow directions and velocities ranging from 0 to approximately 2 m s<sup>-1</sup>. Within the study area, the river was up to 35 m wide, with depths ranging from 0.10 to 2 m.

Footage of the area was recorded using a DJI Mavic Pro UAS in a hovering mode from an altitude of 50 m at a frame rate of 25 Hz, with a resolution of 3840 × 2160 px. The built-in camera of the UAS was directed at nadir. During data acquisition, the flow was artificially seeded with biodegradable cornstarch Ecofoam. Individual Ecofoam pieces had a cylindrical shape that was 1.5–2 cm in diameter and 4.5–6 cm in length. Tracers were added into the flow from seven locations: over the entrance into the fish ladder, over the turbine outlet, from the islands, and from both banks. The duration of an acquired video was 5 min. From this video, a dataset of 897 images was extracted at 12.5 Hz and stabilised using a custom MATLAB script. A subset of the footage was used in a study described by Strelnikova et al. (2020).

For image calibration, 11 GCPs visible in each of the extracted frames were used. A total of 7 GCPs were distributed across both river banks, and 4 GCPs were located on the islands. The GCPs were surveyed with the use of a differential GPS with an accuracy of ±3 cm. The pixel dimensions of the calibrated imagery are 0.021 m in the  $x$  and  $y$  axes.

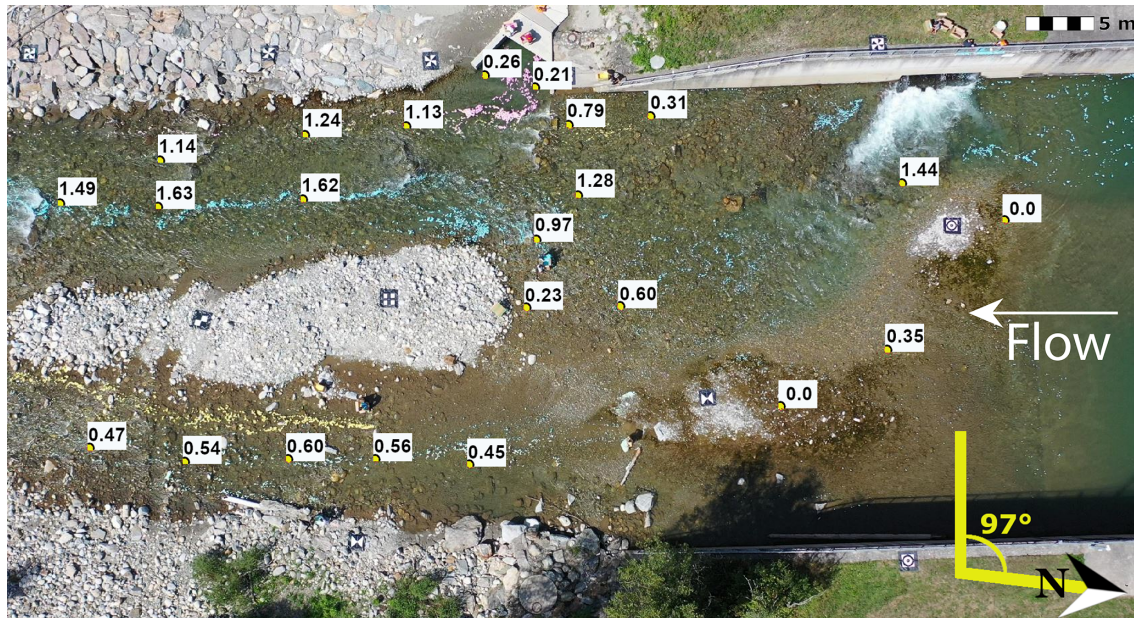
An OTT C31 propeller current meter was used to perform reference measurements just below the water surface at 23 locations. During reference data acquisition the propeller axis aligned with the direction of the flow. The duration of measurement at each point was 1 min. The distribution of reference measurements (Fig. 3) was selected in a way that described all important components of the heterogeneous flow: the flow from the fish ladder entrance, the dominant flow from the turbine outlet, areas around the main flow curve, and two branches of the main flow after its split. Flow directions were determined using a compass with 10° precision in degrees from north. The footage was recorded in a way that north corresponded to 97° measured in the clockwise direction from the image top (see the north arrow in the bottom right corner of Fig. 3). The locations of reference measurements were determined with the use of a differential GPS with an accuracy of ±3 cm. The accuracy of the propeller current meter was ±2 %.

## 2.5 River Brenta, Italy

Two distinct experimental approaches have been adopted to generate datasets that describe flows in the 252 km<sup>2</sup> catchment of the River Brenta. The first involved the temporary installation of a GoPro Hero 4 Black Edition camera attached to a telescopic apparatus on the downstream side of a bridge (Tauro et al., 2014). During this deployment, river flow was low, with an observed mean velocity of 0.38 m s<sup>-1</sup>. To compensate for the lack of naturally occurring features on the water surface, woodchips were manually added to the river upstream of the monitoring site, resulting in continuous and relatively homogeneous coverage for the 20 s duration of the image sequences. The camera's field of view was 9.5 × 5.3 m<sup>2</sup> and was configured to collect 1920 × 1080 HD videos at a frame rate of 50 Hz. Distortion of the images as a result of the fisheye lens was removed using the open-source software *GoPro Studio*. No subsequent orthorectification of the images was required due to the camera apparatus being installed perpendicular to the water surface. The pixel dimensions of the processed imagery were 0.005 m in the  $x$  and  $y$  axes. This could be established either through the projection of two lasers at a fixed and known distance apart to the surface of the river or through identification of a fixed and known object in the field of view. In terms of pre-processing of the imagery, an area of 552 × 375 pixels in the bottom right corner of the images was masked with a black patch. This was to eliminate noise generated by mobile vegetation within the frame. Original RGB images were converted to greyscale intensity by eliminating hue and saturation information and retaining the luminance. To emphasise lighter particles against a dark background, images were gamma corrected to darken mid-tones. A total of 12 separate image sequences lasting 20 s, sub-sampled at 25 Hz, and consisting of 500 frames each are presented here.

The second experimental approach involved the temporary deployment of a FLIR Systems AB ThermaCAM SC500. This was suspended from a mobile supporting structure on the downstream side of a bridge at approximately 7 m above the water surface (Tauro and Grimaldi, 2017). As opposed to capturing images in the usual red, green, and blue bands, this camera is sensitive to thermal infrared radiation, generating a monochrome image with values proportionate to the thermal properties of the objects within the field of view. The application of this approach for image velocimetry requires a distinct thermal signal to be present from either natural (e.g. tributary confluences with water of differing thermal properties) or artificial sources. In this instance, an artificial thermal signal was introduced in the form of ice dices. These were deployed upstream of the bridge and were observed transiting across the field of view as a result of their thermal properties being sufficiently different to those of the water surface. Despite the image resolution being a modest 318 × 197 pixels with a frame rate of 5 Hz, this was still sufficient to enable movement of the ice dices to be tracked.





**Figure 3.** A snapshot from footage acquired proximal to a fish ladder on the Alpine river. The distribution of reference measurements with corresponding velocity magnitudes ( $\text{m s}^{-1}$ ) are shown. The dominant direction of flow is indicated by the arrow.

Geometric calibration of the images was achieved by identifying features of known dimensions within the video sequence (i.e. three wooden sticks). The pixel dimensions of the processed imagery are 0.009 m in the  $x$  and  $y$  axes. Here we present an image sequence consisting of 80 consecutive frames captured over 16 s.

Reference validation data are available in the form of velocity measurements taken at just 3 cm below the water surface at four locations along the stream cross section using an OTT Hydromet C2 current meter. At each measurement location 12 replicate measurements were made (Tauro et al., 2017).

## 2.6 La Morge River, France

Within Electricité De France's (EDF) network of over 300 hydrological monitoring stations for the optimal management of water resources, image-based velocimetry approaches have recently been adopted. This approach has been specifically adopted with the aim of reducing uncertainty under high-flow conditions (Hauet, 2016). These conditions can develop rapidly, particularly during the summer months as a result of convective storms, posing difficulties for traditional monitoring approaches. However, this setup may also be applied to capture images for the determination of surface velocity under more quiescent conditions. Here, we present images captured on 13 January 2015 in the small ( $46 \text{ km}^2$ ), urban catchment of La Morge with a mean altitude of 270 m. Flow conditions were typical, with a cross section width of 7.2 m, mean depth of 0.41 m, and mean velocity of  $0.39 \text{ m s}^{-1}$ . The imaging system used consisted of an ana-

logue Panasonic WV-CP500 camera with a focal length of 4 mm. This camera was mounted at an elevated position on a 3 m pole on the right bank of the channel, oriented in an upstream direction. Images were collected with an effective pixel resolution of  $640 \times 480$  at a frame rate of 5 Hz for a duration of 10 s, resulting in the generation of 48 images. On this occasion, manual seeding of corn chips took place immediately upstream of the camera's field-of-view to enhance the occurrence of features for tracking purposes. This is typically required where natural seeding is inhomogeneous or completely lacking. Following acquisition of the footage, images were converted to greyscale and orthorectified using Fudaa-LSPIV to generate images in which 1 pixel represents a real-world distance of 0.01 m.

Reference data were acquired 5 m downstream of the video acquisition location so as to not interfere with the recorded footage. Therefore, comparisons between measured velocities using image velocimetry and traditional gauging methods in the same cross section is not possible. However, a comparison of the computed river discharge from the differing methods is possible. At the upstream location (the camera-monitored reach), water depth measurements are available for two transects separated by approximately 6 m with an average spacing between points of 0.25 m. Through the application of image velocimetry techniques, water depth measurements, and an appropriate value relating the surface velocity to the depth-averaged velocity (estimated to be 0.85), river discharge can be computed. At 5 m downstream of the camera, velocity data were acquired through the use of a mechanical current meter, with measurements taken at 0.2,

0.6, and 0.8 of the river depth. A total of 15 measurements were made along the cross section at intervals of 0.5 m. Detailed measurements are provided along with the river discharge computed from these observations. Given the small distance of 5 m between the location of the recorded video footage and in-stream measurements and the lack of gains or losses within the reach, river discharge would be the same value at both locations.

## 2.7 St. Julien torrent, France

A high-magnitude flash flood occurred in the St. Julien torrent system during August 2011. This was captured by a local storm chaser using a Canon EOS 5D mark II camera with a 16 mm fisheye Zenitar lens. Like many headwater systems across Europe, no hydrological monitoring networks are present in this torrent system. Therefore, this footage provides a rare insight into the hydraulic processes occurring during a flash flood in a steep, small (20 km<sup>2</sup>) torrent system where mean flow velocities are approximately 6 m s<sup>-1</sup>. The footage itself was recorded at a resolution of 1920 × 1080 px at a frame rate of 25 Hz (Fig. 4a). The footage was not filmed from a fixed location; therefore, complications involving camera movement and orthorectification had to be overcome. These steps are explained in detail in Le Bouricaud et al. (2016). Following correction for these factors, a sequence of 51 consecutive and geometrically stable images are produced (Fig. 4b). Each pixel width represents a metric scale of 0.03 m. Despite the lack of detailed reference velocity measurements for this case study, researchers interested in reconstructing flash flood processes may find it valuable for understanding how the range of available methods perform relative to each other, given that image velocimetry techniques perhaps offer the best opportunity to estimate flows under these extreme conditions.

## 2.8 River La Vence, France

On 8 May 2019, a Samsung Galaxy S7 was utilised to capture footage for image velocimetry analysis on the River La Vence, a 63.75 km<sup>2</sup> catchment in France. At the time of deployment, the river width was approximately 6.3 m, with a river stage of 0.44 m. A discharge of 1.15 m<sup>3</sup> s<sup>-1</sup> and mean velocity of 0.65 m s<sup>-1</sup> were observed. The camera was fixed in location, with the camera lens angled at approximately 31° from nadir and the image *x* axis at approximately perpendicular to the direction of flow. Images were collected for a duration of 5 s at a resolution of 1920 × 1080 px and frame rate of 30 Hz. The presence of visible turbulent structures advecting downstream offer the potential for the extraction of surface velocity information from this footage. Image pre-processing consisted of orthorectification, and colour conversion to greyscale. A total of 150 consecutive images that have been subjected to these processing steps are presented here



**Figure 4.** (a) Original footage of a flash flood in the St. Julien torrent acquired by a storm chaser equipped with Canon EOS 5D mark II camera. (b) Orthorectified and geometrically stable image with the field of view clipped to the lower 50 % of the image. The direction of flow is indicated by the arrows.

at their original frame rate of 30 Hz. The pixel dimensions of the processed imagery are 0.008 m in the *x* and *y* axes.

Reference data were acquired by means of a HydroProfiler M-pro ADCP and consist of a single transect consisting of eight measurements with an average spacing of 0.7 m. ADCP data were acquired with a bin depth of 0.003 m with the uppermost measurement occurring at a distance of 0.101 m below the water surface.

## 2.9 River Tiber, Italy

A permanent gauge station on the River Tiber, Italy, was installed to test the feasibility for automated image velocimetry methods to quantify the flow rates of a major European river with a catchment area of 17 460 km<sup>2</sup>. This deployment involves the use of a Mobotix FlexMount S15 IP camera attached to the underside of Ponte del Foro Italico, in the city of Rome (Tauro et al., 2016a). The wide-angle lens on the SP15 camera introduces distortion into the images, which was subsequently removed using the Adobe Photo-



shop Lens correction filter. In a similar setup to the first of the River Brenta approaches, this camera is positioned orthogonal to the water surface, thereby circumventing the need for orthorectification of the generated images. Transformation of the camera pixels (px) to metric units (m) was again achieved by firing lasers of a known distance apart at the water surface. The image can be scaled to metric distances given:  $1 \text{ px} = 0.016 \text{ m}$ . The camera itself generated videos with a resolution of  $2048 \times 768 \text{ px}$ . However these were sub-sampled to  $865 \times 530 \text{ px}$  at a frame rate of  $\approx 6.95 \text{ Hz}$  during pre-processing. The data specifically presented here consists of 410 consecutive frames collected over a 60 s period during a moderate flood event in February 2015. At the time of acquisition, the river stage was 7.23 m and the average surface velocity (measured by a RVM20 speed surface velocity radar) was  $2.33 \text{ m s}^{-1}$  (Tauro et al., 2017). Whilst only a single reference velocity value is available, this measurement is representative of the surface velocities within a surrounding area of approximately  $3 \times 3 \text{ m}^2$ . The approximate spatial footprint of the surface velocity radar measurement is provided in pixel units.

## 2.10 River Bradano, Italy

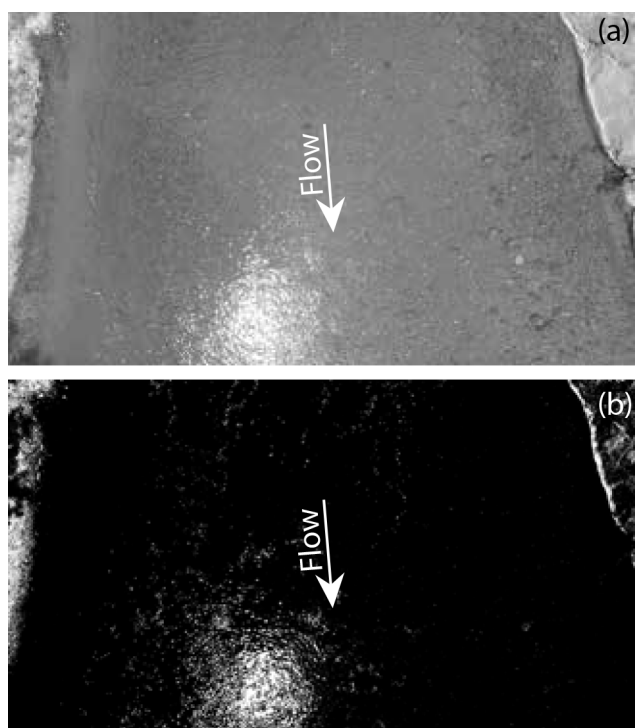
On 14 October 2016, an experiment was undertaken in order to explore the optimal setup for the acquisition of surface flow velocity measurements using an UAS (Dal Sasso et al., 2018). The experiment took place in the valley portion of the Bradano River, located in the Basilicata region of Italy. This large alluvial river has a catchment area of  $2581 \text{ km}^2$  and is characterised by low gradient (0.1 %) and low relative submergence (Dal Sasso et al., 2018). At the time of the experiment, the cross section width was 11.4 m, with a maximum depth of 0.80 m. The average surface velocity was  $0.75 \text{ m s}^{-1}$  and total discharge was  $3.97 \text{ m}^3 \text{ s}^{-1}$ . During the experiment, a DJI Phantom 3 Pro UAS equipped with a Sony EXMOR 1/2.3 in. (1.10 cm) CMOS camera sensor was deployed.

The UAS hovered over the centre of the River Bradano with a nadir camera positioned perpendicular to the direction of flow. An area of  $17.0 \times 9.6 \text{ m}^2$  was imaged, including the entire cross section of interest (with a width of approximately 11.4 m). Video footage was captured for a duration of 1 min 43 s at a pixel resolution of  $1920 \times 1080$ , and a frame rate of 24 Hz. Due to the high turbidity of the flow, there is a weak natural contrast across the image which diminishes the number of naturally occurring visible tracers. Therefore, throughout the duration of the footage, operatives manually introduced charcoal to the water surface immediately upstream of the monitoring site. The colour of these particles was sufficiently distinct from the background to enable their displacement to be optically tracked. However, the distribution of these tracers is generally limited to the central portion of the flow, which may limit the availability of traceable features towards the channel boundaries. Following collection of the footage, a number of processing steps

were subsequently undertaken. This included conversion of the greyscale images to black and white, and contrast correction in order to more prominently highlight the artificial tracers on the water surface. A total of 600 images that have been subjected to these processing steps are available at their original resolution and frame rate. An additional processing step involved the stabilisation of the image sequence to minimise apparent movement of the platform. Transformation of the images from pixel units to metric distance can be achieved using the following function:  $1 \text{ px} = 0.009 \text{ m}$ . Validation data in the form of surface velocities was obtained at seven points in the cross section, at 1 m intervals using a Seba F1 current flowmeter. The locations of these measurements are provided in pixels relative to the first frame of the stabilised image sequence.

## 2.11 River Noce, Italy

On 26 July 2017, in the middle reaches of the  $413 \text{ km}^2$ , single-thread, River Noce, a DJI Phantom 3 Pro UAS Sony EXMOR 1/2.3 in. (1.10 cm) CMOS sensor was deployed to capture footage for image velocimetry analysis (Dal Sasso et al., 2018). At the time of deployment, water levels were low, with an observed discharge of  $1.70 \text{ m}^3 \text{ s}^{-1}$  and mean velocity of  $0.43 \text{ m s}^{-1}$ . Turbidity was also minimal, resulting in the gravel bed being distinctly visible in the footage. The camera was oriented with its  $x$  axis perpendicular to the water surface, enabling the 14.6 m wide channel to be fully observed (Fig. 5a). Images were collected for a duration of 1 min 48 s at a resolution of  $3840 \times 2160 \text{ px}$  and frame rate of 24 Hz. The clear water and bright sunlight results in non-homogeneous illumination of the water surface. This is particularly apparent in the lower-left quarter of the video frame. Naturally occurring tracers are also largely absent, making these challenging conditions for the application of image velocimetry techniques. To offset these issues, woodchips were introduced upstream of the monitoring location. These features were visibly brighter than the background, enabling their transition to be detected optically. Image processing consisted of contrast stretching and conversion of greyscale images to black and white in order to enhance the visibility of the artificial tracers against the background (Fig. 5b). A total of 70 consecutive images that have been subjected to these processing steps are presented here at a downscaled resolution of  $1920 \times 1080 \text{ px}$  and frame rate of 12 Hz. Following sub-sampling, each pixel in the image represents a distance of 0.009 m in metric units. Validation data in the form of surface velocities were obtained at 13 locations at 1 m intervals along the cross section using a Seba F1 current flowmeter. The locations for each of these measurements is provided in pixel units.



**Figure 5.** (a) Greyscale footage acquired by the Phantom 3 UAS over the River Noce and (b) the same image following contrast stretching. The direction of flow is indicated by the arrows.

## 2.12 Castor River, Canada

Here we present footage acquired from the middle reaches of the Castor River in Ontario, Canada ( $45.26194^\circ$  latitude,  $-75.34444^\circ$  longitude). At this location, the channel is a stable, single-thread, meandering river with a catchment-contributing area of  $439 \text{ km}^2$ . Footage was acquired on two separate occasions, consisting of very different flow conditions.

The first set of videos were acquired on 10 April 2019 using a Hikvision DS-2CD2T42WD-I5 4 mm IP camera. This was mounted on the left bank at an oblique angle of  $57^\circ$  from nadir. Video footage was captured consisting of three 30 s videos at a resolution of  $2688 \times 1520 \text{ px}$  and frame rate of 20 Hz. The first 2–3 s of each recording have been removed from the submission as these frames experienced compression and frame rate issues. However, the remainder of the video is unaffected. The videos were captured over a duration of approximately 4.5 h and over this time the river stage was stable, varying between 3.772 m at 11:25, 3.769 m at 13:45, and 3.77 m at 15:55 (local time). Under these moderate flow conditions, mean velocity was observed to be  $1.26 \text{ m s}^{-1}$ , with mean and maximum depths of 0.80 and 1.19 m, respectively, within the 27 m wide river. No image stabilisation was performed on the image sequence and the imagery was orthorectified using KLT-IV (Perks et al., 2020) and the use of 12 ground control points. These control points were placed

at varying heights across both sides of the channel, and the distances and horizontal and vertical angles between points were surveyed using a tripod-mounted Leica S910. This enabled a local coordinate system to be developed relative to a local benchmark. In the resultant imagery each image pixel represents a distance of 0.01 m in metric units.

Reference data were acquired through the deployment of a Teledyne RDI StreamPro ADCP, with four transects being completed across a single cross section. ADCP data were acquired with a bin depth of 0.05 m with the uppermost measurement occurring at a distance of 0.17 m below the water surface. Between 149 and 219 velocity magnitude measurements are reported for each transect, with an average spacing between measurements of 0.12–0.18 m. The location of each velocity magnitude measurement is reported in pixel units based on the orthorectified imagery.

The second video set obtained at Castor River was acquired on 9 July 2019 and consists of a single 27 s video. This was acquired from the left bank using a ACTI A31 IP camera, mounted at an oblique angle of  $54^\circ$  from nadir. Video footage was recorded at a resolution of  $1920 \times 1080 \text{ px}$  and frame rate of 30 Hz. At the time of acquisition, river levels were low, with a reported stage of 3.128 m. At this time, the river was 21 m wide with a mean and maximum depth of 0.45 and 0.62 m, respectively. Observed discharge was  $0.93 \text{ m}^3 \text{ s}^{-1}$  with a mean velocity of  $0.13 \text{ m s}^{-1}$ . No image stabilisation was performed on the image sequence and the imagery was orthorectified using KLT-IV and the same ground control points as the previous set of videos. In the resultant imagery each image pixel represents a distance of 0.01 m in metric units. Reference data were acquired using a FlowTracker2 handheld acoustic Doppler velocimeter. Velocity measurements were made at four locations along a single cross section and at percentage depths of 0 (i.e. water surface), 20 %, 40 %, 60 %, 80 %, and 100 %. The  $x$  and  $y$  velocity components are reported along with the mean velocity. The location of each velocity measurement is reported in pixel units based on the orthorectified imagery.

## 2.13 Salmon River, Canada

On 4 June 2019, a DJI Phantom 4 Pro was used to acquire footage over the Salmon River in British Columbia, Canada ( $50.312222^\circ$  latitude,  $-125.907500^\circ$  longitude). Footage was acquired immediately downstream of the confluence between the Salmon River and the smaller White River. Here, the catchment contributing area is  $1210 \text{ km}^2$ , and a 59 m wide single-thread channel is present. At the time of image acquisition, river levels were low, with an average depth of 0.65 m, a reported discharge of  $22.9 \text{ m}^3 \text{ s}^{-1}$ , and mean velocity of  $0.65 \text{ m s}^{-1}$ . A 1 min video was collected with a view angle of approximately nadir whilst hovering at an elevation of 102 m over the field of interest. The footage was acquired at a resolution of  $1920 \times 1080 \text{ px}$  and a frame rate of 24 Hz. Present within the field of view are four ground control points located

on both sides of the channel. The straight-line distances between each of the ground control points were measured and a local coordinate system developed following the principles of trilateration. A two-stage processing method was adopted to generate imagery suitable for velocimetry analysis. This consisted of (i) image stabilisation and (ii) orthorectification. These were performed using the built-in functionality of KLT-IV (Table A1). Following processing, each image pixel represents a distance of 0.01 m in metric units. Reference velocity data were acquired using a FlowTracker handheld acoustic Doppler velocimeter and this consists of measurements at 26 locations along a single cross section at intervals of approximately 3 m. These measurements were obtained at 60 % of the water depth, and the mean velocity is reported. The location of each velocity measurement is reported in pixel units based on the orthorectified imagery.

### 3 Data availability

Datasets presented in this manuscript can be readily downloaded from the following website: <https://doi.org/10.4121/uuid:014d56f7-06dd-49ad-a48c-2282ab10428e>. Data includes the footage and imagery required for image velocimetry analysis, plus validation data for 12 of the 13 case studies presented. Please contact the corresponding author if further details are required (Perks et al., 2020).

### 4 Conclusions

Applied hydrology research, focusing on the quantification of fluid flow processes in river systems, has been greatly enhanced by the availability of large-scale image velocimetry techniques (e.g. Table A1). The flexibility of these approaches has led to improvements in the understanding of hydrological processes in otherwise difficult to access environments. This has been possible through image capture using a range of platforms, including unmanned aerial systems, thermal infrared cameras, Go-Pros, and IP cameras, which enable non-contact sensing of the waterbody. Consequently, a growing, but disparate, range of imagery datasets has been produced (e.g. Table A2). Here we collate and describe a range of these example datasets, most of which have validation data in the form of velocity measurements undertaken using standard operational approaches (e.g. current flowmeter, ADCP, radar).

This unique dataset represents the first step in creation of a community database for image velocimetry benchmarking studies. It offers the hydrological community the opportunity to assess the accuracy of existing approaches under a range of conditions. Key comparisons may be made surrounding the relative impact of the seeding characteristics (e.g. River Arrow, Murg River), the type of sensor used (e.g. River Brenta), the potential for background noise, e.g. glare, visible river bed, to be filtered (e.g. Salmon River), and the impacts of stabilisation on velocity outputs (e.g. River Bradano, Alpine river).

The generation of similar datasets of images is widely used to evaluate the effectiveness and accuracy of algorithms in related fields such as fluid mechanics (e.g. Okamoto et al., 2000), and we envisage such a dataset for large-scale fluvial environments will encourage further scientific assessment and development of image velocimetry approaches.

Though the diversity of experimental settings and data formats included in this dataset may limit the inter-comparability of experiments, this dataset is well suited for comparison of different algorithms within the framework of one selected study. An advantage of the dataset is that it is representative of the multitude of possible experimental settings. Techniques tested and tailored with the help of such a diverse dataset are expected to be more robust, and their limitations are expected to be easier to identify. Ultimately, forensic assessment of these techniques will provide researchers and competent authorities with a greater understanding of their applicability. Further efforts will be put into extending the dataset and unifying data formats both for optical data and ground truth data included, with the goal of creating a standardised database that explicitly facilitates testing of a selected technique in different experimental settings.



## Appendix A

**Table A1.** Details of software developed for image velocimetry analysis.

Software	Key functions	Availability
Fudaa-LSPIV <sup>a</sup>	Sample images from movies, image orthorectification, cross-correlation, data filtering, discharge computation	Open-source interface, free executables
KLT-IV <sup>b</sup>	Lens distortion removal, image stabilisation and orthorectification, tracking individual trajectories, discharge computation	Proprietary software
KU-STIV <sup>c</sup>	Distortion removal, orthorectification, image stabilisation, image pattern coherence	Proprietary software
LSPIV app <sup>d</sup>	Camera calibration, image orthorectification, cross-correlation, image pattern coherence	Free app for Android and iOS
MAT PIV <sup>e</sup>	Image coordinate transformation, cross-correlation, post-processing filters	Free toolbox for MATLAB
OTV <sup>f</sup>	Tracking individual trajectories and average surface flow velocity estimation	Proprietary software
Photrack, SSIV <sup>g</sup>	Image orthorectification, cross-correlation, flow surface structure filtering, results filtering, discharge estimation. Stand-alone camera system for continuous measurement (DischargeKeeper) or in a smart-phone application (DischargeApp)	Proprietary software
PIVlab <sup>h</sup>	Image pre-processing, direct cross-correlation, discrete Fourier transform, sub-pixel solutions, post-processing tools	Free toolbox for MATLAB
PTVlab <sup>i</sup>	Image pre-processing, cross-correlation, relaxation algorithm, dynamic threshold binarisation, iterative relaxation, tracking of individual trajectories, post-processing tools	Free toolbox for MATLAB
PTV-Stream <sup>j</sup>	Tracking individual trajectories and average surface flow velocity estimation	Proprietary software
RIVeR <sup>k</sup>	Image extraction from video, image processing (PIVlab or PTVlab), rectification of velocities to real-world units, discharge calculation	Free toolbox for MATLAB

<sup>a</sup> Le Coz et al. (2014); <sup>b</sup> Perks et al. (2016, 2020); <sup>c</sup> Fujita et al. (2007); <sup>d</sup> Tsubaki (2018); <sup>e</sup> Sveen and Cowen (2004); <sup>f</sup> Tauro et al. (2018b); <sup>g</sup> Leitão et al. (2018);

<sup>h</sup> Thielicke and Stamhuis (2014); <sup>i</sup> Brevis et al. (2011); <sup>j</sup> Tauro et al. (2019); <sup>k</sup> Patalano et al. (2017).

**Table A2.** Experimental setup during image acquisition, details of subsequent image pre-processing, availability of validation data, and published analysis. N/A is an abbreviation for “not available”.

Identifier	Image acquisition	Pre-processing	Validation data	Image velocimetry Software used	Published analysis
River Arrow (a)	DJI Phantom Pro 4 UAS	Conversion to greyscale intensity, orthorectification, image sequence sub-sampled	Five cross sections of 9–10 points using a Valeport ECM	Fudaa-LSPIV	N/A
River Arrow (b)	Go Pro Hero 4	As above	See River Arrow (a)	Fudaa-LSPIV	N/A
River Thalhofen	Vivotek IB836BA-HT	Orthorectification, conversion to greyscale intensity	A single RiverPro ADCP transect	Photrack. SSIV	N/A
Murg River	DJI Phantom FC40 UAS with GoPro Hero3+	Orthorectification	A single StreamPro ADCP transect	PIVlab	Detert et al. (2017)
Alpine river	DJI Mavic Pro with Hasselblad 1/2.3" CMOS sensor	None	Water surface velocities measured using an OTT C31 at 23 locations across the field of view	PIVlab	Strelnikova et al. (2020)
River Brenta (a)	GoPro Hero 4	Distortion removal, gamma correction	Velocity measurements 3 cm below water surface at four locations in a single cross section using an OTT C2	PIVlab & PTVlab	Tauro et al. (2017)
River Brenta (b)	FLIR SC500	Orthorectification, extraction of RGB from thermal	See River Brenta (a)	PTVlab	Tauro and Grimaldi (2017)

Table A2. Continued.

Identifier	Image acquisition	Pre-processing	Validation data	Image velocimetry software used	Published Analysis
La Morge	WV-CP500	Orthorectification	15 paired velocity and depth measurements performed 5 m downstream of camera and depth across two transects within camera field of view	Fudaa-LSPIV	Hauet (2016)
St. Julien torrent	Canon EOS 5D	Distortion removal, orthorectification, image stabilisation	N/A	Fudaa-LSPIV	Le Boursicaud et al. (2016)
River La Vence	Samsung Galaxy S7	Orthorectification, conversion to greyscale intensity	A single HydroProfiler M-pro ADCP transect	Photrack. SSIV	N/A
River Tiber	Mobotix S15	Distortion removal, conversion to greyscale intensity	A single RVM20 SVR measurement	PIVlab & PTVlab	Tauro et al. (2017)
River Bradano	DJI Phantom 3 Pro UAS with Sony 1/2.3" CMOS sensor	Conversion to black and white images, contrast correction	Surface velocities at seven points within a single cross section using a SEBA F1	PTVlab	Dal Sasso et al. (2018)
River Noce	DJI Phantom 3 Pro UAS with Sony 1/2.3" CMOS sensor	Contrast stretching, conversion to black and white images, image sequence sub-sampled	Surface velocities at 13 points within a single cross section using a SEBA F1	PTVlab	Dal Sasso et al. (2018)
Castor River (a)	Hikvision DS-2CD2T42WD-15 4 mm IP camera	Conversion to greyscale, orthorectified	Four StreamPro ADCP transects at a single cross section	KLT-IV	N/A
Castor River (b)	ACTI A31 IP camera	Conversion to greyscale, orthorectified	Velocity measurements at four points along a single cross section at six depths using a FlowTracker2 ADV	KLT-IV	N/A
Salmon River	DJI Phantom 4 Pro	Conversion to greyscale, stabilised, orthorectified	Velocity measurements at 24 points in a single cross section using a FlowTracker ADV	KLT-IV	N/A



**Author contributions.** This article and dataset compilation was initially proposed by SM and SG. MTP led the production of the manuscript. Each co-author contributed to the writing and the contribution of datasets.

**Competing interests.** The authors declare that they have no conflict of interest.

**Acknowledgements.** The contribution of the Murg River dataset was kindly made available by Dr Martin Detert. ADCP measurements for this case study were provided by Urs Vogel (Limnec AG). The Murg River dataset can also be accessed at : [https://figshare.com/articles/S1S2S3\\_Murg\\_20160406\\_zip/4680715/1](https://figshare.com/articles/S1S2S3_Murg_20160406_zip/4680715/1) (last access: 23 June 2020). The authors wish to thank Georgy Ayzel, two anonymous reviewers, and the handling editor for their detailed comments, which greatly improved the quality of this manuscript.

**Financial support.** This work was funded by the COST Action (European Cooperation in Science and Technology, grant no. CA16219) “HARMONIOUS–Harmonisation of UAS techniques for agricultural and natural ecosystems monitoring”. Salvatore Grimaldi and Flavia Tauro acknowledge support by Ministero degli Affari Esteri project 2015 Italy-USA (grant no. PGR00175), by POR-FESR 2014-2020 (European Regional Development Fund – Horizon 2020, grant no. 737616) INFRASAFE, and by “Departments of Excellence-2018” Program (Dipartimenti di Eccellenza) of the Italian Ministry of Education, University and Research, DIBAF-Department of University of Tuscia, Project “Landscape 4.0 – food, wellbeing and environment”.

**Review statement.** This paper was edited by Giulio G. R. Iovine and reviewed by Georgy Ayzel and two anonymous referees.

## References

- Adrian, R. J.: Scattering particle characteristics and their effect on pulsed laser measurements of fluid flow: speckle velocimetry vs particle image velocimetry, *Appl. Opt.*, 23, 1690–1691, <https://doi.org/10.1364/AO.23.001690>, 1984.
- Agisoft: Agisoft PhotoScan Professional Edition (version 1.1.6), available at: <https://www.agisoft.com> (last access: 23 June 2020), .
- Brevis, W., Niño, Y., and Jirka, G. H.: Integrating cross-correlation and relaxation algorithms for particle tracking velocimetry, *Exp. Fluids*, 50, 135–147, 2011.
- Dal Sasso, S. F., Pizarro, A., Samela, C., Mita, L., and Manfreda, S.: Exploring the optimal experimental setup for surface flow velocity measurements using PTV, *Environ. Monit. Assess.*, 190, 460, <https://doi.org/10.1007/s10661-018-6848-3>, 2018.
- Detert, M. and Weitbrecht, V.: A low-cost airborne velocimetry system: proof of concept, *J. Hydraul. Res.*, 53, 532–539, <https://doi.org/10.1080/00221686.2015.1054322>, 2015.
- Detert, M., Johnson, E. D., and Weitbrecht, V.: Proof-of-concept for low-cost and noncontact synoptic airborne river flow measurements, *Int. J. Remote Sens.*, 38, 2780–2807, <https://doi.org/10.1080/01431161.2017.1294782>, 2017.
- Dudderar, T. D. and Simpkins, P. G.: Laser speckle photography in a fluid medium, *Nature*, 270, 45–47, <https://doi.org/10.1038/270045a0>, 1977.
- Fujita, I., Muste, M., and Kruger, A.: Large-scale particle image velocimetry for flow analysis in hydraulic engineering applications, *J. Hydraul. Res.*, 36, 397–414, <https://doi.org/10.1080/00221689809498626>, 1998.
- Fujita, I., Watanabe, H., and Tsubaki, R.: Development of a non-intrusive and efficient flow monitoring technique: The space-time image velocimetry (STIV), *Int. J. River Basin Manage.*, 5, 105–114, <https://doi.org/10.1080/15715124.2007.9635310>, 2007.
- Harpold, A., Mostaghimi, S., Vlachos, P. P., Brannan, K., and Dillaha, T.: Stream discharge measurement using a large-scale particle image velocimetry (LSPIV) prototype, *Trans. ASABE*, 49, 1791–1805, 2006.
- Hauet, A.: Monitoring river flood using fixed image-based stations: Experience feedback from 3 rivers in France, in: *River Flow 2016: Iowa City, USA, 11–14 July 2016*, edited by: Constantinescu, G., Garcia, M., and Hanes, D., 541–547, CRC Press, Boca Raton, USA, available at: <https://books.google.co.uk/books?id=bIOzDAAAQBAJ> (last access: 23 June 2020), 2016.
- ISO 24578:2012: Hydrometry – Acoustic Doppler profiler – Method and application for measurement of flow in open channels, Standard, International Organization for Standardization, Geneva, CH, 2012.
- Le Boursicaud, R., Pénard, L., Hauet, A., Thollet, F., and Le Coz, J.: Gauging extreme floods on YouTube: application of LSPIV to home movies for the post-event determination of stream discharges, *Hydrol. Process.*, 30, 90–105, <https://doi.org/10.1002/hyp.10532>, 2016.
- Le Coz, J., Jodeau, M., Hauet, A., Marchand, B., and Le Boursicaud, R.: Image-based velocity and discharge measurements in field and laboratory river engineering studies using the free FUDAA-LSPIV software, *Proceedings of the International Conference on Fluvial Hydraulics, River Flow 2014, 1961–1967*, 2014.
- Leitão, J. P., Peña-Haro, S., Lüthi, B., Scheidegger, A., and de Vitry, M. M.: Urban overland runoff velocity measurement with consumer-grade surveillance cameras and surface structure image velocimetry, *J. Hydrol.*, 565, 791–804, <https://doi.org/10.1016/j.jhydrol.2018.09.001>, 2018.
- Lewis, Q. W. and Rhoads, B. L.: LSPIV Measurements of Two-Dimensional Flow Structure in Streams Using Small Unmanned Aerial Systems: 1. Accuracy Assessment Based on Comparison With Stationary Camera Platforms and In-Stream Velocity Measurements, *Water Resour. Res.*, 54, 8000–8018, 2018.
- Mishra, A. K. and Coulbaly, P.: Developments in hydrometric network design: A review, *Rev. Geophys.*, 47, RG2001, <https://doi.org/10.1029/2007RG000243>, 2009.
- Okamoto, K., Nishio, S., Saga, T., and Kobayashi, T.: Standard images for particle-image velocimetry, *Measure. Sci. Technol.*, 11, 685–691, <https://doi.org/10.1088/0957-0233/11/6/311>, 2000.
- Patalano, A., García, C. M., and Rodríguez, A.: Rectification of Image Velocity Results (RIVeR): A simple and user-friendly toolbox for large scale water surface Particle Image Velocimetry (PIV) and Particle Track-

- ing Velocimetry (PTV), *Comput. Geosci.*, 109, 323–330, <https://doi.org/10.1016/j.cageo.2017.07.009>, 2017.
- Pearce, S., Ljubičić, R., Peña-Haro, S., Perks, M., Tauro, F., Pizarro, A., Dal Sasso, S. F., Strelnikova, D., Grimaldi, S., Maddock, I., Paulus, G., Plavšić, J., Prodanović, D., and Manfreda, S.: An Evaluation of Image Velocimetry Techniques under Low Flow Conditions and High Seeding Densities Using Unmanned Aerial Systems, *Remote Sens.*, 12, 232, <https://doi.org/10.3390/rs12020232>, 2020.
- Perks, M., Dal Sasso, S., Detert, M., Hauet, A., Jamieson, E., Le Coz, J., Pearce, S., Peña-Haro, S., Pizarro, A., Strelnikova, D., Tauro, F., Bomhof, J., Grimaldi, S., Goulet, A., Hortobágyi, B., Jodeau, M., Käfer, S., Ljubičić, R., Maddock, I., Mayr, P., Paulus, G., Pénard, L., Sinclair, L., Vogel, U., and Manfreda, S.: Data on the harmonization of image velocimetry techniques, from seven different countries, 4TU.ResearchData, <https://doi.org/10.4121/uuid:014d56f7-06dd-49ad-a48c-2282ab10428e>, 2020.
- Perks, M. T., Russell, A. J., and Large, A. R. G.: Technical Note: Advances in flash flood monitoring using unmanned aerial vehicles (UAVs), *Hydrol. Earth Syst. Sci.*, 20, 4005–4015, <https://doi.org/10.5194/hess-20-4005-2016>, 2016.
- Perks, M. T.: KLT-IV v1.0: Image velocimetry software for use with fixed and mobile platforms, *Geosci. Model Dev. Discuss.*, <https://doi.org/10.5194/gmd-2020-187>, in review, 2020.
- Pickering, C. J. D. and Halliwell, N. A.: Laser speckle photography and particle image velocimetry: photographic film noise, *Appl. Opt.*, 23, 2961–2969, <https://doi.org/10.1364/AO.23.002961>, 1984.
- Pizarro, A., Dal Sasso, S. F., Perks, M., and Manfreda, S.: Spatial distribution of tracers for optical sensing of stream surface flow, *Hydrol. Earth Syst. Sci. Discuss.*, <https://doi.org/10.5194/hess-2020-188>, in review, 2020.
- Strelnikova, D., Paulus, G., Käfer, S., Anders, K.-H., Mayr, P., Mader, H., Scherling, U., and Schneeberger, R.: Drone-Based Optical Measurements of Heterogeneous Surface Velocity Fields around Fish Passages at Hydropower Dams, *Remote Sens.*, 12, 384, <https://doi.org/10.3390/rs12030384>, 2020.
- Sveen, J. K. and Cowen, E. A.: Quantitative imaging techniques and their application to wavy flows, *Adv. Coast. Ocean Eng., PIV and Water Waves*, 1–49, [https://doi.org/10.1142/9789812796615\\_0001](https://doi.org/10.1142/9789812796615_0001), 2004.
- Tauro, F. and Grimaldi, S.: Ice dices for monitoring stream surface velocity, *J. Hydro-Environ. Res.*, 14, 143–149, <https://doi.org/10.1016/j.jher.2016.09.001>, 2017.
- Tauro, F., Porfiri, M., and Grimaldi, S.: Orienting the camera and firing lasers to enhance large scale particle image velocimetry for streamflow monitoring, *Water Resour. Res.*, 50, 7470–7483, <https://doi.org/10.1002/2014WR015952>, 2014.
- Tauro, F., Petroselli, A., Porfiri, M., Giandomenico, L., Bernardi, G., Mele, F., Spina, D., and Grimaldi, S.: A novel permanent gauge-cam station for surface-flow observations on the Tiber River, *Geosci. Instrum. Method. Data Syst.*, 5, 241–251, <https://doi.org/10.5194/gi-5-241-2016>, 2016a.
- Tauro, F., Porfiri, M., and Grimaldi, S.: Surface flow measurements from drones, *J. Hydrol.*, 540, 240–245, <https://doi.org/10.1016/j.jhydrol.2016.06.012>, 2016b.
- Tauro, F., Piscopia, R., and Grimaldi, S.: Streamflow Observations From Cameras: Large-Scale Particle Image Velocimetry or Particle Tracking Velocimetry?, *Water Resour. Res.*, 53, 10374–10394, <https://doi.org/10.1002/2017WR020848>, 2017.
- Tauro, F., Selker, J., van de Giesen, N., Abrate, T., Uijlenhoet, R., Porfiri, M., Manfreda, S., Caylor, K., Moramarco, T., Benveniste, J., Ciraolo, G., Estes, L., Domeneghetti, A., Perks, M. T., Corbari, C., Rabiei, E., Ravazzani, G., Bogena, H., Harfouche, A., Brocca, L., Maltese, A., Wickert, A., Tarpanelli, A., Good, S., Alcalá, J. M. L., Petroselli, A., Cudennec, C., Blume, T., Hut, R., and Grimaldi, S.: Measurements and Observations in the XXI century (MOXXI): innovation and multi-disciplinarity to sense the hydrological cycle, *Hydrol. Sci. J.*, 63, 169–196, <https://doi.org/10.1080/02626667.2017.1420191>, 2018a.
- Tauro, F., Tosi, F., Mottocchia, S., Toth, E., Piscopia, R., and Grimaldi, S.: Optical Tracking Velocimetry (OTV): Leveraging Optical Flow and Trajectory-Based Filtering for Surface Streamflow Observations, *Remote Sens.*, 10, 24 pp., <https://doi.org/10.3390/rs10122010>, 2018b.
- Tauro, F., Piscopia, R., and Grimaldi, S.: PTV-Stream: A simplified particle tracking velocimetry framework for stream surface flow monitoring, *CATENA*, 172, 378–386, <https://doi.org/10.1016/j.catena.2018.09.009>, 2019.
- Thielicke, W. and Stamhuis, E.: PIVlab – Towards User-friendly, Affordable and Accurate Digital Particle Image Velocimetry in MATLAB, *J. Open Res. Softw.*, 2, e30, <https://doi.org/10.5334/jors.bl>, 2014.
- Tsubaki, R.: LSPIV app, available at: <https://sites.google.com/site/rtsubaki/lspiv-app> (last access: 23 June 2020), 2018.