



# An efficient RNA-seq-based segregation analysis identifies the sex chromosomes of Cannabis sativa

Djivan Prentout, Olga Razumova, Benedicte Rhone, H  l  ne Badouin, H  l  ne  
Henri, Cong Feng, Jos K  fer, Gennady Karlov, Gabriel A.B. Marais

► To cite this version:

Djivan Prentout, Olga Razumova, Benedicte Rhone, Hélène Badouin, Hélène Henri, et al.. An efficient RNA-seq-based segregation analysis identifies the sex chromosomes of *Cannabis sativa*. *Genome Research*, 2020, 30 (2), pp.164-172. 10.1101/gr.251207.119 . hal-02496865

**HAL Id: hal-02496865**

<https://hal.science/hal-02496865>

Submitted on 9 Nov 2020

**HAL** is a multi-disciplinary open access archive for the deposit and dissemination of scientific research documents, whether they are published or not. The documents may come from teaching and research institutions in France or abroad, or from public or private research centers.

L'archive ouverte pluridisciplinaire **HAL**, est destinée au dépôt et à la diffusion de documents scientifiques de niveau recherche, publiés ou non, émanant des établissements d'enseignement et de recherche français ou étrangers, des laboratoires publics ou privés.

## Research

# An efficient RNA-seq-based segregation analysis identifies the sex chromosomes of *Cannabis sativa*

Djivan Prentout,<sup>1</sup> Olga Razumova,<sup>2,3</sup> Bénédicte Rhoné,<sup>1,4</sup> Hélène Badouin,<sup>1</sup> Hélène Henri,<sup>1</sup> Cong Feng,<sup>5,6</sup> Jos Käfer,<sup>1</sup> Gennady Karlov,<sup>2</sup> and Gabriel A.B. Marais<sup>1</sup>

<sup>1</sup>Laboratoire de Biométrie et Biologie Évolutive UMR 5558, Université Lyon 1, CNRS, F-69622 Villeurbanne, France; <sup>2</sup>Laboratory of Applied Genomics and Crop Breeding, All-Russia Research Institute of Agricultural Biotechnology, Moscow 127550, Russia;

<sup>3</sup>N.V. Tsitsin Main Botanical Garden of Russian Academy of Sciences, Moscow 127276, Russia; <sup>4</sup>Institut de Recherche pour le Développement, UMR DIADE, IRD, Université de Montpellier, F-34394 Montpellier, France; <sup>5</sup>Chongqing Medical University, Yuzhong District, Chongqing, 400016, China; <sup>6</sup>BGI-Shenzhen, Beishan Industrial Zone, Yantian District, Shenzhen 518083, China

*Cannabis sativa*-derived tetrahydrocannabinol (THC) production is increasing very fast worldwide. *C. sativa* is a dioecious plant with XY Chromosomes, and only females (XX) are useful for THC production. Identifying the sex chromosome sequence would improve early sexing and better management of this crop; however, the *C. sativa* genome projects have failed to do so. Moreover, as dioecy in the Cannabaceae family is ancestral, *C. sativa* sex chromosomes are potentially old and thus very interesting to study, as little is known about old plant sex chromosomes. Here, we RNA-sequenced a *C. sativa* family (two parents and 10 male and female offspring, 576 million reads) and performed a segregation analysis for all *C. sativa* genes using the probabilistic method SEX-DETECTOR. We identified >500 sex-linked genes. Mapping of these sex-linked genes to a *C. sativa* genome assembly identified the largest chromosome pair being the sex chromosomes. We found that the X-specific region (not recombining between X and Y) is large compared to other plant systems. Further analysis of the sex-linked genes revealed that *C. sativa* has a strongly degenerated Y Chromosome and may represent the oldest plant sex chromosome system documented so far. Our study revealed that old plant sex chromosomes can have large, highly divergent nonrecombining regions, yet still be roughly homomorphic.

[Supplemental material is available for this article.]

*Cannabis sativa* is an ancient crop (Schultes et al. 1974) with two main traditional uses: marijuana and hemp (Small 2015). Marijuana, which is used in folk medicine, as a recreational drug, and lately in conventional medicine (Alexander 2016), has a narcotic effect owing to tetrahydrocannabinol (THC) and other cannabinoids produced in high concentration by some *C. sativa* cultivars. Until recently, the use of marijuana was prohibited in almost all countries, but *C. sativa*-derived products with high THC concentrations are now legal, for example, in several US states, Australia, Germany, Peru, and the UK for medicinal purposes (Offord 2018) and also in Uruguay, Canada, and several US states for recreational use (Yeager 2018). In the US, marijuana legal economy amounted to ~\$17 billion in 2016 and may reach as much as \$70 billion/year by 2021 (McVey 2017). However, legalization of marijuana is so recent that very few biotech tools have been developed for high THC-producing *C. sativa* cultivars (Yeager 2018).

THC reaches the highest concentrations in female inflorescences (bracts), so that only female *C. sativa* plants are of economic importance; furthermore, pollinated female plants produce smaller inflorescences and therefore less THC (Small 2015). It is thus important to avoid growing male plants as they are a waste of resources, labor, and space. Interest in hemp is also increasing as it is a crop for the sustainable production of fibers and oils (Andre et al. 2016; Salentijn et al. 2019). Hemp cultivars usually have a low level of THC and can be legally grown in many countries where marijuana is illegal. Features of male and female

hemp plants differ, and early sexing is also useful (Salentijn et al. 2019).

Sexual dimorphism in *C. sativa* is weak as in many dioecious plants (Barrett and Hough 2013), and sex can be determined with certainty only when the plants start flowering (Small 2015). *C. sativa* is a dioecious plant in which sex is determined by an XY Chromosome pair (Divashuk et al. 2014). So far, a few Y-linked genetic markers have been identified and are used to sex *C. sativa* seedlings (e.g., Techen et al. 2010). However, it is not known whether these markers work with all cultivars. The *C. sativa* sex chromosomes sequences would thus be an important genomic resource that could help improve agricultural yields. Currently, the *C. sativa* genome projects (van Bakel et al. 2011; Grassa et al. 2018; Laverty et al. 2019) have failed to identify the sex chromosomes, despite chromosome-level assemblies in the latest projects.

*C. sativa* is one of 15,600 dioecious species of flowering plants (Renner 2014). Dioecy and sex chromosomes have evolved multiple times in plants (Renner 2014), but very few plant systems have been studied in detail (Ming et al. 2011; Charlesworth 2015; Muyle et al. 2017). Historically, sex chromosomes have been classified using results from light microscopy (Ming et al. 2011). The terms homomorphic and heteromorphic refer to these results, with the former being roughly of similar size and the latter clearly different (but see Palmer et al. 2019 for another definition of

**Corresponding author:** [gabriel.marais@univ-lyon1.fr](mailto:gabriel.marais@univ-lyon1.fr)

Article published online before print. Article, supplemental material, and publication date are at <http://www.genome.org/cgi/doi/10.1101/gr.251207.119>.

© 2020 Prentout et al. This article is distributed exclusively by Cold Spring Harbor Laboratory Press for the first six months after the full-issue publication date (see <http://genome.cshlp.org/site/misc/terms.xhtml>). After six months, it is available under a Creative Commons License (Attribution-NonCommercial 4.0 International), as described at <http://creativecommons.org/licenses/by-nc/4.0/>.

heteromorphy). The extent to which recombination is suppressed between the sex chromosomes largely explains whether a sex chromosome pair becomes heteromorphic or not (Charlesworth et al. 2005; Bergero and Charlesworth 2009). Homomorphic XY tend to have large recombining regions and heteromorphic XY large nonrecombining ones. There is a loose correlation between the level of heteromorphy and age, but some old homomorphic systems have been described in animals and algae (e.g., Touns and Hahn 2010; Vicoso et al. 2013; Ahmed et al. 2014; Yazdi and Ellegren 2014). In plants, a model for the evolution of sex chromosomes heteromorphy with six stages has been proposed (Ming et al. 2011). In the initial stages, the sex chromosomes have small to intermediate nonrecombining regions and are homomorphic. After some time has elapsed since recombination cessation, DNA sequence and gene content can differ substantially in the nonrecombining X and Y regions, even though the sex chromosomes might be homomorphic under light microscopy (Ming et al. 2011; Wang et al. 2012; Veltsos et al. 2019). The well-studied heteromorphic systems in plants are characterized by a Y Chromosome larger than the X due to fast accumulation of repeats on the former, as in *Silene latifolia* or *Coccinia grandis* (Matsunaga et al. 1994; Sousa et al. 2013, 2016; Hobza et al. 2017), or multiple Y Chromosomes due to chromosomal fission–fusion events, as in *Rumex* species (Ming et al. 2011; Hough et al. 2014; Crowson et al. 2017). However, these sex chromosomes systems are still relatively young (less than 15 million years), and the late stages in the current model for the evolution of sex chromosomes heteromorphy in plants have not yet received attention from genomic studies. In particular, it is not clear whether the plant Y Chromosomes can shrink, as found in the ancient heteromorphic animal systems such as those of humans and some *Drosophila* species (Bachtrog 2013).

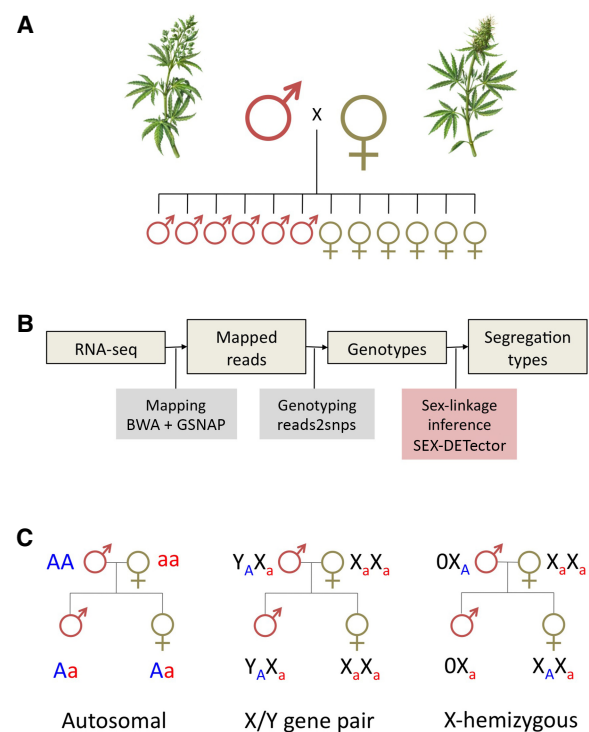
The Cannabaceae and related families (Urticaceae, Moraceae) derive from a dioecious common ancestor (Zhang et al. 2019). Despite being of similar size (Divashuk et al. 2014), the sex chromosomes of *C. sativa* could thus be much older than those of the species studied so far. Here, we used a recently developed statistical tool to identify X- and Y-linked genes, SEX-DETECTOR (Muyle et al. 2016). We applied SEX-DETECTOR to *C. sativa*, inferred sex-linked genes, and used those genes to (1) identify the sex chromosomes of *C. sativa* in an available reference genome assembly, and (2) characterize the *C. sativa* XY system and compare it to other plant systems.

## Results

### Identifying sex-linked genes in *C. sativa*

SEX-DETECTOR requires genotyping data from a cross (two parents and a few offspring individuals) (see Fig. 1). As explained in Muyle et al. (2016), patterns of allele transmission from parents to progeny differ for an autosomal or a sex-linked gene. For example, an allele only transmitted from father to sons is clearly indicative of a Y-linked allele. SEX-DETECTOR relies on a probabilistic model that accounts for typical errors in genotyping data and is used to compute, for each gene, the probability of autosomal and sex-linked segregation types. This key feature of SEX-DETECTOR makes it better at making inferences about segregation type than an empirical approach relying on data filtering to remove genotyping errors would do (better sensitivity, similar specificity).

More than 576 million 50-bp single-end reads of the parents and five male and five female offspring were mapped to the refer-



**Figure 1.** Experimental design and bioinformatic pipeline to identify sex-linked genes. (A,B) The SEX-DETECTOR analysis relies on obtaining genotyping data from a cross (parents + F1 progeny). (C) SEX-DETECTOR infers the segregation type based on how alleles are transmitted from parents to offspring. Three segregation types are included: autosomal (alleles of the parents are transmitted to the progeny the same way in both sexes, in a Mendelian way), XY (one allele of the father—the Y allele—is transmitted exclusively to sons), X-hemizygous (the single allele of the father is transmitted exclusively to daughters; the sons get one allele from the mother only). See Methods for more information. *C. sativa* male and female plants pencil illustration by annarepp/Shutterstock.com.

ence transcriptome of van Bakel et al. (2011), and all individuals were genotyped (see Methods). From these data, 11,515 genes were inferred as autosomal and 565 as sex-linked (i.e., 4.6% of the genes for which SEX-DETECTOR produced an assignment). The latter included 347 XY gene pairs and 218 X-hemizygous genes (i.e., genes lacking Y copies) (see Methods and Table 1).

### Identifying the sex chromosome pair in *C. sativa*

A total of 363 sex-linked genes (out of the 555 that we could map) mapped to Chromosome 1 in the reference genome of Grassa et al. (2018): 166 out of 340 XY gene pairs (48.8%) and 197 out of 215 X-hemizygous genes (91.6%) (Fig. 2). This indicates that Chromosome pair 1 is the sex chromosome pair. The remaining 192 sex-linked genes that could be mapped (i.e., 35% of all sex-linked genes) mapped to other chromosomes. Whether these genes are likely to be false positives or not is discussed below and in Supplemental Text S1. Note that, for the remaining analyses, we calculate statistics on all sex-linked genes as well as on the sex-linked genes from Chromosome 1 only.

Sex chromosomes typically have nonrecombining regions in which the synonymous divergence between the X and Y copies of a sex-linked gene (also called gametologs) can be substantial (Charlesworth 2015; Muyle et al. 2017). Using the sex-linked

**Table 1.** Summary of the results of the SEX-DETECTOR analysis

	Numbers
All genes <sup>a</sup>	30,074
Genes with at least one SNP detected, used for SEX-DETECTOR analysis	28,456
Genes with undetermined segregation type <sup>b</sup>	16,381
Autosomal genes	11,510
All sex-linked genes	565
XY gene pairs	347
X-hemizygous genes	218
Estimated Y gene loss rate	70%

<sup>a</sup>Transcripts from gene annotation of the reference genome (van Bakel et al. 2011).

<sup>b</sup>All posterior probabilities < 0.8, or absence of SNPs without errors.

SNPs inferred by SEX-DETECTOR, we are able to quantify the synonymous divergence ( $d_s$ ) between X and Y copies. The  $d_s$  reaches 0.4 in the two most divergent XY gene pairs (Fig. 3A); furthermore, most XY gene pairs with high X-Y  $d_s$  values mapped to a part of Chromosome 1. Two regions can be distinguished on this chromosome (Fig. 2): region 1 (from 30 to 105 Mb) where the XY gene pairs with the highest  $d_s$  values are found (mean X-Y  $d_s$  = 0.079, top 5% X-Y  $d_s$  = 0.32, top 10% X-Y  $d_s$  = 0.28) and where 58.6% of the sex-linked genes in the region are X-hemizygous, and region 2 (from 1 to 30 Mb) including mainly autosomal genes (791 genes, i.e., 96.1% of the genes in this region), in which the genes inferred as XY gene pairs show little divergence (mean X-Y  $d_s$  = 0.014, top 5% X-Y  $d_s$  = 0.05, top 10% X-Y  $d_s$  = 0.04), and few X-hemizygous genes are present (only 9.3% of the sex-linked genes). These observations suggest region 1 is the X-specific region (not recombining in males) and region 2 the pseudo-autosomal region (= PAR, still recombining in males).

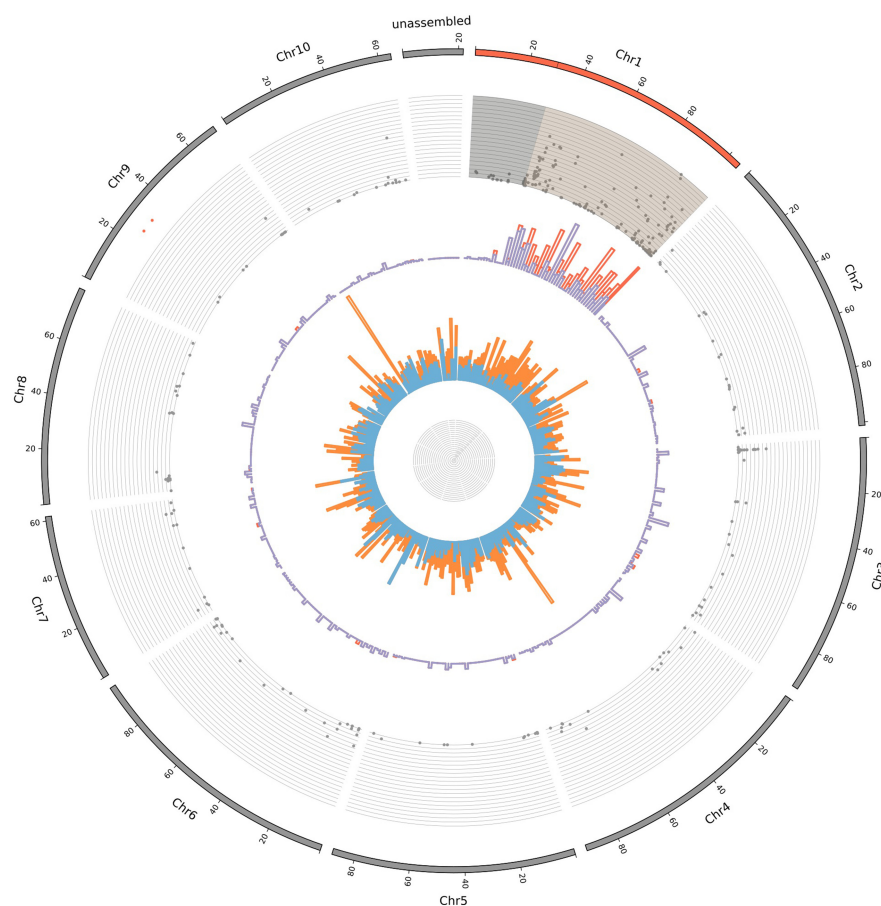
### Age of the *C. sativa* sex chromosome system

We then used the 565 sex-linked genes to study the evolution of sex chromosomes in *C. sativa*. First, we used the  $d_s$  values of the XY gametologs and different molecular clock estimates for plants to infer the age of the sex chromosomes on *C. sativa*. Using the maximum observed  $d_s$  value (0.4), we estimated that recombination suppression between X and Y Chromosomes was initiated 26.7–28.6 million years (myr) ago in *C. sativa*. If we use the  $d_s$  values of the 5% or 10% most divergent gene pairs to be more conservative when estimating the maximum X-Y divergence, we obtain more recent ages for the initial recombination suppression (17.3–20 myr old using the top 5% X-Y  $d_s$  values; 12–18.6 myr old using the top 10% X-Y  $d_s$  values) (see Table 2).

### Degeneration of the Y Chromosome and dosage compensation in *C. sativa*

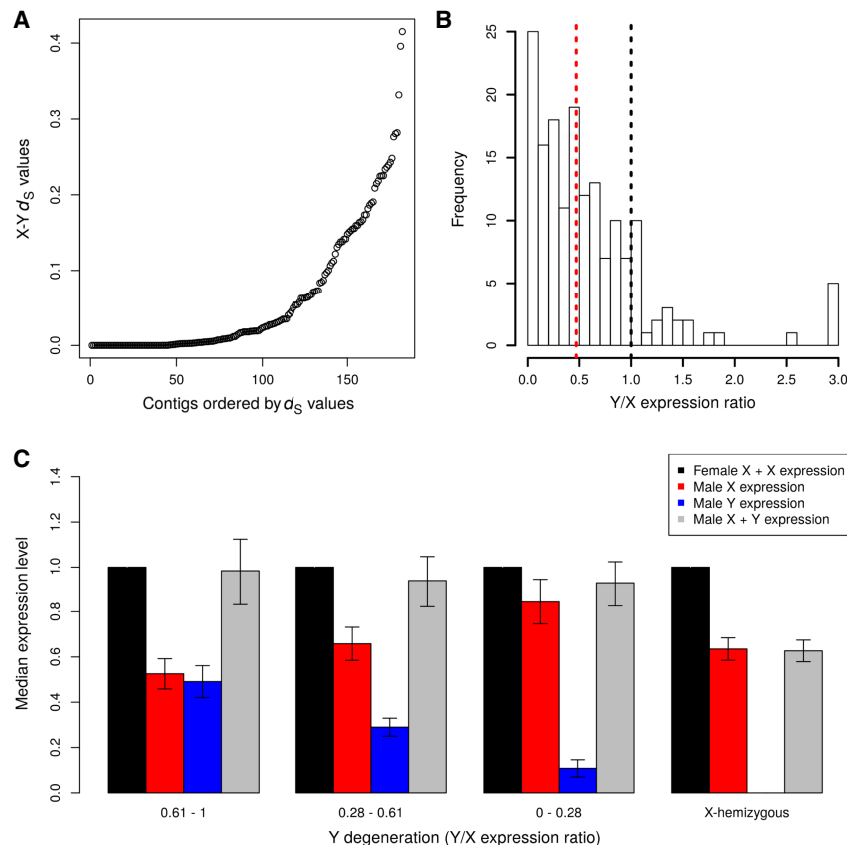
Second, we studied the extent of Y degeneration in *C. sativa* and estimated gene loss using the X-hemizygous genes. This measure of Y gene loss is, of course, a rough estimate as it reflects both true loss and simply the absence of expression of the Y copy in flower buds (Bergero and Charlesworth 2011; Bergero et al. 2015). SNP-based methods, such as ours, underestimate the number of X-hemizygous genes with respect to XY gene pairs, as X-hemizygous genes can only be detected when there is polymorphism in the X. To correct for this, we compared the number of X-hemizygous genes (218) and the XY gene pairs with polymorphism in the X copy (89), and we found that ~70% of the Y-linked genes may have been lost in *C. sativa*. The results were similar when focusing on sex-linked genes found on Chromosome 1 only (72.5%).

To further study Y degeneration, we focused on the expression of the sex-linked genes. Allele-specific expression analysis at the XY gene pairs revealed a median Y/X expression ratio of 0.50 overall (347 genes) and 0.47 for Chromosome 1 genes only (166 genes) (see Fig. 3B), much lower than the expected 1.0 value in the case of equal Y/X expression (i.e., no Y degeneration). We found some evidence for dosage compensation, as in males expression of



**Figure 2.** Distribution of the sex-linked and sex-biased genes onto the *C. sativa* reference genome. From outer to inner rings: (1) Chromosomes from 1 to 10 and unassembled scaffolds of the reference genome (Grassa et al. 2018); (2) X-Y  $d_s$  values (from 0 to 0.4); (3) proportion of XY-linked genes (in blue) and X-hemizygous genes (in red) in 2-Mb windows; (4) proportion of genes with sex-biased expression in 2-Mb windows: male-biased (light blue), female-biased (orange). *THCAS* and *CBDAS* genes found in Grassa et al. (2018) are indicated by two red dots near the outer ring.





**Figure 3.** Patterns of molecular evolution of *C. sativa* sex chromosomes. (A) X-Y  $d_S$  values for the XY gene pairs. (B) Y/X expression ratio for the XY gene pairs; the black dotted line shows the expected value for no Y degeneration, the red dotted line shows the median observed here (median = 0.47). Both are significantly different (Wilcoxon paired test  $P$ -value  $< 10^{-16}$ ). (C) Dosage compensation in *C. sativa*. The expression levels of the X and Y alleles in males and females are shown for gene categories (from left to right, categories 0.61-1 and 0.28-0.61:  $N=44$ , category 0-0.28:  $N=43$ , X-hemizygous:  $N=184$ ) with different levels of Y degeneration (measured by the Y/X expression ratio). Sex-biased genes (with strong and significant differences in male and female expression) have been removed, as they are not expected to exhibit dosage compensation (see Muyle et al. 2012, 2018). Only sex-linked genes mapping to Chromosome 1 have been included here. Supplemental Figure S1 shows the same analyses with all sex-linked genes.

X was increased when expression of Y was reduced (Fig. 3C). The results were unchanged when using all inferred sex-linked genes or only those found on Chromosome 1 (Fig. 3; Supplemental Fig. S1).

### Genomic distribution of the sex-biased genes in *C. sativa*

Of the genes expressed in flower buds, 15.7% are differentially expressed between male and female individuals (sex-biased genes) (see Table 3; Supplemental Fig. S2). The male-biased genes are significantly more numerous than the female-biased genes (9.06% vs. 6.64%, Fisher's exact test  $P$ -value  $< 10^{-16}$ ) (see Table 3), a pattern that is common in dioecious plants (Harkess et al. 2015; Zemp et al. 2016; Muyle et al. 2017; Cossard et al. 2019, but see Darolti et al. 2018; Sanderson et al. 2019). Sex-biased genes are distributed all over the *C. sativa* genome (see Fig. 2). The sex-linked genes were significantly enriched among the sex-biased genes (25.8%) compared with the autosomal genes (13.9%; Fisher's exact test  $P$ -value  $= 3.7 \times 10^{-13}$ ), again a very common pattern in dioecious plants (for review, see Muyle et al. 2017; see also Darolti et al. 2018; Sanderson et al. 2019).

## Discussion

### Chromosome pair 1 is the sex chromosome pair in *C. sativa*

Using SEX-DETECTOR, we have been able to identify a large number of sex-linked genes with a moderate sequencing effort (576 millions of single-end 50-bp reads). While most of these sex-linked genes were found to be located on Chromosome 1 of the assembly of Grassa et al. (2018), some mapped elsewhere on the reference genome. These probably include some false positives, but many are likely to result from assembly errors (see Supplemental Text S1). Nevertheless, we were able to clearly identify a chromosome pair (Chromosome 1 in the assembly of Grassa et al. 2018) as the sex chromosomes of *C. sativa*. We propose that the PAR is ~30 Mb large based on gene content and also taking into account the fact that SEX-DETECTOR tends to overestimate the size of the PAR (discussed in Muyle et al. 2016). Indeed, in a family setting, partially sex-linked pseudo-autosomal genes close to the pseudo-autosomal boundary can be inferred as fully sex-linked by SEX-DETECTOR. However, as these pseudo-autosomal genes still recombine normally, the  $d_S$  values between the X and Y alleles identified by SEX-DETECTOR should not exceed the genome-wide nucleotide polymorphism, which is around 1% in our data. Only from 30 Mb onward, the  $d_S$  values are above this value, leading us to consider the 0–30 Mb region as pseudo-autosomal. However, more data will be needed (e.g., sex-specific genetic maps) to define precisely the limit of the PAR.

### The sex chromosomes are the largest in the *C. sativa* genome

This pair is the largest pair of the *C. sativa* genome, in agreement with cytogenetic data (Divashuk et al. 2014). This is frequent in plants with heteromorphic sex chromosomes (e.g., *S. latifolia*, *C. grandis*) (for review, see Muyle et al., 2017) but also in species with homomorphic chromosomes, such as papaya, where both

**Table 2.** Estimates of the age of the *C. sativa* sex chromosome system

	Age estimate using all XY gene pairs <sup>a</sup>	Age estimate using XY gene pairs on Chr 1 <sup>a</sup>
Maximum X-Y $d_S$ value	26.7–28.6	26.7–28.6
Top 5% X-Y $d_S$ values	17.3–18.6	18.7–20
Top 10% X-Y $d_S$ values	12–13	17.3–18.6

<sup>a</sup>Estimates obtained using two different molecular clocks (see Methods).

**Table 3.** List of sex-biased genes

Gene categories	Total	Female-biased expression	Male-biased expression	P-value <sup>a</sup>
All genes with sex biased-expression <sup>b</sup>	3483	1473	2010	$<10^{-16}$
Autosomal genes <sup>c</sup>	1599	725	874	$2.1 \times 10^{-4}$
Sex-linked genes <sup>c</sup>	146	79	67	0.36
XY gene pairs <sup>c</sup>	87	34	53	0.053
X-hemizygous genes <sup>c</sup>	59	45	14	$6.5 \times 10^{-5}$

<sup>a</sup>Exact binomial test, with a theoretical mean equal to 0.5.<sup>b</sup>Among all 30074 *C. sativa* genes (see Table 1).<sup>c</sup>Autosomal, sex-linked (XY and X-hemizygous) genes inferred by SEX-DETECTOR (see Table 1).

the X and Y increased in size due to the accumulation of repeats (Gschwend et al. 2012; Wang et al. 2012). We did not observe signs of such a process in *C. sativa*, as the gene density on the X Chromosome is similar to the gene density on the autosomes (32 genes/Mb vs. 33 genes/Mb). It is thus possible that the sex chromosomes are the largest in *C. sativa* simply because the sex-determining genes happened to evolve on the largest pair of chromosomes.

### *C. sativa* sex chromosomes are relatively old

Age estimates of the *C. sativa* sex chromosomes range from ~12 myr to ~29 myr old (Table 2). This is plausible, as dioecy probably is ancestral for the whole Cannabaceae family that diversified ~80 myr ago (Zhang et al. 2019). They may be the oldest sex chromosomes in plants for which the age was inferred from sequence data (Ming et al. 2011; Charlesworth 2015; Muyle et al. 2017). For instance, sex chromosomes are ~11 myr old in *S. latifolia* (Krasovec et al. 2018) and 8–16 myr old in two dioecious *Rumex* species (Crowson et al. 2017). However, only more precise molecular clocks for these plants and age estimates in more plant systems will give a precise picture on where the *C. sativa* sex chromosomes stand in the age distribution of plant sex chromosomes.

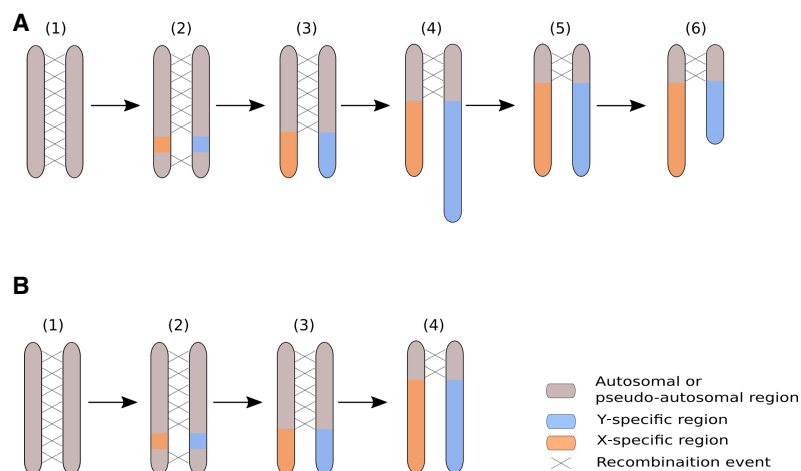
Further evidence that the *C. sativa* sex chromosomes are older than those of *S. latifolia* and *Rumex hastatulus* is the fact that the median Y/X expression ratio is ~0.5, much lower than what has been reported for the other species [~0.8 for *S. latifolia* (Bergero and Charlesworth 2011; Muyle et al. 2012) and ~0.8 for the old sex-linked genes *R. hastatulus* (Hough et al. 2014)]. Moreover, Y gene loss is about 70% in *C. sativa*, which is much higher than other species where Y gene loss has been estimated using the same methodology: ~40% for *S. latifolia* (Muyle et al. 2018; see also

Papadopoulos et al. 2015) and 30% in *R. hastatulus* (Hough et al. 2014). In *R. rothschildianus*, gene loss amounts to ~90%, but the degeneration speed, not the age of the system, is believed to explain this observation (Crowson et al. 2017). Thus, the Y Chromosome of *C. sativa* seems more strongly degenerated than the Y Chromosomes of species with strong sex chromosome heteromorphy.

### Implications for the sex chromosome evolution model in plants

Most of the plant sex chromosome systems that have been studied so far with genomic approaches either have small nonrecombining regions and homomorphic sex chromosomes (e.g., *Carica papaya*, *Asparagus officinalis*, *Diospyros lotus*) or have large nonrecombining regions and heteromorphic sex chromosomes, with the Y being larger than the X (e.g., *Silene latifolia*, *Coccinia grandis*). We here found that in a species with homomorphic sex chromosomes, the nonrecombining region is large, as it represents ~70% (75/105 Mb) of the *C. sativa* sex chromosomes (as suggested in Divashuk et al. 2014, based on cytogenetic data).

In the current scenario for the evolution of the sex chromosomes heteromorphy in plants (Ming et al. 2011; Charlesworth 2015; Muyle et al. 2017), it is unclear where these XY Chromosomes fit. Indeed, sex chromosome evolution in plants is thought to start with a small nonrecombining region on the Y Chromosome, which accumulates DNA repeats and tends to grow (Fig. 4). In papaya, the Y nonrecombining region is ~8 Mb large while the X homologous region is ~4 Mb (Wang et al. 2012). In some dioecious plants, DNA repeat accumulation in the Y nonrecombining region has been fast, and Y Chromosomes that are much larger than the X have evolved in *Silene latifolia* (Matsunaga et al. 1994) and *Coccinia grandis* (Sousa et al. 2013).



**Figure 4.** Revisiting the model for the evolution of plant sex chromosomes heteromorphy with *C. sativa*. (A) The current model for the evolution of plant sex chromosomes heteromorphy is as follows: (1) Sex chromosomes originate from autosomes on which sex-determining genes evolve; (2) the region encompassing the sex-determining genes stops recombining; (3) the non-recombining region grows larger due to additional events of recombination suppression; (4) the nonrecombining region of the Y Chromosome accumulates repeats and can become larger than the corresponding region on the X Chromosome; (5–6) the Y Chromosome undergoes large deletions and ultimately becomes smaller than the X Chromosome. Steps 1–4 have been previously documented in plants (e.g., Charlesworth et al. 2005; Ming et al. 2011; Muyle et al. 2017 for review), while steps 5–6 are speculative. Our study is supportive of this scenario if we assume that the *C. sativa* Y Chromosome has been larger in the past. (B) It is possible, however, that the accumulation of repeats has been slow in the Y Chromosome of the *C. sativa* lineage and that X and Y Chromosomes have always been of similar size. Here, step 4 does not imply the elongation of the Y Chromosome.

Either DNA repeat accumulation on the Y has been slow in the *C. sativa* lineage, or the Y used to be larger than it is today and has undergone genomic shrinking, a process that is reminiscent of the evolution of the sex chromosomes heteromorphy in animals (Ming et al. 2011; Bachtrog 2013), where old Y Chromosomes can be tiny compared to their X counterpart (Fig. 4). Distinct assemblies for the X and Y Chromosomes in *C. sativa* and also sequencing of other dioecious Cannabaceae species will help in testing this idea in the future.

## Methods

### Plant material, RNA extraction, and sequencing

One male and one female *C. sativa* plant ("Zenitsa" cultivar) were grown in controlled conditions in a greenhouse. A female was crossed with a male plant (controlled pollination). Seeds from this cross were sown to produce the F1. Flower buds (chosen because they are RNA-rich) of 3–5 d before expected flowering time (~1–3 mm) were sampled (5–7 buds per individual) from the parents and five offspring of each sex, as in Muyle et al. (2012). Total RNA was isolated from young flower buds using the RNeasy Plant Mini (Qiagen) plant isolation kit as recommended by the manufacturer. Isolated RNA was placed in RNastable tubes (Sigma-Aldrich). One library per individual was prepared. RNA-sequencing was conducted using the Complete Genomic (CG) technology, which provides 20 million ~50-bp single-end reads per sample (Liu et al. 2012). Two CG runs were done, and we obtained a mean of 48 million reads per individual (see Supplemental Table S1). Read quality was good (Phred score >35 for all reads), and no trimming was performed.

### Mapping, genotyping, and SEX-DETECTOR analysis

The SEX-DETECTOR analysis requires mapping the reads of the individuals to a reference transcriptome and performing SNP-calling to genotype all individuals for all expressed genes. Ideally, the reference transcriptome is from a female individual so that the X and Y reads map to the same transcript and XY SNPs can be identified by SEX-DETECTOR (Muyle et al. 2016). We extracted the 30,074 transcripts from the annotation of the 2011 complete genome from a Purple Kush female individual (van Bakel et al. 2011). The initial mapping analyses were done using BWA, allowing for five mismatches per read (version 0.7.15-r1140, `bwa aln -n 5` and `bwa samse`) (see Li and Durbin 2010). For comparison, an alternative mapping was performed with Bowtie 2 (version 2.1.0, `bowtie2-build` and `bowtie2 -x`) (see Langmead and Salzberg 2012), which yielded similar results. We used SAMtools (version 1.3.1, `samtools view -t output.fa -F 4 -h` and `samtools sort -m 2G`) (see Li et al. 2009) to remove unmapped reads and to prepare the files for the genotyping.

The genotyping was performed using reads2snp (version 2.0.64, `reads2snp -aeb -min 3 -par 0`) (see Gayral et al. 2013), as recommended by Muyle et al. (2016) (i.e., by accounting for allelic expression biases and without filtering for paralogous SNPs). Only SNPs supported by at least three reads were conserved for subsequent analysis (except in Supplemental Table S2).

We ran SEX-DETECTOR (`-system xy/zw/no_sex_chr -seq -detail -detail-sex-linked -L -SEM -thr 0.8`) (see Muyle et al. 2016) on genotyping data of the 12 individuals. SEX-DETECTOR uses a maximum likelihood approach to estimate the parameters of its model, which include several genotyping error parameters. The posterior probability of being autosomal ( $P_A$ ), XY ( $P_{XY}$ ), or X-hemizygous ( $P_{Xh}$ ) is computed for each SNP and for each transcript (combining the posterior probabilities of all SNPs) (see Muyle et al. 2016). A

transcript was inferred as sex-linked when its posterior probability of being either XY or X-hemizygous was  $\geq 0.8$  (i.e.,  $P_{XY} + P_{Xh} \geq 0.8$ ) and if at least one sex-linked SNP had no genotyping error; autosomal segregation was inferred similarly ( $P_A \geq 0.8$  and at least one autosomal SNP without genotyping error) (see Muyle et al. 2016). The remaining transcripts were considered undetermined and were not used for further analysis unless explicitly mentioned. To identify X-hemizygous genes among the sex-linked genes, we selected (1) the genes that have only X-hemizygous SNPs, of which at least one is without genotyping error, and (2) the genes that have no Y expression and at least one SNP without genotyping error. The second set of genes typically has mainly X-hemizygous SNPs and only a few X/Y SNPs with many Y genotyping errors. After averaging Y expression across all SNPs and individuals of these genes, Y expression is null. Only a few genes were added with step 2.

SEX-DETECTOR runs on the first mapping with BWA (and also Bowtie 2) yielded high Y genotyping error (YGE) parameter values, which could be the result of mapping errors of Y-linked reads (Muyle et al. 2016). The reference transcriptome used for mapping was derived from the genome of a female plant (van Bakel et al. 2011), which may result in a mapping bias against the Y-linked reads. To solve this problem, we used GSNAP (version 2017-11-15, `gsnap -m 5`) (see Wu and Nacu 2010), which can be used to map RNA-seq reads onto a divergent reference. GSNAP was thus used in a SNP-informed mode that adjusts read alignment onto a reference taking into account a user-provided list of SNPs that are not considered mismatches. For this procedure, we first mapped reads with BWA and collected all the SNPs present in SEX-DETECTOR's output, which were provided to GSNAP. We ran four iterations of GSNAP. For each iteration, SEX-DETECTOR detected new sex-linked SNPs, which were added to the list of SNPs provided to GSNAP. As expected, the Y genotyping error parameter value decreased from 0.84 with BWA to 0.07 with the fourth GSNAP iteration (Supplemental Table S2) and the mapping rate from 82.57% to 87% (Supplemental Table S1). All inferred sex-linked genes are available in Supplemental Table S3.

### Circular representations of location of sex-linked genes in the *C. sativa* genome

To map the sex-linked genes to the *C. sativa* genome, we used BLAST (Altschul et al. 1990) to find the best hit of each *C. sativa* transcript in the van Bakel et al. (2011) transcriptome on one of the recent reference genomes (`blastn -max_target_seqs 1 -max_hsp 1`). For this mapping, we used the *C. sativa* reference genome with the best assembly statistics (size=875 Mb, 10 pseudomolecules, 220 scaffolds, N50=91 Mb) (see <https://www.ncbi.nlm.nih.gov/genome/genomes/11681> and Grassa et al. 2018), which was, however, unannotated. We then used Circos (version 0.69-6) (Krzywinski et al. 2009) for visualizing the location of sex-linked genes. We split each chromosome in windows of 2 Mb using BEDTools `makewindows` (version v2.26.0) (Quinlan & Hall 2010). BEDTools `intersect` (version v2.26.0, `-c` option) (Quinlan & Hall 2010) was used for computing proportions of sex-linked genes per window. Proportions of sex-linked genes were computed by dividing the number of XY gene pairs (or X-hemizygous genes) by the number of all genes (sex-linked, autosomal, and undetermined) that blasted in the same window. A similar analysis was done for sex-biased genes. A comparison of the genomes of Grassa et al. (2018) and Lavery et al. (2019) is also shown in the supplemental material (Supplemental Fig. S4). Chromosome 1 in the assembly of Grassa et al. (2018) apparently corresponds to Chromosome 10 in the assembly of Lavery et al. (2019). Note, however, that the assembly of Chromosome 10 in

Laverty et al. (2019) seems to be much less complete than that of Chromosome 1 in Grassa et al. (2018): Chromosome 10 is enriched in sex-linked genes, but many sex-linked genes fall in the unassembled scaffolds.

## Analysis of the sex-linked genes

### Y gene loss

To estimate the rate of gene loss in the Y Chromosome, we compared the number of XY gene pairs and the number of X-hemizygous genes, as in Bergero and Charlesworth (2011). Identifying XY gene pairs relies on fixed XY differences, while identifying X-hemizygous genes relies on X-polymorphism only, which makes detection of X-hemizygous genes less likely (see Bergero and Charlesworth 2011; Muyle et al. 2016). The Y gene loss proportion estimate was thus corrected for this bias as follows:

$$Y \text{ gene loss} = \frac{\text{X-hemizygous gene number}}{(\text{X-hemizygous gene number} + \text{XY gene pair with X polymorphism number})}$$

### Values of synonymous divergence ( $d_s$ ) and age of the XY system

The X and Y open reading frame sequences were aligned using the translated reference transcripts to get reading-frame informed alignments. X-Y  $d_s$  values were obtained using codeml (PAML version 4.9) (see Yang 2007) in pairwise mode. To estimate the age of the *C. sativa* XY system, we considered maximum X-Y  $d_s$  values and used two different molecular clocks for plants:  $1.5 \times 10^{-8}$  substitutions/site/year (Koch et al. 2000) and  $7 \times 10^{-9}$  mutations/site/generation (Ossowski et al. 2010). We obtained the age of the XY system as follows:

$$\text{age (in years)} = \frac{d_{s\max}}{\text{rate}},$$

using the molecular clock of Koch et al. (2000), and

$$\text{age (in number of generations)} = \frac{d_{s\max}}{2\mu},$$

using the molecular clock of Ossowski et al. (2010).

The age in million years from the Ossowski et al. (2010) molecular clock was obtained assuming one generation per year in natural populations of *C. sativa* (which is a tall annual plant).

### Allele-specific expression analyses

We used allele-specific expression estimates at XY gene pairs provided by SEX-DETECTOR (Muyle et al. 2016) for the estimation of the Y/X expression ratio and patterns of dosage compensation (see Fig. 3B–C). These estimates relied on counting reads spanning XY SNPs only and were normalized using the total read number in a library for each individual. These estimates were further normalized by the median autosomal expression for each individual.

### Identifying sex-biased genes

As the differential gene expression analysis methods currently available vary in performance (Schurch et al. 2016; Costa-Silva et al. 2017), we chose to combine several methods. Analyses contrasting the gene expression level between our 12 male and female individuals were thus performed using three R packages: (1) DESeq2 version 1.10.1 (Love et al. 2014); (2) edgeR version 3.26.9 (Robinson et al. 2010), both relying on negative binomial distribution of read count modeling; and (3) *limma*-voom version

3.26.9 (Ritchie et al. 2015), based on log-normal distribution modeling to take into account the sampling variance of small read counts. Very lowly expressed genes were discarded from the analysis, keeping only genes covered by at least 10 reads in a minimum of two replicates. Using a FDR-adjusted *P*-value cut-off of 0.0001, we retained as sex-biased the genes that had significant differences in expression between males and females in at least two of the three methods (Supplemental Fig. S3).

### Statistics

All statistical tests and figures were done using R version 3.2.3 (R Core Team 2016).

### Data access

All RNA-seq data for the *C. sativa* samples generated in this study have been submitted to the NCBI BioProject database (<https://www.ncbi.nlm.nih.gov/bioproject/>) under accession number PRJNA549804.

### Competing interest statement

The authors declare no competing interests.

### Acknowledgments

We thank the BGI for free sequencing, thanks to their call for RNA-seq for medicinal plants. We thank Aline Muyle for advice with SEX-DETECTOR and discussions. We thank Dr. Tatyana Sukhorada, P. P. Lukyanenko Krasnodar Research and Development Institute of Agriculture for providing seeds of the *C. sativa* cultivar “Zenitsa.” We thank three anonymous referees and the editor for their useful comments that helped improve this manuscript. This work was performed using the computing facilities of the CC LBBE/PRABI; we thank Bruno Spataro and Stéphane Delmotte for cluster maintenance. This project was supported through Agence Nationale de la Recherche (ANR) grant ANR-14-CE19-0021-01 to G.A.B.M.

**Author contributions:** Conceptualization of the study: G.A.B.M. and G.K.; methodology: G.A.B.M. and G.K.; software: D.P., B.R., and H.B.; formal analysis: D.P.; investigation: D.P., O.R., B.R., H.B., H.H., J.K., G.K., and G.A.B.M.; resources: O.R., C.F., and G.K.; data curation: C.F.; writing—original draft: G.A.B.M., D.P., and J.K.; writing—review and editing: all authors; visualization: D.P.; supervision: G.A.B.M., J.K., and G.K.; project administration: G.A.B.M.; funding acquisition: G.A.B.M. and G.K.

### References

- Ahmed S, Cock JM, Pessia E, Luthringer R, Cormier A, Robuchon M, Sterck L, Peters AF, Dittami SM, Corre E, et al. 2014. A haploid system of sex determination in the brown alga *Ectocarpus* sp. *Curr Biol* **24**: 1945–1957. doi:10.1016/j.cub.2014.07.042
- Alexander SP. 2016. Therapeutic potential of cannabis-related drugs. *Prog Neuropsychopharmacol Biol Psychiatry* **64**: 157–166. doi:10.1016/j.pnpbp.2015.07.001
- Altschul SF, Gish W, Miller W, Myers EW, Lipman DJ. 1990. Basic local alignment search tool. *J Mol Biol* **215**: 403–410. doi:10.1016/S0022-2836(05)80360-2
- Andre CM, Hausman JF, Guerriero G. 2016. *Cannabis sativa*: the plant of the thousand and one molecules. *Front Plant Sci* **7**: 19. doi:10.3389/fpls.2016.00019
- Bachtrog D. 2013. Y-chromosome evolution: emerging insights into processes of Y-chromosome degeneration. *Nat Rev Genet* **14**: 113–124. doi:10.1038/nrg3366
- Barrett SC, Hough J. 2013. Sexual dimorphism in flowering plants. *J Exp Bot* **64**: 67–82. doi:10.1093/jxb/ers308



- Bergero R, Charlesworth D. 2009. The evolution of restricted recombination in sex chromosomes. *Trends Ecol Evol* **24**: 94–102. doi:10.1016/j.tree.2008.09.010
- Bergero R, Charlesworth D. 2011. Preservation of the Y transcriptome in a 10-million-year-old plant sex chromosome system. *Curr Biol* **21**: 1470–1474. doi:10.1016/j.cub.2011.07.032
- Bergero R, Qiu S, Charlesworth D. 2015. Gene loss from a plant sex chromosome system. *Curr Biol* **25**: 1234–1240. doi:10.1016/j.cub.2015.03.015
- Charlesworth D. 2015. Plant contributions to our understanding of sex chromosome evolution. *New Phytol* **208**: 52–65. doi:10.1111/nph.13497
- Charlesworth D, Charlesworth B, Marais G. 2005. Steps in the evolution of heteromorphic sex chromosomes. *Heredity (Edinb)* **95**: 118–128. doi:10.1038/sj.hdy.6800697
- Cossard GG, Toups MA, Pannell JR. 2019. Sexual dimorphism and rapid turnover in gene expression in pre-reproductive seedlings of a dioecious herb. *Ann Bot* **123**: 1119–1131. doi:10.1093/aob/mcy183
- Costa-Silva J, Domingues D, Lopes FM. 2017. RNA-Seq differential expression analysis: an extended review and a software tool. *PLoS One* **12**: e0190152. doi:10.1371/journal.pone.0190152
- Crowson D, Barrett SCH, Wright SI. 2017. Purifying and positive selection influence patterns of gene loss and gene expression in the evolution of a plant sex chromosome system. *Mol Biol Evol* **34**: 1140–1154. doi:10.1093/molbev/msx064
- Darolti I, Wright AE, Pucholt P, Berlin S, Mank JE. 2018. Slow evolution of sex-biased genes in the reproductive tissue of the dioecious plant *Salix viminalis*. *Mol Ecol* **27**: 694–708. doi:10.1111/mec.14466
- Divashuk MG, Alexandrov OS, Razumova OV, Kirov IV, Karlov GI. 2014. Molecular cytogenetic characterization of the dioecious *Cannabis sativa* with an XY chromosome sex determination system. *PLoS One* **9**: e85118. doi:10.1371/journal.pone.0085118
- Gayral P, Melo-Ferreira J, Glémin S, Bierre N, Carneiro M, Nabholz B, Lourenco JM, Alves PC, Ballenghien M, Faivre N, et al. 2013. Reference-free population genomics from next-generation transcriptome data and the vertebrate-invertebrate gap. *PLoS Genet* **9**: e1003457. doi:10.1371/journal.pgen.1003457
- Grassa CJ, Wenger JP, Dabney C, Poplawski SG, Motley ST, Michael TP, Schwartz C, Weiblen GD. 2018. A complete *Cannabis* chromosome assembly and adaptive admixture for elevated cannabidiol (CBD) content. bioRxiv doi:10.1101/458083
- Gschwend AR, Yu Q, Tong EJ, Zeng F, Han J, VanBuren R, Aryal R, Charlesworth D, Moore PH, Paterson AH, et al. 2012. Rapid divergence and expansion of the X chromosome in papaya. *Proc Natl Acad Sci* **109**: 13716–13721. doi:10.1073/pnas.1121096109
- Harkess A, Mercati F, Shan HY, Sunseri F, Falavigna A, Leebens-Mack J. 2015. Sex-biased gene expression in dioecious garden asparagus (*Asparagus officinalis*). *New Phytol* **207**: 883–892. doi:10.1111/nph.13389
- Hobza R, Cegan R, Jesionek W, Kejnovsky E, Vyskot B, Kubat Z. 2017. Impact of repetitive elements on the Y chromosome formation in plants. *Genes (Basel)* **8**: 302. doi:10.3390/genes8110302
- Hough J, Hollister JD, Wang W, Barrett SC, Wright SI. 2014. Genetic degeneration of old and young Y chromosomes in the flowering plant *Rumex hastatulus*. *Proc Natl Acad Sci* **111**: 7713–7718. doi:10.1073/pnas.1319227111
- Koch M, Haubold B, Mitchell-Olds T. 2000. Comparative evolutionary analysis of chalcone synthase and alcohol dehydrogenase loci in *Arabidopsis*, *Arabis* and related genera (Brassicaceae). *Mol Biol Evol* **17**: 1483–1498. doi:10.1093/oxfordjournals.molbev.a026248
- Krasovec M, Chester M, Ridout K, Filatov DA. 2018. The mutation rate and the age of the sex chromosomes in *Silene latifolia*. *Curr Biol* **28**: 1832–1838.e4. doi:10.1016/j.cub.2018.04.069
- Krzywinski M, Schein J, Birol I, Connors J, Gascoyne R, Horsman D, Jones SJ, Marra MA. 2009. Circos: an information aesthetic for comparative genomics. *Genome Res* **19**: 1639–1645. doi:10.1101/gr.092759.109
- Langmead B, Salzberg SL. 2012. Fast gapped-read alignment with Bowtie 2. *Nat Methods* **9**: 357–359. doi:10.1038/nmeth.1923
- Laverty KU, Stout JM, Sullivan MJ, Shah H, Gill N, Holbrook L, Deikus G, Sebra R, Hughes TR, Page JE, et al. 2019. A physical and genetic map of *Cannabis sativa* identifies extensive rearrangements at the *THC/CBD acid synthase* loci. *Genome Res* **29**: 146–156. doi:10.1101/gr.242594.118
- Li H, Durbin R. 2010. Fast and accurate long-read alignment with Burrows–Wheeler transform. *Bioinformatics* **26**: 589–595. doi:10.1093/bioinformatics/btp698
- Li H, Handsaker B, Wysoker A, Fennell T, Ruan J, Homer N, Marth G, Abecasis G, Durbin R; 1000 Genome Project Data Processing Subgroup. 2009. The Sequence Alignment/Map format and SAMtools. *Bioinformatics* **25**: 2078–2079. doi:10.1093/bioinformatics/btp352
- Liu L, Li Y, Li S, Hu N, He Y, Pong R, Lin D, Lu L, Law M. 2012. Comparison of next-generation sequencing systems. *Biomed Res Int* **2012**: 251364. doi:10.1155/2012/251364
- Love MI, Huber W, Anders S. 2014. Moderated estimation of fold change and dispersion for RNA-seq data with DESeq2. *Genome Biol* **15**: 550. doi:10.1186/s13059-014-0550-8
- Matsunaga S, Hizume M, Kawano S, Kuroiwa T. 1994. Cytological analyses in *Melandrium album*: genome size, chromosome size and fluorescence *in situ* hybridization. *Cytologia (Tokyo)* **59**: 135–141. doi:10.1508/cytologia.59.135
- McVey E. 2017. U.S. marijuana industry's economic impact to approach \$70B by 2021. In *Marijuana Business Daily*. Published June 12, 2017. <https://mjbizdaily.com/chart-u-s-marijuana-industrys-economic-impact-approach-70b-2021/>
- Ming R, Bendahmane A, Renner SS. 2011. Sex chromosomes in land plants. *Annu Rev Plant Biol* **62**: 485–514. doi:10.1146/annurev-arplant-042110-103914
- Muyle A, Zemp N, Deschamps C, Mousset S, Widmer A, Marais GA. 2012. Rapid de novo evolution of X chromosome dosage compensation in *Silene latifolia*, a plant with young sex chromosomes. *PLoS Biol* **10**: e1001308. doi:10.1371/journal.pbio.1001308
- Muyle A, Käfer J, Zemp N, Mousset S, Picard F, Marais GA. 2016. SEX-DETECTOR: a probabilistic approach to study sex chromosomes in non-model organisms. *Genome Biol Evol* **8**: 2530–2543. doi:10.1093/gbe/evw172
- Muyle A, Shearn R, Marais GA. 2017. The evolution of sex chromosomes and dosage compensation in plants. *Genome Biol Evol* **9**: 627–645. doi:10.1093/gbe/evw282
- Muyle A, Zemp N, Fruchard C, Cegan R, Vrana J, Deschamps C, Tavares R, Hobza R, Picard F, Widmer A, et al. 2018. Genomic imprinting mediates dosage compensation in a young plant XY system. *Nat Plants* **4**: 677–680. doi:10.1038/s41477-018-0221-y
- Offord C. 2018. UK to legalize medicinal *Cannabis*. In *The Scientist*. Published July 27, 2018. <https://www.the-scientist.com/news-opinion/uk-to-legalize-medicinal-cannabis-64574>
- Ossowski S, Schneeberger K, Lucas-Lledo JJ, Warthmann N, Clark RM, Shaw RG, Weigel D, Lynch M. 2010. The rate and molecular spectrum of spontaneous mutations in *Arabidopsis thaliana*. *Science* **327**: 92–94. doi:10.1126/science.1180677
- Palmer DH, Rogers TF, Dean R, Wright AE. 2019. How to identify sex chromosomes and their turnover. *Mol Ecol* **28**: 4709–4724. doi:10.1111/mec.15245
- Papadopoulos AS, Chester M, Ridout K, Filatov DA. 2015. Rapid Y degeneration and dosage compensation in plant sex chromosomes. *Proc Natl Acad Sci* **112**: 13021–13026. doi:10.1073/pnas.1508454112
- Quinlan AR, Hall IM. 2010. BEDTools: a flexible suite of utilities for comparing genomic features. *Bioinformatics* **26**: 841–842. doi:10.1093/bioinformatics/btq033
- R Core Team. 2016. *R: a language and environment for statistical computing*. R Foundation for Statistical Computing, Vienna. <http://www.R-project.org/>
- Renner SS. 2014. The relative and absolute frequencies of angiosperm sexual systems: dioecy, monoecy, gynodioecy, and an updated online database. *Am J Bot* **101**: 1588–1596. doi:10.3732/ajb.1400196
- Ritchie ME, Phipson B, Wu D, Hu Y, Law CW, Shi W, Smyth GK. 2015. *limma* powers differential expression analyses for RNA-sequencing and microarray studies. *Nucleic Acids Res* **43**: e47. doi:10.1093/nar/gkv007
- Robinson MD, McCarthy DJ, Smyth GK. 2010. edgeR: a Bioconductor package for differential expression analysis of digital gene expression data. *Bioinformatics* **26**: 139–140. doi:10.1093/bioinformatics/btp616
- Salentijn EM, Petit J, Trindade LM. 2019. The complex interactions between flowering behavior and fiber quality in hemp. *Front Plant Sci* **10**: 10.3389/fpls.2019.00614
- Sanderson BJ, Wang L, Tiffin P, Wu Z, Olson MS. 2019. Sex-biased gene expression in flowers, but not leaves, reveals secondary sexual dimorphism in *Populus balsamifera*. *New Phytol* **221**: 527–539. doi:10.1111/nph.15421
- Schultes RE, Klein WM, Plowman T, Lockwood TE. 1974. *Cannabis*: an example of taxonomic neglect. *Bot Mus Leaf Harv Univ* **23**: 337–367. doi:10.1515/9783110812060.21
- Schurch NJ, Schofield P, Gierliński M, Cole C, Sherstnev A, Singh V, Wrobel N, Gharbi K, Simpson GG, Owen-Hughes T, et al. 2016. How many biological replicates are needed in an RNA-seq experiment and which differential expression tool should you use? *RNA* **22**: 839–851. doi:10.1261/rna.053959.115
- Small E. 2015. Evolution and classification of *Cannabis sativa* (marijuana, hemp) in relation to human utilization. *Bot Rev* **81**: 189–294. doi:10.1007/s12229-015-9157-3
- Sousa A, Fuchs J, Renner SS. 2013. Molecular cytogenetics (FISH, GISH) of *Coccinia grandis*: a ca. 3 myr-old species of Cucurbitaceae with the largest Y-autosome divergence in flowering plants. *Cytogenet Genome Res* **139**: 107–118. doi:10.1159/000345370

- Sousa A, Bellot S, Fuchs J, Houben A, Renner SS. 2016. Analysis of transposable elements and organellar DNA in male and female genomes of a species with a huge Y chromosome reveals distinct Y centromeres. *Plant J* **88**: 387–396. doi:10.1111/tpj.13254
- Techen N, Chandra S, Lata H, Elsohly MA, Khan IA. 2010. Genetic identification of female *Cannabis sativa* plants at early developmental stage. *Planta Med* **76**: 1938–1939. doi:10.1055/s-0030-1249978
- Toups MA, Hahn MW. 2010. Retrogenes reveal the direction of sex-chromosome evolution in mosquitoes. *Genetics* **186**: 763–766. doi:10.1534/genetics.110.118794
- van Bakel H, Stout JM, Cote AG, Tallon CM, Sharpe AG, Hughes TR, Page JE. 2011. The draft genome and transcriptome of *Cannabis sativa*. *Genome Biol* **12**: R102. doi:10.1186/gb-2011-12-10-r102
- Veltsos P, Ridout KE, Toups MA, González-Martínez SC, Muyle A, Emery O, Rastas P, Hudzieczek V, Hobza R, Vyskot B, et al. 2019. Early sex-chromosome evolution in the diploid dioecious plant *Mercurialis annua*. *Genetics* **212**: 815–835. doi:10.1534/genetics.119.302045
- Vicoso B, Kaiser VB, Bachtrog D. 2013. Sex-biased gene expression at homomorphic sex chromosomes in emus and its implication for sex chromosome evolution. *Proc Natl Acad Sci* **110**: 6453–6458. doi:10.1073/pnas.1217027110
- Wang J, Na JK, Yu Q, Gschwend AR, Han J, Zeng F, Aryal R, VanBuren R, Murray JE, Zhang W, et al. 2012. Sequencing papaya X and Y<sup>h</sup> chromosomes reveals molecular basis of incipient sex chromosome evolution. *Proc Natl Acad Sci* **109**: 13710–13715. doi:10.1073/pnas.1207833109
- Wu TD, Nacu S. 2010. Fast and SNP-tolerant detection of complex variants and splicing in short reads. *Bioinformatics* **26**: 873–881. doi:10.1093/bioinformatics/btq057
- Yang Z. 2007. PAML 4: Phylogenetic Analysis by Maximum Likelihood. *Mol Biol Evol* **24**: 1586–1591. doi:10.1093/molbev/msm088
- Yazdi HP, Ellegren H. 2014. Old but not (so) degenerated—slow evolution of largely homomorphic sex chromosomes in ratites. *Mol Biol Evol* **31**: 1444–1453. doi:10.1093/molbev/msu101
- Yeager A. 2018. Canada could come to the fore in *Cannabis* research. In *The Scientist*. Published July 6, 2018. <https://www.the-scientist.com/news-opinion/canada-could-come-to-the-fore-in-cannabis-research-64455>
- Zemp N, Tavares R, Muyle A, Charlesworth D, Marais GA, Widmer A. 2016. Evolution of sex-biased gene expression in a dioecious plant. *Nat Plants* **2**: 16168. doi:10.1038/nplants.2016.168
- Zhang Q, Onstein RE, Little SA, Sauquet H. 2019. Estimating divergence times and ancestral breeding systems in *Ficus* and *Moraceae*. *Ann Bot* **123**: 191–204. doi:10.1093/aob/mcy159

Received July 31, 2019; accepted in revised form January 24, 2020.



## An efficient RNA-seq-based segregation analysis identifies the sex chromosomes of *Cannabis sativa*

Djivan Prentout, Olga Razumova, Bénédicte Rhoné, et al.

*Genome Res.* 2020 30: 164-172 originally published online February 7, 2020

Access the most recent version at doi:[10.1101/gr.251207.119](https://doi.org/10.1101/gr.251207.119)

---

**Supplemental Material** <http://genome.cshlp.org/content/suppl/2020/02/05/gr.251207.119.DC1>

**References** This article cites 62 articles, 13 of which can be accessed free at:  
<http://genome.cshlp.org/content/30/2/164.full.html#ref-list-1>

**Creative Commons License** This article is distributed exclusively by Cold Spring Harbor Laboratory Press for the first six months after the full-issue publication date (see <http://genome.cshlp.org/site/misc/terms.xhtml>). After six months, it is available under a Creative Commons License (Attribution-NonCommercial 4.0 International), as described at <http://creativecommons.org/licenses/by-nc/4.0/>.

**Email Alerting Service** Receive free email alerts when new articles cite this article - sign up in the box at the top right corner of the article or [click here](#).

---

**ThruPLEX<sup>®</sup> HV**  
failproof DNA-seq of FFPE & cfDNA



Takara  
Clontech Wako cellartis

---

To subscribe to *Genome Research* go to:  
<http://genome.cshlp.org/subscriptions>

---