



Dynamic Succession of Microbiota during Ensiling of Whole Plant Corn Following Inoculation with *Lactobacillus buchneri* and *Lactobacillus hilgardii* Alone or in Combination

Pascal Drouin, Julien Tremblay, Frédérique Chaucheyras-Durand

► To cite this version:

Pascal Drouin, Julien Tremblay, Frédérique Chaucheyras-Durand. Dynamic Succession of Microbiota during Ensiling of Whole Plant Corn Following Inoculation with *Lactobacillus buchneri* and *Lactobacillus hilgardii* Alone or in Combination. *Microorganisms*, 2019, 7 (12), pp.595. 10.3390/microorganisms7120595 . hal-02375686

HAL Id: hal-02375686

<https://hal.science/hal-02375686>

Submitted on 22 Nov 2019

HAL is a multi-disciplinary open access archive for the deposit and dissemination of scientific research documents, whether they are published or not. The documents may come from teaching and research institutions in France or abroad, or from public or private research centers.

L'archive ouverte pluridisciplinaire **HAL**, est destinée au dépôt et à la diffusion de documents scientifiques de niveau recherche, publiés ou non, émanant des établissements d'enseignement et de recherche français ou étrangers, des laboratoires publics ou privés.



Distributed under a Creative Commons Attribution 4.0 International License



Article

Dynamic Succession of Microbiota during Ensiling of Whole Plant Corn Following Inoculation with *Lactobacillus buchneri* and *Lactobacillus hilgardii* Alone or in Combination

Pascal Drouin ^{1,*}, Julien Tremblay ² and Frédérique Chaucheyras-Durand ^{3,4}

¹ Lallemand Specialties Inc., Milwaukee, WI 53218, USA

² Energy, Mining and Environment Research Centre, National Research Council of Canada, Montréal, QC H4P 2R2, Canada; julien.tremblay@nrc-nrc.gc.ca

³ Lallemand SAS, 19 rue des Briquetiers, 31702 Blagnac CEDEX, France; fchaucheyrasdurand@lallemand.com

⁴ Unité Mixte de Recherche 454 Microbiologie Environnement Digestif et Santé, Institut National de la Recherche Agronomique, Université Clermont Auvergne, 63000 Clermont-Ferrand, France

* Correspondence: pdrouin@lallemand.com; Tel.: +1-518-538-2165

Received: 7 October 2019; Accepted: 19 November 2019; Published: 21 November 2019

Abstract: Lactic acid bacteria (LAB) used as silage additives have been shown to improve several fermentation parameters, including aerobic stability. Inoculation with a combination of *Lactobacillus buchneri* NCIMB40788 and *Lactobacillus hilgardii* CNCM-I-4785, contributes to an increase in aerobic stability, compared to each strain inoculated independently. To understand the mode of action of the combination on the LAB community, a fermentation-kinetic study was performed on corn. Four treatments, Control, *Lb. buchneri*, *Lb. hilgardii*, and a combination of the two strains, were fermented 1, 2, 4, 8, 16, 32, and 64 days. Corn silage inoculated by both strains had a lactate:acetate ratio of 0.59 after 64 days and a higher concentration of lactate than *Lb. buchneri*. Analysis of the microbiota by 16S and ITS amplicon metasequencing demonstrated that inoculation led to lower bacterial diversity after 1 day, from 129.4 down to 40.7 observed operational taxonomic units (OTUs). *Leuconostocaceae* represented the dominant population by day 1, with 48.1%. *Lactobacillaceae* dominated the succession by day 4, with 21.9%. After 32 days, inoculation by both strains had the lowest bacterial alpha diversity level, with 29.0 observed OTUs, compared to 61.3 for the Control. These results confirm the increased fermentation efficiency when the two *Lactobacillus* strains are co-inoculated, which also led to a specific yeast OTUs diversity profile, with *Hannaella* as the main OTU.

Keywords: silage; inoculant; lactic acid bacteria; microbial diversity; corn

1. Introduction

Inoculation of silage, one of the main feed ingredients of dairy and beef cattle, has not only been credited with improving the quality of the preserved crops, but also with promoting several other benefits, including increasing animal performance [1], N and protein availability [2], reducing methane emissions [3], and adsorption of certain mycotoxins [4]. A recent meta-analysis of the impacts of homofermentative and facultative heterofermentative lactic acid bacteria (LAB) inoculants [5] confirmed these results and proposed some limitations and benefits to be gained by inoculation.

The succession of populations of lactic acid bacteria at the different phases of ensiling is a dynamic process that varies throughout the fermentation period, and high throughput sequencing

technologies provide useful information on microbial shifts. Lin et al. [6] characterized more than 3400 bacterial isolates in a study using alfalfa and corn crops and the corresponding silage. Of those colonies, 306 were classified as homofermentative lactic acid bacteria (LAB). In corn, LAB succession was mainly dominated by *Lb. plantarum*, followed with *Ped. pentosaceus* [6]. These results provided a first glimpse into microbial population dynamics, but were limited by phylogenic identification of the different strains. Strains belonging to the genus *Streptococcus*, *Lactococcus*, and *Leuconostoc* were also identified in silage [7]. More recently, Brusetti et al. [8] studied the microbial succession of corn silage using the length heterogeneity PCR technique. After 1, 2, 6, 13, 20, and 30 days of fermentation, they observed a population shift from *Pediococcus* and *Weissella* on the first days of fermentation to *Enterobacter* as the dominant species after 30 days.

Inoculation of the forage with LAB at ensiling generally improves the overall quality of silage following their capacity to ferment soluble sugars to lactic acid along the homofermentative pathway, or to acetic acid and ethanol using heterofermentative pathways. Other molecules, including 1,2-propanediol are synthesized by certain species, the obligate heterofermentative *Lactobacillus buchneri* for example, and they improve aerobic stability [9]. Eikmeyer et al. [10] observed to what extent the inoculation of grass silage modified the LAB population after 14 and 58 days of fermentation. Without LAB inoculation, three genera, *Lactobacillus*, *Lactococcus*, and *Weissella*, dominated the silage. Inoculation with *Lb. buchneri* increased the size of the *Lactobacillus* genus in the treated samples after 58 days of storage.

Ensiling trials using *Lactobacillus hilgardii*, an obligate heterofermentative bacterium isolated from sugar cane and belonging to the same taxonomic group as *Lb. buchneri*, were recently published [11,12]. Some strains were not only effective in increasing the fermentation and aerobic stability of sugar cane, but also in improving the feed intake and milk yield of dairy cows [13,14]. Commercial microbial silage additive formulations often combined different strains of LAB with contrasting functions, for example a fast fermenting strain and one with increasing aerobic stability, but few microbial diversity studies have tried to understand the successional patterns following inoculation with multiple strains.

The objective of this study was thus to investigate microbial succession during the ensiling process by performing a kinetic analysis of whole-plant corn silage with up to 64 days of incubation in controlled conditions. Our second objective was to understand how whole plant corn inoculated with one of two obligate heterofermentative LAB strains, or a combination of the two, influences microbial succession patterns, determined by metasequencing of 16S rDNA and ITS (internal transcribed spacer) amplicon and analyzing their corresponding fermentation profiles using analytic chemistry.

2. Materials and Methods

2.1. Ensiling and Experimental Treatments

Whole-plant corn forage (*Zea mays* L. cultivar P1498HR) fertilized with 2 metric tons per ha of manure, 18 kg per ha of 10-20-20 starter fertilizer applied prior to planting, and 14 kg per ha of nitrogen during the growing season, was harvested on 2 October 2015 at the kernel half milk line and at a mean dry matter content of 352.0 g DM·kg⁻¹ (*pF* = 0.507). No fungicides were used on the corn. The maximum temperature on the two days prior to harvesting was 14 and 13 °C, and the minimum was 4 °C. The self-propelled forage harvester (John Deere 8800) was set to chop at a theoretical length of 12.7 mm and was equipped with a KernelStar processor unit (John Deere). At harvesting, Acid Detergent Fiber (ADF) was at 21.2, Neutral Detergent Fiber (NDF) was at 36.6, ethanol-soluble carbohydrates were at 1.8, and crude proteins were at 6.1 % DM. After coarse mixing, the chopped corn was divided into four 30 kg piles prior to application of the treatments by alternatively spraying small volumes of inoculant and mixing, and was completed by mixing thoroughly. Initial counts of lactic acid bacteria performed on De Man, Rogosa, Sharpe (MRS) plates supplemented with cycloheximide (100 µg·L⁻¹) was of 5.81 log₁₀ CFU·g⁻¹ fresh forage (ff). The treatments consisted of well water (Control), *Lactobacillus buchneri* NCIMB 40788 (LB) (4 × 10⁵ CFU·g⁻¹ fresh forage), *Lactobacillus*

hilgardii CNCM-I-4785 (LH) (4×10^5 CFU·g⁻¹ fresh forage, and a combination of the two *Lactobacillus* strains (NCIMB 40788 and CNCM-I-4785-LB-LH) at an equal ratio (2×10^5 CFU·g⁻¹ fresh forage, each strain). After application of the corresponding treatments, plastic bags (20 × 30 cm, 2-ply 3 mil polyethylene, Western Brands LLC, Ohio, OH, USA) were filled with 400 g of forage and immediately vacuumed and sealed on a commercial vacuum sealer (Model 3000, Weston Brands LLC). The mini-silos were stored at ambient temperature (~21 °C) in a storage room in the dark. They were disposed according to a complete randomized pattern and to allow good air-flow to insure stable temperature. In the week prior to inoculation, a cell-count was performed on the inoculant to the adjust application rate on MRS plates (Oxoid–Thermo Scientific, Hampshire, UK).

A total of 160 vacuum-bag mini-silos were prepared, 40 per treatment, with five repetitions for each treatment × time factors. The mini-silos were incubated using a completely randomized design (4 inoculation treatments × 8 opening periods). Mini-silos were opened after 0, 1, 2, 4, 8, 16, 32, and 64 days of fermentation. After the given incubation time, the corresponding mini-silos were opened, mixed, and three subsamples (fermentation profile, DNA extraction, metabolites extraction) from individual silos were immediately frozen in liquid nitrogen and stored at −80 °C.

2.2. Fermentation Profiles and Physical Characterization

Volatile fatty acids (VFA), lactic acid, ethanol, and pH were analyzed at Cumberland Valley Analytical Services. Briefly, each fermented silage sample was mixed, and a 25 g wet sample was taken and diluted with 200 mL deionized water. After overnight incubation under refrigeration, the sample mixture was blended for two minutes and filtered through coarse (20–25 µm particle retention) filter paper. For volatile fatty acid (VFA) quantification, 3 mL of the extract was filtered through a 0.2 µm filter membrane and a 1.0 µL subsample was injected into a Perkin Elmer AutoSystem Gas Chromatograph (Perkin Elmer, Waltham, MA, USA) equipped with a Restek column packed with Stabilwax-DA (Restek, Bellefonte, PA, USA). For lactic acid quantification, a 1:1 ratio of extract to deionized water was placed in a YSI 2700 Select Biochemistry Analyzer (YSI, Yellow Springs, OH, USA) to determine L-lactic acid. The pH was read prior to analysis of the titratable acidity from 30 mL of the previous extract by a Mettler DL12 Titrator (Mettler-Toledo, Columbus, OH, USA) using 0.1 N NaOH, pH 6.5.

2.3. DNA Extraction

The DNA extraction and purification protocol were adapted from the methodology proposed by Romero et al. [15] and Zhou et al. [16]. DNA extraction was performed from repetition 1, 2, and 3. Five grams of silage samples were weighed in a 50 mL conical centrifugation tube and suspended with 10 mL of sterile deionized water. The samples were then sonicated (Branson model 8800 ultrasonic water bath, 40 kHz) for five minutes and vortexed for one minute. A 3 mL aliquot of the corn silage suspension was centrifuged, and the pellet was transferred to tubes containing beads of the PowerLyzer Soil DNA Isolation Kit (MoBio Laboratories, Carlsbad, NM, USA). Microbial lysis was optimized by two minutes of mechanical lysis in a MixerMill 400 (Retsch, Inc., Haan, Germany) at a speed of 15 cycles per second. DNA isolation then proceeded according to the manufacturer's protocol. The concentration of the DNA was measured on a spectrophotometer (Nanodrop Technology, Cambridge, UK) and quality was measured by agarose gel electrophoresis (1% agarose). The concentration of DNA was standardized for all samples at 2 ng·µL⁻¹.

2.4. High-Throughput Sequencing and Bioinformatics Analysis

For amplicon sequencing, the libraries were prepared according to the Illumina 16S Metagenomic Sequencing Library Preparation guide (Part # 15044223 Rev. B), except that a Qiagen HotStar MasterMix (Toronto, ON, Canada) was used for the first PCR (amplicon PCR) and half the volume of reagents was used for the second PCR (index PCR). This protocol includes a PCR cleanup step that uses AMPure XP beads to purify amplicons from free primers and primer dimers. The template specific primers were as follows (without the overhang adapter sequence): 515F (5'-

GTGCCAGCMGCCGCGGTAA-3') and 806R (5'-GGACTACHVGGGTWTCTAAT-3') for 16S amplification from the V4 hyper-variable region, and with the ITS region 1 specific primers ITS1F (5'-CTTGGTCATTTAGAGGAAGTAA-3') and 58A2R (5'-CTGCGTTCTTCATCGAT-3') for the amplification of fungi [17]. The amplicon PCR reaction was carried out for 30 cycles with annealing temperatures of 55 °C for 16S and 45 °C for ITS. Diluted pooled samples were loaded on an Illumina MiSeq and sequenced using a 500-cycle MiSeq Reagent Kit v2 (San Diego, CA, USA, adapted from Yergeau et al., [17]). The average size of the amplicon sequences were 293 bp and 276 bp for the 16S and ITS regions, respectively.

Sequences were analyzed as described by Tremblay et al. [18]. Briefly, common sequence contaminants (i.e., Illumina adapters and PhiX spike-in reads) were removed from raw sequences using a kmer matching tool (DUK; <http://duk.sourceforge.net/>). Filtered reads were assembled with the FLASH software version 1.2.11 [19]. The assembled amplicons were trimmed to remove forward and reverse primer sequences in each read using in-house Perl scripts. Paired-end assembled amplicons were then filtered for quality. Sequences with more than one undefined nucleotide, an average Phred score lower than 30, or more than 10 nucleotides with a quality score of less than 10 were discarded. De novo operational taxonomic unit (OTU) generation was performed using a three step-clustering pipeline. Briefly, quality-controlled sequences were dereplicated at 100% identity. These 100% identity clustered reads were then denoised at 99% identity using *dnacust* [20]. Clusters of fewer than three reads were discarded, and the remaining clusters were scanned for chimeras using UCHIME de novo, followed by a UCHIME reference using the Broad's Institute 16S rRNA Gold reference database. The remaining clusters were clustered at 97% identity (*dnacust*) to generate OTU.

Taxonomy assignment of the resulting bacterial and archaeal OTUs was performed using the RDP classifier with a modified Greengenes training set built from a concatenation of the Greengenes database (version 13_5). Taxonomy assignment of fungal OTUs was performed using the SH Qiime release 20.11.2016 database (version 7.1). Hierarchical tree files were generated with in-house Perl scripts and used to generate training sets using the RDP classifier (v2.5) training set generator's functionality [21]. A bootstrap cutoff of 50% was applied to each query to generate final taxonomic lineages. With taxonomic lineages in hand, OTU tables were generated and normalized using edgeR's Relative Log Expression (RLE) method [22], as suggested by McMurdie and Holmes [23].

Bacterial/archaeal OTU representative sequences were aligned on a Greengenes core reference alignment [24]. Alignments were filtered to keep the V4 hypervariable region of the alignment. A phylogenetic tree was then built from this alignment with FastTree [25]. Alpha diversity (observed OTUs) was computed from un-normalized OTU tables, rarefied at 1000 reads with 10 permutations, for both 16S and ITS. For 16S data, weighted Unifrac distances were generated using the normalized OTU table and the phylogenetic tree previously generated. For ITS data, the Bray–Curtis dissimilarity metric was generated from the normalized OTU table. Taxonomic profiles were computed from the normalized OTU tables using the QIIME software suite version 2017.6.0 [26,27]. Permanova analyses with 1000 permutations were done in R using the *adonis* function of the *vegan* library. One sample from the 16S dataset (LB–LH, day 16 experimental condition) and one sample from the ITS dataset (control day 64 experimental condition) failed to give enough reads for downstream analyses and were therefore excluded from our analyses.

The 16S rDNA sequences from the microbiota analyses have been deposited in the NCBI BioProject database under the study accession number PRJNA510327.

2.5. Statistical Analysis

The effect of the incubation time on the fermentation parameters and the differences between the inoculation treatments were analyzed using a mixed-effect model with temporal pseudoreplication [28] using R version 3.3.3 [29]. The *nmle* package was used by the mixed-effect model [30]. The fixed-effect formula was the tested parameter–treatment, while the random-effects formula was ~day|silo. The following fermentation parameters were individually tested by the model: pH, lactic acid, acetic acid, and the ratio of lactic acid to the sum of acetic acid and ethanol

(LA/AAEtOH). A linear model was used in the preparation of some figures using the equation $y \sim ns(x^3)$ from the splines package of R (version 3.4.0). The confidence interval bounding the trend lines was computed using the predictdf function of the package from *t*-based data and from standard error results of the glm function. The confidence interval was set to 95%. Significant differences were declared at $p < 0.05$ and as biological trends at $p < 0.10$.

In order to test the difference in OTUs between treatments at the Phylum, Order, Family, and Genus level, comparisons for each time period were performed independently using GLM (generalized linear model) with the treatment as independent variable and the targeted OTU as the response variable (e.g. Lactobacillaceae).

According to our experimental design, differentially abundant OTUs (DAO) were assessed with edgeR (v3.10.2) using its GLM approach [31], with OTU table raw count matrices as inputs. OTUs having a logFC (log fold-change) ratio equal or higher than 1.5 and FDR (false discovery rate) < 0.05 were considered as differentially abundant. Contrast analyses were performed between openings and the time of fermentation to generate statistical differences from the OTU sequences selected by the edgeR package version 3.16. The log transformation of the FC (fold change) and CPM (counts per million) values were used to generate histograms using in-house scripts, including ggplot functions. Lastly, both the 16S amplicon data and the ITS amplicon data were used to perform a linear discriminant analysis using the MASS package (v7.3-47) in R [32].

3. Results and Discussion

3.1. Eubacterial Succession over the Incubation Period

To date, only a few metagenomic studies of silages have been reported [10,15,33,34]. Our results showed that the populations of eubacteria observed on the corn samples collected immediately after inoculation, but prior to ensiling, were mainly composed of genera belonging to Proteobacteria ($56.4 \pm 1.5\%$) orders Pseudomonadales, Xanthomonadales, and Enterobacteriales, and Bacteroidetes ($37.4 \pm 1.7\%$) orders Sphingobacteriales and Flavobacteriales. Samples of the four treatments harbored identical relative abundance of these different taxonomic orders, with slight variations in Flavobacteriales in some samples (14.6 to 20.8%). The genera *Flavobacterium* and *Chryseobacterium*, belonging to the Flavobacteriales order, dominated the fresh forage samples with means of $10.2 \pm 1.4\%$ and $7.0 \pm 0.6\%$ of total OTUs, respectively. Sequences affiliated to the Lactobacillales order represented only $3.2 \pm 0.9\%$ of the total population in the fresh samples. Lactobacillales were substantial contributors of the Firmicutes phylum, with the *Leuconostocaceae* family representing between 60% and 100% of the fresh forage sample composition. Our results for fresh forage do not corroborate those of Gharechahi et al. in maize silage [35], but are more in line with the diversity observed in fresh small grains [33] or oats [15], as well as with data published by McGarvey et al. [36] on alfalfa. The Shannon diversity index was highest for the fresh maize samples, with a mean of 5.26 ± 0.27 . Additional microbial community profiles from fresh corn samples taken one month prior to ensiling were consistent with our results for fresh forage (see Figure S1).

During the fermentation period, bacterial succession could be grouped in three phases (Figure 1). The first phase covered the first few days of fermentation with *Leuconostocaceae* as the dominant OTU. The second phase, from day 4 to 16, was defined by OTUs related to *Lactobacillaceae*. The third phase, from day 32, was characterized by the succession of heterofermentative *Lactobacillus* OTUs. Going forward, it is important to underscore that, starting from day 8, the bacterial community successions were largely dominated by OTUs assigned to the *Lactobacillaceae* family (in red in Figure 1A) and *Lactobacillus* genus (in blue in Figure 1A). Throughout the text, these two taxa will be referred to and represented as two distinct entities. This succession of lactic acid bacteria genera has already been described [7]. It has also been reported in different forage species [37,38], but the resolution offered by next generation sequencing provided insights into the slight differences between treatments following inoculation of similar taxa.

Within 1 to 2 days of incubation, a major shift in microbial community profiles was observed (Figure 1A), whatever the treatment. In that period, Firmicutes became dominant with 56–66% of the

sequences, followed by Proteobacteria (31–44%, with *Enterobacteriaceae* with 30–41% of the sequences). The Phylum Bacteroidetes represented only $1.3 \pm 0.2\%$ ($p = 0.384$) of the reads after 2 days. Within Firmicutes, the families *Leuconostocaceae* and *Streptococcaceae* accounted for respectively 44–52% and 7–11% of the total population of the different silages. *Streptococcaceae* OTUs were related to the genus *Lactococcus*. Within the Proteobacteria phylum, the *Enterobacteriaceae* family was mainly composed of OTUs from the genera *Citrobacter*, *Brenneria*, *Enterobacter*, *Erwinia*, and *Serratia*. Our results after 1 day of incubation are in line with the diversity reported at time 0 by Gharechahi et al. [35] and to data after 1 and 2 days from Keshri et al. [39].

After two days of fermentation, the diversity profiles resembled those found after 1 day (Figure 1A). The main difference was the higher relative abundance of *Lactobacillaceae*, which increased from $2.6 \pm 0.4\%$ (Control) to $8.9 \pm 1.4\%$ (LB–LH) ($p < 0.001$), and *Lactobacillus*, in particular in LH and LB–LH treated silages, with abundance of $5.2 \pm 1.1\%$ and $7.5 \pm 1.3\%$, respectively ($p < 0.001$ between the four treatments).

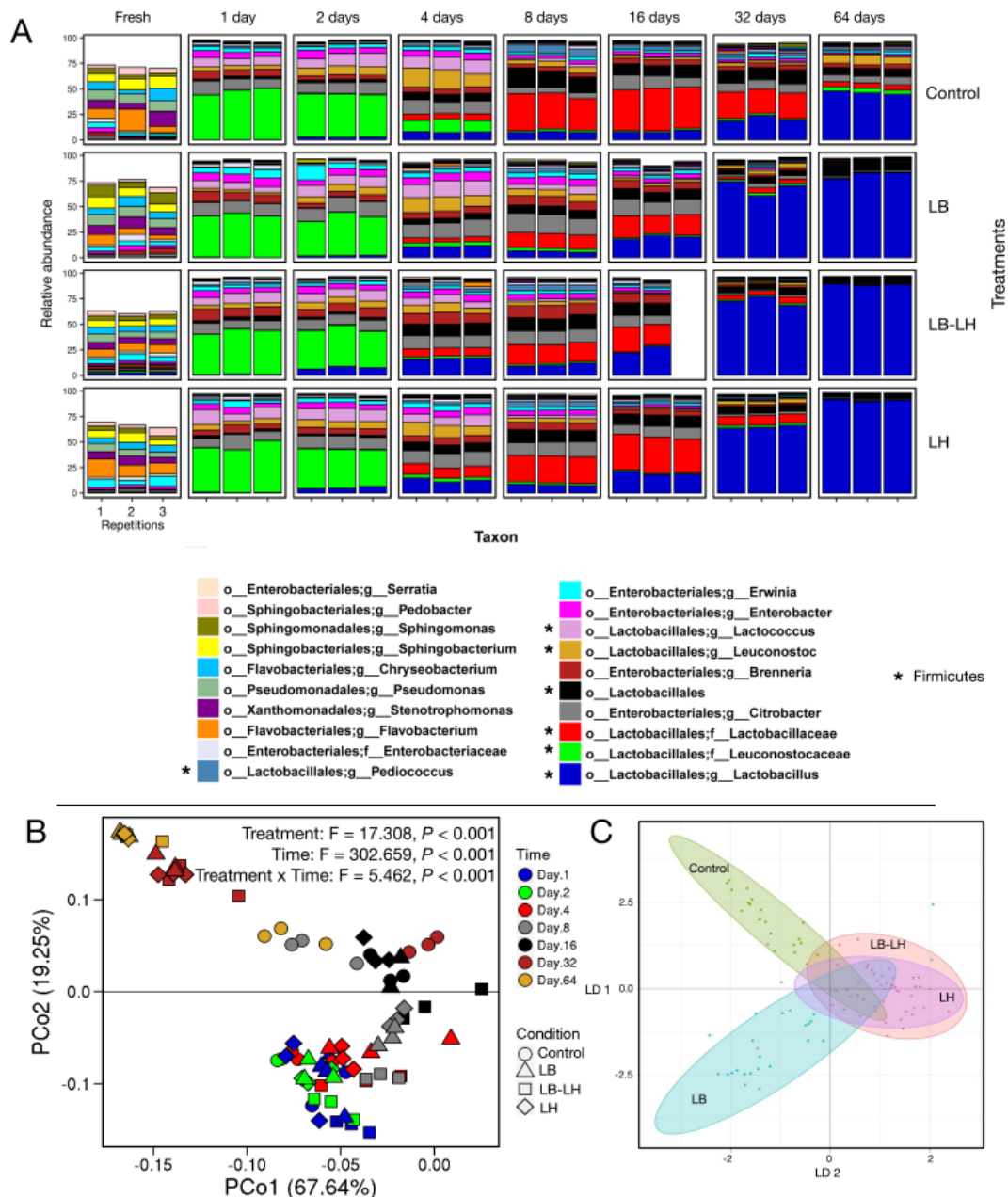


Figure 1. Bacterial composition by 16S rDNA gene amplicon metasequencing (V4 region) in corn silages under four inoculation treatments for eight fermentation periods, between fresh and 64 days of ensiling (A). Each panel corresponds to one fermentation treatment (inoculant × time) and the diversity results of three independent repetitions. The color code shows the 20 most abundant taxa computed using all 32 ensiling conditions. Taxon identification was at the genus level. Results of the principal coordinates analysis (B) and the linear discriminant analysis (C) computed from the complete metasequencing results are shown. Principal component analysis of the weighted Unifrac distance values was performed without the results for the fresh samples because the dissimilarity was so great that the effect of fermentation time was hard to visualize. Operational taxonomic units (OTUs) identified by * belong to the Firmicutes phylum.

Samples incubated for 4, 8, and 16 days presented a different bacterial profile from those observed at 1 and 2 days. Figure 2 shows the microbial changes observed over time and was generated using the two dendrograms computed by correlation analysis from the heatmap (see Figure S2). At days 4, 8, and 16, a major increase in the relative abundance of *Lactobacillaceae* members was observed, with proportions ranging from $16.4 \pm 0.8\%$ (day 4, Control) to $56.1 \pm 2.2\%$ (day 16, LH). *Lactobacillus* still represented a small fraction of the community, but unassigned OTUs affiliated to *Lactobacillales* or *Lactobacillaceae* were more abundant. The *Enterobacteriaceae* genera *Citrobacter* and *Serratia* were still present, and the proportion of *Citrobacter* was often higher (day 16: 9.9% to 14.8%, $p = 0.077$ between treatments) than earlier in the ensiling process. *Enterobacteriaceae* were more abundant in LB treated samples (day 16: $33.0 \pm 3.1\%$) than in LH treated samples ($23.3 \pm 2.8\%$). Relative abundance of OTUs related to *Leuconostocaceae* was lower during this phase of fermentation compared to the observed values at 1 and 2 days of incubation, possibly related to their poor tolerance of low pH [7]. LH and LB–LH treated silages had smaller proportions of this family, with $2.8 \pm 0.3\%$ and $2.3 \pm 0.2\%$, respectively ($p < 0.001$ between treatments), compared to $4.0 \pm 0.3\%$ in the Control and $4.1 \pm 0.2\%$ in LB.

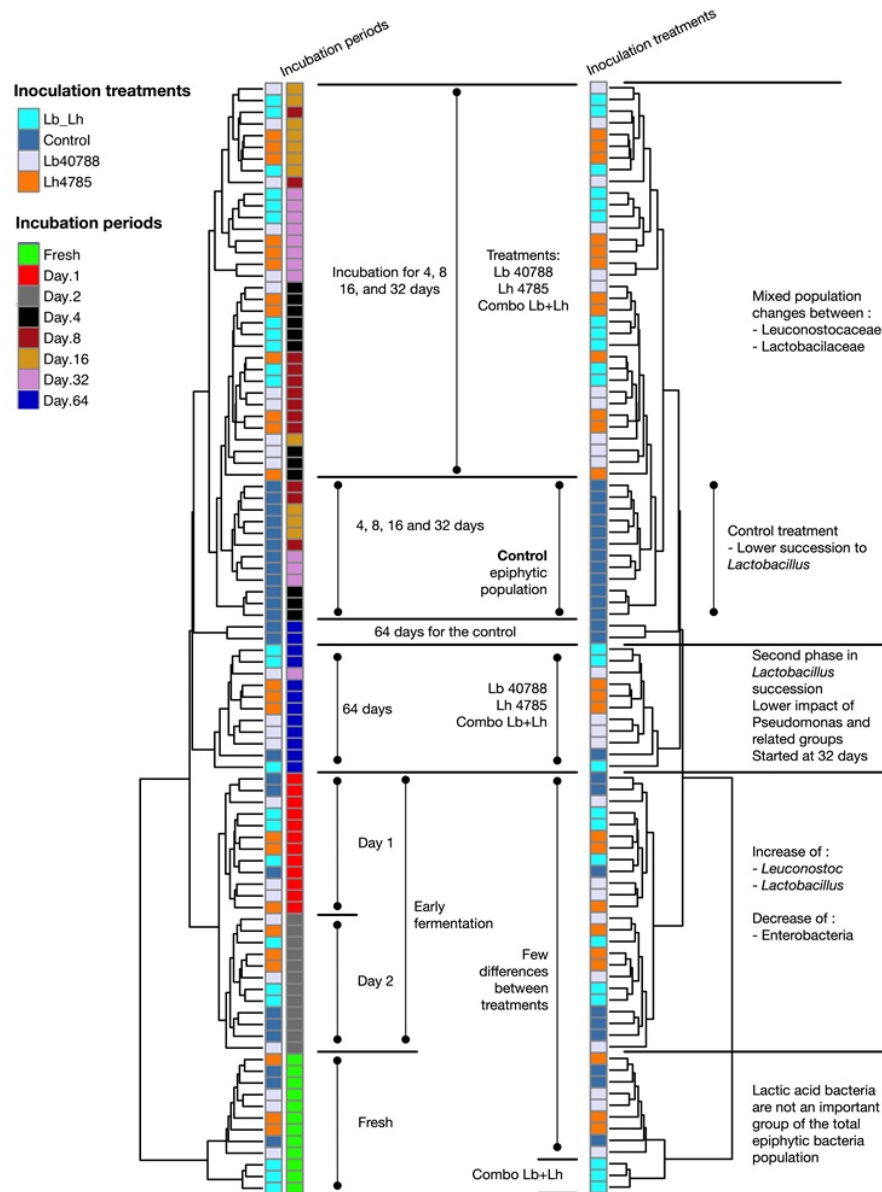


Figure 2. Main variations in Eubacteria diversity using the UPGMA dendrogram generated for analysis of the heatmap (see Figure S2).

After 16 days of fermentation, the smallest proportion of *Lactobacillus* related OTUs was found in the Control silages ($8.3 \pm 1.2\%$ in the Control versus $19.4 \pm 1.8\%$ (LH) to $25.3 \pm 4.4\%$ (LB–LH) in inoculated silages ($p < 0.001$)). OTUs affiliated to the *Pediococcus* genus were retrieved in this fermentation phase whatever the treatment (days 4 to 16). In the Control samples, *Lactococcus* slowly disappeared during this period, and by day 8, they represented only a minor fraction of the community. *Lactococcus* represented a higher proportion of the population in LB samples on day 4 ($14.4 \pm 1.3\%$, $p < 0.001$), and still represented a substantial proportion of the diversity in LB samples at day 8 ($6.1 \pm 1.9\%$, $p = 0.009$). Lastly, at day 16, OTUs linked to the genus *Brenneria* (*Enterobacteriaceae*) were found in all inoculated silage samples, with LB and LB–LH having the highest proportion ($7.3 \pm 1.2\%$ to $9.0 \pm 1.2\%$, respectively), and LH and the Control having the lowest ($\sim 5\%$) ($p = 0.012$).

In the third phase, the relative abundance of Lactobacillales increased markedly in the three treated silages (up to $92.3 \pm 1.6\%$, $94.1 \pm 0.2\%$, and $94.4 \pm 0.7\%$ in LB, LH, and LB–LH, respectively, by day 64). The increase was not observed in the Control silages, in which Lactobacillales related OTUs represented only $74.8 \pm 2.4\%$ ($p < 0.001$ between treatments). This result is in agreement with the

observation made by Eikmeyer et al. [10] following microbiota analysis of treated and untreated grass silage and suggests the establishment of inoculated strains in the silage, or the promotion of other *Lactobacillus* species due to inoculation.

Leuconostoc was still present in the Control at the last opening, with $8.6 \pm 1.2\%$ of the relative abundance, along with unassigned *Leuconostocaceae* ($12.9 \pm 1.6\%$ versus a mean of 1.0% in the treated samples, $p < 0.001$). *Citrobacter* ($7.1 \pm 0.6\%$), *Brenneria* ($4.0 \pm 0.5\%$), and *Erwinia* ($2.2 \pm 0.5\%$) accounted for another 13% of the population in the Control samples (Figure 1). The number of OTUs affiliated to these three genera was about ten times smaller in the treated samples ($p < 0.001$ for all three OTUs between treatments).

In a study performed using a similar experimental design on corn silage, with sampling time between 3 h to 90 days, Keshri et al. [39] observed similar phases of colonization and of bacterial richness evolution. They compared a non-inoculated control to silage, inoculated with a *L. plantarum* strain, but had the same interactions between *Leuconostocaceae* and *Lactobacillaceae* in relation with time of fermentation. Similar to their results, we observed that bacterial richness dropped after ensiling, then increased during the transition from *Leuconostocaceae* to the *Lactobacillaceae*, and then dropped again toward the transition to the heterofermentative LAB strains (Figure S3).

Principal component analysis was performed using the weighted unifracs distance values computed between the microbiota associated with the different types of silage and the course of fermentation (Figure 1B). The x-axis accounted for 67.6% of the observed differences and showed the shift in population between the three main periods, days 1 and 2, days 4 to 16, and days 32 to 64. Results from a PERMANOVA analysis show that the treatments, opening periods, and the interaction treatments:openings were significant, at $p < 0.001$, for the 16S amplicons. The y-axis separated the samples according to the duration of fermentation, which explained 19.3% of the changes in diversity between the samples. The Control samples (Figure 1B) clearly differed from the inoculated samples at 32 and 64 days of fermentation, indicating that the succession of the bacterial population slowed down after 16 days of fermentation. This observation means that inoculation favors a faster succession to a potentially more stable silage, with fewer active species.

In addition, a discriminant analysis (Figure 1C) was performed using the complete OTU dataset, after exclusion of the fresh samples. The results of the analysis showed that microbial succession followed similar trends in LB-LH and LH, but was more distinct between LB and Control. The comparison of the relative abundance of Lactobacillales could explain part of the observed difference (see Figure 3 and the heatmap Figure S2 in the Supplementary Materials). Considering that the discriminant analysis includes the effects of both time and treatment, understanding the links to a specific parameter is not easy.

To advance our understanding of the difference in microbial succession between treatments, variations in OTU abundance were subjected to contrast analysis using the edgeR package. Two values were generated for each individual OTU by pairwise comparison between treatments. The variation in the number of individual OTUs between two treatments was represented as logFC (fold change), and the difference in the number of individual OTUs was represented as logCPM (count per million). Although the computation was performed for each opening, only the results from the last opening are discussed here (Figure 3). To understand the dynamic for individual OTUs, the sequences were manually compared to the NCBI database in order to annotate the phylogenetic identification. Additional analyses of the contrasts using this manual annotation are presented in the Supplementary Materials in the form of two tables (Tables S1 and S2), comparing the identity of the main OTUs that increased or decreased between the different treatments. Taxonomic identification of one key OTU pointed to several species. The highest scoring hits against the sequence of this OTU (303 bp, % identity <99.26) were affiliated to either *Lb. hilgardii*, *Lb. diolivorans*, or *Lb. farraginis* (LH-LD-LF) following a BLAST search. After 64 days of fermentation, Control samples displayed higher population diversity than LB, LH, or LB-LH (Figures 3 and S3). The OTU (253 bp, % identity 100.00) with the highest logFC value (−8.69) was assigned to *Bacillus pumilus* or *Bacillus safensis*. *B. pumilus* is often observed during aerobic deterioration [40]. This could mean that inoculation had an impact on the integrity of *Bacillus* spores, thereby potentially reducing the abundance of this specific OTU.

Several OTUs related to Lactobacillales were more abundant in the Control samples, as well as OTUs related to Burkholderiales and Pseudomonadales. When we compared Control and LB microbiota (Figure 3), several OTUs affiliated as *Lactobacillus* were more abundant in LB, including *Lb. buchneri*, but also *Lb. ingluviei*, *Lb. pentosiphilus*, *Lb. harbinensis*, and *Lb. brevis*. Three OTUs related to LH-LD-LF were also observed, one of which may be related to *Lb. diolivorans*. The LH-LD-LF related OTU was also observed in LB-LH or LH at day 32, and at a lower intensity at day 64. Inoculation with LH either alone or combined with LB led to a reduced set of differentially abundant OTUs versus Control (three in LB-LH samples and two in LH samples). One of these OTUs was affiliated as either LH-LD-LF and we hypothesize that it was *Lb. hilgardii* with this treatment. For LB-LH, the three OTUs identified by the contrast analysis were LH-LD-LF (putatively *Lb. hilgardii*), *Lb. buchneri* (280 bp, % identify 100.00), and *Lb. helveticus* (251 bp, % identify 96.02). The two OTUs linked to LH were LH-LD-LF and *Lb. helveticus*. The OTU related to *Lb. brevis* (293 bp, % identify 99.63) was generally absent from the LB-LH and LH treatments, while OTU related to *Lb. helveticus* was absent from LB but present in LH. Few diversity studies on silages mention having identified *Lb. helveticus*, but a study of lactic acid bacteria diversity in tomato pomace silage reported that 4% of the isolates belonged to *Lb. helveticus* [41], which suggests this species is part of the common lactic bacteria community. However, direct inoculation of wilted rice straw with a *Lb. helveticus* strain had no effect on the ensiling process, and the strain only survived for five days post-inoculation [42]. When we compared LB and LB-LH, some of the previously discussed OTUs were more abundant in LB, including OTU related to *Lb. ingluviei* (252 bp, % identify 98.41), *Lb. kimchicus* (272 bp, % identify 99.62), *Lb. harbinensis* (251 bp, % identify 99.60), and *Lb. brevis* (293 pb, % identity 99.63). In a recent metasequencing study in which corn stover was inoculated with different *Lactobacillus* strains, *Lb. brevis* was identified during the early ensiling phase, i.e., between 10 and 30 days of fermentation, in the un-inoculated control and *Lb. brevis* or *Lb. parafarraginis* treated as forage only [43]. We observed similar trends, but after a slightly longer incubation period, after inoculation with LB. Two OTUs affiliated to the genus *Stenotrophomonas* were specific to LB. *Stenotrophomonas* are encountered in the plant rhizosphere and endosphere and *Stenotrophomonas* is a common soil microorganism [44].

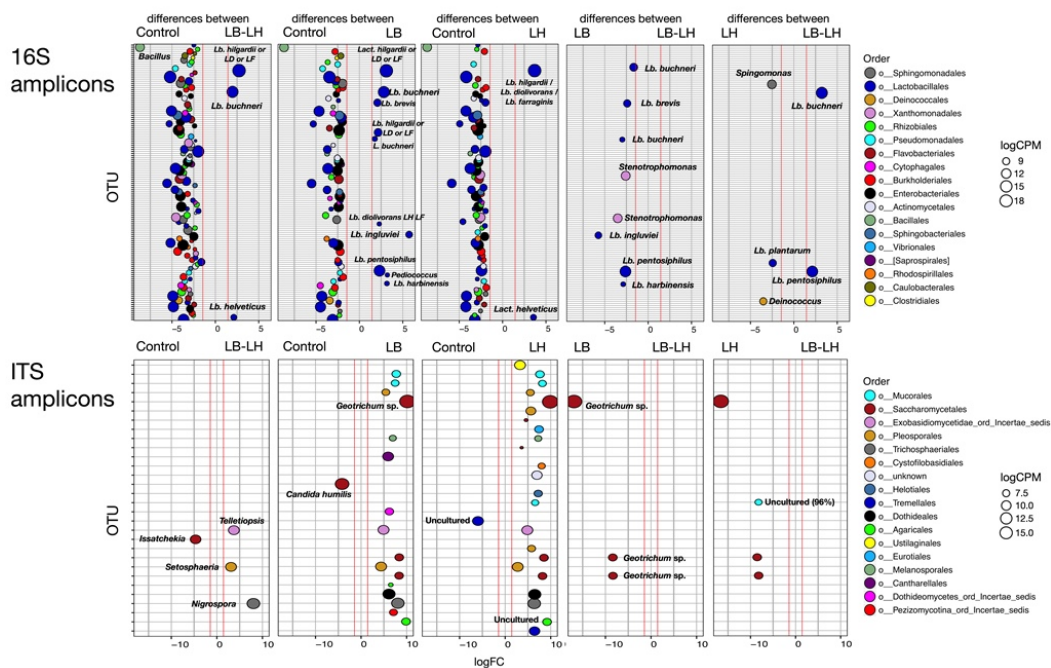


Figure 3. Contrast analysis of amplicon sequencing data of the samples after 64 days of ensiling using the EdgeR package from the 16S amplicons and the ITS amplicons. OTUs whose abundance differed significantly between the Control and the three inoculation treatments or between the inoculation treatments themselves are shown. LogFC (fold changes) and logCPM (count per million) were used for the representation. Only OTUs with a logFC ≤ 1.5 (red line in each panel) and false discovery rate

(FDR) value <0.05 were considered as being differentially abundant. Color coding is based on the taxonomic classification of individual OTUs. Taxonomic identification of the OTU affiliated as *Lb. hilgardii* could also be related to *Lb. diolivorans* or *Lb. farraginis*, according to the current database search (LH-LD-LF).

3.2. Fungal Succession during the Course of the Incubation Period

Although major modifications of the fungal community were observed during fermentation, the fungal succession pattern was less distinct than that of bacteria (Figure 4A,B). Two main phases were observed, and an increase in the yeast population, with the final high abundance of *Candida*, *Dipodascus*, or *Hannaella*, were the main changes in this succession.

In the fresh samples, the majority of OTUs were affiliated to *Epicoccum*, *Cladosporium*, *Giberella*, *Bulleromyces*, *Neosetophoma*, and *Sarocladium* genera. The genus *Epicoccum* completely disappeared in the first day of ensiling, while *Neosetophoma* (1 day: ranging from 15.9 to 23.7%; 2 days: ranging from 15.1 to 17.8%) and *Peyronellaea* (1 day: 3.4 to 10.5%; 2 days: 12.7 to 22.1%) became the dominant genera after 1 and 2 days, respectively. *Epicoccum* is a ubiquitous saprophytic mould often associated with plant senescence and the early phases of composting [45]. *Neosetophoma* is an Ascomycete belonging to the Phoma group which may have saprophytic functions [46]. Several species of the genus *Peyronellaea* are plant pathogens. The *Sarocladium* were present throughout the fermentation period at abundance ranging from $1.0 \pm 0.1\%$ (Control, day 64) to $15.7 \pm 2.5\%$ (LB, day 2). Most *Sarocladium* species are important plant pathogens [47].

The second fungal succession phase extended from day 4 to day 32 and corresponded to an increase in yeast related OTUs. The main yeast genera were *Candida*, *Dipodascus*, *Hannaella*, *Hanseniaspora*, *Kazachstania*, and *Metschnikowia* (alphabetical order). Throughout this second phase, the relative abundance of the yeasts *Candida* and *Hannaella* increased up to 45% of the total OTUs in LB ($22.5 \pm 10.7\%$ *Candida*, $21.6 \pm 4.7\%$ *Hannaella*) and LB-LH ($17.5 \pm 7.6\%$ *Candida*, $28.4 \pm 20.2\%$ *Hannaella*) treated silages after 32 days. *Kazachstania* was the dominant yeast genus after four (7.0 to 16.6%) and eight (9.4 to 20.7%) days of fermentation, but subsequently decreased in abundance in all but the Control samples. Santos et al. [48] studied the diversity of yeast populations in corn and high moisture corn silages. They reported that isolates obtained on malt agar plates showed that *Candida*, *Saccharomyces*, *Pichia*, and *Kazachstania* were the dominant genera. A similar study was performed on corn silage [49], which identified *Issatchenkia*, *Geotrichum*, and *Pichia* as the dominant genera. Mansfield and Kulda [50] reported that *Geotrichum candidum* was the dominant yeast in corn silage from Pennsylvania over a two-year period. The differences in key genera between published reports, and also from our study, are likely partly due to the different methods of identification used, as pointed out by Dunière et al. [33] in the case of fungal populations. Santos et al. [13] observed significant discrepancies in populations between samples due to geographic or environmental differences.

PCoA analysis performed from the Bray–Curtis dissimilarity index (Figure 4B) confirmed the trends observed in the heatmap (Figures 5 and S2). The x-axis explained 40.4% of the difference and allowed for a separation of the samples in relation with fermentation time into three groups, the first containing fresh samples, the second containing day 1 and day 2 groups, and the third containing all later ensiling time points (days 4 to 64). Results from a PERMANOVA analysis show that the treatments, opening periods, and the interaction treatments:openings were significant ($p < 0.001$) for the ITS amplicons. The observed variation between samples was related to the inoculation treatment as well as the time of incubation.

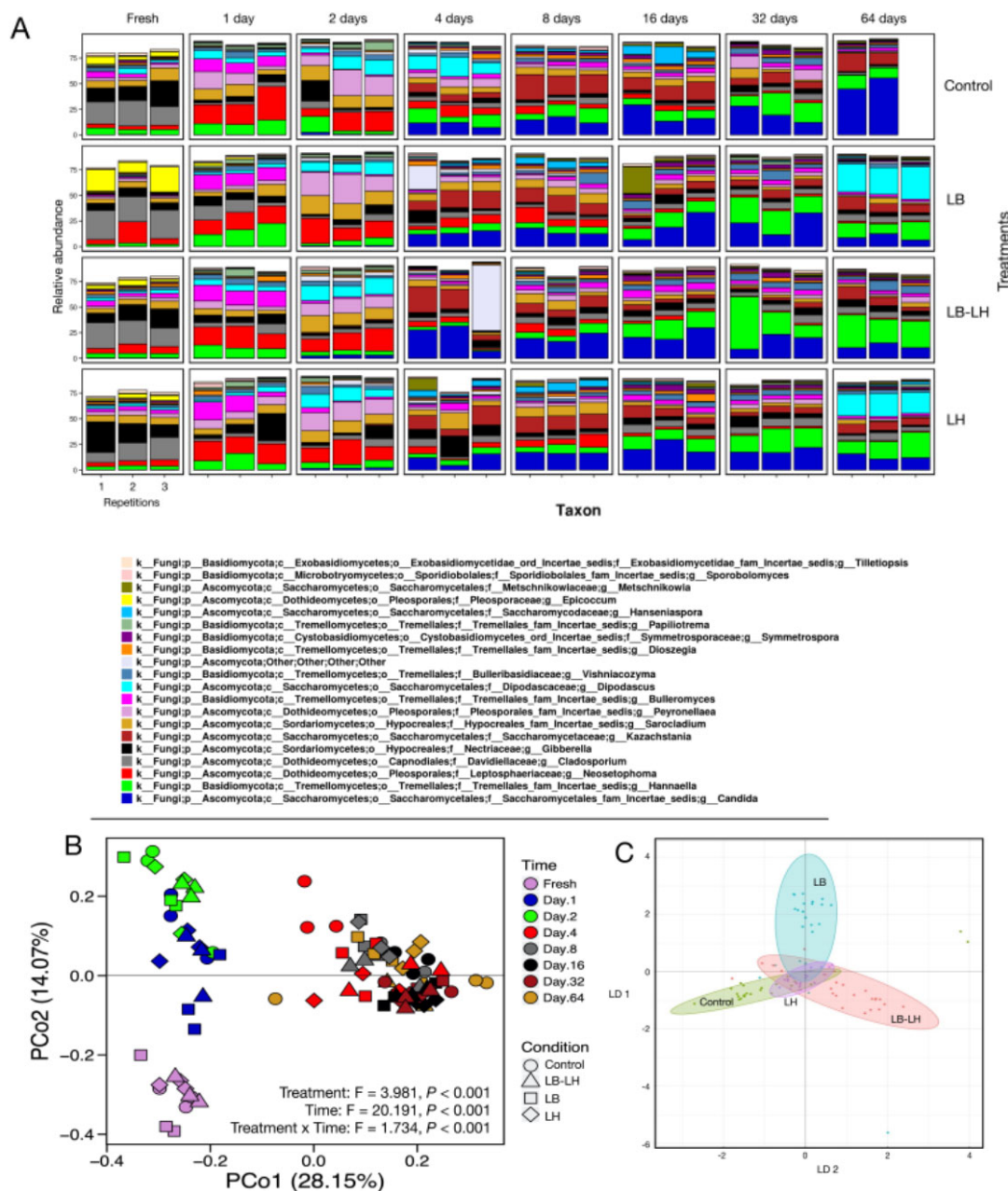


Figure 4. Fungal composition according to ITS amplicon metasequencing (ITS1 region) from corn silages under four inoculation treatments and eight fermentation periods, between fresh and 64 days of ensiling (A). Each panel corresponds to a fermentation condition (inoculation treatment \times time) and the sequencing results of three independent repetitions. The color coding represents the 20 most abundant taxa, computed using all 32 ensiling conditions. Taxon identification was at the genus level. Principal component analysis (B) and linear discriminant analysis (C) computed from the complete metasequencing results are presented. The PCA was performed from the Bray–Curtis dissimilarity matrix data.

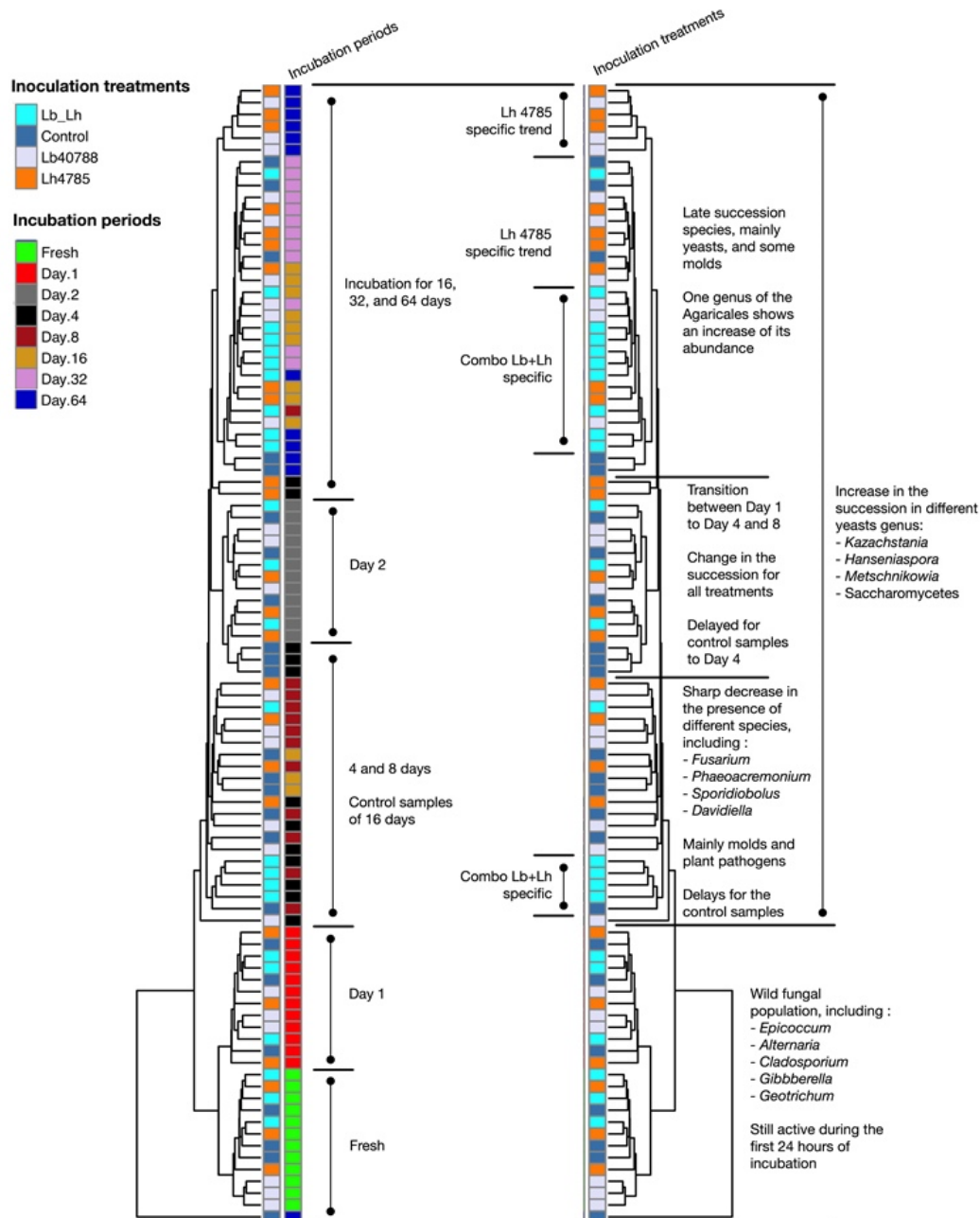


Figure 5. Main changes in fungal diversity using the UPGMA dendrogram generated for analysis of the heatmap (see Figure S4).

After 64 days of fermentation, specific patterns were visible between treatments. The differences were related to the presence of certain yeast genera. An OTU affiliated as *Dipodascus* was present in LB and in LH in nearly $28.3 \pm 2.9\%$ and $21.4 \pm 1.0\%$, respectively, of total sequences. Further analysis of the sequence of that OTU using a BLASTn search of GenBank (release 222.0) led to closer identity with the genus *Geotrichum*. Both genera belong to the family *Dipodascaceae* and taxonomic revisions are underway [51], as *Geotrichum* may be the anamorphic state of species of the genera *Dipodascus* and *Galactomyces* [52]. Interestingly, the OTU associated with *Dipodascus* was almost absent from LB–LH and Control samples at day 64 ($0.10 \pm 0.01\%$ and $0.08 \pm 0.01\%$ of the relative abundance), while at day 2, it was present in all four treatments ($10.0 \pm 2.2\%$ to $13.8 \pm 2.8\%$). The absence of *Dipodascus* OTU in the LB–LH treatment after 64 days of fermentation is hard to explain, since OTUs of this genus are present when LB or LH are used separately. It was not possible to link the absence of *Dipodascus* to

the enrichment of another fungal OTU. The yeast *Geotrichum* has already been reported in silage [53] and this genus is also important for the cheese industry, as *Geotrichum candidum* dominates yeast dynamics in some cheeses, particular characteristics of the cheese surface [54], and is considered to be safe by the food industry [55].

The OTU related to *Candida* clearly dominated the Control treatment after 64 days of ensiling, with $50.2 \pm 7.5\%$ of the relative abundance. The inoculated LB samples had $9.3 \pm 3.1\%$ and $12.9 \pm 2.5\%$ for LH ($p < 0.001$) of *Candida* OTUs.

Inoculation with the obligate heterofermentative strains led to significant differences from the Control at day 64. While the Control was dominated by Saccharomycetales ($68.4 \pm 1.7\%$ relative abundance), LB–LH treated silage had the lowest abundance of OTUs related to that order ($22.0 \pm 5.1\%$), and $49.8 \pm 1.5\%$ and $47.4 \pm 3.0\%$ of relative diversity were observed in LB and LH treated silage samples, respectively ($p < 0.001$ between treatments). At the genus level, this difference was associated with a decrease in *Candida* related OTUs in the inoculated samples. Tremellales were also more abundant in LB–LH treated silage than in the other silages (OTUs of *Hannaella* were the dominant genus in this family), with $41.1 \pm 2.1\%$ of the total abundance ($p = 0.002$ versus other treatments). Microbiome analysis of sweet sorghum revealed *Hannaella* early in the fermentation process and was linked to high total sugar content [56].

Sequences affiliated with the yeast genus *Kazachstania* were abundant in the fungal community after 4 and 8 days of fermentation, with highest relative abundance of $20.7 \pm 3.4\%$ for the Control at day 8. This population subsequently decreased in all treatments until, by day 32, it represented only a low ratio of the total population, $8.2 \pm 2.4\%$ in the Control and $3.2 \pm 1.8\%$ of the OTUs in LB–LH ($p = 0.038$). At day 64, the *Kazachstania* OTU ratio increased to a mean of $9.8 \pm 1.1\%$ ($p = 0.222$ between treatments).

After 64 days of fermentation, the observed fungal species in LB and LH were greater than in the Control ($p = 0.022$), with 70.0 ± 10.1 , 94.3 ± 9.3 , 92.3 ± 5.7 , and 86.6 ± 6.7 observed species in the Control, LB, LH, and LB–LH treated silages). The presence of the *Dipodascus* OTU was associated with the highest fungal diversity (LB and LH), while *Candida* OTUs were associated with lower fungal alpha diversity (Control). However, care should be taken when extrapolating the results of the contrast analysis (Figure 3) since differences in low-abundance OTUs may be significant. As logCPM values for most OTUs analyzed here were high, we consider that the differences reported between treatments are meaningful.

Although aerobic stability was not measured in our study, the LB–LH combination has been shown to improve aerobic stability in another study using the same forage [57], and several authors demonstrated that *Lb. buchneri* 40788 improves aerobic stability by reducing yeast counts [58]. Thus, we could hypothesize that a better control of yeast population by LB–LH would induce an improved AS in corn silage. Other biochemical mechanisms cannot be ruled out since lower yeast counts may also be associated with a different fungal community profile.

3.3. Fermentation Profiling

Changes in pH and in organic acids followed the rapid succession of Eubacteria observed within the first 2 days of fermentation (Figure 6A). The initial drop in pH, down to a mean of 5.01 ± 0.05 ($p = 0.008$) and 4.24 ± 0.01 ($p = 0.070$ between treatments) after 1 and 2 days, respectively, could result from the activity of *Leuconostoc*, *Lactococcus*, and *Enterobacter*, since they collectively represented the dominant OTUs during this period. A change in LAB populations was previously reported and explained by the lower resistance to acid of the primary colonizing species [59]. As the pH reached its lowest value, i.e., a mean of 3.77 ± 0.01 ($p < 0.001$ between treatments) after 8 days of fermentation, the earlier colonizing species were replaced by *Lactobacillaceae*. Although *Leuconostocaceae* species have been reported to be more sensitive to low pH [7], they still represented around 4% of the population in the Control and LB treated silage at the end of the second bacterial population succession, after 16 days of fermentation. Following linear modeling of the pH interactions between time and treatments, the p values were all over 0.5, so the four pH curves showed a similar profile (Table 1).

The main difference between treatments was clearly lactic acid and acetic acid concentrations (Table 1, Figure 7B,C). Lactic acid concentration was similar between inoculated samples and the Control up to 16 days of incubation. Subsequently, while the concentration remained at slightly more than 40 g lactic acid·kg⁻¹ DM in the Control samples, it dropped in the treated silages. In LB, it dropped to 15.2 ± 0.8 g lactic acid·kg⁻¹ DM by day 64 (Figure 6B). The significant drop in lactic acid was not observed in LH samples, even though *Lb. hilgardii* is an obligate heterofermentative LAB [60]. After 64 days of incubation, the lactic acid concentration in the LH treated samples was 35.0 ± 1.2 g·kg⁻¹ DM, close to the concentration measured in the Control. At the last opening, the concentration of lactate in the LB–LH treated silages, 23.8 ± 0.8 g·kg⁻¹ DM, was between the values measured when LB or LH were inoculated independently. The results of the mixed-effect model (time × treatment) indicated a significant difference in the lactic acid curve in LB compared to the Control, while the difference between LB–LH and the Control was not significant (Table 1). This slight difference characterized the strong similarity in lactate accumulation between LB–LH and LB in several of the seven openings, which mainly differed at day 64 (Figure 6, $p < 0.001$ between treatments). Although LH led to a higher accumulation of lactic acid, changes in the fermentation pattern that occurred early in the process confirm the slight difference in the microbial community structure compared to LB and the LB–LH. As shown by the contrast analysis, LB treated silage harbored a higher diversity of LAB, mainly obligate heterofermentative species, including *Lb. brevis*- and *Lb. ingluviei*-related OTUs. These species could have contributed to the conversion of lactate to acetate in LB [61].

The concentration of acetic acid differed between the three treatments and the Control samples ($p < 0.001$) (Table 1, Figure 6C) during the incubation period, but was within the expected values for corn silage [62]. Differences were already observed after the second day of fermentation, and significant differences were observed at day 8 ($p < 0.001$, SEM = 0.77, with 10.9 ± 1.3 g·kg⁻¹ DM for Control and 13.3, 13.8, and 19.8 g·kg⁻¹ DM acetic for LB–LH, LB, and LH, respectively). According to the diversity data, Control samples had a higher abundance of unidentified *Lactobacillaceae* and *Lactobacillales* (Figure 1), which were not necessarily replaced by OTUs affiliated to *Lactobacillus*. After 64 days of incubation, the concentration of acetic acid in LB was 40.4 ± 4.1 g·kg⁻¹ DM, similar to that in the LB–LH and LH treatments, with 40.4 ± 4.6 and 36.0 ± 3.1 g·kg⁻¹ DM, respectively ($p < 0.001$, SEM = 2.28). The concentration of acetic acid in the Control samples after 64 days of fermentation was 17.5 ± 1.6 g·kg⁻¹ DM, i.e., in the range of published reports [5]. In a study of co-inoculation with *Lb. plantarum* and *Lb. buchneri*, Hu et al. [63] observed higher concentrations of acetate using both strains compared to *Lb. buchneri* alone, but the concentration depended on the dry matter content, and overall, no statistical interactions were observed. When comparing the same treatments with a trial on whole plant corn ensiled at 363 g·kg⁻¹ dry matter, the concentrations of acetic acid at 64 days correspond to the level reported by 250 days of incubation in Ferrero et al. [57]. The differences between LB–LH and the Control in both studies is similar.

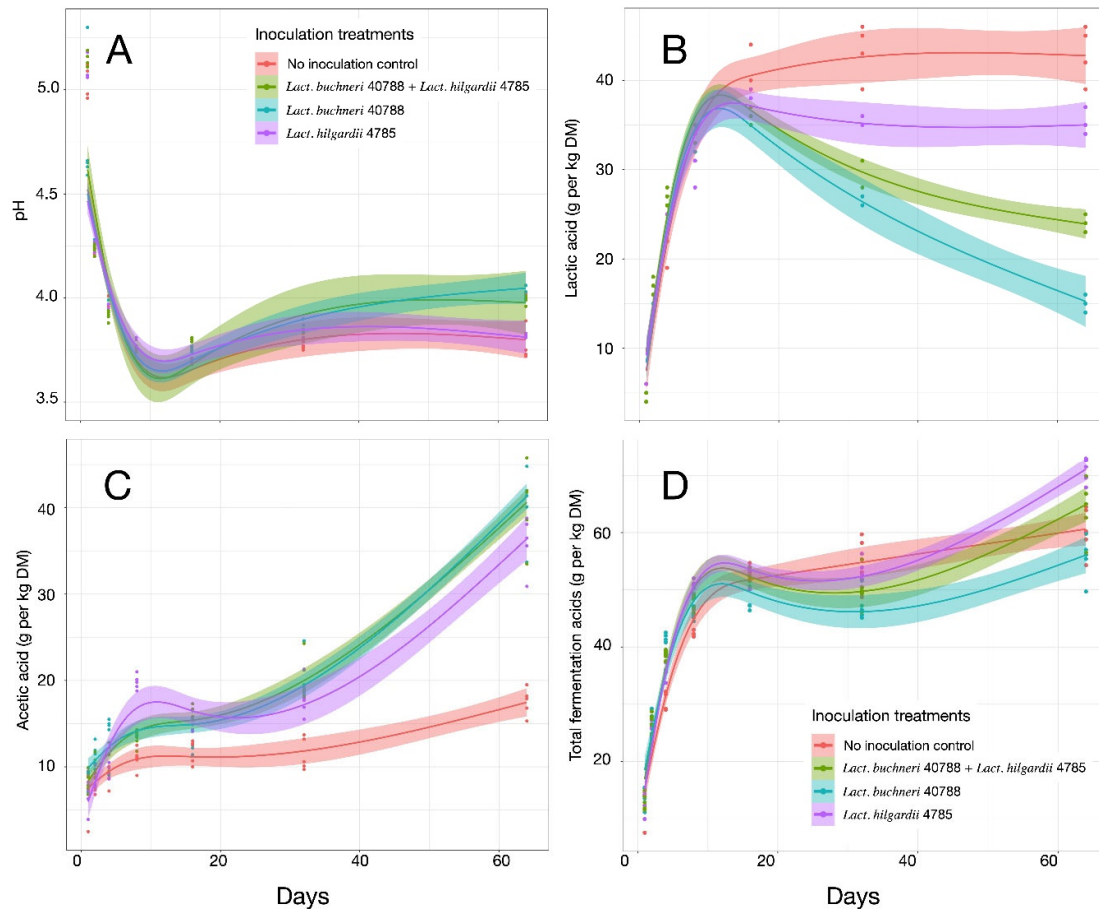


Figure 6. Fermentation kinetics of independent samples of corn silages harvested after 1, 2, 4, 8, 16, 32, and 64 days of fermentation. The following four inoculation treatments were applied: Control, *Lb. buchneri*, *Lb. hilgardii*, and a combination of the two LAB species. The four panels show pH (A), the concentration of lactic acid (B), the concentration of acetic acid (C), and the concentration of total volatile fatty acids (D). The trend lines correspond to a smoothing function computed by linear modelling using the $y\sim ns(x,3)$ equation. The shaded area boarding each trend line represents the 95% confidence interval.

Table 1. Results of the mixed effect model analysis for comparison of the fermentation profiles at all opening periods between the control and the bacterial inoculation treatments.

Treatments	pH ^a	Total VFA ^a	Lactic Acid ^a	Acetic Acid ^a	Ratio Lactate/ (Acetate + EtOH) ^a
Lact. buchneri 40788	0.855	0.972	0.011	<0.001	<0.001
Lact. hilgardii 4785	0.736	0.206	0.410	<0.001	<0.001
Combo LB-LH	0.552	0.396	0.109	<0.001	<0.001

^a Probability of a difference between the bacterial inoculation and the control treatments. VFA, volatile fatty acids.

Analyzing the ratio of lactic acid to acetic acid and ethanol concentrations (LA/(AA + EtOH)) (Figure 7A) gave a more precise picture of the fermentation profiles between the homofermentative and heterofermentative lactic acid bacteria populations [64]. In the Control samples, as mentioned earlier, rapid accumulation of lactic acid was observed, triggering an increase in the LA/(AA + EtOH) ratio, up to 2.67 after 32 days, which differed significantly ($p < 0.001$) from the ratios calculated for the inoculated samples, between 1.05 to 1.58, but were in line with published results [65] for homofermentative populations at that period [66] (Table 1). In Control samples, the ratio started to decrease by day 64, indicating a putative succession of the microbiota toward heterofermentative processes. Interestingly, the LA/AA + EtOH ratio for LB-LH was similar to LB at all time points,

although the concentrations of both lactic and acetic acid were always higher in LB–LH at the later opening. The higher concentration of lactic acid in LB–LH could delay the increase in pH after opening the silage, and thus help preserve silage for a longer period. The evolution of silage after 64 days of fermentation warrants further investigation to confirm this hypothesis.

We noticed that after 64 days of fermentation, bacterial alpha diversity was 61.5 ± 6.6 species in the Control and decreased to 28.3 ± 2.95 in LB–LH samples ($p < 0.001$) (Figure S3). The strong decrease in the number of observed species in silages inoculated with combined LB and LH could be related to the accumulation of organic acids, in particular of lactic and acetic acid whose concentrations increased in those samples. At low pH, an increase in acetic acid could create a stressful environment for most microorganisms, as the higher pK_a of acetic acid (4.76) compared to the pH of the silage allows nearly all acetate to be in its undissociated form [67]. Acetic acid could then easily enter microbial cells, dissociate, and decrease the intracellular pH associated with notable energy expenditure to maintain physiological pH values, eventually killing cells unable to adapt. Although the Control silages reached a pH comparable to that of the treated samples, they had a lower concentration of acetic acid at 64 days of fermentation. This pH would be too low to cause high bacterial and fungal mortality, but as its concentration progressively increased during the course of fermentation in the Control, acetic acid could induce later changes in the microbial population. Our results confirm this hypothesis, since alpha diversity in the Control samples increased from a low of 47.7 ± 3.5 observed species at day 16, while, in the inoculation treatments, it decreased after that period. Therefore, heterofermentative bacterial inoculants offer an effective solution to ensure high levels of acetic acid in silage, thereby improving the stability of the silage.

The synthesis of propionic acid follows a specific pathway, putatively involving other members of the lactic acid bacterial population, i.e., *Lactobacillus diolivorans* [68] or *Lactobacillus reuteri* [69]. A complex of 22 enzymes has been shown to be linked to the degradation of 1,2-propanediol to non-equimolar levels of 1-propanol (reduced) or propionic acid (oxidized), with propionaldehyde as an intermediate in the reaction [70,71]. In the Control silages, concentrations of these three compounds remained below detection levels throughout the 64-day period of the trial (Figure 7).

Conversely, following inoculation, the concentration of 1,2-propanediol increased irrespective of the strain. After 64 days of fermentation, the concentration of 1,2-propanediol continued to increase in LH and LB–LH treated silages, whereas it started to decrease in LB, leading to a significant ($p < 0.001$) difference between treatments at this time. The lower concentration of 1,2-propanediol with LB was possibly due to transformation into propionic acid, whose concentration concomitantly increased (Figure 7D). The production of 1-propanol (Figure 7C) and propionate (Figure 7D) were mostly influenced by the presence of *Lb. buchneri*, and treatments with *Lb. hilgardii* had only a minor influence on this metabolism. The LB–LH treatment produced an intermediate or delayed response. The concentration of propionic acid in LB–LH was only about half that obtained in LB alone after 64 days of fermentation. It is hard to explain why the concentration of propionic acid does not follow the same trend in LB–LH and in LB for both compounds. It can be hypothesized that the transformation of 1,2-propanediol into propionic acid is more efficient in LB following stimulation of specific microbial populations [70,72], a process that occurs to a lesser extent in the LB–LH treated silage.

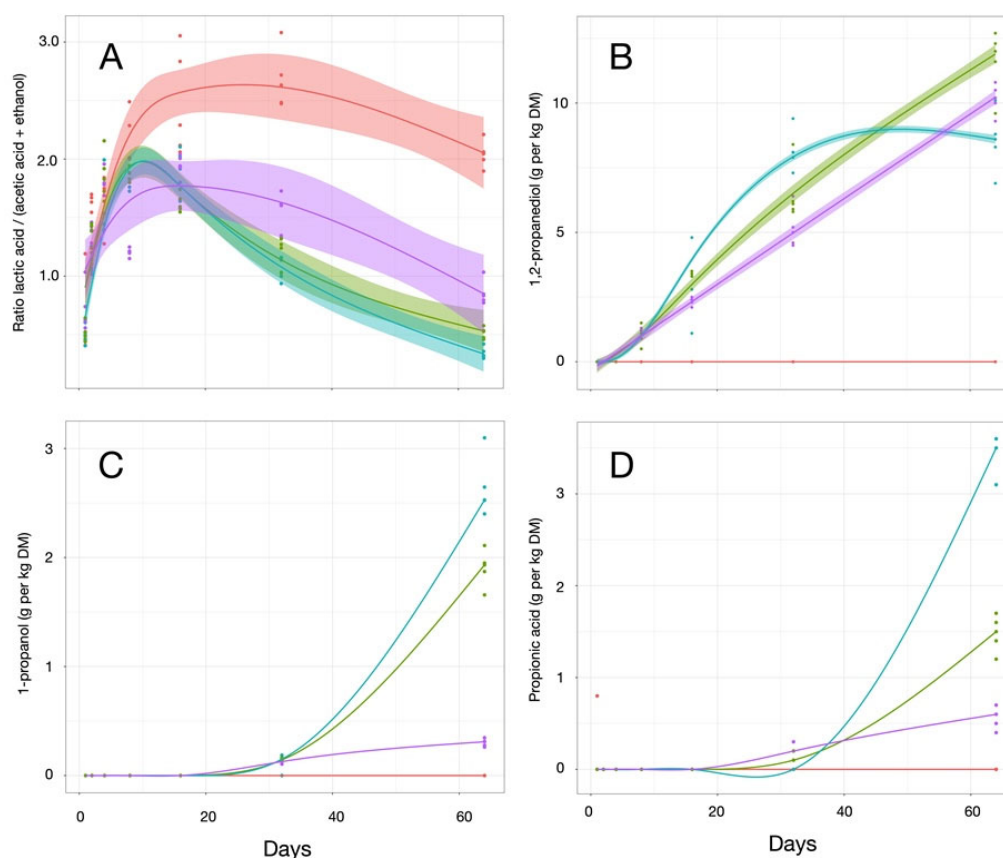


Figure 7. Ratio of the concentration of lactic acid/(acetic acid + ethanol) (A) and propionate metabolic pathway compounds (1,2-propanediol (B), 1-propanol (C), propionic acid (D)) from independent samples of corn silage harvested after 1, 2, 4, 8, 16, 32, and 64 days of fermentation. The following four inoculation treatments were applied: Control, *Lb. buchneri*, *Lb. hilgardii*, and a combination of the two LAB species. The trend lines correspond to a smoothing function computed by linear modelling using the $y \sim ns(x,3)$ equation. The shaded area boarding each trend line represents the 95% confidence interval.

4. Conclusions

Using amplicon metasequencing analysis of the microbial communities over the course of fermentation revealed three distinct community profiles from the 16S amplicons, and two from the ITS amplicons. Differences in lactate and acetate concentrations between treated silages could influence both bacterial and fungal communities, and after 64 days of fermentation, the LB-LH treated silages harbored a distinctive yeast community, with *Hanaella* as the main OTU. In the separate LB and LH inoculated silages, *Diplodascus* occupied this niche, and *Candida* dominated the Control samples. LB-LH also had the lowest alpha diversity level of bacteria, which influenced both bacterial and fungal communities to improve forage preservation and potentially animal performance. The LB-LH combination brings specific changes that are distinct to the sum of their individual impact on the microbial communities.

Significant differences in fermentation profiles were associated with each inoculant, and changes in fungal communities will need further investigation to understand the mechanisms of action of the bacterial inoculants, especially the combination LB-LH.

Supplementary Materials: The following are available online at www.mdpi.com/xxx/s1

Author Contributions: Conceptualization, P.D.; methodology, P.D. and J.T.; formal analysis, P.D.; investigation, P.D.; data curation, P.D. and J.T.; resources, P.D.; writing-original draft preparation, P.D.; writing-review and editing, P.D., J.T. and F.C.-D.; visualization, P.D. and F.C.-D.; project administration, P.D. and F.C.-D.

Funding: This study received funding from Lallemand SAS. Pascal Drouin and Frédérique Chaucheyras-Durand are employed by Lallemand SAS or Lallemand Specialities. This does not alter the author's adherence to all the journal policies on sharing data and materials.

Acknowledgments: We thank the staff of the William H. Miner Institute for their assistance in harvesting the crops and for the use of some laboratory facilities. The authors are also grateful to Mathieu Castex and Emmanuelle Apper for critical reading of the manuscript.

Conflicts of Interest: P.D. and F.C.D. are employees of Lallemand Specialities or Lallemand SAS. The other authors declare that the research was conducted in the absence of any commercial or financial relationships that could be construed as a potential conflict of interest.

References

- Weinberg, Z.G.; Muck, R.E. New trends and opportunities in the development and use of inoculants for silage. *FEMS Microbiol. Rev.* **1996**, *19*, 53–68.
- Basso, F.C.; Adesogan, A.T.; Lara, E.C.; Rabelo, C.H.S.; Berchielli, T.T.; Teixeira, I.A.M.A.; Siqueira, G.R.; Reis, R.A. Effects of feeding corn silage inoculated with microbial additives on the ruminal fermentation, microbial protein yield, and growth performance of lambs. *J. Anim. Sci.* **2014**, *92*, 5640–5650. DOI: 10.2527/jas2014-8258.
- Ellis, J.L.; Hindrichsen, I.K.; Klop, G.; Kinley, R.D.; Milora, N.; Bannink, A.; Dijkstra, J. Effects of lactic acid bacteria silage inoculation on methane emission and productivity of Holstein Friesian dairy cattle. *J. Dairy Sci.* **2016**, *99*, 7159–7174. DOI: 10.3168/jds.2015-10754.
- Ma, Z.X.; Amaro, F.X.; Romero, J.J.; Pereira, O.G.; Jeong, K.C.; Adesogan, A.T. The capacity of silage inoculant bacteria to bind aflatoxin B1 in vitro and in artificially contaminated corn silage. *J. Dairy Sci.* **2017**, *100*, 7198–7210. DOI: 10.3168/jds.2016-12370.
- Oliveira, A.S.; Weinberg, Z.G.; Ogunade, I.M.; Cervantes, A.A.P.; Arriola, K.G.; Jiang, Y.; Kim, D.; Li, X.; Gonçalves, M.C.M.; Vyas, D.; et al. Meta-analysis of effects of inoculation with homofermentative and facultative heterofermentative lactic acid bacteria on silage fermentation, aerobic stability, and the performance of dairy cows. *J. Dairy Sci.* **2017**, *100*, 4587–4603. DOI: <https://doi.org/10.3168/jds.2016-11815>.
- Lin, C.; Brent, B.E.; Bolsen, K.K.; Fung, D.Y.C. Epiphytic lactic acid bacteria succession during the pre-ensiling and ensiling periods of alfalfa and corn. *J. Appl. Bacteriol.* **1992**, *73*, 375–387.
- Pahlow, G.; Muck, R.E.; Driehuis, F.; Oude Elferink, S.J.W.H.; Spoelstra, S.F. Microbiology of ensiling. In *Silage science and technology*. Buxton, D.R.; Muck, R.E.; Harrison, J.H., Eds; American Society of Agronomy: Madison, Wisconsin, WI, USA, 2003. pp. 31–93.
- Bruseti, L.; Borin, S.; Mora, D.; Rizzi, N.; Sorlini, C.; Daffonchio, D. Usefulness of length heterogeneity-PCR for monitoring lactic acid bacteria succession during maize ensiling. *FEMS Microbiol. Ecol.* **2006**, *56*, 154–164.
- Muck, R.E.; Nadeau, E.M.G.; McAllister, T.A.; Contreras-Govea, F.E.; Santos, M.C.; Kung, L.J. Silage Review: Recent advances and future uses of silage additives. *J. Dairy Sci.* **2018**, *101*, 3980–4000. DOI: 10.3168/jds.2017-13839.
- Eikmeyer, F.; Köfinger, P.; Poschenel, A.; Jünemann, S.; Zakrzewski, M.; Heint, S.; Mayrhuber, E.; Grabherr, R.; Pühler, A.; Schwab, H.; et al. Metagenome analyses reveal the influence of the inoculant *Lactobacillus buchneri* CD034 on the microbial community involved in grass ensiling. *Journal of Biotechnology*. **2013**, *167*, 334–343. DOI: 10.1016/j.jbiotec.2013.07.021.
- Carvalho, B.F.; Ávila, C.L.S.; Miguel, M.G.C.P.; Pinto, J.C.; Santos, M.C.; F. S.R. Aerobic stability of sugarcane silage inoculated with tropical strains of lactic acid bacteria. *Grass Forage Sci.* **2014**, *70*, 308–323. DOI: 10.1111/gfs.12117.
- Ávila, C.L.S.; Carvalho, B.F.; Pinto, J.C.; Duarte, W.F.; Schwan, R.F. The use of *Lactobacillus* species as starter cultures for enhancing the quality of sugar cane silage. *J. Dairy Sci.* **2014**, *97*, 940–951. DOI: [Dx.doi.org/10.3168/jds.2013-6987](https://doi.org/10.3168/jds.2013-6987).
- Santos, W.P.; Ávila, C.L.S.; Pereira, M.N.; Schwan, R.F.; Lopes, N.M.; Pinto, J.C. Effect of the inoculation of sugarcane silage with *Lactobacillus hilgardii* and *Lactobacillus buchneri* on feeding behavior and milk yield of dairy cows. *J. Anim. Sci.* **2017**, *95*, 4613–4622. DOI: 10.2527/jas2017.1526.
- Reis, C.B.; de Oliveira dos Santos, A.; Carvalho, B.F.; Schwan, R.F.; da Silva Ávila, C.L. Wild *Lactobacillus hilgardii* (CCMA 0170) strain modifies the fermentation profile and aerobic stability of corn silage. *J. Appl. Anim. Res.* **2018**, *46*, 632–638. DOI: 10.1080/09712119.2017.1371609.

15. Romero, J.J.; Zhao, Y.; Balseca-Paredes, M.A.; Tiezzi, F.; Gutierrez-Rodriguez, E.; Castillo, M.S. Laboratory silo type and inoculation effects on nutritional composition, fermentation, and bacterial and fungal communities of oat silage. *J. Dairy Sci.* **2017**, *100*, 1812–1822. DOI: <https://doi.org/10.3168/jds.2016-11642>.
16. Zhou, Y.; Drouin, P.; Lafrenière, C. Effect of temperature (5–25°C) on epiphytic lactic acid bacteria populations and fermentation of whole-plant corn silage. *J. Appl. Microbiol.* **2016**, *121*, 657–671. DOI: [10.1111/jam.13198](https://doi.org/10.1111/jam.13198).
17. Yergeau, E.; Michel, C.; Tremblay, J.; Niemi, A.; King, T.L.; Wyglinski, J.; Lee, K.; Greer, C.W. Metagenomic survey of the taxonomic and functional microbial communities of seawater and sea ice from the Canadian Arctic. *Sci. Rep.* **2017**, *7*, 42242. DOI: [10.1038/srep42242](https://doi.org/10.1038/srep42242).
18. Tremblay, J.; Singh, K.; Fern, A.; Kirton, E.S.; He, S.; Woyke, T.; Lee, J.; Chen, F.; Dangl, J.L.; Tringe, S.G. Primer and platform effects on 16S rRNA tag sequencing. *Front. Microbiol.* **2015**, *6*, 771. DOI: [10.3389/fmicb.2015.00771](https://doi.org/10.3389/fmicb.2015.00771).
19. Magoč, T.; Salzberg, S.L. FLASH: Fast length adjustment of short reads to improve genome assemblies. *Bioinformatics*. **2011**, *27*, 2957–2963. DOI: [10.1093/bioinformatics/btr507](https://doi.org/10.1093/bioinformatics/btr507).
20. Ghodsi, M.; Liu, B.; Pop, M. DNACLUSt: Accurate and efficient clustering of phylogenetic marker genes. *Bioinformatics*. **2011**, *12*, 271. DOI: <http://www.biomedcentral.com/1471-2105/12/271>.
21. Wang, Q.; Garrity, G.M.; Tiedje, J.M.; Cole, J.R. Naïve Bayesian classifier for rapid assignment of rRNA sequences into the new Bacteria taxonomy. *Appl. Environ. Microbiol.* **2007**, *73*, 5261–5267. DOI: [10.1128/AEM.00062-07](https://doi.org/10.1128/AEM.00062-07).
22. Robinson, M.D.; McCarthy, D.J.; Smyth, G.K. edgeR: A Bioconductor package for differential expression analysis of digital gene expression data. *Bioinformatics*. **2010**, *26*, 139–140. DOI: [10.1093/bioinformatics/btp616](https://doi.org/10.1093/bioinformatics/btp616).
23. McMurdie, P.J.; Holmes, S. Waste not, want not: Why rarefying microbiome data is inadmissible. *PLoS ONE*. **2014**, *10*, e1003531. DOI: [10.1371/journal.pcbi.1003531](https://doi.org/10.1371/journal.pcbi.1003531).
24. DeSantis, T.Z.; Hugenholtz, P.; Larsen, N.; Rojas, M.; Brodie, E.L.; Keller, K.; Huber, T.; Dalevi, D.; Hu, P.; Andersen, G.L. Greengenes, a chimera-checked 16S rRNA gene database and workbench compatible with ARB. *Appl. Environ. Microbiol.* **2006**, *72*, 5069–5072.
25. Price, M.N.; Dehal, P.S.; Arkin, A.P. FastTree 2—Approximately maximum-likelihood trees for large alignments. *PLoS ONE*. **2010**, *5*, e9490. DOI: [10.1371/journal.pone.0009490](https://doi.org/10.1371/journal.pone.0009490).
26. Caporaso, J.G.; Kuczynski, J.; Stombaugh, J.; Bittinger, K.; Bushman, F.D.; Costello, E.K.; Fierer, N.; Peña, A.G.; Goodrich, J.K.; Gordon, J.I.; et al. QIIME allows analysis of high-throughput community sequencing data. *Nature methods*. **2010**, *7*, 335–336. DOI: [10.1038/nmeth.f.303](https://doi.org/10.1038/nmeth.f.303).
27. Kuczynski, J.; Stombaugh, J.; Walters, W.A.; Gonzalez, A.; Caporaso, J.G.; Knight, R. Using QIIME to analyze 16S rRNA gene sequences from Microbial Communities. *Curr. Protoc. Bioinformatics*. **2011**, *36*, 10.7.1–10.7.20. DOI: [10.1002/0471250953.bi1007s36](https://doi.org/10.1002/0471250953.bi1007s36).
28. Crawley, M.J. The R book. 2nd edition. John Wiley & Sons: West Sussex, UK. 2013.
29. Team, R.C. R: A language and environment for statistical computing. R Foundation for Statistical Computing: Vienna, Austria. 2017.
30. Pinheiro, J.; Bates, D.; DebRoy, S.; Sarkar, D.; Team, R.C. nlme: Linear and nonlinear mixed effects models. 2019. R package version 3.1-96. Available online: <https://CRAN-R-project.org/package=nlme> (accessed on 20 November 2019).
31. Chen, Y.; McCarthy, D.; Ritchie, M.; Robinson, M.; Smyth, G.K. edgeR: Differential expression analysis of digital gene expression data. User's guide. Available online: <https://www.bioconductor.org/packages/release/bioc/vignettes/edgeR/inst/doc/edgeRUsersGuide.pdf> (accessed on 20 November 2019).
32. Venables, W.N.; Ripley, B.D. *Modern applied statistics with S*, 4e edition. Springer: New York, NY, USA. 2002. pp., 495.
33. Dunière, L.; Xu, S.; Long, J.; Elekwachi, C.; Wang, Y.; Turkington, K.; Forster, R.; McAllister, T.A. Bacterial and fungal core microbiomes associated with small grain silages during ensiling and aerobic spoilage. *BMC Microbiology*. **2017**, *17*, 50. DOI: [10.1186/s12866-017-0947-0](https://doi.org/10.1186/s12866-017-0947-0).
34. Liu, B.; Huan, H.; Gu, H.; Xu, N.; Shen, Q.; Ding, C. Dynamics of a microbial community during ensiling and upon aerobic exposure in lactic acid bacteria inoculation-treated and untreated barley silages. *Biores. Technol.* **2019**, *273*, 212–219. DOI: [10.1016/j.biortech.2018.10.041](https://doi.org/10.1016/j.biortech.2018.10.041).

35. Gharechahi, J.; Kharazian, Z.A.; Sarikhan, S.; Jouzani, G.S.; Aghdasi, M.; Salekdeh, G.H. The dynamics of the bacterial communities developed in maize silage. *Microb. Biotechnol.* **2017**, *10*, 1663–1676. DOI: 10.1111/1751-7915.12751.
36. McGarvey, J.A.; Franco, R.B.; Palumbo, J.D.; Hnasko, R.; Stanker, L.; Mitloehner, F.M. Bacterial population dynamics during the ensiling of *Medicago sativa* (alfalfa) and subsequent exposure to air. *J. Appl Microbiol.* **2013**, *114*, 1661–1670. DOI: 10.1111/jam.12179.
37. Parvin, S.; Nishino, N. Succession of lactic acid bacteria in wilted rhodesgrass silage assessed by plate culture and denaturing gradient gel electrophoresis. *Grassland. Sci.* **2010**, *56*, 51–55. DOI: 10.1111/j.1744-697X.2009.00173.x.
38. Bolsen, K.K.; Lin, C.; Brent B.E.; Feyerherm, A.M.; Urban, J.E.; Aimutis, W.R. Effect of silage additives on the microbial succession and fermentation process of alfalfa and corn silages. *J. Dairy Sci.* **1992**, *75*, 3066–3083.
39. Keshri, J.; Chen, Y.; Pinto, R.; Kroupitski, Y.; Weinberg, Z.G.; Sela, S. Microbiome dynamics during ensiling of corn with and without *Lactobacillus plantarum* inoculant. *Appl. Microbiol. Biotechnol.* **2018**, *102*, 4025–4037. DOI: 10.1007/s00253-018-8903-y.
40. Li, Y.; Nishino, N. Bacterial and fungal communities of wilted Italian ryegrass silage with and without *Lactobacillus rhamnosus* or *Lactobacillus buchneri*. *Lett. Appl. Microbiol.* **2011**, *52*, 314–321. DOI: 10.1111/j.1472-765X.2010.03000.x.
41. Wu, J.-J.; Du, R.-P.; Gao, M.; Sui, Y.-Q.; Xiu, L.; Wang, X. Naturally occurring lactic acid bacteria isolated from tomato pomace silage. *Asian Australas. J. of Anim. Sci.* **2014**, *27*, 648–657. DOI: <http://dx.doi.org/10.5713/ajas.2013.13670>.
42. Giraffa, G.; Chanishvili, N.; Widyastuti, Y. Importance of lactobacilli in food and feed biotechnology. *Res. in Microbiol.* **2010**, *161*, 480–487. DOI: 10.1016/j.resmic.2010.03.001.
43. Xu, Z.; He, H.; Zhang, S.; Kong, J. Effects of inoculants *Lactobacillus brevis* and *Lactobacillus parafarraginis* on the fermentation characteristics and microbial communities of corn stover silage. *Sci. Rep.* **2017**, *7*, 13614. DOI: 10.1038/s41598-017-14052-1.
44. Hauben, L.; Vauterin, L.; Moore, E.R.B.; Hoste, B.; Swings, J. Genomic diversity of the genus *Stenotrophomonas*. *Int J. Syst. Bacteriol.* **1999**, *49*, 1749–1760.
45. Zhou, T.; Reeleder, R.D. Colonization of bean flowers by *Epicoccum purpurascens*. *Phytopathology.* **1991**, *81*, 774–778.
46. de Gruyter, J.; Woudenberg, J.H.C.; Aveskamp, M.M.; Verkley, G.J.M.; Groenewald, J.Z.; Crous, P.W. Systematic reappraisal of species in *Phoma* section *Paraphoma*, *Pyrenochaeta* and *Pleurophoma*. *Mycologia* **2010**, *102*, 1066–1081. DOI: <http://dx.doi.org/10.3852/09-240>.
47. Giraldo, A.; Gené, J.; Sutton, D.A.; Madrid, H.; de Hoog, G.S.; Cano, J.; Decock, C.; Crous, P.W.; Guarro, J. Phylogeny of *Sarocladium* (*Hypocreales*). *Persoonia.* **2015**, *34*, 10–24. DOI: <http://dx.doi.org/10.3767/003158515X685364>.
48. Santos, M.C.; Golt, C.; Joerger, R.D.; Mechor, G.D.; Mourão, G.B.; Kung, L.J. Identification of the major yeasts isolated from high moisture corn and corn silages in the United States using genetic and biochemical methods. *J. Dairy Sci.* **2017**, *100*, 1151–1160. DOI: <https://doi.org/10.3168/jds.2016-11450>.
49. Middelhoven, W.J.; van Baalen, A.H.M. Development of the yeast flora of whole-crop maize during ensiling and during subsequent aerobiosis. *J. Sci. Food Agric.* **1988**, *42*, 199–207.
50. Mansfield, M.A.; Kulda, G.A. Microbiological and molecular determination of mycobiota in fresh and ensiled maize silage. *Mycologia* **2007**, *99*, 269–278.
51. Alper, I.; Frenette, M.; Labrie, S. Ribosomal DNA polymorphisms in the yeast *Geotrichum candidum*. *Fungal Biology.* **2011**, *115*, 1259–1269.
52. Suló, P.; Laurenčík, M.; Poláková, S.; Minárik, G.; Sláviková, E. *Geotrichum bryndzae* sp. nov., a novel asexual arthroconidial yeast species related to the genus *Galactomyces*. *Int. J. Syst. Evol. Microbiol.* **2009**, *59*, 2370–2374. DOI: 10.1099/ijs.0.008938-0.
53. Mansfield, M.A. Fungi and mycotoxins in fresh and ensiled maize and the affects of agronomic practices weather conditions and silage characteristics on toxin contamination Ph.D. Thesis, Pennsylvania State University, Pennsylvania, PA, December 2005.
54. Larpin, S.; Mondoloni, C.; Goerges, S.; Vernoux, J.-P.; Guéguen, M.; Desmasures, N. *Geotrichum candidum* dominates in yeast population dynamics in Livaro, a french red-smear cheese. *FEMS Yeast Res.* **2006**, *6*, 1243–1253. DOI: 10.1111/j.1567-1364.2006.00127.x.

55. Pottier, I.; Gente, S.; Vernoux, J.-P.; Guéguen, M. Safety assessment of dairy microorganisms: *Geotrichum candidum*. *Int. J. Food Microbiol.* **2008**, *126*, 327–332. DOI: 10.1016/j.ijfoodmicro.2007.08.021.
56. Gallagher, D.; Parker, D.; Allen, D.J.; Tsesmetzis, N. Dynamic bacterial and fungal microbiomes during sweet sorghum ensiling impact bioethanol production. *Biores. Technol.* **2018**, *264*, 163–173. DOI: 10.1016/j.biortech.2018.05.053.
57. Ferrero, F.; Piano, S.; Tabacco, E.; Borreani, G. Effects of conservation period and *Lactobacillus hilgardii* inoculum on the fermentation profile and aerobic stability of whole corn and sorghum silages. *J. Sci. Food Agric.* **2019**, *99*, 2530–2540. DOI: 10.1002/jsfa.9463.
58. Kung, L.J.; Taylor, C.C.; Lynch, M.P.; Neylon, J.M. The effect of treating alfalfa with *Lactobacillus buchneri* 40788 on silage fermentation, aerobic stability, and nutritive value for lactating dairy cows. *J. Dairy Sci.* **2003**, *86*, 336–343.
59. van de Guchte, M.; Serror, P.; Chervaux, C.; Smokvina, T.; Ehrlich, S.D.; Maguin, E. Stress responses in lactic acid bacteria. *Antonie van Leeuwenhoek*. **2002**, *82*, 187–216.
60. Pot, B.; Felis, G.E.; De Bruyne, K.; Tsakalidou, E.; Papadimitriou, K.; Leisner, J.; Vandamme, P. The genus *Lactobacillus*. In *Lactic acid bacteria: Biodiversity and taxonomy*. Holzapfel, W.H.; Wood, B.J.B., Eds; John Wiley & Sons: Oxford, UK, 2014. pp., 249–353.
61. Oude Elferink, S.J.W.H.; Krooneman, J.; Gottschal, J.C.; Spoelstra, S.F.; Faber, F.; Driehuis, F. Anaerobic conversion of lactic acid to acetic acid and 1,2-propanediol by *Lactobacillus buchneri*. *Appl. Environ. Microbiol.* **2001**, *67*, 125–132. DOI: 10.1128/AEM.67.1.125–132.2001.
62. Kung Jr., L.; Shaver, R.D.; Grant, R.J.; Schmidt, R. J. Silage Review: Interpretation of Chemical, Microbial, and Organoleptic Components of Silages. *J. Dairy Sci.* **2018**, *101*, 4020–4033. <https://doi.org/10.3168/jds.2017-13909>.
63. Hu, W.; Schmidt, R.J.; McDonell, E.E.; Klingerman, C.M.; Kung, L.J. The effect of *Lactobacillus buchneri* 40788 or *Lactobacillus plantarum* MTD-1 on the fermentation and aerobic stability of corn silages ensiled at two dry matter contents. *J. Dairy Sci.* **2009**, *92*, 3907–3914. DOI: 10.3168/jds.2008-1788.
64. Kandler, O. Carbohydrate metabolism in lactic acid bacteria. *Antonie van Leeuwenhoek*. **1983**, *49*, 209–224.
65. Filya, I.; Sucu, E. The effects of lactic acid bacteria on the fermentation, aerobic stability and nutritive value of maize silage. *Grass Forage Sci.* **2010**, *65*, 446–455. DOI: 10.1111/j.1365-2494.2010.00763.x.
66. Schmidt, R.J.; Kung, L.J. The effect of *Lactobacillus buchneri* with or without a homolactic bacterium on the fermentation and aerobic stability of corn silages made at different locations. *J. Dairy Sci.* **2010**, *93*, 1616–1624. DOI: 10.3168/jds.2009-2555.
67. Russell, J.B.; Diez-Gonzalez, F. The effects of fermentation acids on bacterial growth. *Adv. Microb. Physiol.* **1997**, *39*, 205–234.
68. Krooneman, J.; Faber, F.; Alderkamp, A.C.; Oude Elferink, S.J.W.H.; Driehuis, F.; Cleenwerck, I.; Swings, J.; Gottschal, J.C.; Vancanneyt, M. *Lactobacillus diolivorans* sp. nov., a 1,2-propanediol-degrading bacterium isolated from aerobically stable maize silage. *Int. J. Syst. Evol. Microbiol.* **2002**, *52*, 639–646. DOI: 10.1099/ijs.0.01979-0.
69. Amin, H.M.; Hashem, A.M.; Ashour, M.S.; Hatti-Kaul, R. 1,2 propanediol utilization by *Lactobacillus reuteri* DSM 20016, role in bioconversion of glycerol to 1,3 propanediol, 3-hydroxypropionaldehyde and 3-hydroxypropionic acid. *J. Gen. Engin. Biotechnol.* **2013**, *11*, 53–59. DOI: [Dx.doi.org/10.1016/j.jgeb.2012.12.002](https://doi.org/10.1016/j.jgeb.2012.12.002).
70. Sriramulu, D.D.; Liang, M.; Hernandez-Romero, D.; Raux-Deery, E.; Lünsdorf, H.; Parsons, J.B.; Warren, M.J.; Prentice, M.B. *Lactobacillus reuteri* DSM 20016 produces cobalamin-dependent diol dehydratase in metabosomes and metabolizes 1,2-propanediol by disproportionation. *J. Bacteriol.* **2008**, *190*, 4559–4567. DOI: 10.1128/JB.01535-07.
71. Cheng, S.; Sinha, S.; Fan, C.; Liu, Y.; Bobik, T.A. Genetic analysis of the protein shell of the microcompartments involved in coenzyme B12-dependent 1,2-propanediol degradation by *Salmonella*. *J. Bacteriol.* **2011**, *193*, 1385–1392. DOI: 10.1128/JB.01473-10.
72. Zielińska, K.; Fabiszewska, A.; Świątek, M.; Szymanowska-Powalowska, D. Evaluation of the ability to metabolize 1,2-propanediol by heterofermentative bacteria of the genus *Lactobacillus*. *Elec. J. Biotechnol.* **2017**, *26*, 60–63. DOI: 10.1016/j.ejbt.2017.01.002.





Supplementary Materials

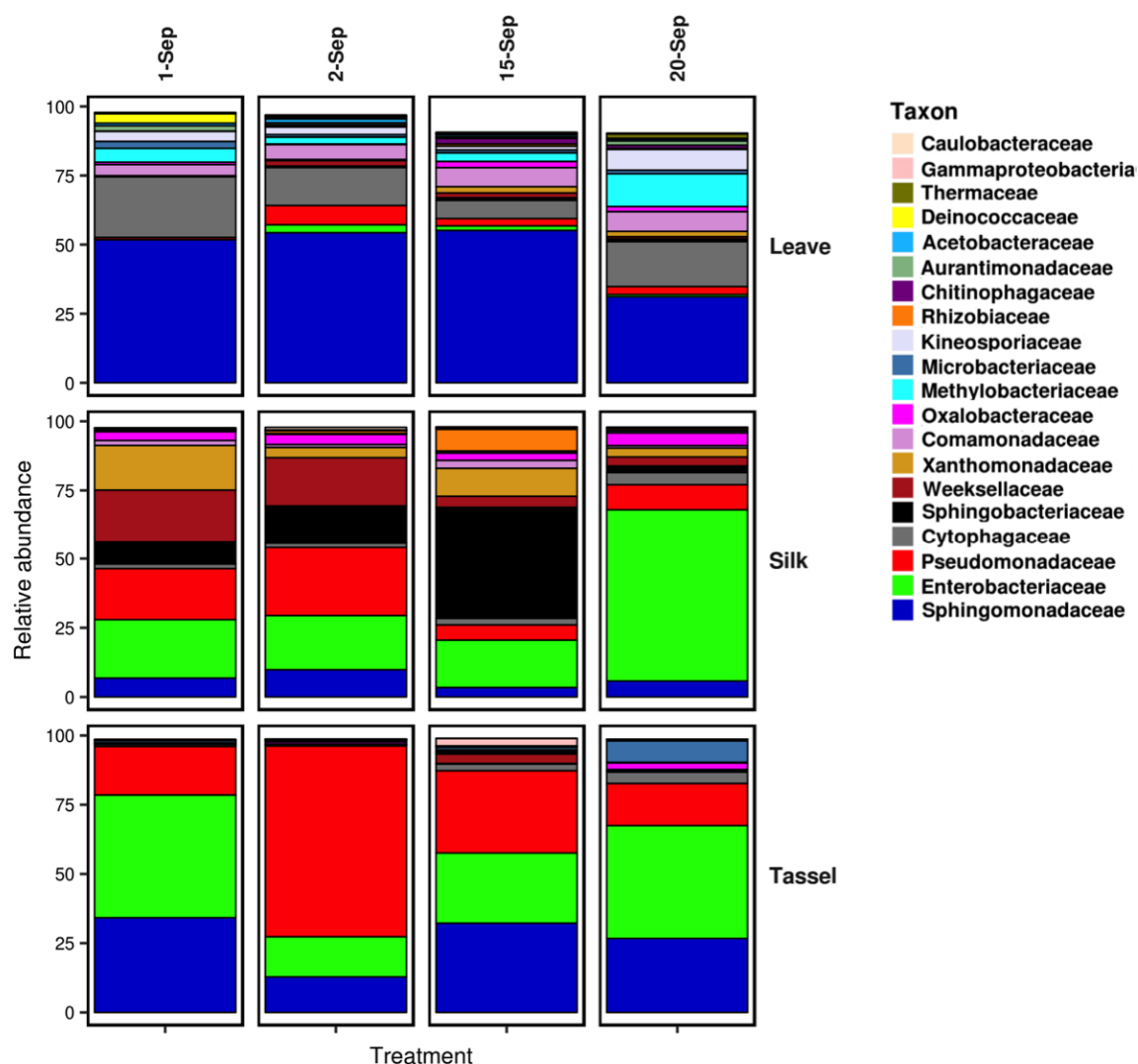


Figure S1. 16S Amplicon metasequencing diversity profile of corn at four sampling periods in the month preceding harvest. Colour coding of relative abundance data is at the family level. The DNA of individual samples of leaves, silk plus a few terminal kernels, and tassels extracted and sequenced individually. Main weather details: it rained on the day preceding 1-Sept. sampling; all the other days preceding sampling were sunny.



Figure 2 consists of four panels (A, B, C, D) showing the temporal dynamics of bacterial communities. Panels A and C display Richness - Observed OTUs, while B and D display the Shannon diversity index. The x-axis for all panels represents Time (days), with categories: Fresh, 1, 2, 4, 8, 16, 32, and 64. The legend indicates four groups: Control (red), LB (green), LH (cyan), and LB-LH (purple).

- Panel A (16S amplicons):** Richness - Observed OTUs. The y-axis ranges from 30 to 80. A 'Fresh' inset shows a higher richness (approx. 60-70). The LB-LH group shows the highest richness, peaking at day 4 (approx. 75).
- Panel B (16S amplicons):** Shannon diversity index. The y-axis ranges from 1 to 6. The LB-LH group shows the highest diversity, peaking at day 4 (approx. 5.5).
- Panel C (ITS amplicons):** Richness - Observed OTUs. The y-axis ranges from 40 to 100. The LB-LH group shows the highest richness, peaking at day 16 (approx. 100).
- Panel D (ITS amplicons):** Shannon diversity index. The y-axis ranges from 3 to 5. The LB-LH group shows the highest diversity, peaking at day 16 (approx. 4.8).

Figure S3. Changes in alpha diversity parameters, Shannon Index and Observed Species, in relation to time of fermentation for the 16S and the ITS amplicons for the four treatments.

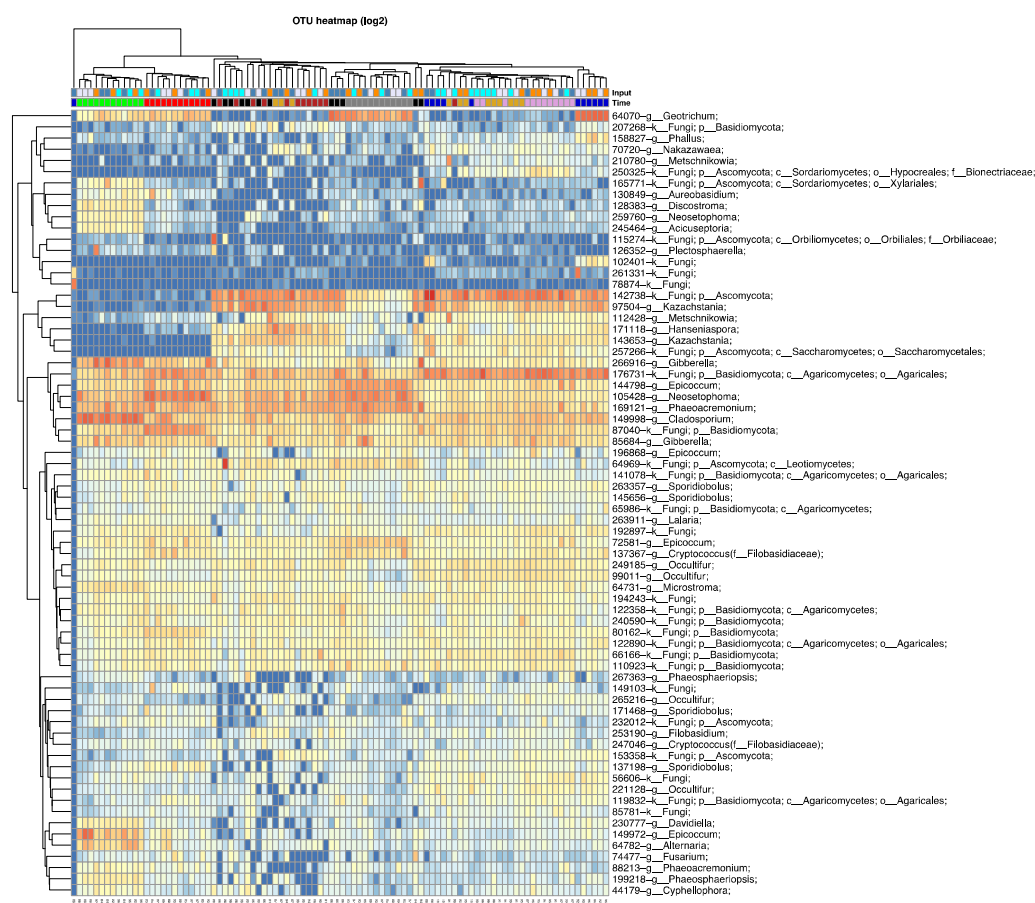


Figure S4. Heatmap and cladogram of the samples for the ITS amplicon metasequencing data from corn silages inoculated with four inoculation treatments and eight fermentation periods, ranging from fresh to 64 days of ensiling. Color scale represents the log₂ transformation of the CPM (count per million reads).

Table S1. Table identifying the three main OTUs that increased and the three that decreased between inoculation versus Control (LB-LH over Control, LB over Control, and LH over Control) of whole plant corn silage. Taxonomic identification was performed using the contrast results (EdgeR package) following a BLASTn search.

Table S1. Taxonomic identification (BLASTn against NCBI GenBank database) of the three top OTU showing highest increase and highest decrease following results by a contrast analysis of the bacteria population after inoculation with LB, LH, or LB-LH against the control treatment, by individual opening period.

Day(s)	Treatments		LB over control		LH over control	
	LB-LH over control	Higher in control	Higher in control	Higher with inoculation	Higher in control	Higher with inoculation
1	None	LHLD LF (4.20) ¹	<i>Lactobacillus brevis</i> (-2.93) <i>Lactobacillus plantarum</i> (-2.89) <i>Pediococcus pentosaceus</i> (-2.81)	Uncultured bacterium (4.67)	None	LHLD LF (4.00)
2	None	<i>Lactobacillus buchneri</i> (5.64) <i>Lactobacillus buchneri</i> (4.04) LHLD LF (3.47)	<i>Lactobacillus pentosiphilus</i> (-2.93) <i>Lactobacillus sharpae</i> (-2.83) <i>Lactobacillus parabravis</i> (-2.63)	<i>Lactobacillus buchneri</i> (3.92) LHLD LF (1.62)	<i>Leuconostoc fallax</i> (-2.63)	LHLD LF (3.22) <i>Lactobacillus buchneri</i> (3.09)
4	<i>Leuconostoc pseudomesenteroides</i> (-4.78) ¹ <i>Pediococcus acidilactici</i> (-4.61) ¹ <i>Lactobacillus</i> (uncultured) (-4.23)	<i>Lactobacillus buchneri</i> (6.82) <i>Lactobacillus buchneri</i> (4.08) <i>Flavobacterium</i> sp. (3.39)	<i>Pediococcus acidilactici</i> (-3.36) <i>Weissella confusa</i> (-3.09) <i>Lactobacillus plantarum</i> (-3.09)	<i>Lactobacillus buchneri</i> (6.58) <i>Lactobacillus buchneri</i> (3.95) <i>Flavobacterium plicatulum</i> (3.93)	Uncultured <i>Lactobacillus</i> (-4.02) <i>Pediococcus acidilactici</i> (-3.88) <i>Lactobacillus parabravis</i> (-3.80)	<i>Lactobacillus buchneri</i> (4.83) <i>Lactobacillus buchneri</i> (4.50) <i>Lactobacillus buchneri</i> (3.73)
8	<i>Lactobacillus pentosiphilus</i> (-2.38) <i>Burkholderia gladioli</i> (-2.30) <i>Lactobacillus brevis</i> (-1.69)	<i>Lactobacillus buchneri</i> (5.08) <i>Lactobacillus buchneri</i> (4.51) Uncultured bacterium (2.89)	<i>Lactobacillus brevis</i> (-3.39) <i>Lactobacillus pentosiphilus</i> (-3.03) <i>Lactobacillus brevis</i> (-2.52)	<i>Lactobacillus buchneri</i> (4.96) <i>Lactobacillus buchneri</i> (4.42) <i>Hafnia</i> sp. (1.94)	None	<i>Lactobacillus buchneri</i> (4.92) <i>Lactobacillus buchneri</i> (4.57) LHLD LF (2.80)
16	<i>Lactobacillus brevis</i> (-2.14)	<i>Lactobacillus buchneri</i> (5.64) <i>Lactobacillus buchneri</i> (4.04) LHLD LF (3.47)	<i>Spiromonas radiotolerans</i> (-3.95) <i>Lactobacillus pentosiphilus</i> (-2.30) <i>Pediococcus pentosaceus</i> (-2.15)	<i>Lactobacillus buchneri</i> (7.49) <i>Lactobacillus buchneri</i> (6.58) LHLD LF (3.52)	None	<i>Lactobacillus buchneri</i> (6.73) <i>Lactobacillus buchneri</i> (6.07) LHLD LF (3.78)
32	<i>Siphonobacter</i> sp. (-4.23) <i>Lactobacillus brevis</i> (-4.16) <i>Xanthobacter autotrophicus</i> (-3.99)	<i>Lactobacillus buchneri</i> (7.52) <i>Lactobacillus buchneri</i> (5.84) LHLD LF (5.41)	<i>Lactobacillus pentosiphilus</i> (-3.37) <i>Spiromonas radiotolerans</i> (-2.65) <i>Lactobacillus plantarum</i> (-1.94)	<i>Lactobacillus buchneri</i> (8.45) <i>Lactobacillus buchneri</i> (6.80) LHLD LF (6.25)	<i>Hymenobacter</i> sp. (-3.39) <i>Lactobacillus brevis</i> (-2.97) <i>Spiromonas roseiflama</i> (-2.54)	<i>Lactobacillus buchneri</i> (6.67) <i>Lactobacillus buchneri</i> (6.43) LHLD LF (6.32)
64	<i>Bacillus pumilus</i> (-8.69) <i>Lactobacillus pentosiphilus</i> (-5.56) <i>Leuconostoc lactis</i> (-5.32)	LHLD LF (2.73) <i>Lactobacillus helveticus</i> (2.12) <i>Lactobacillus buchneri</i> (1.97)	<i>Bacillus pumilus</i> (-8.69) <i>Lactobacillus pentosiphilus</i> (-5.51) <i>Leuconostoc lactis</i> (-5.31)	<i>Lactobacillus nigrivivus</i> (5.73) <i>Pediococcus damnosus</i> (3.22) <i>Lactobacillus harbinensis</i> (3.16)	<i>Bacillus pumilus</i> (-8.69) <i>Lactobacillus pentosiphilus</i> (-5.85) <i>Leuconostoc lactis</i> (-4.94)	LHLD LF (3.69) <i>Lactobacillus helveticus</i> (3.56)

1. Values in parenthesis represent the logFC (fold change) generated by the contrast analysis performed using the EdgeR package. Negative numbers represent OTU more present in the control samples.

2. Taxonomic identification represents the main identify level of the top 10 to 20 results of the BLASTn search.

3. LHLD LF OTU were identical between *Lactobacillus hilgardii*, *Lactobacillus diolivorans*, and *Lactobacillus faraginis* sequences.

Table S2. Table identifying the four main OTUs that increased and the four that decreased between fermentation periods in the Control, LB, LH, and LB-LH treatments of whole plant corn silage. Taxonomic identification was performed using the contrast results (EdgeR package) following a BLASTn search. In addition to the RDP classifier (methods), OTU taxonomy was further characterized by BLASTing them against NCBI GenBank general nucleotide collection database (nr/nt). Considering the small size of individual OTU, taxonomic identification was good with identical hits showing 100% identity with most of the top 20 hits.

Table S2. Taxonomic identification (BLASTn against NCBI GenBank database) of the four top OTU showing highest increase and highest decrease following results by a contrast analysis of the bacteria population for the four treatments (Control, LB, LH, and combo LB-LH) compared between one opening period and the previous one.

DAY	LB-LH		LB	
	Decrease	Increase	Decrease	Increase
1 over fresh	<i>Acinetobacter baylyi</i> (-4.37) ¹ <i>Chryseobacterium</i> sp. (-4.19) <i>Herbaspirillum chlorophenolicum</i> (-3.90) <i>Luteibacter rhizovicinus</i> (-3.75)	<i>Weissella confusa</i> ² (10.83) <i>Lactococcus lactis</i> (9.40) <i>Pediococcus pentosaceus</i> (8.23) <i>Leuconostoc mesenteroides</i> (7.88)	<i>Hymenobacter</i> sp. (-7.09) <i>Spirosoma radiotolerans</i> (-6.50) <i>Spingomonas</i> sp. (-6.50) <i>Brevundimonas</i> sp. (-6.40)	<i>Weissella confusa</i> (10.91) <i>Lactococcus lactis</i> (8.72) <i>Leuconostoc mesenteroides</i> (7.00) <i>Pediococcus pentosaceus</i> (6.63)
2 over 1	<i>Sphingobacterium</i> sp. (-1.90) <i>Chryseobacterium</i> (-1.74) <i>Pediococcus pentosaceus</i> (-1.68)	<i>Lactobacillus brevis</i> (4.74) <i>Lactobacillus buchneri</i> (3.64) <i>Lactobacillus pentosiphilus</i> (3.34) LH LD LF ³ (3.04)	<i>Spingobacteria</i> (uncultured) (-5.15)	<i>Lactobacillus brevis</i> (5.48) LH LD LF (5.01) <i>Lactobacillus buchneri</i> (4.55) <i>Leuconostoc citreum</i> (2.98)
4 over 2	<i>Leuconostoc pseudomesenteroides</i> (-4.09) <i>Weissella confusa</i> (-3.80) Uncultured <i>Lactobacillus</i> (-3.53) <i>Weissella cibaria</i> (-3.49)	Uncultured (<i>Spingobacterium</i>) (5.31) <i>Flavobacterium johnsoniae</i> (5.02) <i>Lactobacillus plantarum</i> (4.06) <i>Lactobacillus crustorum</i>	<i>Weissella confusa</i> (-3.50) <i>Weissella confusa</i> (-3.15) <i>Weissella</i> sp. (-3.05) <i>Weissella cibaria</i> (-2.97)	<i>Xanthomonas</i> sp. (5.30) <i>Pseudoxanthomonas mexicana</i> (5.29) <i>Flavobacterium johnsoniae</i> (5.27) <i>Sodalis</i> sp. (4.90)
8 over 4	<i>Xanthomonas</i> sp. (-3.50) <i>Leuconostoc citreum</i> (-3.24) <i>Pseudomonas</i> sp. (-2.19) <i>Lactococcus lactis</i> (-2.04)	None	<i>Leuconostoc pseudomesenteroides</i> (-3.16) <i>Leuconostoc citreum</i> (-2.61)	None
16 over 8	<i>Leuconostoc citreum</i> (-2.70) <i>Lactococcus lactis</i> (-2.65) <i>Pediococcus pentosaceus</i> (-2.12) <i>Leuconostoc pseudomesenteroides</i> (-2.03)	<i>Lactobacillus buchneri</i> (1.74)	None	None
32 over 16	<i>Hafnia alvei</i> (-2.98) <i>Kluyvera georgiana</i> (-2.55) <i>Variovorax</i> sp. (-2.26) <i>Enterobacter</i> sp. (-2.25)	LH LD LF (2.20) Uncultured (1.79) <i>Lactobacillus buchneri</i> (1.56)	None	<i>Lactobacillus acetotolerans</i> (7.02) LH LD LF (3.15) <i>Lactobacillus pentosiphilus</i> (2.45)
64 over 32	<i>Lactobacillus plantarum</i> (-3.08) <i>Lactobacillus plantarum</i> (-2.61) <i>Lactobacillus buchneri</i> (-2.43) <i>Lactobacillus pentosiphilus</i> (-2.26)	<i>Lactobacillus acetotolerans</i> (9.52) <i>Lactobacillus helveticus</i> (4.73) <i>Lactobacillus brevis</i> (3.51) <i>Lactobacillus pentosiphilus</i> (3.22)	<i>Leuconostoc citreum</i> (-3.59) <i>Weissella confusa</i> (-3.02) <i>Leuconostoc</i> sp. (-3.02) <i>Leuconostoc citreum</i> (-2.95)	<i>Lactobacillus ingluvi</i> (5.74) <i>Lactobacillus acetotolerans</i> (4.90) <i>Lactobacillus helveticus</i> (4.85) <i>Lactobacillus brevis</i> (4.61)

DAY	LH		CONTROL	
	Decrease	Increase	Decrease	Increase
1 over fresh	<i>Luteibacter rhizovicinus</i> (-9.29) <i>Flavobacterium</i> sp. (-8.97) <i>Dyadobacter</i> sp. (-8.17) <i>Spingobacterium</i> sp. (-7.54)	<i>Weissella confusa</i> (10.37) <i>Lactococcus lactis</i> (9.23) <i>Pediococcus pentosaceus</i> (8.32) <i>Leuconostoc mesenteroides</i> (7.30)	<i>Flavobacterium akiatvivens</i> (-6.88) <i>Chryseobacterium</i> sp. (-5.59) Uncultured <i>Flavobacterium</i> (-5.24) <i>Flavobacterium psychrophilum</i> (-5.20)	<i>Weissella confusa</i> (11.49) <i>Lactococcus lactis</i> (9.97) <i>Leuconostoc mesenteroides</i> (8.73) <i>Pediococcus pentosaceus</i> (8.50)
2 over 1	None	<i>Lactobacillus brevis</i> (5.62) <i>Lactobacillus pentosiphilus</i> (3.56) LH LD LF (2.98) <i>Lactobacillus buchneri</i> (2.53)	<i>Siphonobacter</i> sp. (-3.40) <i>Agrobacterium tumefaciens</i> (-2.81)	<i>Lactobacillus brevis</i> (5.14) <i>Lactobacillus pentosiphilus</i> (4.13) LH LD LF (3.73) <i>Lactobacillus crustorum</i> (3.54)
4 over 2	<i>Lactobacillus plantarum</i> (-3.54) <i>Leuconostoc</i> sp. (-3.18) <i>Weissella confusa</i> (-3.11) <i>Leuconostoc pseudomesenteroides</i> (-3.08)	<i>Luteibacter rhizovicinus</i> (6.02) <i>Lactobacillus plantarum</i> (4.65) <i>Spingomonas faeni</i> (4.64) <i>Duganeella</i> sp. (3.92)	None	<i>Lactobacillus plantarum</i> (4.06) <i>Lactobacillus plantarum</i> (3.94) <i>Lactobacillus pentosiphilus</i> (3.40) Uncultured <i>Lactobacillus</i> (3.35)
8 over 4	<i>Xanthomonas</i> sp. (-3.26) <i>Leuconostoc citreum</i> (-2.98) <i>Leuconostoc pseudomesenteroides</i> (-1.91)	<i>Lactobacillus plantarum</i> (1.67)	<i>Leuconostoc pseudomesenteroides</i> (-5.12) <i>Leuconostoc citreum</i> (-5.05) <i>Lactobacillus plantarum</i> (-3.81) <i>Weissella confusa</i> (-3.72)	<i>Lactobacillus plantarum</i> (1.96) <i>Lactobacillus sharpeae</i> (1.91)
16 over 8	<i>Lysobacter firmicuttimachus</i> (-3.54) <i>Lactococcus lactis</i> (-3.41) <i>Lactobacillus sharpeae</i> (-3.18) <i>Herbaspirillum chlorophenolicum</i> (-3.11)	None	None	None
32 over 16	None	Uncultured bacterium (3.14) LH LD LF (2.96) <i>Leuconostoc citreum</i> (2.45) <i>Leuconostoc citreum</i> (2.38)	<i>Lactobacillus sharpeae</i> (-2.66)	None
64 over 32	<i>Lactobacillus pentosiphilus</i> (-3.98) <i>Lactobacillus plantarum</i> (-3.89) Uncultured <i>Lactobacillus</i> (-3.58) <i>Lactobacillus buchneri</i> (-3.45)	<i>Lactobacillus acetotolerans</i> (8.98) <i>Lactobacillus helveticus</i> (4.25)	None	<i>Lactobacillus acetotolerans</i> (10.51) <i>Bacillus aerius</i> (8.27) <i>Lactobacillus buchneri</i> (5.98) <i>Lactobacillus helveticus</i> (5.20)

1. Values in parenthesis represent the logFC (Fold Change) generated by the contrast analysis performed using the EdgeR package of R. Negative numbers represent OTU more present in the previous opening.

2. Taxonomic identification represents the main identity level observed in the top 10 to 20 results of the BLASTn search.

3. LH LD LF OTU provided similar results between *Lactobacillus hilgardii*, *Lactobacillus diolivorans*, and *Lactobacillus farraginis* sequences in the database.

