



**HAL**  
open science

## Alterations in phenotype and gene expression of adult human aneurysmal smooth muscle cells by exogenous nitric oxide

Kurt Farrell, Phillip Simmers, Gautam Mahajan, Ludovic Boytard, Andrew Camardo, Jyotsna Joshi, Anand Ramamurthi, Florence Pinet, Chandrasekhar R Kothapalli

### ► To cite this version:

Kurt Farrell, Phillip Simmers, Gautam Mahajan, Ludovic Boytard, Andrew Camardo, et al.. Alterations in phenotype and gene expression of adult human aneurysmal smooth muscle cells by exogenous nitric oxide. *Experimental Cell Research*, 2019, 384 (1), pp.111589. 10.1016/j.yexcr.2019.111589 . hal-02346682

**HAL Id: hal-02346682**

**<https://hal.science/hal-02346682>**

Submitted on 8 Nov 2019

**HAL** is a multi-disciplinary open access archive for the deposit and dissemination of scientific research documents, whether they are published or not. The documents may come from teaching and research institutions in France or abroad, or from public or private research centers.

L'archive ouverte pluridisciplinaire **HAL**, est destinée au dépôt et à la diffusion de documents scientifiques de niveau recherche, publiés ou non, émanant des établissements d'enseignement et de recherche français ou étrangers, des laboratoires publics ou privés.

## Manuscript Details

<b>Manuscript number</b>	NOX_2019_65
<b>Title</b>	Improvement of altered phenotype and genotype of adult human aneurysmal smooth muscle cells by exogenous nitric oxide
<b>Article type</b>	Research Paper

### Abstract

Abdominal aortic aneurysms (AAA) are characterized by matrix remodeling, elastin degradation, absence of nitric oxide (NO) signaling, and inflammation, influencing smooth muscle cell (SMC) phenotype and genotype. Little is known about the biomolecular release and intrinsic biomechanics of human AAA-SMCs. NO delivery could be an attractive therapeutic strategy to restore lost functionality of AAA-SMCs by inhibiting inflammation and cell stiffening. We aim to establish the differences in phenotype and genotype of adult human AAA-SMCs from healthy SMCs. Based on our previous study which showed benefits of optimal NO dosage delivered via S-Nitrosoglutathione (GSNO) to healthy aortic SMCs, we tested whether such benefits would occur in AAA-SMCs. The mRNA expression of three genes involved in matrix degradation (ACE, ADAMTS5 and ADAMTS8) was significantly downregulated in AAA-SMCs. Total protein and glycosaminoglycans synthesis were higher in AAA-SMCs than healthy-SMCs and was enhanced by GSNO and 3D cultures. Elastin gene expression, synthesis and deposition, desmosine crosslinker levels, and lysyl oxidase (LOX) functional activity were lower, while cell proliferation, iNOS, LOX and fibrillin-1 gene expressions were higher in AAA-SMCs, with differential benefits from GSNO exposure. GSNO and 3D cultures reduced MMPs -2, -9, and increased TIMP-1 release in AAA-SMC cultures. AAA-SMCs were inherently stiffer and had smoother surface than healthy SMCs, but GSNO reduced stiffness (~25%) and increased roughness of both cell types. In conclusion, exogenously-delivered NO offers an attractive strategy by providing therapeutic benefits to AAA-SMCs.

**Keywords** abdominal aortic aneurysm; elastin; matrix proteins; cell modulus; MMPs; nitric oxide; LILAS study;

**Manuscript category** Cardiovascular

**Corresponding Author** Chandrasekhar R Kothapalli

**Corresponding Author's Institution** Cleveland State University

**Order of Authors** Kurt Farrell, Phillip Simmers, Gautam Mahajan, Ludovic Boytard, Andrew Camardo, Jyotsna Joshi, Anand Ramamurthi, Florence Pinet, Chandrasekhar R Kothapalli

## Submission Files Included in this PDF

### File Name [File Type]

Cover Letter.pdf [Cover Letter]

Manuscript.docx [Manuscript File]

To view all the submission files, including those not included in the PDF, click on the manuscript title on your EVISE Homepage, then click 'Download zip file'.



# Washkewicz College of Engineering

CHEMICAL AND BIOMEDICAL ENGINEERING DEPARTMENT

March 19, 2019

To,  
Prof. Neil Hogg, Editor-in-Chief  
Medical College of Wisconsin

Dear Prof. Hogg,

We hereby submit our manuscript titled, "***Improvement of altered phenotype and genotype of adult human aneurysmal smooth muscle cells by exogenous nitric oxide***" to be considered for publication in *the Nitric Oxide* journal as an original full-length article. All authors have read and agreed with the submission of the manuscript to this journal. This manuscript hasn't been submitted or published elsewhere, either in part or in full.

**Novelty of this work:** It is known that the pathogenesis of aortic aneurysms leads to extracellular matrix degradation in blood vessels and disruption of vascular smooth muscle cell (SMC) interactions with endothelium and medial elastic fibers. In this work, we report for the first time, on the basal amounts of numerous matrix proteins synthesized and released by aortic aneurysmal SMCs derived from LILAS (Lille Aneurysmal Study in France) patients, changes in their phenotype and genotype, the cytokines/ chemokines/ growth factors they release, and their intrinsic biophysical characteristics (cell stiffness and surface roughness). In addition, we compared such outcomes from aneurysmal cells to SMCs derived from healthy humans. Finally, we report on the benefits of delivering exogenous nitric oxide cues to restore some of these lost biophysical and biochemical functionalities in aortic aneurysmal SMCs.

The outcomes from our study are relevant to not only understand the disease etiology but also develop effective NO delivery based pharmacological, tissue engineering and regenerative medicine strategies to repair and regenerate faithful mimics of elastic fibers in aneurysmal blood vessels. The results would be of great interest and utility to researchers working on vascular biology, translational medicine, nitric oxide signaling, cellular mechanics, and clinical studies.

Please find enclosed the manuscript, tables, figures, and supplemental figures. We believe that this work is highly suitable for publication in this journal. If you need anything else in this regard, please let us know.

Thanking you for your time.



# Washkewicz College of Engineering

CHEMICAL AND BIOMEDICAL ENGINEERING DEPARTMENT

With Regards,

Sincerely,

*Chandrasekhar K.R.*

Chandra Kothapalli, Ph.D.  
Associate Professor

Tel: 216-687-2562

Email: [c.kothapalli@csuohio.edu](mailto:c.kothapalli@csuohio.edu)

## **Improvement of altered phenotype and genotype of adult human aneurysmal smooth muscle cells by exogenous nitric oxide**

Kurt Farrell<sup>a,¥,#</sup>, Phillip Simmers<sup>a,#</sup>, Gautam Mahajan<sup>a,#</sup>, Ludovic Boytard<sup>b</sup>, Andrew Camardo<sup>c</sup>, Jyotsna Joshi<sup>a</sup>, Anand Ramamurthi<sup>c</sup>, Florence Pinet<sup>b</sup>, Chandrasekhar R. Kothapalli<sup>a,\*</sup>

<sup>a</sup> Department of Chemical and Biomedical Engineering, Cleveland State University, Cleveland, OH 44141, USA

<sup>b</sup> University of Lille, Inserm U1167, Institut Pasteur de Lille, France

<sup>c</sup> Department of Biomedical Engineering, Cleveland Clinic, Cleveland, OH 44141, USA

¥ Current address: Department of Pathology, Department of Neuroscience, Icahn School of Medicine at Mount Sinai, New York, NY, USA

# equal contribution

**Short Title: Benefits of exogenous NO to human aneurysmal SMCs**

**\*Corresponding author:** Chemical and Biomedical Engineering, 2121 Euclid Ave., Washkewicz College of Engineering, Cleveland State University, Cleveland, OH 44115; Email: c.kothapalli@csuohio.edu; Tel: 1-216-687-2562; Fax: 1-216-687-9220.

## **Abstract**

Abdominal aortic aneurysms (AAA) are characterized by matrix remodeling, elastin degradation, absence of nitric oxide (NO) signaling, and inflammation, influencing smooth muscle cell (SMC) phenotype and genotype. Little is known about the biomolecular release and intrinsic biomechanics of human AAA-SMCs. NO delivery could be an attractive therapeutic strategy to restore lost functionality of AAA-SMCs by inhibiting inflammation and cell stiffening. We aim to establish the differences in phenotype and genotype of adult human AAA-SMCs from healthy SMCs. Based on our previous study which showed benefits of optimal NO dosage delivered *via* S-Nitrosoglutathione (GSNO) to healthy aortic SMCs, we tested whether such benefits would occur in AAA-SMCs. The mRNA expression of three genes involved in matrix degradation (ACE, ADAMTS5 and ADAMTS8) was significantly downregulated in AAA-SMCs. Total protein and glycosaminoglycans synthesis were higher in AAA-SMCs than healthy-SMCs and was enhanced by GSNO and 3D cultures. Elastin gene expression, synthesis and deposition, desmosine crosslinker levels, and lysyl oxidase (LOX) functional activity were lower, while cell proliferation, iNOS, LOX and fibrillin-1 gene expressions were higher in AAA-SMCs, with differential benefits from GSNO exposure. GSNO and 3D cultures reduced MMPs -2, -9, and increased TIMP-1 release in AAA-SMC cultures. AAA-SMCs were inherently stiffer and had smoother surface than healthy SMCs, but GSNO reduced stiffness (~25%) and increased roughness of both cell types. In conclusion, exogenously-delivered NO offers an attractive strategy by providing therapeutic benefits to AAA-SMCs.

**Key Words:** abdominal aortic aneurysm, elastin, matrix proteins, cell modulus, MMPs, nitric oxide, LILAS study

## 1. Introduction

Chronic vascular pathological conditions (e.g., hypertension, atherosclerosis, trauma, infection) promote localized release of proteinases and enzymes which break down the intact extracellular matrix (ECM; e.g., elastin, glycosaminoglycans (GAGs)) within the adult abdominal aortic walls [1; 2]. Unfortunately, the major cell types in aorta, *i.e.*, smooth muscle cells (SMCs) and adventitial fibroblasts, are limited in their ability to repair, replace or regenerate the degraded vascular matrix, which often results in progressive weakening and burgeoning of blood vessel diameter (> 50% increase relative to healthy vessel) – a condition clinically termed as abdominal aortic aneurysm (AAA). AAAs are also typically characterized by the presence of innate and adaptive immune cells (e.g., macrophages, T-cells, neutrophils, lymphocytes) which release abnormal levels of cytokines and matrix metalloproteinases (MMPs) to exacerbate the breakdown of elastic fibers and other matrix proteins [3; 4]. This, in turn, disrupts the signaling between elastic fibers and SMCs, promotes SMC apoptosis, and weakens elasticity in blood vessel walls, to permanently alter the mechanical properties and native microenvironment of the vessel wall [5; 6].

Among the major ECM components native to blood vessels, collagen, GAGs and elastin play an important role in regulating cell adhesion, anchoring, proliferation, and migration [4; 7]. They also regulate blood vessel homeostasis by supporting axial and circumferential loadings and conferring anti-thrombogenic properties [8]. These ECM molecules are synthesized, crosslinked, and deposited as mature matrix fibers by SMCs and adventitial fibroblasts within the aorta. While the turnover of collagens and GAGs is maintained even through adolescence, elastic matrix fiber deposition primarily occurs only during developmental stages and preserved throughout the adult life (elastin half-life is ~74 years) [9]. Since healthy elastic fibers play critical biochemical and biomechanical roles in maintaining vessel homeostasis, abnormalities in elastin

formation due to genetic defects or elastin degradation due to diseases could result in peptides formation, which invalidates the beneficial role of intact elastic fibers [10; 11].

Given the limitations of existing surgical (e.g., endovascular aneurysm repair, open surgery), pharmacological (e.g., anti-inflammation agents, beta-blockers, statins) and preservation (e.g., MMPs inhibition, TIMPs delivery, elastases suppression) interventions for comprehensive AAA treatment [9; 12; 13; 14; 15], ECM (specifically elastin) repair and regeneration approaches focusing on tissue-engineered grafts, stem cells, 3D scaffolds, bimolecular cues, biomechanics, and their combinations, are being explored [16; 17]. We have recently reported on the benefits of delivering exogenous nitric oxide (NO) cues via S-nitrosoglutathione (GSNO), to cell proliferation and ECM deposition by adult human aortic SMCs (Hu-SMCs) within 3D biomimetic cocultures with adult human endothelial cells (Hu-ECs) [18]. While the phenotype and genotype of ECM proteins synthesized by healthy Hu-SMCs has been reported [19; 20; 21; 22], similar outcomes from their AAA-counterparts are unknown. Specifically, the baseline levels of matrix proteins synthesized and deposited by human AAA-SMCs, changes in their phenotype and genotype, the cytokines and chemokines released, their stiffness levels, and the responses to exogenous biomolecular cues, remains unexplored. Such information is critical for understanding the disease etiology and identify effective pharmacological, tissue engineering and regenerative medicine strategies to repair and regenerate elastin in AAA vessels.

In this study, we first investigated the changes in transcription levels of AAA-SMC genes, involved in the pathological progression of this disease. Next, we assessed the *in vitro* baseline levels of cell proliferation, phenotypic and genotypic expression, ECM and biomolecular (elastin, sulfated glycosaminoglycans (sGAGs), hyaluronan (HA), LOX, desmosine, inducible nitric oxide synthase - iNOS) synthesis and deposition, release of cytokines/ chemokines/ MMPs/ TIMPs, and biomechanical characteristics of human AAA-SMCs. Similar outcomes from healthy Hu-SMCs were assessed under identical culture conditions for comparison. Finally, the response of



AAA-SMCs to exogenously-delivered NO cues was evaluated and compared to their healthy counterparts, to establish the utility of delivering exogenous NO for AAA treatment.

## **2. Materials and Methods**

### **2.1. Population study**

LILAS was a case-control study that enrolled 42 men, some with AAA, who needed a vascular surgery or endovascular treatment at the Lille University Hospital Centre (Lille, France) between September 2003 and July 2005 [23]. Case patients were considered eligible if the AAA diameter, measured by abdominal ultrasound exceeded 50 mm, or if it had increased more than 10 mm during the past six months and required initial surgical treatment. The study conformed to the principles outlined in the Declaration of Helsinki, ethics committee of the Lille University Hospital Centre (France) approved the study, and each patient provided written informed consent. Clinical data items were presented as mean  $\pm$  SD, and frequencies with proportions as appropriate. Statistical significance was assigned at  $p < 0.05$ .

### **2.2. Isolation of human AAA-SMCs**

Aortic samples (**Fig. 1A**) were obtained for 20 of the 24 AAA patients and SMCs were isolated from all the 20 AAA tissue samples. Individual cultures of AAA-SMCs were established for each patient by dissection of a residual segment of abdominal aorta and then cutting out the media into 1-2 cu.mm pieces and culturing them on type 1 collagen coated dishes (rat tail-derived, BD Biosciences, France) in medium 231 supplemented with smooth muscle growth supplement (Cascade Biologics, France) and antibiotics (50  $\mu$ g/mL streptomycin, 50 U/mL penicillin; Sigma-Aldrich). SMCs were characterized by western blot analysis. Twenty microgram fractions of cell lysates were separated by SDS-PAGE (9% polyacrylamide), transferred to Hybond C membranes (GE Healthcare, France) and blotted with antibodies against  $\alpha$ -smooth muscle actin ( $\alpha$ -SMA) (1A4, Dako, 1:5000), fibronectin (E3A, Sigma-Aldrich,

1:3000), and vinculin/ meta-vinculin (hVIN-1, Sigma-Aldrich, 1:400). The blots were subsequently washed in PBS-Tween 20 and incubated with appropriate secondary antibodies (peroxidase-conjugated anti-mouse IgG, GE Healthcare) at a dilution of 1:5000. The blots were then washed three times in PBS-Tween 20 for 15 min, incubated with enhanced chemiluminescence reagents (GE Healthcare), and exposed to a radiographic film scanned with an Imagescanner® (GE Healthcare). AAA-SMCs were subsequently passaged with Medium 231 (Life Technologies).

### **2.3. Transcriptomic analysis of human AAA-SMCs**

Changes in SMCs were validated for selected genes with qRT-PCR. RNA samples isolated from SMCs were converted to cDNA with an *in vitro* transcription reaction. We used cDNA as templates for Taqman qRT-PCR with ABI Assays-on-Demand on an ABI Prism 7900 sequence detection system. The specific assays were designed by TaqMan® Gene Expression Assays (Applied Biosystems) and used Hs 00199841-m1 (ADAMTS 5), Hs 00199836-m1 (ADAMTS 8), Hs 00166915-m1 (renin), Hs 00174179-m1 (ACE1), and Hs 00377632-m1 (L-cathepsin). All samples were run in triplicate, with GAPDH (Hs99999905\_m1) and Cyclophilin A (Hs99999904\_m1) as internal controls to normalize transcript abundance ( $2^{-\Delta\Delta Ct}$  method). Triplicates were averaged to calculate an expression value for each sample.

### **2.4. Human AAA and healthy aortic SMC cultures**

AAA-SMCs derived from one patient (details in **Table 1**) were investigated further using biochemical and biomechanical analysis to establish the baseline. Healthy adult Hu-SMCs isolated from a 16-year old male were obtained from Life Technologies Corp. (Carlsbad, CA, USA) and passaged using Medium 231 (ThermoFisher Scientific, USA). For experiments in this study, cells from passages 3-5 for healthy cells and 2-3 for AAA cells were used. AAA-SMCs were cultured on 2D collagen-coated (50 µg/mL) substrates or within 3D collagen hydrogels (2 mg/mL; pH ~ 7.2). Results from 2D substrates will help establish the baseline values, while

cultures in 3D gels will provide more physiological-mimic microenvironment. Cells were cultured for 21 days in SMC media, containing 100 nM GSNO (Sigma, Saint-Louis, MO, USA), a NO donor. Control cultures received no GSNO (termed 0 nM). Healthy and AAA-derived SMCs were imaged at random locations during passaging using a Zeiss Axiovert A1 fluorescence microscope equipped with Hamamatsu camera and image acquisition software. At least ten images per cell type were processed using ImageJ (NIH) to quantify the perimeter and area of each cell type.

**Table 1.** Baseline characteristics of the study population in AAA group. AAA: aortic abdominal aneurysm; CAD: coronary artery disease; MI: myocardial infarction; ACS: acute coronary syndrome; PTCA: percutaneous transluminal coronary angioplasty. Data expressed as mean  $\pm$  SD, where appropriate.

	<b>AAA (n = 24)</b>
Age, years	68.0 $\pm$ 6.1
Male gender, %	24 (100)
Anthropometric data,	
Weight, kg	82.9 $\pm$ 11.6
Height, cm	173.8 $\pm$ 5.4
Body mass index, kg/m <sup>2</sup>	27.4 $\pm$ 3.7
Cardiovascular risk factors, n (%)	
Current smoking	4 (17)
Past smoking	17 (71)
Hypercholesterolemia	14 (58)
Hypertension	15 (63)
Diabetes mellitus	4 (17)
Familial history of CAD	4 (17)
Personal history of CAD, n (%) Stable	
Angina,	2 (8)
MI or ACS,	7 (29)
Coronary artery bypass,	1 (4)
PTCA,	4 (17)
History of stroke, n (%)	0

Two sets of cultures were performed in parallel. 3D collagen gels were prepared by mixing collagen stock solution (type 1, rat-tail derived, BD Biosciences, Bedford, MA, USA) with a mixture of 10 $\times$  PBS, 1 M NaOH and deionized water. For 3D cultures, SMCs were mixed in

collagen gels at a density of  $10^4$  cells per well in 48-well plates. The cultures were placed in a humidified incubator (37 °C, 30 min) to polymerize the collagen gels. For 2D cultures, collagen-coated 24-well tissue culture plastic plates were seeded with  $10^4$  cells per well. GSNO dose used in this study was identified from our previous study [18] where a range of GSNO doses were tested to evaluate their effects on ECM synthesis and deposition. Media was changed once every two days and the spent medium was pooled over the 21-day culture and stored at -20 °C for further biochemical analyses. Similarly, cell matrix layers at the end of 21 days were trypsinized and processed for biochemical assays.

### **2.5. Biochemical assays**

At the end of 21 days, the amounts of various protein types released into the pooled media or deposited within cell matrix of 2D and 3D cultures were quantified as detailed earlier [18]. Individual biochemical assays were performed on AAA-SMC cultures to quantify total protein (BCA Kit Assay; Sigma-Aldrich), elastin (Fastin assay; Accurate Scientific Corp, Westbury, NY), sulfated glycosaminoglycans (sGAGs; Kamiya Biomedical Company, Seattle, WA), and HA (hyaluronan enzyme-linked immunosorbent quantitative assay; Echelon Biosciences Inc., Salt Lake City, UT) amounts. For BCA assay, the protein amounts within cells was not separated from the total protein quantified within cell layers. However, the protein content in 2 mg/mL collagen gels (3D cultures) and collagen-coated 2D cultures was quantified (without cells) using this assay and deducted from the protein amounts reported in test cases. Although other proteins such as collagens might be released and deposited by SMCs, their amounts were not assessed here. SMC proliferation was quantified using a fluorometric assay detailed earlier [18], to quantify the amount of DNA synthesized over the 21 days. Similarly, LOX functional activity was quantified using a fluorometric assay (AmplexRed® Assay; Molecular Probes, Eugene, OR).

### **2.6. Desmosine bioassay**

The amount of desmosine produced and released by AAA-SMCs and healthy SMCs into the pooled media was quantified using a sandwich enzyme immunoassay technique (Human Desmosine ELISA Kit; MyBioSource, Inc., San Diego, CA). The desmosine bioassay has a detection range of 0.1-10 ng/mL and a sensitivity of 0.039 ng/mL. Briefly, aliquots of samples and standards were incubated in a 48-strip-well pre-coated with desmosine-specific antibody, and the bound desmosine was serially-tagged with biotin-conjugated DES-specific antibody and avidin-conjugated horseradish peroxidase, with intermediate washings after every step. Finally, desmosine amounts in each sample were assessed calorimetrically based on the intensity of color generated within a substrate solution in proportion to the respective DES amounts.

### **2.7. Real-time PCR analysis of SMCs**

For RT-PCR analysis, AAA-SMCs and healthy SMCs were cultured in parallel on 2D collagen-coated substrates or within 3D collagen gels and exposed to 100 nM GSNO for 5 days to induce changes in gene expression, and GSNO-free cultures served as controls. Total RNA was extracted from SMCs using RNAqueous®-Micro total RNA isolation kit (Life technologies) according to the manufacturer's instructions. The RNA concentration of each sample was determined using a NanoDrop ND-1000 spectrophotometer (Thermo Scientific, Wilmington, DE). The RNA was reverse-transcribed to cDNA using the high-capacity cDNA reverse transcription kit with RNase inhibitor (Life Technologies) according to manufacturer's instructions. Gene expression in SMCs was quantified using TaqMan® gene expression assays (Applied Biosystems), and TaqMan® Gene expression master mix for each target using the ABI 7500 Real-time PCR System (Applied Biosystems, Forest City CA) limited to only 40 cycles. The following genes were analyzed: lysyl oxidase (LOX, Assay ID: Hs00942480\_m1), elastin (ELN, Assay ID: Hs00355783\_m1), fibrillin 1 (FBN1, Assay ID: Hs00171191\_m1), and inducible nitric oxide synthase 2 (NOS2, Assay ID: Hs01075529\_m1). To identify relative differences in the levels of target genes, gene expression in AAA-SMCs was normalized to endogenous

reference gene (18S, Assay ID: 4319413E) and further to corresponding expression in healthy SMCs, using the  $\Delta\Delta\text{Ct}$  method.

## **2.8. Cytokine/ Chemokine assays**

Cytokine, chemokine, TIMP and MMP analyses were performed using Discovery Assays® (Eve Technologies, Alberta Canada), from 2D or 3D cultures of AAA-SMCs and healthy SMCs. Briefly, cell culture supernatants were collected from each well after 24 h, spun down at 3000 *g* for 5 min, and stored at -20 °C. The supernatants were then processed using multiplexing LASER bead technology and processed on a dual-laser flow-cytometry system (Bio-Plex 200). The technology works by utilizing different combinations of red and infrared fluorophore beads conjugated to specific antibodies targeted to the cytokine or chemokine of choice and read using a flow-cytometry based system. The quantity of the specific analyte generated was based off a series of standards set forth by the company. The assays performed include human focused 11-plex, human MMP 9-plex and TIMP 4-plex, to quantify the following analytes: GM-CSF, IFN- $\gamma$ , IL-1 $\beta$ , IL-2, IL-4, IL-6, IL-8, IL-10, IL-12 (p70), MCP-1, TNF- $\alpha$ , MMPs-1, 2, 3, 7, 8, 9, 10, 12, 13, and TIMPs-2, 3, 4.

## **2.9. Western blot analysis of iNOS**

iNOS expression within healthy and AAA-SMCs, in both 2D and 3D cultures, in the presence or absence of GSNO, was semi-quantitatively evaluated using western blot analysis [18]. To optimize loading sample volumes for SDS/PAGE western blot, cell pellets from respective cultures were assayed using a DC protein assay kit (Bio-Rad Labs). The protein bands were detected using a primary polyclonal antibody for the iNOS protein (Abcam), visualized using chemiluminescence method and quantified using ImageJ.

## **2.10. TIMP-1 assay**

TIMP-1 amounts released by healthy and AAA-SMCs into the pooled media, in the presence or absence of GSNO, were quantified using Human TIMP-1 Quantikine ELISA Kit (R&D Systems, Minneapolis, MN). Spent media (supernates) from the cell cultures in 2D or 3D were pooled and stored at -20 °C, and loaded onto a 96-well polystyrene microplate coated with a monoclonal antibody specific for human TIMP-1. Post-incubation (2 h, RT) on a horizontal orbital shaker, the bound proteins were incubated with human TIMP-1 specific horseradish peroxidase-linked polyclonal antibody (1 h, RT), exposed to a chromogen solution containing tetramethylbenzidine for (30 min, RT, dark), and the reaction was stopped with 2 N sulfuric acid. Final solutions were measured using Epoch BioTek microplate spectrophotometer with absorbance at 450 nm. This assay has a range of 0.2-10 ng/mL in supernatant solutions, with a sensitivity of 0.08 ng/mL.

### ***2.11. Immunofluorescence labeling of cell layers***

AAA-SMCs were cultured on glass chamber slides (10<sup>4</sup> cells/well) for 21 days in the presence or absence of 100 nM GSNO, and the cell layers were fixed in cold methanol, washed with PBS, blocked with PBS containing 5% v/v goat serum (ThermoFisher Scientific) and immunolabeled with rabbit anti-human polyclonal antibodies against elastin (1:100 v/v dilution, Abcam), fibrillin-1 (1:100 v/v dilution, Bioss Antibodies), fibulin-4 (1:100 v/v dilution, Santa Cruz Biotechnology), and fibulin-5 (1:100 v/v dilution, Santa Cruz Biotechnology). Cell layers were washed with PBS and labeled with Alexafluor 633 goat anti-rabbit secondary antibody; 1:1000 dilution, ThermoFisher Scientific). The cell layers were washed with PBS and mounted with Vectashield containing the nuclear stain 4',6-Diamidino-2-Phenylindole, Dihydrochloride (DAPI; Vector Laboratories, Burlingame, CA). AAA-SMC layers treated with the secondary probe alone (no primary antibody) served as negative controls. Cell layers were imaged with a Leica SP8 confocal microscope (Leica Microsystems Inc, Buffalo Grove, IL).

### ***2.12. Atomic force microscopy (AFM) analysis of cell stiffness and roughness***

Healthy and AAA-SMCs were cultured in 35-mm laminin-coated petri dishes and maintained at 37 °C throughout live-cell nanoindentation assay, over a 60-min experiment each time, performed using a MFP-3D-Bio AFM (Asylum Research, Santa Barbara, CA) mounted on an inverted optical microscope (Nikon Eclipse Ti). Tip-less AFM cantilevers (model Arrow TL 1, Nano World, nominal spring constant  $\sim 0.03$  N/m) were modified by attaching a 4.5  $\mu\text{m}$  polystyrene bead using epoxy [24]. The spherical bead indenter reduces the possibility of destructive deformation of cell due to smaller local strains applied [25], compensates for the x-y drift (usually  $< 1$   $\mu\text{m}$ ), and yields higher spatially-averaged measurement with minimal variability, relative to conventional sharp-tip probes. The actual spring constant was determined from a force-distance curve and using thermal calibration method in a clean culture dish containing DMEM. Drifting minimization and thermal/mechanical equilibrium of AFM was achieved by submerging probe in cell medium for stabilization. For each experiment, at least 30 cells were randomly selected, indented between nuclei and cell edges, and 150-200 force curves were obtained per cell in force-volume mode, at a rate of 0.25 Hz with approach/ retraction velocity of 2.5  $\mu\text{m/s}$ . Using Hertz's contact model [ $F = (4E\sqrt{R\delta^3})/3(1 - \mu^2)$ ], Young's modulus was determined from these force curves, where  $F$  is the indentation force,  $E$  is the Young's modulus,  $\mu$  is the Poisson's ratio (0.5 for cells),  $R$  is radius of spherical bead attached to cantilever and  $\delta$  is the indentation depth (300–400 nm) [25]. The analysis of force-indentation curves was automated using Igor Pro 6.37 software. The indentation data was analyzed assuming cells behave as linear elastic at small strain regimes. The mean elastic modulus values were calculated for each cell from the elastic modulus heat maps generated over randomly-selected  $90 \times 90$   $\mu\text{m}^2$  area, and then averaged across multiple cells for each culture condition group. From this data, the mean surface roughness (Ra) of each cell - characterized as the arithmetic mean of the deviations in height from the line mean value, and the root mean square (Rq), were calculated [26]. Both Ra and Rq were obtained from randomly selected areas ( $30 \times 30$   $\mu\text{m}^2$ ) on



the cell membrane. A two-tailed Student's t-test was applied to all the pairs of samples (untreated-treated cells) for statistical analysis and  $p < 0.05$  were considered significant.

### **2.13. Statistical analysis**

All biochemical data were obtained from three independent repeat experiments per case (n = 3 wells/ case/ experiment) and analyzed using one-way ANOVA followed by Tukey's HSD post-hoc testing, assuming unequal variance and differences deemed significant for  $p < 0.05$ . The data were assumed to follow a near-Gaussian distribution in all the cases, and the mean and standard errors were calculated accordingly.

## **3. Results**

### **3.1. Patients**

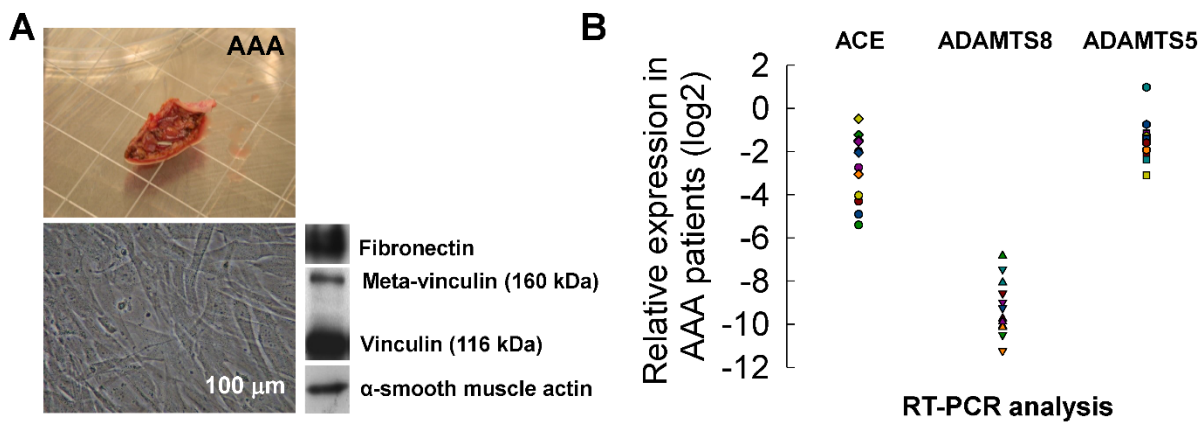
**Table 1** summarizes the baseline characteristics of the 42 AAA subjects. One-third of the AAA patients had hypertension, half had dyslipidemia, 17% had diabetes mellitus, and 29% had family members who had a history of heart disease (myocardial infarction and/or acute coronary syndrome). The AAA case patients (n=24) had a mean maximal external aortic diameter of  $56.1 \pm 11.3$  mm (range: 46-95 mm). Fewer AAA patients received ACE inhibitor treatment (21% vs. 44%). None of the AAA patients took non-steroidal anti-inflammatory drugs (NSAIDs).

### **3.2. Primary AAA-SMC cultures**

SMCs migrated from AAA explants after 10 days and reached confluence in one month. All the cultured AAA-SMCs had the same elongated, spindle-shaped morphology, and at confluence all cultures assumed a hill-and-valley pattern that was maintained throughout subcultures (**Fig. 1A**). Protein expression profiles determined by western blot analysis (**Fig. 1A**) showed that all the cultures from patient groups expressed  $\alpha$ -SMA, vinculin and meta-vinculin, indicating the presence of differentiated SMCs. Fibronectin, a component of basement

membrane, was also expressed indicating a proliferative and secretory SMC phenotype. RT-PCR analysis (**Fig. 1B**) indicated that mRNA expression of three genes appeared to be significantly down-regulated in SMCs from AAA patients: ACE (angiotensin converting enzyme), ADAMTS 5 and ADAMTS 8. The plots of individual mRNA expression for these three genes (normalized to house-keeping genes) shows the variability, with ADAMTS8 being the most suppressed.

**Figure 1**



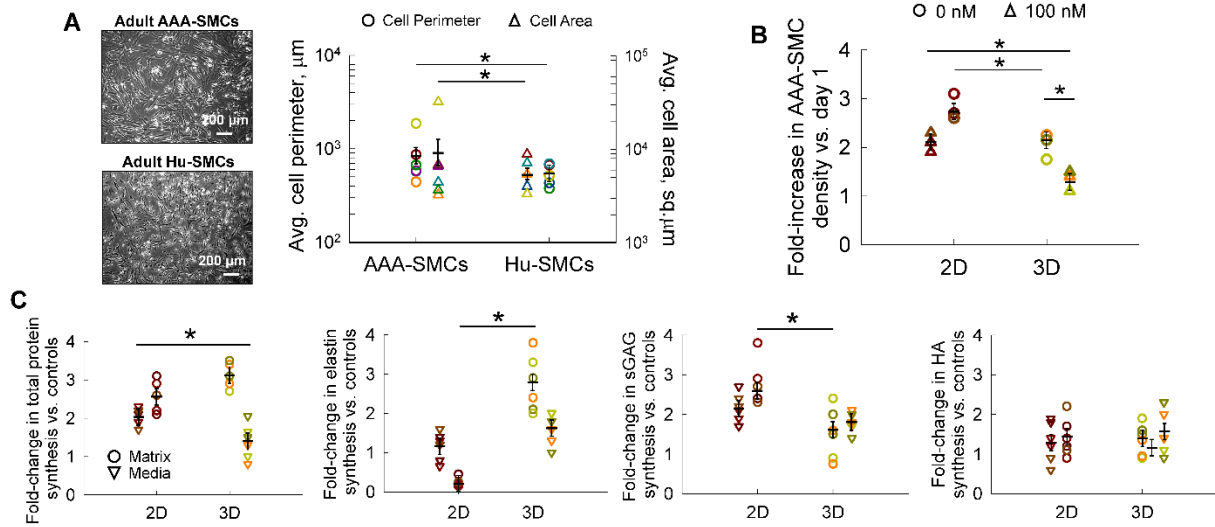
**Figure 1. (A)** A sample AAA tissue ( $n = 20$  patients) used for SMC cultures. Representative phase-contrast microscopy of SMCs obtained by explant from human AAA biopsies. Western blot analysis of SMC for fibronectin, meta-vinculin (160 kDa), vinculin (116 kDa) and  $\alpha$ -smooth muscle actin ( $\alpha$ -SMA). Scale bar: 100  $\mu$ m. **(B)** mRNA expression ratio of genes ( $2^{-dCt}$ ; normalized to house-keeping genes) in SMCs derived from AAA ( $n = 12$ ) patients, potentially involved in matrix degrading processes in AAA, as determined by RT-PCR.

### 3.3. AAA-SMC proliferation and dimensions

Despite similar morphologies within 2D cultures, the area and perimeter of AAA-SMCs within 2D cultures were significantly higher compared to their healthy counterparts (**Fig. 2A**;  $52 < n < 79$ ;  $p < 0.01$  in both cases). The phenotype of AAA-SMCs was confirmed by staining for  $\alpha$ -actin in monolayer cultures, with more than 98% positive-stained cells. In general, AAA-SMC proliferation is significantly lower in 3D gels compared to their 2D counterparts (**Fig. 2B**).

Addition of GSNO significantly suppressed SMC proliferation in 3D gels with a trend in 2D counterparts.

**Figure 2**



**Figure 2.** (A) Representative phase-contrast images of adult healthy Hu-SMCs and AAA-SMCs cultured in this study. Significant differences in average cell area and perimeter were noted between the two cell types. Data shown represents mean  $\pm$  standard error in respective cases. Scale bar: 200  $\mu\text{m}$ . (B) Fold increase in AAA-SMC density within 2D (black histograms) and 3D (white histograms) cultures, in the presence or absence of exogenous 100 nM GSNO. Data shown represents mean  $\pm$  standard error of cell count after 21 days of culture, normalized to initial seeding density ( $n = 3/$  condition). Cell densities were quantified using a fluorometric assay detailed earlier. (C) Fold-changes (vs. GSNO-free controls) in total protein, elastin, sGAG, and HA, deposited within cell matrix or released into pooled media, by human AAA-SMCs, in 2D and 3D cultures, in the presence of 100 nM GSNO. The total protein amounts were quantified using a BCA protein assay, elastin amounts using a Fastin Assay kit, sGAG amounts using a quantitative dye-binding sGAG assay kit, and HA amounts using a hyaluronan enzyme-linked immunosorbent quantitative assay. Quantitative results were obtained from cell matrix layers or pooled media after 21 days of culture and normalized to cell count within respective cases ( $n = 6/$  condition). Data were analyzed using one-way ANOVA followed by Tukey's HSD post-hoc testing, assuming unequal variance and differences deemed significant for  $p < 0.05$  between respective cases. Data shown represents mean  $\pm$  standard error in respective cases.

### 3.4. Total protein synthesis

Protein synthesis and release by AAA-SMCs has not been reported earlier. The total protein synthesized by AAA-SMCs, in 2D and 3D cultures, in the presence or absence of GSNO, was quantified as two separate components (**Fig. 2C**): protein deposited in the cell matrix (termed

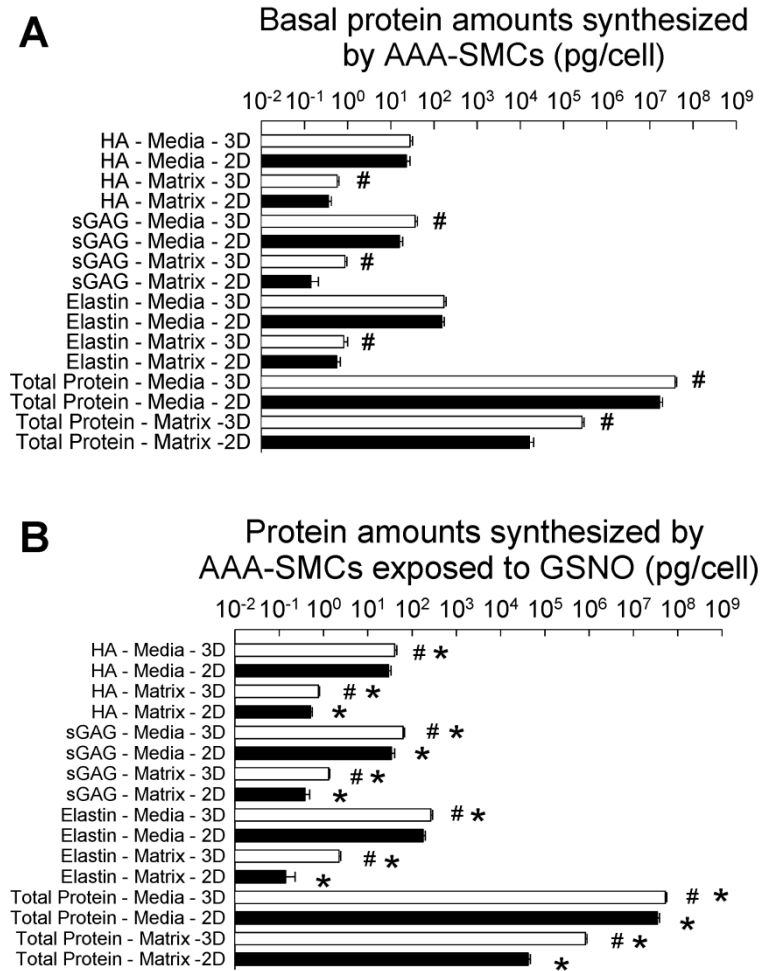
*matrix* here) and protein released into the pooled media (termed *media* here). A significant increase in the total protein deposited in cell matrix was observed with GSNO addition, in both 2D (2.58-fold) and 3D (3.1-fold) cultures. Total protein deposited in cell matrix within 3D cultures was significantly higher than that in 2D counterparts ( $p < 0.01$ ), in the presence or absence of GSNO (16.4-fold and 19.8-fold, respectively). GSNO stimulated significant increase in the total protein released into the pooled spent media in 3D cultures ( $p < 0.01$  vs. 2D). The amounts of protein in pooled media were at least two-orders of magnitude higher than in matrix, in all conditions. This study established the baseline for the total protein amounts released and deposited by adult human AAA-SMCs in 2D and 3D cultures (actual amounts provided in **Table 2**), in the absence of any stimulation. However, less than 2% of total protein produced by AAA-SMCs was deposited as matrix within cell layers, suggesting that additional approaches are required to coacervate the protein into matrix form. Compared to healthy SMCs (**Table 2; Supplementary Fig. 1**), the total protein deposited within 3D cell layers or released into the spent media by AAA-SMCs was significantly higher (i.e., 2-fold and 19-fold, respectively) even in the absence of GSNO. GSNO stimulated a 7-fold increase in protein deposition within matrix layers and a 17-fold increase in protein release within pooled media by AAA-SMCs within 3D cultures, compared to Hu-SMCs (**Supplementary Fig. 1**).

**Table 2.** Amounts of various proteins deposited in cell matrix or released into pooled media by healthy and AAA human aortic SMCs, on a per cell basis, over a 21-day period, within 2D or 3D cultures, in the presence or absence of 100 nM GSNO. Data shown here represents the average of at least n = 6/ case. Data for the healthy Hu-SMCs were from our previous publication [18].

	GSNO dose (nM)	Fold-increase in proliferation, compared to initial seeding	Total protein amounts (µg)		Elastin (ng)		sGAGs (ng)		HA (pg)		LOX functional activity (pM)		
			Cell matrix	Pooled media	Cell matrix	Pooled media	Cell matrix	Pooled media	Cell matrix	Pooled media	Cell matrix	Pooled media	
3D cultures	Healthy Hu-SMCs	0	3.2	0.13	2.02	ND	7.06	ND	16.7	0.21	2.07	69	70
		100	2.03	0.12	3.12	1.31	29.9	0.49	7.08	0.5	3.2	370	1610
3D cultures	Hu-AAA-SMCs	0	2.05	0.27	37.9	< 0.01	0.17	< 0.01	0.036	0.57	27.6	0.1	2.76
		100	1.3	0.83	52.7	< 0.01	0.26	< 0.01	0.063	0.77	40.7	0.27	3.1
2D cultures	Hu-AAA-SMCs	0	2.8	0.016	16.8	< 0.01	0.15	< 0.01	0.015	0.36	22.8	0.02	0.18
		100	2.1	0.042	34.6	< 0.01	0.177	< 0.01	0.034	0.51	29.7	0.03	2.5

ND: Not detectable within assay limits (i.e., < 1 pg/cell amounts).

## Supplementary Figure 1



**Supplementary Figure 1.** Normalizes protein synthesis by human AAA-SMCs in the presence or absence of GSNO, in 2D and 3D cultures. (A) Basal amounts of HA, sGAG, elastin, and total protein deposited within cell matrix or released into pooled media, by human AA-SMCs, in 2D (black histograms) or 3D (white histograms) cultures. (B) Similar proteins and GAGs deposited by AAA-SMCs in the presence of 100 nM GSNO. Data represents mean  $\pm$  standard error of quantitative results obtained from cell matrix layers or pooled media, after 21 days of culture, and normalized to cell count within respective cases ( $n = 6/$  condition). \* indicates  $p < 0.01$  compared to GSNO-free cultures; # indicates  $p < 0.01$  for 2D vs. 3D, at a given concentration of GSNO.

### 3.5. Elastin synthesis and deposition

The total elastin synthesized by AAA-SMCs (**Fig. 2C**; **Table 2**) was quantified as that deposited in the cell layers (i.e., matrix elastin) or released into the pooled media (i.e.,

tropoelastin). The benefits of exogenous NO to elastin deposition in cell matrix appeared to be dependent on the substrate type. Compared to GSNO-free controls, significantly higher matrix elastin was deposited within 3D cultures with GSNO addition, although matrix elastin deposition decreased in 2D cultures. GSNO stimulated tropoelastin release only within 3D cultures, although the amounts were two-orders of magnitude higher than matrix elastin (**Table 2**).

The matrix elastin yields (ratio of matrix elastin to the total elastin produced) within 2D AAA-SMCs cultures were 0.4% and 0.08% with 0 and 100 nM GSNO additive-cultures, respectively. However, 3D cultures modestly enhanced matrix elastin yields in the absence and presence of GSNO (0.5% and 0.8%, respectively). Thus, elastic matrix yields improved by 10-fold in 3D cultures with the addition of GSNO, similar in trend to that observed for the total protein amounts.

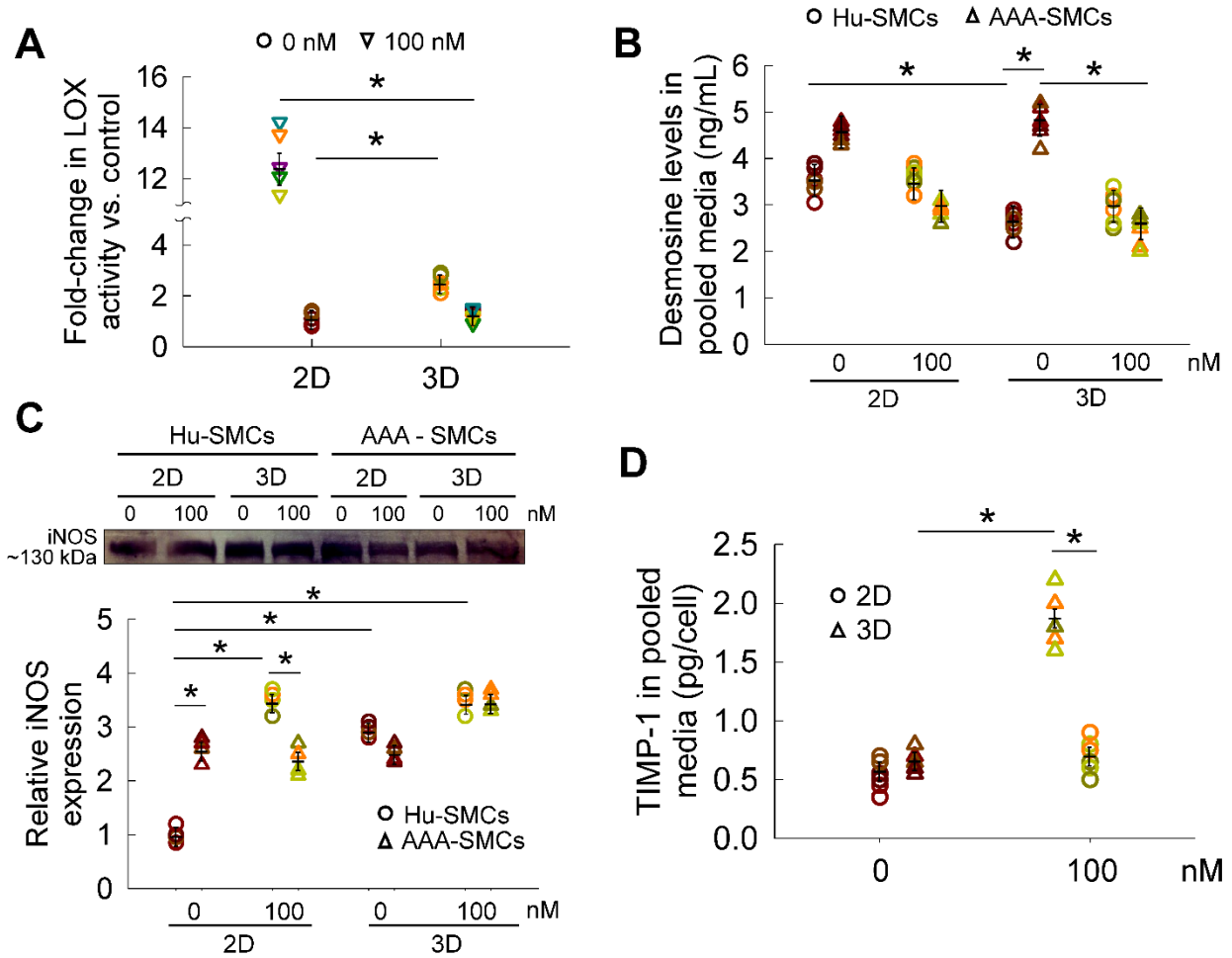
### **3.6. sGAG and HA synthesis**

Adding GSNO to AAA-SMC cultures increased sGAG deposition in matrix layers (2.73- and 1.52- fold, respectively) and in pooled media (2.17- and 1.72- fold, respectively) within 2D and 3D cultures, on a per cell basis (**Fig. 2C**), although the amounts were two orders of magnitude higher in pooled media. Compared to 2D cultures, 3D cultures appeared to promote sGAG release into pooled media or deposition within cell layers, on a per cell basis (**Table 2**). sGAG yield (ratio of matrix sGAG to the total sGAG produced) within 2D AAA-SMC cultures indicated that matrix yields were 0.9% and 2.3% in controls and GSNO-additive cultures, respectively. However, 3D cultures did not show any enhancement of matrix sGAG yields, in the presence or absence of GSNO.

GSNO addition modestly increased HA deposition in cell matrix on a per cell basis in both 2D and 3D cultures (1.41- and 1.35- fold, respectively; **Fig. 2C**), with similar increases in HA release into the pooled media. When AAA-SMCs were cultured in 2D, the matrix HA yields (ratio of HA deposited in matrix to the total HA produced) were 1.6% and 1.7% within controls and

GSNO additive-cultures, respectively. However, 3D cultures modestly increased matrix HA yields, in the presence or absence of GSNO (2% and 1.9%, respectively).

**Figure 3**



**Figure 3.** (A) Fold-changes in LOX enzyme functional activity within cell matrix and pooled media of AAA-SMC cultures, quantified using an Amplex Red® fluorometric assay and quantified on a per cell basis. Cells were exposed to 100 nM GSNO while controls received no GSNO. (B) Desmosine levels in pooled media collected from 2D or 3D Hu-SMCs (black histograms) or AAA-SMC cultures (black histograms), over the 21-day period, in the presence or absence of GSNO. (C) iNOS protein expression was quantified from western blot analysis. Representative bands are shown in the insert for comparison. iNOS protein expression by AAA-SMC cultures (white histograms) was normalized to that in 2D GSNO-free cultures of healthy SMCs (black histograms). (D) Similarly, the release of TIMP-1 into pooled media was quantified using a TIMP-1 ELISA assay. GSNO (0 or 100 nM) was supplemented to AAA-SMC cultures in 2D (black histograms) or 3D (white histograms) cultures over 21 days. Data were analyzed using one-way ANOVA followed by Tukey’s HSD post-hoc testing, assuming unequal variance



and differences deemed significant for  $p < 0.05$ . Data shown represent mean  $\pm$  standard error of quantified data and normalized to cell count within respective cases ( $n = 6$  per condition).

### **3.7. LOX enzyme activity**

While GSNO addition to 2D cultures did not induce a significant change in LOX activity within cell matrix, it induced a 2.55-fold increase within 3D cultures (**Fig. 3A**;  $p < 0.01$ ). LOX activity in matrix within 3D cultures was significantly higher (2.2-fold;  $p < 0.01$ ) than that in 2D cultures. LOX activity within pooled media from 3D cultures was 13.5-fold higher than that in 2D cultures in the absence of GSNO. Although adding GSNO to 3D cultures did not enhance LOX activity compared to controls, it significantly increased LOX activity within 2D cultures (14.9-fold;  $p < 0.01$ ).

### **3.8. Desmosine crosslink density**

In healthy SMC cultures (**Fig. 3B**), desmosine levels were higher in 2D cultures than in 3D cultures ( $p < 0.01$ ), and GSNO offered no additional benefit in both 2D and 3D cultures. However, in AAA-SMC cultures, desmosine levels were significantly higher in controls compared to GSNO-receiving cultures ( $p < 0.01$ ), in both 2D and 3D. The basal levels of desmosine by AAA-SMCs remained unaltered in both 3D and 2D cultures. Finally, significant difference in desmosine levels were noted between healthy and AAA derived SMCs, in 3D cultures receiving no GSNO ( $p < 0.001$ ).

### **3.9. iNOS expression and TIMP-1 release**

To test if exogenously-delivered NO influenced iNOS protein expression in AAA-SMC cultures, western blot analysis was performed (**Fig. 3C**; bands in insert). The basal level of iNOS expression (2D control cultures) was significantly higher in AAA-SMCs compared to healthy counterparts ( $p < 0.05$ ). It was found that GSNO addition to 2D cultures significantly promoted iNOS protein expression in healthy SMCs, but not in 3D cultures. Expression of iNOS

by AAA-SMCs, on the other hand, was not modified by 2D or 3D cultures, and/or by GSNO addition.

No significant difference in TIMP-1 release was noted between 2D and 3D AAA-SMC cultures in controls (**Fig. 3D**). GSNO induced a 2.4-fold increase in TIMP-1 release in 3D cultures. While the basal levels of TIMP-1 release was significantly lower in AAA-SMCs compared to adult healthy aortic SMCs in 3D cultures[18], the levels were similar in the presence of 100 nM GSNO.

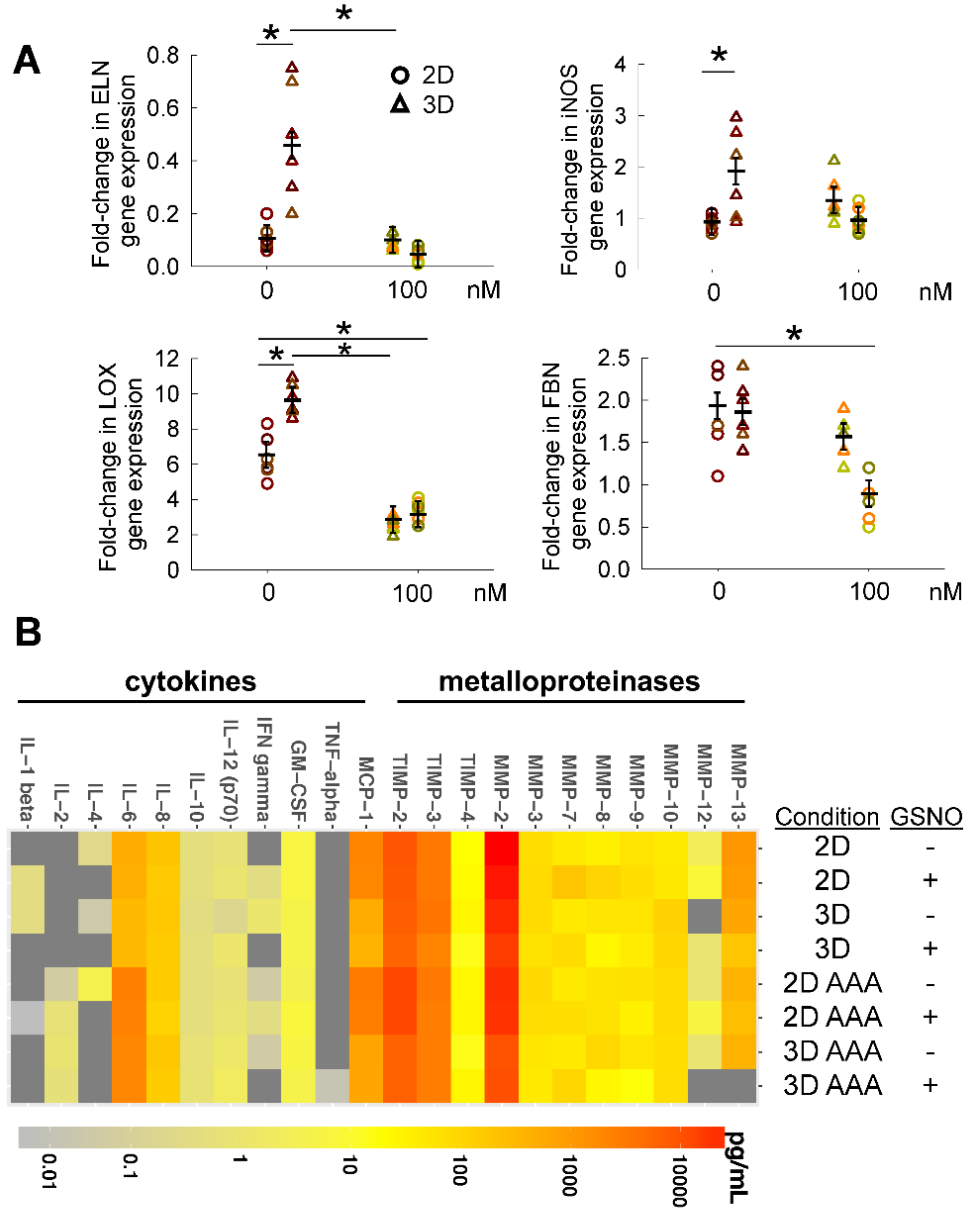
### **3.10. Elastin, iNOS, LOX and fibrillin gene expression**

Elastin (ELN) gene expression in AAA-SMCs, both in 2D and 3D cultures, in the presence or absence of NO cues, was significantly lower compared to healthy SMCs (**Fig. 4A**). Such inhibited elastin gene expression levels in AAA-SMCs, compared to healthy SMCs, was in agreement with their respective protein expression levels of matrix elastin (**Table 2**). Similarly, within AAA-SMCs, elastin gene expression was significantly lower in 2D compared to that in 3D, in agreement with their protein expression levels. Surprisingly, elastin gene expression was significantly lower after GSNO addition, in contrast to tropoelastin and matrix elastin produced by these cells (**Fig. 2, C-D**).

The iNOS gene expression of healthy and AAA-SMCs were similar in 2D and significantly increased in 3D cultures for AAA-SMCs (**Fig. 4A**). Adding GSNO had no significant effect on iNOS gene expression in AAA-SMC cultures, suggesting that AAA-SMCs are sensitive to signaling from exogenous NO cues, similar to their healthy counterparts. LOX gene expression was significantly higher (6 to 10 -fold in 2D and 3D cultures, respectively) in AAA-SMCs compared to healthy SMCs, although adding GSNO suppressed such elevated levels (**Fig. 4A**), in contrast with the LOX functional activity (**Fig. 3A**). The baseline levels of fibrillin-1 (FBN) gene in AAA-SMCs was significantly higher compared to their healthy counterparts, although such

expression levels were significantly downregulated in 2D AAA-SMC cultures with GSNO addition (Fig. 4A).

**Figure 4**



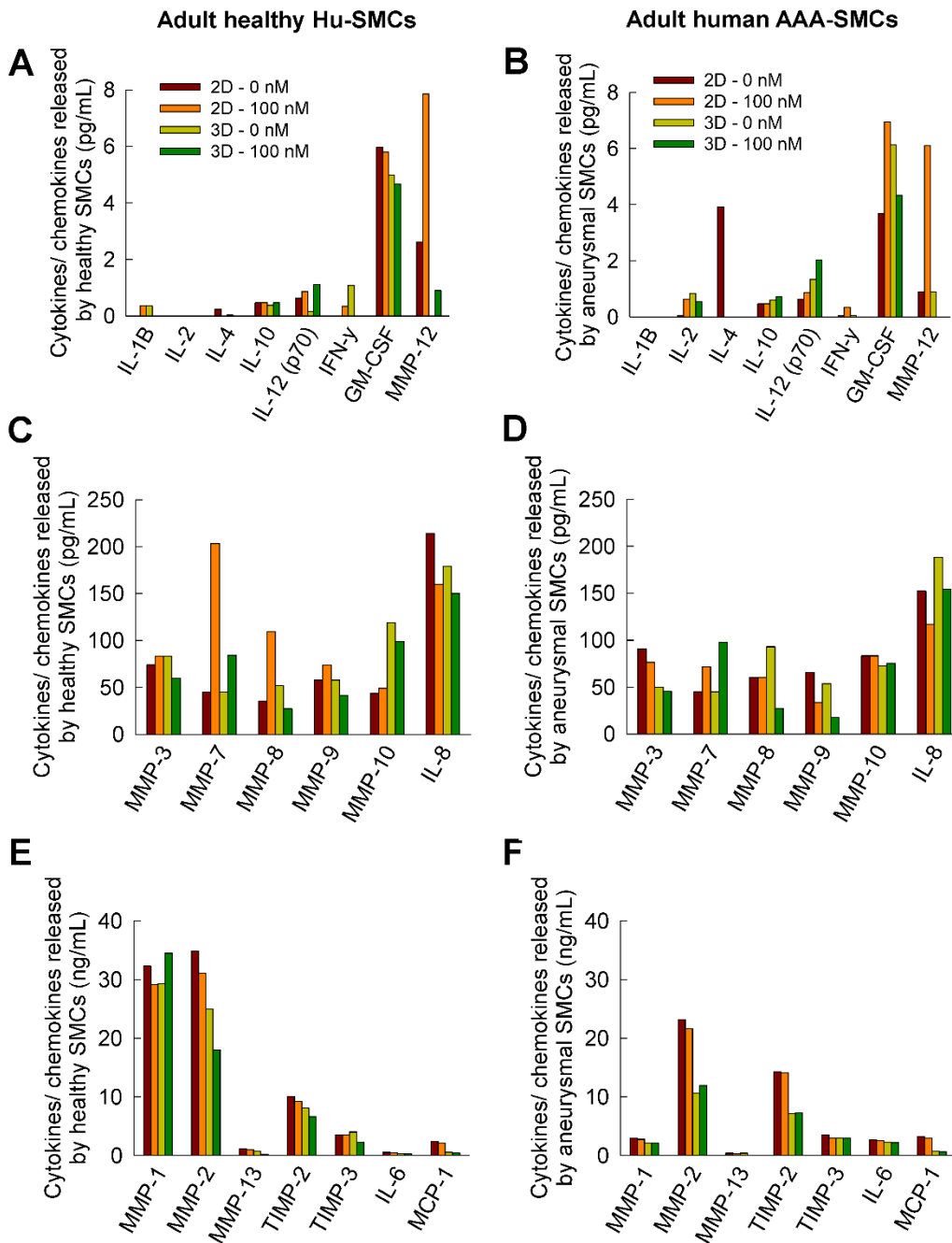
**Figure 4.** (A) Lavik method ( $\Delta\Delta C_t$  method) was used for relative quantification of the fold changes in ELN, iNOS, LOX, and FBN genes in AAA-SMCs, after addition of GSNO (0 or 100 nM) within 2D (black histograms) or 3D (white histograms) cultures for 21 days. The gene expressions obtained from qRT-PCR analysis within AAA-SMCs were first normalized to housekeeping gene (18S) expression within respective cultures, and further normalized to

respective gene expressions within healthy Hu-SMCs cultured under similar conditions. Data were analyzed using one-way ANOVA followed by Tukey's HSD post-hoc testing, assuming unequal variance and differences deemed significant for  $p < 0.05$ . Data shown represent mean  $\pm$  standard error ( $n = 6$  independent data points per condition). (B) Heat map showing the amounts of cytokines, chemokines, and MMPs/TIMPs released by healthy and AAA SMCs, in 2D and 3D cultures, in the presence or absence of 100 nM GSNO, as measured using laser bead immunoassay.

### **3.11. Release of cytokines, chemokines, MMPs, and TIMPs**

We quantified the baseline levels (2D - 0 nM) of cytokines, chemokines, MMPs and TIMPs released by healthy Hu-SMCs [**Supplementary Fig. 2 (A: < 10 pg/mL; C: < 250 pg/mL; E: < 40 ng/mL)**] and adult human AAA-SMCs [**Supplementary Fig. 2 (B: < 10 pg/mL; D: < 250 pg/mL; F: < 40 ng/mL)**]. Their levels in 3D cultures, and in the presence of 100 nM GSNO were also shown in respective panels. The analytes released by SMCs were plotted on a log-scale using a heatmap function (**Fig. 4B**). MMPs and TIMPs were the most highly-expressed analytes compared to the cytokines (e.g., ILs). Benefits of GSNO delivery in healthy SMC cultures (both 2D and 3D), appeared marginal with no significant modulation in ILs and MMPs release but significant increase in TIMPs release. However, in 3D AAA-SMC cultures, GSNO suppressed the release of several analytes (e.g., IFN- $\gamma$ , MMPs-8, 9, 12, IL-8) compared to all other conditions, and some analytes were undetectable in most conditions (IL-1 $\beta$  and TNF- $\alpha$ ). A ten-fold increase in IL-6 release by AAA-SMCs was found compared to healthy counterparts. Variations in analyte concentrations were observed across samples cultured in 2D vs. 3D environments; for instance, SMCs in 2D cultures had higher concentrations of MMP-2, MMP-12, TIMP-2, TIMP-3, and MCP-1, in both healthy and AAA-SMC cultures. In general, cytokine and MMPs production in both cell types appeared to be regulated by GSNO presence as well as culture substrate (2D vs. 3D).

## Supplementary Figure 2

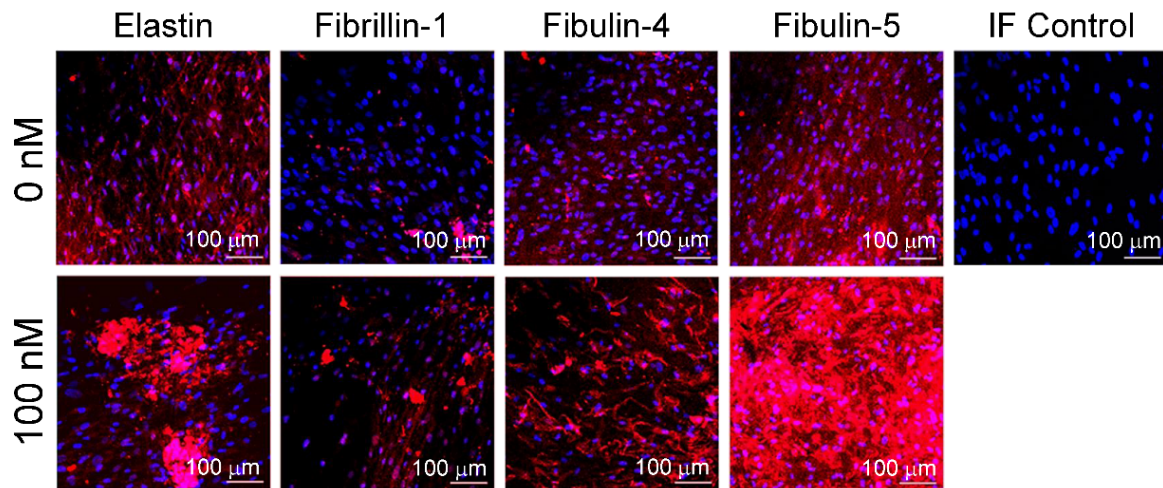


**Supplementary Figure 2.** Amounts of various cytokines and chemokines released by human healthy aortic SMCs (A, C, E) or aneurysmal SMCs (B, D, F) over 21 days, within 2D or 3D cultures, in the presence or absence of exogenous GSNO (100 nM). Data was obtained from multiplexing laser bead assays using respective supernatants pooled over the culture duration. Panels A and B depict the analytes detected within 0 – 10 pg/mL levels (low amounts), C and D depict analytes detected within 10 – 250 pg/mL levels (moderate amounts), and E and F depict analytes detected within 0.2 – 35 ng/mL levels (high amounts).

### 3.12. Immunofluorescence labeling of matrix proteins

AAA-SMCs deposited detectable matrix elastin and fibulins-4 and 5 within 2D cultures over the 21-day period within control cultures (**Fig. 5**). However, fibrillin-1, critical for matrix elastin coacervation and crosslinking, was undetectable around the periphery of most cells. GSNO significantly promoted deposition of matrix elastin, fibrillin-1 and fibulins-4, 5, compared to controls.

**Figure 5**



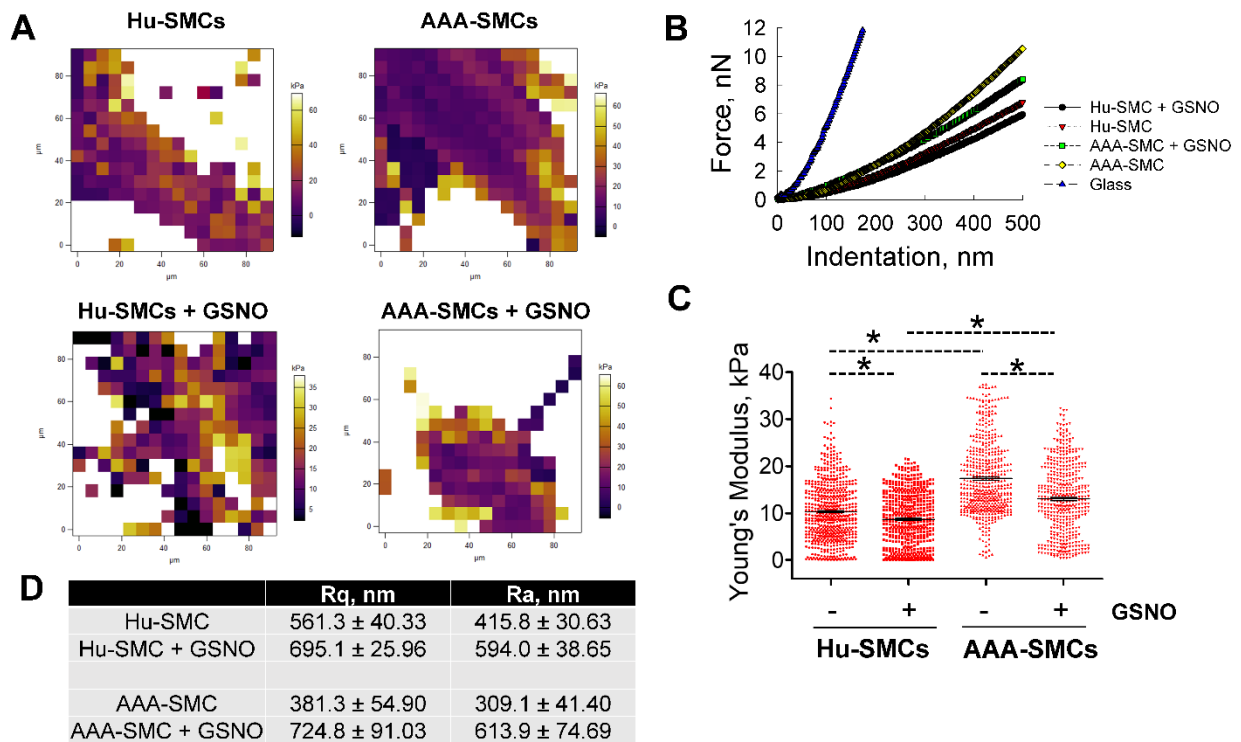
**Figure 5.** Representative immunofluorescence images of AAA-SMC layers in 2D cultures, with or without GSNO, stained with respective primary antibodies for elastin, fibrillin-1, fibulin-4 and fibulin-5, and counterstained with DAPI for cell nuclei. A significant increase in the expression of all the proteins was noted in the presence of 100 nM GSNO. Scale bar: 100  $\mu\text{m}$ . For each treatment condition, at least three independent cell layers were imaged, with six random regions captured in each cell layer.

### 3.13. Cell mechanics using AFM

Single cell nanoindentation measurements were obtained to quantify the elastic modulus ( $E$ ) of live SMCs under different culture conditions (**Fig. 6; Supplementary Fig. 3**). Representative phase-contrast images (**Supplementary Fig. 3**), heat maps of elastic moduli (**Fig. 6A**), and force-indentation curves (**Fig. 6B**) were shown for healthy and AAA SMCs, in the presence or

absence of GSNO. The average modulus of elasticity for AAA-SMCs ( $17.41 \pm 0.34$  kPa) was significantly higher (1.6-fold;  $p < 0.001$ ) than for healthy SMCs ( $10.42 \pm 0.29$  kPa), indicating an increase of stiffness in AAA-SMCs (Fig. 6C). Upon exposure to GSNO, the average modulus of elasticity for healthy SMCs decreased by 1.3-fold (healthy SMCs:  $8.67 \pm 0.25$  kPa,  $p < 0.05$ ; AAA-SMCs:  $13.03 \pm 0.35$  kPa,  $p < 0.05$ ). Cell roughness measurements showed that AAA-SMCs were smoother than Hu-SMCs (Fig. 6D). GSNO addition significantly increased cell surface roughness in Hu-SMCs ( $p < 0.01$ ), and nearly doubled the roughness in AAA-SMCs, compared to respective controls. In GSNO presence, Hu-SMCs and AAA-SMCs had no significant differences in their surface roughness.

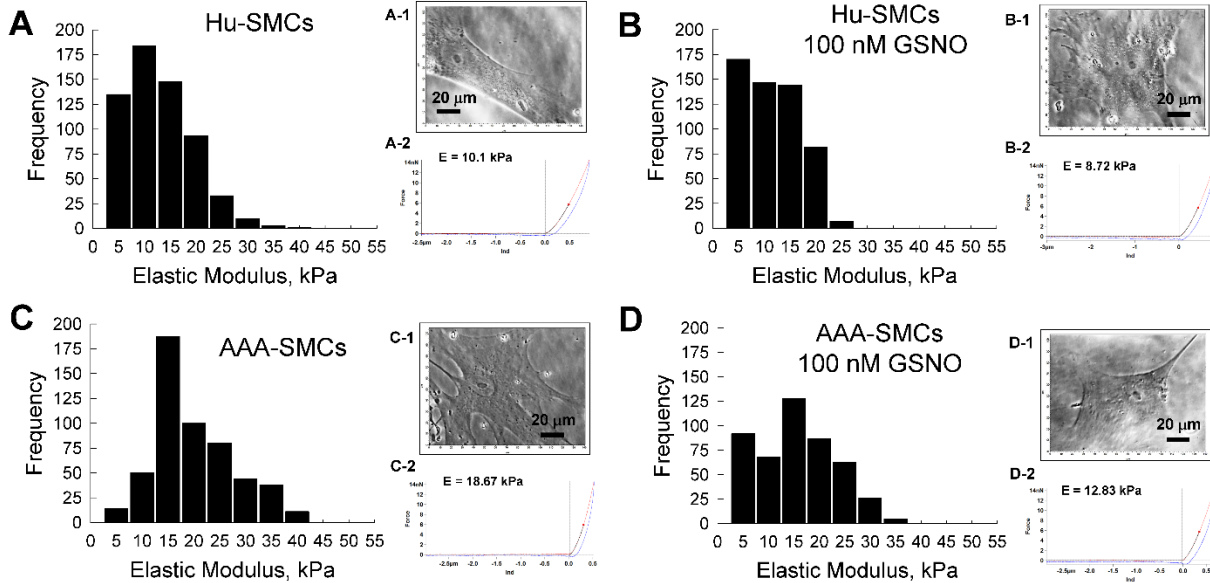
**Figure 6**



**Figure 6.** (A) Representative force maps of healthy Hu-SMCs (left panels) and AAA-SMCs (right panels) treated with 100 nM GSNO (lower panels). Background from petri dish was subtracted in these images. Representative force-indentation curves (B) and average Young's Modulus (C) of these cells cultured on 2D substrates, in the presence or absence of 100 nM GSNO. The black dotted lines in (C) represent the arithmetic averages in respective cases, i.e.,  $10.33 \pm 0.2624$  KPa for untreated Hu-SMCs ( $n = 605$ ),  $8.674 \pm 0.2491$  KPa for Hu-SMCs

receiving GSNO ( $n = 550$ ),  $17.41 \pm 0.3405$  KPa for untreated AAA-SMCs ( $n = 524$ ), and  $13.03 \pm 0.3498$  KPa for AAA-SMCs receiving GSNO ( $n = 469$ ). (D) The surface roughness parameters  $R_q$  and  $R_a$  in Hu-SMCs and AAA-SMCs, in the presence of absence of GSNO. Data were analyzed using one-way ANOVA followed by Tukey's HSD post-hoc testing, assuming unequal variance and differences deemed significant for  $p < 0.05$ . Data shown represent mean  $\pm$  standard error ( $n = 6$  independent data points per condition).

### Supplementary Figure 3



**Supplementary Figure 3.** Elastic modulus of cells acquired from AFM analysis. Histograms of elastic modulus data and corresponding representative phase contrast images of healthy Hu-SMCs (A, A-1), healthy Hu-SMCs treated with 100 nM GSNO (B, B-1), AAA-SMCs (C, C-1), and AAA-SMCs treated with 100 nM GSNO (D, D-1). Representative force-indentation curves (Hertz model fit) and corresponding elastic moduli measured from those curves for healthy Hu-SMCs (A-2), healthy Hu-SMCs treated with 100 nM GSNO (B-2), AAA-SMCs (C-2), and AAA-SMCs treated with 100 nM GSNO (D-2).

## 4. Discussion

In this study, we compared the differences and behaviors of human aneurysmal SMCs and their healthy counterpart with regard to cell proliferation, phenotypic and genotypic expression, transcriptomic analyses, immunofluorescence imaging, biomechanical characteristics, and their response to exogenously-delivered NO cues, as a therapeutic AAA treatment.



Prior studies reported that adult human AAA-SMCs proliferated 4-fold over 16 days [27], 5-fold over 21 days [28], or doubled every 5.3 days [29] in 2D cultures, which is significantly higher than that noted in our study. AAA-SMCs proliferated significantly slower compared to their healthy counterparts (Table 2), possibly due to diseased nature and/ or differences in the age of the donors. AAA-SMCs, derived from a relatively older patient, synthesized and deposited more proteins in 3D cultures compared to the healthy SMCs derived from a younger adult. Our results highlight the increased ability of aortic SMCs to proliferate, migrate and deposit ECM under diseased vascular conditions [30].

Despite the prominent role of elastin in aortic tissue homeostasis maintenance, quantification of elastin synthesized by human AAA-SMCs has received less attention. Tropoelastin, the precursor molecule to elastin, is encoded by a single copy of ELN gene in SMCs and fibroblasts. Tropoelastin amounts in human AAA extracts was reported to be 5-fold higher than that within normal human aortic tissues [22]. Our current study suggests that healthy Hu-SMCs produce higher amounts of tropoelastin and matrix elastin compared to their AAA counterparts. Adult human AAA-SMCs were shown to release ~10 pg of tropoelastin and deposited 0.02 pg of matrix elastin on a per cell basis in 2D cultures, in the absence of any external cues [28]. These amounts were significantly lower than what we observed, despite similarities in donor age, disease phenotype and culture duration. Numerous studies have shown that the significant changes in elastin protein within AAA ECM might be due to a related change in the gene expression levels [31; 32]. Similar to our observations here, a down-regulation in elastin gene in AAA tissues was reported in a porcine model of induced AAA, compared to healthy counterparts [33].

Adult human AAA-SMCs in 2D cultures release significantly higher levels of GAGs (e.g., versican, perlecan, heparan sulfate, biglycans) compared to healthy aortic SMCs [34]. Although the various types of sGAGs released by AAA-SMCs were not individually identified in our study, we quantified the absolute amount of overall GAGs production by AAA-SMCs and found

multifold increases in HA release into pooled media and deposition into matrix within AAA-SMC cultures. The combined amount of elastin and GAGs, in both pooled media and cell matrix, constitute a small fraction of the total matrix, suggesting that in addition to elastin and GAGs, numerous other proteins such as collagens and proteoglycans, might have been released and deposited by AAA-SMCs within 2D and 3D cultures.

Such deposited elastin precursors are crosslinked in the presence of LOX enzyme, resulting in the formation of desmosine and isodesmosine linkages between lysine molecules on elastin molecules [35]. Thus, the final crosslinked elastic fibers typically have a microfibril sheath surrounding the core elastin molecules. Additional stimulation such as alternate scaffold design, elastogenic scaffold material, exogenous LOX, and mechanical stimuli might be necessary to coax the AAA-SMCs to enhance matrix elastin yields. Although it is interesting to note that AAA-SMCs produce LOX which is functionally active, the levels of LOX functional activity within AAA-SMC cultures are at least two orders of magnitude lower than that quantified within healthy SMC cultures (Table 2), on a per cell basis. This difference might be due to the age difference in the donor sources of these cell lines, as well as the phenotypic differences between healthy versus AAA cells. Studies have shown that in addition to regulating vascular SMC phenotype (proliferation, migration), LOX also plays a primary role in ECM crosslinking such as collagens, elastin and GAGs [36]. However, under diseased conditions such as aneurysms, characterized by remarkable degradation and ECM remodeling, LOX activity and expression is significantly reduced. While it is not clear whether reduction in LOX levels contribute to the onset of the pathogenesis of these diseases or vice versa, numerous AAA-induced animal models demonstrate strong correlation between LOX expression reduction and disease progression [37].

Desmosine levels in healthy human arterial tissues was noted to be at least 9-fold higher than that in AAA segments [22], and reduced desmosine levels were reported in dissecting AAAs [38], suggesting diminished levels of mature, crosslinked elastin in AAA tissues. We here

measured desmosine levels in the supernatants to determine if sufficient levels of desmosine is being produced that could crosslink tropoelastin *in vitro* within SMC cultures.

Although vascular NO plays an important role in regulating SMC functions such as vasodilation, survival, gene regulation, and quiescence phenotype, the harmful role of higher NO levels in the pathogenesis of aneurysms has been documented [39; 40; 41]. Specifically, iNOS-stimulated NO release from vascular SMCs was shown to participate in elastin degradation and disruption of vascular ECM [42]. Our observations agree with previous reports that experimental or human AAA-derived tissues had higher iNOS levels compared to control tissues where iNOS could barely be detected [40; 43]. TIMPs-1, 2 regulate ECM remodeling in vasculature by controlling the levels and activity of MMPs. In agreement with our results, no significant differences in TIMP-1 levels (Western blotting) within tissue sections isolated from AAA patients and their healthy counterparts were observed [44].

Localized inflammation contributes to weakening of aorta due to imbalances in ECM levels [45]. This has prompted research focused on regulating the production of inflammatory molecules as a therapeutic intervention in lieu of invasive surgical approaches [46]. The concentrations noted for MMPs/ TIMPs in our study broadly falls in the range reported by others and our previous work [18; 27]. Given the apparent differences in cytokine production between AAA and healthy SMCs, our data supports the prevailing notion that cytokine stimulation via paracrine or autocrine signaling may in turn modulate MMP activation [47]. Although it has been suggested that NO can influence the production of some cytokines and chemokines [48], we did not see any differences. In summary, our data is consistent with the inflammatory patterns seen in AAA subjects and suggests that NO presence modulates MMP production in a potentially therapeutic manner.

In addition to alterations in composition and functionality of vascular endothelium and ECM, changes in cell stiffness might also contribute to vascular tissue stiffness in AAAs, atherosclerosis and hypertensive conditions. The stiffness (~30 kPa) of hypertensive aorta-

derived SMCs, as measured by AFM nano-indentation, was reported to be two-fold higher than that of normal aorta (~14 kPa), and such stiffness was mediated by cytoskeletal proteins [49]. Vascular SMCs from old male monkeys exhibited much higher stiffness than their younger counterparts (42 kPa vs. 13 kPa) [50]. The elastic modulus of primary adult male rat arteriole-derived SMCs (~13.5 kPa) decreased by 38% upon exposure to NO donor PANOate, most likely due to remodeling of actin cytoskeleton network [51]. Marfan vascular SMCs were two-fold stiffer than healthy human SMCs, as measured by AFM, most likely due to higher focal adhesion kinase protein and actin stress fibers expression [52]. Here, we report for the first time on the stiffness and surface roughness of human aortic SMCs from healthy and AAA tissues, using AFM nano-indentation of live cells. Our results show that (i) elastic modulus of healthy Hu-SMCs is lower than that in rats and monkeys; (ii) human AAA-SMCs have higher stiffness and lower surface roughness compared to healthy Hu-SMCs; and (iii) human AAA-SMCs had significantly lower stiffness compared to hypertensive rat SMCs or aged monkey SMCs.

Our results support our hypothesis that AAA-SMCs do respond to exogenous NO cues to modulate cell proliferation and protein synthesis in 3D cultures. We have recently shown that healthy Hu-SMCs produced significantly higher amounts of tropoelastin and matrix elastin in the presence of 100 nM GSNO, and that an optimal 100 nM GSNO promoted sGAG deposition in matrix layers but not their release into the pooled media, within 3D Hu-SMC cultures [18].

An increase in LOX functional activity within 3D AAA-SMC cultures in GSNO presence (Fig. 3), and significantly higher deposition of fibrillar forms of elastic matrix-associated proteins such as fibrillin-1, and fibulins- 4, 5 (Fig. 5), is highly encouraging for therapeutic tissue engineering and in situ elastin regeneration. Increased levels of LOX functional activity by exogenous GSNO might partially explain the increases in matrix elastin, GAGs, and tropoelastin in 3D AAA-SMC cultures. Similar increases in tropoelastin but not desmosine levels by human and rat AA-SMCs were reported by others [22; 53]. Higher amounts of GSNO (> 100 nM) could possibly elevate

desmosine levels in 3D AAA-SMC cultures, which further enhances elastin crosslinking and maturation.

The increased levels of TIMP-1 in AAA-SMC 3D cultures in the presence of GSNO is encouraging in modulating further degradation of vascular ECM by MMPs under diseased conditions. GSNO induced significant increases in matrix elastin deposition in 3D cultures and reduced MMP-9 concentration by over 50% in all cases (2D/3D AAA-SMC cultures), compared to healthy controls. Given that the upregulation of MMP-9 is linked to the degradation of the aortic ECM, our results are encouraging as they suggest a therapeutic benefit in the supplementation of exogenous NO [54]. Similar trend was noted for MMP-2 in nearly all cases (excluding 3D AAA-SMC cultures). Similar patterns in MMP downregulation were observed in eNOS gene-transfected cells [55], and it has been suggested this pathway is regulated by guanylyl-cyclase dependent and independent pathways [56]. NO appeared to have little effect on TIMPs release across most cases. In agreement with literature, we noticed significantly higher IL-6 levels by AAA-SMCs. And finally, delivering exogenous NO significantly lessened AAA-SMC stiffness and enhanced surface roughness, possibly via modulation of cytoskeletal and surface proteins, respectively. We postulate that changes in stiffness beginning at single cell level might contribute to changes in vascular tone and functionality of aneurysmal vessels and delivering GSNO could be explored as a therapeutic strategy. Taken together, results confirm our hypothesis that exogenous NO delivery to AAA-SMCs might help to promote protein synthesis, release and deposition within 3D cultures, in addition to regulating their proliferation.

In conclusion, we established the baseline differences between adult human AAA and healthy SMCs, in terms of their size, proliferation, matrix and associated proteins synthesis and deposition, release of cytokines/ chemokines/ MMPs/ TIMPs, changes in genotype of elastogenic markers, and stiffness and roughness. We demonstrated that exogenously delivering NO *via* GSNO offers an effective strategy to enhance AAA-SMC functionality. These outcomes might help in further designing tissue engineering and regenerative medicine-based

approaches, consisting of 3D scaffolds and localized drug delivery options, specifically for in situ elastin regeneration and remodeling to arrest aneurysm progression.

### **Acknowledgements**

The authors acknowledge help from Dr. Ali Borazjani (Cleveland Clinic) with RT-PCR analysis, Sarah Carney with confocal imaging, and Arsela Gishto with biochemical assays.

### **Sources of Funding**

This work was partially supported by the Cleveland State University Cellular and Molecular Medicine Fellowships and the Dissertation Research Awards to J.J. and K.F., the Choose Ohio First Scholarship to P.S., the National Science Foundation (CBET, Award # 1337859) to C.K., the National Institutes of Health (R01ES025779) to C.K., the European Fighting Aneurysmal disease grant (Health-F2-2008–200647) to F.P., and the National Institutes of Health (HL132856 and HL119810-05; Project Number: NCAI-17-7-APP-CCF-Ramamurthi) to A.R.

**Conflicts of Interest: None declared.**

### **References**

- [1] S. Aggarwal, A. Qamar, V. Sharma, A. Sharma, Abdominal Aortic Aneurysm: A comprehensive review, *Exp Clin Cardiol* 16 (2011) 11.
- [2] M.A. Dale, M.K. Ruhlman, B.T. Baxter, Inflammatory cell phenotypes in AAAs: their role and potential as targets for therapy, *Arterioscler Thromb Vasc Biol* 35 (2015) 1746-55.
- [3] C.G. Solomon, K.C. Kent, Abdominal Aortic Aneurysms, *N Engl J Med* 371 (2014) 2101-8.
- [4] B.S. Brooke, S.K. Karnik, D.Y. Li, Extracellular matrix in vascular morphogenesis and disease: structure versus signal, *Trends Cell Biol* 13 (2003) 51-6.

- [5] P. Lacolley, V. Regnault, A. Nicoletti, Z. Li, J.-B. Michel, The vascular smooth muscle cell in arterial pathology: a cell that can take on multiple roles, *Cardiovasc Res* 95 (2012) 194-204.
- [6] H. Kuivaniemi, E.J. Ryer, J.R. Elmore, G. Tromp, Understanding the pathogenesis of abdominal aortic aneurysms, *Expert Rev Cardiovasc Ther* 13 (2015) 975-987.
- [7] A.J. Bank, H. Wang, J.E. Holte, K. Mullen, R. Shammash, S.H. Kubo, Contribution of collagen, elastin, and smooth muscle to in vivo human brachial artery wall stress and elastic modulus., *Circulation* 94 (1996) 3263-3270.
- [8] J.E. Wagenseil, R.P. Mecham, Vascular Extracellular Matrix and Arterial Mechanics, *Physiol Rev* 89 (2009) 957-989.
- [9] B. Sivaraman, C.A. Bashur, A. Ramamurthi, Advances in biomimetic regeneration of elastic matrix structures, *Drug Deliv Transl Res* 2 (2012) 323-50.
- [10] B.S. Brooke, A. Bayes-Genis, D.Y. Li, New insights into elastin and vascular disease, *Trends Cardiovasc Med* 13 (2003) 176-81.
- [11] E. Arteaga-Solis, B. Gayraud, F. Ramirez, Elastic and collagenous networks in vascular diseases, *Cell Struct Funct* 25 (2000) 69.
- [12] R.A. Fraga-Silva, B. Trachet, N. Stergiopoulos, Emerging Pharmacological Treatments to Prevent Abdominal Aortic Aneurysm Growth and Rupture, *Curr Pharm Des* 21 (2015) 4000-6.
- [13] F.M. Davis, D.L. Rateri, A. Daugherty, Abdominal aortic aneurysm: novel mechanisms and therapies, *Curr Opin Cardiol* 30 (2015) 566-73.
- [14] N. Patelis, D. Moris, G. Karaolani, S. Georgopoulos, Endovascular vs. Open Repair for Ruptured Abdominal Aortic Aneurysm, *Med Sci Monit Basic Res* 22 (2016) 34-44.
- [15] M.D. Tilson, Decline of the atherogenic theory of the etiology of the abdominal aortic aneurysm and rise of the autoimmune hypothesis, *J Vasc Surg* 64 (2016) 1523-25.
- [16] C.A. Bashur, L. Venkataraman, A. Ramamurthi, Tissue Engineering and Regenerative Strategies to Replicate Biocomplexity of Vascular Elastic Matrix Assembly, *Tissue Eng Part B* 18 (2012) 203-17.
- [17] C.A. Bashur, R.R. Rao, A. Ramamurthi, Perspectives on stem cell-based elastic matrix regenerative therapies for abdominal aortic aneurysms, *Stem Cells Transl Med* 2 (2013) 401-8.
- [18] P. Simmers, A. Gishto, N. Vyavahare, C.R. Kothapalli, Nitric oxide stimulates matrix synthesis and deposition by adult human aortic smooth muscle cells within three-dimensional cocultures, *Tissue Eng Part A* 21 (2015) 1455-70.

- [19] C.J. O'Callaghan, B. Williams, Mechanical strain-induced extracellular matrix production by human vascular smooth muscle cells - Role of TGF-beta(1), *HYPERTENSION* 36 (2000) 319-324.
- [20] C. Erikstrup, L.M. Pedersen, L. Heickendorff, T. Ledet, L.M. Rasmussen, Production of hyaluronan and chondroitin sulphate proteoglycans from human arterial smooth muscle - the effect of glucose, insulin, IGF-1 or growth hormone, *Eur J Endocrinol* 145 (2001) 193-198.
- [21] J.E. Figueroa, J. Oubre, P. Vijayagopal, Modulation of vascular smooth muscle cells proteoglycan synthesis by the extracellular matrix, *J Cell Physiol* 198 (2004) 302-9.
- [22] A. Krettek, G.K. Sukhova, P. Libby, Elastogenesis in human arterial disease: a role for macrophages in disordered elastin synthesis, *Arterioscler Thromb Vasc Biol* 23 (2003) 582-7.
- [23] N. Lamblin, P. Ratajczak, D. Hot, E. Dubois, M. Chwastyniak, O. Beseme, H. Drobecq, Y. Lemoine, M. Koussa, P. Amouyel, F. Pinet, Profile of macrophages in human abdominal aortic aneurysms: a transcriptomic, proteomic, and antibody protein array study, *J Proteome Res* 9 (2010) 3720-9.
- [24] B. Hama, G. Mahajan, C.R. Kothapalli, Characterizing viscoelasticity of unhydrolyzed chicken sternal cartilage extract suspensions: Towards development of injectable therapeutics formulations, *J Mech Behav Biomed Mater* 72 (2017) 90-101.
- [25] Q.S. Li, G.Y.H. Lee, C.N. Ong, C.T. Lim, AFM indentation study of breast cancer cells, *Biochem Biophys Res Commun* 374 (2008) 609-13.
- [26] K.S. Kim, C.H. Cho, E.K. Park, M.H. Jung, K.S. Yoon, H.K. Park, AFM-detected apoptotic changes in morphology and biophysical property caused by paclitaxel in Ishikawa and HeLa cells, *PLoS ONE* 7 (2012) e30066.
- [27] M. Crowther, S. Goodall, J.L. Jones, P.R. Bell, M.M. Thompson, Increased matrix metalloproteinase 2 expression in vascular smooth muscle cells cultured from abdominal aortic aneurysms, *J Vasc Surg* 32 (2000) 575-83.
- [28] C. Gacchina, T. Brothers, A. Ramamurthi, Evaluating smooth muscle cells from CaCl<sub>2</sub>-induced rat aortal expansions as a surrogate culture model for study of elastogenic induction of human aneurysmal cells, *Tissue Eng Part A* 17 (2011) 1945-58.
- [29] M.I. Patel, P. Ghosh, J. Melrose, M. Appleberg, Smooth muscle cell migration and proliferation is enhanced in abdominal aortic aneurysms, *Aust N Z J Surg* 66 (1996) 305-8.



- [30] G.K. Owens, M.S. Kumar, B.R. Wamhoff, Molecular regulation of vascular smooth muscle cell differentiation in development and disease, *Physiol Rev* 84 (2004) 767-801.
- [31] C.L. Mesh, B.T. Baxter, W.H. Pearce, R.L. Chisholm, G.S. McGee, J.S. Yao, Collagen and elastin gene expression in aortic aneurysms, *Surgery* 112 (1992) 256-61.
- [32] M. Wassef, B.T. Baxter, R.L. Chisholm, R.L. Dalman, M.F. Fillinger, J. Heinecke, J.D. Humphrey, a. et, Pathogenesis of abdominal aortic aneurysms: A multidisciplinary research program supported by the National Heart, Lung, and Blood Institute, *J Vasc Surg* 34 (2001) 730-8.
- [33] M. Sadek, R.L. Hynes, S. Goldenberg, K.C. Kent, M.L. Marin, P.L. Faries, Gene Expression Analysis of a Porcine Native Abdominal Aortic Aneurysm Model, *Surgery* 144 (2008) 252-8.
- [34] J. Melrose, J. Whitelock, Q. Xu, P. Ghosh, Pathogenesis of abdominal aortic aneurysms: possible role of differential production of proteoglycans by smooth muscle cells, *J Vasc Surg* 28 (1998) 676-86.
- [35] C.E. Schmelzer, Assembly and Properties of Elastic Fibers, *Elastic Fiber Matrices: Biomimetic Approaches to Regeneration and Repair*, CRC Press 2016, pp. 1-30.
- [36] J.M. Maki, R. Sormunen, S. Lippo, R. Kaarteenaho-Wiik, R. Soininen, J. Myllyharju, Lysyl oxidase is essential for normal development and function of the respiratory system and for the integrity of elastic and collagen fibers in various tissues, *Am J Pathol* 167 (2005) 927-36.
- [37] C. Rodríguez, J. Martínez-González, B. Raposo, J.F. Alcudia, A. Guadall, L. Badimon, Regulation of lysyl oxidase in vascular cells: lysyl oxidase as a new player in cardiovascular diseases, *Cardiovasc Res* 79 (2008) 7-13.
- [38] M. Watanabe, T. Sawai, Alteration of cross-linking amino acids of elastin in human aorta in association with dissecting aneurysm: analysis using high performance liquid chromatography, *Tohoku J Exp Med* 187 (1999) 291-303.
- [39] J.M. Johanning, P.J. Armstrong, D.P. Franklin, D.C. Han, D.J. Caney, J.R. Elmore, Nitric oxide in experimental aneurysm formation: early events and consequences of nitric oxide inhibition, *Ann Vasc Surg* 16 (2002) 65-72.
- [40] J.M. Johanning, D.P.M. Franklin, D.C., a. et, Inhibition of inducible nitric oxide synthase limits nitric oxide production and experimental aneurysm expansion., *J Vasc Surg* 33 (2001) 579-86.

- [41] K.D. Kroncke, K. Fehsel, C. Suschek, V. Kolb-Bachofen, Inducible nitric oxide synthase-derived nitric oxide in gene regulation, cell death and cell survival, *Int Immunopharmacol* 1 (2001) 1407-20.
- [42] D.C. Paik, W.G. Ramey, J. Dillon, M.D. Tilson, The nitrite/elastin reaction: implications for in vivo degenerative effects, *Connect Tissue Res* 36 (1997) 241-51.
- [43] J. Zhang, J. Schmidt, E. Ryschich, M. Mueller-Schilling, H. Schumacher, J.R. Allenberg, Inducible nitric oxide synthase is present in human abdominal aortic aneurysm and promotes oxidative vascular injury, *J Vasc Surg* 38 (2003) 360-7.
- [44] S. Saito, N. Zempo, A. Yamashita, H. Takenaka, K. Fujioka, K. Esato, Matrix metalloproteinase expressions in arteriosclerotic aneurysmal disease, *Vasc Endovascular Surg* 36 (2002) 1-7.
- [45] E. Choke, G. Cockerill, W.R. Wilson, S. Sayed, J. Dawson, I. Loftus, M.M. Thompson, A Review of Biological Factors Implicated in Abdominal Aortic Aneurysm Rupture, *Eur J Vasc Endovasc Surg* 30 (2005) 227-244.
- [46] F. Aziz, H. Kuivaniemi, Role of matrix metalloproteinase inhibitors in preventing abdominal aortic aneurysm, *Ann Vasc Surg* 21 (2007) 392-401.
- [47] Z.S. Galis, M. Muszynski, G.K. Sukhova, E. Simon-Morrissey, E.N. Unemori, M.W. Lark, E. Amento, P. Libby, Cytokine-stimulated human vascular smooth muscle cells synthesize a complement of enzymes required for extracellular matrix digestion, *Circ Res* 75 (1994) 181-9.
- [48] I.O. Peshkova, G. Schaefer, E.K. Koltsova, Atherosclerosis and aortic aneurysm - is inflammation a common denominator?, *FEBS J* 283 (2016) 1636-52.
- [49] N.L. Sehgel, Y. Zhu, Z. Sun, J.P. Trzeciakowski, Z. Hong, W.C. Hunter, D.E. Vatner, G.A. Meininger, S.F. Vatner, Increased vascular smooth muscle cell stiffness: a novel mechanism for aortic stiffness in hypertension, *Am J Physiol Heart Circ Physiol* 305 (2013) H1281-9.
- [50] H. Qiu, Y. Zhu, Z. Sun, J.P. Trzeciakowski, M. Gansner, C. Depre, R.R. Resuello, F.F. Natividad, W.C. Hunter, G.M. Genin, E.L. Elson, D.E. Vatner, G.A. Meininger, S.F. Vatner, Short communication: vascular smooth muscle cell stiffness as a mechanism for increased aortic stiffness with aging, *Circ Res* 107 (2010) 615-9.
- [51] Z. Hong, K.J. Reeves, Z. Sun, Z. Li, N.J. Brown, G.A. Meininger, Vascular smooth muscle cell stiffness and adhesion to collagen I modified by vasoactive agonists, *PLoS One* 10 (2015) e0119533.

- [52] E. Crosas-Molist, T. Meirelles, J. López-Luque, C. Serra-Peinado, J. Selva, L. Caja, D. Gorbenko, J.J. Uriarte, E. Bertran, Y. Mendizábal, V. Hernández, C. García-Calero, O. Busnadiego, E. Condom, D. Toral, M. Castellà, A. Forteza, D. Navajas, E. Sarri, F. Rodríguez-Pascual, H.C. Dietz, I. Fabregat, G. Egea, Vascular smooth muscle cell phenotypic changes in patients with Marfan syndrome, *Arterioscler Thromb Vasc Biol* 35 (2015) 960-72.
- [53] M. Huffman, J. Curci, G. Moore, D. Kerns, B. Starcher, R. Thompson, Functional importance of connective tissue repair during the development of experimental abdominal aortic aneurysms, *Surgery* 128 (2000) 429-38.
- [54] W.R. Wilson, M. Anderton, E.C. Schwalbe, J.L. Jones, P.N. Furness, P.R. Bell, M.M. Thompson, Matrix metalloproteinase-8 and -9 are increased at the site of abdominal aortic aneurysm rupture, *Circulation* 113 (2006) 438-45.
- [55] M.V. Gurjar, R.V. Sharma, R.C. Bhalla, eNOS gene transfer inhibits smooth muscle cell migration and MMP-2 and MMP-9 activity, *Arterioscler Thromb Vasc Biol* 19 (1999) 2871-7.
- [56] L.A. Ridnour, A.N. Windhausen, J.S. Isenberg, N. Yeung, D.D. Thomas, M.P. Vitek, D.D. Roberts, D.A. Wink, Nitric oxide regulates matrix metalloproteinase-9 activity by guanylyl-cyclase-dependent and -independent pathways, *Proc Natl Acad Sci U S A* 104 (2007) 16898-903.