



**HAL**  
open science

## The effects of dietary fatty acids on bone, hematopoietic marrow and marrow adipose tissue in a murine model of senile osteoporosis

E. B. Hassan, M. Alderghaffar, Fabien Wauquier, Véronique Coxam, O. Demontiero, S. Vogrin, Y. Wittrant, G. Duque

### ► To cite this version:

E. B. Hassan, M. Alderghaffar, Fabien Wauquier, Véronique Coxam, O. Demontiero, et al.. The effects of dietary fatty acids on bone, hematopoietic marrow and marrow adipose tissue in a murine model of senile osteoporosis. *Aging*, 2019, 11 (18), pp.7938-7947. 10.18632/aging.102299 . hal-02332543

**HAL Id: hal-02332543**

**<https://hal.science/hal-02332543>**

Submitted on 24 Oct 2019

**HAL** is a multi-disciplinary open access archive for the deposit and dissemination of scientific research documents, whether they are published or not. The documents may come from teaching and research institutions in France or abroad, or from public or private research centers.

L'archive ouverte pluridisciplinaire **HAL**, est destinée au dépôt et à la diffusion de documents scientifiques de niveau recherche, publiés ou non, émanant des établissements d'enseignement et de recherche français ou étrangers, des laboratoires publics ou privés.



Distributed under a Creative Commons Attribution 4.0 International License

# The effects of dietary fatty acids on bone, hematopoietic marrow and marrow adipose tissue in a murine model of senile osteoporosis

Ebrahim Bani Hassan<sup>1,2</sup>, Mostafa Alderghaffar<sup>3</sup>, Fabien Wauquier<sup>4</sup>, Veronique Coxam<sup>4</sup>, Odom Demontiero<sup>3</sup>, Sara Vogrin<sup>1,2</sup>, Yohann Wittrant<sup>4</sup>, Gustavo Duque<sup>1,2</sup>

<sup>1</sup>Australian Institute for Musculoskeletal Science (AIMSS), The University of Melbourne and Western Health, St. Albans, VIC, Australia

<sup>2</sup>Department of Medicine-Western Health, The University of Melbourne, St. Albans, VIC, Australia

<sup>3</sup>Ageing Bone Research Program, Sydney Medical School Nepean, The University of Sydney, Penrith, NSW, Australia

<sup>4</sup>Human Nutrition Unit, UMR1019, INRA/Université Clermont Auvergne, Clermont-Ferrand, France

**Correspondence to:** Gustavo Duque; email: [gustavo.duque@unimelb.edu.au](mailto:gustavo.duque@unimelb.edu.au)

**Keywords:** aging, fish oil, marrow adipose tissue, osteoporosis, SAMP8 mouse

**Received:** August 9, 2019

**Accepted:** September 14, 2019

**Published:** September 25, 2019

**Copyright:** Bani Hassan et al. This is an open-access article distributed under the terms of the Creative Commons Attribution License (CC BY 3.0), which permits unrestricted use, distribution, and reproduction in any medium, provided the original author and source are credited.

## ABSTRACT

**Purpose:** Marrow adipose tissue (MAT) expansion and associated lipotoxicity are important drivers of age-related bone loss and hematopoietic bone marrow (HBM) atrophy. Fish oil and borage oil (rich in  $\omega$ 3 fatty acids) can partially prevent aged-related bone loss in SAMP8 mice. However, whether preservation of bone mass in this progeria model is associated with MAT volumes remains unknown.

**Results:** MAT volume fraction (MAT%) showed a negative association with hematopoietic bone marrow (HBM%;  $r=-0.836$ ,  $p<0.001$ ) and bone (bone%;  $r=-0.344$ ,  $p=0.013$ ) volume fractions.

Adjusting for multiple comparisons, bone% was higher and MAT% was lower in Fish oil (FO)-supplemented groups vs. controls ( $p<0.001$ ). HBM% did not differ significantly between the four groups. However, in the group supplemented with FO, HBM comprised higher fractions and MAT constituted lower fractions of total marrow vs. controls ( $p<0.001$ ).

**Conclusion:** Feeding FO-enriched diet prevented age-related bone and HBM loss, by reducing MAT expansion. Our results further emphasize on the role(s) of MAT expansion in bone and HBM atrophy.

**Methods:** SAMP8 mice ( $n>9$  /group) were allocated into 4 categories and fed a control ration, FO-, sunflower oil (SFO)- and borage oil-enriched diets for lifetime. Femurs were scanned using microcomputed tomography ( $\mu$ CT) and bone, MAT, and HBM volumes were determined using an image analysis software.

## INTRODUCTION

Marrow adipose tissue (MAT) accumulation and the associated marrow lipotoxicity has been suggested as a major cause of bone and red marrow volume decline in humans and animals [1–5]. There is evidence that MAT-associated lipotoxicity impairs osteoblast function and survival, driving osteoblast towards a pro-apoptotic/pro-adipogenic phenotype, potentially resulting in

osteoporosis [1–4, 6–8]. MAT accumulation, which occurs at the expense of bone and hematopoietic bone marrow (HBM) [1], is associated with decreased bone formation at the proximity of MAT [9], and declined bone mechanical strength [8].

It has previously been shown that lifelong diets (starting at the young age and continuing till the end of life) supplemented with fish oil (FO) and borage oil (both rich

in  $\omega 3$  [n-3] fatty acids) can partially curtail age-related bone loss in SAMP8 mice (a progeria animal model), that interestingly coincided with decreased levels of inflammatory markers [10]. However, it is unknown whether preservation of bone mass in this progeria model is accompanied by reduced MAT volume.

To study the possible roles of MAT in the reported bone mass preservation associated with the supplementation of fatty acids we measured bone, MAT and HBM in the femoral bones of SAMP8 mice. We hypothesized that higher bone volume seen in feeding fatty acids in the SAMP8 mice is associated with low MAT and high HBM volumes.

## RESULTS

Of a total 53 mice in 4 groups, 10 were controls, 20 received FO, 11 received Sun flower oil (SFO) and 12 received borage oil supplements.

Overall MAT volume (including all groups) showed a strong negative association with HBM ( $r=-0.836$ ,  $p<0.001$ ), with the strongest association observed within SFO group ( $r=-0.949$ ;  $p<0.001$ ), followed by FO ( $r=-0.782$ ;  $p<0.001$ ), control ( $r=-0.758$ ;  $p=0.011$ ) and borage oil ( $r=-0.678$ ;  $p=0.015$ ) cohorts (Figure 1). There was an overall negative association between MAT and bone volume ( $r=-0.344$ ,  $p=0.013$ ), with associations being stronger in the control group ( $r=-0.586$ ,  $p=0.075$ ). None of the groups receiving fatty acid supplements showed significant associations between bone and MAT volumes ( $r=-0.225$  to  $0.332$ ;  $p=0.337$  to  $0.482$  for FO, SFO and borage oil groups respectively; Figure 1).

Despite higher bone% and HBM% and lower MAT% values of FO group compared to all other groups, after adjusting for multiple comparisons the differences did not reach significance (Table 1, and Figure 2). In addition, FO group had significantly ( $p<0.001$ ) higher bone volume fraction and lower MAT% compared to controls (Table 1).

In addition, marrow ratio of HBM was highest and MAT was lowest in the FO group compared to all other groups. After adjusting for multiple comparisons, the differences remained significant against controls ( $p\leq 0.001$ ; Table 1).

## DISCUSSION

In this study, FO prevented age-related bone and hematopoietic marrow loss by preventing the expansion of MAT. Lifelong supplementation of fatty acids possibly impeded the degree of negative associations of MAT against bone.

The findings of this study confirm the previous reports of the higher bone mineral density of SAMP8 mice fed FO - and borage oil to some degree [10]. However, as the most important finding, our results suggest possible roles that MAT expansion plays in both bone and HBM volume decline in this model; and importantly, the ability of  $\omega 3$  fatty acids (abundant in FO) to hinder MAT expansion and prevent the associated bone and HBM loss.

The core rationale for selecting 3 types of fatty acid treatment groups was to elucidate whether and how the  $\omega 3$  vs  $\omega 6$  fatty acids affect bone and marrow health; and whether the composition of  $\omega 3$  supplements plays a role. As per Table 2, the most important difference between the effective FO-enriched diet versus less/non-effective other diets was significantly lower  $\omega 6/\omega 3$  ratio and presence of 20:5 n-3 fatty acids in fish oil (vs. none in other diets; Table 2).

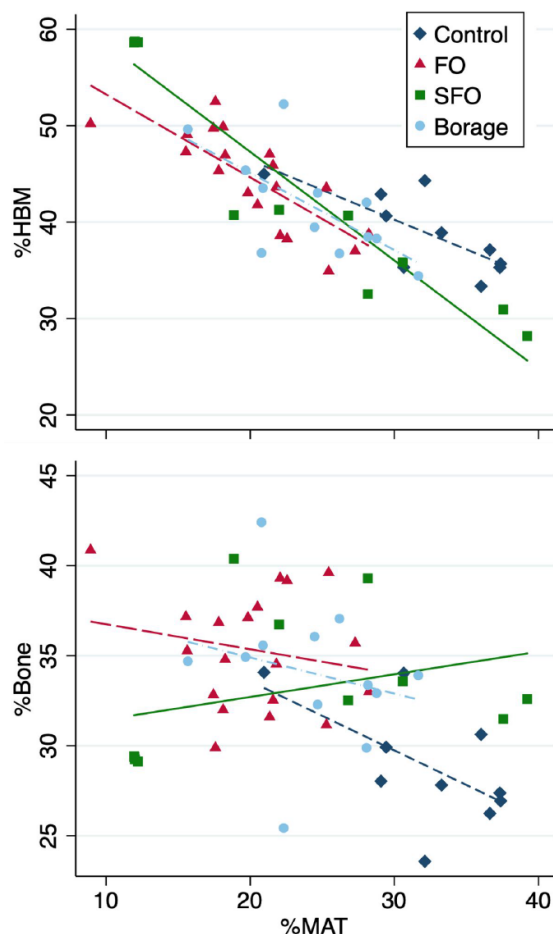


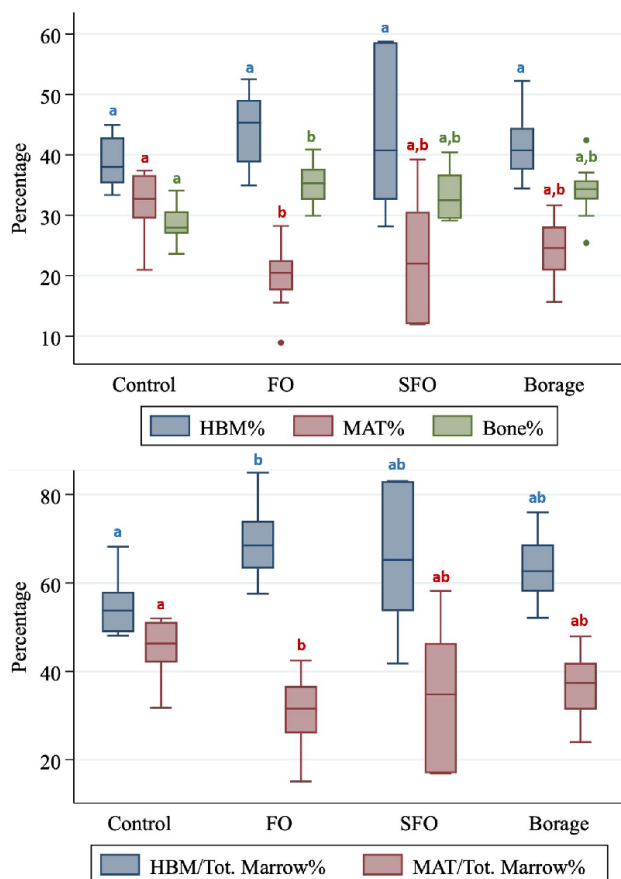
Figure 1. Associations of total tissue volume percentages of marrow adipose tissue (%MAT) vs hematopoietic bone marrow (%HBM, upper panel) and %bone (lower panel) in the four test diet groups.

**Table 1. Presented are median and IQR.**

Factor	Control (C) (n=10)	Fish oil (FO) group (n=20)	Sunflower oil (SFO) group (n=11)	Borage oil (B) group (n=12)	Overall <i>p</i> -value	Pair-wise comparisons <i>p</i> -values					
						<i>C</i>	<i>C</i>	<i>C</i>	<i>FO</i>	<i>FO</i>	<i>SFO</i>
						vs <i>FO</i>	vs <i>SFO</i>	vs <i>B</i>	vs <i>SFO</i>	vs <i>B</i>	vs <i>B</i>
MAT%	32.7 (29.4, 36.6)	20.5 (17.6, 22.6)	22.0 (12.0, 30.6)	24.6 (20.8, 28.1)	<0.001	<0.001	0.041	0.001	0.59	0.035	0.58
HBM%	38.0 (35.3, 42.9)	45.3 (38.8, 49.1)	40.7 (32.5, 58.7)	40.8 (37.6, 44.5)	0.12	NA*	NA*	NA*	NA*	NA*	NA*
Bone%	27.9 (26.9, 30.6)	35.3 (32.5, 37.7)	32.5 (29.4, 36.7)	34.3 (32.6, 35.8)	0.002	<0.001	0.029	0.01	0.074	0.39	0.3
HBM/total marrow%,	53.71 (48.8, 58.0)	68.44 (63.3, 74.0)	65.23 (53.6, 83.0)	62.64 (58.1, 68.7)	0.005	<0.001	0.091	0.01	0.53	0.068	0.71
MAT/total marrow%,	46.29 (42.0, 51.2)	31.56 (26.0, 36.7)	34.77 (17.0, 46.4)	37.36 (31.3, 41.9)	0.005	<0.001	0.091	0.01	0.53	0.068	0.71

\*Inter-group comparisons are not presented due to non-significant overall difference. However, it is worth noting that the mean HBM% of fish oil group is at least 12% higher than the other groups.

Due to adjustments for post-hoc pair-wise multiple comparisons (overall *p*-value), a *p*<=0.001 is considered statistically significant.



**Figure 2. Hematopoietic bone marrow (HBM%), marrow adipose tissue (MAT%) and Bone (Bone%) volume fractions (Upper panel) and total marrow volume fractions of HBM and MAT compared between four nutritional groups (Control; fish oil [FO], sunflower oil [SFO] and borage oil groups). Groups with different letter markers are significantly different after adjusting for multiple comparisons (*p*<0.001).**

Fat redistribution with aging (from subcutaneous fat into muscle, bone marrow and viscera) [6, 7, 11, 12] leads to a pathological state where adipocytes lose the ability to metabolize triglycerides, respond to hormones (e.g. insulin), and produce abnormal endo-, para- and auto-crine factors (e.g. inflammatory cytokines, leptin, adiponectin and resistin) [6, 7, 12]. Also, palmitic acid is profusely produced by MAT in human cells *in vitro* [2] and *in vivo* [13], which is toxic to osteoblasts [4] and capable of inducing a pro-inflammatory response within marrow [14]. In addition, it has been shown that adipose tissue releases only some or none of the expressed IL-6 and TNF $\alpha$  into the blood stream [15]. The reported lack of correlation between MAT and circulating cytokines [1] indicates high concentrations of such inflammatory mediators in the marrow milieu and auto/paracrine activity. The combined effects of inflammation and aging (inflammaging) on osteoporosis [16] and anemia [17] are well-known, and the above supports the concept that MAT can induce direct paracrine lipotoxicity and inflammation on bone and HBM tissues and drive their atrophy.

Polyunsaturated fatty acids and particularly the  $\omega$ 3 variety have already been linked to bone health in humans and animal models [18, 19]. Interestingly  $\omega$ 3 fatty acids are associated with preventing endoplasmic reticular stress and saturated fatty acid-mediated activation of innate immune processes such as production of interleukin (IL)-1, IL-6 and TNF, and finally bone preservation in ovariectomized mice [19–21]. Decreased osteoclastogenesis [19] and osteoclastic activity [10] has been shown as an effect of  $\omega$ 3 fatty acids supplementation. Considering the ability of inflammation [22, 23] and lipotoxicity (particularly by MAT) [24, 25] in inducing osteoclastogenesis, all evidence point at the potentials of the  $\omega$ 3 fatty acids on

**Table 2. The fatty acid composition of the four types of diets used in this study (% of total fatty acids).**

<b>Fatty acid carbon number</b>	<b>Standard diet (Harlan 2019)</b>	<b>Sunflower oil based diet</b>	<b>Borage oil enriched diet</b>	<b>Fish oil enriched diet</b>
12:0	0.71	0.00	0.00	0.00
14:0	0.15	0.05	0.05	0.09
15:0	0.00	0.00	0.00	0.00
16:0	11.35	5.11	6.58	5.03
17:0	0.00	0.02	0.01	0.01
18:0	3.24	2.75	2.89	2.97
19:0	0.00	0.00	0.00	0.00
20:0	0.25	0.19	0.16	0.16
22:0	0.08	0.24	0.12	0.12
<b>Total SFA</b>	15.78	8.36	9.81	8.38
16:1	0.15	0.08	0.14	0.19
<b>18:1 n-9</b>	<b>23.4</b>	<b>46.89</b>	<b>36.84</b>	<b>37.77</b>
18:1 n-7	0.00	0.00	0.21	0.52
20:1	0.54	0.34	1.17	0.73
22:1	0.05	0.00	0.54	0.00
24:1	0.00	0.00	0.34	0.00
Total MUFA	24.14	47.31	39.24	39.21
<b>18:2 n-6</b>	<b>43.40</b>	<b>54.23</b>	<b>42.04</b>	<b>40.51</b>
<b>18:3 n-6</b>	<b>0.00</b>	<b>0.00</b>	<b>5.19</b>	<b>0.00</b>
20:4 n-6	0.00	0.00	0.00	0.31
Total PUFA $\omega$ -6	54.23	42.04	48.59	40.82
<b>18:3 n-3</b>	<b>5.93</b>	<b>2.29</b>	<b>2.35</b>	<b>2.38</b>
18:4 n-3	0.01	0.00	0.00	0.52
20:4 n-3	0.00	0.00	0.00	0.32
<b>20:5 n-3</b>	<b>0.00</b>	<b>0.00</b>	<b>0.00</b>	<b>6.35</b>
21:5 n-3	0.00	0.00	0.00	0.22
22:5 n-3	0.00	0.00	0.00	0.31
22:6 n-3	0.00	0.00	0.00	1.50
Total PUFA $\omega$ -3	<b>5.94</b>	<b>2.29</b>	<b>2.35</b>	<b>11.60</b>
Total PUFA	60.16	44.33	50.94	52.42
<b>LA/ALA</b>	9.14	18.35	18.46	17.02
<b>n-6/n-3</b>	9.13	18.35	20.67	3.52
<b>Total percent</b>	100.00	100.00	100.00	100.00

Main lipid differences have been highlighted in bold.

blocking adipose tissue-induced inflammation, that preserves bone mass. In fact, fish oil suppresses bone resorption by inhibiting osteoclastogenesis by lowering expression of macrophage colony-stimulating factor (M-CSF), PU.1, microphthalmia-associated transcription factor (MITF), and importantly receptor for activation of NF $\kappa$ B (RANK) and RANK ligand (RANKL) [26].

Furthermore, Omega 6 fatty acids may stimulate the uptake and depot of extracellular fats within cells [27], and  $\omega$ 3 fatty acids may potentially be able to compete them and slow down adipogenesis and associated lipotoxicity and inflammaging in the marrow milieu. In agreement with this hypothesis, feeding mice with a FO-rich diet can decrease PPAR- $\gamma$  gene expression [10] in favour of osteoblastogenic and against adipogenic commitment of stem cells. Additionally, FO has been shown to reduce MAT volume [28] and promote hematopoiesis in the bone marrow [29]. However, to our knowledge the positive effects of FO on the prevention of MAT expansion and its protective effects on both bone and HBM - which is of high pathophysiological importance for both age-related bone loss and anemia - have not been reported before.

Considering the recent reports of very close direct interdigitated cellular processes and indirect contact between MAT, HBM, osteoblasts and bone lining cells with abundant fat vacuoles in-transit from MAT into these tissues [30], the chances of both inflammaging and lipotoxic effects of MAT on both bone and HBM is very likely.

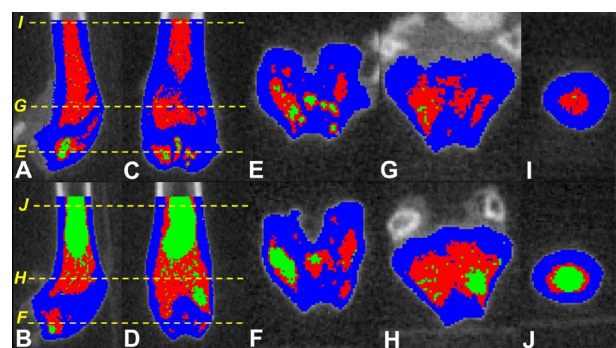
Our finding that prevention of MAT expansion can lead to higher ratios of both bone and HBM in this progeria model resonates with the findings of Bani Hassan et al. [1], who reported that MAT expansion in older men accompanies both bone and HBM atrophy, which can lead to both osteoporosis and anemia. These findings are of significance, as both anemia and osteoporosis are interrelated age-associated conditions that are of high prevalence in older people, with potentials to cause falls and fractures [31–35]. Blocking MAT expansion by nutrition, medication or a combination of the two approaches, may open new horizons for the prevention and treatment of both anemia and osteoporosis.

Other murine models of progeria (e.g. Lamin A- and Zmpste24-deficient,  $Wm^{-/-}$ ,  $Terc^{-/-}$ ,  $PolgA^{mut/mut}$ ,  $Klotho^{-/-}$ , PolG and XPD strains) also do show osteoporosis [36]. Interestingly, PolG and  $PolgA^{mut/mut}$  strains also show concomitant anemia and osteoporosis [36], that akin to SAMP8 model, may imply similar MAT lipotoxicity mechanisms inducing both conditions in both models. However, whether all other progeria

mice have both conditions or not has not been reported, and should be investigated case by case.

Unlike other reports [19, 37], we did not find evidence on the negative effects of  $\omega$ 6 fatty acids (SFO group) on bone, which agrees with the observation that  $\omega$ 6 fatty acids had no incremental effects on MAT either; that is also in agreement with previous reports of no difference in the bone mineral density of sunflower oil fed mice vs controls [10]. Albeit, the potentials of  $\omega$ 6 fatty acids to affect bone health is complex, and depends on their constituents (e.g. linoleic to linolenic acid ratios) or the ratios of  $\omega$ 3/ $\omega$ 6 [38].

Major strengths of this study are the longitudinal nature of the experiments that continued for the expected lifetime of the mice; however, we could not determine bone, MAT and HBM volumes at the beginning. We used a recently validated non-invasive method to quantify MAT *in situ* and analyzed a large number of CTs (~100 slices per femur) to cover both trabecular and cortical zones. Albeit, MAT variations may affect the measurements of bone density in single energy CT [39], but visual checking of the images were confirmatory of the reliability of the image analysis results. We did not measure the degree of fat infiltration into bone compartments (trabecular vs cortical), but based on our image analyses (Figure 3), both components, as well as HBM are impacted by fat infiltration. Future studies will greatly benefit from inclusion of other regions of interest (e.g. vertebral bodies), that would assist in clarifying which regions and component(s) of bone (trabecular or cortical) is affected most by MAT infiltration.



**Figure 3.** Screen shots of the tagged images of the distal femora of SAMP8 mice fed fish oil supplemented (upper panel) and control (lower panel) diets. Parasagittal (A and B) and coronal/frontal (C and D) plane sections: (E–J) (yellow) dotted lines represent the cross-sectional planes that images (E–J) display. Those fed fish oil-enriched diet appear to have higher bone (blue), hematopoietic marrow (red) and lower marrow adipose tissue (green) compared to controls.

In conclusion, this study provides further evidence on the possible roles of MAT expansion in the progression of age-related bone loss and anemia via the lipotoxic effects of MAT on bone and HBM in aging mice. Further molecular studies are required to investigate the crosstalk between tissues and the mechanisms that MAT affects both tissues.

## MATERIALS AND METHODS

### Ethics

All animal procedures were approved by an animal welfare committee and were conducted in accordance with the National Research Council's guidelines for the care and use of laboratory animals. Animals were housed in the animal laboratory of the INRA Research Center for Human Nutrition. They were housed in a controlled environment (12:12 h light/dark cycle, 20–22 °C, 50–60% relative humidity, 5 mice per cage with free access to water). The weaned puppies were delivered 1 month before study for acclimatization and were provided with free access to a standard growth diet for a month. At the end of the study the mice were euthanized by IP injection of lethal dose of sodium pentobarbital (0.1 ml/gr BW; CEVA Santé Animale, Libourne, France); and tissues were harvested, frozen and stocked prior to investigation.

### Animals

One-month-old female senescence accelerated mouse-prone 8 (SAMP8) were obtained from INRA-Dijon (UMR INRA-CNRS-Université de Bourgogne - Centre des Sciences du Goût et de l'Alimentation (CSGA) Dijon, France). The animals were housed in standard plastic cages as per ethical committee guidelines. After acclimatization, mice were provided with free access to a standard growth diet for a month. Animals were randomly divided in different groups and assigned to different diets for ten months ad libitum. Diet enrichment did not modify daily food intake significantly. To avoid a dramatic increase in SAMP8 mortality (usually at 12 months) of age [40], the duration of study was limited to ten months. Twenty femora and their  $\mu$ CT scans were available per group. Only intact bones were imaged and only images without artefacts were included in the study. Consequently, n=10, 20, 11 and 12 samples were analyzed for control, FO, SFO and borage oil groups, respectively.

### Diets

Diets were purchased from INRA (Jouy-en-Josas, France) or Harlan (Ganat, France). All diets were adjusted to be approximately isocaloric ( $\Delta$ b5%). The mice were fed

either a standard growth diet (Harlan Teklad Global 2019), or a sunflower oil (SFO) enriched diet that modulates the fatty acid composition in favour of  $\omega$ 6 (Table 3). Borage oil and fish oil were used to test the effect of a  $\gamma$ -linolenic acid (18:3  $\omega$ 6; GLA) enrichment or to reduce the  $\omega$ 6/ $\omega$ 3 ratio by providing eicosapentaenoic acid (20:5  $\omega$ 3; EPA) and docosahexaenoic (22:6  $\omega$ 3; DHA) respectively.

### Imaging and tissue volume quantification

Frozen femora were stripped of soft tissues and scanned using eXplore CT 120  $\mu$ CT scanner (GE Healthcare, Canada). Acquisition consisted of 360 views acquired in 1° increments collected in one full gantry rotation, with 20 ms exposure/view. X-ray tube was set at 100 kV and 50 mA. CT images were reconstructed using a modified cone-beam algorithm with an isotropic voxel of 45  $\mu$ m. One hundred  $\mu$ CT slices distal femora were analyzed per sample; and bone volume fraction, HBM% and MAT% were quantified as follows (Figure 1).

$\mu$ CT images were saved in DICOM format. All CT slices within the region of interest were analysed by a single blinded observer using Slice-O-Matic® (Tomovision, Montreal, Canada), previously validated for the measurement of various tissue volumes in different species [1, 41–43]. CT Hounsfield values for bone, MAT and HBM tissues were calculated. We used protocols previously validated in animals to quantify yellow/red marrow and bone using a single energy CT (MicroCT) and image analysis using Slice-O-Matic software [43]. Previous publications on the tissue thresholds were consulted, and final threshold ranges used for quantification of these parameters were further refined visually, using an image histogram [43–47]. Thus, the following resultant CT number thresholds were applied: MAT  $\leq$ 450; HBM 451-1900; and bone  $\geq$ 1901 Hounsfield units (Figure 3).

Ratios of tissue volumes/total tissue volume (i.e. bone%, HBM% and MAT%) and ratios of HBM/total marrow% and MAT/total marrow% volumes were calculated.

### Statistics

Data are presented as median and interquartile range. Scatter plots were visually inspected to confirm linear relationship between variables and Pearson's correlation coefficient is reported. Between group comparisons were performed using Kruskal-Wallis test with post hoc rank sum tests for pairwise comparisons with p values adjusted using Bonferroni procedure. Analyses were performed using Stata 15.1 (StataCorp. 2017. Stata

**Table 3. Formulations of the diets given to for study groups.**

Ingredient (g/100 g diet)	Standard diet (Harlan 2019)	Sunflower oil based diet	Borage oil enriched diet	Fish oil enriched diet
Wheat starch	55.24	59.14	56.79	56.79
Casein	19.00	19.20	19.20	19.20
Sucrose	4.16	4.16	4.16	4.16
Fiber (cellulose)	3.60	3.50	3.50	3.50
DL methionine	3.30	0.30	0.30	0.30
Choline bitartrate	0.20	0.20	0.20	0.20
Mineral mix	3.50	2.50	2.50	2.50
Vitamin mix	1.00	1.00	1.00	1.00
Sunflower oil	0.00	5.45	5.62	6.73
Canola oil	0.00	2.73	3.37	3.37
Borage oil	0.00	0.00	2.79	0.00
Fish oil	0.00	0.00	0.00	1.68
Oleisol oil	0.00	1.82	0.57	0.57
Soybean oil	10.00	0.00	0.00	0.00
Energy (cal)	420	428	440	440

From I.N.R.A. (Jouy en Josas, France); casein (Union des caséinerie, Surgères, France), cornstarch (Cerestar, Saint-Maur, France), cellulose (Durieux, Marne la Vallée, France), oil (Bailly, Aulnay sous Bois, France), vitamin mixture (Roche, Neuilly sur Seine, France), mineral mixture (Prolabo, Fontenay sous bois, France), DL-methionine and choline bitartrate (Jerafrance, Jeufosse, France).

Statistical Software: Release 15. College Station, TX: StataCorp LLC). Significance was set to  $p \leq 0.05$ ; and for multiple comparisons  $p$  was set to  $\leq 0.001$ .

### Abbreviations

MAT: Marrow adipose tissue; HBM: hematopoietic bone marrow; FO: fish oil; SFO: sunflower oil;  $\mu$ CT: microcomputed tomography; IL: interleukin.

### AUTHOR CONTRIBUTIONS

GD and YW were involved in conception of the study. Animal experiments and acquisition of  $\mu$ CT scans were done by FW, VC and YW. Image analyses were carried out by MA and OD. EB and GD were principally involved in the interpretation of the results. EB and SV conducted statistical analyses and drafted the manuscript.

### ACKNOWLEDGMENTS

We are thankful to Ms. Paula Casas for proof-reading this manuscript.

### CONFLICTS OF INTEREST

The authors have no conflict of interest or any competing financial interests. We have full control of

all primary data and that agree to allow the journal to review the data if required.

### FUNDING

This project was partially supported by Australian Institute for Musculoskeletal Science (AIMSS). EB holds an Australian Medical Research Frontiers Fund Fellowship (MRFF: MACH-RART scheme 2019).

### REFERENCES

1. Bani Hassan E, Demontiero O, Vogrin S, Ng A, Duque G. Marrow Adipose Tissue in Older Men: Association with Visceral and Subcutaneous Fat, Bone Volume, Metabolism, and Inflammation. *Calcif Tissue Int.* 2018; 103:164–174. <https://doi.org/10.1007/s00223-018-0412-6> PMID:29582133
2. Elbaz A, Wu X, Rivas D, Gimble JM, Duque G. Inhibition of fatty acid biosynthesis prevents adipocyte lipotoxicity on human osteoblasts in vitro. *J Cell Mol Med.* 2010; 14:982–91. <https://doi.org/10.1111/j.1582-4934.2009.00751.x> PMID:19382912
3. Gasparrini M, Rivas D, Elbaz A, Duque G. Differential expression of cytokines in subcutaneous and marrow fat



- of aging C57BL/6J mice. *Exp Gerontol.* 2009; 44:613–18.  
<https://doi.org/10.1016/j.exger.2009.05.009>  
PMID:[19501151](https://pubmed.ncbi.nlm.nih.gov/19501151/)
4. Gunaratnam K, Vidal C, Gimble JM, Duque G. Mechanisms of palmitate-induced lipotoxicity in human osteoblasts. *Endocrinology.* 2014; 155:108–16.  
<https://doi.org/10.1210/en.2013-1712>  
PMID:[24169557](https://pubmed.ncbi.nlm.nih.gov/24169557/)
  5. Singh L, Tyagi S, Myers D, Duque G. Good, Bad, or Ugly: the Biological Roles of Bone Marrow Fat. *Curr Osteoporos Rep.* 2018; 16:130–37.  
<https://doi.org/10.1007/s11914-018-0427-y>  
PMID:[29476394](https://pubmed.ncbi.nlm.nih.gov/29476394/)
  6. Guo W, Pirtskhalava T, Tchkonja T, Xie W, Thomou T, Han J, Wang T, Wong S, Cartwright A, Hegardt FG, Corkey BE, Kirkland JL. Aging results in paradoxical susceptibility of fat cell progenitors to lipotoxicity. *Am J Physiol Endocrinol Metab.* 2007; 292:E1041–51.  
<https://doi.org/10.1152/ajpendo.00557.2006>  
PMID:[17148751](https://pubmed.ncbi.nlm.nih.gov/17148751/)
  7. Kirkland JL, Tchkonja T, Pirtskhalava T, Han J, Karagiannides I. Adipogenesis and aging: does aging make fat go MAD? *Exp Gerontol.* 2002; 37:757–67.  
[https://doi.org/10.1016/S0531-5565\(02\)00014-1](https://doi.org/10.1016/S0531-5565(02)00014-1)  
PMID:[12175476](https://pubmed.ncbi.nlm.nih.gov/12175476/)
  8. Schwartz AV, Sigurdsson S, Hue TF, Lang TF, Harris TB, Rosen CJ, Vittinghoff E, Siggeirsdottir K, Sigurdsson G, Oskarsdottir D, Shet K, Palermo L, Gudnason V, Li X. Vertebral bone marrow fat associated with lower trabecular BMD and prevalent vertebral fracture in older adults. *J Clin Endocrinol Metab.* 2013; 98:2294–300.  
<https://doi.org/10.1210/jc.2012-3949>  
PMID:[23553860](https://pubmed.ncbi.nlm.nih.gov/23553860/)
  9. Martin RB, Chow BD, Lucas PA. Bone marrow fat content in relation to bone remodeling and serum chemistry in intact and ovariectomized dogs. *Calcif Tissue Int.* 1990; 46:189–94.  
<https://doi.org/10.1007/BF02555043>  
PMID:[2106378](https://pubmed.ncbi.nlm.nih.gov/2106378/)
  10. Wauquier F, Barquissau V, Léotoing L, Davicco MJ, Lebecque P, Mercier S, Philippe C, Miot-Noirault E, Chardigny JM, Morio B, Wittrant Y, Coxam V. Borage and fish oils lifelong supplementation decreases inflammation and improves bone health in a murine model of senile osteoporosis. *Bone.* 2012; 50:553–61.  
<https://doi.org/10.1016/j.bone.2011.05.030>  
PMID:[21664309](https://pubmed.ncbi.nlm.nih.gov/21664309/)
  11. Schwartz RS, Shuman WP, Bradbury VL, Cain KC, Fellingham GW, Beard JC, Kahn SE, Stratton JR, Cerqueira MD, Abrass IB. Body fat distribution in healthy young and older men. *J Gerontol.* 1990; 45:M181–85.  
<https://doi.org/10.1093/geronj/45.6.M181>  
PMID:[2229940](https://pubmed.ncbi.nlm.nih.gov/2229940/)
  12. Zamboni M, Mazzali G, Zoico E, Harris TB, Meigs JB, Di Francesco V, Fantin F, Bissoli L, Bosello O. Health consequences of obesity in the elderly: a review of four unresolved questions. *Int J Obes.* 2005; 29:1011–29.  
<https://doi.org/10.1038/sj.ijo.0803005>  
PMID:[15925957](https://pubmed.ncbi.nlm.nih.gov/15925957/)
  13. Ren J, Dimitrov I, Sherry AD, Malloy CR. Composition of adipose tissue and marrow fat in humans by 1H NMR at 7 Tesla. *J Lipid Res.* 2008; 49:2055–62.  
<https://doi.org/10.1194/jlr.D800010-JLR200>  
PMID:[18509197](https://pubmed.ncbi.nlm.nih.gov/18509197/)
  14. Gillet C, Spruyt D, Rigutto S, Dalla Valle A, Berlier J, Louis C, Debier C, Gaspard N, Malaisse WJ, Gangji V, Rasschaert J. Oleate Abrogates Palmitate-Induced Lipotoxicity and Proinflammatory Response in Human Bone Marrow-Derived Mesenchymal Stem Cells and Osteoblastic Cells. *Endocrinology.* 2015; 156:4081–93.  
<https://doi.org/10.1210/en.2015-1303>  
PMID:[26327577](https://pubmed.ncbi.nlm.nih.gov/26327577/)
  15. Mohamed-Ali V, Goodrick S, Rawesh A, Katz DR, Miles JM, Yudkin JS, Klein S, Coppel SW. Subcutaneous adipose tissue releases interleukin-6, but not tumor necrosis factor-alpha, in vivo. *J Clin Endocrinol Metab.* 1997; 82:4196–200.  
<https://doi.org/10.1210/jcem.82.12.4450>  
PMID:[9398739](https://pubmed.ncbi.nlm.nih.gov/9398739/)
  16. Ginaldi L, Di Benedetto MC, De Martinis M. Osteoporosis, inflammation and ageing. *Immun Ageing.* 2005; 2:14.  
<https://doi.org/10.1186/1742-4933-2-14>  
PMID:[16271143](https://pubmed.ncbi.nlm.nih.gov/16271143/)
  17. Nemeth E, Ganz T. Anemia of inflammation. *Hematol Oncol Clin North Am.* 2014; 28:671–81.  
<https://doi.org/10.1016/j.hoc.2014.04.005>  
PMID:[25064707](https://pubmed.ncbi.nlm.nih.gov/25064707/)
  18. Albertazzi P, Coupland K. Polyunsaturated fatty acids. Is there a role in postmenopausal osteoporosis prevention? *Maturitas.* 2002; 42:13–22.  
[https://doi.org/10.1016/S0378-5122\(02\)00022-1](https://doi.org/10.1016/S0378-5122(02)00022-1)  
PMID:[12020975](https://pubmed.ncbi.nlm.nih.gov/12020975/)
  19. Sun D, Krishnan A, Zaman K, Lawrence R, Bhattacharya A, Fernandes G. Dietary n-3 fatty acids decrease osteoclastogenesis and loss of bone mass in ovariectomized mice. *J Bone Miner Res.* 2003; 18:1206–16.  
<https://doi.org/10.1359/jbmr.2003.18.7.1206>  
PMID:[12854830](https://pubmed.ncbi.nlm.nih.gov/12854830/)
  20. Kalupahana NS, Claycombe KJ, Moustaid-Moussa N. (n-

- 3) Fatty acids alleviate adipose tissue inflammation and insulin resistance: mechanistic insights. *Adv Nutr.* 2011; 2:304–16.  
<https://doi.org/10.3945/an.111.000505> PMID:[22332072](https://pubmed.ncbi.nlm.nih.gov/22332072/)
21. Endres S, Ghorbani R, Kelley VE, Georgilis K, Lonnemann G, van der Meer JW, Cannon JG, Rogers TS, Klempner MS, Weber PC, Schaefer EJ, Wolff SM, Dinarello CA. The effect of dietary supplementation with n-3 polyunsaturated fatty acids on the synthesis of interleukin-1 and tumor necrosis factor by mononuclear cells. *N Engl J Med.* 1989; 320:265–71.  
<https://doi.org/10.1056/NEJM198902023200501> PMID:[2783477](https://pubmed.ncbi.nlm.nih.gov/2783477/)
22. Axmann R, Böhm C, Krönke G, Zwerina J, Smolen J, Schett G. Inhibition of interleukin-6 receptor directly blocks osteoclast formation in vitro and in vivo. *Arthritis Rheum.* 2009; 60:2747–56.  
<https://doi.org/10.1002/art.24781> PMID:[19714627](https://pubmed.ncbi.nlm.nih.gov/19714627/)
23. Ma T, Miyanishi K, Suen A, Epstein NJ, Tomita T, Smith RL, Goodman SB. Human interleukin-1-induced murine osteoclastogenesis is dependent on RANKL, but independent of TNF- $\alpha$ . *Cytokine.* 2004; 26:138–44.  
<https://doi.org/10.1016/j.cyto.2004.02.001> PMID:[15135808](https://pubmed.ncbi.nlm.nih.gov/15135808/)
24. Halade GV, El Jamali A, Williams PJ, Fajardo RJ, Fernandes G. Obesity-mediated inflammatory microenvironment stimulates osteoclastogenesis and bone loss in mice. *Exp Gerontol.* 2011; 46:43–52.  
<https://doi.org/10.1016/j.exger.2010.09.014> PMID:[20923699](https://pubmed.ncbi.nlm.nih.gov/20923699/)
25. Hozumi A, Osaki M, Goto H, Sakamoto K, Inokuchi S, Shindo H. Bone marrow adipocytes support dexamethasone-induced osteoclast differentiation. *Biochem Biophys Res Commun.* 2009; 382:780–84.  
<https://doi.org/10.1016/j.bbrc.2009.03.111> PMID:[19324007](https://pubmed.ncbi.nlm.nih.gov/19324007/)
26. Nakanishi A, Iitsuka N, Tsukamoto I. Fish oil suppresses bone resorption by inhibiting osteoclastogenesis through decreased expression of M-CSF, PU.1, MITF and RANK in ovariectomized rats. *Mol Med Rep.* 2013; 7:1896–903.  
<https://doi.org/10.3892/mmr.2013.1446> PMID:[23625116](https://pubmed.ncbi.nlm.nih.gov/23625116/)
27. Riera-Heredia N, Lutfi E, Gutiérrez J, Navarro I, Capilla E. Fatty acids from fish or vegetable oils promote the adipogenic fate of mesenchymal stem cells derived from gilthead sea bream bone potentially through different pathways. *PLoS One.* 2019; 14:e0215926.  
<https://doi.org/10.1371/journal.pone.0215926> PMID:[31017945](https://pubmed.ncbi.nlm.nih.gov/31017945/)
28. Pritchett JW. Statins and dietary fish oils improve lipid composition in bone marrow and joints. *Clin Orthop Relat Res.* 2007; 456:233–37.  
<https://doi.org/10.1097/BLO.0b013e31802cfa9e> PMID:[17496750](https://pubmed.ncbi.nlm.nih.gov/17496750/)
29. Xia S, Li XP, Cheng L, Han MT, Zhang MM, Shao QX, Xu HX, Qi L. Fish Oil-Rich Diet Promotes Hematopoiesis and Alters Hematopoietic Niche. *Endocrinology.* 2015; 156:2821–30.  
<https://doi.org/10.1210/en.2015-1258> PMID:[26061726](https://pubmed.ncbi.nlm.nih.gov/26061726/)
30. Robles H, Park S, Joens MS, Fitzpatrick JA, Craft CS, Scheller EL. Characterization of the bone marrow adipocyte niche with three-dimensional electron microscopy. *Bone.* 2019; 118:89–98.  
<https://doi.org/10.1016/j.bone.2018.01.020> PMID:[29366839](https://pubmed.ncbi.nlm.nih.gov/29366839/)
31. Gaskell H, Derry S, Andrew Moore R, McQuay HJ. Prevalence of anaemia in older persons: systematic review. *BMC Geriatr.* 2008; 8:1–1.  
<https://doi.org/10.1186/1471-2318-8-1> PMID:[18194534](https://pubmed.ncbi.nlm.nih.gov/18194534/)
32. Espallargues M, Sampietro-Colom L, Estrada MD, Solà M, del Río L, Setoain J, Granados A. Identifying bone-mass-related risk factors for fracture to guide bone densitometry measurements: a systematic review of the literature. *Osteoporos Int.* 2001; 12:811–22.  
<https://doi.org/10.1007/s001980170031> PMID:[11716183](https://pubmed.ncbi.nlm.nih.gov/11716183/)
33. Goerss JB, Kim CH, Atkinson EJ, Eastell R, O’Fallon WM, Melton LJ 3rd. Risk of fractures in patients with pernicious anemia. *J Bone Miner Res.* 1992; 7:573–79.  
<https://doi.org/10.1002/jbmr.5650070514> PMID:[1615763](https://pubmed.ncbi.nlm.nih.gov/1615763/)
34. Duh MS, Mody SH, Lefebvre P, Woodman RC, Buteau S, Piech CT. Anaemia and the risk of injurious falls in a community-dwelling elderly population. *Drugs Aging.* 2008; 25:325–34.  
<https://doi.org/10.2165/00002512-200825040-00005> PMID:[18361542](https://pubmed.ncbi.nlm.nih.gov/18361542/)
35. Valderrábano RJ, Lee J, Lui LY, Hoffman AR, Cummings SR, Orwoll ES, Wu JY, and Osteoporotic Fractures in Men (MrOS) Study Research Group. Older Men With Anemia Have Increased Fracture Risk Independent of Bone Mineral Density. *J Clin Endocrinol Metab.* 2017; 102:2199–206.  
<https://doi.org/10.1210/jc.2017-00266> PMID:[28368469](https://pubmed.ncbi.nlm.nih.gov/28368469/)
36. Köks S, Dogan S, Tuna BG, González-Navarro H, Potter P, Vandenbroucke RE. Mouse models of ageing and their relevance to disease. *Mech Ageing Dev.* 2016; 160:41–53.  
<https://doi.org/10.1016/j.mad.2016.10.001> PMID:[27717883](https://pubmed.ncbi.nlm.nih.gov/27717883/)

37. Weiss LA, Barrett-Connor E, von Mühlen D. Ratio of n-6 to n-3 fatty acids and bone mineral density in older adults: the Rancho Bernardo Study. *Am J Clin Nutr.* 2005; 81:934–38.  
<https://doi.org/10.1093/ajcn/81.4.934>  
PMID:[15817874](https://pubmed.ncbi.nlm.nih.gov/15817874/)
38. Wauquier F, Léotoing L, Philippe C, Spilmont M, Coxam V, Wittrant Y. Pros and cons of fatty acids in bone biology. *Prog Lipid Res.* 2015; 58:121–45.  
<https://doi.org/10.1016/j.plipres.2015.03.001>  
PMID:[25835096](https://pubmed.ncbi.nlm.nih.gov/25835096/)
39. Kuiper JW, van Kuijk C, Grashuis JL, Ederveen AG, Schütte HE. Accuracy and the influence of marrow fat on quantitative CT and dual-energy X-ray absorptiometry measurements of the femoral neck in vitro. *Osteoporos Int.* 1996; 6:25–30.  
<https://doi.org/10.1007/BF01626534>  
PMID:[8845596](https://pubmed.ncbi.nlm.nih.gov/8845596/)
40. Lo WC, Chiou JF, Gelovani JG, Cheong ML, Lee CM, Liu HY, Wu CH, Wang MF, Lin CT, Deng WP. Transplantation of embryonic fibroblasts treated with platelet-rich plasma induces osteogenesis in SAMP8 mice monitored by molecular imaging. *J Nucl Med.* 2009; 50:765–73.  
<https://doi.org/10.2967/jnumed.108.057372>  
PMID:[19372470](https://pubmed.ncbi.nlm.nih.gov/19372470/)
41. Chowdhury B, Sjöström L, Alpsten M, Kostanty J, Kvist H, Löfgren R. A multicompartiment body composition technique based on computerized tomography. *Int J Obes Relat Metab Disord.* 1994; 18:219–34.  
PMID:[8044196](https://pubmed.ncbi.nlm.nih.gov/8044196/)
42. Demerath EW, Ritter KJ, Couch WA, Rogers NL, Moreno GM, Choh A, Lee M, Remsberg K, Czerwinski SA, Chumlea WC, Siervogel RM, Towne B. Validity of a new automated software program for visceral adipose tissue estimation. *Int J Obes.* 2007; 31:285–91.  
<https://doi.org/10.1038/sj.ijo.0803409>  
PMID:[16770332](https://pubmed.ncbi.nlm.nih.gov/16770332/)
43. Demontiero O, Li W, Thembani E, Duque G. Validation of noninvasive quantification of bone marrow fat volume with microCT in aging rats. *Exp Gerontol.* 2011; 46:435–40.  
<https://doi.org/10.1016/j.exger.2011.01.001>  
PMID:[21256205](https://pubmed.ncbi.nlm.nih.gov/21256205/)
44. Després JP. Abdominal obesity as important component of insulin-resistance syndrome. *Nutrition.* 1993; 9:452–59. PMID:[8286886](https://pubmed.ncbi.nlm.nih.gov/8286886/)
45. Hounsfield GN. Computed medical imaging. *Science.* 1980; 210:22–28.  
<https://doi.org/10.1126/science.6997993>  
PMID:[6997993](https://pubmed.ncbi.nlm.nih.gov/6997993/)
46. White DR, Woodard HQ, Hammond SM. Average soft-tissue and bone models for use in radiation dosimetry. *Br J Radiol.* 1987; 60:907–13.  
<https://doi.org/10.1259/0007-1285-60-717-907>  
PMID:[3664185](https://pubmed.ncbi.nlm.nih.gov/3664185/)
47. Schneider W, Bortfeld T, Schlegel W. Correlation between CT numbers and tissue parameters needed for Monte Carlo simulations of clinical dose distributions. *Phys Med Biol.* 2000; 45:459–78.  
<https://doi.org/10.1088/0031-9155/45/2/314>  
PMID:[10701515](https://pubmed.ncbi.nlm.nih.gov/10701515/)