



# biomed VO

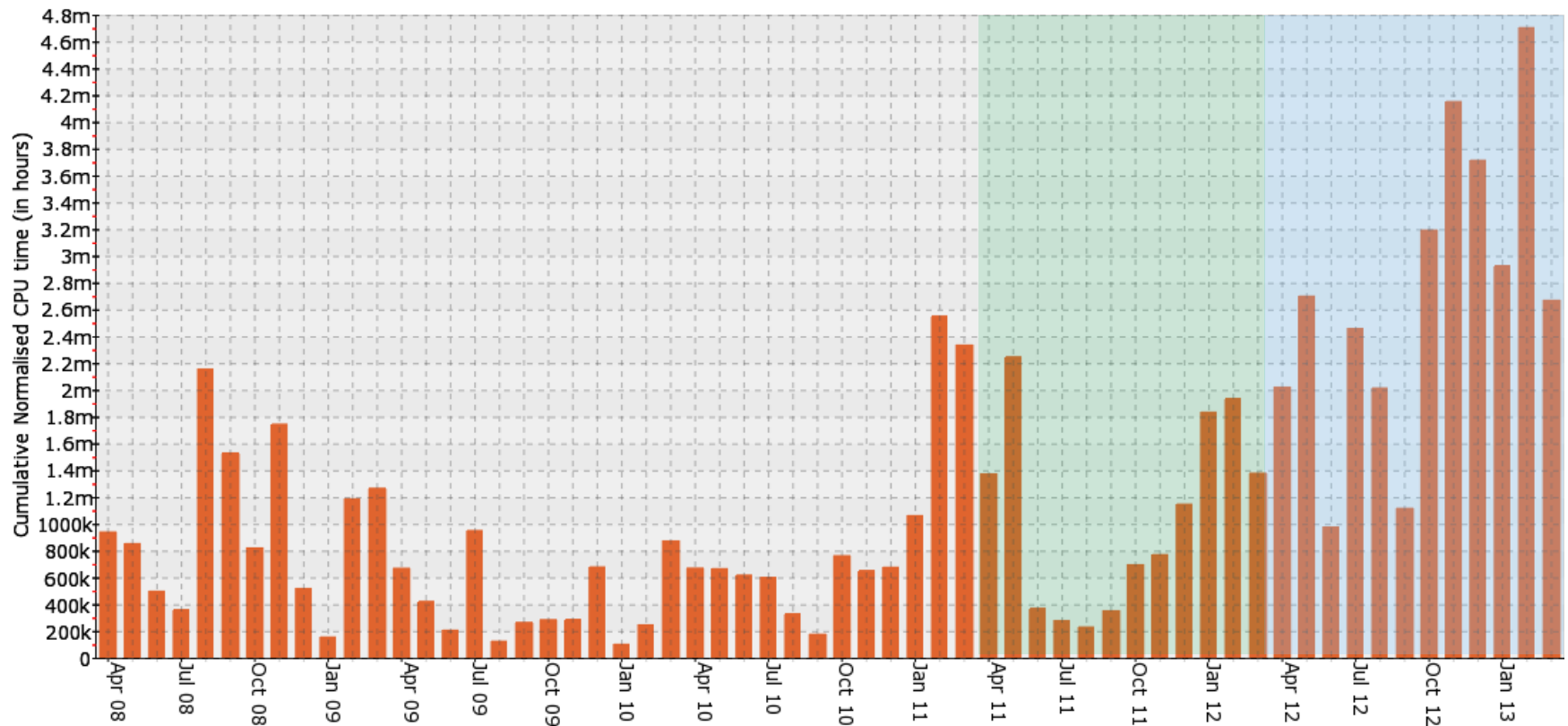
## Operational status & issues

EGI Community Forum 2013  
Franck Michel, Tristan Glatard



# Activity Summary - CPU

- 2012-04 to 2013-03: 16M jobs, 32.7Mh norm. CPU (3732y)
- 2011-04 to 2012-03: 5M jobs, 12.6Mh norm. CPU (1438y)

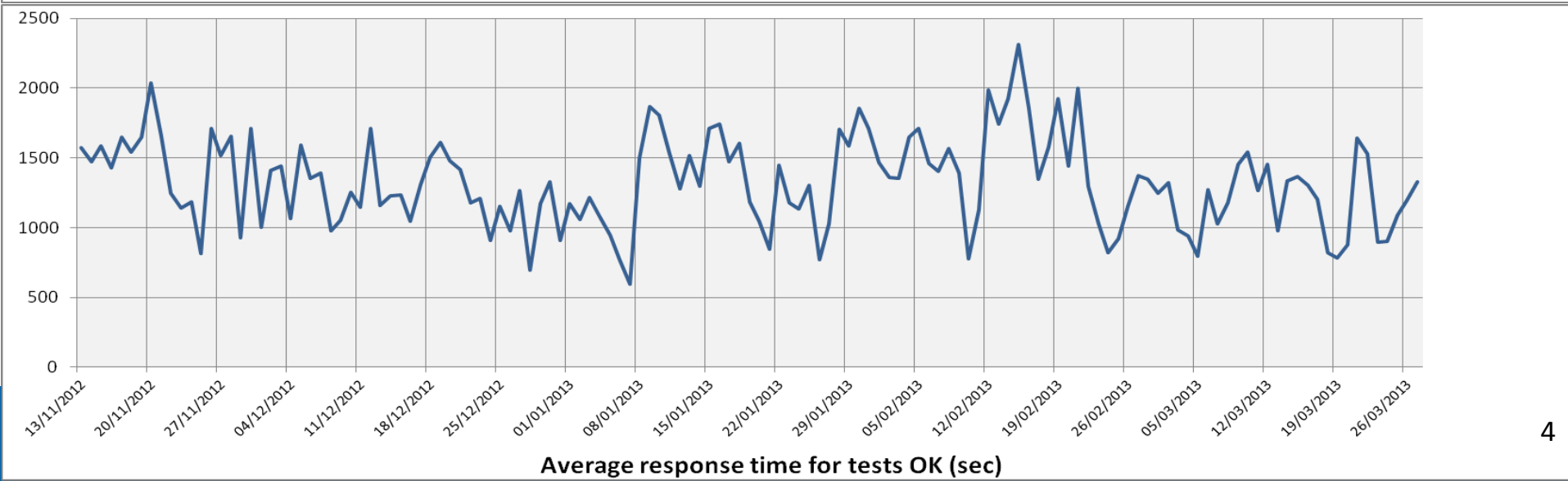
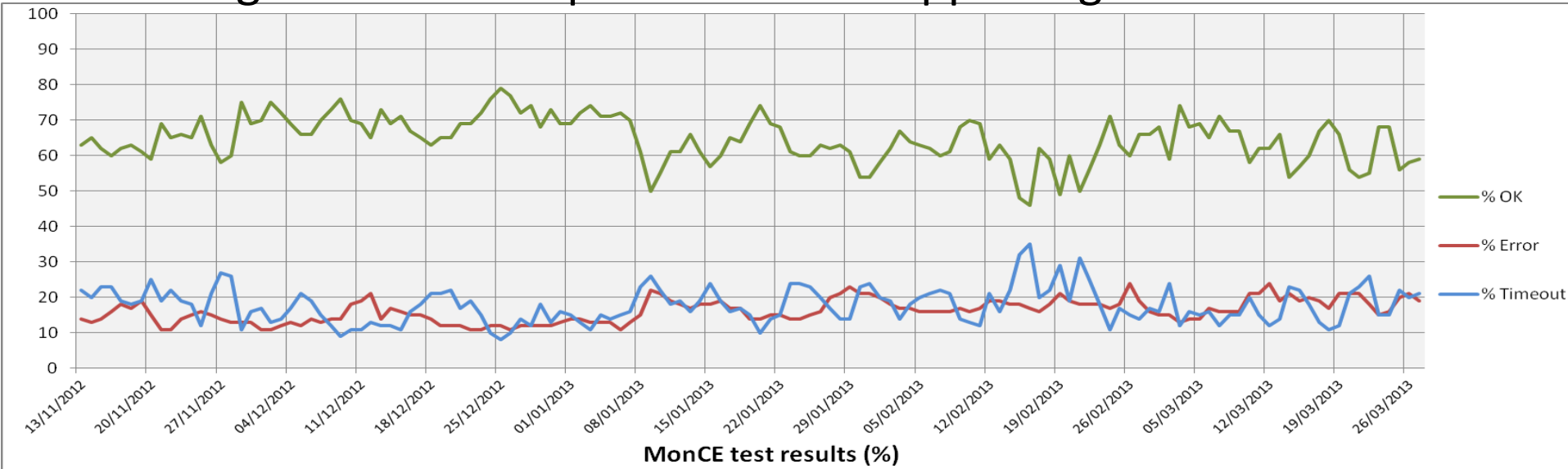


(source EGI Accounting Portal)

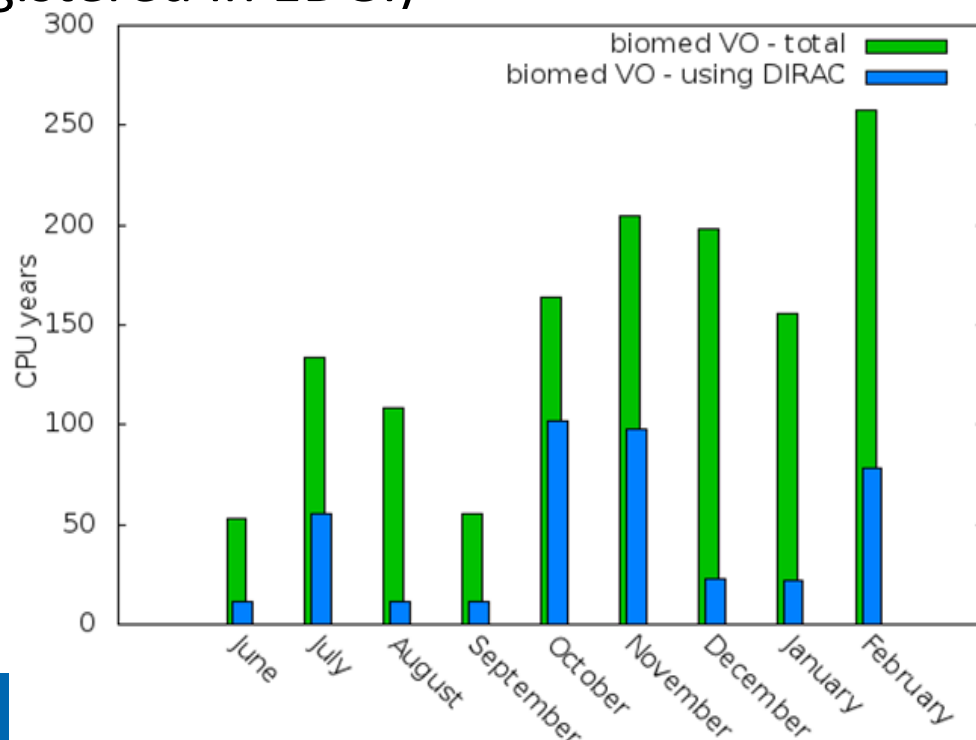
## Monitoring Running vs. Waiting jobs on supporting CEs



## Monitoring status and response time of supporting CEs

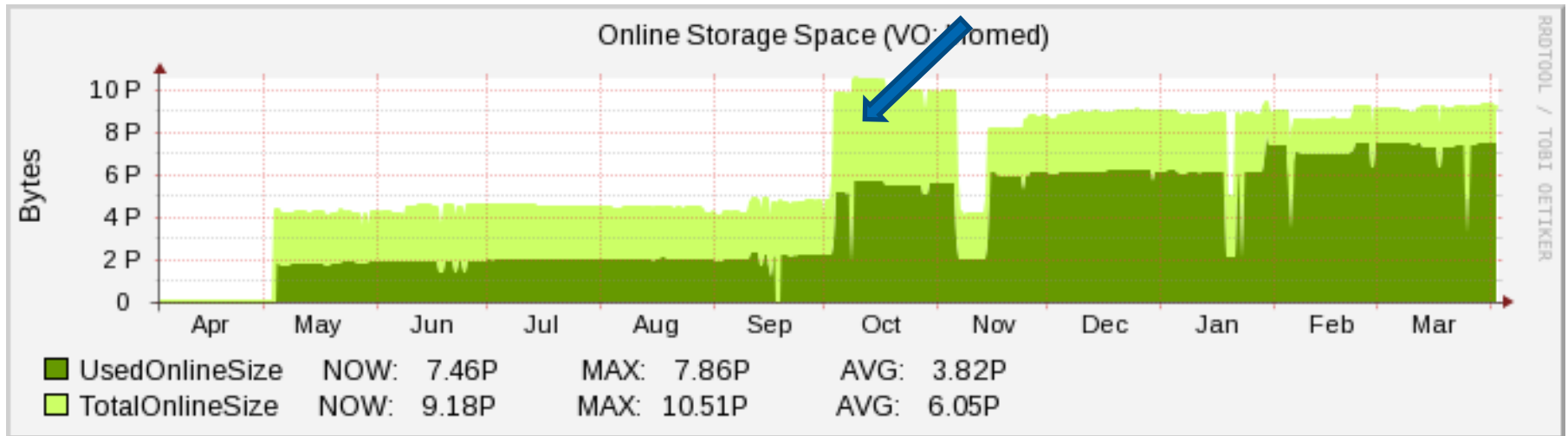


- 1 biomed-dedicated cluster certified at Creatis
- Integration of EDGI desktop grid CE (3K to 4K cores)
  - Testing in progress, in collab. with DIRAC and EDGI teams
  - Status: successful on registered application, ongoing test trying to execute a custom job (not registered in EDGI)
- Use of DIRAC instance provided by French NGI encouraged in biomed
  - Lack of a java API for DIRAC



- 7.5 PB used out of 9.2 PB

[eymir.grid.metu.edu.tr](http://eymir.grid.metu.edu.tr)  
from 0.8PB to 6+ PB



- No need for more space
- Need for better tools to manage usual storage issues
  - facilitate cleanup, dark data, user quotas, prevention of full SEs, file migration (decommissioning), file replication to ensure file availability

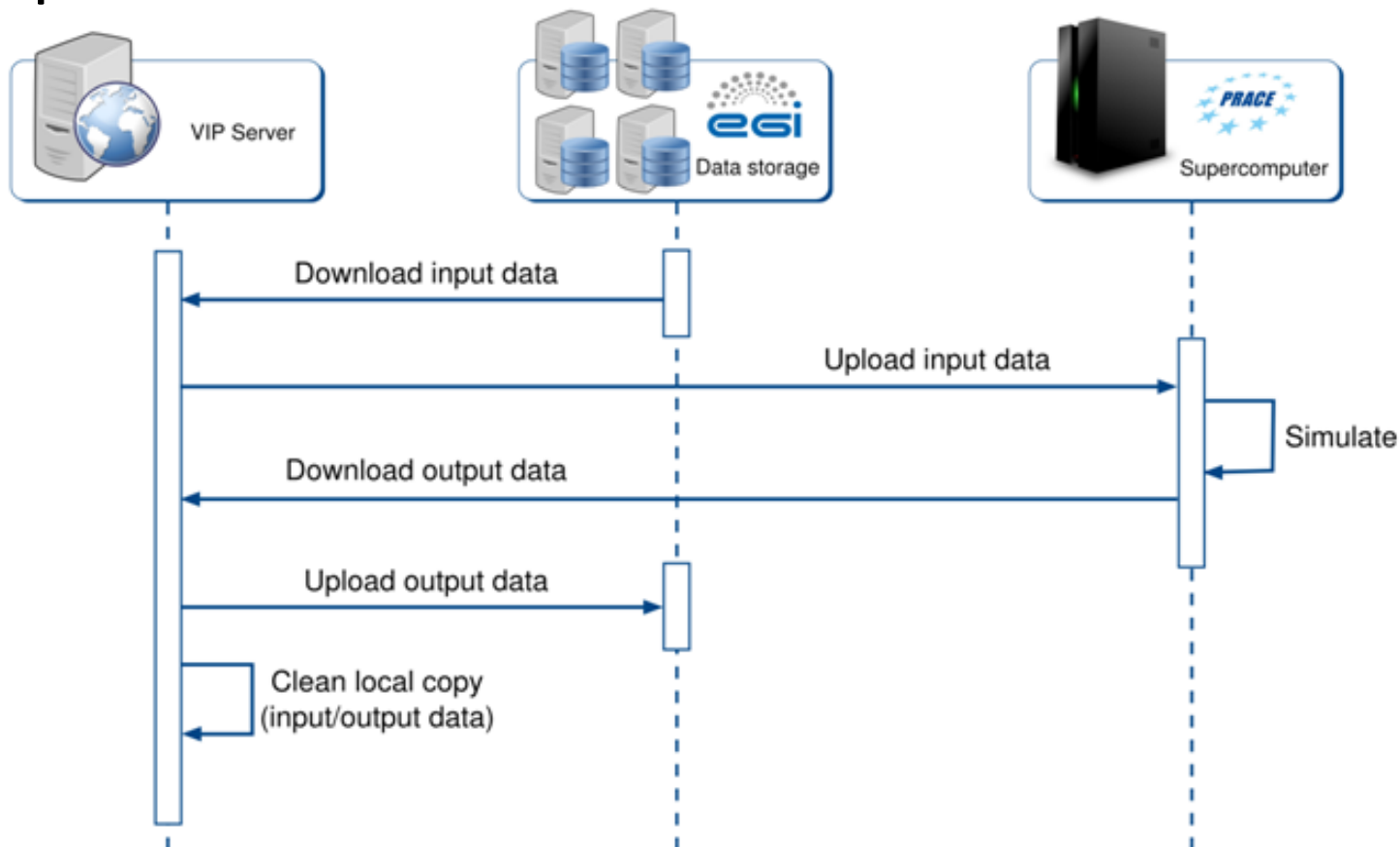
(source GStat2)

- Ongoing study on how to deal with LFC/SE inconsistencies (dark data, ghosts)
  - To be addressed within VAPOR mini-project
- Migration from LFC to DIRAC file catalog
  - Motivations:
    - Cope with possible end of LFC support
    - Detect and handle dark data
  - Testing in progress, in collaboration with DIRAC team
    - Current status: trying to add/get a file

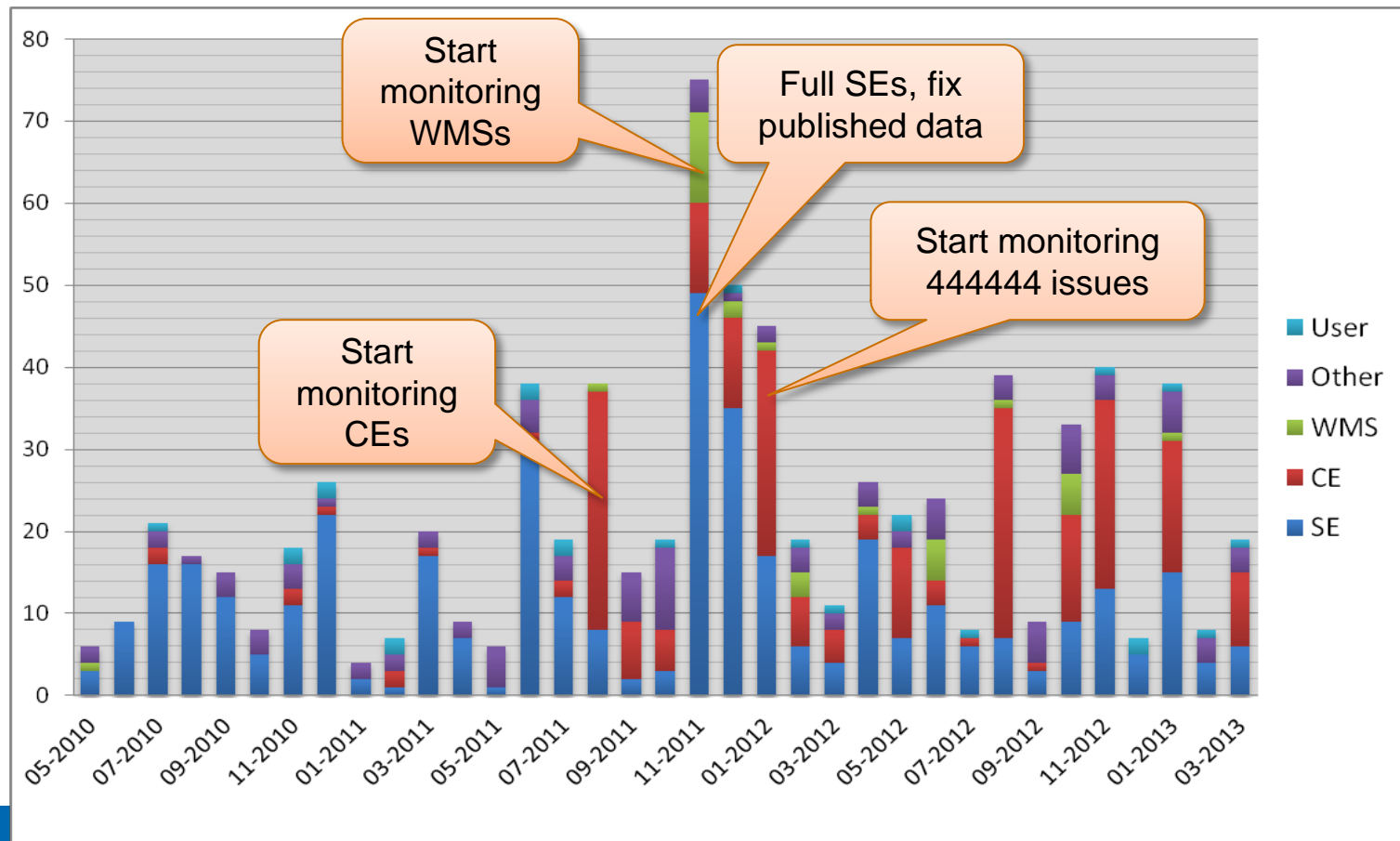
- Targeted communities
  - Small to medium-size VOs
  - No or few dedicated support
  - Fragmented user groups, scattered scientific activities
  - Opportunistic usage of resources
- Goals
  - Community users management
  - Operations for technical support teams
    - Status indicators, statistical reports, Data Management
  - Accounting:
    - Community & VO sub-group resource usage,
    - Projection of future needs



- Data interoperability prototype between EGI and PRACE
- Goal: process on PRACE data stored on EGI



- 444444 issue: default number of jobs W and R published by CEs



A yellow sticky note is pinned to the white background with a red pushpin. The words 'Thank you' are written in a black, cursive font on the note.

Thank  
you

LSGC	<a href="http://lsgc.org/en/LSGC:home">http://lsgc.org/en/LSGC:home</a>
biomed VO Support team	biomed-technical-support [at] googlegroups [dot] com
biomed VO Manager	biomed-vo-managers [at] googlegroups [dot] com