



Microstructural analyses of the posterior cerebellar lobules in relapsing-onset multiple sclerosis and their implication in cognitive impairment

Amandine Moroso, Aurélie Ruet, Delphine Lamargue-Hamel, Fanny Munsch, Mathilde Deloire, Pierrick Coupé, Julie Charré-Morin, Aurore Saubusse, Jean-Christophe Ouallet, Vincent Planche, et al.

► To cite this version:

Amandine Moroso, Aurélie Ruet, Delphine Lamargue-Hamel, Fanny Munsch, Mathilde Deloire, et al.. Microstructural analyses of the posterior cerebellar lobules in relapsing-onset multiple sclerosis and their implication in cognitive impairment. PLoS ONE, 2017, 12 (8), 10.1371/journal.pone.0182479 . hal-01576497

HAL Id: hal-01576497

<https://hal.science/hal-01576497>

Submitted on 23 Aug 2017

HAL is a multi-disciplinary open access archive for the deposit and dissemination of scientific research documents, whether they are published or not. The documents may come from teaching and research institutions in France or abroad, or from public or private research centers.

L'archive ouverte pluridisciplinaire **HAL**, est destinée au dépôt et à la diffusion de documents scientifiques de niveau recherche, publiés ou non, émanant des établissements d'enseignement et de recherche français ou étrangers, des laboratoires publics ou privés.

RESEARCH ARTICLE

Microstructural analyses of the posterior cerebellar lobules in relapsing-onset multiple sclerosis and their implication in cognitive impairment

Amandine Moroso^{1,2,3}, Aurélie Ruet^{1,2,3}, Delphine Lamargue-Hamel^{1,3}, Fanny Munsch^{1,3}, Mathilde Deloire², Pierrick Coupé^{1,4}, Julie Charré-Morin², Aurore Saubusse², Jean-Christophe Ouallet², Vincent Planche^{1,3}, Thomas Tourdias^{1,2,3}, Vincent Dousset^{1,2,3}, Bruno Brochet^{1,2,3*}

1 Univ. Bordeaux, Bordeaux, France, **2** CHU de Bordeaux, INSERM-CHU CIC-P 0005, & Services de Neurologie et Neuroradiologie, Bordeaux, France, **3** Neurocentre Magendie, INSERM U1215, Bordeaux, France, **4** LaBRI, UMR 5800, PICTURA, Talence, France

* bruno.brochet@chu-bordeaux.fr



OPEN ACCESS

Citation: Moroso A, Ruet A, Lamargue-Hamel D, Munsch F, Deloire M, Coupé P, et al. (2017) Microstructural analyses of the posterior cerebellar lobules in relapsing-onset multiple sclerosis and their implication in cognitive impairment. PLoS ONE 12(8): e0182479. <https://doi.org/10.1371/journal.pone.0182479>

Editor: Friedemann Paul, Charité Universitätsmedizin Berlin, GERMANY

Received: September 9, 2016

Accepted: July 19, 2017

Published: August 8, 2017

Copyright: © 2017 Moroso et al. This is an open access article distributed under the terms of the [Creative Commons Attribution License](https://creativecommons.org/licenses/by/4.0/), which permits unrestricted use, distribution, and reproduction in any medium, provided the original author and source are credited.

Data Availability Statement: All relevant data are within the paper.

Funding: REACTIV and SCICOG programs are supported by public grants from the French Agence Nationale de la Recherche within the context of the Investments for the Future program referenced ANR-10-LABX-57 named TRAIL (project IBIO-NI). REACTIV was also supported by a grant from MERCK SANTE FRANCE, and SCICOG by a grant from TEVA FRANCE. A. Moroso received

Abstract

Background

The posterior cerebellar lobules seem to be the anatomical substrate of cognitive cerebellar processes, but their microstructural alterations in multiple sclerosis (MS) remain unclear.

Objectives

To correlate diffusion metrics in lobules VI to VIIIb in persons with clinically isolated syndrome (PwCIS) and in cognitively impaired persons with MS (CIPwMS) with their cognitive performances.

Methods

Sixty-nine patients (37 PwCIS, 32 CIPwMS) and 36 matched healthy subjects (HS) underwent 3T magnetic resonance imaging, including 3D T1-weighted and diffusion tensor imaging (DTI). Fractional anisotropy (FA) and mean diffusivity (MD) were calculated within each lobule and in the cerebellar peduncles. We investigated the correlations between cognitive outcomes and the diffusion parameters of cerebellar sub-structures and performed multiple linear regression analysis to predict cognitive disability.

Results

FA was generally lower and MD was higher in the cerebellum and specifically in the vermis Crus II, lobules VIIb and VIIIb in CIPwMS compared with PwCIS and HS. In hierarchical regression analyses, 31% of the working memory z score variance was explained by FA in the left lobule VI and in the left superior peduncle. Working memory was also associated

a research grant from the Fondation pour la Recherche Médicale (DEA20140630564). The funders has no role in the study design, data collection and analysis, decision to publish, or preparation of the manuscript.

Competing interests: Pr Brochet, Dr Ruet and Dr Ouallat or their institution received research grants and/or consulting fees from Actelion, Biogen, Bayer-Healthcare, Novartis, Genzyme, Roche, Medday, Merck and Teva. A. Moroso, D. Hamel, F. Munsch, M. Deloire, P. Coupé, T. Tourdias, and V. Dousset have nothing to disclose. V. Planche received travel expenses from ARSEP Fondation, Biogen, Teva, Lundbeck and Merk-Serono.

with MD in the vermis Crus II. FA in the left lobule VI and right VIIa predicted part of the information processing speed (IPS) z scores.

Conclusion

DTI indicators of cerebellar microstructural damage were associated with cognitive deficits in MS. Our results suggested that cerebellar lobular alterations have an impact on attention, working memory and IPS.

Introduction

Diffusion tensor imaging (DTI) is a sensitive method for studying microstructural changes in the brain [1]. It has been used in recent years in several studies to obtain a better understanding of the cognitive impairment associated with multiple sclerosis (CIAMS) [2]. CIAMS is common and can affect persons with multiple sclerosis (PwMS) at all stages of the disease, including the early stages, such as clinically isolated syndrome (CIS) [3]. CIAMS implies several cognitive domains including episodic memory, attention, working memory and executive functions [3]. However, the slowness of the information processing speed (IPS) is the main cognitive dysfunction observed in MS even at the earlier stages and is associated with poor prognosis, significant consequences on employment status and decreased quality of life [4]. The pathogenic mechanisms underlying CIAMS are still not fully understood [2,3]. Magnetic resonance imaging (MRI) studies suggested that diffuse damage of the cerebral white matter affecting important cognitive networks [5,6] could play a role in the early stages, but a role for the involvement of grey matter (GM), including the thalami, has also been demonstrated [7]. It is now established that the cerebellum plays an important role in cognition in general [8]. Schmahmann *et al.* suggested that the cerebellum regulate speed, consistency and accuracy of cognitive processes. The cerebellum is supposed to integrate and permit cognitive facilitation and optimisation in order to obtain automation. Then, cerebellar damage could result in a « dysmetria of thought » defined by analogy with motor dysmetria [8,9]. In MS, cerebellar dysfunction is associated with cognitive deficits [10,11], particularly IPS [12]. MS is associated with cerebellar damage, and extensive demyelination has been observed in the cerebellar cortex [13]. An association between CIAMS and cerebellar GM atrophy [14,15] and lesion volume [11,16] has been reported. Several DTI studies of the brain reported abnormal DTI metrics such as fractional anisotropy (FA) and mean diffusivity (MD) associated with CIAMS in the cerebellar peduncles or the cerebellar parenchyma. This association suggests an anatomical disconnection between the cerebral associative areas and the cerebellum [17–22]. Functional magnetic resonance imaging (fMRI) confirmed the existence of a functional cortico-cerebellar disconnection associated with CIAMS [23] and provided evidence of the cognitive specificity of posterior cerebellar lobules in healthy subjects (HS) [24,25]. Posterior lobules integration within the cortico-cerebellar loop has been shown anatomically. Cortico-pontine projections have been evidenced using viral transynaptic tracers in rhesus monkeys showing connexion between hemispheric parts of Crus II and vermian parts of lobules VII et IX on the one hand and area 46 and 9 of the dorsolateral prefrontal and area 5 and 7 of posterior parietal cortices on the other hand [26,27]. A specific cognitive cartography of the posterior cerebellar lobules has been described based on fMRI studies made in the last twenty years [25]. Indeed, in healthy subjects (HS), although all posterior lobules are engaged, some preferential contribution of specific lobules in cognitive domains have been observed, such as the left supero-posterior

cerebellum for attention [28], vermis VI and Crus I for verbal working memory and lobule VI, Crus I/II and VIIb for executive functions [24,25].

However, the association between specific alterations of the posterior lobule microstructure and specific cognitive outcomes has not been studied in CIS and MS. Our aim was to study the diffusion metrics in lobules VI to VIIIb in persons with CIS (PwCIS) according to the cognitive status, in PwMS with cognitive impairment (CIPwMS) and in HS as negative controls.

Methods

Subjects

Sixty-nine patients (PwCIS and CIPwMS) and 69 HS matched for age, sex and educational level were recruited from June 2010 to December 2014 at the Bordeaux University Hospital Center, France. Out of 69 HS, 36 underwent an MRI scan and all 69 were evaluated with cognitive testing.

All PwCIS ($n = 37$) were included within 6 months after their first neurological episode and presented at least two asymptomatic cerebral lesions larger than 3 mm on fast fluid-attenuated inversion-recovery (FLAIR) images. For CIPwMS ($n = 32$) the inclusion criteria were as follows: MS diagnosis according to McDonald's criteria [29], disease duration >6 months and ≤ 15 years and mild cognitive impairment defined as two scores beyond one standard deviation (SD) among a large neuropsychological battery. MS patients were treated according to current standards of clinical care.

Exclusion criteria were as follows: age under 18 or over 55 years, history of other neurological or psychiatric disorders, inability to perform computerised tasks or MRI, MS attack in the two months preceding the screening, corticosteroid pulse therapy within two months preceding the screening, severe cognitive deficits (Mini-Mental State Examination <27), and depression (Beck Depression Inventory score (BDI) >27).

Expanded Disability Status Scale (EDSS) score was determined by expert neurologists.

Standard protocol, approvals, registration, and patient consents

Each subject provided written informed consent. Patients were included from two different studies (REACTIV, ClinicalTrials.gov Identifier: NCT01207856, study concerning cognitively impaired PwCIAMS, and SCI-COG, ClinicalTrials.gov Identifier: NCT01865357, analysing cognitive impairment in patients after a CIS). Both studies were approved by the local ethics committee which is called Comité de Protection des Personnes, Bordeaux.

Neuropsychological assessment

Neuropsychological evaluation assessed attention, working memory, executive functions and IPS. Because PwCIS and PwCIAMS were included in two different studies, some tests for working memory and verbal fluency differed between the two samples and z scores for cognitive domains were calculated by comparisons with scores obtained in the control group. Attention IPS and executive function tests, other than verbal fluency, were identical for all patients and HS and have been described previously [30]. All patients and their matched HS included in a given study (respectively SCI-COG and REACTIV) were assessed by the same tests.

Each domain was evaluated with the following tests (CIS and matched HS: *; MS and matched HS: **):

1. **Attention:** Test of Attentional Performance (TAP)^{*/**} consists of subtests for visual scanning (accurate answers) and visual and auditory divided attention. For divided attention, the number of accurate answers and reaction time ratios of the double task (auditory and

visual divided attention) to the simple task (auditory or visual divided attention) were considered.

2. **Working Memory:** Numerical span test (forward^{*/**} and backward^{*/**}) and Paced-Auditory Serial Addition Test–3 seconds (PASAT)^{*} or working memory subtest of the TAP^{**}.
3. **Executive functions:** Stroop test^{*/**} (using the difference between the denomination part and the inhibition task scores) and Word List Generation test (verbal fluency assessment)^{*} or semantic verbal fluency (using animal category)^{**}.
4. **IPS:** Symbol Digit Modalities Test (SDMT)^{*/**}

Depression and anxiety symptoms were measured using Beck's Depression Inventory (BDI) and State-Trait Anxiety Inventory for adults, subtest State (STAI-S), respectively in all participants.

MRI acquisition

MRI scans were performed on a 3T Achieva TX system (Philips Healthcare, Best, The Netherlands) with an 8-channel coil. The morphological protocol consisted of 3D T1 weighted MR images acquired using the magnetization prepared rapid gradient echo (MPRAGE) imaging (TR = 8.20 ms, TE = 3.5 ms, TI = 982 ms, $\alpha = 7^\circ$, FOV = 256 mm, voxel size = 1 mm³, 180 slices) and Fast Fluid-Attenuated Inversion-Recovery (FLAIR) images (TR = 11000 ms, TE = 140 ms, TI = 2800 ms, FOV = 230 mm, matrix = 325X352, 45 axial slices, 3-mm thick). The single-shot diffusion weighted EPI DTI sequence included 20 directions (TE = 60 ms, TR = 11676 ms, matrix = 144X144, 75 slices, 1.6-mm thickness, b = 1000 s/mm²).

Image processing and analysis

MRI processing. T1-weighted MRI images were processed using the pipeline of the vol-Brain system (<http://volbrain.upv.es>). This preprocessing pipeline consisted of a denoising step [31] and an affine registration [32] into the Montreal Neurological Institute (MNI) space.

DTI processing. Diffusion MRI images were processed using an in-house pipeline (dti-Brain). First, diffusion-weighted images were denoised [33] to improve the signal-to-noise ratio. Head displacement and distortions induced by eddy currents were then corrected by performing affine registration followed by non-linear registration of all diffusion-weighted images to the b0 image. The direction table was updated with the estimated registration matrices. A non-rigid registration of diffusion-weighted images to the subject's T1-weighted images in the MNI space was used to compensate for EPI distortions. Finally, a diffusion tensor model was fit at each voxel using FSL 5.0.3 (<http://fsl.fmrib.ox.ac.uk/fsl>) to estimate the fractional anisotropy (FA) and mean diffusivity (MD) maps.

Regions of interest.

- **Lobule segmentation:** The spatially unbiased atlas template of the cerebellum and brainstem (SUIT) toolbox 3.0 (SPM 8) was used for cerebellar lobule segmentation [34–36]. The software enables the standardization of lobule size to drive a reliable segmentation by capturing inter-individual variability. First, cerebellums were isolated from brains on 3D T1w in the MNI space, and a non-linear registration of the cropped T1w images over the SUIT template using Dartel was performed [37]. FA and MD maps in the MNI space were transformed into the SUIT space using the deformation field estimated on the T1w images. Moreover, dedicated regions of interest (ROI) were defined in each cerebellar lobule from VI to VIIIB to avoid susceptibility artefacts at the border of the posteriorly located lobules that could artificially modify diffusivity parameters. To define these ROIs, spheres with a radius of 8 mm,

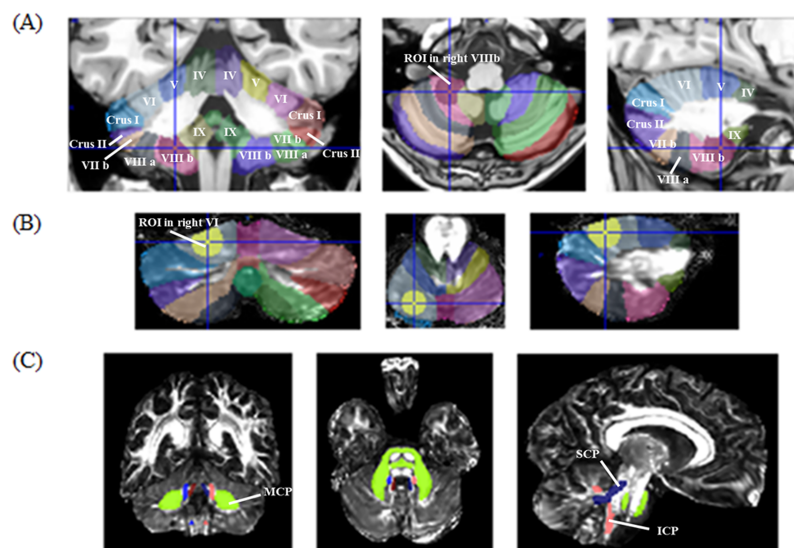


Fig 1. A: Detailed image processing used to obtain lobular and peduncular diffusivity data. Cropping and non-linear registration of T1w images over the SUIT template and ROI delineation. B: Registration of the diffusivity map using the transformation estimated with the T1w, diffusivity estimation into ROI. C: Non-linear registration of diffusivity maps and estimation within ROI determined by the JHU-ICBM-DTI-81 WM atlas (FSL).

<https://doi.org/10.1371/journal.pone.0182479.g001>

adapted to the lobular anatomy, were manually drawn on SUIT cerebellum atlas labels using MRIcron, version 4.8.2014. ROIs were positioned inside the inner part of the posterior lobules in order to minimize CSF partial volume and outer layer artefacts and were replicated for each patient's lobules to obtain a reproducible and representative sample of FA and MD values per lobule (Fig 1B).

- **Peduncle segmentation:** Finally, because the SUIT toolbox did not include cerebellar peduncle masks, a dedicated pipeline was developed to segment these structures. To do that, we registered FA and MD maps in the MNI space by using affine and non-linear registration (FNIRT, FSL 5.0) with the JHU-ICBM-FA-1mm template as a reference. Then, we used the JHU ICM DTI 81 WM atlas to create binarized masks for each cerebellar peduncle (superior cerebellar peduncle, SCP; medium cerebellar peduncle, MCP; inferior cerebellar peduncle, ICP). Finally, the binarized masks were warped on the FA and MD maps to calculate mean values for each cerebellar peduncle. Therefore, diffusion metrics of superior (SCP), medium (MCP) and inferior cerebellar peduncles (ICP) were independently estimated within ROI determined by the JHU-ICBM-DTI-81 WM atlas (Fig 1C).

The average values of the diffusivity parameters were then calculated in each ROI in cerebellar lobules and peduncles.

Statistical analyses

All data were analysed with the R package 'stats' (version 3.1.3). The normal distribution was tested for all variables with the Shapiro-Wilk test.

Sex and educational level were compared using Chi-square tests. Quantitative clinical and imaging data were compared between PwCIS, PwCIAMS and HS with ANOVA or Kruskal-Wallis tests depending on their distributions. For post hoc analyses, Tukey's or Nemenyi tests

were used to compare two subgroups when ANOVA or Kruskal-Wallis tests showed significant results.

Z scores were calculated according to the formula: $(\text{patient's raw score} - \text{HS mean score} / \text{HS standard deviation (SD)})$ from a population of 69 HS. When a cognitive domain was composed of multiple tests, the mean z score of each test was considered. Cognitive impairment was defined with z scores below -1.5 in a domain. Z score comparisons between PwCIAMS and PwCIS were obtained with the t-test (or Mann-Whitney U tests). A significance threshold of 0.05 was applied.

According to the variable distribution, Spearman or Pearson's correlations between imaging and cognitive outcome in all patients (CIS and MS) were used. Bonferroni correction for multiple comparisons was applied ($p < 0.002$).

Linear regression analyses were used to predict cognitive outcome, including three hierarchical blocks: 1) clinical data, 2) lobular data, and 3) peduncle data. Each cognitive domain was studied in an independent model. Two prediction models were defined (FA and MD models). The dependent variable and residual normal distributions were checked using the Shapiro test and histograms. Independent variables were entered in the models only if the p value was below 0.10 in univariate analyses.

Results

Demographic, clinical data and cognitive assessment

We included 37 PwCIS, 32 CIPwMS and 69 HS. There were no differences for sex, median age and educational level between groups, either when considering the whole HS group or only the HS subgroup that underwent MRI. Table 1 describes the population demographics and clinical characteristics. The mean attention, working memory and IPS z scores were significantly decreased in CIPwMS versus PwCIS. No differences were detected for executive

Table 1. Characteristics of the population.

	HS (n = 69)	CIS (n = 37)		MS (n = 32)	
Median age (range) ^a	36 (21–60)	36 (19–59) ^{ns}		42 (29–50) ^{ns}	
Sex: % of women ^b	50 (72.46%)	29 (78.38%) ^{ns}		23 (71.88%) ^{ns}	
Median EDSS (range) ^b	.	1.00 (0–6)		3.00 (0–8)***	
Mean disease duration (SD) in months ^c	.	4.25 (± 1.98)		106.11 (± 61.44)***	
Median MSSS (range) ^c	.	2.44 (0.67–9.74)		3.55 (0.21–9.09)***	
Educational level ^b	54 (78.26%)	25 (67.57%) ^{ns}		21 (65.62%) ^{ns}	
Mean attention z score (SD)/ % impaired ^c	.	-0.13 (± 0.44)	0	-0.33 (± 0.70)*	6.25
Mean working memory z score (SD)/ % impaired ^c	.	-0.32 (± 0.73)	5.41	-0.97 (± 0.78)**	25
Mean EF z score (SD)/ % impaired ^c	.	-0.54 (± 0.69)	8.11	-0.75 (± 0.83) ^{ns}	15.3
Mean IPS z score (SD)/ % impaired ^c	.	-0.57 (± 1.06)	13.51	-2.11 (± 1.02)***	71.77

^a: Results for ANOVA between HS, CIS and MS;

^b: Results for Fisher's exact test;

^c: Results for t tests between CIS and MS patients.

Differences between groups:

^{ns}: not significant; $p > 0.05$;

*: $p \leq 0.05$;

** : $p \leq 0.01$;

***: $p \leq 0.001$

EF: Executive functions, IPS: Information Processing Speed

<https://doi.org/10.1371/journal.pone.0182479.t001>

functions. Table 1 shows the z scores for the different cognitive domains for the two groups. IPS slowness occurred in 13.51% of PwCIS and in 71.77% of CIPwMS. Depression scores were higher in CIS (BDI median score = 9 [0–26]; $p < 0.001$) and MS (14 [0–26]; $p < 0.001$) compared to HS (4 [0–23]). Anxiety scores were increased in PwCIS (STAI-S median score = 34 [20–64]; $p < 0.001$) but not CIPwMS compared to HS. No correlation was found between cognitive assessment and anxiety or depression scales.

DTI metrics analyses

Significant differences in the DTI metrics between groups are described in Tables 2 and 3.

No significant differences were found regarding diffusivity metrics between PwCIS and HS.

FA was reduced in a majority of cerebellar substructures in MS compared to CIS and to HS, especially on the right side (Table 2). CIS patients tended to display slightly higher FA values, compared to HS, but this usually did not reach statistical significance. MD was increased in the vermis Crus II, Left VIIb, lobules VIIIb and cerebellar peduncles in CIPwMS compared to HS and to PwCIS.

Correlations between cognitive outcome and imaging data

Correlations between diffusion metrics and cognitive outcomes are listed in Tables 4 and 5.

For the entire patient group, working memory was positively correlated with the FA in the

Table 2. Comparisons of FA between CIS, MS and HC.

	HS (n = 36)	CIS (n = 37)	MS (n = 32)
	Mean \pm SD	Mean \pm SD	Mean \pm SD
	Median (range) \square	Median (range) \square	Median (range) \square
Left VI	0.23 \pm 0.03	0.23 ^{c**} \pm 0.03	0.20 ^{b**} \pm 0.03
Vermis VI	0.12 \pm 0.02	0.14 ^{a**} ^{c***} \pm 0.02	0.12 \pm 0.02
Right VI	0.19 \pm 0.03	0.19 ^{c*} \pm 0.03	0.17 \pm 0.04
Left Crus I	0.23 \pm 0.04	0.23 ^{c*} \pm 0.04	0.21 ^{b*} \pm 0.03
Right Crus I	0.19 \pm 0.03	0.19 ^{c**} \pm 0.03	0.16 ^{b*} \pm 0.03
Vermis VIIb \square	0.16 (0.11–0.31)	0.17 ^{c**} (0.11–0.26)	0.15 (0.11–0.23)
Right VIIb	0.18 \pm 0.03	0.20 ^{c*} \pm 0.02	0.17 \pm 0.03
Vermis VIIla	0.17 \pm 0.03	0.19 ^{c*} \pm 0.04	0.17 \pm 0.02
Right VIIla	0.18 \pm 0.03	0.20 ^{a*} \pm 0.04	0.18 \pm 0.03
Right VIIlb	0.16 \pm 0.03	0.18 ^{c*} \pm 0.04	0.16 \pm 0.04
SCPL	0.55 \pm 0.03	0.55 ^{c***} \pm 0.03	0.52 ^{b**} \pm 0.03
SCPR \square	0.55 (0.46–0.59)	0.53 ^{c**} (0.49–0.63)	0.52 ^{b**} (0.42–0.56)
MCP	0.48 \pm 0.02	0.48 ^{c***} \pm 0.02	0.46 ^{b***} \pm 0.03
ICPL	0.47 \pm 0.03	0.48 ^{c***} \pm 0.03	0.45 ^{b*} \pm 0.04
ICPR	0.47 \pm 0.03	0.46 ^{c*} \pm 0.03	0.44 ^{b**} \pm 0.03)

^a. Comparison between CIS and HC;

^b. Comparison between MS and HC;

^c. Comparison between CIS and MS

Differences between groups:

*: $p \leq 0.05$;

** : $p \leq 0.01$;

***: $p \leq 0.001$

\square Kruskal-Wallis test used because of non-linear distribution

SCPL: Superior cerebellar peduncle, left and right (SCPR); MCP: Medium cerebellar peduncle; ICPL: Inferior cerebellar peduncle, left and right (SCPR)

<https://doi.org/10.1371/journal.pone.0182479.t002>

Table 3. Comparisons in MD between CIS, MS and HC.

	HS (n = 36)	CIS (n = 37)	MS (n = 32)
	Mean \pm SD	Mean \pm SD	Mean \pm SD
	Median (range) \square	Median (range) \square	Median (range) \square
Vermis Crus II	1.21E-03 \pm 8.91E-05	1.18E-03 ^{b***} \pm 1.21E-04	1.30E-03 ^{a**} \pm 1.65E-04
Left VIIb \square	1.08E-03 (8.93E-04–1.61E-03)	1.07E-03 ^{b*} (8.82E-04–1.36E-03)	1.13E-03 ^{a*} (7.61E-04–1.50E-03)
Left VIIIb	1.22E-03 \pm 1.83E-04	1.27E-03 \pm 1.92E-04	1.40E-03 ^{a*} \pm 2.70E-04
Vermis VIIIb	1.13E-03 \pm 1.29E-4	1.11E-03 ^{b*} \pm 1.24E-04	1.20E-03 \pm 1.56E-04
Right VIIIb \square	1.06E-03 (6.42E-04–1.24E-03)	1.07E-03 (8.37E-04–1.31E-03)	1.13E-03 ^{a*} (8.80E-04–1.38E-03)
SCPL	1.42E-03 \pm 9.01E-05	1.40E-03 ^{b***} \pm 9.05E-05	1.54E-03 ^{a***} \pm 1.67E-04
SCPR	1.42E-03 \pm 1.04E-04	1.40E-03 ^{b***} \pm 9.49E-05	1.53E-03 ^{a**} \pm 1.91E-04
MCP	1.06E-03 \pm 3.96E-05	1.06E-03 ^{b***} \pm 3.46E-05	1.11E-03 ^{a***} \pm 6.27E-05
ICPL \square	1.03E-03 (9.38E-04–1.13E-03)	1.03E-03 ^{b*} (9.57E-04–1.13E-03)	1.08E-03 ^{a***} (1.01E-03–1.27E-03)
ICPR	1.02E-03 \pm 3.02E-05	1.03E-03 ^{b**} \pm 3.09E-05	1.07E-03 ^{a***} \pm 4.82E-05

^a Comparison between MS and HC;

^b Comparison between CIS and MS

Differences between groups:

*: $p \leq 0.05$;

**: $p \leq 0.01$;

***: $p \leq 0.001$

\square Kruskal-Wallis test used because of non-linear distribution

SCPL: superior cerebellar peduncle, left; SCPR: superior cerebellar peduncle, right (SCPR); MCP: medium cerebellar peduncle; ICPL: inferior cerebellar peduncle, left; SCPR: inferior cerebellar peduncle, right

<https://doi.org/10.1371/journal.pone.0182479.t003>

Table 4. Correlations between FA and cognitive outcome.

	Patients (n = 69)
<u>Working memory</u>	
SCPL	0.54***
SCPR	0.47***
<u>IPS</u>	
Left VI	0.47***
Right VIIa	0.42**
Right VIIIb	0.43**
MCP	0.47***
ICPL	0.39*

Differences between groups:

*: $p \leq 0.05$;

**: $p \leq 0.01$;

***: $p \leq 0.001$

<https://doi.org/10.1371/journal.pone.0182479.t004>

Table 5. Correlations between MD and cognitive outcome.

	Patients (n = 69)
IPS	
Vermis Crus II	-0.45**
SCPL	-0.41**
MCP	-0.38*

SCPL: Superior cerebellar peduncle, left and right (SCPR); MCP: Medium cerebellar peduncle; ICPL: Inferior cerebellar peduncle, left and right (SCPR); Differences between groups:

*: $p \leq 0.05$;

** : $p \leq 0.01$

<https://doi.org/10.1371/journal.pone.0182479.t005>

superior cerebellar peduncles, whereas the IPS was positively correlated with FA in the Left VI, Right VIIa and right VIIb, and with MD in the vermis Crus II.

The results from multiple hierarchical regression analyses are presented in Tables 6 and 7. FA in the left lobule VI and in the left superior peduncle explained 31% of the variance in the working memory z score. Working memory was also associated with MD in the vermis Crus II. FA in the left VI and right VIIa also predicted some of the IPS z scores. The microstructure of cerebellar peduncles had an impact on cognitive outcome in almost all tested domains.

Discussion

Our study highlights that microstructural alterations in the posterior cerebellar substructures are associated with impairment in different cognitive domains in MS.

Microstructural alterations at different stages of MS

We observed that microstructural damages are detected by DTI in posterior lobules and cerebellar peduncles in the MS subgroup but not in CIS. A post-mortem study found an association in MS between DTI metrics (FA and MD) and myelin content and axonal count or gliosis to a lesser proportion, suggesting that DTI is a reliable method for analysing microstructural

Table 6. Multivariate analysis model 1 –Cognitive prediction and FA analysis.

	Estimate (B)	Standard Error	P value	Adjusted R2
Attention				None
Working Memory				
Intercept	-8.43	1.47	3.39E-7	0.31
Left VI	5.63	2.75	0.05	
SCPL	12.27	2.79	4.45E-5	
Executive functions				
Intercept	-4.45	1.37	0.002	0.10
SCPR	7.13	2.57	0.007	
IPS				
Intercept	-10.75	2.22	9.93E-6	0.31
Left VI	11.54	4.83	0.02	
Right VIIa	11.15	4.45	0.02	
SCPR	9.03	4.07	0.03	

<https://doi.org/10.1371/journal.pone.0182479.t006>

Table 7. Multivariate analysis model 2—Cognitive prediction and MD analysis.

	Estimate (B)	Standard Error	P value	Adjusted R2
Attention				
Intercept	1.45	0.58	0.02	0.11
Right Crus I	-1635.62	570.94	0.006	
Working Memory				
Intercept	3.75	1.03	0.0006	0.21
Vermis CrusII	-1660.84	804.76	0.04	
SCPR	6237.24	2532.75	0.02	
SCPL	-7812.16	2562.06	0.003	
Executive functions				
Intercept	5.61	1.63	0.001	0.18
ICPL	-5927.83	1540.53	0.0003	
IPS				
Intercept	1.16E1	2.92	0.0002	0.27
Age	-4.75E-2	1.52E-2	0.003	
MCP	-1.02E4	2.63E3	0.0003	

<https://doi.org/10.1371/journal.pone.0182479.t007>

damage in this disease [38]. However, depending on the DTI-metrics profiles observed, several types of alterations should be discussed.

Concordant with studies in supratentorial brain [17–19,39,40], FA was reduced in most of the cerebellar substructures in CIPwMS compared with PwCIS and HS. Change in MD could be observed in concordance or not with this FA reduction. MD increased in cerebellar peduncles, concordant with FA reduction. This concordant profile is the most frequent when analysing structured bundles of white matter and is associated with fiber loss and alteration of structural barriers limiting water molecular motion. [41]. By contrast, FA decrease was associated with MD preservation in the left VI, left and right Crus I and FA preservation with MD decrease in the vermis Crus II, left VIIb and left and right VIIIb. This discordance has previously been shown in other diseases (post-lacunar Wallerian degeneration and thalamic microstructural changes in Parkinson disease) but is not fully understood [42,43]. FA decrease associated with unmodified MD level is considered to be the consequence of a secondary Wallerian degeneration with axonal loss and changes in neurons integrity accompanied by gliosis or extracellular matrix modifications [42,43]. This process may occur preferentially in regions where fibre tracts are crossing and cellularity is higher than it is in WM. Moreover, an isolated MD upholding could occur when fibre loss is associated with an insufficient cellular reaction to alter directional anisotropy metrics. It has also been observed that glial proliferation could decrease both MD and FA, highlighting a preponderance of tissue damage over tissue repair [41].

In our cohort, FA in CIS tended to rise in comparison to HS. DTI studies in CIS yielded contradictory results, showing either an increase or a decrease of FA in WM and GM according to previous studies [44–46]. This phenomenon has already been described within structures including GM in MS and could be related to the stripping of selective dendrites or iron accumulation [47–50]. More recently, in post-mortem samples undergoing DTI imaging and histological study, this phenomenon has been associated with tissue compaction related to neurodegeneration rather than microglial activation [51].

Involvement in cognitive impairment

Several DTI studies have focused on the peduncle abnormalities which are now rather well defined in contrary to lobular ones. An association between cognitive impairment (especially

IPS assessed by the SDMT and verbal learning) and abnormal superior cerebellar peduncles diffusion parameters has been reported [52]. Reduced FA was also found in cerebellar parenchyma in cognitively impaired patients [19]. Our results showed that cognitive z scores were partly predicted by microstructural alteration in cerebellar peduncles contributing to the disconnection between the supra-tentorial associative areas and the cerebellum. This confirmed the important role of the peduncles in cognitive processes and above all IPS and working memory. Although some researchers studied the correlation between microstructural damages and CIAMS, none have analysed the particular involvement of the cerebellum sub-structures. Interestingly and contrary to some fMRI studies in HS [24,25], we found no evidence of a strict cognitive map arrangement that would link a specific lobule to a cognitive domain. Indeed, multivariate analysis demonstrated that the domain z score could be predicted by different substructure alterations depending on the diffusion parameter that is considered. For example, the attention z score was only correlated with MD in the right Crus I, working memory with FA in the left lobule VI and MD in the vermal Crus II and IPS was strongly correlated with FA in the left lobule VI and right VIIIa.

These results echo the study that we recently reported about GM volumetric analysis in the same group of patients [53]. In that previous work, we showed a correlation between GM volume within posterior lobules and especially vermis VI and IPS. These results showed that both macro and microstructural damages, especially in lobules VI, are associated with cognitive impairment in MS. However, the wider range of structures for which microstructural abnormalities were associated with cognitive deficits suggest that DTI could detect early processes before the development of atrophy.

Our results corroborate fMRI studies showing that working memory should be supported by the lobules VI and VII, for example [25,54]. However, an overlap between working memory and IPS is demonstrated for left lobule VI, indicating a non-formal cognitive map in the posterior cerebellum. The lack of strict mapping is in agreement with Schmahmann's assumption that the posterior cerebellum "regulates the speed, capacity, consistency, and appropriateness of mental or cognitive processes" [8,9,55]. Indeed, the main role of this anatomical structure is to generate an automatized response from high level cognitive load processed in the cortical associative areas. It has been shown that MS patients are unable to activate the usual cerebello-frontal network associated with fastest responses to a given task, consequently activating a substitute compensatory network, involving the prefrontal cortex [23]. IPS represents best this preferential phenomenon of global optimisation and automation which has been previously highlighted by clinical and fMRI studies in MS. [12,23].

Study limitations

Our study is not without limitations. First, infratentorial lesions have not been considered, although both grey and white matter lesions in the cerebellum could have an impact on cortico-cerebellar disconnection [56]. However, lesions impact DTI metrics, and their effect is therefore included within the variables. Second, in our analysis, ROIs included both grey and white matter. Therefore, the average diffusivity parameters reflected a nonlinear heterogeneous cerebellar anatomy with a risk of statistical bias. Indeed, cerebellar diffusion-weighted imaging is even more challenging than anatomical imaging because of the technical difficulties and anatomical heterogeneity (principally grey and white matter tangles). Volume atrophy leading to DTI parameters modification is another concern. Indeed, cerebellar atrophy was not taken into account in our analysis. Moreover, PwCIS and PwMS were included from two different studies and some tests used for neuropsychological assessment were different. However, the majority of cognitive domains were assessed in the same way between PwCIS and

PwMS and divergent tests were roughly equivalent and were always associated to a common test in order to obtain relevant cognitive domains.

Conclusion

In conclusion, we report the predictive value of DTI metrics in posterior cerebellar lobules and peduncles in cognitive outcome at different stages of MS. IPS and working memory seemed to be more significantly impacted than executive functions and attention, corroborating the idea of cerebellar cognitive regulation and optimization through the cortico-cerebellar loop rather than a cognitive substrate *per se*.

Author Contributions

Conceptualization: Aurélie Ruet, Mathilde Deloire, Bruno Brochet.

Formal analysis: Amandine Moroso, Aurélie Ruet, Delphine Lamargue-Hamel, Fanny Munsch, Mathilde Deloire, Pierrick Coupé, Thomas Tourdias, Bruno Brochet.

Funding acquisition: Mathilde Deloire, Vincent Dousset, Bruno Brochet.

Investigation: Amandine Moroso, Aurélie Ruet, Delphine Lamargue-Hamel, Fanny Munsch, Pierrick Coupé, Julie Charré-Morin, Aurore Saubusse, Jean-Christophe Ouallet, Vincent Planche.

Methodology: Amandine Moroso, Delphine Lamargue-Hamel, Mathilde Deloire, Julie Charré-Morin, Aurore Saubusse, Vincent Planche, Bruno Brochet.

Project administration: Mathilde Deloire, Bruno Brochet.

Supervision: Aurélie Ruet, Thomas Tourdias, Vincent Dousset, Bruno Brochet.

Validation: Amandine Moroso, Bruno Brochet.

Writing – original draft: Amandine Moroso, Aurélie Ruet, Bruno Brochet.

Writing – review & editing: Amandine Moroso, Aurélie Ruet, Mathilde Deloire, Thomas Tourdias, Bruno Brochet.

References

1. Mori S, Zhang J. Principles of diffusion tensor imaging and its applications to basic neuroscience research. *Neuron*. 2006; 51: 527–39. <https://doi.org/10.1016/j.neuron.2006.08.012> PMID: 16950152
2. Rocca MA, Amato MP, De Stefano N, Enzinger C, Geurts JJ, Penner I-K, et al. Clinical and imaging assessment of cognitive dysfunction in multiple sclerosis. *Lancet Neurol*. 2015; 14: 302–17. [https://doi.org/10.1016/S1474-4422\(14\)70250-9](https://doi.org/10.1016/S1474-4422(14)70250-9) PMID: 25662900
3. Chiaravalloti ND, DeLuca J. Cognitive impairment in multiple sclerosis. *Lancet Neurol*. 2008; 7: 1139–51. [https://doi.org/10.1016/S1474-4422\(08\)70259-X](https://doi.org/10.1016/S1474-4422(08)70259-X) PMID: 19007738
4. Ruet A, Deloire M, Charré-Morin J, Hamel D, Brochet B. Cognitive impairment differs between primary progressive and relapsing-remitting MS. *Neurology*. 2013; 80: 1501–8. <https://doi.org/10.1212/WNL.0b013e31828cf82f> PMID: 23516324
5. Deloire MSA, Salort E, Bonnet M, Arimone Y, Boudineau M, Amieva H, et al. Cognitive impairment as marker of diffuse brain abnormalities in early relapsing remitting multiple sclerosis. *J Neurol Neurosurg Psychiatry*. 2005 Apr; 76(4):519–26. <https://doi.org/10.1136/jnnp.2004.045872> PMID: 15774439
6. Audoin B, Guye M, Reuter F, Au Duong M-V, Confort-Gouny S, Malikova I, et al. Structure of WM bundles constituting the working memory system in early multiple sclerosis: a quantitative DTI tractography study. *NeuroImage*. 2007; 36: 1324–30. <https://doi.org/10.1016/j.neuroimage.2007.04.038> PMID: 17513134
7. Štecková T, Hlušík P, Sládková V, Odstrčil F, Mareš J, Kaňovský P. Thalamic atrophy and cognitive impairment in clinically isolated syndrome and multiple sclerosis. *J Neurol Sci*. 2014; 342: 62–8. <https://doi.org/10.1016/j.jns.2014.04.026> PMID: 24819917

8. Schmahmann JD. Dysmetria of thought: clinical consequences of cerebellar dysfunction on cognition and affect. *Trends Cogn Sci*. 1998; 2:362–71. PMID: [21227233](#)
9. Schmahmann JD, Caplan D. Cognition, emotion and the cerebellum. *Brain*. 2006; 129: 290–2. <https://doi.org/10.1093/brain/awh729> PMID: [16434422](#)
10. Valentino P, Cerasa A, Chiriac C, Nisticò R, Pirritano D, Gioia M, et al. Cognitive deficits in multiple sclerosis patients with cerebellar symptoms. *Mult Scler*. 2009; 15: 854–9.
11. Weier K, Penner IK, Magon S, Amann M, Naegelin Y, Andelova M, et al. Cerebellar abnormalities contribute to disability including cognitive impairment in multiple sclerosis. *PloS One*. 2014; 9: e86916. <https://doi.org/10.1371/journal.pone.0086916> PMID: [24466290](#)
12. Ruet A, Hamel D, Deloire MSA, Charré-Morin J, Saubusse A, Brochet B. Information processing speed impairment and cerebellar dysfunction in relapsing-remitting multiple sclerosis. *J Neurol Sci*. 2014; 347: 246–50. <https://doi.org/10.1016/j.jns.2014.10.008> PMID: [25454642](#)
13. Kutzelnigg A, Faber-Rod JC, Bauer J, Lucchinetti CF, Sorensen PS, Laursen H, et al. Widespread demyelination in the cerebellar cortex in multiple sclerosis. *Brain Pathol*. 2007; 17: 38–44. <https://doi.org/10.1111/j.1750-3639.2006.00041.x> PMID: [17493036](#)
14. Morgen K, Sammer G, Courtney SM, Wolters T, Melchior H, Blecker CR, et al. Evidence for a direct association between cortical atrophy and cognitive impairment in relapsing-remitting MS. *NeuroImage*. 2006; 30: 891–8. <https://doi.org/10.1016/j.neuroimage.2005.10.032> PMID: [16360321](#)
15. van de Pavert SHP, Muhlert N, Sethi V, Wheeler-Kingshott CAM, Ridgway GR, Geurts JGG, et al. DIR-visible grey matter lesions and atrophy in multiple sclerosis: partners in crime? *J Neurol Neurosurg Psychiatry*. 2016; 87: 461–7. <https://doi.org/10.1136/jnnp-2014-310142> PMID: [25926483](#)
16. Weier K, Till C, Fonov V, Yeh EA, Arnold DL, Banwell B, et al. Contribution of the cerebellum to cognitive performance in children and adolescents with multiple sclerosis. *Mult Scler*. 2016; 22: 599–607. <https://doi.org/10.1177/1352458515595132> PMID: [26203072](#)
17. Mesaros S, Rocca MA, Kacar K, Kostic J, Copetti M, Stosic-Opincal T, et al. Diffusion tensor MRI tractography and cognitive impairment in multiple sclerosis. *Neurology*. 2012; 78: 969–75. <https://doi.org/10.1212/WNL.0b013e31824d5859> PMID: [22377806](#)
18. Yu HJ, Christodoulou C, Bhise V, Greenblatt D, Patel Y, Serafin D, et al. Multiple white matter tract abnormalities underlie cognitive impairment in RRMS. *NeuroImage*. 2012; 59: 3713–22. <https://doi.org/10.1016/j.neuroimage.2011.10.053> PMID: [22062194](#)
19. Hulst HE, Steenwijk MD, Versteeg A, Pouwels PJW, Vrenken H, Uitdehaag BMJ, et al. Cognitive impairment in MS: impact of white matter integrity, gray matter volume, and lesions. *Neurology*. 2013; 80: 1025–32. <https://doi.org/10.1212/WNL.0b013e31828726cc> PMID: [23468546](#)
20. Sbardella E, Petsas N, Tona F, Prosperini L, Raz E, Pace G, et al. Assessing the correlation between grey and white matter damage with motor and cognitive impairment in multiple sclerosis patients. *PloS One*. 2013; 8: e63250. <https://doi.org/10.1371/journal.pone.0063250> PMID: [23696802](#)
21. Kolbe SC, Kilpatrick TJ, Mitchell PJ, White O, Egan GF, Fielding J. Inhibitory saccadic dysfunction is associated with cerebellar injury in multiple sclerosis. *Hum Brain Mapp*. 2014; 35: 2310–9. <https://doi.org/10.1002/hbm.22329> PMID: [24038970](#)
22. Bozzali M, Spanò B, Parker GJM, Giulietti G, Castelli M, Basile B, et al. Anatomical brain connectivity can assess cognitive dysfunction in multiple sclerosis. *Mult Scler*. 2013; 19: 1161–8. <https://doi.org/10.1177/1352458512474088> PMID: [23325589](#)
23. Bonnet MC, Allard M, Dilharreguy B, Deloire M, Petry KG, Brochet B. Cognitive compensation failure in multiple sclerosis. *Neurology*. 2010; 75: 1241–8. <https://doi.org/10.1212/WNL.0b013e3181f612e3> PMID: [20921510](#)
24. Keren-Happuch E, Chen S-HA, Ho M-HR, Desmond JE. A Meta-analysis of Cerebellar Contributions to Higher Cognition from PET and fMRI studies. *Hum Brain Mapp*. 2014; 35: 593–615. <https://doi.org/10.1002/hbm.22194> PMID: [23125108](#)
25. Stoodley CJ, Schmahmann J D. Evidence for topographic organization in the cerebellum of motor control versus cognitive and affective processing. *Cortex*. 2010; 46:831–844. <https://doi.org/10.1016/j.cortex.2009.11.008> PMID: [20152963](#)
26. Schmahmann JD, Pandya D N. Anatomic organization of the basilar pontine projections from prefrontal cortices in rhesus monkey. *J Neurosci*. 1997; 17: 438–458. PMID: [8987769](#)
27. Middleton FA, Strick PL. Cerebellar projections to the prefrontal cortex of the primate. *J Neurosci*. 2001; 21: 700–712. PMID: [11160449](#)
28. Allen G, Buxton R B, Wong EC, Courchesne E. Attentional Activation of the Cerebellum Independent of Motor Involvement. *Science*. 1997; 275: 1940–1943. PMID: [9072973](#)

29. Polman CH, Reingold SC, Edan G, Filippi M, Hartung H-P, Kappos L, et al. Diagnostic criteria for multiple sclerosis: 2005 revisions to the 'McDonald Criteria'. *Ann Neurol*. 2005; 58: 840–6. <https://doi.org/10.1002/ana.20703> PMID: 16283615
30. Lamargue-Hamel D, Deloire M, Saubusse A, Ruet A, Taillard J, Philip P, et al. Cognitive evaluation by tasks in a virtual reality environment in multiple sclerosis. *J Neurol Sci*. 2015; 359: 94–9. <https://doi.org/10.1016/j.jns.2015.10.039> PMID: 26671094
31. Manjón JV, Coupé P, Martí-Bonmatí L, Collins DL, Robles M. Adaptive non-local means denoising of MR images with spatially varying noise levels. *J Magn Reson Imaging JMRI*. 2010; 31: 192–203. <https://doi.org/10.1002/jmri.22003> PMID: 20027588
32. Avants BB, Tustison NJ, Song G, Cook PA, Klein A, Gee JC. A reproducible evaluation of ANTs similarity metric performance in brain image registration. *NeuroImage*. 2011; 54: 2033–44. <https://doi.org/10.1016/j.neuroimage.2010.09.025> PMID: 20851191
33. Manjón JV, Coupé P, Concha L, Buades A, Collins DL, Robles M. Diffusion weighted image denoising using overcomplete local PCA. *PLoS One*. 2013; 8: e73021 <https://doi.org/10.1371/journal.pone.0073021> PMID: 24019889
34. <http://www.diedrichsenlab.org/imaging/suit.htm>
35. Diedrichsen J. A spatially unbiased atlas template of the cerebellum and brainstem (SUIT). *NeuroImage*. 2006; 33: 127–38.
36. Diedrichsen J, Balsters JH, Flavell J, Cussans E, Ramnani N. A probabilistic MR atlas of the human cerebellum. *NeuroImage*. 2009; 46:39–46. <https://doi.org/10.1016/j.neuroimage.2009.01.045> PMID: 19457380
37. Ashburner J. A fast diffeomorphic image registration algorithm. *NeuroImage*. 2007; 38:95–113. <https://doi.org/10.1016/j.neuroimage.2007.07.007> PMID: 17761438
38. Schmierer K, Wheeler-Kingshott CAM, Boulby PA, Scaravilli F, Altmann DR, Barker GJ, et al. Diffusion tensor imaging of post mortem multiple sclerosis brain. *NeuroImage*. 2007; 35: 467–77. <https://doi.org/10.1016/j.neuroimage.2006.12.010> PMID: 17258908
39. Dineen RA, Vilisaar J, Hlinka J, Bradshaw CM, Morgan PS, Constantinescu CS, et al. Disconnection as a mechanism for cognitive dysfunction in multiple sclerosis. *Brain*. 2009; 132: 239–49. <https://doi.org/10.1093/brain/awn275> PMID: 18953055
40. Roca M, Torralva T, Meli F, Fiol M, Calcagno ML, Carpintero S, et al. Cognitive deficits in multiple sclerosis correlate with changes in fronto-subcortical tracts. *Mult Scler*. 2008; 14: 364–9. <https://doi.org/10.1177/1352458507084270> PMID: 18208880
41. Rovaris M, Gass A, Bammer R, Hickman SJ, Ciccarelli O, Miller DH, et al. Diffusion MRI in multiple sclerosis. *Neurology*. 2005; 65: 1526–32. <https://doi.org/10.1212/01.wnl.0000184471.83948.e0> PMID: 16301477
42. Pierpaoli C, Barnett A, Pajevic S, Chen R, Penix L, Virta A, et al. Water Diffusion Changes in Wallerian Degeneration and Their Dependence on White Matter Architecture. *NeuroImage*. 2001; 13: 1174–85. <https://doi.org/10.1006/nimg.2001.0765> PMID: 11352623
43. Li W, Liu J, Skidmore F, Liu Y, Tian J, Li K. White matter microstructure changes in the thalamus in Parkinson disease with depression: A diffusion tensor MR imaging study. *AJNR Am J Neuroradiol*. 2010; 31:1861–6. <https://doi.org/10.3174/ajnr.A2195> PMID: 20705702
44. Cappellani R, Bergsland N, Weinstock-Guttman B, Kennedy C, Carl E, Ramasamy DP, et al. Diffusion tensor MRI alterations of subcortical deep gray matter in clinically isolated syndrome. *J Neurol Sci*. 2014; 338: 128–34. <https://doi.org/10.1016/j.jns.2013.12.031> PMID: 24423584
45. Gallo A, Rovaris M, Riva R, et al. Diffusion-tensor magnetic resonance imaging detects normal-appearing white matter damage unrelated to short-term disease activity in patients at the earliest clinical stage of multiple sclerosis. *Arch Neurol*. 2005; 62: 803–8. <https://doi.org/10.1001/archneur.62.5.803> PMID: 15883269
46. Caramia F, Pantano P, Di Legge S, Piattella MC, Lenzi D, Paolillo A, et al. A longitudinal study of MR diffusion changes in normal appearing white matter of patients with early multiple sclerosis. *Magn Reson Imaging*. 2002; 20: 383–8. PMID: 12206862
47. Ciccarelli O, Werring DJ, Wheeler-Kingshott CA, Barker GJ, Parker GJ, Thompson AJ, et al. Investigation of MS normal-appearing brain using diffusion tensor MRI with clinical correlations. *Neurology*. 2001; 56: 926–33. PMID: 11294931
48. Tovar-Moll F, Evangelou IE, Chiu AW, Richert ND, Ostuni JL, Ohayon JM, et al. Thalamic Involvement and Its Impact on Clinical Disability in Patients with Multiple Sclerosis: A Diffusion Tensor Imaging Study at 3T. *Am J Neuroradiol*. 2009; 30: 1380–6. <https://doi.org/10.3174/ajnr.A1564> PMID: 19369608
49. Hannoun S, Durand-Dubief F, Confavreux C, Ibarrola D, Streichenberger N, Cotton F, et al. Diffusion tensor-MRI evidence for extra-axonal neuronal degeneration in caudate and thalamic nuclei of patients

- p>with multiple sclerosis.
- AJNR Am J Neuroradiol*
- . 2012; 33: 1363–8.
- <https://doi.org/10.3174/ajnr.A2983>
- PMID:
- [22383236](#)
50. Cavallari M, Ceccarelli A, Wang G-Y, Moscufo N, Hannoun S, Matulis CR, et al. Microstructural changes in the striatum and their impact on motor and neuropsychological performance in patients with multiple sclerosis. *PloS One*. 2014; 9: e101199. <https://doi.org/10.1371/journal.pone.0101199> PMID: [25047083](#)
51. Jonkman LE, Klaver R, Fleysher L, Inglese M, Geurts JJ. The substrate of increased cortical FA in MS: A 7T post-mortem MRI and histopathology study. *Mult Scler*. 2016 Mar 4. pii: 1352458516635290. [Epub ahead of print] <https://doi.org/10.1177/1352458516635290> PMID: [26945031](#).
52. Preziosa P, Rocca MA, Mesaros S, Pagani E, Drulovic J, Stosic-Opincal T, et al. Relationship between Damage to the Cerebellar Peduncles and Clinical Disability in Multiple Sclerosis. *Radiology*. 2014; 271:822–830. <https://doi.org/10.1148/radiol.13132142> PMID: [24555637](#)
53. Moroso A, Ruet A, Lamargue-Hamel D, Munsch F, Deloire M, Coupé P, et al. Posterior lobules of the cerebellum and information processing speed at various stages of multiple sclerosis. *J Neurol Neurosurg Psychiatry*. 2017; 88:146–151 <https://doi.org/10.1136/jnnp-2016-313867> PMID: [27789541](#)
54. Hayter AL, Langdon DW, Ramnani N. Cerebellar contributions to working memory. *NeuroImage*. 2007; 36: 943–54. <https://doi.org/10.1016/j.neuroimage.2007.03.011> PMID: [17468013](#)
55. Schmahmann JD. From movement to thought: anatomic substrates of the cerebellar contribution to cognitive processing. *Hum Brain Mapp*. 1996; 4: 174–98. [https://doi.org/10.1002/\(SICI\)1097-0193\(1996\)4:3<174::AID-HBM3>3.0.CO;2-0](https://doi.org/10.1002/(SICI)1097-0193(1996)4:3<174::AID-HBM3>3.0.CO;2-0) PMID: [20408197](#)
56. Clausi S, Bozzali M, Leggio MG, Di Paola M, Hagberg GE, Caltagirone C, et al. Quantification of gray matter changes in the cerebral cortex after isolated cerebellar damage: a voxel-based morphometry study. *Neuroscience*. 2009; 162: 827–35. <https://doi.org/10.1016/j.neuroscience.2009.02.001> PMID: [19409211](#)