



## Variable reactivity of particulate organic matter in a global ocean biogeochemical model

Olivier Aumont, Marco van Hulst, Matthieu Roy-Barman, Jean-Claude Dutay, Christian Éthé, Marion Gehlen

### ► To cite this version:

Olivier Aumont, Marco van Hulst, Matthieu Roy-Barman, Jean-Claude Dutay, Christian Éthé, et al.. Variable reactivity of particulate organic matter in a global ocean biogeochemical model. Biogeo-sciences, 2017, 14 (9), pp.2321 - 2341. 10.5194/bg-14-2321-2017 . hal-01528469

**HAL Id: hal-01528469**

**<https://hal.sorbonne-universite.fr/hal-01528469>**

Submitted on 29 May 2017

**HAL** is a multi-disciplinary open access archive for the deposit and dissemination of scientific research documents, whether they are published or not. The documents may come from teaching and research institutions in France or abroad, or from public or private research centers.

L'archive ouverte pluridisciplinaire **HAL**, est destinée au dépôt et à la diffusion de documents scientifiques de niveau recherche, publiés ou non, émanant des établissements d'enseignement et de recherche français ou étrangers, des laboratoires publics ou privés.



Distributed under a Creative Commons Attribution 4.0 International License



# Variable reactivity of particulate organic matter in a global ocean biogeochemical model

Olivier Aumont<sup>1</sup>, Marco van Hulst<sup>2</sup>, Matthieu Roy-Barman<sup>2</sup>, Jean-Claude Dutay<sup>2</sup>, Christian Éthé<sup>1</sup>, and Marion Gehlen<sup>2</sup>

<sup>1</sup>Laboratoire d’Océanographie et du Climat: Expérimentations et Approches Numériques (LOCEAN), IPSL, 4 Place Jussieu, 75005 Paris, France

<sup>2</sup>Laboratoire des Sciences du Climat et de l’Environnement (LSCE), IPSL, CEA–Orme des Merisiers, 91191 Gif-sur-Yvette, France

*Correspondence to:* Olivier Aumont (olivier.aumont@ird.fr)

Received: 6 September 2016 – Discussion started: 27 September 2016

Revised: 17 February 2017 – Accepted: 1 March 2017 – Published: 5 May 2017

**Abstract.** The marine biological carbon pump is dominated by the vertical transfer of particulate organic carbon (POC) from the surface ocean to its interior. The efficiency of this transfer plays an important role in controlling the amount of atmospheric carbon that is sequestered in the ocean. Furthermore, the abundance and composition of POC is critical for the removal of numerous trace elements by scavenging, a number of which, such as iron, are essential for the growth of marine organisms, including phytoplankton. Observations and laboratory experiments have shown that POC is composed of numerous organic compounds that can have very different reactivities. However, this variable reactivity of POC has never been extensively considered, especially in modelling studies. Here, we introduced in the global ocean biogeochemical model NEMO-PISCES a description of the variable composition of POC based on the theoretical reactivity continuum model proposed by Boudreau and Ruddick (1991). Our model experiments show that accounting for a variable lability of POC increases POC concentrations in the ocean’s interior by 1 to 2 orders of magnitude. This increase is mainly the consequence of a better preservation of small particles that sink slowly from the surface. Comparison with observations is significantly improved both in abundance and in size distribution. Furthermore, the amount of carbon that reaches the sediments is increased by more than a factor of 2, which is in better agreement with global estimates of the sediment oxygen demand. The impact on the major macronutrients (nitrate and phosphate) remains modest. However, iron (Fe) distribution is strongly altered, especially in the upper

mesopelagic zone as a result of more intense scavenging: vertical gradients in Fe are milder in the upper ocean, which appears to be closer to observations. Thus, our study shows that the variable lability of POC can play a critical role in the marine biogeochemical cycles which advocates for more dedicated in situ and laboratory experiments.

## 1 Introduction

The biological carbon pump regulates the atmospheric CO<sub>2</sub> levels by transferring large amounts of organic carbon produced by phytoplankton photosynthesis in the upper ocean to the deep interior (e.g. Falkowski et al., 1998). Transport to the ocean’s interior occurs through sinking of organic particles, physical mixing and transport of both particulate and dissolved organic carbon (respectively POC and DOC), and vertical migrations by zooplankton. Of the organic carbon produced in the euphotic zone, only a small fraction escapes recycling in the upper part of the water column and is exported downwards, being sequestered away from the atmosphere. It is suggested that a small modification of the recycling efficiency in the upper ocean can have a significant impact on atmospheric CO<sub>2</sub> (Kwon et al., 2009). The magnitude of the biological carbon pump is predicted to decrease in response to climate change (Steinacher et al., 2010; Bopp et al., 2013), resulting in a less efficient storage of carbon in the ocean.

POC fluxes and concentrations exhibit the strongest gradient in the mesopelagic zone, which is the part of the ocean located between the bottom of the euphotic zone and about 1000 m. They decrease strongly with depth as particles are being fragmented, consumed, and respired by zooplankton and bacteria. Numerous studies have attempted to describe the attenuation of the POC fluxes using simple relationships, the most commonly used being either power law functions (Martin et al., 1987) or exponential functions (Lutz et al., 2002; Boyd and Trull, 2007). In the power law function, the rate at which POC flux decreases with depth is controlled by the exponent  $b$ . In the exponential function, this is determined by the remineralisation length scale  $z^*$ . In many model studies, either  $b$  or  $z^*$  was kept constant to a specified uniform value (e.g. Collins et al., 2011; Hauck et al., 2013; Ilyina et al., 2013).

However, significant variations of these parameters have been evidenced using deep-sea sediment traps and particle imaging (Lamborg et al., 2008; Henson et al., 2012a; Guidi et al., 2015). For instance, the exponent  $b$  has been shown to vary between about 0.4 and 1.75 (Guidi et al., 2015). Furthermore, models that use the simple power law or exponential relationships fail to correctly represent both carbon fluxes and POC concentrations (Dutay et al., 2009, 2015). POC concentrations tend to be strongly underestimated in the deep ocean, which suggests that an excessive loss of POC is predicted in the mesopelagic zone.

Several factors have been proposed to explain the variability in the vertical profile of organic carbon remineralisation. The most popular of these factors is probably the “ballast hypothesis” which stems from the strong correlation between POC fluxes and the load and composition in minerals (biogenic silica, calcium carbonate, and lithogenic materials) found in the deep sediment traps (Francois et al., 2002; Klaas and Archer, 2002; Armstrong et al., 2001). In general, a high preservation efficiency of POC is related to a high flux of calcium carbonate, whereas no correlation has been found with biogenic silica. Calcium carbonate may either act as an efficient ballast for particles as a result of its high density or provide some protection against degradation by heterotrophic organisms (Francois et al., 2002; Klaas and Archer, 2002).

The “ballast hypothesis” is currently debated as no coherent relationship has been found between the sinking speed of particles and the load in minerals (Lee et al., 2009) and the correlation between calcium carbonate and the preservation efficiency of POC in the mesopelagic domain may not be that significant (Henson et al., 2012a). Despite the lack of consensus on the ballast hypothesis, many biogeochemical models currently describe POC fluxes based on it (e.g. Moore et al., 2004; Dunne et al., 2012; DeVries et al., 2014). The other factors that may impact on the remineralisation of POC in the mesopelagic zone include the ecosystem structure (Boyd et al., 1999), temperature (Matsumoto, 2007; Marsay et al., 2015), oxygen (Devol and Hartnett, 2001), and the pressure

effect on bacterial activity (Tamburini et al., 2003; Grossart and Gust, 2009).

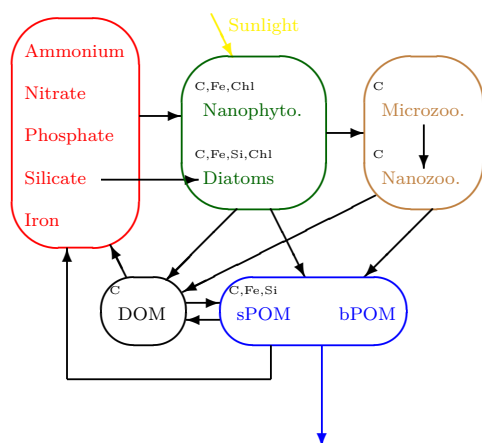
The composition of POC is another factor that has not been extensively considered in previous studies on POC fluxes. Organic matter is composed of numerous compounds that can have very different reactivities. The variable lability of organic matter has been evidenced for dissolved organic carbon in both the ocean (Amon and Benner, 1994; Hansell, 2013; Benner and Amon, 2015) and lakes (Koehler et al., 2012) and for organic carbon in the sediments (Middelburg, 1989; Boudreau and Ruddick, 1991). Several studies have also shown that POC is a complex mixture of compounds with different labilities (Sempéré et al., 2000; Panagiotopoulos et al., 2002; Diaz et al., 2008; Benner and Amon, 2015). The labile fractions of POC can be remineralised in the upper ocean and in the mesopelagic domain, the more refractory fractions being exported to the deep ocean. That could explain the variability in the transfer efficiency of POC to the deep ocean and the slow vertical decrease of POC in the deep ocean (Marsay et al., 2015). With the notable exception of Sempéré et al. (2000), the inhomogeneous reactivity of POC has not been explicitly taken into account in marine biogeochemical modelling studies; the vast majority of the models use a single uniform decay rate for the whole particulate organic pool. Very recently, Jokulsdottir and Archer (2016) have designed a very detailed Lagrangian model of POC which explicitly assumes that aggregates are composed of various compounds with different labilities, in a manner similar to our approach. Unfortunately, they have not explored in their study the impacts this varying lability has on the POC distribution and on the POC fluxes.

Here, we explore how a variable reactivity of POC affects the vertical export of carbon by sinking particles, the POC concentrations in the ocean’s interior, and the marine carbon cycle overall. Several theoretical frameworks have been proposed to describe the variable lability of POC (e.g. Boudreau and Ruddick, 1991; Rothman and Forney, 2007; Vähätalo et al., 2010). We have implemented in the coupled ocean physical and biogeochemical model NEMO-PISCES (Aumont et al., 2015) the reactivity continuum (RC) model proposed by Boudreau and Ruddick (1991). Using that model, we analyse the consequences of a variable lability of organic matter on the spatial distribution of POC and on the marine carbon cycle.

## 2 Methods

### 2.1 The biogeochemical global ocean model

In this study, we use the biogeochemical model PISCES-v2 (Aumont et al., 2015) as part of the modelling framework NEMO (Madec, 2008). PISCES, presented in Fig. 1, has been employed for many other studies concerning trace metals, as well as large-scale ocean biogeochemistry



**Figure 1.** The biogeochemical model PISCES. DOM stands for dissolved and POM for particulate organic matter.

(e.g. Gehlen et al., 2007; Arsouze et al., 2009; Dutay et al., 2009; Tagliabue et al., 2010; Van Hulst et al., 2014). The model simulates the biogeochemical sources and sinks of 24 prognostic tracers, including five limiting nutrients (Fe,  $\text{PO}_4$ ,  $\text{Si}(\text{OH})_4$ ,  $\text{NO}_3$ , and  $\text{NH}_4$ ). Two phytoplankton groups (nanophytoplankton and diatoms) and two zooplankton size classes (microzooplankton and mesozooplankton) are represented in PISCES. Fixed Redfield ratios are prescribed for N and P to values proposed by Takahashi et al. (1985), whereas the ratios of both Fe and Si to C are explicitly modelled. There are three non-living compartments: semi-labile dissolved organic carbon and two size classes of POC.

As this study focuses on POC, we briefly describe the standard parameterisation used in PISCES to model the evolution of this carbon pool. For more information, the reader is referred to the complete description of PISCES-v2 presented in Aumont et al. (2015). The two size classes of POC correspond to small slow-sinking POC (sPOM) and large fast-sinking POC (bPOM). The nominal cutoff size between these two size classes is set at  $100\ \mu\text{m}$ . Both pools of POC are produced by the aggregation of phytoplankton, the mortality of both phytoplankton and zooplankton, the egestion of fecal pellets, and the coagulation of dissolved organic carbon. It is consumed by zooplankton feeding and remineralisation by heterotrophic bacteria. Bacteria are not explicitly modelled and a first-order kinetics is assumed to represent the impact of the bacterial activity on POC. The specific degradation rate  $\tilde{k}$  is the same for both size classes of POC and depends on temperature with a  $Q_{10}$  of 1.9. In this version of PISCES, the sinking speeds of both POC compartments are supposed constant and uniform and are set to  $2\ \text{m d}^{-1}$  for small POC and to  $50\ \text{m d}^{-1}$  for large POC.

This model is embedded in the ORCA2-LIM configuration of NEMO (Madec, 2008). The spatial resolution is about  $2^\circ$  by  $2^\circ \cos(\phi)$  (where  $\phi$  is the latitude) with an increased meridional resolution to  $0.5^\circ$  in the equatorial domain. The

model has 30 vertical layers, with an increased vertical thickness from 10 m at the surface to 500 m at 5000 m. Representation of the topography is based on the partial-step thicknesses (Barnier et al., 2006). Lateral mixing along isopycnal surfaces is performed both on tracers and momentum (Lengaigne et al., 2003). The parameterisation of Gent and McWilliams (1990) is applied poleward of  $10^\circ$  to represent the effects of non-resolved mesoscale eddies. Vertical mixing is modelled using the turbulent kinetic energy (TKE) scheme of Gaspar et al. (1990), as modified by Madec (2008). The dynamics used to drive PISCES is identical to that used in Aumont et al. (2015).

## 2.2 The reactivity continuum model

In the standard version of PISCES, as commonly in biogeochemical models, the decomposition of POC is described following first-order kinetics. Most frequently, a single constant decay rate  $k$  is used which implies that all components of organic matter degrade at the same rate. However, organic matter is a complex mixture of compounds of varying origin and different reactivities. Therefore, a single decay constant often fails to represent the observed degradation kinetics of organic matter (e.g. Middelburg et al., 1993; Del Giorgio and Davis, 2002). To overcome that problem, several models have been proposed (Arndt et al., 2013). In multi-G models, organic matter is split into discrete pools with different labilities (e.g. Ogura, 1975). The power model describes the mean first-order decay coefficient  $\tilde{k}$  as a power function of the apparent age of organic matter  $t$  (Middelburg, 1989). The RC models extend the formalism introduced in the multi-G models (Aris and Gavalas, 1966). Instead of a few discrete pools of different reactivities, the RC models use an infinite number of pools characterised by a continuous distribution of reactivities in the substrate. Several functions have been proposed to model this distribution: a gamma distribution (Boudreau and Ruddick, 1991), a beta function (Vähätalo et al., 2010), and a log-normal function (Rothman and Forney, 2007). The power model and the RC models have been shown to be particular cases of a more general formulation called q-theory (Bosatta and Ågren, 1991, 1995).

In this study, we choose to describe the decomposition of particulate organic carbon according to the RC model. All the variables and parameters used in this section to formulate the parameterisation of POC lability are listed in Table 1. As in Boudreau and Ruddick (1991), the distribution of reactivities of newly produced POC is represented by a gamma distribution:

$$g(k, 0) = \frac{g_0 k^{\nu-1} e^{-ak}}{\Gamma(\nu)}, \quad (1)$$

where  $\nu$  describes the shape of the distribution near  $k = 0$ , and  $a$  (days) is the average lifetime of the more reactive components of POC. The corresponding cumulative distribution

**Table 1.** Parameters and variables with associated units. When two values are specified in the value column, they refer to respectively sPOC and bPOC.

Symbol	Description	Units	Value
$\nu$	Shape parameter of the gamma distribution	–	1.0
$a$	Average lifetime of the more reactive component	d	See Table 2
$t^*$	Pseudo time variable	d	$f(T)t$
$T$	Temperature	°C	Variable
POC	Particulate organic carbon	mmol m <sup>-3</sup>	Variable
sPOC	Small particulate organic carbon	mmol m <sup>-3</sup>	Variable
bPOC	Large particulate organic carbon	mmol m <sup>-3</sup>	Variable
$\tilde{k}$	Mean degradation rate of fresh POC	d <sup>-1</sup>	See Table 2
$k_i$	Boundary in the lability space	d <sup>-1</sup>	From Eq. (5)
$\mathcal{G}(\tilde{k}_i, t)$	Fraction of POC with degradation rate $\in [k_i, k_{i+1}[$	–	Variable
$\mathcal{G}_{\text{mxl}}(\tilde{k}_i, t)$	Mean $\mathcal{G}(\tilde{k}_i, t)$ in the mixed layer	–	From Eq. (9)
$\bar{k}_i$	Mean degradation rate of $\mathcal{G}(\tilde{k}_i, 0)$	d	From Eq. (7)
$P_{\text{POC}}$	Production of POC	mol m <sup>-3</sup> d <sup>-1</sup>	Variable
$S_{\text{POC}}$	Sink of POC	mol m <sup>-3</sup> d <sup>-1</sup>	Variable
$w_{\text{POC}}$	Settling speed of POC	m d <sup>-1</sup>	2, 50
$z_{\text{mxl}}$	Depth of the mixed layer	m	Variable
$\bar{k}$	Mean degradation rate of POC	d <sup>-1</sup>	Variable
$T_{\text{mxl}}$	Mean temperature in the mixed layer	°C	Variable
$f(T)$	Temperature dependency of degradation rate	–	Variable
$b$	Exponent of the Martin et al. (1987) power law function	–	Variable

function (CDF) is defined as

$$\mathcal{G}(k, 0) = \frac{\gamma(\nu, ak)}{\Gamma(\nu)} = \frac{\int_0^{ak} x^{\nu-1} e^{-x} dx}{\int_0^\infty x^{\nu-1} e^{-x} dx}, \quad (2)$$

where  $\gamma(\nu, ak)$  is the lower incomplete gamma function. To get the time-evolved distribution, we assume first-order decay for each lability class:

$$g(k, t) = \frac{g_0 k^{\nu-1} e^{-(a+f(T)t)k}}{\Gamma(\nu)}, \quad (3)$$

where  $f(T)$  is a function of temperature  $T$  (°C). As in the standard version of PISCES, the dependency to temperature corresponds to a  $Q_{10}$  of 1.9. In that equation, the effect of temperature on the distribution is equivalent to defining a pseudo time variable  $t^* = f(T)t$ .

In a closed system with a constant temperature,  $T$ , the mean remineralisation rate of POC decreases with time and is described by a simple function of the pseudo time variable  $t^*$  (Boudreau and Ruddick, 1991; Boudreau et al., 2008):

$$\frac{d\text{POC}}{dt^*} = -\frac{\nu}{a+t^*} \text{POC}. \quad (4)$$

Unfortunately, in open systems such as the ocean, the RC model cannot be used in its continuous form since transport, production, and consumption of organic matter alter the shape of the distribution. As a consequence, this distribution can significantly deviate from the initial gamma distribution. An option would be to model the moments of the reactivity

distribution following an approach similar to what is done for instance in the atmosphere for aerosols (Milbrandt and Yau, 2005) or in the ocean for traits (Merico et al., 2009). However, the set of moment equations should be closed using a moment closure approximation to truncate the system at a certain order. Since the distribution can deviate to a non-specific form, the number of moments that should be tracked becomes very large (over 10 moments based on some preliminary tests we performed), which makes that method computationally inefficient. Instead, the distribution is discretised by separating both small and large POC into a finite number of pools with degradation constants that are equally spaced in the natural logarithmic transform of the reactivity space. In this study, we have arbitrarily set the smallest and largest boundaries of the lability classes in the reactivity space to  $\tilde{k}/1000$  and  $10\tilde{k}$ , respectively, where  $\tilde{k}$  (d<sup>-1</sup>) is the mean degradation rate of freshly produced POC. Each boundary  $k_i$  (d<sup>-1</sup>) in the lability space is computed as

$$k_i = \frac{1}{1000} (1 \times 10^4)^{\frac{i-2}{n-2}} \tilde{k} \quad \text{for } i = 2, n, \quad (5)$$

where  $n$  is the number of lability classes. The first  $k_1$  and last  $k_{n+1}$  boundaries are defined as

$$k_1 = 0 \quad \text{and} \quad k_{n+1} = +\infty. \quad (6)$$

The fraction  $\mathcal{G}(\tilde{k}_i, 0)$  and the mean degradation rate  $\bar{k}_i$  (d<sup>-1</sup>) of POC with degradation constants between  $k_i$  and  $k_{i+1}$  are

$$\mathcal{G}(\bar{k}_i, 0) = \frac{\gamma(v, ak_{i+1}) - \gamma(v, ak_i)}{\Gamma(v)} \quad (7)$$

$$\bar{k}_i = \frac{\gamma(v+1, ak_{i+1}) - \gamma(v+1, ak_i)}{\Gamma(v)} \text{ for } i = 1, n.$$

We thus use a multi-G model to simulate the reactivity continuum. An identical approach has been used by Dale et al. (2015) to model the degradation of the organic matter in the sediments. Based on experiments performed with a 1-D model, the number of pools has been set to 15 for both small and large POC, which results in a less than 1 % error relative to the exact solution. Gamma functions are computed in our model using the algorithm proposed by MacLeod (1989).

An explicit representation of the reactivity of the organic matter would require to have 30 distinct pools, which would more than double the number of variables in PISCES (24 tracers including large and small POC). This would thus considerably increase the computing cost of the model. To overcome that problem, we made a rather strong assumption: we postulated that the lability distribution of POC is insensitive to ocean transport and is only modified by sinking, by the biological sources and sinks, and by vertical mixing in the mixed layer. This assumption is further discussed in the discussion section of this study. The problem is thus reduced to a 1-D framework and the vertical distribution of each lability class can be iteratively solved starting from the base of the mixed layer. In a Lagrangian framework, the system to be solved is

$$\begin{cases} \frac{dz}{dt} = w_{\text{POC}} \\ \frac{d\mathcal{G}(\bar{k}_i, t)\text{POC}}{dt} = \mathcal{G}(\bar{k}_i, 0)P_{\text{POC}} - \mathcal{G}(\bar{k}_i, t)S_{\text{POC}} - \bar{k}_i f(T)\mathcal{G}(\bar{k}_i, t)\text{POC} \\ \mathcal{G}(\bar{k}_i, t) = \mathcal{G}_{\text{mixl}}(\bar{k}_i, t) \text{ if } z = z_{\text{mixl}}, \end{cases} \quad (8)$$

where  $z$  (m) is positive downwards,  $P_{\text{POC}}$  ( $\text{mol m}^{-3} \text{d}^{-1}$ ) denotes the production of particulate organic carbon,  $S_{\text{POC}}$  ( $\text{mol m}^{-3} \text{d}^{-1}$ ) represents the sinks of POC,  $w_{\text{POC}}$  ( $\text{m d}^{-1}$ ) the settling velocity of POC,  $z_{\text{mixl}}$  (m) the depth of the bottom of the mixed layer, and  $\mathcal{G}(\bar{k}_i, t)$  corresponds to the mass fraction of POC with a decay rate  $\bar{k}_i$  at time  $t$ . Sources of POC ( $P_{\text{POC}}$ ) are mainly mortality of phytoplankton and zooplankton, exudation of fecal pellets and coagulation of phytoplankton cells. All these processes are assumed to produce fresh new POC characterised by the lability distribution  $\mathcal{G}(\bar{k}_i, 0)$ . Sinks of POC essentially correspond to grazing by zooplankton. We assume here that grazing does not depend on lability; i.e. each lability class is impacted proportionately with its relative contribution  $\mathcal{G}(\bar{k}_i, t)$ . The sinking speed  $w_{\text{POC}}$  does not need to be constant with depth. Assuming spatially constant sources, sinks, and sinking speeds within a grid cell (i.e. sources, sinks, and sinking speeds are homogeneous within each grid cell), this system can be solved analytically over each grid cell. The vertical distribution of each lability class

(with a decay rate  $\bar{k}_i$ ) is then computed iteratively over the water column starting from the mixed layer. A mean  $\bar{k}$  ( $\text{d}^{-1}$ ) is inferred from that lability distribution, which is then used in PISCES to model the decomposition of POC (the sink term of POC due to degradation by bacterial activity is computed as  $-\bar{k}\text{POC}$ ; for more information on the description of POC in PISCES, please refer to Aumont et al., 2015). As a consequence,  $\bar{k}$  displays both vertical and horizontal variations and is thus a 3-D field. Of course, this computation is done independently for small and large POC.

The solution of system (8) requires one to know the distribution at the bottom of the mixed layer  $\mathcal{G}_{\text{mixl}}(\bar{k}, t)$ . In the mixed layer, ocean dynamics, especially vertical mixing, cannot be neglected. Since vertical mixing is strong, tracers in the mixed layer, including the reactivity distribution, can be considered homogeneous. Using that assumption, the mean reactivity distribution  $\mathcal{G}_{\text{mixl}}(\bar{k}_i, t)$  can be computed by integrating Eq. (8) over the mixed layer:

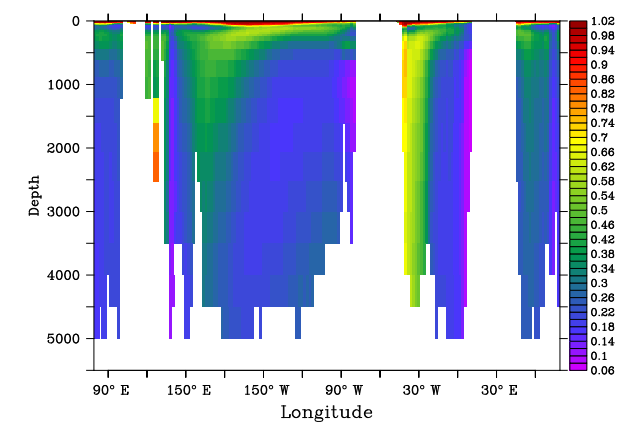
$$\mathcal{G}_{\text{mixl}}(\bar{k}_i, t) = \frac{\int_0^{z_{\text{mixl}}} \mathcal{G}(\bar{k}_i, 0) P_{\text{POC}} dz}{\int_0^{z_{\text{mixl}}} (\bar{k}_i f(T_{\text{mixl}})\text{POC} + S_{\text{POC}}) dz + w_{\text{POC}}\text{POC}(z = z_{\text{mixl}})}, \quad (9)$$

where  $T_{\text{mixl}}$  ( $^{\circ}\text{C}$ ) is the mean ocean temperature in the mixed layer and  $z_{\text{mixl}}$  (m) is the depth of the mixed layer. The mixed layer is the only domain where the lability distribution is impacted by vertical mixing.

The lability parameterisation introduces an extra cost of about 20 %, but it depends of course on the number of lability pools. To further considerably reduce this extra cost, one could be tempted to adopt the assumption of a closed system. In that case, the model simplifies to Eq. (4) for both small and large POC. Figure 2 compares the vertical lability distribution of small POC using that strong assumption to the prediction using the complete lability parameterisation. Differences are large and can reach almost an order of magnitude in the interior of the ocean. Thus, the assumption of a closed system introduces large errors. The sources and sinks of POC in the interior of the ocean play a major role on the vertical and horizontal patterns of the lability distribution.

### 2.3 Model experiments

The model set-up used in this study is exactly identical to that described in Aumont et al. (2015) except for the modifications made on POC described above. All modelled experiments presented here have been initialised from the quasi-steady-state simulation presented in Aumont et al. (2015). Two different simulations have been performed: a control experiment which is based on the standard version of PISCES (noRC) and a second experiment in which the variable lability of POC based on the RC model is used (RC). In the RC experiment, we assumed that the shape factor  $v$  is equal to 1. The lifetime parameter  $a$  (day) has been prescribed so that the global mean first-order degradation rate in the top 50 m of



**Figure 2.** Vertical distribution along the Equator of the ratio between the remineralisation rate of small POC computed when the assumption of a closed system is made and the remineralisation rate is computed in the standard RC experiment.

**Table 2.** Model simulations.

Experiment	No. lability classes <sup>a</sup>	$\tilde{k}$	$a$
noRC	1	$0.025\text{ d}^{-1}$	
RC	15	$0.035\text{ d}^{-1\text{b}}$	28.57 d

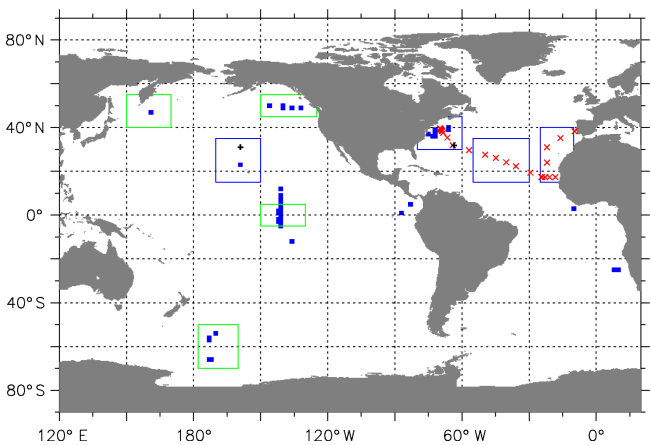
<sup>a</sup> For each POC compartment (sPOC and bPOC). <sup>b</sup> Remineralisation rate of freshly produced POC.

the ocean is identical to the value prescribed in the standard model configuration (the initial degradation rate  $\tilde{k} = v/a$ ). Each experiment has been run for 1000 years. After that duration, POC distribution was in an approximate steady state. In Table 2, we present an overview of the two simulations.

2.4 Observations

To test the model performance, we use measurements of POC concentrations performed in the Atlantic and Pacific oceans, whose stations are presented in Fig. 3. They relatively sparsely cover these oceans. Unfortunately, to our knowledge, there are no particle data available in the other ocean basins. Since the POC concentration is an ancillary parameter of GEOTRACES, the number of POC data should considerably increase in the near future. In the Intermediate Data Product (IDP2014) of GEOTRACES released recently (Mawji et al., 2015), only the GA03 transect (the red crosses displayed in Fig. 3 in the North Atlantic Ocean) includes POC observations.

Observed POC fluxes are from Dunne et al. (2005), Gehlen et al. (2006), and Le Moigne (2013). In these datasets, data have been obtained from sediment traps and/or <sup>234</sup>Th. The deep sediment trap data in Gehlen et al. (2006) have not been Th-corrected. In addition to these data, we also use a global distribution of oxygen fluxes at the sediment–water interface (Jahnke, 1996). Assuming full oxic remineralisation of POC,



**Figure 3.** The particle data currently available. The blue squares present the stations of the data collection by Lam et al. (2011). The red crosses show the station coordinates of Hayes et al. (2015) and Lam et al. (2015b). The two black plus signs north of Hawaii and east of Bermuda are the stations of Druffel et al. (1992). The rectangles define the regions of the profiles discussed in Section 3 (green: up to 1 km depth; blue: up to 6 km depth).

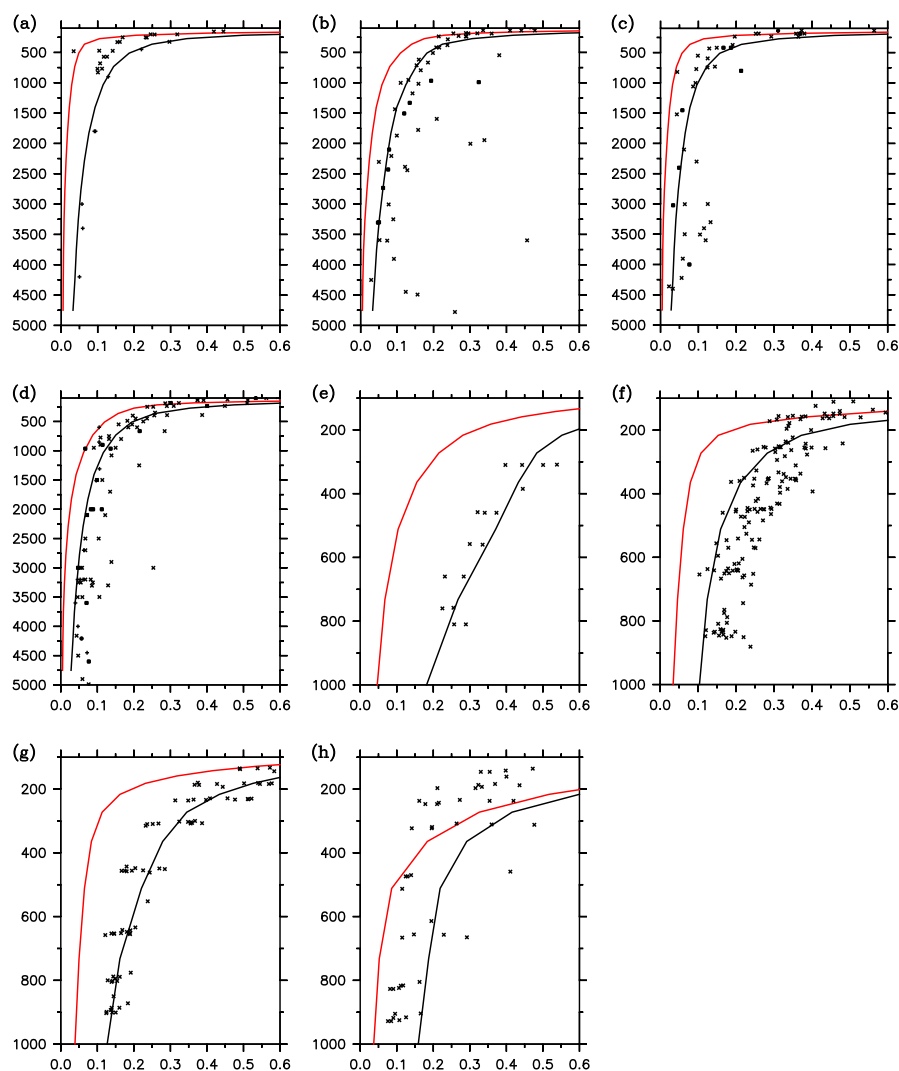
and using the value of the Redfield ratio of PISCES, we computed from the oxygen fluxes the equivalent fluxes of POC to the sediment. Finally, annual mean POC fluxes to the sediments from Seiter et al. (2005) have also been used here. These fluxes were reconstructed from correlations based on the organic carbon content in surface sediments and on the bottom oxygen concentrations.

3 Results

3.1 Concentrations of POC

Figure 4 presents POC profiles in the Atlantic and Pacific oceans respectively. Both data and model results are displayed below 100 m since we focus on the fate of particles once they have left the productive upper zone. Furthermore, in the euphotic zone, a significant fraction of POC consists of living organisms such as phytoplankton and zooplankton, which are out of the scope of this study. In the observations, POC concentrations range from about 0.4 to more than 2.5  $\mu\text{M}$  in the upper part of the water column, the lowest values being found in the oligotrophic areas. In the upper part of the mesopelagic domain, between 100 and about 500 m, POC steeply decreases to reach values that range between 0.05 and 0.15  $\mu\text{M}$ . In the deep ocean, concentrations remain relatively constant and decrease only slowly to the bottom of the ocean. Elevated concentrations of POC can be observed in the deep ocean and correspond to nepheloid layers generated by the resuspension of sedimentary materials or by hydrothermal vents (such as in the oligotrophic Atlantic Ocean; Fig. 4c) (Lam et al., 2015a).





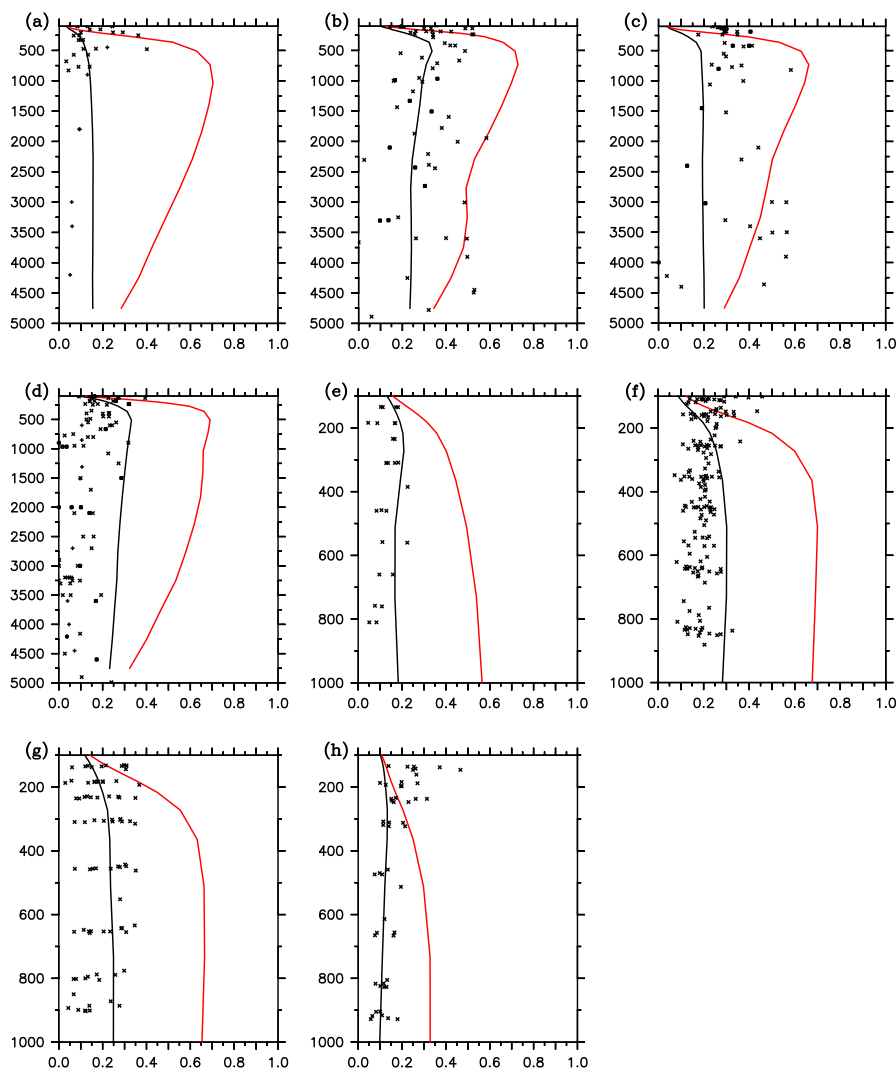
**Figure 4.** Modelled and observed total POC concentrations ( $\mu\text{M}$ ) in different regions of the ocean: (a) western, (b) oligotrophic, and (c) eastern North Atlantic Ocean; (d) Hawaii; (e) northwestern, (f) northeastern, (g) central, and (h) southern Pacific Ocean. The continuous lines are concentrations averaged over the region marked by the blue and green rectangles on the map of Fig. 3: without (in red) and with the reactive continuum (RC) parameterisation (in black). The black speckles are observations in the respective regions from Druffel et al. (1992) and Lam et al. (2011, 2015b).

Our model experiments reproduce quite correctly the general shape of the observed profiles as shown in Fig. 4. However, in the `noRC` model configuration, the decrease in POC is too steep and concentrations in the bottom part of the mesopelagic domain are strongly underestimated by at least a factor of 2. Furthermore, POC continues to strongly decrease in the deep ocean where modelled concentrations are at least an order of magnitude too low relative to the observations. The parameterisation of a variable lability of biogenic organic matter (`noRC` experiment) improves quite notably the agreement between the model and the observations, both in the mesopelagic domain and in the deep ocean. In particular, POC concentrations in the deep ocean are now compara-

ble to the observed values and do not strongly decrease with depth. However, two main biases are still produced by the model. First, POC concentrations tend to be overestimated at around 100 m and are explained by the living biomass, which suggests that PISCES overpredicts phytoplankton and zooplankton levels in the lower part and just below the euphotic zone. Second, elevated POC concentrations are not simulated in the deep ocean. Such a result is not surprising since the model represents neither resuspension of sediments nor hydrothermal vents.

Figure 5 presents the relative contribution of large POC to total POC. In the observations, this contribution does not exhibit any significant vertical trend. Despite a significant





**Figure 5.** The modelled and observed relative contributions of large POC to total POC concentration ( $bPOC/(sPOC + bPOC)$ ), in  $\mu M$  in different regions of the ocean: (a) western, (b) oligotrophic, and (c) eastern North Atlantic Ocean; (d) Hawaii; (e) northwest, (f) northeast, (g) central, and (h) southern Pacific Ocean. Solid lines denote concentrations averaged over the regions marked by the blue and green rectangles on the map of Fig. 3: without (in red) and with the reactive continuum (RC) parameterisation (in black). The black speckles are observations in the respective regions from Druffel et al. (1992) and Lam et al. (2011, 2015b).

scatter, it remains more or less constant with depth at values that are generally comprised between 0.1 to 0.4. In the standard configuration of the model, the fraction of large organic particles steeply increases with depth in the upper part of the mesopelagic domain. Then it remains relatively stable below 500 m to values around 0.7. Below the euphotic zone, small particles are rapidly removed from the water column due to their slow sinking speed associated to a relatively strong remineralisation. As a consequence, the contribution of large particles rises rapidly as POC sinks downward. Then, small particles are continuously produced by the degradation of large particles and a quasi-steady state is reached between this source and the loss from remineralisa-

tion. This means that small POC in the deep ocean as simulated in the `noRC` experiment is locally produced. Thus, the organic materials in this size fraction of POC is very young and none of it originates directly from production in the upper ocean. This result is in apparent contradiction with the age deduced from the radiocarbon isotopic ratio of suspended POC (Druffel and Williams, 1990; McNichol and Aluwihare, 2007), which suggests that a fraction of suspended POC has not been produced recently. Nevertheless, alternative explanations may explain the increasing apparent age of this pool with depth, such as the incorporation of old refractory DOC (McNichol and Aluwihare, 2007).

The vertical profiles of the relative contribution of large POC are notably impacted by the lability parameterisation introduced in this study (Fig. 5). In the RC experiment, this contribution does not significantly increase with depth. Below the upper 200 m, the proportion of large POC stabilises and remains then almost constant to values between 0.1 and 0.3. The simulated profiles thus fall in the observed range. When produced, a significant fraction of POC is refractory and escapes rapid remineralisation in the upper ocean. This refractory component builds up in small POC because of its slow sinking speed, which explains the dominant contribution by this pool in the mesopelagic domain and in the deep ocean. In contrast with the noRC experiment, a significant fraction of small POC originates from the surface.

These results suggest a strong improvement of the representation of POC below the ocean surface, especially for small POC. A more quantitative evaluation of the model experiments is presented in Table 3. In addition to classical statistical indices (the correlation coefficient ( $r$ ), the root mean square error (RMSE), and the bias), two additional performance indicators have been used as suggested in previous skill assessment studies (Allen et al., 2007; Stow et al., 2009; Vichi and Masina, 2009): the reliability index (RI) (Leggett and Williams, 1981) and the modelling efficiency (MEF) (Nash and Sutcliffe, 1970). The RI indicates the average ratio by which the model differs from the observations. The RI should be close to 1. The MEF measures how well the model predicts the observations relative to the average of the observations. A value of 1 denotes a close match with the observations. A negative value means that the average of the observations is a better predictor than the model.

The scores of the RC experiment are much better than those of the standard model, especially for the RI and the MEF. In particular, the MEF is positive and relatively close to 1. Such a result proves that the model performs better than the average of the observations, which is not the case of the model without the variable lability parameterisation. The bias is notably reduced. Such improved scores in all statistical indicators confirm the visual inspection of the vertical profiles displayed in Fig. 4. In contrast, the correlation coefficient  $r$  is, compared to the other indicators, only modestly improved. This suggests that the spatial patterns of POC are not strongly impacted by the new lability parameterisation.

### 3.2 Fluxes of POC

Table 4 shows the area-integrated carbon fluxes of the world ocean, according to our simulations and estimates based on observations. The primary production predicted in both simulations ranges from 41 to 52 PgC year<sup>-1</sup> and lies within the observed estimates. The export fluxes from the euphotic zone are highest for the simulation without lability, consistent with the higher global primary production rate. The lowest productivity and export out of the euphotic zone are predicted by the RC experiment. Conversely, the latter experiment pro-

**Table 3.** Statistical model–data comparison of the two simulations for the whole particle dataset displayed in Fig. 3. The upper ocean has been excluded from the analysis (defined as less than 200 m). RMSE, RI, and MEF are, respectively, the root mean square error, the reliability index, and the modelling efficiency (see text for more information).

	noRC	RC
$n$	2656	2656
$r$	0.7	0.77
RMSE	0.14	0.08
Bias	0.12	0.02
RI	4.9	1.6
MEF	−0.6	0.71

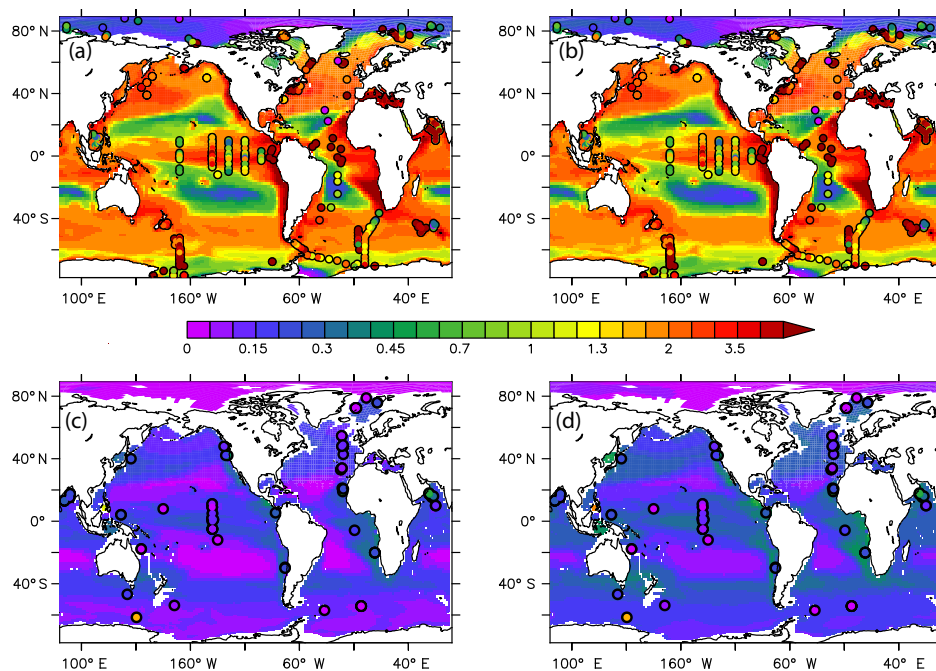
duces the highest export at 2000 m as well as a flux to the sediments that is more than twice as high as in the standard model configuration. Such higher export in the deep ocean stems from the much higher concentrations of small POC in the deep ocean as shown in the previous section. Thus, the increase in export is explained by a higher abundance of small particles. On the global scale, the relative contribution of small POC rises from almost 0 in the noRC experiment to about 20 % in the RC experiment. This significant contribution of small, slowly sinking particles to the export of carbon in the interior of the ocean is supported by recent observations (Durkin et al., 2015). The export at 2000 m, about 0.8 PgC year<sup>-1</sup>, is overestimated relative to recent estimates by Henson et al. (2012b) and Guidi et al. (2015) of, respectively, 0.45 and 0.33 PgC year<sup>-1</sup>. Since the observed POC concentrations appear to be well reproduced by the model, this suggests that the sinking speeds of the biogenic organic particles might be overestimated. In contrast, the predicted POC export to the deep-sea sediments falls on the low end of the estimated range.

Figure 6 shows the spatial distribution of the annual mean fluxes of POC at 100 and at 2000 m in the noRC and RC experiments. At 100 m, fluxes display very similar spatial patterns. They span about 2 orders of magnitude with low values in the oligotrophic subtropical gyres and much higher values in the high latitudes and in the eastern boundary upwelling systems such as the Peru and the Benguela upwelling regions, where they exceed 4 mol C m<sup>-2</sup> year<sup>-1</sup>. The most noticeable difference between the two experiments is a weaker export in the Southern Ocean in the RC experiment. The horizontal patterns are qualitatively similar to those published by Henson et al. (2012b). However, our simulated export fluxes are on average larger, which explains our larger global mean estimate: 8.1–9 versus 4 PgC year<sup>-1</sup> in Henson et al. (2012b) (see Table 4). A comparison to individual sediment trap data is rather challenging because they exhibit a large scatter. Furthermore, several studies suggest that estimates based on sediment traps may substantially underestimate actual particle export, especially in the low latitudes (Quay,

**Table 4.** Primary production and fluxes of POC ( $\Phi$ ) integrated over the global ocean for the different simulations, and estimates based on observations. All numbers are in units of  $\text{PgC year}^{-1}$  of carbon. The numbers in parentheses denote the fluxes due to small POC. The photic depth is defined as the depth at which photosynthetic available radiation equals 1 % of the value at the ocean surface.  $\Phi_{\text{sed}} (z > 1000 \text{ m})$  is the flux of POC to the sediments whose depth is deeper than 1000 m.

Simulation	Primary production	$\Phi_{\text{photic depth}}$	$\Phi (z = 2000 \text{ m})$	$\Phi_{\text{sed}} (z > 1000 \text{ m})$
nORC	52	9 (3.6)	0.56 (0.01)	0.19 (0)
RC	41	8.1 (3.6)	0.81 (0.17)	0.42 (0.11)
Published estimates	40–60 <sup>a</sup>	4–12 <sup>b</sup>	0.33–0.66 <sup>c</sup>	0.5–0.9 <sup>d</sup>

<sup>a</sup> From Carr et al. (2006). <sup>b</sup> From Siegel et al. (2014), Laws et al. (2000), Lutz et al. (2007), Dunne et al. (2007), and Henson et al. (2011). <sup>c</sup> From Henson et al. (2012b) and Guidi et al. (2015). <sup>d</sup> From Jahnke (1996) and Seiter et al. (2005).



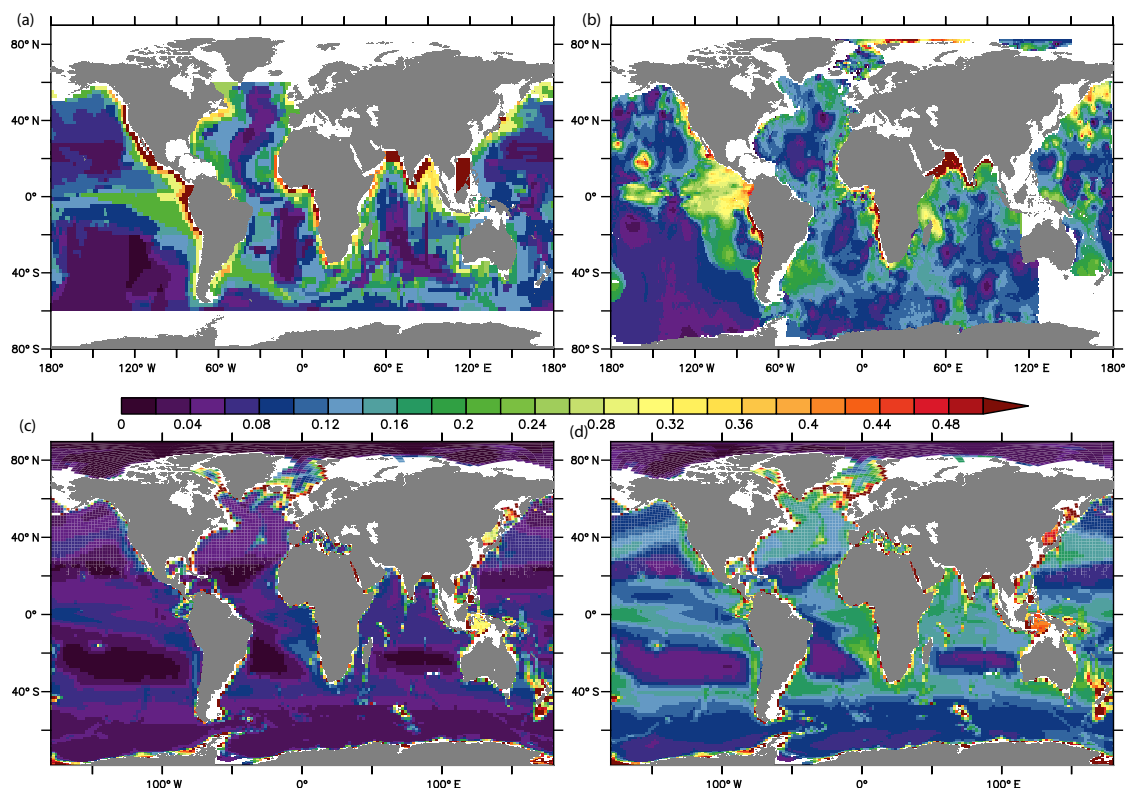
**Figure 6.** Sequestration of POC. The panels on the left show POC fluxes for the simulation without the lability parameterisation; i.e. sPOC and bPOC have a single lability (nORC). Those on the right are with the lability parameterisation (RC). The upper two panels (a, b) show the modelled flux at 100 m; the observations are from the same depth  $\pm 20 \text{ m}$ . Panels (c, d) show the flux through 2000 m; the observations are at the same depth  $\pm 400 \text{ m}$ . The datasets used in these figures are from Dunne et al. (2005), Gehlen et al. (2006), and Le Moigne (2013). Fluxes are in  $\text{mol m}^{-2} \text{ year}^{-1}$ .

1997; Weber et al., 2016). Problems may arise from analytical biases related to the  $^{234}\text{Th}$ -based correction of the carbon fluxes (Quay, 1997). Since our focus is the fate of particles and the export of carbon in the mesopelagic domain and in the deep ocean, shallow export is not further discussed.

Fluxes at 2000 m are much lower than at the euphotic depth (Fig. 6c and d). Their horizontal variability is also reduced since they span about 1 order of magnitude, ranging from around 0.1 to less than  $1 \text{ mol C m}^{-2} \text{ year}^{-1}$ . As expected from the global mean fluxes (Table 4), values predicted in the RC experiment are higher than in the nORC experiment. As already discussed, this increase in export is explained by the much larger contribution from small POC

when the lability parameterisation is applied. Comparison with published horizontal distributions (Henson et al., 2012b; Guidi et al., 2015) shows quite similar horizontal patterns but suggests that our predicted fluxes are overestimated. This is confirmed by evaluation against individual sediment trap data shown in Fig. 6, even though these data are very sparse (see also Fig. S1 in the Supplement).

The benthic oxygen demand provides an indirect measurement of the biogenic organic carbon flux to the sediments, at least when anoxic processes are negligible, which is generally true in deep-sea sediments (Archer et al., 2002). Figure 7 compares POC fluxes to the sediments derived from a global database of the benthic oxygen demand (Jahnke, 1996; Seiter



**Figure 7.** Annual mean POC fluxes ( $\text{mol m}^{-2} \text{year}^{-1}$ ) to the sediments reconstructed (a) from oxygen fluxes (Jahnke, 1996) and (b) from correlations based on the organic carbon content in surface sediments and the bottom oxygen concentrations (Seiter et al., 2005). Panels (c, d) show the corresponding fluxes as predicted in the noRC and RC experiments respectively.

et al., 2005) with those from our model simulations. As opposed to the model without lability, the order of magnitude and basic horizontal patterns predicted by the lability simulation compare well with the observations. Such agreement appears in apparent contradiction with the POC fluxes at 2000 m, which were found to be too large.

## 4 Discussion

### 4.1 Model caveats

This study tests the hypothesis that POC is made of various compounds with varying lability. Several studies based on observations support that hypothesis (e.g. Sempéré et al., 2000; Panagiotopoulos et al., 2002; Diaz et al., 2008; Benner and Amon, 2015). To describe this variable lability of POC, we have made the rather strong assumption that the reactivity of newly produced POC follows a gamma distribution. Several motives explain this choice. Firstly, the degradation of POC in the sediments has been shown to be described well by the RC model based on a gamma distribution (e.g. Boudreau and Ruddick, 1991; Marquardt et al., 2010; Wadham et al., 2012). Since organic matter in the sediments is deposited

from the ocean, this supports the assumption that the reactivity of POC that reaches the sediments can be adequately modelled by a gamma distribution. Secondly, the gamma model provides a complete quantitative description of the heterogeneous biodegradability of particulate organic matter (POM), which agrees with qualitative descriptions of degradation kinetics for POM (Amon and Benner, 1996). Thirdly, the assumption of a gamma distribution makes the mathematical handling quite convenient since the mean degradation rate constant can be easily computed (see Eq. 4).

Several alternative expressions of the biodegradability distribution have been proposed in the literature: a beta function (Vähätalo et al., 2010), a log-normal distribution (Rothman and Forney, 2007), and Gaussian and Weibull distributions (Burnham and Braun, 1999). However, despite their different mathematical expressions, all these models lead to quite similar mean kinetics for POC (Vähätalo et al., 2010; Boudreau et al., 2008).

A supplementary interesting aspect of the gamma model is that it can be described by only two parameters: the shape parameter  $\nu$  and the rate parameter  $a$ . For comparison, a three-pool multi-G model requires five parameters. In this study, we prescribed both parameters to be constant and uniform over the global ocean. For the sake of simplicity,  $\nu$  has been

set to 1. Then, the rate parameter  $a$  has been computed to obtain a global mean first-order degradation rate in the top 50 m of the ocean that is identical to the value prescribed in the standard model configuration (the initial degradation rate  $k = \nu/a$ ). However, several studies have shown that this parameter can be quite variable and can range from 0.1 to 0.2, which is smaller than our prescribed value (Boudreau and Ruddick, 1991; Boudreau et al., 2008; Koehler et al., 2012). However, most of these estimates are based on sedimentary materials which are already quite degraded. This may explain the low  $\nu$  values, which are characteristic of a large contribution of refractory compounds.

Furthermore, the temporal evolution of the total POC concentration can be expressed in a closed system as

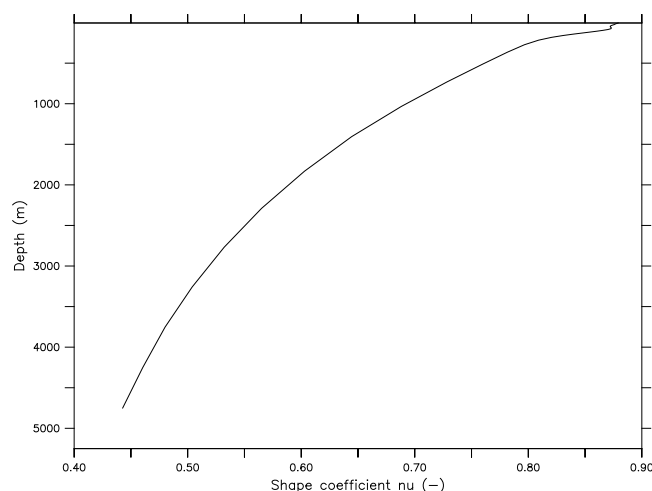
$$\text{POC}(t) = \text{POC}(0) \left( \frac{a}{a+t} \right)^\nu, \quad (10)$$

where  $\text{POC}(0)$  is the initial POC concentration. Assuming that POC is sinking with a constant sinking speed  $w$ , this equation can be rewritten as a function of depth:

$$\text{POC}(z) = \text{POC}(0) \left( \frac{aw}{aw+z} \right)^\nu. \quad (11)$$

For depth  $z$  much larger than  $aw$ , POC concentrations should vary vertically as  $z^{-\nu}$ , i.e. as an inverse power function of depth. From that analysis,  $\nu$  is thus equivalent to  $b$ , the exponent used in the popular relationship proposed by Martin et al. (1987). Based on the analysis of sediment traps deployed at nine stations located in the Pacific Ocean, Martin et al. (1987) found that  $b$  is on average equal to about 0.86, which is not very far from our prescribed value of 1. Such asymptotic behaviour of the RC formalism might appear as a limit. Indeed, several studies have shown that  $b$  can be quite variable and can range from about 0.4 to more than 1.5 (Henson et al., 2012a; Guidi et al., 2015). However, the analytical profile presented in Eq. (11) is valid only in a closed system with a homogeneous pool sinking at the same settling speed. In the ocean and in the model, POC is a mixture of materials sinking at different speeds and produced all along the water column. As a consequence,  $b$  is not predicted to be constant and can significantly differ in the model from the analytical value of 1, as we will show in the next section.

Observations based on sedimentary materials and those from sediment traps seem to produce contradicting results concerning the order of magnitude of the shape coefficient  $\nu$ , about 0.1 versus about 1. As a sensitivity experiment, we have run the RC model using a shape coefficient set to 0.16 as proposed by Middelburg (1989). The rate parameter  $a$  has been prescribed so that the predicted mean remineralisation rate in the top 50 m of the ocean is equivalent to that in the RC experiment. The resulting vertical distribution of POC exhibits too weak vertical gradients in the upper ocean, as well as excessive concentrations in the deep ocean (not shown). This suggests that the contribution of refractory compounds



**Figure 8.** Vertical profile of the annual mean shape coefficient  $\nu$  (–) of the lability distribution of total POC averaged over the global ocean.  $\nu$  has been computed from the results of the RC experiment. It is obtained as the square of the mean of the lability distribution divided by its variance.

in freshly produced organic matter is too high. The lower shape coefficients in the sediments may be explained by the continuous mixture between old materials coming from the surface and fresher organic matter supplied by the large particles and by the zooplankton activity in the water column. To test that hypothesis, we have computed from the RC model the vertical structure of the “apparent” shape coefficient corresponding to the lability distribution of total POC. If the lability distribution is assumed to follow a gamma distribution, then the shape coefficient is given by the square of the mean divided by the variance. Of course, because the system is not closed, the lability distribution of POC in the ocean does not necessarily remain a gamma distribution (see Sect. 2.2). That is why this coefficient is referred to the apparent shape coefficient. The model predicts that  $\nu$  decreases with depth from less than 0.9 in the upper ocean to about 0.45 at 4500 m (Fig. 8). At that depth, POC is a mixture of organic matter whose age ranges from 0 to about 6 years. Thus, our model supports the hypothesis that the relatively low values of the shape coefficient in the sediments can be produced by a heterogeneous age of the organic matter that is buried in the sediments.

The implementation of the RC model relies on the very strong assumption that advection and diffusion do not affect the lability distribution of POC (except for diffusion in the mixed layer). This assumption may appear legitimate for large POC because of its large settling speed. However, for small POC, it may introduce large errors in the model behaviour. To test the impact of that assumption, we performed a model experiment in which the lability classes of small POC are modelled as individual prognostic tracers. Large POC is represented using the simplified framework like in

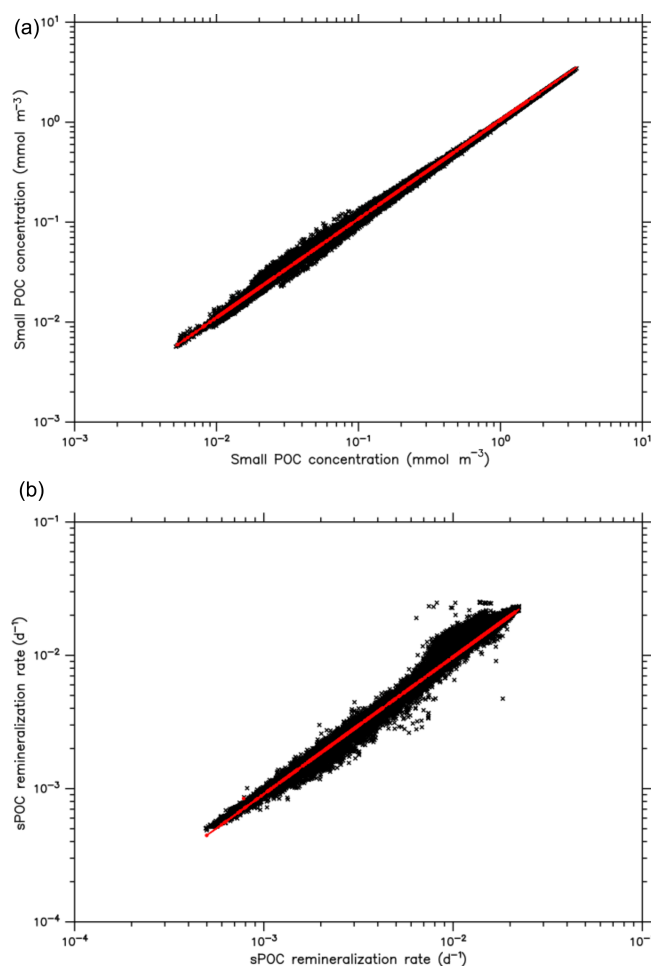
the experiment RC. Since this experiment is quite computationally intensive, we discretise the lability space using nine classes. This simulation has been run for 30 years and is compared to the equivalent simulation using the simplified lability parameterisation with the same nine lability classes.

Figure 9 shows the remineralisation rate and the POC concentrations computed using the nine prognostic POC classes versus the simplified lability model in log space. Both scatter plots displayed on Fig. 9 suggest that the assumption on which we based the implementation of the RC model does not introduce severe biases in the solution predicted by the model. Differences remain relatively modest, except in regions which experience deep vertical mixing such as in the North Atlantic Ocean and in the Southern Ocean. Furthermore, the borders of the upwelling regions also exhibit significant biases, especially in remineralisation rates. Nevertheless, biases remain much smaller than the differences in POC concentrations between the `noRC` and `RC` experiments.

#### 4.2 Spatial variations of remineralisation efficiency

Important spatial variations of the remineralisation efficiency in the mesopelagic domain have been evidenced using a combination of sediment trap data, underwater imaging systems, Th-derived fluxes and POC observations (e.g. Berelson, 2001; Lam et al., 2011; Guidi et al., 2015). These variations have been explained by differences in the community distribution and composition (Boyd et al., 1999; Guidi et al., 2015), in the zooplankton activity in the mesopelagic domain (Stemmann et al., 2004; Robinson et al., 2010), in temperature (Marsay et al., 2015), in oxygen (Devol and Hartnett, 2001), and in bacterial activity in response to changes in pressure (Tamburini et al., 2003). The remineralisation efficiency in the mesopelagic domain can be described by the remineralisation exponent  $b$  used in the power law function proposed by Martin et al. (1987). High values of  $b$  denote intense shallow remineralisation, whereas low values indicate efficient transfer to the deep ocean.

Several studies have attempted to estimate the regional distribution of  $b$  at the global scale based on the analysis of global collections of in situ data (Henson et al., 2012a; Guidi et al., 2015; Marsay et al., 2015). Considerable differences exist between these different estimates. In Henson et al. (2012a) and Guidi et al. (2015), high values of  $b$ , generally above 1, are found in the high latitudes and in eastern boundary upwelling systems whereas lower values, typically below 0.6, are estimated in the low latitudes, especially in the oligotrophic subtropical gyres. In Marsay et al. (2015), the spatial distribution of  $b$  is completely reversed with high values in the subtropical values and much lower values in the high latitudes. A potential explanation of these apparently contradicting results is the depth range of the data that have been used to estimate  $b$  (Marsay et al., 2015). However, Guidi et al. (2015) have used POC profiles observed with underwater video profilers which have a high vertical resolu-

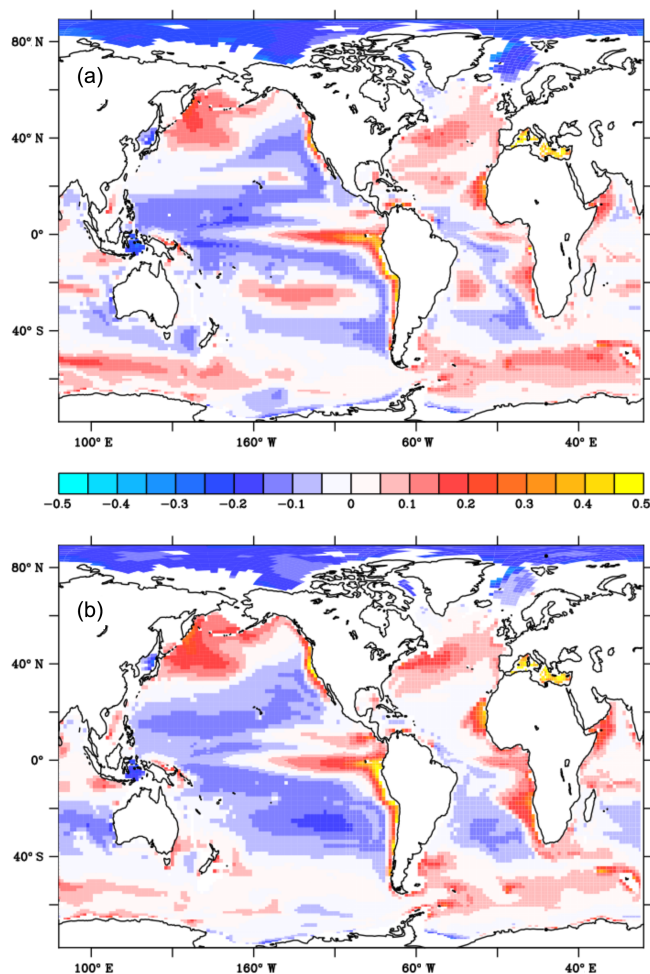


**Figure 9.** Scatter diagrams of the small POC concentration (in mmol m<sup>-3</sup>, top panel) and the remineralisation rate (in d<sup>-1</sup>, bottom panel). In both panels, the  $x$  axis corresponds to the results from a model experiment in which nine lability classes are explicitly modelled, whereas the results from the `RC` experiment are shown on the  $y$  axis. The red line on both panels shows a linear regression. In the top panel, the slope is 0.99 and the  $r^2$  is 0.99. In the bottom panel, the slope is 1.03 and the  $r^2$  is 0.98.

tion and are restricted to the top 1000 m, similar to the vertical range analysed in Marsay et al. (2015). Another possible explanation for this disagreement may stem from the use of <sup>234</sup>Th-corrected carbon fluxes in Henson et al. (2012a) and in Guidi et al. (2015). They have been suggested to be significantly underestimated at shallow depth due to analytical problems, at least in the low latitudes (Quay, 1997). As a consequence, estimates of  $b$  based on these observations would be too low (Weber et al., 2016).

We have shown that the varying lability of the organic matter strongly changes the distribution of POC both in the mesopelagic zone and in the deep ocean. As a consequence, the remineralisation efficiency below the euphotic zone should be significantly impacted when accounting for





**Figure 10.** Spatial variations of the annual mean anomalies of the remineralisation coefficient  $b$  from the global median value: (a) from the noRC experiment and (b) from the RC experiment. The global median values of  $b$  are 0.87 and 0.7 in the noRC experiment and in the RC experiment respectively.  $b$  has been determined by fitting a power law function to the modelled vertical profiles of total particulate carbon between the bottom of the photic zone and 1000 m.

a variable reactivity of POC. Figure 10 displays the anomalies of  $b$  relative to the median value of that coefficient, both in the noRC and in the RC experiments. The  $b$  coefficient is used here as a diagnostic of the transfer efficiency of POC in the mesopelagic domain. In fact, a close inspection of the vertical profiles of the simulated fluxes of POC shows that they can diverge significantly from a power law distribution, especially in the high latitudes and in very productive areas (see Fig. S2 in the Supplement).

The first major difference between the two experiments is the median  $b$  value. In the noRC experiment it is equal to 0.87, very close to the estimate proposed by Martin et al. (1987), whereas it is lower, around 0.7, in the RC experiment. A lower coefficient in the latter experiment

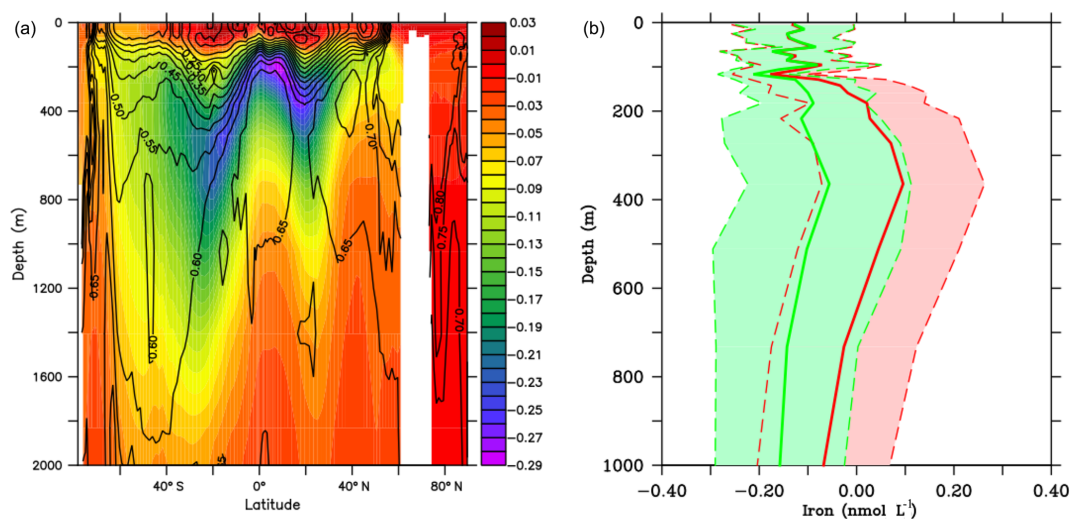
is not surprising as we showed that accounting for a variable lability leads to a better preservation of POC, especially of small particles, in the mesopelagic and deep domains. This median value of  $b$ , despite being lower, remains higher than in previous recent estimates proposed by Henson et al. (2012a) and Guidi et al. (2015): 0.54 and 0.64, respectively. The mean predicted  $b$  coefficients are lower than the median values: 0.76 and 0.61 in the noRC and RC experiment respectively. The predicted mean value in the RC experiment is close to the recent data-based estimates of 0.64 (Henson et al., 2012a; Guidi et al., 2015).

The spatial variations of  $b$  predicted in both experiments are relatively similar. High values are simulated in the equatorial and eastern boundary upwelling systems and in the mid latitudes, where annual mean productivity is maximum. In contrast, the less productive areas of the low latitudes and the Arctic Ocean are characterised by relatively low values of  $b$ . Our simulated distributions of  $b$  do not compare very favourably with previous estimates (Henson et al., 2012a; Guidi et al., 2015; Marsay et al., 2015), despite some qualitative common features may be found with the first two quoted studies. However, as stated above, considerable disagreements exist between these estimates, which makes the assessment of our different model configurations quite challenging.

The largest difference between the two experiments is simulated in the central part of the subtropical oligotrophic areas. The noRC experiment predicts high values of  $b$  whereas the RC experiment predicts  $b$  to be lower than the median value. Thus, accounting for a variable lability locally increases the efficiency of the transfer of carbon through the mesopelagic domain in these regions. The combination of a high temperature in the upper ocean and a thick productive zone (typically 200 m) drives an efficient and rapid remineralisation of the labile fraction of organic matter near the surface, leaving the more refractory compounds for export to the interior of the ocean.

Except for the central subtropical gyres, both simulations exhibit similar spatial patterns. This suggests that a variable lability of the organic matter does not significantly change the spatial variations of the efficiency of remineralisation in the mesopelagic domain over most of the ocean. The spatial variability in our model is driven by other mechanisms. Zooplankton activity in the interior of the ocean plays a major role and explains the simulated high  $b$  values in productive areas of the ocean (see Fig. S3 in the Supplement). Intense export out of the upper ocean sustains a high zooplankton biomass in the upper mesopelagic domain, which very efficiently removes large and fast-sinking particles as suggested in previous studies (Stemmann et al., 2004; Iversen and Ploug, 2010; Jackson and Checkley Jr., 2011). Other factors such as temperature and the particle composition (the relative abundance of small and large particles) play a more modest role. For instance, low  $b$  coefficients in the Arctic Ocean are explained by a very low temperature and, as stated





**Figure 11.** Iron distribution ( $\text{nmol Fe L}^{-1}$ ) in the Pacific Ocean. The left panel shows the zonal average of the difference between the RC and the noRC experiments. The isolines display the zonally averaged iron distribution as simulated in the noRC experiment. The right panel shows the vertical profiles of the difference between the simulated iron distributions (red solid line: the noRC experiment; green solid line: the RC experiment) and observed iron from Tagliabue et al. (2012). Differences have been averaged over the Pacific Ocean. The light shaded areas display the standard deviation of the differences (red: the noRC experiment; green: the RC experiment).

above, the interplay between temperature and the variable lability of POC produces the differences between our two experiments in the subtropical gyres.

However, this finding relies on the assumption that the lability distribution of the freshly produced organic matter is spatially and temporally uniform. A different assumption would obviously change this finding. In particular, this distribution may depend on the structure of the ecosystem in the euphotic zone. Biochemical analysis of the surface particulate organic matter has shown that its composition varies both in time and space as a result of differences in the phytoplankton and zooplankton species and interactions (Tegelaar et al., 1989; Kiriakoulakis et al., 2001; Lee et al., 2004; Mayzaud et al., 2014). Thus, the lability distribution of POM is unlikely to be constant both in time and space. For instance, diatom-dominated ecosystems in the high latitudes are characterised by strong seasonal blooms, exporting efficiently organic matter out of the euphotic zone. However, the transfer of this organic matter through the mesopelagic domain is quite inefficient, with only a small fraction of POM reaching the deep ocean (Lam et al., 2011; Mayor et al., 2012). Building on the distribution of Chl among phytoplankton size classes developed by Uitz et al. (2008), Guidi et al. (2015) have also shown that the composition of the phytoplankton ecosystem partly controls the remineralisation efficiency below the euphotic zone. A potential explanation for this low transfer efficiency in the mesopelagic domain in diatom-dominated ecosystems is the large contribution of labile organic matter. This would translate in our RC formalism to a high value (above 1) of the shape coefficient  $\nu$  (Arndt et al., 2013). Unfortunately, more data are needed to derive

any general relationship or trend that would be applicable in a global model such as PISCES.

#### 4.3 Impact of the lability of POC on the tracers distributions

A major effect of our variable lability parameterisation is the decrease of the efficiency of remineralisation in the mesopelagic domain, especially for the small particles. Indeed, the transfer of organic matter to the deep ocean is strongly enhanced (see Table 4). As a consequence, the RC experiment should predict an enhanced sequestration of both carbon and nutrients in the lower part of the mesopelagic domain and in the deep ocean at the expense of the upper ocean and the upper mesopelagic domain. This results in a strong decrease by about 20 % in primary productivity (Table 4) which is more strongly limited by both micro- and macronutrients. The impact of the enhanced sequestration on the nutrient distributions (nitrate, phosphate, and silicate) remains generally modest (not shown). For instance, nitrate concentrations are decreased by on average 0.4 and at most  $2.5 \mu\text{mol L}^{-1}$  in the upper 200 m. In the deep ocean, they are increased by on average about 0.08 and a maximum of  $2 \mu\text{mol L}^{-1}$ . The impact on the  $\text{O}_2$  distribution is larger, especially in the deep ocean where the enhanced export of organic matter drives a more intense consumption. In the deep Pacific and Indian oceans,  $\text{O}_2$  concentrations are decreased by on average  $23 \mu\text{mol L}^{-1}$ . Over the global ocean, the RMSE between the two experiments is equal to 0.85 and  $17 \mu\text{mol L}^{-1}$  for nitrate and  $\text{O}_2$  respectively.

The largest impact of the RC formalism is predicted on the iron distribution. Figure 11 shows the consequences of this formalism on the zonally averaged distribution of iron in the Pacific Ocean. The most striking feature is the strong decrease in dissolved Fe in the mesopelagic zone. The depth of the maximum anomaly is variable and is roughly located close to the isoline denoting an iron concentration of  $0.55 \text{ nmol Fe L}^{-1}$ . Two mechanisms explain this subsurface decrease in iron. First, a less efficient remineralisation of biogenic iron in the mesopelagic zone decreases the release of dissolved iron. Second, the much larger POC concentrations in this zone drives a more intense scavenging of dissolved iron. This explains the depth of the maximum anomaly: the concentration of ligands in PISCES is set to  $0.6 \text{ nmol Fe L}^{-1}$  everywhere (Aumont et al., 2015). Iron is strongly complexed by these ligands and thus escapes scavenging by particles (Liu and Millero, 2002; Gledhill and Buck, 2012). When the dissolved Fe concentration is getting close to the ligands concentration, the non-complexed free dissolved iron concentration increases rapidly just as scavenging does.

Figure 11 also displays a comparison between the simulated iron profiles of both experiments and a compilation of iron observations (Tagliabue et al., 2012). The analysis is restricted to the Pacific Ocean but similar results are obtained in the other ocean basins. In both experiments, iron concentrations appear to be underestimated ( $\text{nmol Fe L}^{-1}$ ) relative to the observations, especially in the RC experiment. The vertical increase in iron appears to be too steep in the nORC experiment between 100 and 400 m. As a consequence of the lower iron concentrations in the subsurface (see left panel of Fig. 11), the vertical increase in iron in the RC experiment is weaker and is more similar to the observations. However, the iron concentrations are quite significantly underestimated in that experiment, by about  $0.15 \text{ nmol Fe L}^{-1}$ . This suggests that loss due to scavenging by particles is too intense. Such deficiency is not really surprising since the scavenging rate in the standard model has been adjusted with POC concentrations that are strongly underestimated (see Sect. 3.1). Consequently, this rate has been given a high value which has not been changed in the RC experiment despite much higher POC concentrations.

## 5 Conclusions

The lability of the marine organic matter has been extensively studied in the sediments (e.g. Middelburg, 1989; Boudreau and Ruddick, 1991; Arndt et al., 2013) and in the ocean for the dissolved component (e.g. Amon and Benner, 1994; Hansell, 2013; Benner and Amon, 2015). The reactivity of POC in the ocean has received much less attention and has been mainly investigated through its interactions with lithogenic and biogenic inorganic particles, i.e. the ballast hypothesis (e.g. Armstrong et al., 2001; Klaas and Archer, 2002; Iversen and Ploug, 2010). In this

paper, we hypothesise that POC is composed of a mixture of compounds with varying lability. We propose applying the reactivity continuum model proposed by Boudreau and Ruddick (1991) to study the impact a variable lability might have on the POC distribution in the ocean and on the marine biogeochemical cycles. We describe an efficient parameterisation that has been embedded in the PISCES biogeochemical model (Aumont et al., 2015) and that is analysed at the global scale using a coarse-resolution global configuration of NEMO.

A variable reactivity of POC leads to a large increase in concentrations in the mesopelagic domain and in the deep ocean, where concentrations are larger by about 1 to 2 orders of magnitude. This increase is explained mainly by a better preservation of small particles that sink slowly to the bottom of the ocean. The simulated vertical profiles of POC and the relative contribution of small particles to total POC are in much better agreement with the observations. Despite this large impact, the consequences on the nutrients distribution and on the export production of carbon out of the euphotic zone remain relatively small. Nevertheless, iron vertical gradients in the upper ocean are significantly reduced as a result of a stronger loss due to scavenging. Furthermore, the sequestration of carbon in the deep ocean is increased by about 55 % relative to a model with a constant and uniform lability.

Previous modelling studies have shown that biogeochemical models simulate POC distributions that exhibit significant deficiencies which compromise their value when studying trace elements (Dutay et al., 2009, 2015). Here, we show that lability of POC may represent an explanation to these deficiencies. However, large uncertainties remain. In particular, we have used a gamma function to describe the lability distribution in POC as well as uniform and constant shape and reaction coefficients in that gamma function. Unfortunately, observations and experiments are currently insufficient to better constrain these uncertainties. We thus strongly advocate for more dedicated studies to better characterise the nature and the lability of POC, as well as its long-term evolution when this organic matter ages in the water column.

**Code availability.** The source code of the NEMO model, including PISCES-v2, can be found at <http://www.nemo-ocean.eu/>. The official version with the lability parameterisation is available as a svn development branch called `dev_r6270_PISCES_QUOTA`. To access the NEMO svn repository, users should register on the NEMO website at the following address: <http://www.nemo-ocean.eu/user/register>. Note that many additional modifications of the standard version of PISCES-v2 are also available in that version of PISCES.

**The Supplement related to this article is available online at doi:10.5194/bg-14-2321-2017-supplement.**

**Competing interests.** The authors declare that they have no conflict of interest.

**Acknowledgements.** The help received from the Ferret community and especially Ryo Furue, Patrick Brockman, Ansley Manke, and Sarah Tavernel concerning visualisation and related technicalities is strongly appreciated. This work benefited from fruitful discussions with Laurent Bopp, Laurent Mémery, and Alessandro Tagliabue. The funding of this work was through the European Project H2020 CRESCENDO. It was also funded by a Swedish Research Council grant (349-2012-6287) within the framework of the French–Swedish cooperation in the Common Research Training Program in the Climate, Environment and Energy Agreement between VR, Formas, and LSCE, for the project “Particle transport derived from isotope tracers and its impact on ocean biogeochemistry: a GEOTRACES project”.

Edited by: A. Winguth

Reviewed by: J. Dunne and one anonymous referee

## References

- Allen, J. I., Somerfield, P. J., and Gilbert, F. J.: Quantifying uncertainty in high-resolution coupled hydrodynamic-ecosystem models, *J. Marine Syst.*, 64, 3–14, 2007.
- Amon, R. M. W. and Benner, R.: Rapid cycling of high-molecular-weight dissolved organic matter in the ocean, *Nature*, 369, 549–552, doi:10.1038/369549a0, 1994.
- Amon, R. M. W. and Benner, R.: Bacterial utilization of different size classes of dissolved organic matter, *Limnol. Oceanogr.*, 41, 41–51, 1996.
- Archer, D. E., Morford, J. L., and Emerson, S. R.: A model of suboxic sedimentary diagenesis suitable for automatic tuning and gridded global domains, *Global Biogeochem. Cy.*, 16, 17–1, doi:10.1029/2000GB001288, 2002.
- Aris, R. and Gavalas, G. R.: On the Theory of Reactions in Continuous Mixtures, *Philos. T. R. Soc. Lond. A*, 260, 351–393, doi:10.1098/rsta.1966.0054, 1966.
- Armstrong, R., Lee, C., Hedges, J., Honjo, S., and Wakeham, S.: A new, mechanistic model for organic carbon fluxes in the ocean based on the quantitative association of POC with ballast minerals, *Deep-Sea Res. Pt. II*, 49, 219–236, doi:10.1016/S0967-0645(01)00101-1, 2001.
- Arndt, S., Jørgensen, B., LaRowe, D., Middelburg, J., Pancost, R., and Regnier, P.: Quantifying the degradation of organic matter in marine sediments: A review and synthesis, *Earth-Sci. Rev.*, 123, 53–86, doi:10.1016/j.earscirev.2013.02.008, 2013.
- Arsouze, T., Dutay, J.-C., Lacan, F., and Jeandel, C.: Reconstructing the Nd oceanic cycle using a coupled dynamical – biogeochemical model, *Biogeosciences*, 6, 2829–2846, doi:10.5194/bg-6-2829-2009, 2009.
- Aumont, O., Ethé, C., Tagliabue, A., Bopp, L., and Gehlen, M.: PISCES-v2: an ocean biogeochemical model for carbon and ecosystem studies, *Geosci. Model Dev.*, 8, 2465–2513, doi:10.5194/gmd-8-2465-2015, 2015.
- Barnier, B., Madec, G., Penduff, T., Molines, J.-M., Tréguier, A.-M., Sommer, J. L., Beckmann, A., Biastoch, A., Böning, C., Dengg, J., Derval, C., Durand, E., Gulev, S., Remy, E., Talandier, C., Theetten, S., Maltrud, M., McClean, J., and Cuevas, B. D.: Impact of partial steps and momentum advection schemes in a global ocean circulation model at eddy-permitting resolution, *Ocean Dynam.*, 56, 543–567, doi:10.1007/s10236-006-0082-1, 2006.
- Benner, R. and Amon, R. M.: The Size-Reactivity Continuum of Major Bioelements in the Ocean, *Annu. Rev. Mar. Sci.*, 7, 185–205, doi:10.1146/annurev-marine-010213-135126, 2015.
- Berelson, W. M.: The flux of particulate organic carbon into the ocean interior: A comparison of four US JGOFS regional studies, *Oceanography*, 14, 59–67, 2001.
- Bopp, L., Resplandy, L., Orr, J. C., Doney, S. C., Dunne, J. P., Gehlen, M., Halloran, P., Heinze, C., Ilyina, T., Séférian, R., Tjiputra, J., and Vichi, M.: Multiple stressors of ocean ecosystems in the 21st century: projections with CMIP5 models, *Biogeosciences*, 10, 6225–6245, doi:10.5194/bg-10-6225-2013, 2013.
- Bosatta, E. and Ågren, G. I.: Theoretical Analysis of Carbon and Nutrient Interactions in Soils under Energy-Limited Conditions, *Soil Sci. Soc. Am. J.*, 55, 728, doi:10.2136/sssaj1991.03615995005500030015x, 1991.
- Bosatta, E. and Ågren, G. I.: The power and reactive continuum models as particular cases of the  $q$ -theory of organic matter dynamics, *Geochim. Cosmochim. Ac.*, 59, 3833–3835, doi:10.1016/0016-7037(95)00287-A, 1995.
- Boudreau, B. P. and Ruddick, B. R.: On a reactive continuum representation of organic matter diagenesis, *Am. J. Sci.*, 291, 507–538, doi:10.2475/ajs.291.5.507, 1991.
- Boudreau, B. P., Arnosti, C., Jørgensen, B. B., and Canfield, D. E.: Comment on “Physical Model for the Decay and Preservation of Marine Organic Carbon”, *Science*, 319, 1616, doi:10.1126/science.1148589, 2008.
- Boyd, P., Sherry, N., Berges, J., Bishop, J., Calvert, S., Charette, M., Giovannoni, S., Goldblatt, R., Harrison, P., Moran, S., Roy, S., Soon, M., Strom, S., Thibault, D., Vergin, K., Whitney, F., and Wong, C.: Transformations of biogenic particulates from the pelagic to the deep ocean realm, *Deep-Sea Res. Pt. II*, 46, 2761–2792, doi:10.1016/S0967-0645(99)00083-1, 1999.
- Boyd, P. W. and Trull, T. W.: Understanding the Export of Biogenic Particles in Oceanic Waters: Is There Consensus?, *Prog. Oceanogr.*, 72, 276–312, doi:10.1016/j.pocean.2006.10.007, 2007.
- Burnham, A. K. and Braun, R. L.: Global Kinetic Analysis of Complex Materials, *Energ. Fuel.*, 13, 1–22, doi:10.1021/ef9800765, 1999.
- Carr, M.-E., Friedrichs, M. A., Schmeltz, M., Aita, M. N., Antoine, D., Arrigo, K. R., Asanuma, I., Aumont, O., Barber, R., Behrenfeld, M., Bidigare, R., Buitenhuis, E. T., Campbell, J., Ciotti, A., Dierssen, H., Dowell, M., Dunne, J., Esaias, W., Gentili, B., Gregg, W., Groom, S., Hoepffner, N., Ishizaka, J., Kameda, T., Quéré, C. L., Lohrenz, S., Marra, J., Mélin, F., Moore, K., Morel, A., Reddy, T. E., Ryan, J., Scardi, M., Smyth, T., Turpie, K., Tilstone, G., Waters, K., and Yamanaka, Y.: A comparison of global estimates of marine primary production from ocean color, *Deep-Sea Res. Pt. II*, 53, 741–770, doi:10.1016/j.dsr2.2006.01.028, 2006.
- Collins, W. J., Bellouin, N., Doutriaux-Boucher, M., Gedney, N., Halloran, P., Hinton, T., Hughes, J., Jones, C. D., Joshi, M., Lid-

- dicoat, S., Martin, G., O'Connor, F., Rae, J., Senior, C., Sitch, S., Totterdell, I., Wiltshire, A., and Woodward, S.: Development and evaluation of an Earth-System model – HadGEM2, *Geosci. Model Dev.*, 4, 1051–1075, doi:10.5194/gmd-4-1051-2011, 2011.
- Dale, A. W., Nickelsen, L., Scholz, F., Hensen, C., Oschlies, A., and Wallmann, K.: A revised global estimate of dissolved iron fluxes from marine sediments, *Global Biogeochem. Cy.*, 29, 691–707, doi:10.1002/2014GB005017, 2015.
- Del Giorgio, P. A. and Davis, J.: Patterns in dissolved organic matter lability and consumption across aquatic ecosystems, *Aquatic ecosystems: interactivity of dissolved organic matter*. Academic Press, San Diego, CA, 399–424, 2002.
- Devol, A. H. and Hartnett, H. E.: Role of the oxygen-deficient zone in transfer of organic carbon to the deep ocean, *Limnol. Oceanogr.*, 46, 1684–1690, 2001.
- DeVries, T., Liang, J.-H., and Deutsch, C.: A mechanistic particle flux model applied to the oceanic phosphorus cycle, *Biogeosciences*, 11, 5381–5398, doi:10.5194/bg-11-5381-2014, 2014.
- Diaz, J., Ingall, E., Benitez-Nelson, C., Paterson, D., de Jonge, M. D., McNulty, L., and Brandes, J. A.: Marine Polyphosphate: A Key Player in Geologic Phosphorus Sequestration, *Science*, 320, 652–655, doi:10.1126/science.1151751, 2008.
- Druffel, E., Williams, P., Bauer, J., and Ertel, J.: Cycling of dissolved and particulate organic matter in the open ocean, *J. Geophys. Res.*, 97, 15639–15659, doi:10.1029/92JC01511, 1992.
- Druffel, E. R. M. and Williams, P. M.: Identification of a deep marine source of particulate organic carbon using bomb  $^{14}\text{C}$ , *Nature*, 347, 172–174, doi:10.1038/347172a0, 1990.
- Dunne, J. P., Armstrong, R. A., Gnanadesikan, A., and Sarmiento, J. L.: Empirical and mechanistic models for the particle export ratio, *Global Biogeochem. Cy.*, 19, GB4026, doi:10.1029/2004GB002390, 2005.
- Dunne, J. P., Sarmiento, J. L., and Gnanadesikan, A.: A synthesis of global particle export from the surface ocean and cycling through the ocean interior and on the seafloor, *Global Biogeochem. Cy.*, 21, GB4006, doi:10.1029/2006GB002907, gB4006, 2007.
- Dunne, J. P., John, J. G., Shevliakova, E., Stouffer, R. J., Krasting, J. P., Malyshev, S. L., Milly, P. C. D., Sentman, L. T., Adcroft, A. J., Cooke, W., Dunne, K. A., Griffies, S. M., Hallberg, R. W., Harrison, M. J., Levy, H., Wittenberg, A. T., Phillips, P. J., and Zadeh, N.: GFDL's ESM2 Global Coupled Climate–Carbon Earth System Models. Part II: Carbon System Formulation and Baseline Simulation Characteristics, *J. Climate*, 26, 2247–2267, doi:10.1175/JCLI-D-12-00150.1, 2012.
- Durkin, C. A., Estapa, M. L., and Buesseler, K. O.: Observations of carbon export by small sinking particles in the upper mesopelagic, *Mar. Chem.*, 175, 72–81, doi:10.1016/j.marchem.2015.02.011, 2015.
- Dutay, J., Lacan, F., Roy-Barman, M., and Bopp, L.: Influence of particle size and type on  $^{231}\text{Pa}$  and  $^{230}\text{Th}$  simulation with a global coupled biogeochemical-ocean general circulation model: A first approach, *Geochem. Geophys. Geosy.*, 10, Q01011, doi:10.1029/2008GC002291, 2009.
- Dutay, J.-C., Tagliabue, A., Kriest, I., and Van Hulten, M. M. P.: Modelling the role of marine particle on large scale  $^{231}\text{Pa}$ ,  $^{230}\text{Th}$ , Iron and Aluminium distributions, *Prog. Oceanogr.*, 133, 66–72, doi:10.1016/j.pocean.2015.01.010, 2015.
- Falkowski, P. G., Barber, R. T., and Smetacek, V.: Biogeochemical Controls and Feedbacks on Ocean Primary Production, *Science*, 281, 200–206, doi:10.1126/science.281.5374.200, 1998.
- Francois, R., Honjo, S., Krishfield, R., and Manganini, S.: Factors controlling the flux of organic carbon to the bathypelagic zone of the ocean, *Global Biogeochem. Cy.*, 16, 1087, doi:10.1029/2001GB001722, 2002.
- Gaspar, P., Gregoris, Y., and Lefevre, J. M.: A simple eddy kinetic energy model for simulations of the ocean vertical mixing: Tests at station Papa and Long-Term Upper Ocean Study Site site, *J. Geophys. Res.*, 95, 16179–16193, 1990.
- Gehlen, M., Bopp, L., Emprin, N., Aumont, O., Heinze, C., and Ragueneau, O.: Reconciling surface ocean productivity, export fluxes and sediment composition in a global biogeochemical ocean model, *Biogeosciences*, 3, 521–537, doi:10.5194/bg-3-521-2006, 2006.
- Gehlen, M., Gangstø, R., Schneider, B., Bopp, L., Aumont, O., and Etche, C.: The fate of pelagic  $\text{CaCO}_3$  production in a high  $\text{CO}_2$  ocean: a model study, *Biogeosciences*, 4, 505–519, doi:10.5194/bg-4-505-2007, 2007.
- Gent, P. and McWilliams, J.: Isopycnal mixing in ocean circulation models, *J. Phys. Oceanogr.*, 20, 150–155, doi:10.1175/1520-0485(1990)020<0150:IMOCM>2.0.CO;2, 1990.
- Gledhill, M. and Buck, K. N.: The Organic Complexation of Iron in the Marine Environment: A Review, *Front. Microbiol.*, 3, 69, doi:10.3389/fmicb.2012.00069, 2012.
- Grossart, H.-P. and Gust, G.: Hydrostatic pressure affects physiology and community structure of marine bacteria during settling to 4000 m: an experimental approach, *Mar. Ecol.-Prog. Ser.*, 390, 97–104, 2009.
- Guidi, L., Legendre, L., Reygondeau, G., Uitz, J., Stemmann, L., and Henson, S. A.: A new look at ocean carbon remineralization for estimating deepwater sequestration, *Global Biogeochem. Cy.*, 29, 1044–1059, doi:10.1002/2014GB005063, 2015.
- Hansell, D. A.: Recalcitrant Dissolved Organic Carbon Fractions, *Annu. Rev. Mar. Sci.*, 5, 421–445, doi:10.1146/annurev-marine-120710-100757, 2013.
- Hauck, J., Völker, C., Wang, T., Hoppema, M., Losch, M., and Wolf-Gladrow, D. A.: Seasonally different carbon flux changes in the Southern Ocean in response to the southern annular mode, *Global Biogeochem. Cy.*, 27, 1236–1245, doi:10.1002/2013GB004600, 2013.
- Hayes, C. T., Anderson, R. F., Fleisher, M. Q., Huang, K.-F., Robinson, L. F., Lu, Y., Cheng, H., Edwards, R. L., and Moran, S. B.:  $^{230}\text{Th}$  and  $^{231}\text{Pa}$  on GEOTRACES GA03, the US GEOTRACES North Atlantic transect, and implications for modern and paleoceanographic chemical fluxes, *Deep-Sea Res. Pt. II*, 116, 29–41, doi:10.1016/j.dsr2.2014.07.007, 2015.
- Henson, S. A., Sanders, R., Madsen, E., Morris, P. J., Le Moigne, F., and Quartly, G. D.: A reduced estimate of the strength of the ocean's biological carbon pump, *Geophys. Res. Lett.*, 38, 104606, doi:10.1029/2011GL046735, 2011.
- Henson, S. A., Sanders, R., and Madsen, E.: Global patterns in efficiency of particulate organic carbon export and transfer to the deep ocean, *Global Biogeochem. Cy.*, 26, GB1028, doi:10.1029/2011GB004099, 2012a.
- Henson, S. A., Sanders, R., and Madsen, E.: Global patterns in efficiency of particulate organic carbon export and trans-

- fer to the deep ocean, *Global Biogeochem. Cy.*, 26, GB1028, doi:10.1029/2011GB004099, 2012b.
- Ilyina, T., Six, K. D., Segsneider, J., Maier-Reimer, E., Li, H., and Núñez-Riboni, I.: Global ocean biogeochemistry model HAMOCC: Model architecture and performance as component of the MPI-Earth system model in different CMIP5 experimental realizations, *Journal of Advances in Modeling Earth Systems*, 5, 287–315, doi:10.1029/2012MS000178, 2013.
- Iversen, M. H. and Ploug, H.: Ballast minerals and the sinking carbon flux in the ocean: carbon-specific respiration rates and sinking velocity of marine snow aggregates, *Biogeosciences*, 7, 2613–2624, doi:10.5194/bg-7-2613-2010, 2010.
- Jackson, G. A. and Checkley Jr., D. M.: Particle size distributions in the upper 100 m water column and their implications for animal feeding in the plankton, *Deep-Sea Res. Pt. I*, 58, 283–297, doi:10.1016/j.dsr.2010.12.008, 2011.
- Jahnke, R. A.: The global ocean flux of particulate organic carbon: Areal distribution and magnitude, *Global Biogeochem. Cy.*, 10, 71–88, doi:10.1029/95GB03525, 1996.
- Jokulsdottir, T. and Archer, D.: A stochastic, Lagrangian model of sinking biogenic aggregates in the ocean (SLAMS 1.0): model formulation, validation and sensitivity, *Geosci. Model Dev.*, 9, 1455–1476, doi:10.5194/gmd-9-1455-2016, 2016.
- Kiriakoulakis, K., Stutt, E., Rowland, S. J., Vangriesheim, A., Lampitt, R. S., and Wolff, G. A.: Controls on the organic chemical composition of settling particles in the Northeast Atlantic Ocean, *Prog. Oceanogr.*, 50, 65–87, doi:10.1016/S0079-6611(01)00048-9, 2001.
- Klaas, C. and Archer, D.: Association of sinking organic matter with various types of mineral ballast in the deep sea: Implications for the rain ratio, *Global Biogeochem. Cy.*, 16, 1116, doi:10.1029/2001GB001765, 2002.
- Koehler, B., Wachenfeldt, E., Kothawala, D., and Tranvik, L. J.: Reactivity continuum of dissolved organic carbon decomposition in lake water, *J. Geophys. Res.-Biogeo.*, 117, G01024, doi:10.1029/2011JG001793, 2012.
- Kwon, E. Y., Primeau, F., and Sarmiento, J. L.: The impact of remineralization depth on the air-sea carbon balance, *Nat. Geosci.*, 2, 630–635, doi:10.1038/NGEO612, 2009.
- Lam, P. J., Doney, S. C., and Bishop, J. K. B.: The dynamic ocean biological pump, *Global Biogeochem. Cy.*, 25, GB3009, doi:10.1029/2010GB003868, 2011.
- Lam, P. J., Ohnemus, D. C., and Auro, M. E.: Size-fractionated major particle composition and concentrations from the US GEO-TRACES North Atlantic Zonal Transect, *Deep-Sea Res. Pt. II*, 116, 303–320, doi:10.1016/j.dsr2.2014.11.020, 2015a.
- Lam, P. J., Ohnemus, D. C., and Auro, M. E.: Size-fractionated major particle composition and concentrations from the US GEO-TRACES north Atlantic zonal transect, *Deep-Sea Res. Pt. II*, 116, 303–320, doi:10.1016/j.dsr2.2014.11.020, 2015b.
- Lamborg, C., Buesseler, K., Valdes, J., Bertrand, C., Bidigare, R., Manganini, S., Pike, S., Steinberg, D., Trull, T., and Wilson, S.: The flux of bio- and lithogenic material associated with sinking particles in the mesopelagic “twilight zone” of the northwest and North Central Pacific Ocean, *Deep-Sea Res. Pt. II*, 55, 1540–1563, doi:10.1016/j.dsr2.2008.04.011, 2008.
- Laws, E. A., Falkowski, P. G., Smith, W. O., Ducklow, H., and McCarthy, J. J.: Temperature effects on export production in the open ocean, *Global Biogeochem. Cy.*, 14, 1231–1246, doi:10.1029/1999GB001229, 2000.
- Le Moigne, F. A.: Global database of surface ocean particulate organic carbon export fluxes diagnosed from the  $^{234}\text{Th}$  technique, doi:10.1594/PANGAEA.809717, 2013.
- Lee, C., Wakeham, S., and Arnosti, C.: Particulate Organic Matter in the Sea: The Composition Conundrum, *AMBIO*, 33, 565–575, doi:10.1579/0044-7447-33.8.565, 2004.
- Lee, C., Peterson, M. L., Wakeman, S. G., Armstrong, R. A., Cochran, J. K., Miquel, J. M., Fowler, S. W., Hirschberg, D., Beck, A., and Xue, J.: Particulate organic matter and ballast fluxes measured using time-series and settling velocity sediment traps in the northwestern Mediterranean Sea, *Deep-Sea Res. Pt. II*, 56, 1420–1436, 2009.
- Leggett, R. W. and Williams, L. R.: A reliability index for models, *Ecol. Model.*, 13, 303–312, doi:10.1016/0304-3800(81)90034-X, 1981.
- Lengaigne, M., Madec, G., Menkes, C., and Alory, G.: Effect of isopycnal diffusion in the tropical Pacific Ocean, *J. Geophys. Res.*, 108, 3345, doi:10.1029/2002JC001704, 2003.
- Liu, X. and Millero, F. J.: The solubility of iron in seawater, *Mar. Chem.*, 77, 43–54, doi:10.1016/S0304-4203(01)00074-3, 2002.
- Lutz, M., Dunbar, R., and Caldeira, K.: Regional Variability in the Vertical Flux of Particulate Organic Carbon in the Ocean Interior, *Global Biogeochem. Cy.*, 16, 11–1, doi:10.1029/2000GB001383, 2002.
- Lutz, M. J., Caldeira, K., Dunbar, R. B., and Behrenfeld, M. J.: Seasonal rhythms of net primary production and particulate organic carbon flux to depth describe the efficiency of biological pump in the global ocean, *J. Geophys. Res.-Oceans*, 112, 10011, doi:10.1029/2006JC003706, 2007.
- MacLeod, A.: Algorithm AS 245, A Robust and Reliable Algorithm for the Logarithm of the Gamma Function, *Appl. Stat.*, 38, 397–402, 1989.
- Madec, G.: NEMO ocean engine, Note du Pole de Modélisation, Institut Pierre-Simon Laplace, Paris, France, 2008.
- Marquardt, M., Hensen, C., Piñero, E., Wallmann, K., and Haeckel, M.: A transfer function for the prediction of gas hydrate inventories in marine sediments, *Biogeosciences*, 7, 2925–2941, doi:10.5194/bg-7-2925-2010, 2010.
- Marsay, C. M., Sanders, R. J., Henson, S. A., Pabortsava, K., Achterberg, E. P., and Lampitt, R. S.: Attenuation of sinking particulate organic carbon flux through the mesopelagic ocean, *P. Natl. Acad. Sci. USA*, 112, 1089–1094, doi:10.1073/pnas.1415311112, 2015.
- Martin, J. H., Knauer, G. A., Karl, D. M., and Broenkow, W. W.: VERTEX: carbon cycling in the northeast Pacific, *Deep-Sea Res. Pt. I*, 34, 267–285, doi:10.1016/0198-0149(87)90086-0, 1987.
- Matsumoto, K.: Biology-mediated temperature control on atmospheric  $p\text{CO}_2$  and ocean biogeochemistry, *Geophys. Res. Lett.*, 34, L20605, doi:10.1029/2007GL031301, 2007.
- Mawji, E., Schlitzer, R., Dodas, E. M., Abadie, C., Abouchami, W., Anderson, R. F., Baars, O., Bakker, K., Baskaran, M., Bates, N. R., Bluhm, K., Bowie, A., Bown, J., Boye, M., Boyle, E. A., Branellec, P., Bruland, K. W., Brzezinski, M. A., Bucciarelli, E., Buesseler, K., Butler, E., Cai, P., Cardinal, D., Casciotti, K., Chaves, J., Cheng, H., Chever, F., Church, T. M., Colman, A. S., Conway, T. M., Croot, P. L., Cutter, G. A., de Baar, H. J., de Souza, G. F., Dehairs, F., Deng, F., Dieu, H. T., Du-

- laquais, G., Echegoyen-Sanz, Y., Edwards, R. L., Fahrbach, E., Fitzsimmons, J., Fleisher, M., Frank, M., Friedrich, J., Fripiat, F., Galer, S. J., Gamo, T., Solsona, E. G., Gerringa, L. J., Godoy, J. M., Gonzalez, S., Grossteffan, E., Hatta, M., Hayes, C. T., Heller, M. I., Henderson, G., Huang, K.-F., Jeandel, C., Jenkins, W. J., John, S., Kenna, T. C., Klunder, M., Kretschmer, S., Kumamoto, Y., Laan, P., Labatut, M., Lacan, F., Lam, P. J., Lannuzel, D., le Moigne, F., Lechtenfeld, O. J., Lohan, M. C., Lu, Y., Masqué, P., McClain, C. R., Measures, C., Middag, R., Moffett, J., Navidad, A., Nishioka, J., Noble, A., Obata, H., Ohnemus, D. C., Owens, S., Planchon, F., Pradoux, C., Puigcorbé, V., Quay, P., Radic, A., Rehkämper, M., Remenyi, T., Rijkenberg, M. J., Rintoul, S., Robinson, L. F., Roeske, T., Rosenberg, M., van der Loeff, M. R., Ryabenko, E., Saito, M. A., Roshan, S., Salt, L., Sarthou, G., Schauer, U., Scott, P., Sedwick, P. N., Sha, L., Shiller, A. M., Sigman, D. M., Smethie, W., Smith, G. J., Sohrin, Y., Speich, S., Stichel, T., Stutsman, J., Swift, J. H., Tagliabue, A., Thomas, A., Tsunogai, U., Twining, B. S., van Aken, H. M., van Heuven, S., van Ooijen, J., van Weerlee, E., Venchiarutti, C., Voelker, A. H., Wake, B., Warner, M. J., Woodward, E. M. S., Wu, J., Wyatt, N., Yoshikawa, H., Zheng, X.-Y., Xue, Z., Zieringer, M., and Zimmer, L. A.: The GEO-TRACES Intermediate Data Product 2014, *Mar. Chem.*, 177, 1–8, doi:10.1016/j.marchem.2015.04.005, 2015.
- Mayor, D. J., Thornton, B., Hay, S., Zuur, A. F., Nicol, G. W., McWilliam, J. M., and Witte, U. F. M.: Resource quality affects carbon cycling in deep-sea sediments, *ISME J.*, 6, 1740–1748, doi:10.1038/ismej.2012.14, 2012.
- Mayzaud, P., Boutoute, M., Gasparini, S., and Mousseau, L.: Lipids and fatty acid composition of particulate matter in the North Atlantic: importance of spatial heterogeneity, season and community structure, *Mar. Biol.*, 161, 1951–1971, doi:10.1007/s00227-014-2476-9, 2014.
- McNichol, A. P. and Aluwihare, L. I.: The Power of Radiocarbon in Biogeochemical Studies of the Marine Carbon Cycle: Insights from Studies of Dissolved and Particulate Organic Carbon (DOC and POC), *Chem. Rev.*, 107, 443–466, doi:10.1021/cr050374g, 2007.
- Merico, A., Bruggeman, J., and Wirtz, K.: A trait-based approach for downscaling complexity in plankton ecosystem models, *Ecol. Model.*, 220, 3001–3010, doi:10.1016/j.ecolmodel.2009.05.005, 2009.
- Middelburg, J.: A simple rate model for organic matter decomposition in marine sediments, *Geochim. Cosmochim. Ac.*, 53, 1577–1581, doi:10.1016/0016-7037(89)90239-1, 1989.
- Middelburg, J. J., Vlug, T., Jaco, F., and van der Nat, W. A.: Organic matter mineralization in marine systems, *Global Planet. Change*, 8, 47–58, doi:10.1016/0921-8181(93)90062-S, 1993.
- Milbrandt, J. A. and Yau, M. K.: A Multimoment Bulk Microphysics Parameterization. Part II: A Proposed Three-Moment Closure and Scheme Description, *J. Atmos. Sci.*, 62, 3065–3081, doi:10.1175/JAS3535.1, 2005.
- Moore, J., Doney, S., and Lindsay, K.: Upper ocean ecosystem dynamics and iron cycling in a global three-dimensional model, *Global Biogeochem. Cy.*, 18, GB4028, doi:10.1029/2004GB002220, 2004.
- Nash, J. E. and Sutcliffe, J. V.: River flow forecasting through conceptual models part I – A discussion of principles, *J. Hydrol.*, 10, 282–290, doi:10.1016/0022-1694(70)90255-6, 1970.
- Ogura, N.: Further studies on decomposition of dissolved organic matter in coastal seawater, *Mar. Biol.*, 31, 101–111, doi:10.1007/BF00391622, 1975.
- Panagiotopoulos, C., Sempéré, R., Obernosterer, I., Striby, L., Goutx, M., Van Wambeke, F., Gautier, S., and Lafont, R.: Bacterial degradation of large particles in the southern Indian Ocean using in vitro incubation experiments, *Org. Geochem.*, 33, 985–1000, doi:10.1016/S0146-6380(02)00057-8, 2002.
- Quay, P.: Was a Carbon Balance Measured in the Equatorial Pacific during JGOFS?, *Deep-Sea Res. Pt. II*, 44, 1765–1781, doi:10.1016/S0967-0645(97)00093-3, 1997.
- Robinson, C., Steinberg, D. K., Anderson, T. R., Arístegui, J., Carlson, C. A., Frost, J. R., Ghiglione, J.-F., Hernández-León, S., Jackson, G. A., Koppelman, R., Quéguiner, B., Ragueneau, O., Rassoulzadegan, F., Robison, B. H., Tamburini, C., Tanaka, T., Wishner, K. F., and Zhang, J.: Mesopelagic zone ecology and biogeochemistry – a synthesis, *Deep-Sea Res. Pt. II*, 57, 1504–1518, doi:10.1016/j.dsr2.2010.02.018, 2010.
- Rothman, D. and Forney, D.: Physical Model for the Decay and Preservation of Marine Organic Carbon, *Science*, 316, 1325–1328, doi:10.1126/science.1138211, 2007.
- Seiter, K., Hensen, C., and Zabel, M.: Benthic carbon mineralization on a global scale, *Global Biogeochem. Cy.*, 19, GB1010, doi:10.1029/2004GB002225, 2005.
- Sempéré, R., Yoro, S. C., Van Wambeke, F., and Charrière, B.: Microbial decomposition of large organic particles in the northwestern Mediterranean Sea: an experimental approach, *Mar. Ecol.-Prog. Ser.*, 198, 61–72, 2000.
- Siegel, D. A., Buesseler, K. O., Doney, S. C., Sailley, S. F., Behrenfeld, M. J., and Boyd, P. W.: Global assessment of ocean carbon export by combining satellite observations and food-web models, *Global Biogeochem. Cy.*, 28, 181–196, doi:10.1002/2013GB004743, 2014.
- Steinacher, M., Joos, F., Frölicher, T. L., Bopp, L., Cadule, P., Cocco, V., Doney, S. C., Gehlen, M., Lindsay, K., Moore, J. K., Schneider, B., and Segschneider, J.: Projected 21st century decrease in marine productivity: a multi-model analysis, *Biogeosciences*, 7, 979–1005, doi:10.5194/bg-7-979-2010, 2010.
- Stemmann, L., Jackson, G. A., and Gorsky, G.: A vertical model of particle size distributions and fluxes in the mid-water column that includes biological and physical processes-Part II Application to a three year survey in the NW Mediterranean Sea, *Deep-Sea Res. Pt. I*, 51, 885–908, 2004.
- Stow, C., Jolliff, J., Jr., D. M., Doney, S., Allen, J., Friedrichs, M., Rose, K., and Wallhead, P.: Skill assessment for coupled biological/physical models of marine systems, *J. Marine Syst.*, 76, 4–15, doi:10.1016/j.jmarsys.2008.03.011, 2009.
- Tagliabue, A., Bopp, L., Dutay, J.-C., Bowie, A., Chever, F., Jean-Baptiste, P., Bucciarelli, E., Lannuzel, D., Remenyi, T., Sarthou, G., Aumont, O., Gehlen, M., and Jeandel, C.: Hydrothermal contribution to the oceanic dissolved iron inventory, *Nat. Geosci.*, 3, 252–256, doi:10.1038/NGEO818, 2010.
- Tagliabue, A., Mtsali, T., Aumont, O., Bowie, A. R., Klunder, M. B., Roychoudhury, A. N., and Swart, S.: A global compilation of dissolved iron measurements: focus on distributions and processes in the Southern Ocean, *Biogeosciences*, 9, 2333–2349, doi:10.5194/bg-9-2333-2012, 2012.

- Takahashi, T., Broecker, W. S., and Langer, S.: Redfield ratio based on chemical data from isopycnal surfaces, *J. Geophys. Res.*, 90, 6907–6924, 1985.
- Tamburini, C., Garcin, J., and Bianchi, A.: Role of deep-sea bacteria in organic matter mineralization and adaptation to hydrostatic pressure conditions in the NW Mediterranean Sea, *Aquat. Microb. Ecol.*, 32, 209–218, 2003.
- Tegelaar, E. W., de Leeuw, J. W., Derenne, S., and Largeau, C.: A reappraisal of kerogen formation, *Geochim. Cosmochim. Ac.*, 53, 3103–3106, doi:10.1016/0016-7037(89)90191-9, 1989.
- Uitz, J., Huot, Y., Bruyant, F., Babin, M., and Claustre, H.: Relating phytoplankton photophysiological properties to community structure on large scales, *Limnol. Oceanogr.*, 53, 614–630, doi:10.4319/lo.2008.53.2.0614, 2008.
- Vähätalo, A. V., Aarnos, H., and Mäntyniemi, S.: Biodegradability continuum and biodegradation kinetics of natural organic matter described by the beta distribution, *Biogeochemistry*, 100, 227–240, doi:10.1007/s10533-010-9419-4, 2010.
- Van Hulten, M. M. P., Sterl, A., Middag, R., de Baar, H. J. W., Gehlen, M., Dutay, J.-C., and Tagliabue, A.: On the effects of circulation, sediment resuspension and biological incorporation by diatoms in an ocean model of aluminium\*, *Biogeosciences*, 11, 3757–3779, doi:10.5194/bg-11-3757-2014, 2014.
- Vichi, M. and Masina, S.: Skill assessment of the PELAGOS global ocean biogeochemistry model over the period 1980–2000, *Biogeosciences*, 6, 2333–2353, doi:10.5194/bg-6-2333-2009, 2009.
- Wadham, J. L., Arndt, S., Tulaczyk, S., Stibal, M., Tranter, M., Telling, J., Lis, G. P., Lawson, E., Ridgwell, A., Dubnick, A., Sharp, M. J., Anesio, A. M., and Butler, C. E. H.: Potential methane reservoirs beneath Antarctica, *Nature*, 488, 633–637, doi:10.1038/nature11374, 2012.
- Weber, T., Cram, J. A., Leung, S. W., DeVries, T., and Deutsch, C.: Deep Ocean Nutrients Imply Large Latitudinal Variation in Particle Transfer Efficiency, *P. Natl. Acad. Sci. USA*, 113, 8606–8611, doi:10.1073/pnas.1604414113, 2016.