

Reproducibility of neuroimaging analyses across operating systems

Tristan Glatard^{1,2}, Lindsay B. Lewis¹, Rafael Ferreira da Silva³, Reza Adalat¹, Natacha Beck¹, Claude Lepage¹, Pierre Rioux¹, Marc-Etienne Rousseau¹, Tarek Sherif¹, Ewa Deelman³, Najmeh Khalili-Mahani¹ and Alan C. Evans^{1*}

¹ McConnell Brain Imaging Centre, Montreal Neurological Institute, McGill University, Montreal, QC, Canada, ² Centre National de la Recherche Scientifique, University of Lyon, INSERM, CREATIS, Villeurbanne, France, ³ Information Sciences Institute, University of Southern California, Marina del Rey, CA, USA

OPEN ACCESS

Edited by:

Andrew P. Davison,
Centre National de la Recherche
Scientifique, France

Reviewed by:

Michael Hanke,
Otto-von-Guericke University,
Germany
Marc De Kamps,
University of Leeds, UK

*Correspondence:

Alan C. Evans,
ACElab, McConnell Brain Imaging
Centre, Montreal Neurological
Institute, McGill University, 3801
University Street, Webster 2B #208,
Montreal, QC H3A 2B4, Canada
alan.evans@mcgill.ca

Received: 23 January 2015

Accepted: 08 April 2015

Published: 24 April 2015

Citation:

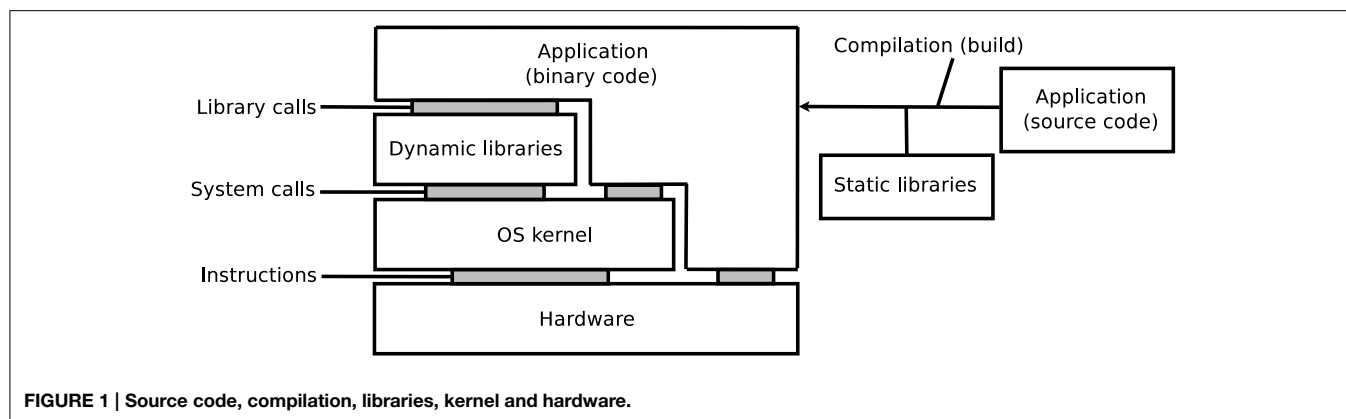
Glatard T, Lewis LB, Ferreira da Silva R, Adalat R, Beck N, Lepage C, Rioux P, Rousseau M-E, Sherif T, Deelman E, Khalili-Mahani N and Evans AC (2015) Reproducibility of neuroimaging analyses across operating systems. *Front. Neuroinform.* 9:12. doi: 10.3389/fninf.2015.00012

Neuroimaging pipelines are known to generate different results depending on the computing platform where they are compiled and executed. We quantify these differences for brain tissue classification, fMRI analysis, and cortical thickness (CT) extraction, using three of the main neuroimaging packages (FSL, Freesurfer and CIVET) and different versions of GNU/Linux. We also identify some causes of these differences using library and system call interception. We find that these packages use mathematical functions based on single-precision floating-point arithmetic whose implementations in operating systems continue to evolve. While these differences have little or no impact on simple analysis pipelines such as brain extraction and cortical tissue classification, their accumulation creates important differences in longer pipelines such as subcortical tissue classification, fMRI analysis, and cortical thickness extraction. With FSL, most Dice coefficients between subcortical classifications obtained on different operating systems remain above 0.9, but values as low as 0.59 are observed. Independent component analyses (ICA) of fMRI data differ between operating systems in one third of the tested subjects, due to differences in motion correction. With Freesurfer and CIVET, in some brain regions we find an effect of build or operating system on cortical thickness. A first step to correct these reproducibility issues would be to use more precise representations of floating-point numbers in the critical sections of the pipelines. The numerical stability of pipelines should also be reviewed.

Keywords: reproducibility, operating systems, Freesurfer, CIVET, FSL

1. Introduction

Neuroimaging pipelines are known to generate different results depending on the computing platform where they are compiled and executed (Krefting et al., 2011; Gronenschild et al., 2012). Such reproducibility issues, also known as computing noise, arise from variations in hardware architectures and software versions. The state-of-the-art solution to deal with these issues is to restrict studies to a single computing platform (hardware and software), which has several drawbacks: (i) results may not be reproducible over time, when the computing platform used to produce them becomes obsolete; (ii) the use of High-Performance Computing (HPC) is limited to homogeneous sets of platforms, while available platforms are increasingly versatile; (iii) in some cases, homogenizing computing platforms is not even feasible, for instance when shared databases are processed in different institutions. Before such reproducibility issues can be resolved, a first step is



to properly quantify and explain them in various use-cases, which is the objective of this paper.

As illustrated on **Figure 1**, the execution of an application depends on its source code, on the compilation process, on software libraries, on an operating system (OS) kernel, and on a hardware processor. Libraries may be embedded in the application, i.e., statically linked, or loaded from the OS, i.e., dynamically linked. The reproducibility of results may be influenced by any variation in these elements, in particular: versions of the source code, compilation options, versions of the dynamic and static libraries (in particular when these libraries implement mathematical functions), or architecture of hardware systems. Some programming languages, for instance MATLAB, Java, Python, Perl, and other scripting languages, additionally rely on a specific runtime software, which can further influence the results.

On GNU/Linux, a dominant OS in neuroimaging (Hanke and Halchenko, 2011) and in HPC¹, applications rely on the GNU C library, `glibc`², which includes a mathematical library, `libmath`. New versions of `glibc` are released regularly, and subsequently adopted by distributions of the GNU/Linux OS, sometimes several years later. We focus on the differences generated by different library versions, which we call *inter-OS* differences for dynamically-linked applications, and *inter-build* differences for statically-linked applications. *Inter-run* differences, that is, differences between runs of the same application on the same platform may also occur, for instance when applications use pseudo-random numbers (this particular case can be addressed by forcing the seed number used to initialize the pseudo-random number generator).

This paper reports on our experiments with three of the main neuroimaging tools: the FMRIB Software Library (FSL, Jenkinson et al., 2012), *Freesurfer* (Fischl, 2012), and *CIVET* (Ad-Dabbagh et al., 2006). We quantify the reproducibility of tissue classification (cortical and subcortical), resting-state fMRI analysis, and cortical thickness extraction, using different builds of the tools, deployed on different versions of GNU/Linux. We also identify some causes of these differences, using library-call and system-call interception. The paper closes with a discussion suggesting directions to address the identified reproducibility issues.

¹<http://www.top500.org>

²<http://www.gnu.org/software/libc>

TABLE 1 | Operating systems and analysis software.

	Cluster A	Cluster B
Applications	Freesurfer 5.3.0, build 1 FSL 5.0.6, build 1 CIVET 1.1.12-UCSF, build 1	Freesurfer 5.3.0, build 1 and 2 FSL 5.0.6, build 1 and 2 CIVET 1.1.12-UCSF, build 1
Interpreters	Python 2.4.3, bash 3.2.25, Perl 5.8.8, tcsh 6.14.00	Python 2.7.5, bash 4.2.47, Perl 5.18.2, tcsh 6.18.01
<code>glibc</code> version	2.5	2.18
OS	CentOS 5.10	Fedora 20
Hardware	x86_64 CPUs (Intel Xeon)	x86_64 CPUs (Intel Xeon)

2. Materials and Methods

2.1. Operating Systems and Applications

Table 1 summarizes the platforms used in our experiments. We used two HPC clusters with Red-Hat-like Linux distributions: (A) CentOS release 5.10, running `glibc` 2.5 released in 2006, and (B) Fedora release 20, running `glibc` 2.18 released in 2013. We installed *Freesurfer* 5.3.0 and FSL 5.0.6 on these clusters using the 64-bit binaries released on their respective websites^{3,4}. We used the *Freesurfer* CentOS 4 (1) and CentOS 6 (2) builds⁵, and the FSL CentOS 5 (1) and CentOS 6 (2) builds⁶. We compiled and installed *CIVET* version 1.1.12-UCSF on cluster A, and used the same build on cluster B.

Freesurfer releases mainly consist of statically-linked executables and `tcsh` scripts. Dynamically-linked executables and Perl scripts are also present, in the `mni` directory where the `minc` tools are installed. The main differences between the CentOS 4 and CentOS 6 builds are the version of the `gcc` compiler potentially used to compile them (`gcc` 3.x on CentOS 4 vs. `gcc` 4.y on CentOS 6), and the `glibc` versions embedded in the executables (`glibc` 2.3 on CentOS 4 vs. 2.12 on CentOS 6). FSL and *CIVET* consist of dynamically linked executables which depend

³<http://freesurfer.net/fswiki/Download>

⁴<http://fsl.fmrib.ox.ac.uk/fsldownloads/fsldownloadmain.html>

⁵md5sum: 084d341cdf98305127aabee48a6f4e0b and 6642289df823ebc27de52af57e9b3989.

⁶md5sum: 4d3a170d2311fa1c7e3cf6efd13f51a5 and 6cf9e3e58b35948416f833a21f495bd8.

on `libmath` and other libraries. FSL also contains `Tcl` (provided with the FSL release), `bash` and `Python` scripts, while CIVET has `Perl` and `bash` scripts.

All data movements and task executions on the clusters were performed with the CBRAIN platform for High-Performance Computing (Sherif et al., 2014).

2.2. FSL: Tissue Classification

We used 1.5T T1-weighted MR images from 150 subjects of the International Consortium for Brain Mapping (ICBM, Mazziotta et al., 2001). First, non-brain tissue was removed from the images with FSL BET (Brain Extraction Tool, Smith, 2002), using the default parameters and no options. Next, for cortical and subcortical tissue classification, we used FSL FAST (FMRIB's Automated Segmentation Tool, Zhang et al., 2001) and FSL FIRST (FMRIB's Linear Image Registration Tool, Patenaude et al., 2011) with the default parameters and no options. The experiment was repeated twice in each execution condition to ensure that no inter-run differences were present. Differences were first identified from file checksums. When checksums did not match, classification results were compared using the Dice similarity index (Dice, 1945) (global measure), and the sum of binarized differences across subjects (local measure).

2.3. FSL: Resting-state fMRI

We used 37 resting-state fMRI (RSfMRI) data arbitrarily selected from an ADNI-GO⁷ dataset (site 130). All fMRI volumes were collected on a 3T Achieva Philips Medical Systems scanner with a gradient echo EPI (TR/TE = 3000/30 ms; Flip Angle = 80.0°; 64.0 × 64.0 inplane isotropic resolution of 3.3125 mm and slice thickness of 3.313 mm). Each RSfMRI dataset contained 140 volumes. Structural images were obtained using a manufacturer T1W MPRAGE sequence.

RSfMRI analysis was carried out using Probabilistic Independent Component Analysis (ICA, Beckmann and Smith, 2004) as implemented in MELODIC (Multivariate Exploratory Linear Decomposition into Independent Components) Version 3.14. We executed MELODIC with FSL build 1, with the default parameters and different initializations of the random seed: (a) fixed, and (b) variable (time-based), which is the default. We also varied the dimension of the space of independent components: (c) dimension set to 20, and (d) automatic dimension detection using the Laplace approximation to the Bayesian evidence of the model order (Minka, 2000; Beckmann and Smith, 2004), which is the default. For variable random seeds, we re-executed MELODIC twice on each cluster to measure the inter-run variability.

We compared results between clusters A and B by computing the Dice coefficient between their binarized thresholded components, distinguishing the negative and positive parts of the components. As components may not be ordered consistently between A and B, each component in A was matched to the maximally correlated component in B using FSL's `fslcc`. Because this operation is not symmetric, we included Dice coefficients for

both A–B and B–A. In case d, we also compared the number of dimensions detected on cluster A vs. cluster B.

Then, we analyzed the inter-OS differences between fMRI pre-processing steps. Using `fslmaths` and `fslstats`, we computed the mean absolute difference after motion correction, thresholding, spatial smoothing, intensity normalization, and temporal filtering. For motion correction, we also determined the residual rigid transformation $T_1 \circ T_2^{-1}$ at each time-point, where T_1 and T_2 are the transformations obtained on the different clusters. We measured the norm of the translation vector and the absolute value of the rotation angle of this residual transformation.

2.4. Freesurfer and CIVET: Surface Segmentation and Cortical Thickness Extraction

Cortical thickness maps were generated with Freesurfer and CIVET from the same ICBM dataset used in Section 2.2. In our Freesurfer analysis, we performed all stages of cortical reconstruction using the `recon-all` pipeline, with `qcache` option enabled. In our CIVET analysis, we used the default options with the following additional specifications: an N3 spline distance of 200 mm, 12° of freedom for the linear registration, and the `tlink` metric with a smoothing kernel size of 20 mm FWHM (full-width at half maximum) for the cortical thickness.

Cortical thickness maps were computed in each subject's native space. For Freesurfer, these thickness maps were then resampled to Freesurfer's default `fsaverage` surface template as a common space, while cortical thickness maps for CIVET were resampled to CIVET 1.1.12's default MNI152 surface template. Resampled thickness files from both Freesurfer and CIVET were imported to the SurfStat MATLAB toolbox (Worsley et al., 2009) for statistical analyses.

To directly compare the effect of build and OS on cortical thickness, a difference score between processing conditions (cluster A–B or build 1–2) was calculated with SurfStat for the cortical thickness of every subject at every vertex, and a Generalized Linear Model (GLM) was computed consisting simply of the formula $Y = 1$.

2.5. Library and System Call Interception

We recorded calls to `libmath` performed by dynamically-linked applications using `ltrace`⁸ version 0.7.91, patched to facilitate output formatting, and configured to trace children processes created by `fork()` and `clone()`. We first completely re-executed a task on each cluster using `ltrace`'s summary mode to list the mathematical functions called by the application. Next, we configured `ltrace` to record and print the input and output values used in these function calls. In order to avoid excessively large log files, we limited the analysis to a few hours per task, which covered the first few million calls. We also recorded system calls made by applications using `strace`⁹.

To compare two `ltrace` traces, we assumed that two executions producing identical results perform the same calls to mathematical functions, in the same order. Traces can then be

⁷<http://www.adni-info.org>

⁸<http://ltrace.org>

⁹<http://strace.sourceforge.net>

compared line by line. We classified differences between trace lines in four types. Type-1 differences correspond to functions called on different arguments that produce identical results. They are likely to occur in non-injective functions such as `floor()` and `ceil()`. They have little impact on the execution, but are a sign of other differences. Type-2 differences correspond to functions called on different arguments that produce different results. Type-3 differences correspond to functions called on identical arguments that produce different results. They are a sign of implementation differences in the mathematical functions. Type-3 differences usually trigger cascading type-2 and type-3 differences. Mismatches correspond to trace lines where different functions are called. They are a sign that the control flow of the compared conditions differed, for instance due to different numbers of iterations in loops.

3. Results

3.1. FSL: Brain Extraction

FSL BET produced identical results for all subjects on clusters **A** and **B**, as well as for builds **1** and **2**.

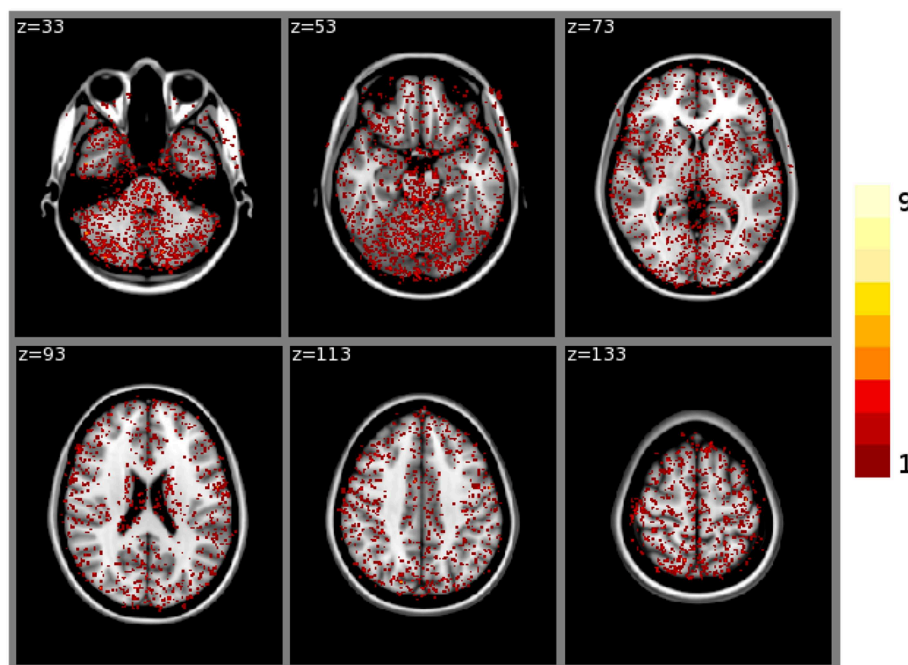
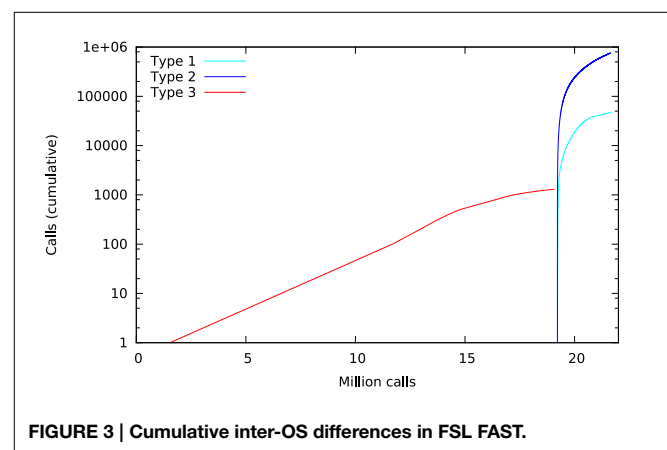
TABLE 2 | Dice coefficients between cortical tissue classifications on cluster A vs. cluster B (FSL FAST, build 1, $n = 150$ subjects).

Tissue	Average dice	Standard deviation
Global	0.99973	0.00013
Gray matter	0.99971	0.00014
White matter	0.99973	0.00013
CSF	0.99977	0.00012

3.2. FSL: Cortical Tissue Classification

FSL FAST cortical tissue classification produced identical results for builds **1** and **2**, but differences between cluster **A** and cluster **B** were found in the classifications of all 150 tested subjects. **Table 2** shows the Dice coefficients comparing results obtained on clusters **A** and **B** with FSL FAST, using build **1**. Dice coefficients are very high, indicating very minor differences. **Figure 2** shows the sum of binarized differences across segmented subjects. Differences are mostly localized at the interfaces between tissues.

Library call interception reveals the cause of these differences. **Figure 3** plots a trace of the first 22 million calls to `libmath` made by FSL FAST to process a randomly-chosen subject of the study. Only `log()` and `expf()` were called.



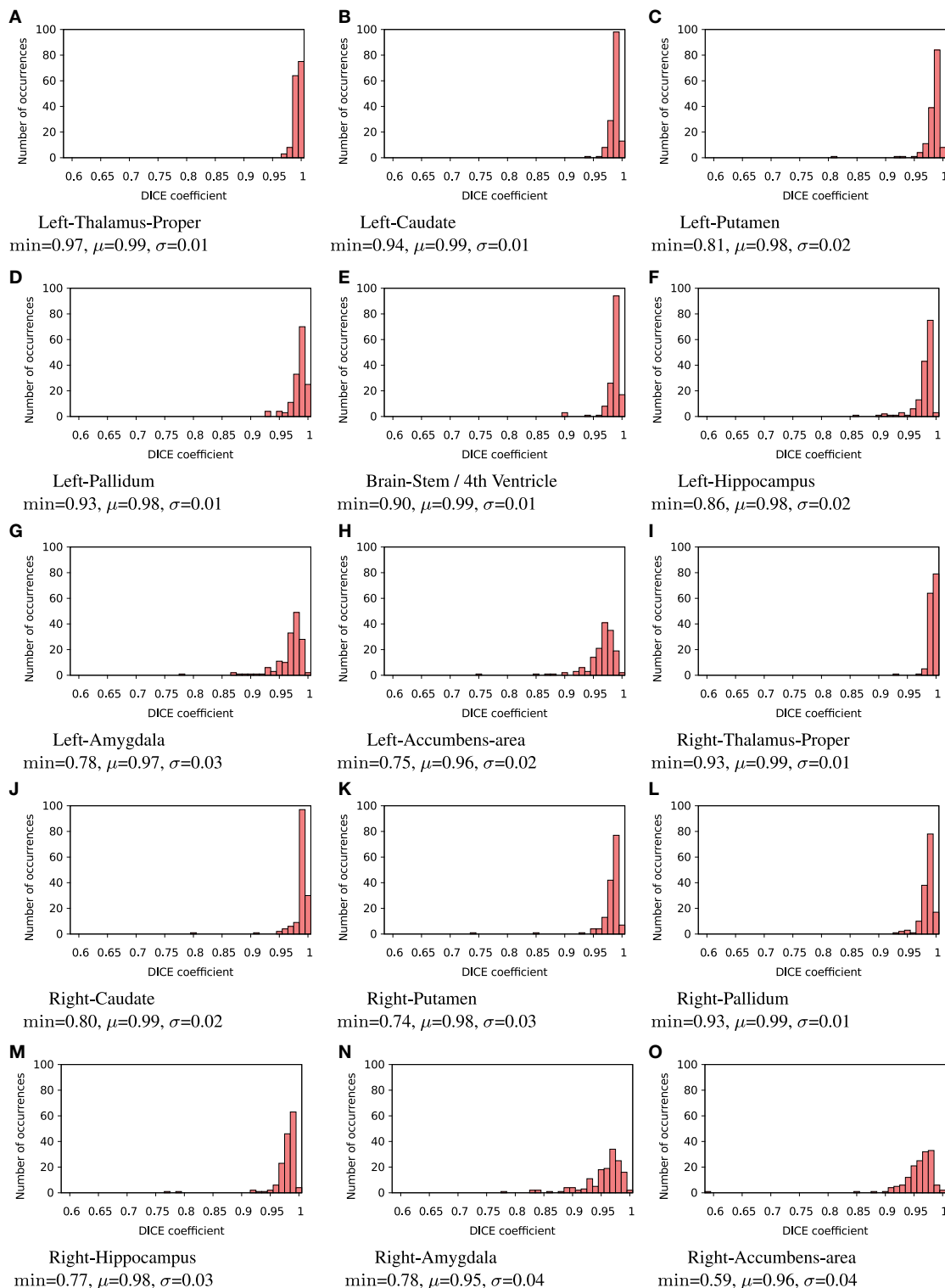


FIGURE 4 | Histograms of Dice coefficients between classifications obtained on cluster A vs. cluster B with FSL FIRST. All bins are of size 0.1. min, μ , and σ are the minimum, mean and standard deviation Dice coefficient, respectively.

The first differences appear at 1.5 million calls: they are type-3 differences in function `expf()` which manipulates single-precision floating-point representations. Type-1 and type-2 differences appear at 19.2 million calls, both in `log()` and `expf()`. No mismatch was found. The following C program excerpt reproduces the first observed type-3 difference:

```
float a=1.5405185;
float b=expf(a);
printf("expf(%.30f)=%.30f\n",a,b);
```

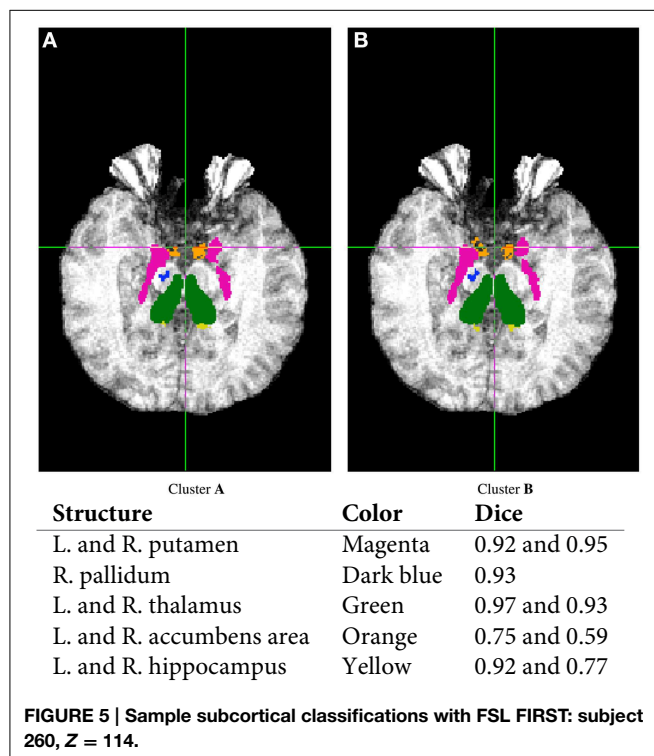
This program prints 30 decimals to display the complete representation of the floating-point numbers. When this representation has less than 30 decimals, `printf()` pads the displayed string with zeros. With `glibc 2.5`, this program prints:

```
expf(1.540518522262573242187500000000)
=4.6670093536376953125000
```

The result produced by `expf()`, stored in variable `b`, is encoded as 24 58 95 40 in hexadecimal (little-endian convention). On the other hand, with `glibc 2.18`, the program prints:

```
expf(1.540518522262573242187500000000)
=4.6670098304748535156250
```

The result produced by `expf()`, stored in variable `b`, is encoded as 25 58 95 40 in hexadecimal (little-endian convention): 1 bit is flipped compared to the result obtained with `glibc 2.5`. These numerical differences, which originate in changing implementation of `expf()` between `glibc 2.5` and `2.18`, are a cause of the inter-OS differences in FSL FAST.



3.3. FSL: Subcortical Tissue Classification

FSL FIRST subcortical tissue classification produced identical results for builds 1 and 2, but differences between cluster A and cluster B were found in the classifications of all 150 tested subjects. **Figure 4** plots the histograms of Dice coefficients for the 15 structures segmented with FSL FIRST, using build 1. All histograms have a main mode around 0.99, but overall, only 12.7% of the classifications are identical on cluster A and cluster B (286 classifications out of 2250). Some Dice coefficients are very low, down to 0.59, in particular for small structures such as the amygdalae and the accumbens areas. **Figure 5** shows a result sample with Dice coefficients ranging from 0.75 to 0.95.

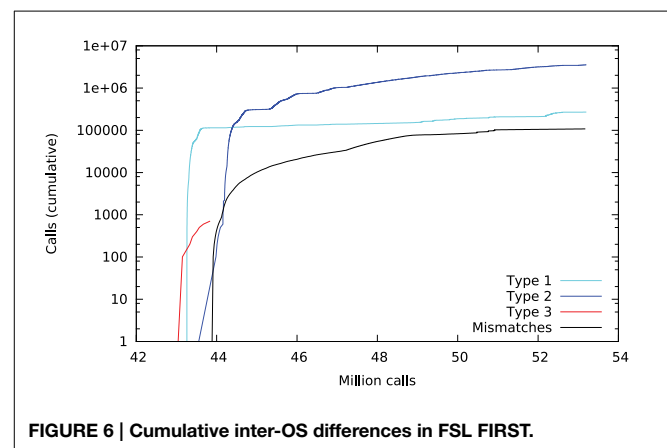
Figure 6 plots a trace of the first 53 million calls to `libmath` made by FSL FIRST to process a randomly-chosen subject. The trace shows no inter-OS difference until 43 million calls, where type-3 differences start to appear in function `cosf()`, soon followed by type-1 differences in `ceilf()` and `floorf()`, and type-2 differences in `cosf()`, `sinf()`, `ceilf()`, `floorf()`, and `logf()`. Mismatches appear at 43.9 million calls, indicating that inter-OS differences have an impact on the control flow of the program. An inspection of the source code shows that the bounds of a few loops are determined from `floorf()` and `ceilf()`¹⁰, which is a plausible explanation for these mismatches.

Type-3 differences come exclusively from function `cosf()` which manipulates single-precision floating-point representations. The following C program excerpt reproduces the first one:

```
float a=0.523598790;
float b=cosf(a);
printf("cosf(%.30f)=%.30f\n",a,b);
```

With `glibc 2.5`, this program prints:

```
cosf(0.523598790168762207031250000000)
=0.8660254478454589843750000
```



¹⁰See for instance the `for` loops in method `intensity_hist` in `first.cc`, called from `do_work`

The result produced by `cosf()`, stored in variable `b`, is encoded as `d8 b3 5d 3f` in hexadecimal (little-endian convention). With `glibc` 2.18, this program prints:

```
cosf(0.523598790168762207031250000000)
=0.8660253882408142089843750
```

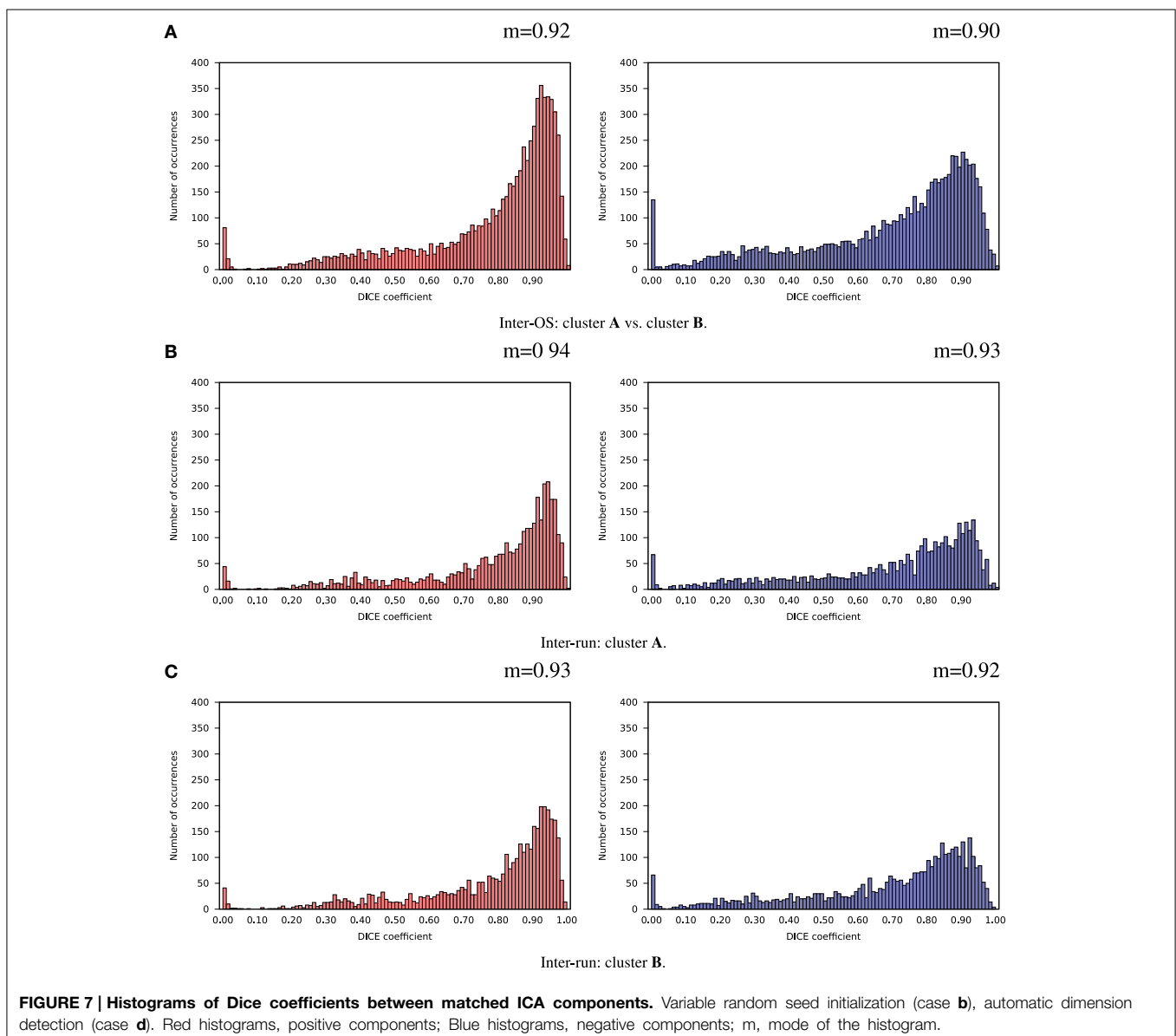
The result produced by `cosf()`, stored in variable `b`, is encoded as `d7 b3 5d 3f` in hexadecimal (little-endian convention): again, 1 bit is flipped compared to the result obtained with `glibc` 2.5. These numerical differences, which originate in changing implementation of `cosf()` between `glibc` 2.5 and 2.18, are a cause of the inter-OS differences in FSL FIRST.

3.4. FSL: Resting-state fMRI

3.4.1. Variable Random Seeds

In case **d** (automatic dimension detection), we observed no inter-run differences in the number of detected dimensions, but we found inter-OS differences in 2 subjects out of 37 (47 vs. 48 components and 55 vs. 57 components, respectively).

For the remaining 35 subjects, inter-run and inter-OS differences obtained with variable random seeds are shown in **Figure 7** for case **d** (automatic dimension detection), and in **Figure 8** for case **c** (dimension fixed to 20). All histograms appear bimodal, with a first mode at Dice = 0, and a second around Dice = 0.9. The modes at Dice = 0 correspond to situations where the positive and negative components are inverted, or one of the two compared components has very few voxels. Inter-run and inter-OS differences are significant, and they are of similar magnitude (see modes *m* reported above the graphs).



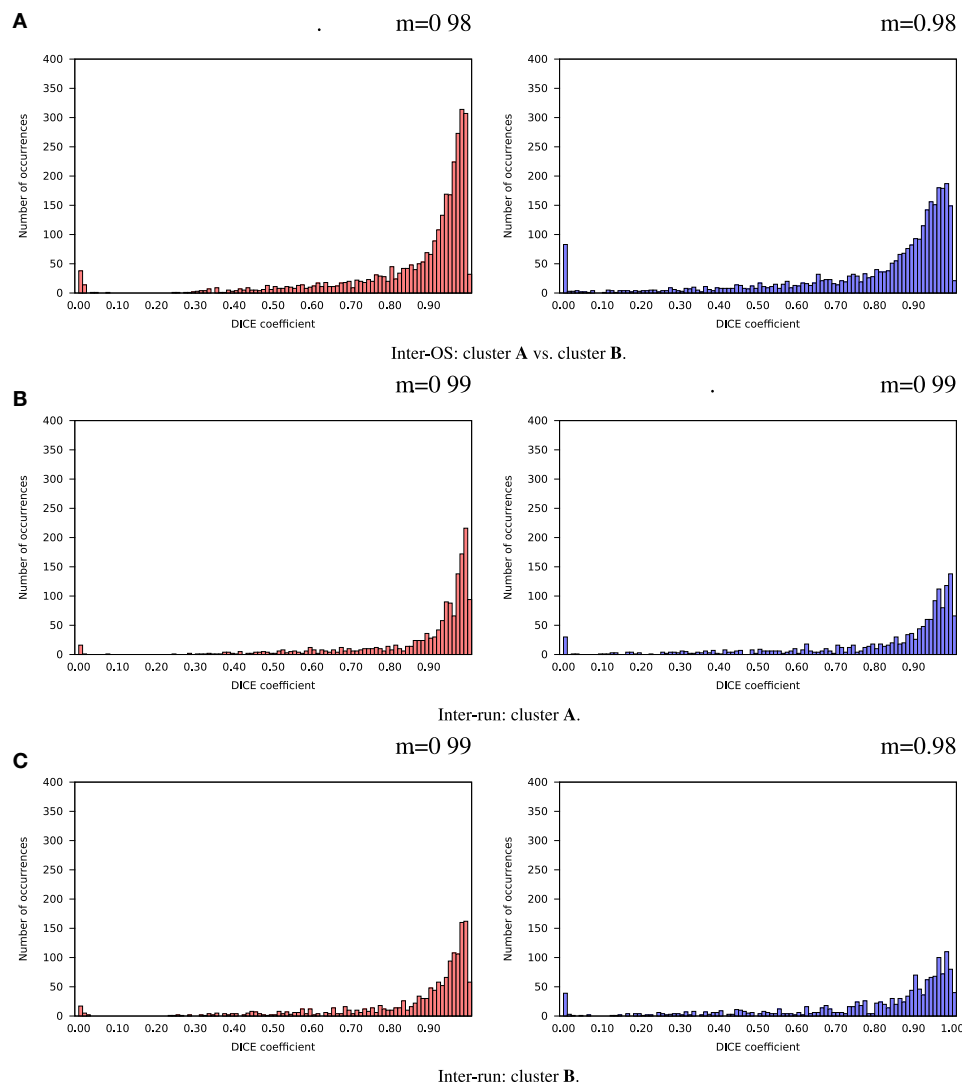


FIGURE 8 | Histograms of Dice coefficients between matched ICA components. Variable random seed initialization (case **b**), fixed dimension (case **c**). Red histograms, positive components; Blue histograms, negative components; m, mode of the histogram.

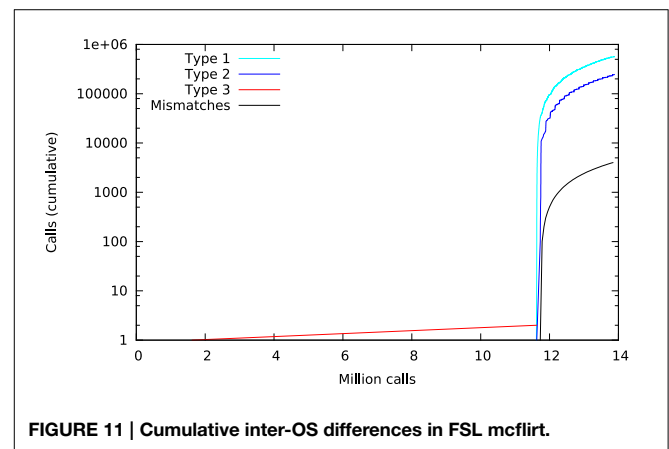
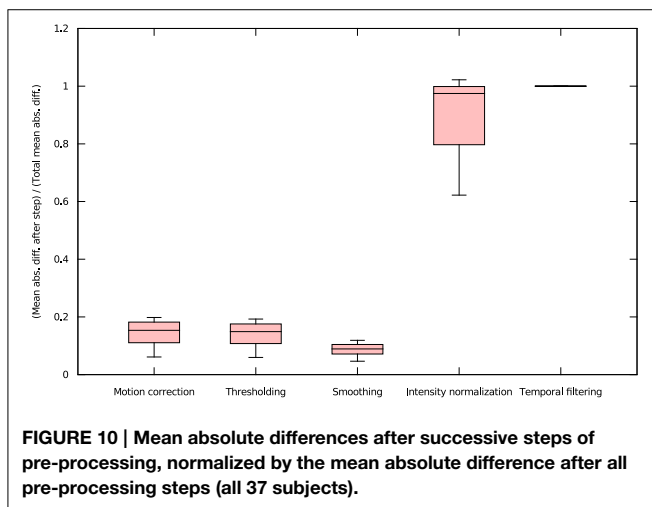
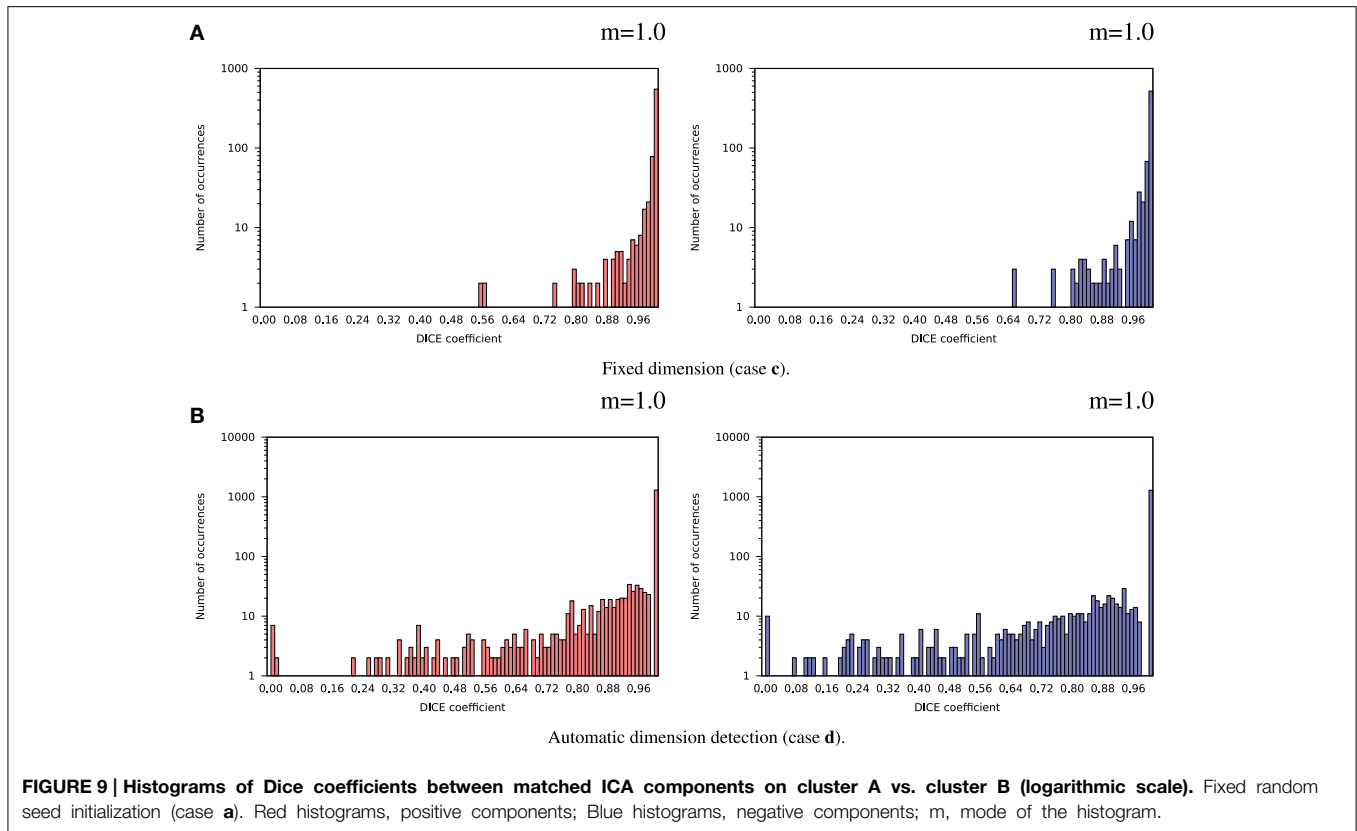
3.4.2. Fixed Random Seeds

Inter-OS differences in the number of detected dimensions were found in the same 2 subjects as for variable seeds. For the remaining 35 subjects, inter-OS differences obtained with fixed random seeds are shown on **Figure 9** for fixed (case **c**) and automatically detected dimensions (case **d**). Inter-OS differences are substantial in both cases, with Dice values lower than 0.9.

We found that inter-OS differences appear if and only if pre-processed data are different, which occurs in 12 out of 37 subjects. More precisely, inter-OS differences appear if and only if motion-corrected data are different. **Figure 10** plots the measured inter-OS mean absolute difference after each main pre-processing step, normalized with the mean absolute difference after all pre-processing steps. We can see that motion correction

generates only slight differences, less than 20% of the total difference created by pre-processing. These differences are reduced by spatial smoothing but largely amplified by intensity normalization. Thresholding and temporal filtering have only a minor impact on the global error. Differences in motion correction are quite subtle: residual transformations all have a norm of translation vector below 10^{-5} mm, and rotation angle under 0.096° .

Figure 11 shows a trace of the first 14 million calls to `libmath` made by `mcflirt` to process a randomly-chosen subject. The first inter-OS difference is a type-3, observed at 1.6 million calls in function `sinf()` which manipulates single-precision floating-point representations. Another type-3 difference in the same function appears at 11.6 million calls, soon followed by type-1 and type-2 differences in `ceilf()`, `cosf()`, `logf()`, `sinf()`, and `floorf()`.



Mismatches appear at 11.7 million calls, indicating that inter-OS differences have an impact on the control flow of the program. The two observed type-3 differences come from function `sinf()`. The following C program excerpt reproduces the first one:

```
float a=0.042260922;
float b=sinf(a);
printf("sinf(%.30f)=%.30f\n",a,b);
```

With `glibc 2.5`, this program prints:

```
sinf(0.042260922491550445556640625000)
=0.042248345911502838134765625000
```

The result produced by `sinf()`, stored in variable `b`, is encoded as `9a 0c 2d 3d` in hexadecimal (little-endian convention). With `glibc 2.18`, the program prints:

```
sinf(0.042260922491550445556640625000)
=0.042248342186212539672851562500
```

The result produced by `sinf()`, stored in variable `b`, is encoded as `99 0c 2d 3d` in hexadecimal (little-endian convention):

again, 1 bit is flipped compared to the result obtained with `glibc 2.5`. These numerical differences, which originate in changing implementation of `sinf()` between `glibc 2.5` and `2.18`, are a cause of the inter-OS differences in `mcflirt`.

3.5. Freesurfer and CIVET: Surface Segmentation and Cortical Thickness Extraction

Four subjects were dropped from the results for the following reasons: Freesurfer analysis failed to reach completion ($n = 3$), and missing age information ($n = 1$).

3.5.1. Freesurfer: Inter-Build Differences

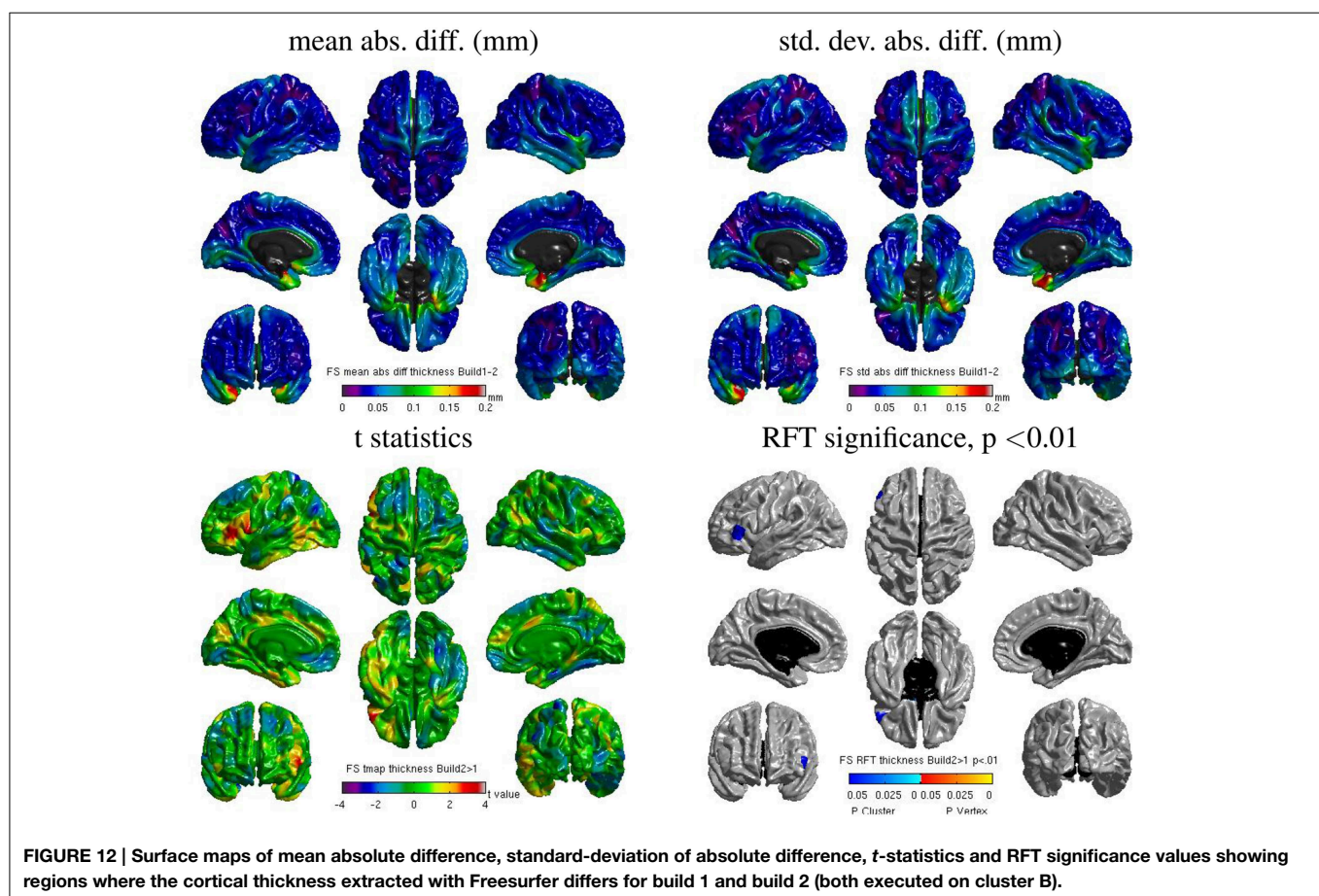
Some localized regions of differences were found for Freesurfer build 1 vs. 2 on cluster B. **Figure 12** shows surface maps of mean absolute difference, standard deviation of absolute difference, t -statistics and whole-brain random field theory (RFT) corrections (peaks and clusters) for $n = 146$ subjects at significance value of $p < 0.01$, comparing the cortical thickness values extracted by Freesurfer build 1 and build 2 on cluster B. Areas in shades of blue on the RFT map are significant at the cluster (but not peak) level. The cortical thickness values extracted with build 1 are significantly different than with build 2 in the left inferior frontal gyrus at an initial cluster threshold of $p < 0.01$ (family-wise error (FWE) of $p < 0.05$).

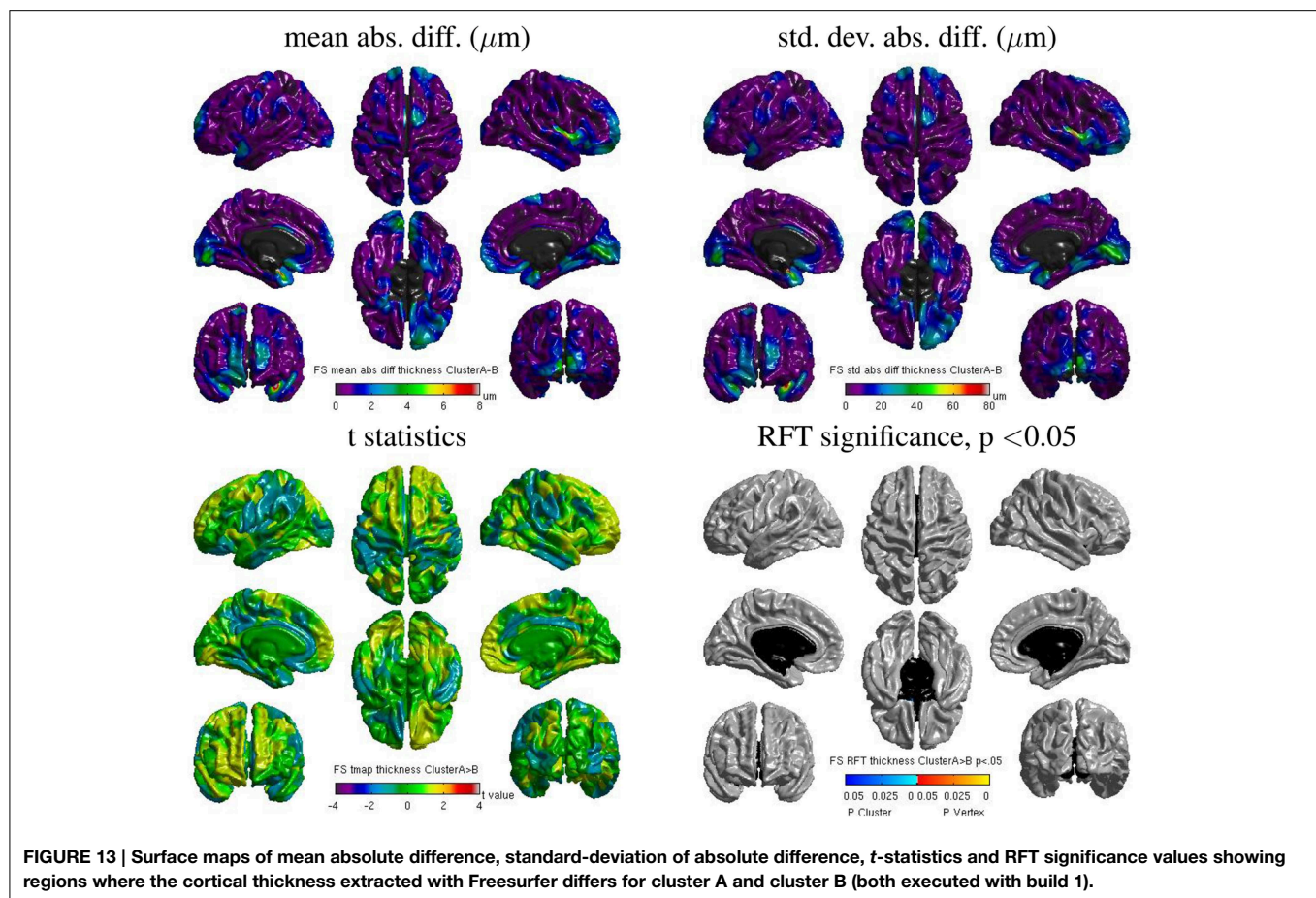
3.5.2. Freesurfer: Inter-OS Differences

Despite the static linking of Freesurfer's main executables, we still found small inter-OS differences. **Figure 13** shows surface maps of mean absolute difference, standard deviation of absolute difference, t -statistics and whole-brain random field theory (RFT) corrections for $n = 146$ subjects at a significance value of $p < 0.05$, comparing the cortical thickness values extracted by Freesurfer build 1 on cluster A and cluster B. Note the different scales compared to **Figure 12**. Although no values on the RFT map reach significant levels, the t values do reach upwards of ± 2 . These residual differences, present in 6 subjects, are introduced by statically-linked executables `mri_em_register` (2 subjects) and `mri_surf2surf` (4 subjects). Using `strace`, we found that these tools open a few libraries from the operating system, including `libmath`. Differences in these libraries are very likely to create the observed inter-OS differences, although `ltrace` cannot be used on statically-linked tools to confirm this hypothesis.

3.5.3. CIVET: Inter-OS Differences

We also found some localized regions of differences for CIVET cluster A vs. B. **Figure 14** shows surface maps of mean absolute difference, standard deviation of absolute difference, t -statistics and random field theory (RFT) for $n = 146$ subjects at a significance value of $p < 0.05$, comparing the cortical thickness values





extracted by CIVET on cluster A and B. The cortical thickness values extracted on cluster A are significantly different than on cluster B at an initial cluster threshold of $p < 0.05$ (FWE of $p < 0.0005$ in the right paracentral lobule and FWE of $p < 0.04$ in the left middle temporal region). No significant difference between clusters A and B was found at a stricter initial cluster threshold of $p < 0.01$.

4. Discussion

4.1. General Conclusions

The implementation of mathematical functions manipulating single-precision floating-point numbers in `libmath` has evolved during the last years, leading to numerical differences in computational results. While these differences have little or no impact on simple analysis pipelines such as brain extraction and cortical tissue classification, their accumulation creates important differences in longer pipelines such as the subcortical tissue classification, RSfMRI analysis, and cortical thickness extraction.

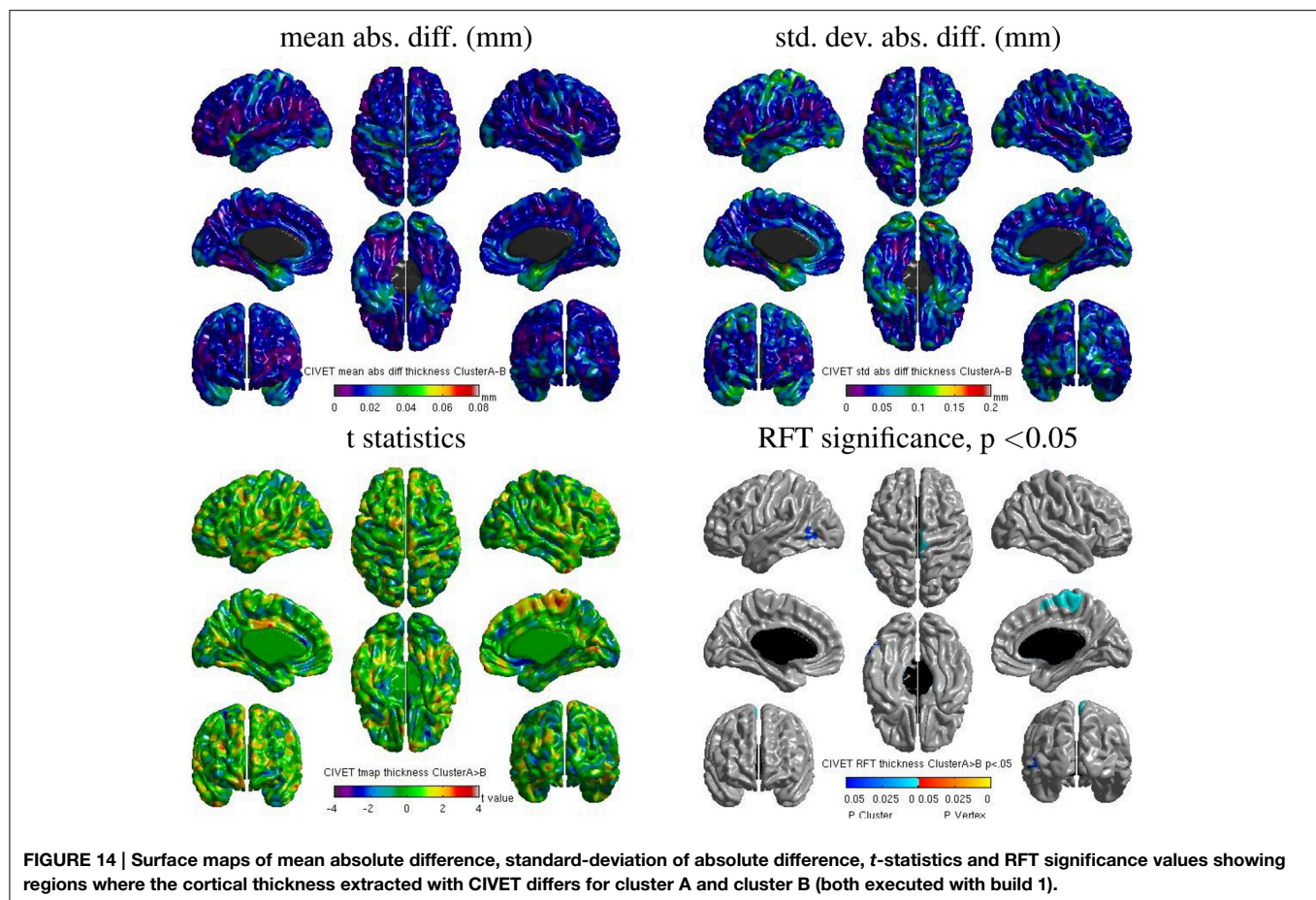
For cortical tissue classification with FSL, Dice values as low as 0.59 were found between OSeS. In RSfMRI, different numbers of components were occasionally found in the two OSeS, and the identified components had important differences. Differences in

cortical thickness were found for some brain regions as a function of build or OS.

Statically building programs improves reproducibility across OSeS, but small differences may still remain when dynamic libraries are loaded by static executables, as observed with Freesurfer. When static builds are not an option, software heterogeneity might be addressed using virtual machines (VMs) as tested in CBRAIN (Glatard et al., 2014), or lighter container environments such as Docker¹¹. Specific Linux distributions such as Neurodebian (Halchenko and Hanke, 2012) could be used with these environments to guarantee a wide reproducibility within the community. However, such solutions are only workarounds: differences may still arise between static executables built on different OSeS (as seen in our Freesurfer study), or between dynamic executables executed in different VMs.

Although it would not improve numerical stability, a more rigorous way to address reproducibility issues would be to use higher-precision representations of floating-point numbers, and to avoid using functions operating on single-precision numbers (e.g., `expf()`, `cosf()`, ...). Using double precision would probably address most issues, and the remaining ones could be tackled with quadruple or even arbitrary precision as discussed in Bailey et al. (2012). To limit the resulting performance reduction,

¹¹<http://www.docker.com>



precision could be increased only in the code sections creating reproducibility issues.

Identifying such code sections is not trivial though, in particular when pipelines result from a long development process. We showed that library call interception yields accurate information about the functions that are responsible for reproducibility issues in dynamically-linked programs. This technique is, however, extremely heavy in terms of computational overhead and size of the generated traces, and therefore could not be used systematically.

When pipelines produce intermediary result files, a more efficient way to identify suspicious code sections is to compare these intermediary files using some data-specific distance. For instance, using the mean absolute difference between intermediary results produced by FSL pipelines, we were able to quantify the effect of fMRI pre-processing steps on inter-OS reproducibility and to narrow-down the investigation to motion correction. We were also able to identify the tools creating inter-OS differences in Freesurfer.

To conclude, it is clear to us that developers should carefully review the numerical reproducibility and stability of their pipelines using quantitative tests conducted in different execution conditions. However, this could not be done systematically unless a proper platform is available to run such tests and interpret the results. Such a platform could provide benchmarks,

virtual execution environments, and analysis tools to help developers identify the cause of observed differences. Frameworks such as testkraut¹² could be useful in this context.

4.2. Limitations

Our results cover some of the main neuroimaging analysis tools (Freesurfer, FSL and CIVET), executed on RedHat-like Linux operating systems which are widely used in neurosciences. To cover a large spectrum of OSES, we used the oldest still-supported version of CentOS and the latest version of Fedora which anticipates on the coming CentOS versions. This encompasses 7 years of glibc development, from version 2.5 in 2006 to 2.18 in 2013, and a much longer range of Linux distributions. For instance, our study gives an idea of reproducibility issues that will arise when upgrading platforms to the recently-released CentOS 7 distribution, which is based on glibc 2.17.

The range of operating systems tested in this study remains, of course, limited. We expect that comparing intermediate glibc versions would only reduce the magnitude of the reported effects. Other Linux distributions, for instance Debian and Ubuntu, are very likely to suffer the same reproducibility issues as long as they are based on glibc. Similar issues are also very likely to

¹²<https://testkraut.readthedocs.org/en/latest/index.html>

occur on non-Linux operating systems, see for instance differences observed between Mac OS 10.5 and 10.6 by Gronenschild et al. (2012).

Our study is limited to compiled application programs. Applications written with interpreted languages such as MATLAB and Python would most likely behave differently. Compilation options were also not considered in this study and are likely to impact the reproducibility of results. For instance, the `gcc` C compiler has several options that speed-up floating-point operations at the cost of numerical correctness. Using such options to compile programs that are sensitive to small numerical differences is very likely to compromise inter-OS reproducibility, too. Some of the differences observed between Freesurfer builds are likely to originate from the use of different versions of `gcc` to compile these builds.

4.3. Related Work

Gronenschild et al. (2012) report the effects of Freesurfer version, workstation type, and OS version on anatomical volume and cortical thickness measurements. Their study was conducted with different versions of Freesurfer (4.3.1, 4.5.0, and 5.0.0). We deliberately chose not to compare different versions of the tested pipelines. Instead, we focused on differences that originate in the system libraries. The Freesurfer versions used by Gronenschild et al. (2012) were dynamically linked (version 5.0.0 was linked statically on Linux, but dynamically on Mac), while the current one (5.3) is statically linked. Thus, the difference reported by Gronenschild et al. (2012) between Mac OS 10.5 and Mac OS 10.6, and between HP and Mac, most likely comes from the use of different system libraries in these platforms. Statically building executables might be seen as a way to address the issues shown by Gronenschild et al. (2012); our study shows that it is only a workaround since different builds unsurprisingly yield different results. We also show that these problems are not specific to Freesurfer, but generalize to FSL and to some extent CIVET; it suggests that several other analysis packages are likely to be impacted. Besides, our choice of operating systems (CentOS 5.10 and Fedora 20) encompasses 7 years of `glibc` development; this gives an idea of how results may evolve in the coming upgrades of HPC clusters to CentOS 7. Finally, we provide an explanation of the causes for inter-OS reproducibility issues; this suggests that these issues may be addressed by using more precise representations of floating-point numbers in some sections of the pipelines.

Krefting et al. (2011) studied the reproducibility of Freesurfer 5.0.0 on Mac OS 10.6, CentOS 4, and SUSE Linux 10.1. They report that the CentOS 5 and CentOS 4 Freesurfer builds gave identical results, but that results obtained with the same build

were different across operating systems. This seems in contradiction with our results (we found that different Freesurfer builds give different results). A possible explanation for these differences is that the authors used a dynamically-linked version of Freesurfer 5.0.0, as suggested when they report that different implementations of dynamically linked libraries may explain their findings.

Acknowledgments

We thank Fabrice Bellet for his rigorous administration of the cluster at Creatis used in this work (cluster **B**). We also thank Compute Canada and Calcul¹³ Québec¹⁴ for providing the infrastructure (cluster **A**) to perform the experiments presented in this paper. This work is in the scope of the LABEX PRIMES (ANR-11-LABX-0063) of Université de Lyon, within the program “Investissements d’Avenir” (ANR-11-IDEX-0007) operated by the French National Research Agency (ANR). This paper also acknowledges the support of the National Science Foundation under grant #ACI-1148515. Data collection and sharing for the fMRI part of this study was funded by the Alzheimer’s Disease Neuroimaging Initiative (ADNI) (National Institutes of Health Grant U01 AG024904) and DOD ADNI (Department of Defense award number W81XWH-12-2-0012). ADNI is funded by the National Institute on Aging, the National Institute of Biomedical Imaging and Bioengineering, and through generous contributions from the following: Alzheimers Association; Alzheimers Drug Discovery Foundation; Araclon Biotech; BioClinica, Inc.; Biogen Idec Inc.; Bristol-Myers Squibb Company; Eisai Inc.; Elan Pharmaceuticals, Inc.; Eli Lilly and Company; EuroImmun; F. Hoffmann-La Roche Ltd and its affiliated company Genentech, Inc.; Fujirebio; GE Healthcare; IXICO Ltd.; Janssen Alzheimer Immunotherapy Research & Development, LLC.; Johnson & Johnson Pharmaceutical Research & Development, LLC.; Medpace, Inc.; Merck & Co., Inc.; Meso Scale Diagnostics, LLC.; NeuroRx Research; Neurotrack Technologies; Novartis Pharmaceuticals Corporation; Pfizer Inc.; Piramal Imaging; Servier; Synarc Inc.; and Takeda Pharmaceutical Company. The Canadian Institutes of Health Research is providing funds to support ADNI clinical sites in Canada. Private sector contributions are facilitated by the Foundation for the National Institutes of Health (www.fnih.org). The grantee organization is the Northern California Institute for Research and Education, and the study is coordinated by the Alzheimer’s Disease Cooperative Study at the University of California, San Diego. ADNI data are disseminated by the Laboratory for Neuro Imaging at the University of Southern California.

References

- Ad-Dabbagh, Y., Einarson, D., Lyttelton, O., Muehlboeck, J.-S., Mok, K., Ivanov, O., et al. (2006). “The CIVET image-processing environment: a fully automated comprehensive pipeline for anatomical neuroimaging research,” in *Proceedings of the 12th Annual Meeting of the Organization for Human Brain Mapping*. (Florence).
- Bailey, D., Barrio, R., and Borwein, J. (2012). High-precision computation: mathematical physics and dynamics. *Appl. Math. Comput.* 218, 10106–10121. doi: 10.1016/j.amc.2012.03.087
- Beckmann, C. F., and Smith, S. M. (2004). Probabilistic independent component analysis for functional magnetic resonance imaging. *IEEE Trans. Med. Imaging* 23, 137–152. doi: 10.1109/TMI.2003.822821
- Dice, L. (1945). Measures of the amount of ecologic association between species. *Ecology* 26, 297–302. doi: 10.2307/1932409
- Fischl, B. (2012). FreeSurfer. *Neuroimage* 62, 774–781. doi: 10.1016/j.neuroimage.2012.01.021
- ¹³<http://www.computecanada.ca>
- ¹⁴<http://www.calculquebec.ca>

- Glatard, T., Rousseau, M., Rioux, P., Adalat, R., and Evans, A. C. (2014). "Controlling the deployment of virtual machines on clusters and clouds for scientific computing in CBRAIN," in *14th IEEE/ACM International Symposium on Cluster, Cloud and Grid Computing* (Chicago), 384–393.
- Gronenschild, E. H. B. M., Habets, P., Jacobs, H. I. L., Mengelers, R., Rozendaal, N., van Os, J., et al. (2012). The effects of FreeSurfer version, workstation type, and Macintosh operating system version on anatomical volume and cortical thickness measurements. *PLoS ONE* 7:e38234. doi: 10.1371/journal.pone.0038234
- Halchenko, Y. O., and Hanke, M. (2012). Open is not enough. Let's take the next step: an integrated, community-driven computing platform for neuroscience. *Front. Neuroinform.* 6:22. doi: 10.3389/fninf.2012.00022
- Hanke, M., and Halchenko, Y. O. (2011). Neuroscience Runs on GNU/Linux. *Front. Neuroinform.* 5:8. doi: 10.3389/fninf.2011.00008
- Jenkinson, M., Beckmann, C. F., Behrens, T. E. J., Woolrich, M. W., and Smith, S. M. (2012). FSL. *Neuroimage* 62, 782–790. doi: 10.1016/j.neuroimage.2011.09.015
- Krefting, D., Scheel, M., Freing, A., Specovius, S., Paul, F., and Brandt, A. (2011). "Reliability of quantitative neuroimage analysis using freesurfer in distributed environments," in *MICCAI Workshop on High-Performance and Distributed Computing for Medical Imaging*. (Toronto, ON).
- Mazziotta, J., Toga, A., Evans, A., Fox, P., Lancaster, J., Zilles, K., et al. (2001). A probabilistic atlas and reference system for the human brain: international Consortium for Brain Mapping (ICBM). *Philos. Trans. R. Soc. Lond. Ser. B Biol. Sci.* 356, 1293–1322. doi: 10.1098/rstb.2001.0915
- Minka, T. (2000). *Automatic Choice of Dimensionality for PCA*. Technical report, Technical Report 514, MIT Media Lab Vision and Modeling Group.
- Patenaude, B., Smith, S. M., Kennedy, D. N., and Jenkinson, M. (2011). A Bayesian model of shape and appearance for subcortical brain segmentation. *Neuroimage* 56, 907–922. doi: 10.1016/j.neuroimage.2011.02.046
- Sherif, T., Rioux, P., Rousseau, M.-E., Kassis, N., Beck, N., Glatard, T., et al. (2014). CBRAIN: a web-based, distributed computing platform for collaborative neuroimaging research. *Front. Neurosci.* 8:54. doi: 10.3389/fninf.2014.00054
- Smith, S. M. (2002). Fast robust automated brain extraction. *Hum. Brain Mapp.* 17, 143–155. doi: 10.1002/hbm.10062
- Worsley, K., Taylor, J., Carbonell, F., Chung, M., Duerden, E., Bernhardt, B., et al. (2009). SurfStat: a matlab toolbox for the statistical analysis of univariate and multivariate surface and volumetric data using linear mixed effects models and random field theory. *Neuroimage* 47, S102. doi: 10.1016/S1053-8119(09)70882-1
- Zhang, Y., Brady, M., and Smith, S. (2001). Segmentation of brain MR images through a hidden Markov random field model and the expectation-maximization algorithm. *IEEE Trans. Med. Imaging* 20, 45–57. doi: 10.1109/42.906424

Conflict of Interest Statement: The authors declare that the research was conducted in the absence of any commercial or financial relationships that could be construed as a potential conflict of interest.

Copyright © 2015 Glatard, Lewis, Ferreira da Silva, Adalat, Beck, Lepage, Rioux, Rousseau, Sherif, Deelman, Khalili-Mahani and Evans. This is an open-access article distributed under the terms of the Creative Commons Attribution License (CC BY). The use, distribution or reproduction in other forums is permitted, provided the original author(s) or licensor are credited and that the original publication in this journal is cited, in accordance with accepted academic practice. No use, distribution or reproduction is permitted which does not comply with these terms.