



**HAL**  
open science

## **Cognitive and cortical plasticity deficits correlate with altered amyloid- $\beta$ CSF levels in Multiple Sclerosis**

Francesco Mori, Silvia Rossi, Giulia Sancesario, Claudia Codecà, Giorgia Mataluni, Fabrizia Monteleone, Fabio Buttari, Hajime Kusayanagi, Maura Castelli, Caterina Motta, et al.

### ► **To cite this version:**

Francesco Mori, Silvia Rossi, Giulia Sancesario, Claudia Codecà, Giorgia Mataluni, et al.. Cognitive and cortical plasticity deficits correlate with altered amyloid- $\beta$  CSF levels in Multiple Sclerosis. *Neuropsychopharmacology*, 2010, 10.1038/npp.2010.187 . hal-00585468

**HAL Id: hal-00585468**

**<https://hal.science/hal-00585468>**

Submitted on 13 Apr 2011

**HAL** is a multi-disciplinary open access archive for the deposit and dissemination of scientific research documents, whether they are published or not. The documents may come from teaching and research institutions in France or abroad, or from public or private research centers.

L'archive ouverte pluridisciplinaire **HAL**, est destinée au dépôt et à la diffusion de documents scientifiques de niveau recherche, publiés ou non, émanant des établissements d'enseignement et de recherche français ou étrangers, des laboratoires publics ou privés.

# **Cognitive and cortical plasticity deficits correlate with altered amyloid- $\beta$ CSF levels in Multiple Sclerosis**

Francesco Mori<sup>1,2</sup>, Silvia Rossi<sup>1,2</sup>, Giulia Sancesario<sup>3,4</sup>, Claudia Codecà<sup>1,2</sup>, Giorgia Mataluni<sup>1,2</sup>, Fabrizia Monteleone<sup>1,2</sup>, Fabio Buttari<sup>1,2</sup>, Hajime Kusayanagi<sup>1,2</sup>, Maura Castelli<sup>1,2</sup>, Caterina Motta<sup>1,2</sup>, Valeria Studer<sup>1,2</sup>, Giorgio Bernardi<sup>1,2</sup>, Giacomo Koch<sup>1,2</sup>, Sergio Bernardini<sup>3,4</sup>, Diego Centonze<sup>1,2</sup>

<sup>1</sup>Clinica Neurologica, Dipartimento di Neuroscienze, Università Tor Vergata, 00133 Rome, Italy

<sup>2</sup>Centro Europeo per la Ricerca sul Cervello (CERC)/Fondazione Santa Lucia, 00143 Rome, Italy

<sup>3</sup>Dipartimento di Medicina Interna, Università Tor Vergata, Rome, 00133 Italy

<sup>4</sup>UOC Biologia Molecolare Clinica, Dipartimento di Medicina di Laboratorio, Policlinico Tor Vergata, 00143 Rome, Italy

**Abbreviated title:** *Amyloid- $\beta$  and cognition in MS*

Number of figures: 5

Number of tables: 0

Number of pages: 32

Number of words for Abstract: 241 (max 250)

Number of words for Introduction: 597 (max 750)

Number of words for Materials and Methods: 1476 (max 1500)

Number of words for Discussion: 1444 (max 1500)

## **Author for correspondence:**

Diego Centonze, Clinica Neurologica, Dipartimento di Neuroscienze, Università Tor Vergata, Via Montpellier 1, 00133 Rome, Italy. Tel. +39-06-7259-6010; Fax: +39-06-7259-6006; Email: **centonze@uniroma2.it**

## **ABSTRACT**

Cognitive dysfunction is of frequent observation in Multiple Sclerosis (MS). It is associated with grey matter pathology, brain atrophy and altered connectivity, and recent evidence showed that acute inflammation can exacerbate mental deficits independently of the primary functional system involved.

In the present study, we measured cerebrospinal fluid (CSF) levels of amyloid- $\beta_{1-42}$  and tau protein in MS and in Clinical Isolated Syndrome (CIS) patients, since both proteins have been associated with cognitive decline in Alzheimer's disease (AD). In AD, amyloid- $\beta_{1-42}$  accumulates in the brain as insoluble extracellular plaques, possible explaining why soluble amyloid- $\beta_{1-42}$  is reduced in the CSF of these patients. In our sample of MS patients, amyloid- $\beta_{1-42}$  levels were significantly lower in patients cognitively impaired and were inversely correlated with the number of Gadolinium-enhancing (Gd<sup>+</sup>) lesions at the magnetic resonance imaging (MRI). Positive correlations between amyloid- $\beta_{1-42}$  levels and measures of attention and concentration were also found. Furthermore, abnormal neuroplasticity of the cerebral cortex, explored with theta burst magnetic stimulation (TBS), was observed in cognitively impaired patients, and a positive correlation was found between amyloid- $\beta_{1-42}$  CSF contents and the magnitude of long-term potentiation (LTP)-like effects induced by TBS. No correlation was conversely found between tau protein concentrations and MRI findings, cognitive parameters, and TBS effects in these patients.

Together, our results indicate that in MS central inflammation is able to alter amyloid- $\beta$  metabolism, by reducing its concentration in the CSF, and leading to impairment of synaptic plasticity and cognitive function.

**Key words:** cognition, inflammation, LTP, tau protein, transcranial magnetic stimulation

## INTRODUCTION

Multiple Sclerosis (MS) causes cognitive deficits since the early stages of the disease, by altering memory, attention and executive functions (Amato *et al*, 2004, 2006a, 2008a,b; Chiaravalloti and DeLuca, 2008; Genova *et al*, 2009).

The synaptic and molecular mechanisms at the basis of cognitive impairment in MS are still poorly understood. A large body of evidence converges in indicating that learning and memory processes are encoded in brain circuits as experience- and activity-dependent long-term synaptic changes. In particular, long-term potentiation (LTP) is a form of synaptic plasticity in which repeated stimulation connects neurons by making synapses more responsive to future activation, and is commonly considered a major candidate for representing the substrate of learning and memory processes (Bliss and Collingridge, 1993; Malenka, 2003).

LTP induction is regulated by a variety of factors, able to interfere with critical receptor and post-receptor events at excitatory synapses (Bliss and Collingridge, 1993; Malenka, 2003; Feldman, 2009; Kessels and Malinow, 2009; Minichiello, 2009). Among these factors, amyloid- $\beta$ , particularly the isoform amyloid- $\beta_{1-42}$ , that was consistently found to be reduced in the cerebrospinal fluid (CSF) of Alzheimer's disease (AD) patients, plays a major role in LTP deficits and cognitive impairment in AD. More specifically, amyloid- $\beta_{1-42}$ , aggregates in oligomers that impair synaptic plasticity mechanisms (Klyubin *et al*, 2005; Shankar *et al*, 2008; Walther *et al*, 2009; Townsend *et al*, 2010). Its role in other disorders associated with mental deterioration is however still unclear.

Amyloid- $\beta$  peptides are formed by proteolytic cleavage of a transmembrane protein, the amyloid precursor protein (APP) by  $\beta$ -site APP-cleaving enzyme 1 (BACE). BACE cleaves APP, causing the secretion of an extracellular soluble fragment of APP, termed sAPP- $\beta$ , and the retention of a 99 residue C-terminal fragment. This fragment can undergo further cleavage by  $\gamma$ -secretase to release 40 or 42 amino acid long amyloid- $\beta$  fragments into the cytoplasm. However, APP may undergo at least two and most likely several different processing pathways. In the non-amyloidogenic pathway,

APP is cleaved at the  $\alpha$ -site in the middle of the amyloid- $\beta$  domain. This cleavage obliterates amyloid- $\beta$  formation, instead yielding an N-terminal sAPP- $\alpha$  fragment (Andreasson *et al*, 2007).

We postulated that, in MS, acute inflammation is able to interfere with amyloid- $\beta_{1-42}$  or tau metabolism, and that, like in AD, this abnormal metabolism could be associated with cognitive dysfunction and synaptic plasticity. Notably, although both amyloid- $\beta_{1-42}$  and tau protein alter LTP induction and cognitive performances in animal models (Oddo *et al*, 2003; Klyubin *et al*, 2005; Rosenmann *et al*, 2008; Shankar *et al*, 2008; Polydoro *et al*, 2009; Walther *et al*, 2009; Townsend *et al*, 2010), their role in human synaptic plasticity has never been explored.

In humans, LTP can be explored in a safe and non-invasive manner by using paradigms of repetitive transcranial magnetic stimulation (rTMS) (Ziemann, 2004; Cooke and Bliss, 2006; Di Lazzaro *et al*, 2008). A novel LTP-inducing protocol has been recently developed, in the attempt to mimic the physiological activity of hippocampal neurons during learning episodes (Huang *et al*, 2005; Di Lazzaro *et al*, 2008). This new protocol has been termed theta burst stimulation (TBS) and, according to *in vitro* experiments in hippocampal preparations, it produces a NMDA receptor-dependent LTP in the human cortex, by enhancing corticospinal excitability for several minutes after the end of the stimulation (Huang *et al*, 2005).

Thus, in the current study we investigated whether altered CSF concentrations of amyloid- $\beta_{1-42}$  metabolism are associated with abnormal patterns of cognitive performances and of cortical plasticity in a sample of MS patients that were submitted to an extensive neuropsychological examination and to neurophysiological investigations of cortical plasticity by means of TBS.

## **SUBJECTS AND METHODS**

The study was approved by the Ethics Committee of the University Hospital Tor Vergata, Rome.

Abbreviations used throughout the text are provided in the Supplementary Text.

### ***MS patients***

We collected CSF from 42 patients (30 females and 12 males, aged 23-54 years), admitted to the neurological clinic of the University Hospital Tor Vergata of Rome, and later diagnosed as suffering from clinically isolated syndrome (CIS) (n=7), relapsing-remitting (RR) MS (n=30), or primary progressive (PP) MS (n=5). After their admittance, all patients underwent, in sequence, brain (and in selected cases also spinal) magnetic resonance imaging (MRI) scan, neuropsychological assessment, TMS and CSF withdrawal within 24 hours. Corticosteroids or other MS-specific immunoactive therapies were initiated later when appropriate.

The diagnosis of CIS or MS was established by clinical, laboratory and MRI parameters, and matched published criteria (McDonald *et al*, 2001; Polman *et al*, 2005). In all instances, patients underwent detection of oligoclonal banding in the CSF (positive in 92% of cases). Expanded Disability Status Scale (EDSS) scores were between 0 and 5.

As controls, we used CSF from 12 age- and gender-matched individuals (8 females and 4 males, aged 25-52 years) without inflammatory or degenerative diseases of the central or peripheral nervous system. These subjects underwent lumbar puncture because of a clinical suspect of acute peripheral neuropathy, meningitis, or subarachnoidal hemorrhage, which were not confirmed. All the subjects gave their written informed consent to the study.

### ***MRI acquisition and analysis***

Three Tesla MRI scan consisted of dual-echo proton density, FLAIR, T2-weighted spin-echo images and pre-contrast and post-contrast T1-weighted spin-echo images. All images were acquired in the axial orientation with 3 mm-thick contiguous slices. T2 lesion volume was determined by manual tracing and the number of gadolinium-enhancing (Gd+) (0.2 ml/Kg e.v.) lesions was counted by a neuroradiologist who was unaware of the patient's clinical details (Centonze *et al*, 2007).

### ***CSF determination of amyloid- $\beta_{1-42}$ and total tau***

Immediately after its collection, CSF was centrifuged to eliminate cells and cellular debris and stored at  $-80^{\circ}\text{C}$  until analyzed (Centonze *et al*, 2007). Levels of both amyloid- $\beta_{1-42}$  and total tau were determined according to standard procedures, using commercially available sandwich enzyme-linked immunosorbent assays (Innotest  $\beta$ -Amyloid 1-42, Innotest h-tau Ag, Innogenetics, Ghent, Belgium) (Sancesario *et al*, 2010). Briefly, 25  $\mu\text{l}$  of the CSF from each patient were dispensed into corresponding 96-well ELISA plates, pre-coated either with the monoclonal antibody 21F12 for amyloid- $\beta_{1-42}$ , or AT120 for total tau, and incubated respectively with the biotinylated antibody 3D6 or HT7. Bound antibodies were then detected by a peroxidase-labeled streptavidin, after addition of a substrate solution. The reaction was stopped by sulphuric acid. The absorbance of the reaction product was read at 450 nm. The biomarker concentrations in the samples were calculated based on the amyloid- $\beta_{1-42}$  and tau standard sigmoid curve equation.

### ***Neuropsychological assessment***

Cognitive functions were assessed through the Brief Repeatable Neuropsychological Battery (BRB) (Rao, 1990) by an expert trained clinician in a subgroup of 21 MS patients (4 CIS and 17 RR MS) who gave consent to the examination. The BRB assesses the cognitive domains most frequently impaired in MS (Amato *et al*, 2004), and incorporates tests of verbal memory (Selective Reminding Test [SRT]); visual memory (10/36 Spatial Recall Test); attention, concentration, and speed of information processing (Paced Auditory Serial Addition Test [PASAT], Symbol Digit Modalities Test [SDMT]); and verbal fluency (Word List Generation). Performance on each test of the BRB was assessed by applying the available Italian normative values (Amato *et al*, 2006b). Failure of a test was defined when the score was at least 2 standard deviations below the mean normative values.

Consistently with previous works (Amato *et al*, 2006a, 2008b), those patients who failed at least three tests were considered cognitively impaired (CI), and those who failed less than three tests

were considered cognitively preserved (CP). No subjects were taking psychoactive drugs or substances that might interfere with neuropsychological performance.

### ***TMS***

TMS protocols were performed in a subgroup of 30 MS patients (5 CIS, 23 RR MS and 2 PP MS) who gave consent to the examination and were asymptomatic in the upper right limb. Electromyographic (EMG) traces were recorded from the right first dorsal interosseus muscle (FDI) with surface cup electrodes. The active electrode was placed over the muscle belly and the reference electrode over the metacarpophalangeal joint of the index finger. Responses were amplified with a Digitimer D360 amplifier (Digitimer, Welwyn Garden City, Hertfordshire, United Kingdom) through filters set at 20 Hz and 2 kHz with a sampling rate of 5 kHz, then recorded by a computer with SIGNAL software (Cambridge Electronic Devices, Cambridge, United Kingdom).

MEPs were evoked through a figure-of-eight coil with external loop diameter of 70 mm connected to a Magstim 200<sup>2</sup> magnetic stimulator (Magstim Company, Whitland, Wales, UK). Coil position was adjusted to find the optimal scalp site to evoke motor responses in the contralateral FDI, the motor “hot spot”, at the beginning of each experimental session and marked over the patients scalp with a pencil. The coil was held tangentially to the scalp surface with the handle pointing posteriorly and laterally at about 45° with respect to the mid-sagittal axis of the head.

### ***iTBS***

Intermittent TBS (iTBS) was delivered over the motor “hot spot” of the right FDI through a Magstim Rapid<sup>2</sup> stimulator. The active motor threshold (AMT) was defined as the minimum stimulation intensity required to evoke a liminal motor potential from the FDI during voluntary contraction (about 200  $\mu$ V in 50% of 10 trials). Stimulation intensity was 80% of AMT. The iTBS protocol consisted of 10 bursts, each burst composed of three stimuli at 50 Hz, repeated at a theta frequency of 5 Hz every 10 s for a total of 600 stimuli (200 s). Sixty MEPs were collected before



iTBS (baseline) and at two different time points (0 and 15 minutes) after the end of iTBS. Stimulation intensity was set to induce a stable MEP of approximately 1 mV peak to peak amplitude in the relaxed right FDI at baseline and remained unchanged until end of recordings. MEP's amplitudes were then averaged at each time point and normalized to the mean baseline amplitude.

### *Intracortical circuits in right M1*

We also tested, through paired-pulse (pp) TMS, short interval intracortical inhibition (SICI, mediated by intrinsic GABAergic circuits) (Kujirai *et al*, 1993), intracortical facilitation (ICF, believed to follow the preferential recruitment of intrinsic excitatory fibers) (Kujirai *et al*, 1993), short intracortical facilitation (SICF, likely mediated by excitatory cortical interneurons) (Ziemann *et al*, 1998), and long interval intracortical inhibition (LICI, mediated by local GABAB pathways) (Valls-Solé *et al*, 1992) of the left M1. One figure of eight coil, external diameter 70 mm was held tangentially to the scalp over the motor "hot spot" for right FDI muscle. Stimulation intensity for TS was adjusted in each experiment to evoke a MEP of approximately 1 mV peak to peak amplitude in the relaxed right FDI.

SICI and ICF were tested using ppTMS with a subthreshold CS preceding a suprathreshold TS (Kujirai *et al*, 1993; Rothwell, 1997). CS stimulus was set at 80% AMT. Three conditions were presented in a random order: control (TS given alone) and two pp conditions (TS preceded by CS) at one of two different ISI (2 and 10 ms).

For SICF, the intensity of CS was set to 90% RMT. Six randomly intermixed conditions were presented in a random order: TS given alone and five conditions with the TS followed by CS at one of five different ISI (1.5, 2.1, 2.7, 3.7, 4.5 ms) (Hanajima *et al*, 2002).

For LICI the intensity of CS was set at 120% RMT. Two conditions were presented in a random order: control (TS given alone) and one paired-pulse condition (TS preceded by CS) at 100 ms ISI (Valls-Solé *et al*, 1992). For each experiment ten responses were collected for the test stimulus

alone and for conditioned MEPs at each ISI. Changes in MEP amplitude at each ISI were expressed as percentage of the mean unconditioned MEP amplitude.

### ***Data analysis***

Differences in tau and amyloid- $\beta_{1-42}$  CSF levels were assessed using analysis of variance, followed by post-hoc comparison using the Tukey highest significant difference procedure, to account for multiple comparisons and by T Test or Mann–Whitney test for comparisons between two groups. Relationships between tau and amyloid- $\beta_{1-42}$  CSF levels and MRI findings were assessed using Spearman correlation test for nonparametric values and Pearson's correlation test for parametric values. Correlation analysis between amyloid- $\beta_{1-42}$  CSF levels and cognitive variables was performed by calculating Spearman correlation coefficients.

Correlations between tau and amyloid- $\beta_{1-42}$  CSF levels with iTBS at each timepoint, SICI, ICF, LICI and SICF at each ISI were calculated using Pearson's correlation coefficient. Differences between groups were assessed using repeated measures analysis of variance for iTBS, SICF, SICI, ICF and LICI. Bonferroni correction was used to correct for multiple comparisons. Data, expressed as mean  $\pm$  SEM, were considered significant at the 0.05 level.

## **RESULTS**

### *CSF contents of amyloid- $\beta_{1-42}$ and total tau protein in MS patients and their correlation with neuropsychological parameters*

We first measured amyloid- $\beta_{1-42}$  and tau protein levels in the CSF of MS patients. Amyloid- $\beta_{1-42}$  levels were significantly reduced in the population of MS subjects, compared to control individuals (MS group: 267 $\pm$ 22 pg/ml, n = 42; control group: 390 $\pm$ 45 pg/ml, n = 12, p < 0.05) (Fig. 1A). Conversely, tau protein levels were not altered in the CSF of MS patients (MS group: 128 $\pm$ 11 pg/ml, n = 42; control group: 143 $\pm$ 14 pg/ml, n = 12, NS) (Fig. 1B).

MS patients were, then, classified as cognitively impaired (CI, n = 11) or cognitively preserved (CP, n = 10) on the basis of their neuropsychological performance, without differences in terms of demographic characteristics (CI: 7 females and 4 males, aged 25-40 years with  $11 \pm 7$  years of education; CP: 6 females and 4 males, aged 23-37 years with  $11 \pm 3$  years of education).

The reduction of amyloid- $\beta_{1-42}$  levels was related to cognitive dysfunction (CI MS group:  $145 \pm 25$  pg/ml, n=11; CP MS group:  $297 \pm 46$  pg/ml, n=10; control group:  $390 \pm 45$  pg/ml, n = 12;  $F = 9.81$ ,  $p = 0.0005$ ), since in CP MS amyloid- $\beta_{1-42}$  levels were higher than in CI MS patients ( $p < 0.05$ ), and indistinguishable from controls (NS) (Fig. 1C). In CI MS patients, tau protein CSF levels were conversely still indistinguishable from those measured in controls and in CP patients (CI MS group:  $110 \pm 18$  pg/ml, CP MS group:  $176 \pm 37$  pg/ml, control group:  $143 \pm 14$  pg/ml,  $F = 2.22$ ,  $p = 0.12$ ) (Fig. 1D).

The most frequently failed tests by examined MS patients were those assessing sustained attention and concentration (SDMT, PASAT) and verbal memory (SRT-LTS, SRT-CLTR). Interestingly, a moderate positive correlation was found between amyloid- $\beta_{1-42}$  CSF levels and scores on measures of attention/concentration (SDMT: n = 21,  $r = 0.51$ ,  $p = 0.02$ ; PASAT: n = 21,  $r = 0.54$ ,  $p = 0.01$ ) (Fig. 1E, F). The scores on verbal memory tests were, conversely, not significantly related to amyloid- $\beta$  contents (SRT-LTS: n = 21,  $r = -0.08$ ,  $p = 0.61$ ; SRT-CLTR: n = 21,  $r = -0.11$ ,  $p = 0.58$ ).

None of the neuropsychological measurements correlated to tau CSF levels in MS patients (n = 21,  $p = \text{NS}$  for all parameters, not shown).

Since pathology of corpus callosum (CC) may play a major role in cognitive impairment of MS patients (Ozturk et al, 2010), we further compared scores in all neuropsychological tests between patients showing lesions within the CC (n=6) and patients without CC lesions (n=15) at conventional MRI. Comparison of neuropsychological scores between CIS and RRMS was also performed. No significant differences emerged between groups (n = 21, all  $p = \text{NS}$ ) (not shown).

### *Correlation between amyloid- $\beta_{1-42}$ and total tau protein with Gd+ lesions in MS patients*

Upon grouping of MS patients according to the presence of Gd+ lesions at the MRI (Gd+ MS group: n = 22 (14 patients complaining new symptoms since 10 days or less), Gd- MS group: n = 20 (4 patients with new symptoms since 10 days or less), control group: n = 12, F = 7.98, p = 0.0009), amyloid- $\beta_{1-42}$  levels were lower in Gd+ MS patients (209±26 pg/ml) than in both Gd- MS patients (331±25 pg/ml, p < 0.05) and in controls (390±45 pg/ml, p < 0.01) (Fig. 2A). No significant alteration of tau protein CSF content was revealed by grouping Gd- and Gd+ patients (Gd+ MS group: 129±11 pg/ml, Gd- MS group: 124±20 pg/ml, control group: 143±14 pg/ml F = 0.3, p = 0.74) (Fig. 2B).

These results might indicate that acute brain inflammation is associated with alterations of amyloid- $\beta$  metabolism, leading to decreased CSF detection of this biologically active peptide. We further explored this possibility by correlating both amyloid- $\beta_{1-42}$  and tau protein levels with the number of Gd+ lesions seen at the MRI. These analyses uncovered a significant negative correlation between amyloid- $\beta_{1-42}$  content and Gd+ lesions (n = 22, r = - 0.45, p = 0.03) (Fig. 2C), while no correlation was seen between amyloid- $\beta_{1-42}$  and total lesion load in T2 MRI sequences (n = 42, r = 0.06, p = 0.69) (Fig. 2D). No correlation was also found between tau levels in the CSF of MS patients and both Gd+ lesions (n = 22, r = - 0.21, p = 0.34) and T2 lesion load (n = 42, r = - 0.08, p = 0.57) (Fig. 2E,F).

### *Correlation between TBS-induced LTP with amyloid- $\beta_{1-42}$ and total tau levels in MS patients*

Amyloid- $\beta$  dimers isolated from AD brains completely block LTP induction in the rodent hippocampus, and consequently cause cognitive defects (Shankar *et al*, 2008). In an attempt to see if also in MS brains amyloid- $\beta_{1-42}$  is able to alter LTP induction, we explored whether any correlation could be uncovered between CSF content of amyloid- $\beta_{1-42}$  and the magnitude of LTP induced in MS patients with TBS. A significant positive correlation was found between the

magnitude of LTP measured 15 min after the TBS protocol and the levels of amyloid- $\beta_{1-42}$  in the CSF ( $r = 0.48$ ,  $p = 0.007$ ), a finding which may suggest that also in MS, as in AD, reduced CSF contents of amyloid- $\beta_{1-42}$  may be associated with defective memory-related synaptic plasticity (Fig. 3A,B).

#### *Correlation between neuropsychological assessments and TBS- induced LTP*

To investigate whether cognitive impairment was associated with reduced cortical LTP in MS subjects, we compared the mean percentage values of peak to peak MEP amplitudes before and after TBS in CI and CP MS patients. A repeated measures ANOVA with TIME (3 levels: baseline, 0 and 15 min post TBS) as within subjects and GROUP (2 levels: CI and CP) as between subjects main factors showed a significant effect of time ( $F = 8.04$ ,  $p = 0.002$ ), a significant effect of GROUP ( $F = 6.82$ ,  $p = 0.023$ ) and a significant TIME x GROUP interaction ( $F = 5.96$ ,  $p = 0.031$ ). At post-hoc contrasts CI patients showed a lower effect of TBS at both timepoints (0 minutes post TBS:  $1.09 \pm 0.14$ ; 15 minutes post:  $1.18 \pm 0.12$ ; all  $p < 0.05$ ) compared to CP patients (0 minutes post TBS:  $1.67 \pm 0.16$ ; 15 minutes post:  $1.71 \pm 0.16$ ) (Fig. 4). We also performed a T-Test for independent data on the peak effect of TBS represented by the post TBS time-point with the highest mean MEP amplitude. A significantly lower peak effect of TBS in CI ( $n = 10$ , mean  $\pm$  SE =  $1.39 \pm 0.15$ ) compared to CP ( $n = 10$ , mean  $\pm$  SE =  $2.32 \pm 0.23$ ) MS patients ( $p = 0.008$ ) was observed (not shown). These findings, showing a lower effect of TBS in CI patients, are in line with previous observations that rTMS has an altered effect in AD patients (Inghilleri *et al*, 2006; Battaglia *et al*, 2007) and show for the first time that cognitive impairment in MS patients is paralleled by an alteration of NMDAR dependent synaptic plasticity.

Comparison of TBS effect between CIS, RRMS and PPMS did not show any significant difference.

#### *Role of amyloid- $\beta_{1-42}$ in the modulation of excitatory and inhibitory synaptic transmission in MS*

LTP is a complex phenomenon, and changes in glutamate-mediated synaptic drive or GABA-mediated inhibition alter its induction. Accordingly, blockade of NMDA glutamate receptors prevents LTP (Bliss and Collingridge, 1993; Cooke and Bliss, 2006), as also does the enhancement of GABA-mediated inhibition (Matsuyama *et al*, 2008; Gong *et al*, 2009; Pan *et al*, 2009). Thus, we tried to investigate whether amyloid- $\beta_{1-42}$ -mediated inhibition of LTP could be secondary to impaired basal synaptic transmission in cortical neurons of MS patients. In ppTMS experiments, however, we found that the degree of SICI, ICF, SICF, and LICI was not related to the CSF levels of amyloid- $\beta_{1-42}$  in MS patients, suggesting that this protein affects synaptic plasticity but not basal excitatory or inhibitory transmission (Fig. 5). Comparisons between CI and CP MS patients also did not reveal any significant difference (not shown).

## **DISCUSSION**

Grey matter pathology, brain atrophy, and loss of anatomical connectivity are the most accredited determinants of progressive cognitive decline in MS (Calabrese *et al*, 2009, Calabrese *et al*, 2010; Staff *et al*, 2009; Tiemann *et al*, 2009). Acute and reversible mental deterioration also occurs during clinical relapses, independently of the primary functional system involved (Foong *et al*, 1998). The presence of Gd<sup>+</sup> lesions at the brain MRI also correlates with poor cognitive performance in asymptomatic and symptomatic MS patients (Foong *et al*, 1998; Bellmann-Strobl *et al*, 2009), suggesting that focal inflammation is able to diffusely disrupt the neuronal substrate of information processing, leading to acute cognitive impairment. Given that amyloid- $\beta_{1-42}$  metabolism is regulated by inflammation (Griffin *et al*, 2006; Hickman *et al*, 2008; Schmidt *et al*, 2008) a recent study performed in a large sample of subjects, reported that in MS patients there is an overall decrease of CSF amyloid- $\beta_{1-42}$  in comparison with healthy controls (Mattsson *et al*, 2009). These results seem to indicate that in MS there could be an altered expression of amyloid- $\beta_{1-42}$ , possibly related to the underlying inflammatory processes.

The present study shows that during the inflammatory phase of MS, amyloid- $\beta_{1-42}$  metabolism is altered leading to its reduced detection in the CSF. We found, in fact, that amyloid- $\beta_{1-42}$  levels were significantly lower in subjects with Gd<sup>+</sup> lesions at the MRI. Interestingly, these findings are in good agreement with previous studies showing that IL-1 $\beta$ , an important pro-inflammatory cytokine, alters amyloid- $\beta$  metabolism in the cerebral cortex, increasing APP levels in rat brain homogenate (Fan *et al*, 2009). There is no information, conversely, about IL-1 $\beta$  effect on CSF amyloid  $\beta_{1-42}$  levels. However, inflammation increases BACE activity (Hong *et al*, 2003), and BACE activity levels were found to be higher in patients with low amyloid  $\beta_{1-42}$  levels in the CSF (Mulder *et al*, 2010). Anti-inflammatory cytokines, on the other hand, enhance the activity of amyloid- $\beta$  degrading enzymes, thus favouring amyloid- $\beta$  tissue deposit clearance (Shimizu *et al*, 2008).

The present study shows, for the first time, a difference in cognitive profile of MS patients related to CSF levels of amyloid- $\beta_{1-42}$ . Interestingly, the cognitive domains that seemed to be affected in association with low amyloid- $\beta$  CSF levels were those regarding attention, concentration and information-processing speed, the same influenced by the presence of radiological disease activity (Bellmann-Strobl *et al*, 2009). Gd enhancement has been associated with poor PASAT performance in otherwise physically stable MS patients (Bellmann-Strobl *et al*, 2009) and to CSF amyloid- $\beta_{1-42}$  levels (present work), in line with the idea that CSF amyloid- $\beta_{1-42}$  expression, altered by brain inflammation, may cause a diffuse impairment of cerebral connectivity with a negative impact on cognitive functioning. Conversely, neuropsychological test scores examining memory did not correlate with amyloid- $\beta_{1-42}$  levels.

Cortical atrophy was not measured in the present study since imaging was performed for clinical purposes, thus only conventional MRI scans were collected. However CSF tau levels, already reported to be associated with neurodegenerative damage (Vemuri *et al*, 2009; Ghoshal *et al*, 2002) were found to be normal in our patients. A further limitation of the present study may be represented by anxiety, due to diagnosis communication or expectancy for the disease. Anxiety is

known to influence the performance in the neuropsychological tests (Peretti, 1998; Tombaugh, 2006), especially those addressing concentration and attention. However, all participants were diagnosed as suffering from CIS or MS during hospitalization, and diagnosis was communicated after all data collection.

The synaptotoxic properties of amyloid- $\beta_{1-42}$  have long been recognized, as well as its ability to interfere with LTP and with cognitive abilities (Klyubin *et al*, 2005; Battaglia *et al*, 2007; Shankar *et al*, 2008; Nygaard *et al*, 2009; Walther *et al*, 2009; Townsend *et al*, 2010). A recent study, reported that amyloid- $\beta$  dimers isolated from AD patients can impair hippocampal LTP and memory in mice, and induce dendritic spine retraction in neurons (Shankar *et al*, 2008). Of note, while the role of amyloid- $\beta$  in LTP disruption has been demonstrated in a variety of experimental models of AD (Klyubin *et al*, 2005; Battaglia *et al*, 2007; Shankar *et al*, 2008; Walther *et al*, 2009; Townsend *et al*, 2010), its correlates with LTP measured in humans have never been demonstrated before. Thus, the correlation between amyloid- $\beta_{1-42}$  CSF levels and LTP amplitude reported in the present study is a first indication that amyloid- $\beta$  is a potent regulator of synaptic plasticity also in the human brain, with potentially relevant consequences for understanding the mechanisms of cognitive deficits not only in MS subjects but also in other neurological disorders, obviously including AD. Importantly, although both altered cognitive performances and LTP induction was found in mice overexpressing tau protein (Polydoro *et al*, 2009), tau levels did not correlate with TBS-induced LTP amplitude in MS patients (Fig. 3C,D). In this respect, it is noteworthy that only LTP induced by high-frequency stimulation but not that induced by TBS was altered in mice overexpressing tau (Polydoro *et al*, 2009).

Previous investigations found that in MS patients SICI was lower in secondary progressive MS (SPMS) in comparison with RRMS patients in the remitting phase, and that SICI correlated significantly with EDSS scores (Conte *et al*, 2009). These results are in apparent contrast with our findings. However our study group did not include patients with SPMS and the mean age and disease duration of these patients (age:  $51 \pm 0$ , disease duration:  $21.0 \pm 2$ ) are also very different in



comparison with our study group (age:  $34.3 \pm 1.4$  years, disease duration:  $2.7 \pm 0.8$  years). Other investigators found that fatigue in MS is associated with lower SICI compared to MS patients without fatigue and healthy subjects (Liepert *et al*, 2005). In our study group only very few patients complained fatigue and also in this case our group differed in terms of mean age ( $41.4 \pm 4.75$  years). Moreover one of the inclusion criteria in the study from Liepert was that patients had to be in the remitting phase of the disease, thus presumably also had longer disease durations. Finally, a similar reduction of SICI was found in the relapsing phase of the disease in comparison with remitting patients in a study by Caramia *et al* (2004). Also in this case the study group had longer disease duration (mean  $4.29 \pm 3.26$  years), included only patients with a definite diagnosis of RRMS. Thus differences in the results may be explained by the different clinical characteristics of the samples studied.

A recent investigation based on a different TMS protocol to induce neuroplastic changes, suggested that motor plasticity in MS patients is comparable to that found in healthy subjects (Zeller *et al*, 2010). Neuroplasticity in this study was however assessed only in patients in the remitting phase of the disease, with a stable clinical condition, while the alterations observed in our study were evident in patients with cognitive impairment and presence of Gd<sup>+</sup> lesions.

The reduction in CSF amyloid- $\beta_{1-42}$  in AD has been postulated to reflect deposition of the aggregated insoluble fibrillar amyloid- $\beta$  peptides in senile plaque, with lower levels of diffusion into the CSF. A limitation of the present study is that we do not provide any evidence of amyloid- $\beta$  tissue deposition in our patients. We cannot argue, therefore, that the decrease in amyloid- $\beta_{1-42}$  CSF levels observed is consequent to tissue deposition. However, AD neuropathology apart from amyloid- $\beta$  deposition includes variable amounts of soluble species that show much stronger correlations with severity of dementia than fibrillar amyloid- $\beta$  (Terry 1996; Lue *et al*, 1999; McLean *et al*, 1999; Gandy *et al*, 2010). Synthetic amyloid- $\beta$  dimers are extremely potent inhibitors of synaptic plasticity both in vivo and in vitro whereas even relatively high concentrations of amyloid- $\beta$  monomers are inactive (Selkoe, 2008; Hu *et al*, 2008; Shankar *et al*, 2008). Moreover,

human ex vivo samples of CSF that contain amyloid- $\beta$  oligomers but not monomers, potentially inhibit LTP (Klyubin *et al*, 2005). The lowering of natively measured amyloid- $\beta_{1-42}$  in the CSF of our patients may be consequent to oligomerization as observed in AD (Englund *et al*, 2009). Finally a transgenic mice, overexpressing APP<sup>E693Q</sup> develops learning and memory deficits in association with formation of amyloid beta oligomers without generating amyloid plaques in their brains at any age (Gandy *et al*, 2010). These observations, even though only at a speculative stage, could help explaining the findings of our iTBS experiments. Another possibility is that the observed findings could be related to inflammation-induced downregulation of  $\beta$ -site APP cleavage. Accordingly, BACE activity is modulated by inflammation (Mattsson *et al*, 2009), and is also involved in the promotion of myelination by oligodendrocytes (Hu *et al*, 2006).

Nevertheless, the mechanism by which amyloid- $\beta_{1-42}$  is reduced during inflammation in MS remains unclear and further studies are needed to better clarify this issue.

#### **DISCLOSURE/CONFLICT OF INTERESTS**

The authors have no financial interests or conflicts of interest to disclose.

#### **ACKNOWLEDGEMENTS**

This investigation was supported by the Italian National Ministero dell'Università e della Ricerca to DC, by the Italian National Ministero della Salute, and by Fondazione TERCAS to DC.

## REFERENCES

- Amato MP, Bartolozzi ML, Zipoli V, Portaccio E, Mortilla M, Guidi L, Siracusa G, Sorbi S, Federico A, De Stefano N (2004). Neocortical volume decrease in relapsing–remitting MS patients with mild cognitive impairment. *Neurology* **63**: 89-93.
- Amato MP, Zipoli V, Goretti B, Portaccio E, De Caro MF, Ricchiuti L, Siracusa G, Masini M, Sorbi S, Trojano M (2006a). Benign multiple sclerosis: cognitive, psychological and social aspects in a clinical cohort. *J Neurol* **253**: 1054–1059.
- Amato MP, Portaccio E, Goretti B, Zipoli V, Ricchiuti L, De Caro MF, Patti F, Vecchio R, Sorbi S, Trojano M (2006b). The Rao’s Brief Repeatable Battery and Stroop Test: normative values with age, education and gender corrections in an Italian population. *Mult Scler* **12**: 787–793.
- Amato MP, Zipoli V, Portaccio E (2008a). Cognitive changes in multiple sclerosis. *Expert Rev Neurother* **8**: 1585-1596.
- Amato MP, Portaccio E, Stromillo ML, Goretti B, Zipoli V, Siracusa G, Battaglini M, Giorgio A, Bartolozzi ML, Guidi L, Sorbi S, Federico A, De Stefano N (2008b). Cognitive assessment and quantitative magnetic resonance metrics can help to identify benign multiple sclerosis. *Neurology* **71**: 632-638.
- Andreasson U, Portelius E, Andersson ME, Blennow K, Zetterberg H. Aspects of beta-amyloid as a biomarker for Alzheimer's disease. *Biomark Med.* 2007 Jun;1(1):59-78.
- Anwyl R (2009). Metabotropic glutamate receptor-dependent long-term potentiation. *Neuropharmacology* **56**: 735-740.

Battaglia F, Wang HY, Ghilardi MF, Gashi E, Quartarone A, Friedman E, Nixon RA (2007). Cortical plasticity in Alzheimer's disease in humans and rodents. *Biol Psychiatry* **62**: 1405-1412.

Bellmann-Strobl J, Wuerfel J, Aktas O, Dörr J, Wernecke KD, Zipp F, Paul F (2009). Poor PASAT performance correlates with MRI contrast enhancement in multiple sclerosis. *Neurology* **73**: 1624-1627.

Bliss TV, Collingridge GL (1993). A synaptic model of memory: long-term potentiation in the hippocampus. *Nature* **361**: 31-39.

Buxbaum JD, Oishi M, Chen HI, Pinkas-Kramarski R, Jaffe EA, Gandy SE, Greengard P (1992). Cholinergic agonists and interleukin 1 regulate processing and secretion of the Alzheimer beta/A4 amyloid protein precursor. *Proc Natl Acad Sci U S A* **89**: 10075-10078.

Calabrese M, Agosta F, Rinaldi F, Mattisi I, Grossi P, Favaretto A, Atzori M, Bernardi V, Barachino L, Rinaldi L, Perini P, Gallo P, Filippi M (2009). Cortical lesions and atrophy associated with cognitive impairment in relapsing-remitting multiple sclerosis. *Arch Neurol* **66**: 1144-1150.

Calabrese M, Rinaldi F, Mattisi I, Grossi P, Favaretto A, Atzori M, Bernardi V, Barachino L, Romualdi C, Rinaldi L, Perini P, Gallo P (2010). Widespread cortical thinning characterizes patients with MS with mild cognitive impairment. *Neurology* **74**: 321-318.

Caramia MD, Palmieri MG, Desiato MT, Boffa L, Galizia P, Rossini PM, Centonze D, Bernardi G (2004). Brain excitability changes in the relapsing and remitting phases of multiple sclerosis: a study with transcranial magnetic stimulation. *Clin Neurophysiol* **115**: 956-965.

Centonze D, Bari M, Rossi S, Prosperetti C, Furlan R, Fezza F, De Chiara V, Battistini L, Bernardi G, Bernardini S, Martino G, Maccarrone M (2007). The endocannabinoid system is dysregulated in multiple sclerosis and in experimental autoimmune encephalomyelitis. *Brain* **130**: 2543-2553.

Chiaravalloti ND, DeLuca J (2008). Cognitive impairment in multiple sclerosis. *Lancet Neurol* **7**: 1139-1151.

Conte A, Lenzi D, Frasca V, Gilio F, Giacomelli E, Gabriele M, Bettolo CM, Iacovelli E, Pantano P, Pozzilli C, Inghilleri M (2009). Intracortical excitability in patients with relapsing-remitting and secondary progressive multiple sclerosis. *J Neurol* **256**: 933-938.

Cooke SF, Bliss TV (2006). Plasticity in the human central nervous system. *Brain* **129**: 1659-1673.

Dal Bianco A, Bradl M, Frischer J, Kutzelnigg A, Jellinger K, Lassmann H (2008). Multiple sclerosis and Alzheimer's disease. *Ann Neurol* **63**: 174-183.

Di Lazzaro V, Pilato F, Dileone M, Profice P, Oliviero A, Mazzone P, Insola A, Ranieri F, Meglio M, Tonali PA, Rothwell JC (2008). The physiological basis of the effects of intermittent theta burst stimulation of the human motor cortex. *J Physiol* **586**: 3871-3879.

Dujmovic I, Mangano K, Pekmezovic T, Quattrocchi C, Mesaros S, Stojavljevic N, Nicoletti F, Drulovic J (2009). The analysis of IL-1 beta and its naturally occurring inhibitors in multiple sclerosis: The elevation of IL-1 receptor antagonist and IL-1 receptor type II after steroid therapy. *J Neuroimmunol* **207**: 101-106.

Englund H, Degerman Gunnarsson M, Brundin RM, Hedlund M, Kilander L, Lannfelt L, Pettersson FE (2009). Oligomerization partially explains the lowering of Abeta42 in Alzheimer's disease cerebrospinal fluid. *Neurodegener Dis* **6**: 139-147.

Fan LW, Mitchell HJ, Tien LT, Rhodes PG, Cai Z (2009). Interleukin-1beta-induced brain injury in the neonatal rat can be ameliorated by alpha-phenyl-n-tert-butyl-nitron. *Exp Neurol* **220**: 143-153.

Feldman DE (2009). Synaptic mechanisms for plasticity in neocortex. *Annu Rev Neurosci* **32**: 33-55.

Foong J, Rozewicz L, Quaghebeur G, Thompson AJ, Miller DH, Ron MA (1998). Neuropsychological deficits in multiple sclerosis after acute relapse. *J Neurol Neurosurg Psychiatry* **64**: 529-532.

Gandy S, Simon AJ, Steele JW, Lublin AL, Lah JJ, Walker LC, Levey AI, Krafft GA, Levy E, Checler F, Glabe C, Bilker WB, Abel T, Schmeidler J, Ehrlich ME (2010). Days to criterion as an indicator of toxicity associated with human Alzheimer amyloid-beta oligomers. *Ann Neurol*. Apr 14. [Epub ahead of print]

Genova HM, Sumowski JF, Chiaravalloti N, Voelbel GT, Deluca J (2009). Cognition in multiple sclerosis: a review of neuropsychological and fMRI research. *Front Biosci* **14**: 1730-1744.

Ghoshal N, García-Sierra F, Wu J, Leurgans S, Bennett DA, Berry RW, Binder LI (2002). Tau conformational changes correspond to impairments of episodic memory in mild cognitive impairment and Alzheimer's disease. *Exp Neurol* **177**: 475–493.

Goldgaber D, Harris HW, Hla T, Maciag T, Donnelly RJ, Jacobsen JS, Vitek MP, Gajdusek DC (1989). Interleukin 1 regulates synthesis of amyloid beta-protein precursor mRNA in human endothelial cells. *Proc Natl Acad Sci U S A* **86**: 7606-7610.

Gong N, Li Y, Cai GQ, Niu RF, Fang Q, Wu K, Chen Z, Lin LN, Xu L, Fei J, Xu TL (2009). GABA transporter-1 activity modulates hippocampal theta oscillation and theta burst stimulation-induced long-term potentiation. *J Neurosci* **29**: 15836-15845.

Griffin WS, Liu L, Li Y, Mrak RE, Barger SW (2006). Interleukin-1 mediates Alzheimer and Lewy body pathologies. *J Neuroinflammation* **3**: 5.

Hanajima R, Ugawa Y, Terao Y, Enomoto H, Shiio Y, Mochizuki H, Furubayashi T, Uesugi H, Iwata NK, Kanazawa I (2002). Mechanisms of intracortical I-wave facilitation elicited with paired-pulse magnetic stimulation in humans. *J Physiol* **538**: 253-261.

Harris VK, Sadiq SA (2009). Disease biomarkers in multiple sclerosis: potential for use in therapeutic decision making. *Mol Diagn Ther* **13**: 225-244.

Hein Née Maier K, Köhler A, Diem R, Sättler MB, Demmer I, Lange P, Bähr M, Otto M (2008). Biological markers for axonal degeneration in CSF and blood of patients with the first event indicative for multiple sclerosis. *Neurosci Lett* **436**: 72-76.

Hickman SE, Allison EK, El Khoury J (2008). Microglial dysfunction and defective beta-amyloid clearance pathways in aging Alzheimer's disease mice. *J Neurosci* **28**: 8354-8360.

Hoffmann V, Kuhn W, Schimrigk S, Islamova S, Hellwig K, Lukas C, Brune N, Pöhlau D, Przuntek H, Müller T (2006). Repeat intrathecal triamcinolone acetonide application is beneficial in progressive MS patients. *Eur J Neurol* **13**: 72-76.

Hong HS, Hwang EM, Sim HJ, Cho HJ, Boo JH, Oh SS, Kim SU, Mook-Jung I (2003). Interferon gamma stimulates beta-secretase expression and sAPPbeta production in astrocytes. *Biochem Biophys Res Commun* **307**: 922-7

Hu NW, Smith IM, Walsh DM, Rowan MJ (2008). Soluble amyloid-beta peptides potently disrupt hippocampal synaptic plasticity in the absence of cerebrovascular dysfunction in vivo. *Brain* **131**: 2414-2424.

Hu X, Hicks CW, He W, Wong P, Macklin WB, Trapp BD, Yan R (2006). Bace1 modulates myelination in the central and peripheral nervous system. *Nat Neurosci* **9**: 1520-1525.

Huang YZ, Edwards MJ, Rounis E, Bhatia KP, Rothwell JC (2005). Theta burst stimulation of the human motor cortex. *Neuron* **45**: 201-206.

Huang YZ, Rothwell JC, Edwards MJ, Chen RS (2008). Effect of physiological activity on an NMDA-dependent form of cortical plasticity in human. *Cereb Cortex* **18**: 563-570.



Inghilleri M, Conte A, Frasca V, Scaldaferrì N, Gilio F, Santini M, Fabbrini G, Prencipe M, Berardelli A (2006). Altered response to rTMS in patients with Alzheimer's disease. *Clin Neurophysiol* **117**: 103-109.

Ishizu T, Osoegawa M, Mei FJ, Kikuchi H, Tanaka M, Takakura Y, Minohara M, Murai H, Mihara F, Taniwaki T, Kira J (2005). Intrathecal activation of the IL-17/IL-8 axis in opticospinal multiple sclerosis. *Brain* **128**: 988-1002.

Ivanou A, Sindic CJM (2005). Cerebrospinal fluid tau protein and amyloid beta 42 in mild cognitive impairment: prediction of progression to Alzheimer's disease and correlation with the neuropsychological examination. *Neurocase* **11**: 32–39.

Jensen J, Langkilde AR, Frederiksen JL, Sellebjerg F (2006). CD8+ T cell activation correlates with disease activity in clinically isolated syndromes and is regulated by interferon-beta treatment. *J Neuroimmunol* **179**: 163-72.

Kessels HW, Malinow R (2009). Synaptic AMPA receptor plasticity and behavior. *Neuron* **61**: 340-350.

Klyubin I, Walsh DM, Lemere CA, Cullen WK, Shankar GM, Betts V, Spooner ET, Jiang L, Anwyl R, Selkoe DJ, Rowan MJ (2005). Amyloid beta protein immunotherapy neutralizes Abeta oligomers that disrupt synaptic plasticity in vivo. *Nat Med* **11**: 556-561.

Kujirai T, Caramia MD, Rothwell JC, Day BL, Thompson PD, Ferbert A, Wroe S, Asselman P, Marsden CD (1993). Corticocortical inhibition in human motor cortex. *J Physiol* **471**: 501-519.

Liepert J, Mingers D, Heesen C, Bäumer T, Weiller C (2005). Motor cortex excitability and fatigue in multiple sclerosis: a transcranial magnetic stimulation study. *Mult Scler* **11**: 316-321.

Luber B, Kinnunen LH, Rakitin BC, Ellsasser R, Stern Y, Lisanby SH (2007). Facilitation of performance in a working memory task with rTMS stimulation of the precuneus: frequency- and time-dependent effects. *Brain Res* **1128**: 120-129.

Lue LF, Kuo YM, Roher AE, Brachova L, Shen Y, Sue L, Beach T, Kurth JH, Rydel RE, Rogers J (1999). Soluble amyloid beta peptide concentration as a predictor of synaptic change in Alzheimer's disease. *Am J Pathol.* **155**: 853-62.

Malenka RC (2003). The long-term potential of LTP. *Nat Rev Neurosci* **4**: 923-926.

Matsuyama S, Taniguchi T, Kadoyama K, Matsumoto A (2008). Long-term potentiation-like facilitation through GABAA receptor blockade in the mouse dentate gyrus in vivo. *Neuroreport* **19**: 1809-1813.

Mattsson N, Axelsson M, Haghighi S, Malmeström C, Wu G, Anckarsäter R, Sankaranarayanan S, Andreasson U, Fredrikson S, Gundersen A, Johnsen L, Fladby T, Tarkowski A, Trysberg E, Wallin A, Anckarsäter H, Lycke J, Andersen O, Simon AJ, Blennow K, Zetterberg H (2009). Reduced cerebrospinal fluid BACE1 activity in multiple sclerosis. *Mult Scler* **15**: 448-454.

McDonald WI, Compston A, Edan G, Goodkin D, Hartung HP, Lublin FD, McFarland HF, Paty DW, Polman CH, Reingold SC, Sandberg-Wollheim M, Sibley W, Thompson A, van den Noort S, Weinshenker BY, Wolinsky JS (2001). Recommended diagnostic criteria for multiple sclerosis:

guidelines from the International Panel on the diagnosis of multiple sclerosis. *Ann Neurol* **50**: 121-127.

McLean CA, Cherny RA, Fraser FW, Fuller SJ, Smith MJ, Beyreuther K, Bush AI, Masters CL (1999). Soluble pool of A beta amyloid as a determinant of severity of neurodegeneration in Alzheimer's disease. *Ann Neurol* **46**: 860 - 866.

Minichiello L (2009). TrkB signalling pathways in LTP and learning. *Nat Rev Neurosci* **10**: 850-860.

Mulder SD, van der Flier WM, Verheijen JH, Mulder C, Scheltens P, Blankenstein MA, Hack CE, Veerhuis R (2010). BACE1 activity in cerebrospinal fluid and its relation to markers of AD pathology. *J Alzheimers Dis* **20**: 253-60

Nygaard HB, Strittmatter SM (2009). Cellular prion protein mediates the toxicity of beta-amyloid oligomers: implications for Alzheimer disease. *Arch Neurol* **66**: 1325-1328.

Oddo S, Caccamo A, Shepherd JD, Murphy MP, Golde TE, Kaye R, Metherate R, Mattson MP, Akbari Y, LaFerla FM (2003). Triple-transgenic model of Alzheimer's disease with plaques and tangles: intracellular Abeta and synaptic dysfunction. *Neuron* **39**: 409-421.

Ozturk A, Smith SA, Gordon-Lipkin EM, Harrison DM, Shiee N, Pham DL, Caffo BS, Calabresi PA, Reich DS (2010). MRI of the corpus callosum in multiple sclerosis: association with disability. *Mult Scler* **16**: 166-177.

Pan BX, Dong Y, Ito W, Yanagawa Y, Shigemoto R, Morozov A (2009). Selective gating of glutamatergic inputs to excitatory neurons of amygdala by presynaptic GABA<sub>B</sub> receptor. *Neuron* **61**: 917-929.

Perrin RJ, Fagan AM, Holtzman DM (2009). Multimodal techniques for diagnosis and prognosis of Alzheimer's disease. *Nature* **461**: 916-922.

Peretti CS (1998). Anxiety and cognition disorders. *Encephale* **24**: 256-259.

Polman CH, Reingold SC, Edan G, Filippi M, Hartung HP, Kappos L, Lublin FD, Metz LM, McFarland HF, O'Connor PW, Sandberg-Wollheim M, Thompson AJ, Weinshenker BG, Wolinsky JS (2005). Diagnostic criteria for multiple sclerosis: 2005 revisions to the "McDonald Criteria". *Ann Neurol* **58**: 840-846.

Polydoro M, Acker CM, Duff K, Castillo PE, Davies P (2009). Age-dependent impairment of cognitive and synaptic function in the htau mouse model of tau pathology. *J Neurosci* **29**: 10741-10749.

Rao S (1990). A Manual for the Brief Repeatable Battery of Neuropsychological Tests in Multiple Sclerosis. Milwaukee: Medical College of Wisconsin.

Rosenmann H, Grigoriadis N, Eldar-Levy H, Avital A, Rozenstein L, Touloumi O, Behar L, Ben-Hur T, Avraham Y, Berry E, Segal M, Ginzburg I, Abramsky O (2008). A novel transgenic mouse expressing double mutant tau driven by its natural promoter exhibits tauopathy characteristics. *Exp Neurol* **212**: 71-84.

Rothwell JC (1997). Techniques and mechanisms of action of transcranial stimulation of the human motor cortex. *J Neurosci Methods* **74**: 113-122.

Sancesario GM, Esposito Z, Nuccetelli M, Bernardini S, Sorge R, Martorana A, Federici G, Bernardi G, Sancesario G (2010). Abeta1-42 Detection in CSF of Alzheimer's disease is influenced by temperature: Indication of reversible Abeta1-42 aggregation? *Exp Neurol* **223**: 371-376.

Selkoe DJ (2008). Soluble oligomers of the amyloid beta-protein impair synaptic plasticity and behavior. *Behav Brain Res* **192**: 106-113.

Shankar GM, Li S, Mehta TH, Garcia-Munoz A, Shepardson NE, Smith I, Brett FM, Farrell MA, Rowan MJ, Lemere CA, Regan CM, Walsh DM, Sabatini BL, Selkoe DJ (2008). Amyloid-beta protein dimers isolated directly from Alzheimer's brains impair synaptic plasticity and memory. *Nat Med* **14**: 837-842.

Schmidt J, Barthel K, Wrede A, Salajegheh M, Bähr M, Dalakas MC (2008). Interrelation of inflammation and APP in sIBM: IL-1 beta induces accumulation of beta-amyloid in skeletal muscle. *Brain* **131**: 1228-1240.

Shimizu E, Kawahara K, Kajizono M, Sawada M, Nakayama H (2008). IL-4-induced selective clearance of oligomeric beta-amyloid peptide(1-42) by rat primary type 2 microglia. *J Immunol* **181**: 6503-6513.

Sinha S, Subramanian S, Miller L, Proctor TM, Roberts C, Burrows GG, Vandenbark AA, Offner H (2009). Cytokine switch and bystander suppression of autoimmune responses to multiple antigens

in experimental autoimmune encephalomyelitis by a single recombinant T-cell receptor ligand. *J Neurosci* **29**: 3816-3823.

Staff NP, Lucchinetti CF, Keegan BM (2009). Multiple sclerosis with predominant, severe cognitive impairment. *Arch Neurol* **66**: 1139-1143.

Terry RD (1996). The pathogenesis of Alzheimer disease: an alternative to the amyloid hypothesis. *J Neuropathol Exp Neurol* **55**: 1023-1025.

Tiemann L, Penner IK, Haupts M, Schlegel U, Calabrese P (2009). Cognitive decline in multiple sclerosis: impact of topographic lesion distribution on differential cognitive deficit patterns. *Mult Scler* **15**: 1164-1174.

Tombaugh TN (2006). A comprehensive review of the Paced Auditory Serial Addition Test (PASAT). *Arch Clin Neuropsychol* **21**: 53-76.

Townsend M, Qu Y, Gray A, Wu Z, Seto T, Hutton M, Shearman MS, Middleton RE (2010). Oral treatment with a  $\gamma$ -secretase inhibitor improves long-term potentiation in a mouse model of Alzheimer's disease. *J Pharmacol Exp Ther* **333**: 110-119.

Valis M, Talab R, Stourac P, Andrys C, Masopust J (2008). Tau protein, phosphorylated tau protein and beta-amyloid<sub>42</sub> in the cerebrospinal fluid of multiple sclerosis patients. *Neuro Endocrinol Lett* **29**: 971-916.

Valls-Solé J, Pascual-Leone A, Wassermann EM, Hallett M (1992). Human motor evoked responses to paired transcranial magnetic stimuli. *Electroencephalogr Clin Neurophysiol* **85**: 355-364.

Vemuri P, Wiste HJ, Weigand SD, Shaw KM, Trojanowski JQ, Weiner MW *et al* On behalf of the Alzheimer's Disease Neuroimaging Initiative (2009). MRI and CSF biomarkers in normal, MCI, and AD subjects. Diagnostic discrimination and cognitive correlations. *Neurology* **73**: 287-293.

Walther T, Albrecht D, Becker M, Schubert M, Kouznetsova E, Wiesner B, Maul B, Schliebs R, Grecksch G, Furkert J, Sterner-Kock A, Schultheiss HP, Becker A, Siems WE (2009). Improved learning and memory in aged mice deficient in amyloid beta-degrading neutral endopeptidase. *PLoS One* **4**: e4590.

Zeller D, aufm Kampe K, Biller A, Stefan K, Gentner R, Schütz A, Bartsch A, Bendszus M, Toyka KV, Rieckmann P, Classen J (2010). Rapid-onset central motor plasticity in multiple sclerosis. *Neurology* **74**: 728-735.

Ziemann U (2004). TMS induced plasticity in human cortex. *Rev Neurosci* **15**: 253-266.

Ziemann U, Ilić TV, Pauli C, Meintzschel F, Ruge D (2004). Learning modifies subsequent induction of long-term potentiation-like and long-term depression-like plasticity in human motor cortex. *J Neurosci* **24**: 1666-16672.

Ziemann U, Tergau F, Wischer S, Hildebrandt J, Paulus W (1998). Pharmacological control of facilitatory I-wave interaction in the human motor cortex. A paired transcranial magnetic stimulation study. *Electroencephalogr Clin Neurophysiol* **109**: 321-330.

## FIGURE LEGENDS

**Figure 1.** CSF contents of amyloid- $\beta_{1-42}$  are reduced in MS patients and correlate with their cognitive functions. A. Amyloid- $\beta_{1-42}$  levels were significantly reduced in the CSF of MS subjects, compared to control individuals. B. Tau protein levels were not altered in the CSF of MS patients. C. In a subgroup of 21 MS patients, who gave consent to the Neuropsychological assessment, that, amyloid- $\beta_{1-42}$  levels were lower in cognitively impaired (CI) MS patients than in both cognitively preserved (CP) MS patients and controls. D. Tau protein CSF levels were normal also in CI MS patients. E. Correlation plot between amyloid- $\beta_{1-42}$  CSF levels and PASAT score in MS subjects. F. Correlation plot between amyloid- $\beta_{1-42}$  CSF levels and SDMT in MS subjects. In this figure and in the following ones, amyloid- $\beta_{1-42}$  is abbreviated in “amyloid- $\beta$ ”

\* =  $p < 0.05$  versus control \*\* =  $p < 0.01$  versus control # =  $p < 0.05$  versus CP MS.

PASAT = Paced Auditory Serial Addition Test; SDMT = Symbol Digit Modalities Test.

**Figure 2.** Disease activity at MRI correlates with reduction of amyloid- $\beta_{1-42}$  levels in the CSF of MS subjects. A. The graph shows that, upon grouping of MS patients according to the presence of Gd+ lesions, amyloid- $\beta_{1-42}$  levels were lower in Gd+ MS subjects than in both Gd- MS subjects and controls. B. Tau protein CSF levels were normal also in Gd+ MS patients. C. Correlation plot between amyloid- $\beta_{1-42}$  CSF levels and the number of Gd+ lesions in Gd+ MS subjects. D. Correlation plot between amyloid- $\beta_{1-42}$  CSF levels and T2 lesion volume in MS subjects. E,F. Correlation plots between tau CSF levels and the number of Gd+ lesions (E) or T2 lesion volume in MS subjects (F).

\*\* =  $p < 0.01$  versus control # =  $p < 0.05$  versus Gd- MS

Gd+ = Gadolinium-enhancing; Gd- = non Gadolinium enhancing.



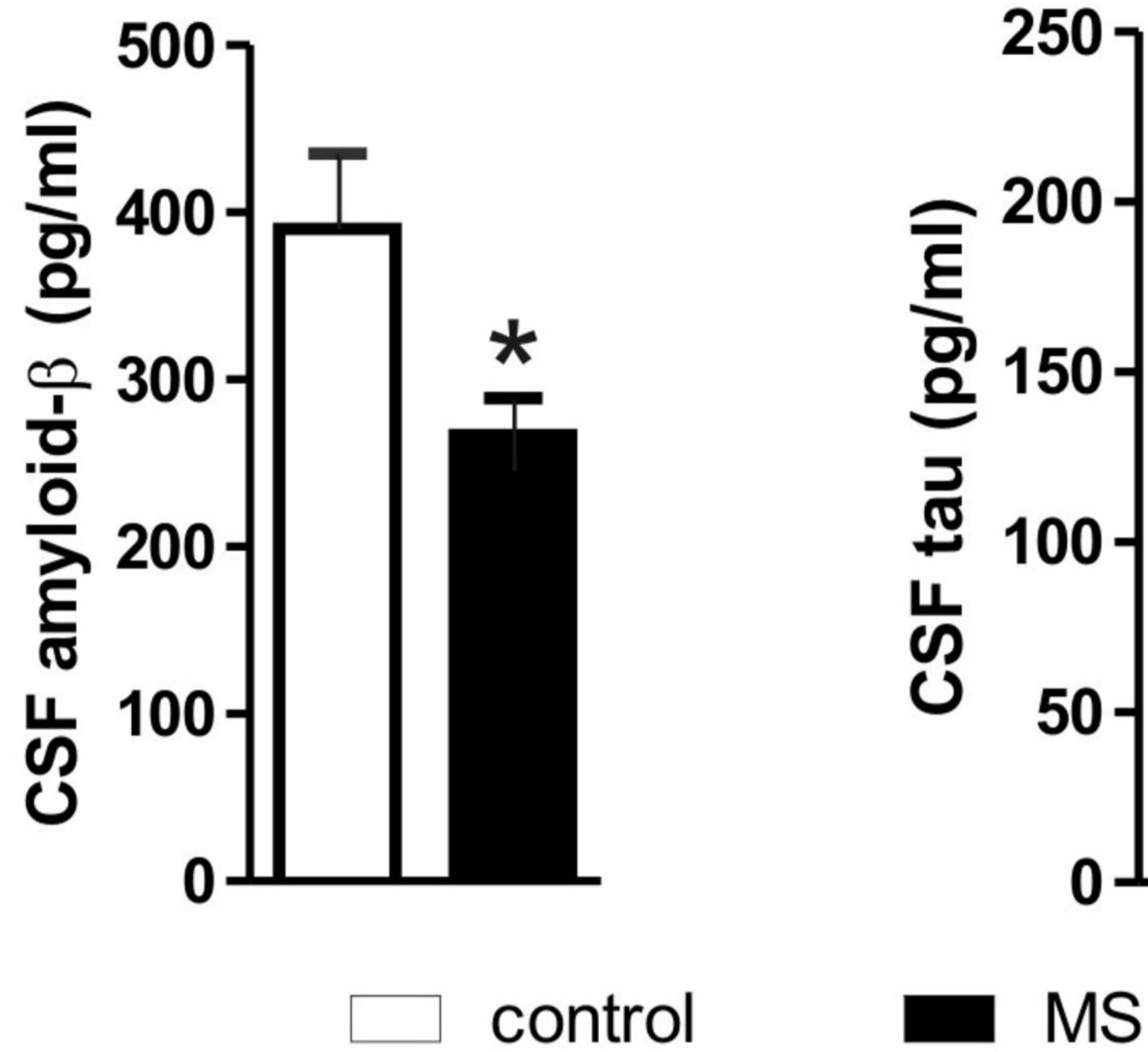
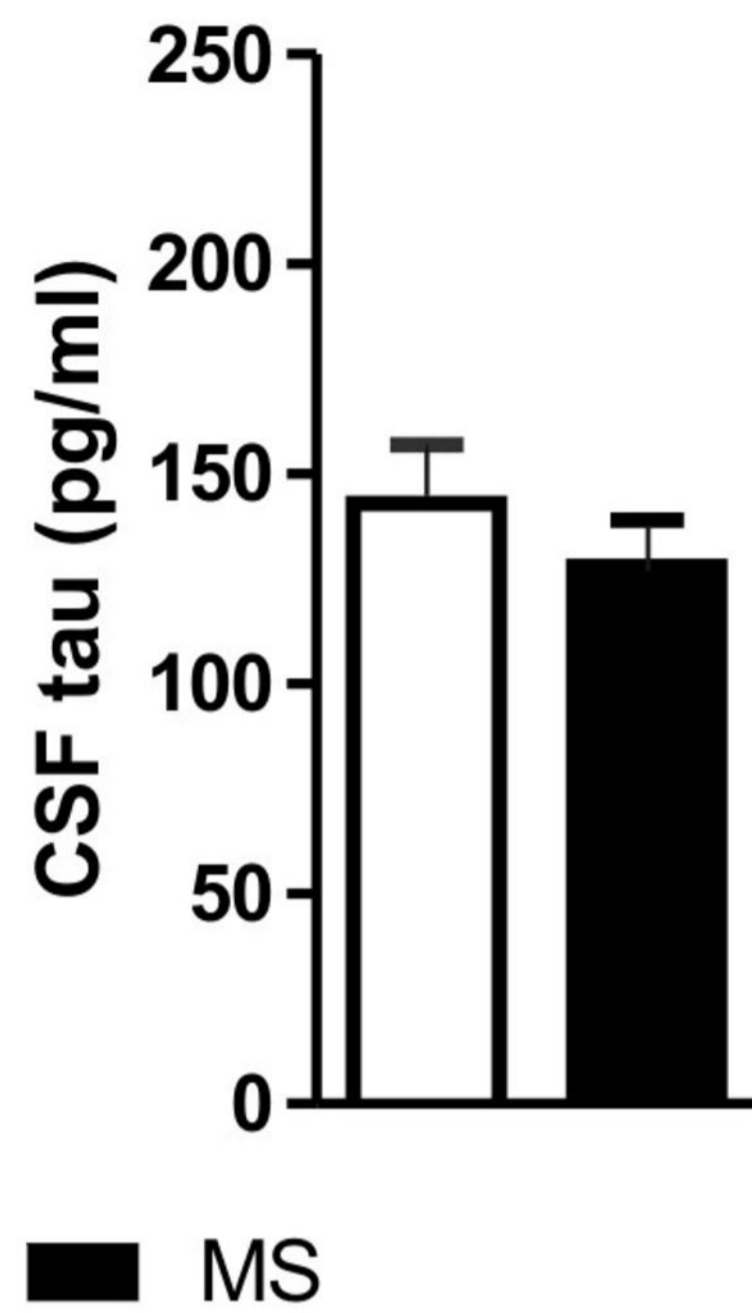
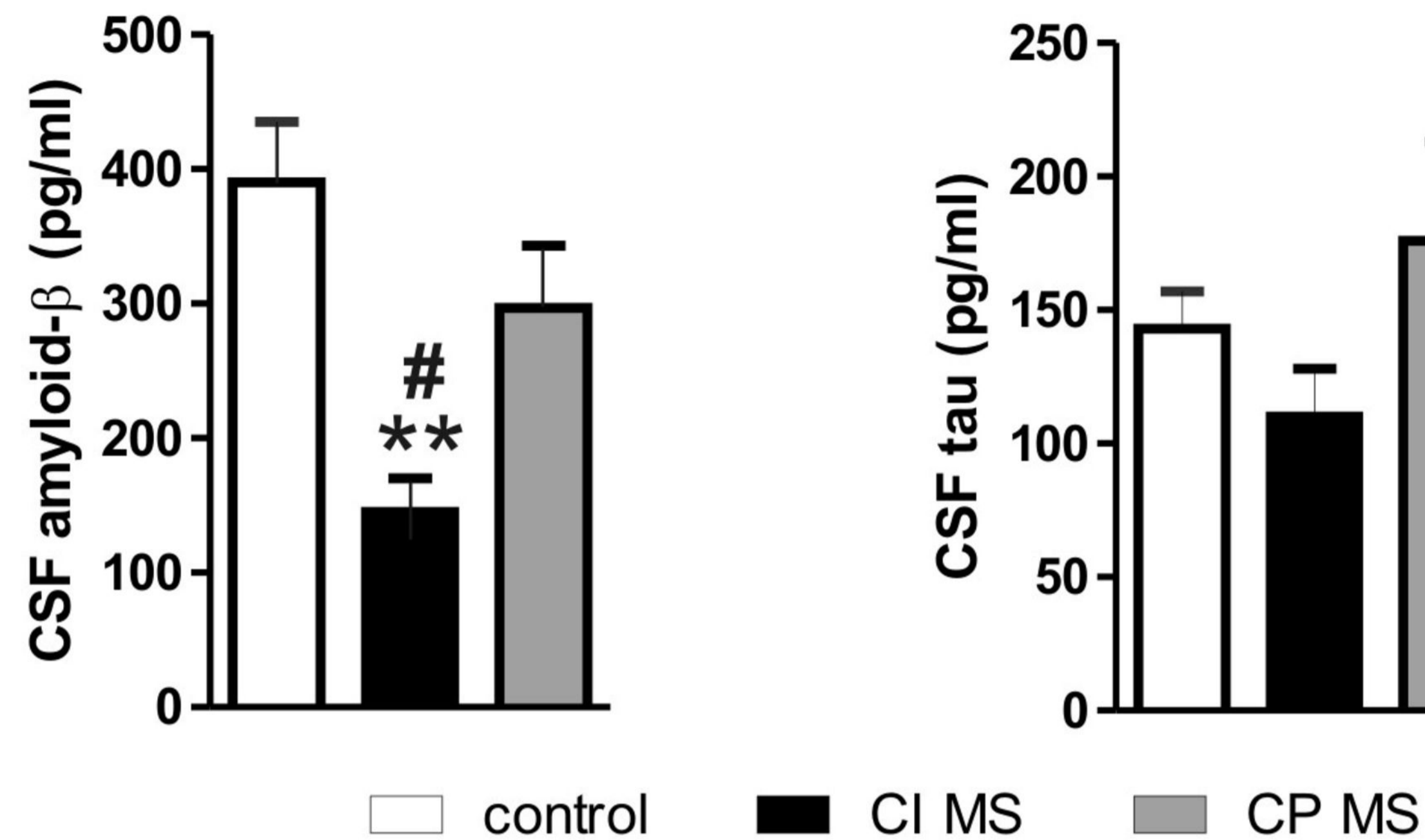
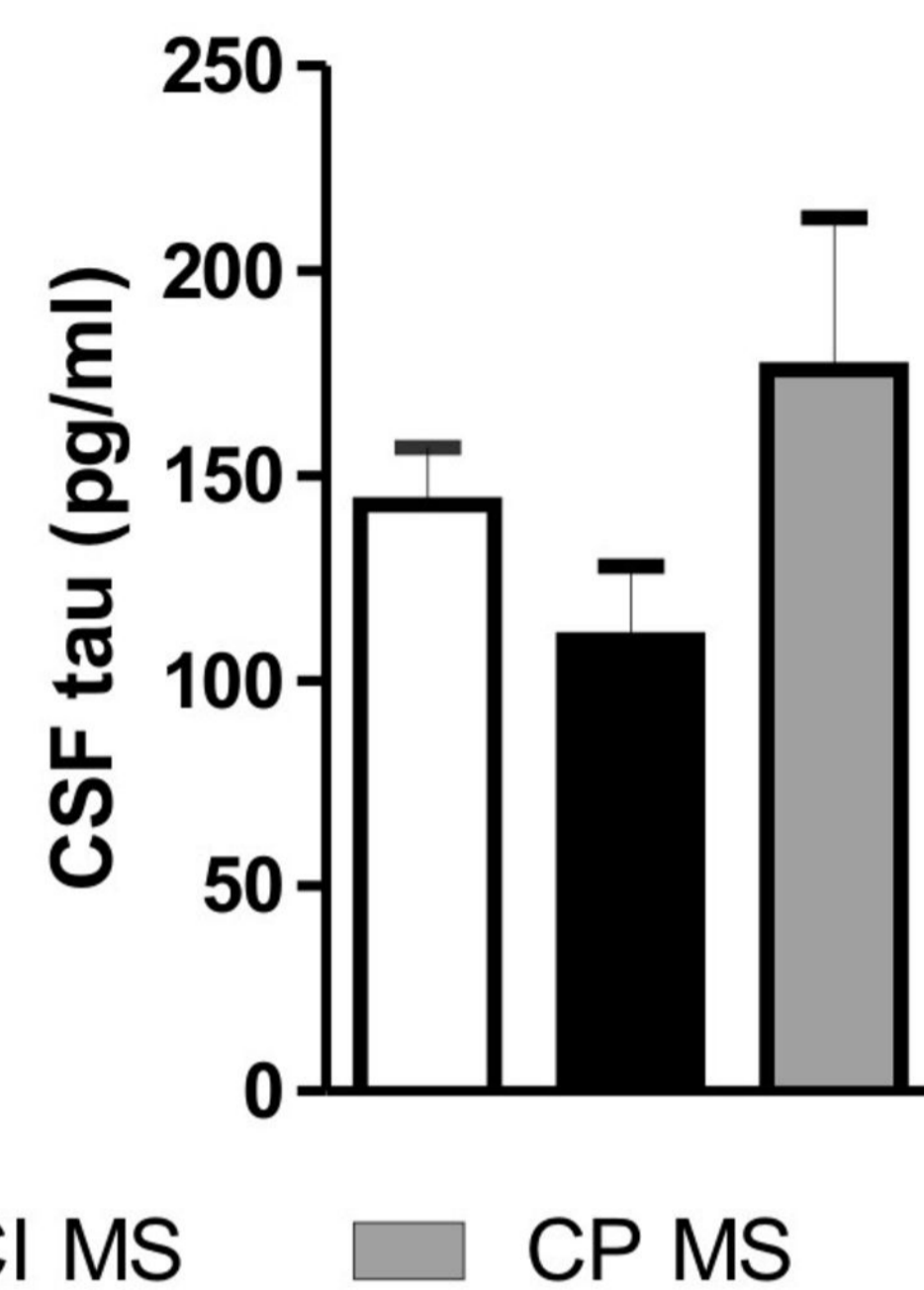
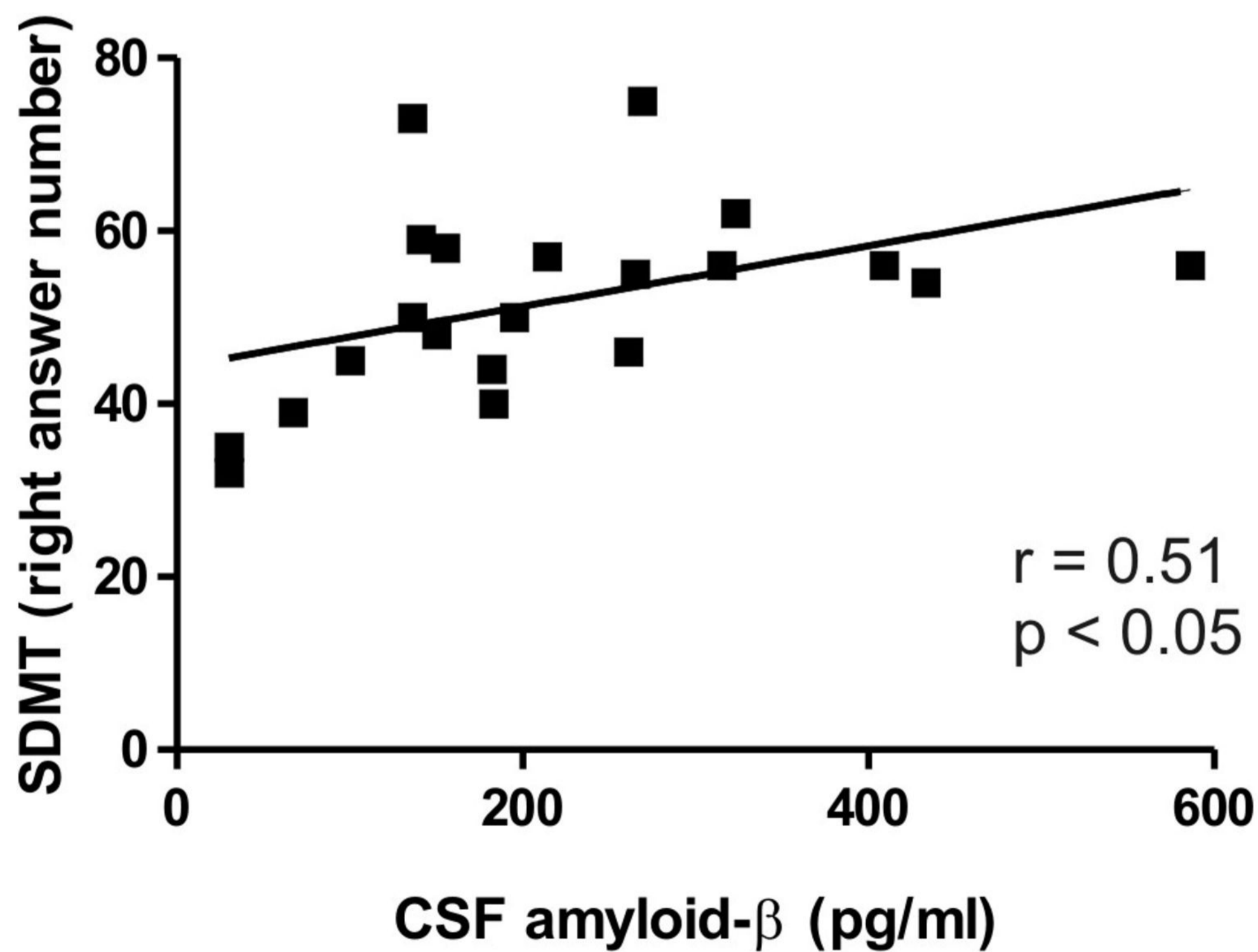
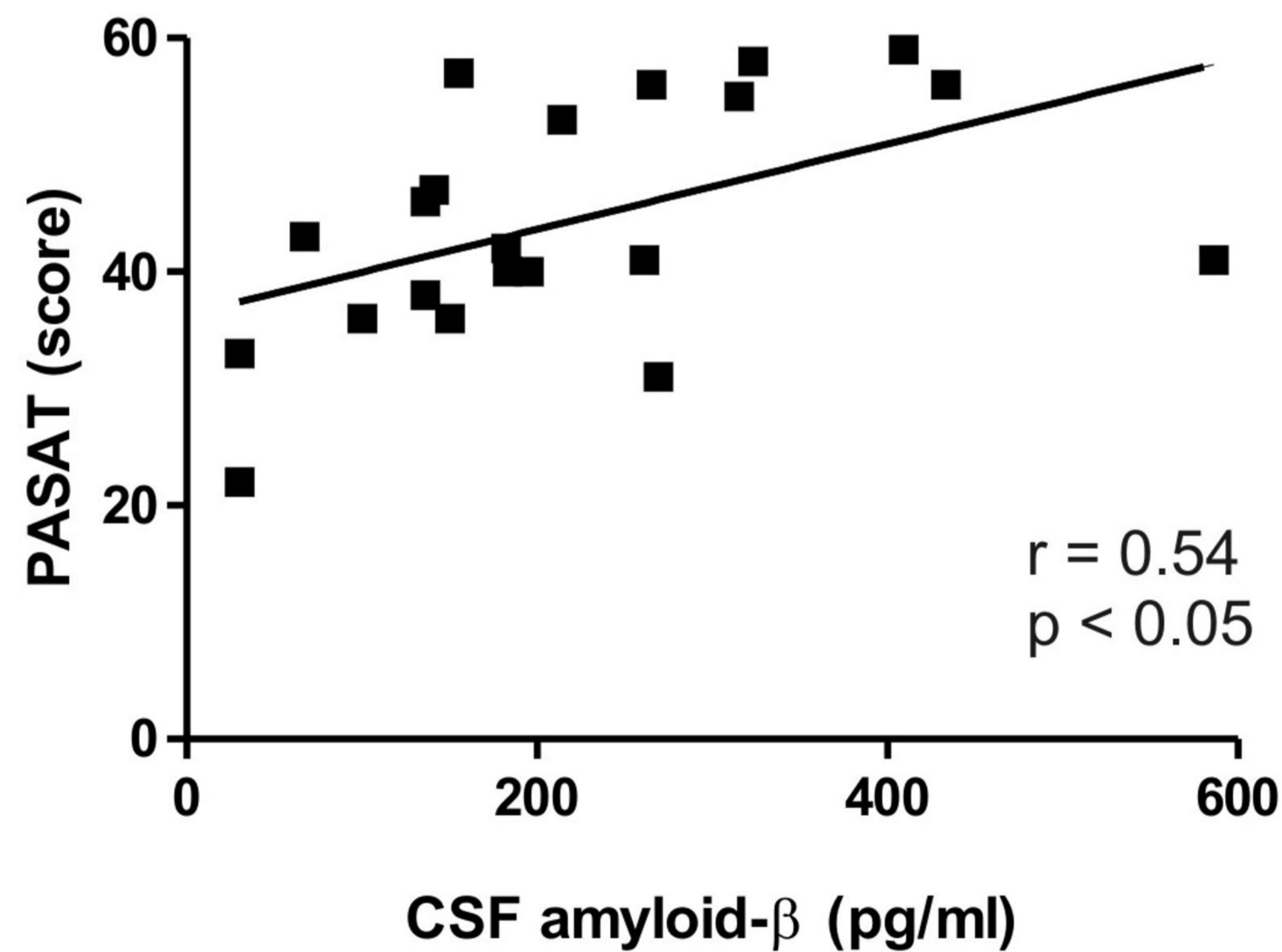
**Figure 3.** TBS induced LTP magnitude correlates with amyloid- $\beta_{1-42}$  levels in the CSF of MS subjects. A. Correlation plot between amyloid- $\beta_{1-42}$  CSF levels and MEP amplitude changes, expressed as percentage of baseline, immediately after TBS, and B) 15 minutes after TBS. C, D. Correlation plots between tau CSF levels and TBS-induced LTP.

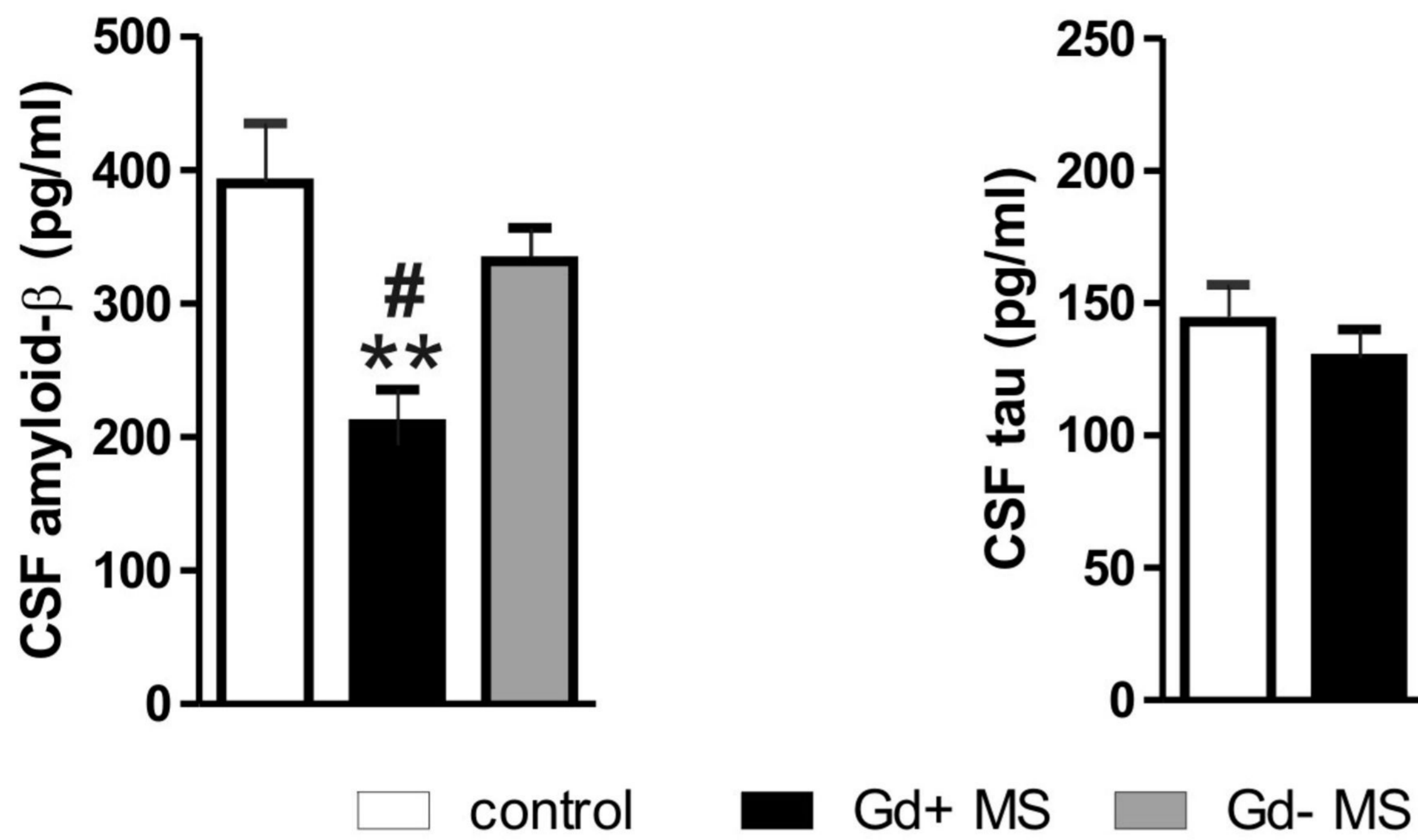
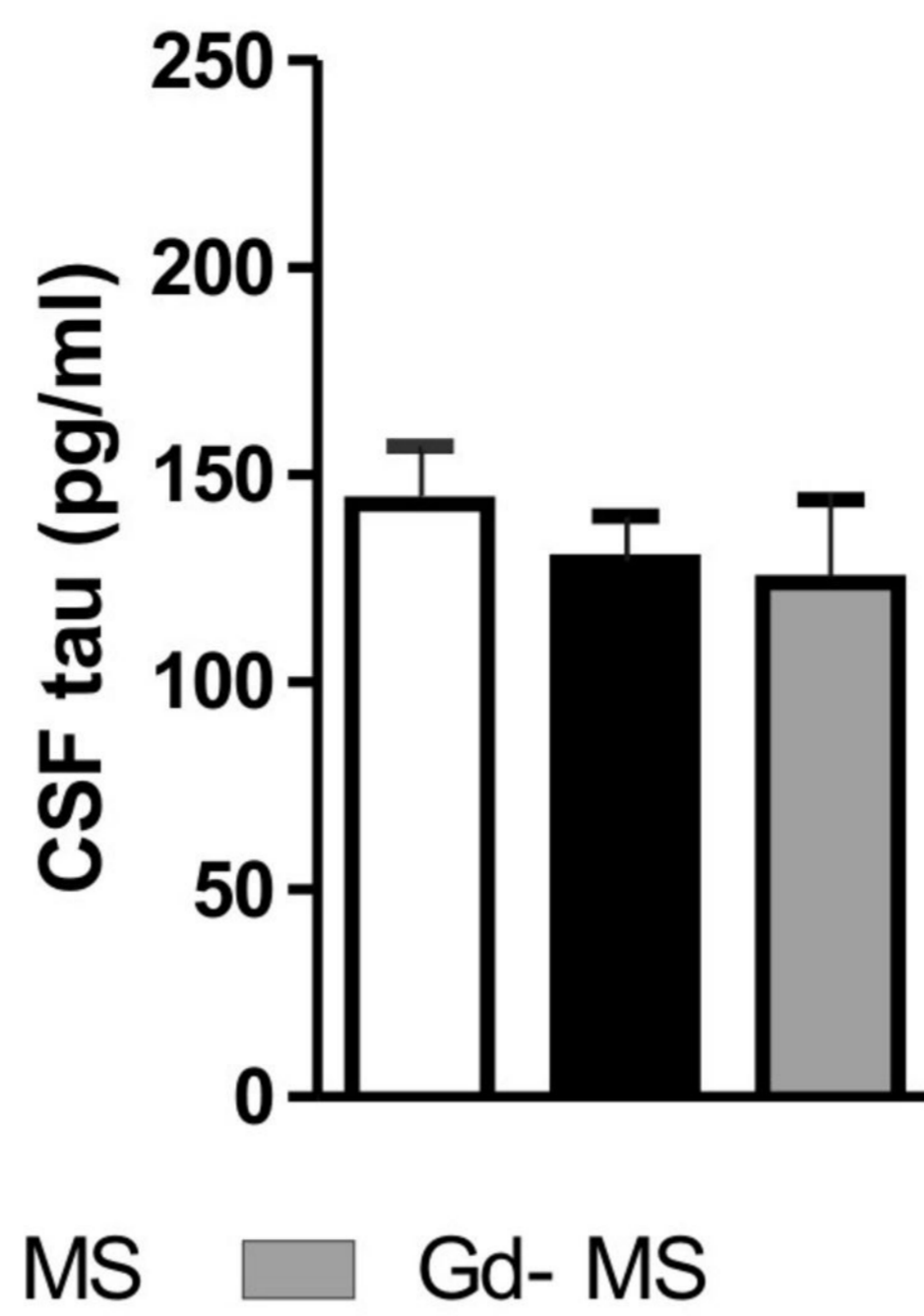
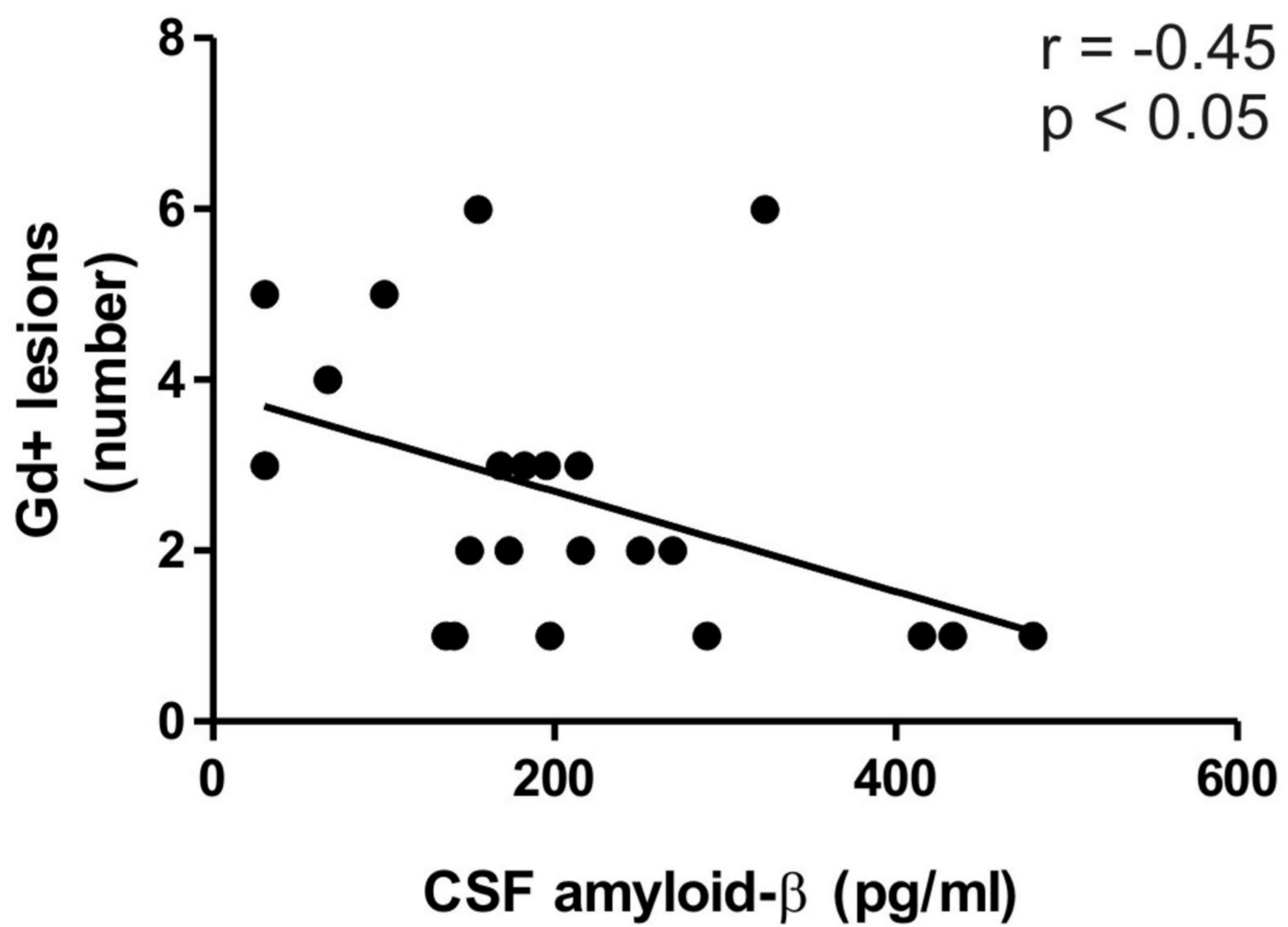
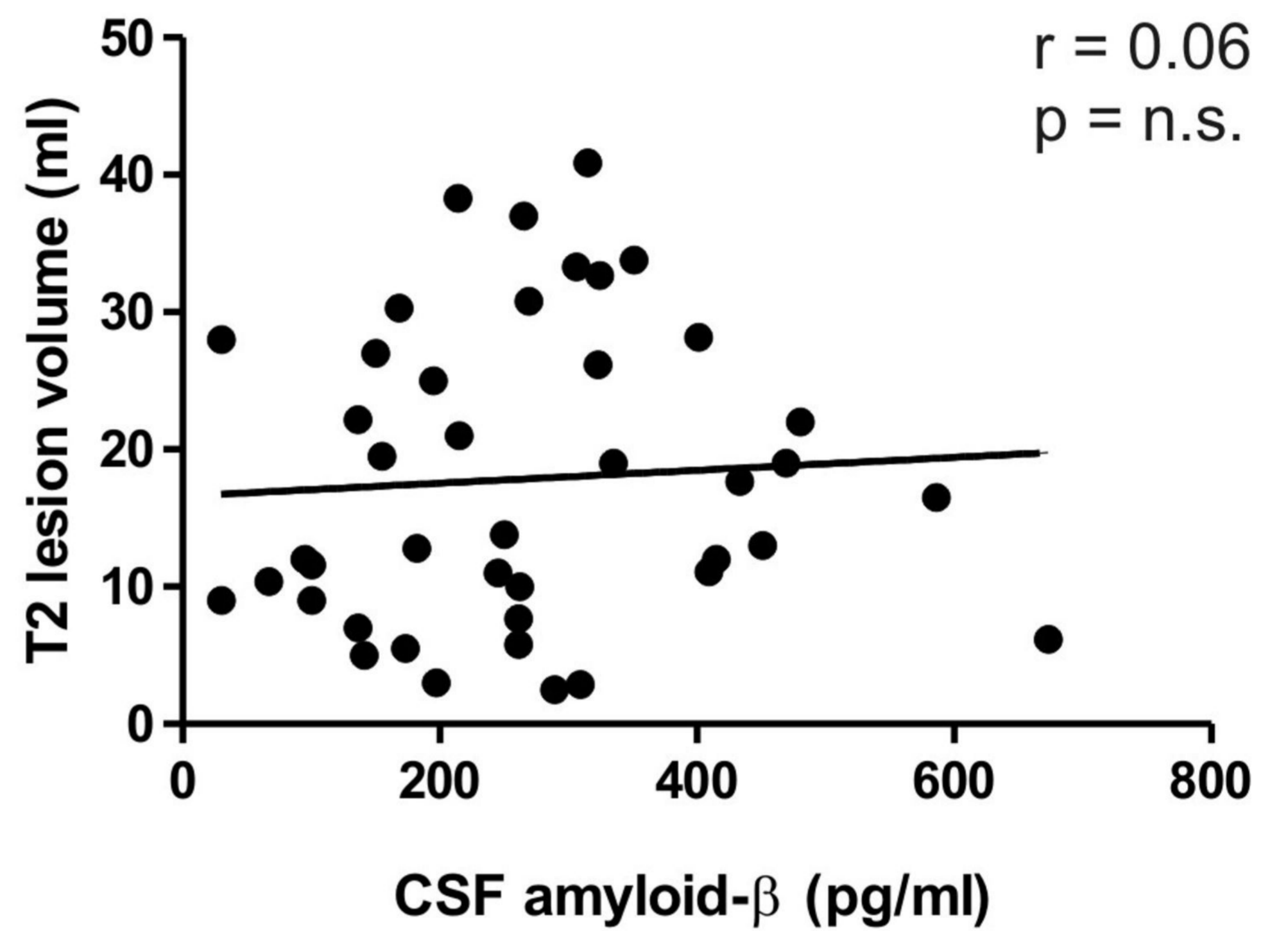
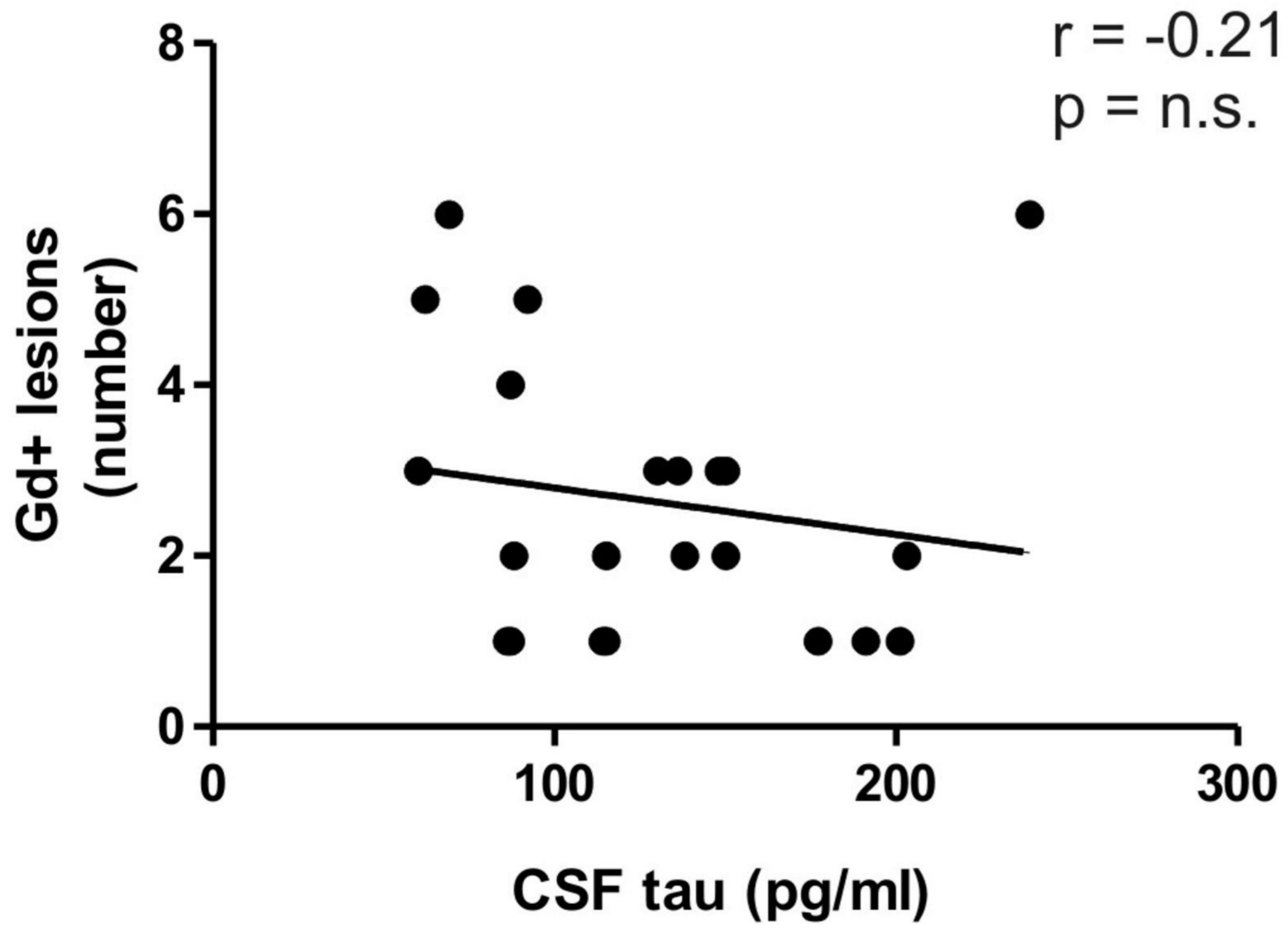
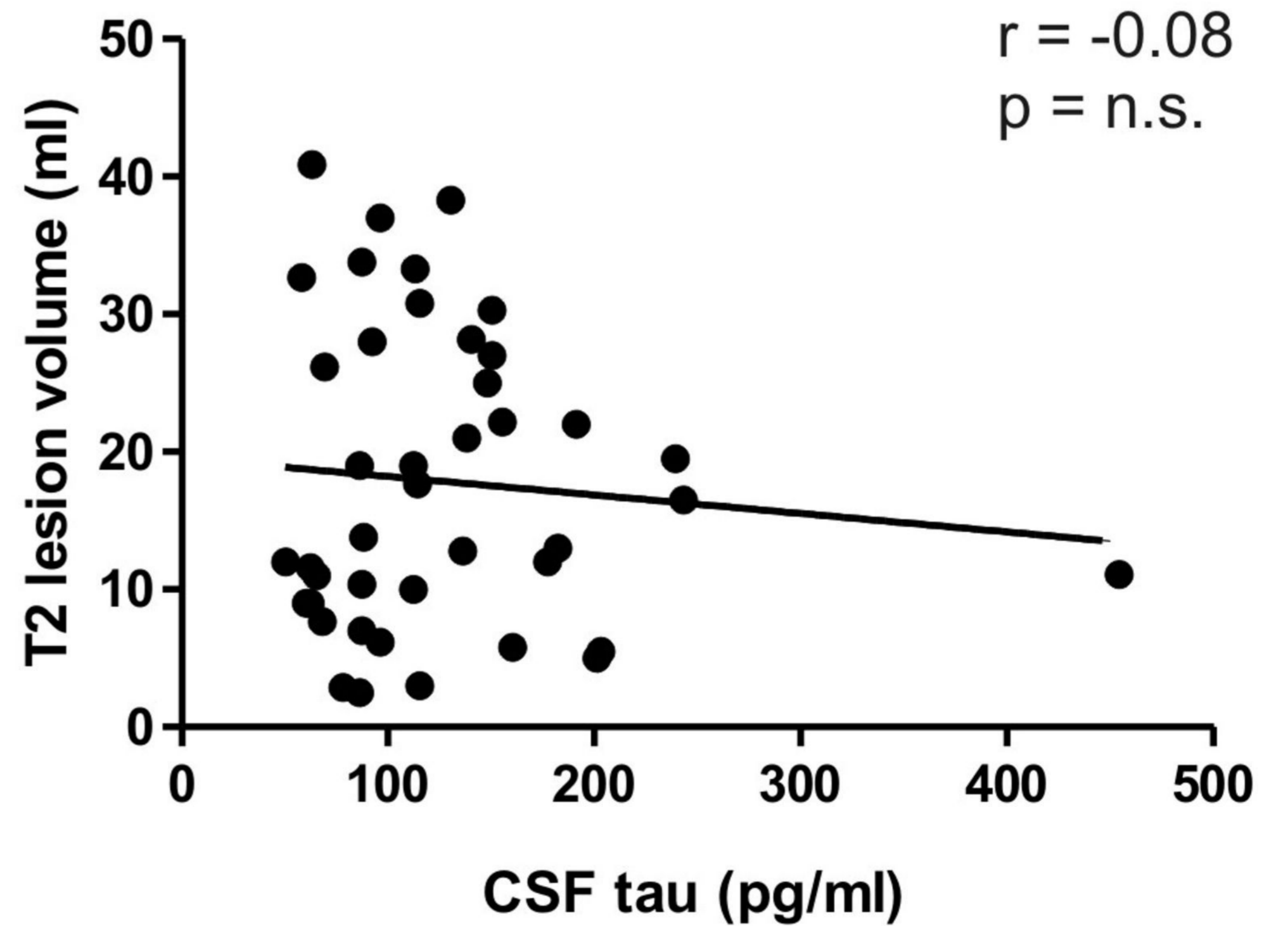
LTP = long term potentiation; TBS = theta burst stimulation.

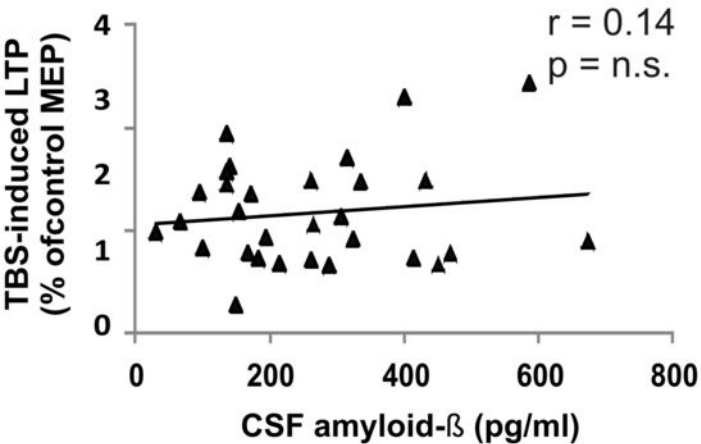
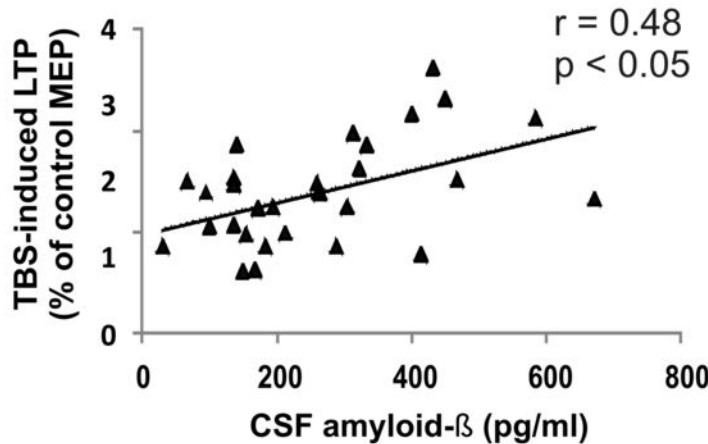
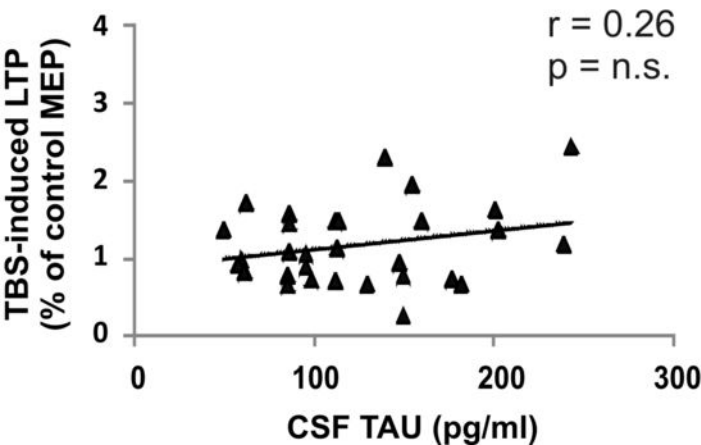
**Figure 4.** TBS induced LTP differs between cognitively impaired and cognitively preserved MS patients. Differences between the two groups were observed at both 0 and 15 minutes after TBS time-points. \* =  $p < 0.05$

**Figure 5.** Correlation plots between amyloid- $\beta_{1-42}$  CSF levels and MEP amplitude changes, expressed as percentage of baseline, induced by A) SICI at 2 ms ISI, B) ICF at 10 ms ISI, C) LICI at 100 ms ISI, D) SICF at 1.5 ms ISI and E) at 2.7 ms ISI.

MEP = motor evoked potential; SICI = short interval intracortical inhibition; ISI = interstimulus interval; ICF = intracortical facilitation; LICI = long interval intracortical inhibition; SICF = short intracortical facilitation.

**A****B****C****D****E****F**

**A****B****C****D****E****F**

**A****0 min after iTBS****B****15 min after iTBS****C****0 min after iTBS****D****15 min after iTBS**