



Methylation analysis of 79 patients with growth restriction reveals novel patterns of methylation change at imprinted loci

I. Karen Temple, Claire Louise Turner, Deborah Jg Mackay, Jonathan La Callaway, Louise E Docherty, Rebecca L Poole, Hilary Bullman, Margeret Lever, Bruce Castle, Emma C Kivuva, et al.

► To cite this version:

I. Karen Temple, Claire Louise Turner, Deborah Jg Mackay, Jonathan La Callaway, Louise E Docherty, et al.. Methylation analysis of 79 patients with growth restriction reveals novel patterns of methylation change at imprinted loci. *European Journal of Human Genetics*, 2010, n/a (n/a), pp.n/a-n/a. 10.1038/ejhg.2009.246 . hal-00506036

HAL Id: hal-00506036

<https://hal.science/hal-00506036>

Submitted on 27 Jul 2010

HAL is a multi-disciplinary open access archive for the deposit and dissemination of scientific research documents, whether they are published or not. The documents may come from teaching and research institutions in France or abroad, or from public or private research centers.

L'archive ouverte pluridisciplinaire **HAL**, est destinée au dépôt et à la diffusion de documents scientifiques de niveau recherche, publiés ou non, émanant des établissements d'enseignement et de recherche français ou étrangers, des laboratoires publics ou privés.

Running Title: methylation changes in growth restriction

Methylation analysis of 79 patients with growth restriction reveals novel patterns of methylation change at imprinted loci

CLS Turner^{1,2}, DJG Mackay^{2,3}, JLA Callaway^{2,3}, LE Docherty^{2,3}, RL Poole^{2,3}, H Bullman², M Lever², BM Castle², EC Kivuva⁴, PD Turnpenny⁴, SG Mehta⁵, S Mansour⁶, EL Wakeling⁷, V Mathew⁸, J Madden⁹, JH Davies¹⁰, IK Temple^{1,2,3}

1 Academic Unit of Genetic Medicine, School of Medicine, University of Southampton, Princess Anne Hospital, Coxford Road, Southampton SO16 5YA

2 Wessex Genetics Service, Southampton University Hospitals Trust, Southampton SO16 5YA and Salisbury Hospital NHS Foundation Trust, Salisbury SP2 8BJ

3 Division of Human Genetics, University of Southampton, Tremona Road, Southampton SO16 6YD

4 Peninsula Clinical Genetics Service, Royal Devon and Exeter Foundation NHS Trust, Gladstone Road, Exeter, EX1 2ED

5 Department of Medical Genetics, Addenbrookes Hospital, Hills Road Cambridge CB2 0QQ

6 SW Thames Regional Genetics Service, St George's, University of London, Tooting, London SW17 0RE

7 NW Thames Regional Genetics Service, North West London Hospitals NHS Trust, Watford Rd, Harrow HA1 3UJ

8 Department of Paediatrics, Hull Royal Infirmary, Hull, HU3 2JZ

9 Institute of Human Nutrition, University of Southampton, Tremona Road, Southampton SO16 6YD

10 Department of Child Health, Southampton University Hospital NHS Trust, Tremona Road, Southampton SO16 6YD

To whom correspondence should be addressed: Professor I K Temple

Academic Unit of Genetic Medicine, School of Medicine, University of Southampton, Princess Anne Hospital, Coxford Road, Southampton SO16 5YA

Telephone 023 8079 6170 Fax 023 8079 4346

Email: IKT@southampton.ac.uk

Abstract

This study was an investigation of 79 patients referred to the Wessex Regional Genetics Laboratory with suspected Russell-Silver Syndrome or unexplained short stature/intra uterine growth restriction, warranting genetic investigation. Methylation status was analysed at target sequences within eleven imprinted loci (*PLAGL1*, *IGF2R*, *PEG10*, *MEST1*, *GRB10*, *KCNQ1OT1*, *H19*, *IGF2P0*, *DLK1*, *PEG3*, *NESPAS*). 37% (29/79) of samples were demonstrated to have a methylation abnormality. The commonest finding was a loss of methylation at *H19* (23/29), as previously reported in Russell-Silver Syndrome. In addition, four of these patients had methylation anomalies at other loci, of whom two show hypomethylation of multiple imprinted loci, and two showed a complete gain of methylation at *IGF2R*. This latter finding was also present in five further patients who did not have demonstrable changes at *H19*. In total, 7/79 patients showed a gain of methylation at *IGF2R* and this was significantly different from a normal control population of 267 individuals ($p=0.002$). This study demonstrates the importance of widening the epigenetic investigation to include multiple imprinted loci and highlights potential involvement of the *IGF2R* locus in growth restriction.

Key words

Growth restriction

Russell-Silver syndrome

11p15 epimutation

H19

IGF2R

Hypomethylation of imprinted loci

Introduction:

Imprinted genes are of fundamental importance in normal human growth and development. Their expression is restricted in a parent-of-origin specific manner by epigenetic modifications, including DNA methylation and histone modification ¹.

A number of imprinting syndromes due to aberrant expression of imprinted genes have been described. These include transient neonatal diabetes (TND), Russell-Silver syndrome (RSS), Beckwith-Wiedemann syndrome (BWS), Prader-Willi syndrome, Angelman syndrome, Pseudohypoparathyroidism type 1b, maternal (also called Temple syndrome ²) and paternal UPD 14 related disorder. Though this list represents diverse phenotypes, there are common features: phenotypically, many are associated with disordered growth; molecularly, each may be caused by aberrant methylation at a differentially methylated region (DMR). In some of these conditions in addition to the site specific loss of methylation (LOM) associated with the disorder, LOM also occurs at diverse additional imprinted loci. This has been termed hypomethylation of multiple imprinted loci (HIL)³ and has been observed in BWS and TND. ³⁻⁵

RSS is characterised by pre- and post-natal growth restriction; other salient features include relative head sparing, a triangular face with prominence of the forehead, a low Body Mass Index (BMI), asymmetry, and feeding difficulties in infancy. RSS remains a difficult diagnosis to make due to clinical and (epi)genetic heterogeneity. Various clinical criteria have been proposed ^{6,7} but many of the features are relatively non-specific, and there is considerable phenotypic overlap between RSS, and low birth weight or short stature due to other causes. Furthermore, some of the features become less apparent with increasing age. Molecularly, two well described causes exist: LOM at *H19*, which is found in 30-60% of well defined cases ⁷⁻⁹, and maternal

uniparental disomy of chromosome 7 (mUPD7), which is found in around 5%⁷. The critical region on chromosome 7 contributing to the RSS phenotype has not yet been established, and there are currently three candidate imprinted regions (*MEST/PEG1*, *GRB10* and *PEG10* at which an isolated epigenetic change may conceivably lead to a RSS phenotype.

Maternal duplications of the ICR2 region on 11p15 are also implicated in a small number of RSS cases¹⁰⁻¹². Thus, within RSS there are clear subgroups, which may have discrete clinical implications. Furthermore, at least 30% of clinically diagnosed cases have no recognised cause.

In patients with RSS due to LOM at *H19*, HIL has not yet been observed; in mice LOM at *H19* can be accompanied by LOM at *DLK1*¹³ but a recent study examining methylation at four loci (*PLAGL1*, *DLK1*, *MEST*, *H19*) in RSS patients, found no additional LOM¹⁴.

The possibility that LOM at *H19*, or mUPD7 might not be specific to RSS and might be found in a proportion of patients with isolated pre- and postnatal growth retardation, has also been considered by others^{7,8,15,16}. Until recently, the conclusion in each of these studies was that mUPD7 and LOM at *H19* were restricted to those with typical RSS features. More recently, less typical patients have been reported¹⁷. Comprehensive methylation studies at other known DMRs have not yet been published in the cohort with atypical RSS.

We hypothesized that altered methylation patterns at the DMRs of imprinted genes on chromosome 7, or elsewhere, would be found in patients with growth restriction. Furthermore, given the observed HIL in some imprinting syndromes, we postulated

that additional LOM would be seen in patients with LOM *H19*, defining a new subgroup of patients.

Materials and Methods:

DNA samples from 79 patients referred to the Wessex Regional Genetics Laboratory with growth restriction were included in the study. There were two recruitment groups: the first consisted of 19 patients recruited into the Imprinting Disorders Finding Out Why? (IDFOW) study. This group were referred with growth restriction, where the referring geneticist felt there was a potential imprinting disorder. Detailed phenotypic information accompanied these referrals. The second group comprised 60 samples sent to the NHS laboratory for the routine genetic investigation of unexplained short stature/intrauterine growth retardation, or possible SRS, as the major reason for referral. This latter group were identified by a single observer searching the laboratory database of referrals for the period 2000 to 2008. An appropriate referral reason and sufficient DNA were prerequisite selection criteria. These samples were anonymised and linked to clinical data. 27 of the 60 were referred by NHS consultants in Clinical Genetics from the United Kingdom. The remaining 33 samples originated from local paediatricians.

Each recruitment group had its own ethics approval: the first group were adopted by the UK comprehensive local research network, and approved by Southampton and South West Hampshire Research Ethics committee 07/H0502/85; the second group were approved by the Salisbury Research Ethics Committee REC05/Q2008/52, but the approval did not allow us to go back to the patients or referring clinicians for more detailed phenotypic information.

The two recruitment arms generated four main categories of referral groups: RSS; SS sufficient to warrant genetic investigation; intrauterine growth retardation (IUGR); IUGR and unexplained short stature (SS).

DNA was extracted from peripheral blood lymphocytes by standard procedures. No additional tissue samples were available for this study.

Methylation status was analysed at target sequences within eleven imprinted loci (*PLAGL1*, *IGF2R*, *PEG10*, *MEST1*, *GRB10*, *KCNQ1OT1*, *H19*, *IGF2P0*, *DLK1*, *PEG3*, *NESPAS*). Genomic DNA was modified by bisulphite treatment (EZ DNA Methylation Kit; Zymo Research). Methylation-specific PCR (MS-PCR) was performed at these loci as previously described³. Previously undescribed MS-PCR primer sets are given in table 1. Each experiment was performed in duplicate. DNA methylation was calculated as the peak height ratio of unmethylated and methylated amplicons and normalised against normal controls (>4 per experiment). The methylation ratio is therefore the normalised unmethylated/methylated peak height ratio as exemplified in Fig 1. A complete gain of methylation is represented as '0'. Hypomethylation, ie. greater peak intensity for the unmethylated than the methylated amplicon, is represented by numbers >1. Hypermethylation ie. greater peak intensity for the methylated than the unmethylated amplicon, is represented by numbers <1.

A patient result was considered abnormal when it fell outside 3 standard deviations from the control mean normalised ratio.

This method has been published elsewhere^{3,18,19} and has been used to detect methylation changes at several loci. In order to further substantiate the methods for each loci analysed within this paper, separate experiments were performed using

control DNA derived from 126 normal controls (for *IGF2R* we used 267 controls). These experiments generated the standard deviation of the ratios, providing further evidence of reproducibility (table 3).

Abnormal results were confirmed using a separate bisulphited sample and also, in most cases, utilising a second methodology: for *H19*, *IGF2R*, *GRB10*, *PEG3* and *NESPAS*, pyrosequencing was performed, using standard methodology³ and with primers designed to be non overlapping with MS-PCR primer sequences; for *KCNQ1OT1* (and *H19*) a MLPA kit was used (obtained from MRC Holland <http://www.mlpa.com>).

Results:

The results of all 79 patients, their recruitment method and referral category are tabulated in table 2. The MS-PCR results of patients with novel imprinting signatures are given in table 3, and depicted in figure 1. Examples of corroboratory pyrosequencing assays are depicted in figure 2.

Of the 79 patients included in this study, 23 patients had LOM at *H19*, and 21 of these were referred with a clinical suspicion of RSS. The remaining two patients were referred with variable phenotypes and were recruited from the anonymised arm: one had IUGR and suffered from numerous chest infections; the other was a twin with IUGR, exomphalos, hypospadias, a cleft palate and a cardiac defect.

Of the 23 patients with LOM at *H19* there were two with additional widespread LOM (table 3). Of these, patient 1 had LOM involving *NESPAS/GNAS* and *PEG3*. This patient was born with a cleft lip and palate, and had a birth weight below the 0.4th

centile. By seven years of age, without the use of growth hormone, she had shown catch up growth with her height on the 25th centile. She was reported to have speech and language delay. This patient had a half sibling with BWS, and there was a family history of recurrent pregnancy losses (manuscript in preparation). The other patient (patient 2) had LOM at *IGF2R*, *H19*, *KCNQ1OT1*, *PEG10*, *GRB10* and *NESPAS*. This patient was one of monochorionic monoamniotic female twins with discordant growth. She was born at 31 weeks, with her birth weight on the 9th centile. She developed renal failure in the neonatal period due to renal dysplasia. Her height and weight at age four years were on the 2-9th centiles, with her head circumference on the 50th centile. Asymmetry was noted, and motor and speech milestones were met later than in her twin. DNA was not available from her twin.

Patients 3 and 4 had, in addition to LOM at *H19*, a complete gain of methylation (GOM) at *IGF2R*. Their clinical features are summarised in Table 4.

Of the 56 patients with no LOM at *H19*, one patient (patient 5) demonstrated LOM at *KCNQ1OT1* (chr11p15, DMR2), ordinarily associated with BWS. MLPA analysis of the 11p15 region did not reveal any copy number changes to account for the LOM at *KCNQ1OT1*. This female patient was born at 38 weeks gestation and weighed 2.03Kg (0.4th centile). Her mother had been diagnosed with polycystic ovarian syndrome, and the pregnancy was complicated by pre-eclampsia (from 34 weeks). In the neonatal period she developed hypoglycaemia and feeding problems with a poor suck. At seven years of age she had height and head circumference <0.4th centile, with her weight on the 3rd centile. She showed developmental delay, particularly affecting her speech and language.

In five patients (patients 6-10) the only epigenetic anomaly found was complete GOM at *IGF2R*. The known clinical features within this group are shown in table 4. The

incidence of GOM in our study population (7/79) was significantly higher than in an anonymised control population of unknown anthropometry (3/267: $p=0.002$ Fisher Exact).

Discussion

In this cohort of patients referred for investigation of RSS/unexplained growth restriction, 37% (29/79) of DNA samples demonstrated LOM at one or more imprinted loci. LOM at *H19* was the most common methylation anomaly in such patients. Most other studies have concluded that LOM at *H19* is very unlikely in those patients without features of RSS^{7,16 8,15}; however, in this series two patients with LOM at *H19* did not have a diagnosis of RSS clearly suggested on the referral details. They were both from the anonymised recruitment arm and therefore detailed phenotypic information has not been confirmed, but both were referred by clinical geneticists. In one of these patients there was a complex clinical picture and multiple congenital anomalies. It is possible that RSS had not been suspected clinically, due to the severity of comorbid features, or his young age.

We found HIL in 2/23 patients with LOM at *H19*, a phenomenon which was not observed in a previous study that tested a smaller number of DMRs¹⁴. These two patients are remarkable. Patient 1 had a half-sibling with BWS. Siblings with RSS and BWS due to underlying HIL have not been previously described, and this family probably represents a new genetic disorder. Patient 2 was one of discordant monozygous twins, which might be aetiologically relevant: the incidence of monozygotic twinning in BWS is increased^{20,21} and some of these demonstrate HIL²². Monozygous twins discordant for RSS have also been reported²³⁻²⁵; although, to our knowledge this latter group have not been investigated for HIL. We believe the

discovery of HIL in Patient 2 with growth restriction may represent a new aetiological group, with HIL arising as part of the twinning process.

With the exception of patient 2, who had LOM at *GRB10* and *PEG10* on chromosome 7 as part of a wider HIL, we did not detect epigenetic changes on chromosome 7 to account for the restricted growth in this cohort. These results corroborate those of another study that identified no methylation change at *MEST/PEG1* in 54 RSS patients²⁶. Taken with our own results this suggests that isolated imprinting abnormalities of *MEST1/PEG1*, *GRB10* and *PEG10* on chromosome 7 are not a common cause of growth retardation or RSS.

Surprisingly, this study has also revealed that LOM at *KCNQ1OT1*, previously associated with BWS, can be found in patients with growth restriction (patients 2 and 5). Recently there has been another report of LOM at *KCNQ1OT1* in 3 children without clinical BWS²⁷. In our study, although MLPA did not reveal a copy number change in the 11p15 region, we cannot exclude an atypical paternal duplication, or a maternal deletion: however, it is difficult to explain the phenotype of growth restriction in the context of the epigenetic result in these two patients. In patient 2, the HIL involving multiple loci, including *H19*, may have prevented a net overgrowth; yet, a similar pattern, with hypomethylation at both maternally- and paternally-methylated loci, was also seen in discordant twins with BWS²². The modest changes in methylation at multiple loci in patient 2 may reflect a dilutional effect resulting from circulation sharing with her twin. For patient 5, we did not demonstrate HIL, though we cannot exclude hypomethylation of DMRs not analysed in this study.

The finding of a complete gain of methylation at *IGF2R* in 7/79 patients is also intriguing. This occurred significantly more commonly in the patients (cases) than in our control group ($p=0.002$ using Fisher's Exact test.)

Whilst the proliferative effects of IGF2 are mediated through the IGF1 receptor (IGF1R), the main function of the IGF2 receptor is anti-proliferative, achieved by clearing IGF2 from the circulation²⁸. Not surprisingly therefore, *Igf2r* knockout mice are up to 30% larger than wild type mice²⁹⁻³¹. The expression of human and mouse *IGF2R* differs: in mice, *Igf2r* imprinted expression is observed in all fetal and adult tissues; in humans, *IGF2R* imprinted expression has not been found in adult tissues, but has been found in fetal tissues and Wilms' tumours, in a proportion of samples tested³². There is also a difference in the DMRs between these two species: DMR1, in the promoter of the *Igf2r* gene, occurs only in mice; DMR2 occurs in both species and is located in intron 2, methylated on the maternal allele. In mice the DMR2 acts as a promoter for *Air*, a non-coding RNA, which is antisense to *Igf2r*. Maternal methylation of DMR2 silences maternal *Air*, allowing monoallelic maternal expression of *IGF2R*. There is now some evidence of a human *Air* homologue³³. Given this control and expression pattern, we hypothesised that a gain of methylation at DMR2 in humans might increase the expression of *IGF2R* (at a critical stage of embryonic development), which could lead to a decrease in circulating IGF2, and so decreased growth. The opposite epigenetic modification, in the form of demethylation of the DMR2 of *Igf2r*, leads to overgrowth of sheep³⁴. Furthermore, in humans a partial demethylation of DMR2 was detected in one of 55 patients with idiopathic overgrowth, and was associated with a decreased serum IGF2R level and decreased IGF2 binding, at age three years³⁵. We are not able to go back to the patients in this study to compare clinical findings in this subgroup with the rest of the cohort, or test IGF2 levels. The available clinical details reveal failure to thrive and

post natal growth retardation, with or without prenatal growth retardation (table 4). The findings at *IGF2R* warrant further investigation and may have highlighted a novel subset of growth retarded individuals.

The main limitation of this study is the minimal phenotypic information available on the 60 individuals within the anonymised cohort. It is recognised that referral cards can be difficult to interpret and this may limit our epigenotype-phenotype correlations; however, almost half of this group originated from Clinical Geneticists who may provide more reliable referral details. Furthermore, this group does reflect routine clinical practice, being drawn from unselected referrals to a service laboratory of patients with growth restriction. Thus, this study mirrors the real difficulty of diagnosing RSS in the clinic: in many instances, whilst doctors know there is definite intrauterine growth retardation and or short stature, there may be uncertainty about the presence of other RSS features, some of which evolve with time.

We believe this is the most extensive molecular study of its kind, analysing 11 DMRs in individuals with suspected RSS or growth retardation. We report new cases of HIL in patients with LOM at *H19*. We have ascertained further patients with LOM at *KCNQ1OT1* who do not have clinical BWS. Whilst we did not identify the loci on chromosome 7 that may account for the growth restriction observed in maternal UPD7, we did identify a potentially important change involving *IGF2R*. We believe this study warrants confirmation prospectively alongside accurate clinical phenotyping.

Addendum

During the review process, Azzi et al.³⁶ also published evidence that some patients with RSS have hypomethylation involving multiple imprinted loci. Interestingly, they reported the involvement of different loci, which may indicate that more than one mechanism may be involved.

Acknowledgements

We thank the referring physicians and families for their participation. The study was funded by a Fellowship grant from *Ipsen*, awarded to C L S Turner.

Table 1: Previously undescribed primer sets, for loci *IGF2R*, *PEG10* and *IGF2P0*

	MS-PCR primers: genomic sequence (NCBI build 36.1)	"methylated" primer amplicon size (bp)	"unmethylated" primer	common (fam-labelled) primer
IGF2R 6q27	Chr6:160,346,341- 160,346,523	GAGGAGG CG AGGGG CGCGGCG AGG CGGC 256	G tGtGG AGGGGTATGAGGAGG tGAGGGGtGtGGtG 270	CCATTCTCTCCCCTCCCCAACTACAACCTTCC
PEG10 7q21	chr7:94,123,695- 94,123,917	CG AGTTTGG CG AAAGGTT CG TTGAGCGGGTTG TC 224	GT GAAAGGTT TG TTGAG TGGG TTGT TG TTTGGAG 216	CTAAAATACTACTCCATCTCCCRCAACTCCC
IGF2P0 11p15	chr11:2,126,061- 2,126,227	GtttG AC GAGGTTAGTGAGGG ACGGCG 155	ATAGTTTTGTTTGA TG AGGTTAGTGAGGG ATGGTG 164	CCAAAACAATTTCCCTAAAAATACTCATTTCATAC

Table 4: The phenotypic features of patients with GOM at *IGF2R*

Patient	Methylation status at <i>H19</i>	Birth weight centile	Other features
3	LOM	Not known	Not known
4	LOM	Not known	Asymmetry, mild developmental delay, ventricular septal defect.
6	Normal	2 nd	Growth failure from 3 months. Age 19/12 <0.4 th centile for height; OFC 2 nd centile. Normal development, mild concern regarding speech.
7	Normal	<0.4 th	Feeding difficulties, micrognathia. Delayed dental eruption, vitiligo and anterior chamber dysgenesis. Age 10 years, height remains <0.4 th centile.
8	Normal	Not known but referred with IUGR	0.4 th centile at time of referral
9	Normal	50 th	Developed unexplained short stature
10	Normal	<0.4 th	Assisted conception; <0.4 th centile for weight at term and <0.4 th centile at 3.5 years; developmental delay but minimal dysmorphic features

Title and Legend to Figures

Figure 1: Electropherograms of methylation-specific PCR amplicons.

Top row, patient 1; second row, patient 2; bottom row left, patient 5, bottom row right, patient 7. In each case an upper electropherogram represents the result from a control within the same experiment, and the lower electropherogram the result from the patient. The amplicon is identified above each panel, as are the methylated and unmethylated peaks (marked in red or blue for maternal or paternal origin, respectively). Presence of both peaks at equivalent abundance to the normal control is consistent with a normal methylation profile; reduction of the methylated peak height indicates relative hypomethylation at this site in a patient.

Figure 2: Results of allele quantification of bisulfite-induced C/T polymorphisms by pyrosequencing; examples of pyrograms.

Successive columns illustrate a normal control, and patients. Successive rows illustrate the H19, PEG3, GRB10, NESPAS and IGF2R DMRs. Each table cell contains two images: on the left, the first C/T polymorphism of the pyrosequencing reaction, and on the right, a bisulfite conversion control from the same pyrosequencing reaction (a C nucleotide not within a CpG dinucleotide, which would be expected to undergo 100% C>T conversion). NA: Not available; for some assays no suitable cytosine was available to act as a conversion control. Figures above each image indicate the proportions of methylated and unmethylated product present at that position; alleles measured at 5% or less of total are indistinguishable from zero, owing to imprecise quantification at this level.

Table 1: Previously undescribed primer sets, for loci *IGF2R*, *PEG10* and *IGF2P0*

Table 2: Summary of results, recruitment method and referral category for all patients.

Table 3: Summary of results in the 10 patients with unusual methylation studies.

The average methylation ratio for each patient is shown corrected to two decimal places. Complete gain of methylation is '0'. Hypomethylation, ie. greater peak intensity for the unmethylated than the methylated amplicon, is represented by numbers >1.

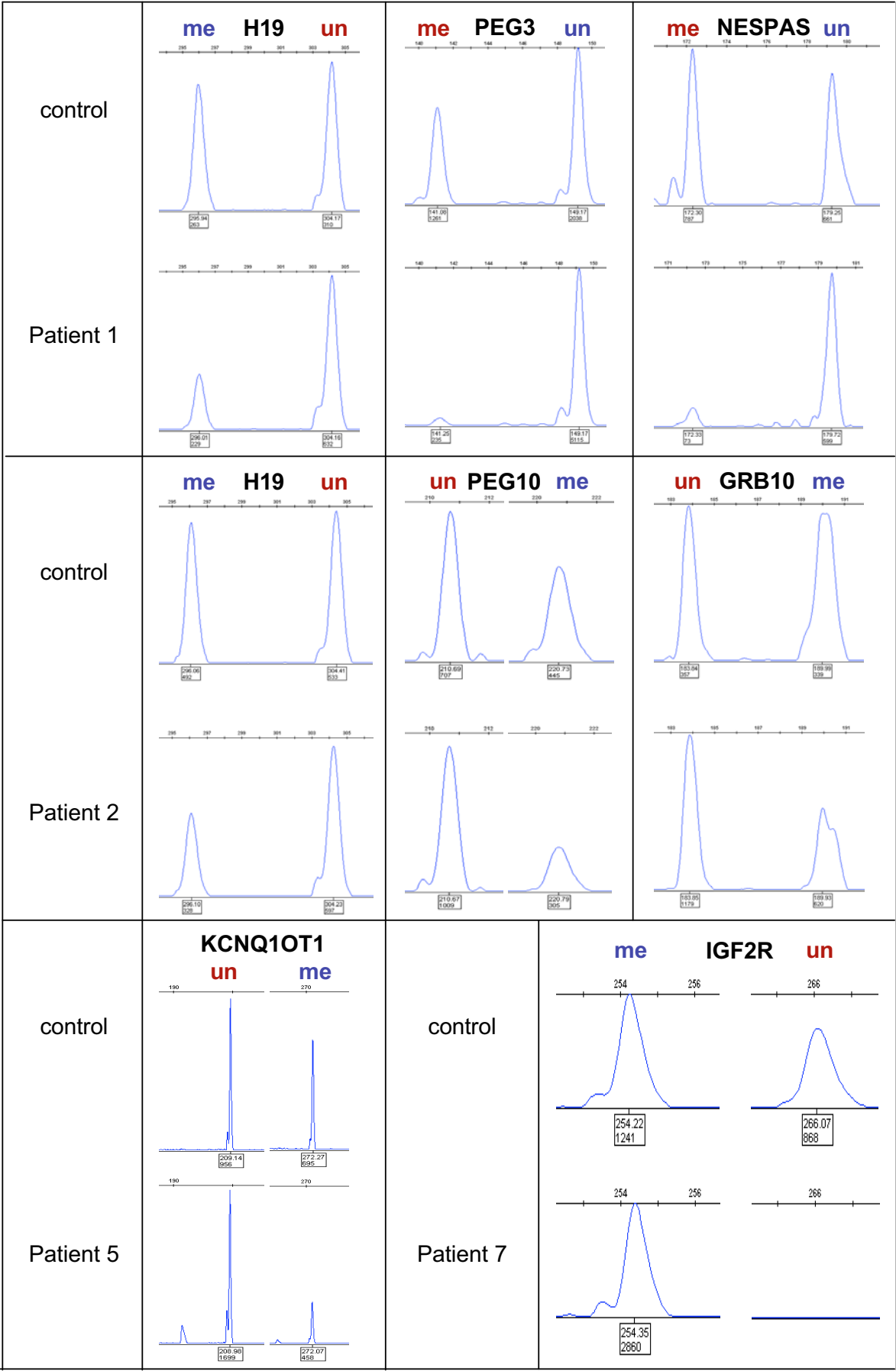
Atypical ratios for *IGF2R*, *GRB10*, *KCNQ1OT1*, *H19*, *PEG3* and *NESPAS* were confirmed using at least two bisulphite treatments as well as independent assays: pyrosequencing, MLPA, or a second MS-PCR interrogating different CpG dinucleotides in the same differentially-methylated region.

References

- 1 Reik W, Walter J: Genomic imprinting: parental influence on the genome. *Nat Rev Genet* 2001; **2**: 21-32.
- 2 Buiting K, Kanber D, Martin-Subero JJ *et al*: Clinical features of maternal uniparental disomy 14 in patients with an epimutation and a deletion of the imprinted DLK1/GTL2 gene cluster. *Hum Mutat* 2008; **29**: 1141-1146.
- 3 Mackay DJ, Callaway JL, Marks SM *et al*: Hypomethylation of multiple imprinted loci in individuals with transient neonatal diabetes is associated with mutations in ZFP57. *Nat Genet* 2008; **40**: 949-951.
- 4 Blik J, Verde G, Callaway J *et al*: Hypomethylation at multiple maternally methylated imprinted regions including PLAGL1 and GNAS loci in Beckwith-Wiedemann syndrome. *Eur J Hum Genet* 2008; **17**: 611-619.
- 5 Rossignol S, Steunou V, Chalas C *et al*: The epigenetic imprinting defect of patients with Beckwith-Wiedemann syndrome born after assisted reproductive technology is not restricted to the 11p15 region. *J Med Genet* 2006; **43**: 902-907.
- 6 Price SM, Stanhope R, Garrett C, Preece MA, Trembath RC: The spectrum of Silver-Russell syndrome: a clinical and molecular genetic study and new diagnostic criteria. *J Med Genet* 1999; **36**: 837-842.
- 7 Netchine I, Rossignol S, Dufourg MN *et al*: 11p15 imprinting center region 1 loss of methylation is a common and specific cause of typical Russell-Silver syndrome: clinical scoring system and epigenetic-phenotypic correlations. *J Clin Endocrinol Metab* 2007; **92**: 3148-3154.
- 8 Bartholdi D, Krajewska-Walasek M, Ounap K *et al*: Epigenetic mutations of the imprinted IGF2-H19 domain in Silver-Russell syndrome (SRS): results from a large cohort of patients with SRS and SRS-like phenotypes. *J Med Genet* 2009; **46**: 192-197.
- 9 Bruce S, Hannula-Jouppi K, Peltonen J, Kere J, Lipsanen-Nyman M: Clinically distinct epigenetic subgroups in Silver-Russell syndrome: the degree of H19 hypomethylation associates with phenotype severity and genital and skeletal anomalies. *J Clin Endocrinol Metab* 2009; **94**: 579-587.
- 10 Fisher AM, Thomas NS, Cockwell A *et al*: Duplications of chromosome 11p15 of maternal origin result in a phenotype that includes growth retardation. *Hum Genet* 2002; **111**: 290-296.
- 11 Eggermann T, Meyer E, Obermann C *et al*: Is maternal duplication of 11p15 associated with Silver-Russell syndrome? *J Med Genet* 2005; **42**: e26.
- 12 Schonherr N, Meyer E, Roos A, Schmidt A, Wollmann HA, Eggermann T: The centromeric 11p15 imprinting centre is also involved in Silver-Russell syndrome. *J Med Genet* 2007; **44**: 59-63.
- 13 Kato Y, Kaneda M, Hata K *et al*: Role of the Dnmt3 family in de novo methylation of imprinted and repetitive sequences during male germ cell development in the mouse. *Hum Mol Genet* 2007; **16**: 2272-2280.
- 14 Schonherr N, Meyer E, Binder G, Wollmann HA, Eggermann T: No evidence for additional imprinting defects in Silver-Russell syndrome patients with maternal uniparental disomy 7 or 11p15 epimutation. *J Pediatr Endocrinol Metab* 2007; **20**: 1329-1331.
- 15 Eggermann T, Meyer E, Caglayan AO, Dundar M, Schonherr N: ICR1 epimutations in 11p15 are restricted to patients with Silver-Russell syndrome features. *J Pediatr Endocrinol Metab* 2008; **21**: 59-62.
- 16 Schonherr N, Meyer E, Eggermann K, Ranke MB, Wollmann HA, Eggermann T: (Epi)mutations in 11p15 significantly contribute to Silver-Russell

- syndrome: but are they generally involved in growth retardation? *Eur J Med Genet* 2006; **49**: 414-418.
- 17 Eggermann T, Gonzalez D, Spengler S, Arslan-Kirchner M, Binder G, Schonherr N: Broad clinical spectrum in Silver-Russell syndrome and consequences for genetic testing in growth retardation. *Pediatrics* 2009; **123**: e929-931.
 - 18 Meyer E, Lim D, Pasha S *et al*: Germline mutation in NLRP2 (NALP2) in a familial imprinting disorder (Beckwith-Wiedemann Syndrome). *PLoS Genet* 2009; **5**: e1000423.
 - 19 Lim D, Bowdin SC, Tee L *et al*: Clinical and molecular genetic features of Beckwith-Wiedemann syndrome associated with assisted reproductive technologies. *Hum Reprod* 2009; **24**: 741-747.
 - 20 Berry AC, Belton EM, Chantler C: Monozygotic twins discordant for Wiedemann-Beckwith syndrome and the implications for genetic counselling. *J Med Genet* 1980; **17**: 136-138.
 - 21 Weksberg R, Shuman C, Caluseriu O *et al*: Discordant KCNQ1OT1 imprinting in sets of monozygotic twins discordant for Beckwith-Wiedemann syndrome. *Hum Mol Genet* 2002; **11**: 1317-1325.
 - 22 Blik J, Alders M, Maas S *et al*: Lessons from BWS twins: complex maternal and paternal hypomethylation and a common source of haematopoietic stem-cells. *European Journal Human Genetics* 2009.
 - 23 Yamazawa K, Kagami M, Fukami M, Matsubara K, Ogata T: Monozygotic female twins discordant for Silver-Russell syndrome and hypomethylation of the H19-DMR. *J Hum Genet* 2008; **53**: 950-955.
 - 24 Bailey W, Popovich B, Jones KL: Monozygotic twins discordant for the Russell-Silver syndrome. *Am J Med Genet* 1995; **58**: 101-105.
 - 25 Samn M, Lewis K, Blumberg B: Monozygotic twins discordant for the Russell-Silver syndrome. *Am J Med Genet* 1990; **37**: 543-545.
 - 26 Schoherr N, Jager S, Ranke MB, Wollmann HA, Binder G, Eggermann T: No evidence for isolated imprinting mutations in the PEG1/MEST locus in Silver-Russell patients. *Eur J Med Genet* 2008; **51**: 322-324.
 - 27 Gomes MV, Huber J, Ferriani RA, Amaral Neto AM, Ramos ES: Abnormal methylation at the KvDMR1 imprinting control region in clinically normal children conceived by assisted reproductive technologies. *Mol Hum Reprod* 2009; **15**: 471-477.
 - 28 Braulke T: Type-2 IGF receptor: a multi-ligand binding protein. *Horm Metab Res* 1999; **31**: 242-246.
 - 29 Ludwig T, Eggenschwiler J, Fisher P, D'Ercole AJ, Davenport ML, Efstratiadis A: Mouse mutants lacking the type 2 IGF receptor (IGF2R) are rescued from perinatal lethality in Igf2 and Igf1r null backgrounds. *Dev Biol* 1996; **177**: 517-535.
 - 30 Wang ZQ, Fung MR, Barlow DP, Wagner EF: Regulation of embryonic growth and lysosomal targeting by the imprinted Igf2/Mpr gene. *Nature* 1994; **372**: 464-467.
 - 31 Lau MM, Stewart CE, Liu Z, Bhatt H, Rotwein P, Stewart CL: Loss of the imprinted IGF2/cation-independent mannose 6-phosphate receptor results in fetal overgrowth and perinatal lethality. *Genes Dev* 1994; **8**: 2953-2963.
 - 32 Xu YQ, Grundy P, Polychronakos C: Aberrant imprinting of the insulin-like growth factor II receptor gene in Wilms' tumor. *Oncogene* 1997; **14**: 1041-1046.
 - 33 Yotova IY, Vlatkovic IM, Pauler FM *et al*: Identification of the human homolog of the imprinted mouse Air non-coding RNA. *Genomics* 2008; **92**: 464-473.

- 34 Young LE, Fernandes K, McEvoy TG *et al*: Epigenetic change in IGF2R is associated with fetal overgrowth after sheep embryo culture. *Nat Genet* 2001; **27**: 153-154.
- 35 Gicquel C, Weiss J, Amiel J, Gaston V, Le Bouc Y, Scott CD: Epigenetic abnormalities of the mannose-6-phosphate/IGF2 receptor gene are uncommon in human overgrowth syndromes. *J Med Genet* 2004; **41**: e4.
- 36 Azzi S, Rossignol S, Steunou V *et al*: Multilocus methylation analysis in a large cohort of 11p15-related foetal growth disorders (Russell Silver and Beckwith Wiedemann syndromes) reveals simultaneous loss of methylation at paternal and maternal imprinted loci. *Hum Mol Genet* 2009; **18**: 4724-4733.



	control		patient 1		patient 2	
	CpG site 1	bisulphite control	CpG site 1	bisulphite control	CpG site 1	bisulphite control
H19	 T C	NA	 T C	NA	 T C	NA
PEG3	 C T	 T C	 C T	 T C	 C T	 T C
GRB10	 G A	 A G A	 G A	 A G A	 G A	 A G A
NESP-AS	 G A	 A G	 G A	 A G	 G A	 A G
	control		patient 6		patient 7	
IGF2R	 C T	NA	 C T	NA	 C T	NA

Results of allele quantification of bisulfite-induced C/T polymorphisms by pyrosequencing; examples of pyrograms. Successive columns illustrate a normal control, and patients numbered as in Table 3. Successive rows illustrate the H19, PEG3, GRB10, NESPAS and IGF2R DMRs. Each table cell contains two images: on the left, the first C/T polymorphism of the pyrosequencing reaction, and on the right, a bisulfite conversion control from the same pyrosequencing reaction (a C nucleotide not within a CpG dinucleotide, which would be expected to undergo 100% C>T conversion). NA: Not available; for some assays no suitable cytosine was available to act as a conversion control. Figures above each image indicate the proportions of methylated and unmethylated product present at that position; alleles measured at 5% or less of total are indistinguishable from zero, owing to imprecise quantification at this level.

		Number of patients with loss of methylation at H19 DMR	Number of patients who in addition to H19 result showed	
Ascertainment cohort	Clinical referral category		methylation aberrations in at least one other locus (see table 3)	normal methylation at other loci (data not shown)
IDFOW (n=19)	SRS (n=6)	LOM 5 Normal 1	2 0	3 1
	IUGR and short stature (n=9)	LOM 0 Normal 9	NA 4	NA 5
	Short stature (n=4)	LOM 0 Normal 4	NA 1	NA 3
Anonymised (n=60)	SRS* (n=28)	LOM 16 Normal 12	2 0	14 12
	IUGR and short stature* (n=3)	LOM 1 Normal 2	0 1	1 1
	Short stature* (n=7)	LOM 0 Normal 7	NA 0	NA 7
	IUGR* (n=22)	LOM 1 Normal 21	0 0	1 21

IDFOW, patients recruited through the Imprinting Disorders Finding Out Why study in which detailed phenotypic information accompanied samples; SRS, Silver-Russell syndrome; IUGR, intra-uterine growth retardation; LOM, loss of methylation; NA, not applicable.

* The clinical referral categories for those individuals recruited as the anonymised cohort were derived from details given on referral cards, accompanying samples. Due to the potential inaccuracy in this phenotypic information, there is the possibility that an individual may have been inaccurately assigned to a given clinical category.

		Imprinted loci										
	Patient No.	PLAGL1 6q24	IGF2R 6q27	MEST1 7q32	GRB10 7p12	PEG10 7p21	KCNQ1OT1 11p15	IGF2P0 11p15	H19 11p15	DLK1 14q32	PEG3 19q13	NESPAS 20q13
Patients with LOM at H19	1	0.79	1.35	1.26	0.84	1.27	1.10	1.65	2.01	1.05	12.14	25.2
	2	0.99	1.80	1.21	2.20	1.90	1.90	0.99	1.60	0.85	1.10	1.67
	3	0.98	0.00	0.83	1.09	1.23	0.77	2.75	4.12	1.06	1.09	0.89
	4	0.92	0.00	0.69	1.10	1.21	0.68	3.01	3.41	1.20	1.12	0.84
Patients with no LOM at H19	5	0.95	1.13	0.99	1.06	1.20	2.28	0.66	1.08	0.90	1.09	0.97
	6	1.03	0.00	0.80	0.72	1.07	0.66	0.81	0.74	1.08	0.97	1.04
	7	1.09	0.00	0.99	0.95	1.02	1.12	1.04	1.12	0.89	1.02	0.74
	8	0.92	0.00	0.97	0.80	1.19	0.85	0.82	1.01	0.78	1.45	0.94
	9	0.80	0.00	0.87	0.56	0.68	1.20	0.90	0.82	0.67	0.95	0.76
	10	0.89	0.00	1.04	0.66	0.94	1.19	0.81	1.03	1.05	0.95	1.21
Control experiments	Standard deviation of mean ratio (-3SD to +3SD) n=126	0.16 (0.52-1.48)	0.23 (0.31-1.69) n=267	0.2 (0.4-1.6)	0.17 (0.49-1.51)	0.22 (0.34-1.66)	0.17 (0.49-1.51)	0.14 (0.58-1.42)	0.18 (0.46-1.54)	0.3 (0.1-1.9)	0.22 (0.34-1.66)	0.22 (0.34-1.66)