

Direct observation of Oersted-field-induced magnetization dynamics in magnetic nanostripes

Vojtech Uhlîr, Stefania Pizzini, Nicolas Rougemaille, Vincent Cros, Erika Jimenez, Laurent Ranno, Olivier Fruchart, Michal Urbanek, Gilles Gaudin, Julio Camarero, et al.

► **To cite this version:**

Vojtech Uhlîr, Stefania Pizzini, Nicolas Rougemaille, Vincent Cros, Erika Jimenez, et al.. Direct observation of Oersted-field-induced magnetization dynamics in magnetic nanostripes. *Physical Review B: Condensed matter and materials physics*, American Physical Society, 2011, 83, pp.020406. 10.1103/PhysRevB.83.020406 . hal-00453804v3

HAL Id: hal-00453804

<https://hal.archives-ouvertes.fr/hal-00453804v3>

Submitted on 13 Jan 2011

HAL is a multi-disciplinary open access archive for the deposit and dissemination of scientific research documents, whether they are published or not. The documents may come from teaching and research institutions in France or abroad, or from public or private research centers.

L'archive ouverte pluridisciplinaire **HAL**, est destinée au dépôt et à la diffusion de documents scientifiques de niveau recherche, publiés ou non, émanant des établissements d'enseignement et de recherche français ou étrangers, des laboratoires publics ou privés.

Direct observation of Oersted-field-induced magnetization dynamics in magnetic nanostripes

V. Uhlíř,^{1,2} S. Pizzini,¹ N. Rougemaille,¹ V. Cros,³ E. Jiménez,⁴ L. Ranno,¹ O. Fruchart,¹ M. Urbánek,² G. Gaudin,⁵ J. Camarero,⁴ C. Tieg,⁶ F. Sirotti,⁷ E. Wagner,¹ and J. Vogel^{1,*}

¹*Institut Néel, CNRS and UJF, BP166, 38042 Grenoble, France*

²*Institute of Physical Engineering, Brno University of Technology, 61669 Brno, Czech Republic*

³*Unité Mixte de Physique CNRS/Thales, Route départementale 128, 91767 Palaiseau cedex, France*

⁴*Dpto. Física de la Materia Condensada, Instituto “Nicolás Cabrera” and IMDEA-Nanociencia, Campus Universidad Autónoma de Madrid, 28049 Madrid, Spain*

⁵*SPINTEC, UMR8191, CEA/CNRS/UJF/GINP, INAC, 38045 Grenoble, France*

⁶*ESRF, BP200, 38043 Grenoble, France*

⁷*Synchrotron SOLEIL, L’Orme des Merisiers, Saint-Aubin, 91192 Gif-sur-Yvette, France*

We have used time-resolved x-ray photoemission electron microscopy to investigate the magnetization dynamics induced by nanosecond current pulses in NiFe/Cu/Co nanostripes. A large tilt of the NiFe magnetization in the direction transverse to the stripe is observed during the pulses. We show that this effect cannot be quantitatively understood from the amplitude of the Oersted field and the shape anisotropy. High frequency oscillations observed at the onset of the pulses are attributed to precessional motion of the NiFe magnetization about the effective field. We discuss the possible origins of the large magnetization tilt and the potential implications of the static and dynamic effects of the Oersted field on current-induced domain wall motion in such stripes.

The possibility to manipulate the magnetic configuration of nanostructures by using electrical currents is a recent, exciting development in spintronics. Electrical currents can affect the magnetization of magnetic nanostructures both through the charge and the spin of the conduction electrons. In recent years it has been shown that Spin-Transfer Torque (STT) [1, 2] and Rashba spin-orbit torque effects [3] act on the magnetization, in addition to the classical Oersted magnetic field (H_{Oe}). In general, the combination of these effects should be taken into account in the description of the magnetization dynamics during the application of a current pulse. For instance, it was shown that the contribution of the Oersted field and not only STT is needed to explain the magnetization reversal in trilayered pillars induced by a current flowing perpendicular to the plane of the layers [4, 5]. For in-plane currents, H_{Oe} has been invoked to explain magnetization reversal in mesoscopic NiFe/Cu/Co/Au bars [6] and the resonant depinning of constricted domain walls (DWs) in NiFe/Cu/Co trilayers [7].

Several studies of the effect of current pulses on the magnetization of nanostripes, mainly concerning current-induced domain wall motion (CIDM), have been based on the observation of the domain structure before and after the application of a current pulse [8, 9]. However, the effect of the Oersted field on the magnetization can only be investigated by direct, dynamic observations *during* the current pulses. This has been achieved in this work, using time-resolved x-ray magnetic circular dichroism combined with photoemission electron microscopy (XMCD-PEEM). Our results show that the current-induced field during nanosecond pulses causes both quasi-static and precessional effects on the NiFe magnetization. These effects may contribute to the

increased efficiency of current-induced domain wall motion observed in such trilayers [10–12].

Stacks of Cu(2nm)/Ni₈₀Fe₂₀(5nm)/Cu(5nm)/Co(5nm)/CoO(6nm) deposited on highly resistive Si(100) ($\rho > 300 \Omega \cdot \text{cm}$) were patterned in 400 nm wide zigzag stripes, with angles of 90° and 13 μm long straight sections, combining electron beam lithography and ion-beam etching. Contact electrodes made of Ti/Au were subsequently deposited using evaporation and a lift-off technique. Prior to the XMCD-PEEM measurements, most of the 2 nm Cu protective layer was removed in-situ using Ar-bombardment, to increase the XMCD signal of the NiFe layer.

XMCD-PEEM measurements were performed at the synchrotron SOLEIL (TEMPO beamline), using a Focus IS-PEEM. The magnetic configuration in the NiFe layer was imaged by measuring the Ni XMCD intensity, tuning the x-ray energy to the Ni L_3 absorption edge (852.8 eV). To optimize the magnetic contrast, the difference between two consecutive images obtained with 100% left- and right-circularly polarized x-rays was computed. For each circular polarization, 60 images of 0.5 s were summed, after correction for possible image drifts.

Temporal resolution was obtained by synchronizing nanosecond current pulses applied to the nanostripes with the SOLEIL 8-bunch mode, where photon bunches arrive at the sample with a repetition rate of 6.77 MHz. The temporal evolution of the magnetic configuration in the nanostripes was obtained by recording images for different delays between the current and photon pulses [13–16]. If events are reproducible and reversible for each current pulse, the temporal resolution of this pump-probe technique is limited only by the duration of the photon pulses (50–60 ps). The total acquisition time of 1

minute for each XMCD-image implies that sequences of about 4×10^8 current (pump) and photon (probe) pulses were averaged. In order to avoid electrical discharges, the voltage between the sample and the objective lens of the PEEM was set to 5.4 keV instead of the nominal 12 keV, limiting the spatial resolution to about $0.6 \mu\text{m}$.

Figure 1 shows a series of XMCD-PEEM images of the NiFe magnetization acquired during the application of bipolar current pulses [Fig. 1]. The positive/negative part of the pulse is about 2 ns/1 ns long, with a maximum amplitude of +7 mA/−9 mA. The latter value corresponds to a current density of $1.5 \times 10^{12} \text{ A/m}^2$ assuming a homogeneous current distribution in the stack. Before and after the current pulses, the magnetization is aligned along the stripe axis and no domain walls are present, leading to an almost homogeneous XMCD intensity [Fig. 1(a)]. During the current pulses, the NiFe magnetization tilts away from the wire axis, with a tilt angle φ_t . This tilt is anti-clockwise for a positive and clockwise for a negative current direction, as can be inferred from the magnetic contrast in the differently oriented sections of the nanowire [Figs. 1(d) and (g)]. The approximate magnetization directions in two of the wire sections are indicated before the current pulses (a), and at the end of the plateau of the positive (d) and negative part of the pulses (g). In (d) and (g) also the electron flow directions are indicated. The delays between the beginning of the current pulse and the photon pulses at which the images were acquired are shown in Fig. 1(i) [17].

In order to obtain the tilt angle φ_t as a function of time during the current pulses [Fig. 1(i)], the normalized XMCD-intensity in the bends of the stripe was determined from the XMCD-PEEM images. The XMCD intensity is proportional to the cosine of the angle between the incoming x-rays and the local magnetization, thus for the bends $I_{\text{XMCD}} \propto M \cos(\varphi_t) \cos(\alpha)$, where M is the magnetization and α is the angle between the x-ray incidence direction and the sample surface. This angle is constant (25°) and we also suppose the magnetization vector has a constant amplitude. No change of the magnetic contrast due to current-induced heating was observed. At zero current, the magnetization is parallel to the stripe axis and thus $\varphi_t = 0^\circ$, giving $I_{\text{XMCD}} = M \cos(\alpha) = I_0$. Then φ_t can be determined from the different images by $\varphi_t = \arccos(I_{\text{XMCD}}/I_0)$.

The NiFe magnetization tilt induced by the transverse Oersted field is surprisingly large, with a value of about 75° at the end of the positive part of the pulse. For a soft magnetic material such as NiFe, the magnetization direction in a nanostripe is mainly determined by magnetostatic effects, which favor magnetization along the stripe axis. For a 5 nm thick, 400 nm wide stripe the transverse demagnetizing factor is about 0.023 [18]. In a first approximation, this would mean that a transverse field of $0.023 \times \mu_0 M_S \times \sin 75^\circ = 22 \text{ mT}$ (with $\mu_0 M_S = 1 \text{ T}$ for permalloy) would be required to obtain $\varphi_t = 75^\circ$.

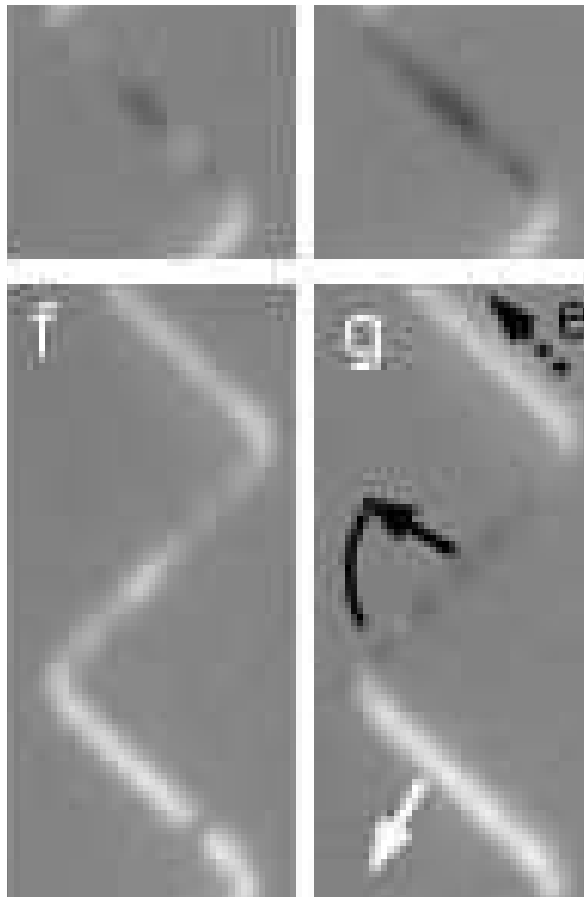


FIG. 1. (color online) Time-resolved XMCD-PEEM images of the NiFe layer of a 400 nm wide nanostripe at time delays of (a) 0 ns, (b) 0.35 ns, (c) 0.45 ns, (d) 1.9 ns, (e) 2.3 ns, (f) 2.4 ns, (g) 3.3 and (h) 3.6 ns with respect to the beginning of the positive part of the bipolar current pulse [17]. These delays are indicated on the bipolar pulse plotted in (i), together with the magnetization tilt angle φ_t at the beginning of the positive and negative parts of the pulse indicate magnetization precession about H_{Oe} .

The Oersted field inside a stripe with rectangular cross-section is given by $B_x = \mu_0 J z$, where J is the current density and z is the distance from the stripe axis. A current of +7 mA corresponds to a current density of $1.17 \times 10^{12} \text{ A/m}^2$, yielding an average field acting on the NiFe magnetization of $H_{Oe} = 7.4 \text{ mT}$ if we assume a homogeneous current distribution over the NiFe/Cu/Co trilayer structure, and 11 mT for a current flowing entirely through the Cu and Co layers. With a field of 11 mT, the expression given above yields a φ_t of only 28° instead of the observed 75° .

The most likely origin of the discrepancy between the observed and expected tilt angles is an overestimation of demagnetizing effects. The value of $\varphi_t = 28^\circ$ is obtained assuming that the tilt is homogeneous over the stripe width. In reality, the demagnetizing effect is much smaller in the center than at the edges of

the stripe, leading to a larger tilt angle in the center. We carried out micromagnetic simulations using the OOMMF code [19] to obtain the magnetization profile of a 400 nm wide, 5 nm thick layer of $\text{Ni}_{80}\text{Fe}_{20}$ and for $\text{NiFe}(5\text{nm})/\text{Cu}(5\text{nm})/\text{Co}(5\text{nm})$ trilayers under an Oersted field of 7.4 mT. The results obtained for NiFe (Co) using an exchange constant A of 1×10^{-11} J/m (3×10^{-11} J/m), a spontaneous magnetization $\mu_0 M_S$ of 1T (1.76T) and a vanishing magnetic anisotropy constant K , are shown in Fig. 2. The blue (black) continuous line shows the demagnetizing factor (φ_t) for a single Py layer, as a function of transverse position. The average tilt angle is 26.6° with a maximum of 32° in the center of the stripe. As shown by previous studies, edge roughness can lead to a decrease of the transverse demagnetizing factor of several tens of percent [20]. The simulated magnetization profile obtained by adding a random lateral roughness of 4-8 nm (1-2 grid cells) at the stripe edges (dotted black line) leads only to a slight increase of the average tilt angle (to about 30°). Edge roughness is therefore not sufficient to explain the large experimental tilt. A better quantitative agreement with experiments can be obtained by taking into account the presence of the Co layer. Magnetostatic interactions between the NiFe and Co layers can significantly decrease the transverse demagnetizing effects with respect to single NiFe wires. Part of the magnetic charges on the edges of the NiFe layer can be compensated by mirroring effects on the edges of the Co layer, as shown by micromagnetic simulations [21]. Moreover, if the current is centered in the Cu layer the Co magnetization tilt induced by H_{Oe} will be opposite to the one induced in the NiFe layer, further increasing the compensating effect of the Co magnetic charges. The average tilt angle obtained for the NiFe layer in the case of a NiFe/Cu/Co trilayer is around 69° , close to the experimental value, with a Co tilt angle (not shown) of about -42° . The NiFe magnetization tilt strongly depends on the Co tilt angle. In the simulations of Fig. 2, the magnetic anisotropy in the Co layer was taken to be zero, which is justified by the polycrystalline nature of the Co leading to the absence of an in-plane uniaxial anisotropy before patterning. A uniaxial Co anisotropy along the stripe axis of 50 kJ/m^3 would lead to a Co tilt angle of only -9° , and a NiFe tilt of 42° .

At the onset of the current pulse, fast oscillations of the magnetization are observed in the time-resolved images [Fig. 1(i)]. These oscillations are due to the precession of the magnetization about the effective field. Figure 3 shows contrast-enhanced XMCD-PEEM images of the bottom section of the nanostripe of Fig. 1. Inhomogeneities in the dipolar interactions with the Co layer and in edge roughness lead to inhomogeneous magnetic contrast in the sections of the spin-valve nanowire. Different parts of the nanowire oscillate with different initial phases of the precessional motion. The exchange interaction between the different parts, however, leads

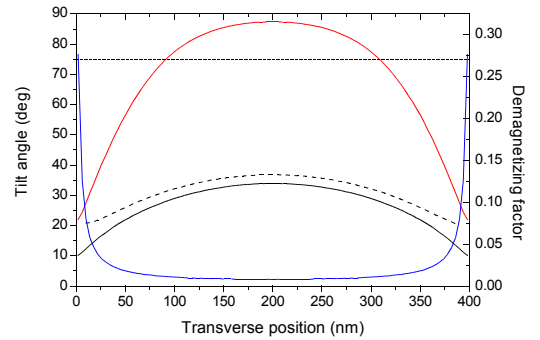


FIG. 2. (color online) NiFe magnetization tilt angle as a function of the transverse position inside a 400 nm wide stripe, obtained using the OOMMF code, for a transverse Oersted magnetic field of 7.4 mT. The experimental NiFe tilt angle is indicated with a dashed line. Different cases were considered : a single, 5 nm thick NiFe layer without edge roughness (black), a 5 nm thick NiFe with a random edge roughness of 4-8 nm (dotted black), and a NiFe(5nm)/Cu(5nm)/Co(5nm) trilayer (red). The demagnetization factor along the wire is also shown (blue, right y-axis)

to spatio-temporal variations of the magnetic contrast that resemble spin waves. The oscillatory and propagative nature of these contrast variations is more clearly visible in the accompanying movie [17]. The excitation of spin-waves by the Oersted field in spin-valve trilayers was predicted by Kim et al. [22] and spin-wave-like features were observed using Lorentz microscopy on 30 nm thick NiFe nanostripes upon current injection [23]. Further micromagnetic simulations are necessary to understand these oscillations quantitatively, but our results show that time-resolved XMCD-PEEM is a very suitable technique to observe such magnetization oscillations.

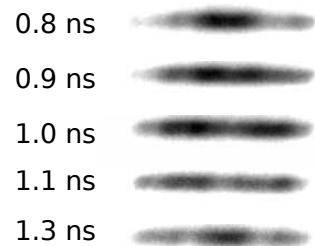


FIG. 3. Time-resolved XMCD-PEEM images of the lower, $13 \mu\text{m}$ long section of the nanostripe, taken at the indicated delays after the beginning of the positive part of the current pulse. Spatio-temporal variations of the XMCD contrast at a frequency of about 2 GHz are visible [17].

In quasi-static measurements performed on similar nanostripes we have observed that current pulses with a density above $1.5 - 2 \times 10^{12} \text{ A/m}^2$ can induce nucleation of reversed domains in initially saturated nanostripe sections [12]. Our present results suggest that the precession of the magnetization about H_{Oe} is possibly at the origin

of this local magnetization reversal, similar to the magnetization reversal [24] induced by transverse magnetic field pulses in magnetic nanostructures.

The magnetization tilt induced by the Oersted field and amplified by magnetostatic interactions should also have an influence on current-induced domain wall motion in such trilayers [10–12]. The amplified Oersted field might stabilize transverse domain walls having their magnetization parallel to H_{Oe} , like it was observed for field-induced domain wall motion in trilayer nanostripes in the presence of a transverse magnetic field [25, 26].

In conclusion, we provide direct, time-resolved microscopic evidence of the effect of current-induced fields on the magnetic configuration of magnetic nanostripes. We show that the combination of Oersted fields and strong dipolar interactions that may exist in nanostripes comprised of several metallic layers produce and amplify a large tilt of the magnetization. The quasi-static and precessional effects induced by the amplified Oersted field should be carefully considered when current pulses are applied to magnetic wires with different metallic layers, for instance to study current-induced domain wall motion. On the other hand, the effect of the Oersted field on magnetization reversal or magnetic domain wall motion in future spintronic devices can be tailored by tuning the thickness of the different metallic layers.

We acknowledge the invaluable technical and experimental help of P. Perrier, D. Lepoittevin, L. Delrey, S. Pairis, T. Fournier, A. Hrabec, M. Bonfim and W. Wernsdorfer. We thank A. Anane, J. Grollier and R. Mattana for experimental help and useful discussions. We thank the European Synchrotron Radiation Facility (ESRF), and in particular the staff of beamline ID08, where several preliminary experiments were carried out. Nanofabrication was performed at the ‘Plateforme de Technologies Avancées’ and at the Institut Néel/CNRS ‘Nanofab’ facility, both in Grenoble. E.J. and J.C. acknowledge financial support through projects HF2007-0071, S2009/MAT-1726, and CSD 2007-00010. V.U. was financially supported by grants No. MSM0021630508, No. KAN400100701 and No. 2E13800101-MSMT, and by the project INGO No. LA287 of the Czech Ministry of Education. This work was partially supported by the ANR-07-NANO-034 ‘Dynawall’.

* jan.vogel@grenoble.cnrs.fr; <http://neel.cnrs.fr/spip.php?rubrique52&lang=en>

[1] L. Berger, *J. Appl. Phys.* **55**, 1954 (1984).

[2] J. Slonczewski, *J. Magn. Magn. Mater.* **159**, L1 (1996).

[3] I. M. Miron, G. Gaudin, S. Auffret, B. Rodmacq, A. Schuhl, S. Pizzini, J. Vogel, and P. Gambardella, *Nature Mater.* **9**, 230 (2010).

[4] Y. Acremann, J. P. Strachan, V. Chembrolu, S. D. An-

draws, T. Tyliczszak, J. A. Katine, M. J. Carey, B. M. Clemens, H. C. Siegmann, and J. Stöhr, *Phys. Rev. Lett.* **96**, 217202 (2006).

- [5] K. Ito, T. Devolder, C. Chappert, M. J. Carey, and J. A. Katine, *J. Phys. D - Appl. Phys.* **40**, 1261 (2007).
- [6] D. Morecroft, I.A. Colin, F.J. Castaño, J.A.C. Bland, and C.A. Ross, *Phys. Rev. B* **76**, 054449 (2007).
- [7] P.J. Metaxas, A. Anane, V. Cros, J. Grollier, C. Deranlot, Y. Lemaître, S. Xavier, C. Ulysse, G. Faini, F. Petroff, and A. Fert, *Appl. Phys. Lett.* **97**, 182506 (2010).
- [8] A. Yamaguchi, T. Ono, S. Nasu, K. Miyake, K. Mibu, and T. Shinjo, *Phys. Rev. Lett.* **92**, 077205 (2004).
- [9] M. Kläui, P.O. Jubert, R. Allenspach, A. Bischof, J.A.C. Bland, G. Faini, U. Rüdiger, C.A.F. Vaz, L. Vila, and C. Vouille, *Phys. Rev. Lett.* **95**, 026601 (2005).
- [10] J. Grollier, P. Boulenc, V. Cros, A. Hamzic, A. Vaurès, A. Fert, and G. Faini, *Appl. Phys. Lett.* **83**, 509 (2003).
- [11] S. Pizzini, V. Uhlřř, J. Vogel, N. Rougemaille, S. Laribi, V. Cros, E. Jiménez, J. Camarero, C. Tieg, E. Bonet, M. Bonfim, R. Mattana, C. Deranlot, F. Petroff, C. Ulysse, G. Faini, and A. Fert, *Appl. Phys. Express* **2**, 023003 (2009).
- [12] V. Uhlřř, S. Pizzini, N. Rougemaille, J. Novotný, V. Cros, E. Jiménez, G. Faini, L. Heyne, F. Sirotti, C. Tieg, A. Bendounan, F. Maccherozzi, R. Belkhou, J. Grollier, A. Anane, and J. Vogel, *Phys. Rev. B* **81**, 224418 (2010).
- [13] F. Sirotti, S. Girlando, P. Prieto, L. Floreano, G. Panaccione, and G. Rossi, *Phys. Rev. B* **61**, R9221 (2000).
- [14] M. Bonfim, G. Ghiringhelli, F. Montaigne, S. Pizzini, N.B. Brookes, F. Petroff, J. Vogel, J. Camarero, and A. Fontaine, *Phys. Rev. Lett.* **86**, 3646 (2001).
- [15] J. Vogel, W. Kuch, M. Bonfim, J. Camarero, Y. Pennec, F. Offi, K. Fukumoto, J. Kirschner, A. Fontaine, and S. Pizzini, *Appl. Phys. Lett.* **82**, 2299 (2003).
- [16] G. Schönhense, H. J. Elmers, S. A. Nepijko, and C. M. Schneider, in: P. Hawkes (Ed.), *Adv. Imag. Electron Phys.* **142**, 159 (2006).
- [17] Movies with the complete image series corresponding to Figs. 1 and 3 can be found at <http://neel.cnrs.fr/spip.php?article2474>.
- [18] A. Aharoni, *J. Appl. Phys.* **83**, 3432 (1998).
- [19] OOMMF User’s Guide, Version 1.0, M.J. Donahue and D.G. Porter, Interagency Report NISTIR 6376, NIST, Gaithersburg, MD (Sept 1999)
- [20] R.D. Cowburn, D.K. Koltsov, A.O. Adeyeye, and M.E. Welland, *J. Appl. Phys.* **87**, 7067 (2000).
- [21] J. M. B. Ndjaka, A. Thiaville, and J. Miltat, *J. Appl. Phys.* **105**, 023905 (2009).
- [22] W.J. Kim, S.M. Seo, T.D. Lee, and K.J. Lee, *J. Magn. Magn. Mater.* **310**, 2032 (2007).
- [23] Y. Togawa, T.I. Kimura, K. Harada, T. Matsuda, A. Tonomura, Y. Otani, and T. Akashi, *Appl. Phys. Lett.* **92**, 012505 (2008).
- [24] H.W. Schumacher, C. Chappert, P. Crozat, R.C. Sousa, P.P. Freitas, J. Miltat, J. Fassbender, and B. Hillebrands, *Phys. Rev. Lett.* **90**, 017201 (2003).
- [25] M. T. Bryan, T. Schreffl, D. Atkinson, and D. A. Allwood, *J. Appl. Phys.* **103**, 073906 (2008).
- [26] S. Glathe, I. Berkov, T. Mikolajick, and R. Mattheis, *Appl. Phys. Lett.* **93**, 162505 (2008).