

# Importance of stream temperature to climate change impact on water quality

Agnès Ducharne

► **To cite this version:**

Agnès Ducharne. Importance of stream temperature to climate change impact on water quality. Hydrology and Earth System Sciences Discussions, European Geosciences Union, 2007, 4 (4), pp.2425-2460. hal-00330807

**HAL Id: hal-00330807**

**<https://hal.archives-ouvertes.fr/hal-00330807>**

Submitted on 25 Jul 2007

**HAL** is a multi-disciplinary open access archive for the deposit and dissemination of scientific research documents, whether they are published or not. The documents may come from teaching and research institutions in France or abroad, or from public or private research centers.

L'archive ouverte pluridisciplinaire **HAL**, est destinée au dépôt et à la diffusion de documents scientifiques de niveau recherche, publiés ou non, émanant des établissements d'enseignement et de recherche français ou étrangers, des laboratoires publics ou privés.

Papers published in *Hydrology and Earth System Sciences Discussions* are under open-access review for the journal *Hydrology and Earth System Sciences*

# Importance of stream temperature to climate change impact on water quality

A. Ducharne

Laboratoire Sisyphe, CNRS/Université Pierre et Marie Curie, Paris, France

Received: 17 July 2007 – Accepted: 20 July 2007 – Published: 25 July 2007

Correspondence to: A. Ducharne (agnes.ducharne@ccr.jussieu.fr)

**HESSD**

4, 2425–2460, 2007

## Stream temperature & climate change impact on water quality

A. Ducharne

Title Page

Abstract

Introduction

Conclusions

References

Tables

Figures

⏪

⏩

◀

▶

Back

Close

Full Screen / Esc

Printer-friendly Version

Interactive Discussion

## Abstract

The sensitivity of water quality to climate change was assessed in the Seine River (France) with the biogeochemical model RIVERSTRAHLER, which describes the transformations and fluxes of C, N, P and Si between the main microbiological populations, the water column and the sediment, along the entire river network. Point and diffuse sources are prescribed, stream temperature undergoes a sinusoidal annual cycle constrained by observations, and runoff is calculated by a physically-based land surface model. The reference simulation, using meteorological forcing of 1986–1990 and point sources of 1991, compares very well with observations. The climate change simulated by a general circulation model under the SRES emission scenario A2 was used to simulate the related changes in runoff and stream temperature. To this end, a statistical analysis was undertaken of the relationships between the water and air temperatures in the Seine watershed over 1993–1999, using 88 points that correctly sampled the variability of the tributaries. Most of stream temperature variance was explained by the lagged moving average of air temperature, with parameters that depended on Strahler stream order. As an interesting simplification, stream temperature changes could be approximated by air temperature changes. This modelling framework was used to analyse of the relative influence of the water warming and discharge reduction induced by climate change on water quality in Paris and downstream. Discharge reduction increased phytoplankton growth and oxygen deficits. Water warming decreased dissolved oxygen, increased phytoplankton biomass during the growth period, and reduced it afterwards, when loss factors dominate. It was also shown that these impacts were enhanced when point source inputs of nutrient and organic matter increased.

**HESSD**

4, 2425–2460, 2007

### Stream temperature & climate change impact on water quality

A. Ducharne

Title Page

Abstract

Introduction

Conclusions

References

Tables

Figures

⏪

⏩

◀

▶

Back

Close

Full Screen / Esc

Printer-friendly Version

Interactive Discussion

# 1 Introduction

Climate change impacts on river systems are the subject of active research (as reviewed by Arnell et al., 2001), because of the importance of water for human activities, in terms of resource (quantitatively and qualitatively) and risk factor. Impacts on hydrology include changes in runoff, river flow and groundwater storage. With respect to water quality, most climate change impacts can be attributed to changes in either discharge, which controls dilution and residence times, or in water temperature. When the latter increases, oxygen diffusion to the water column decreases, and biological activity is enhanced, with consequences on nutrients, organic matter and biomass. The impact of climate change on river water quality is also heavily dependent on the future evolution of human activities (pollutions, withdrawals, etc.), so that the direct effect of climate change may end up being small in relative terms (Hanratty and Stefan, 1998; Ducharne et al., 2007).

These issues are addressed here in the case study of the Seine River basin. It is a representative example of human influenced regional watersheds, and there is a wealth of research and background information to draw on, owing to the PIREN-Seine programme, a large interdisciplinary research program on the Seine River System, jointly funded since 1989 by the French CNRS and the Water Authorities of the Seine basin (Billen et al., 2007). The potential impacts of future changes of climate and anthropogenic pressures were compared there by Ducharne et al. (2007). To this end, four validated physically-based models, addressing separate components of the river system (agronomical model, hydrogeological model, land surface model and water quality model), were used sequentially to assess the relative impact of climate, land-use and point-source inputs on water quality. This study showed that the reduction of point-source inputs that can be postulated by the middle of the 21st century, following the ongoing trends to improved collection and treatment of wastewater, was the first-order driving factor of water quality over the 21st century, leading to a noticeable decrease in eutrophication and oxygen deficits downstream from Paris. The impact of climate

---

**Stream temperature  
& climate change  
impact on water  
quality**

A. Ducharne

---

Title Page

Abstract

Introduction

Conclusions

References

Tables

Figures

⏪

⏩

◀

▶

Back

Close

Full Screen / Esc

Printer-friendly Version

Interactive Discussion

change was only secondary and driven by the warming of the water column.

The present paper aims at providing a deeper insight with respect to the influence of water temperature to biogeochemical water quality in the context of climate change, using a simpler numerical framework (Sect. 3). After an overview of the Seine River basin during the reference period of 1986–1990 (Sect. 2), the selected climate change scenario and its impact on runoff are presented (Sect. 4). The way to account for the related water temperature changes is detailed in Sect. 5, and Sect. 6 provides an analysis of the relative influence of water warming and discharge changes on water quality in Paris and downstream, and how this influence is modulated by nutrient and organic matter loads.

## 2 The Seine River basin

This modelling work was conducted in the Seine River basin (78 600 km<sup>2</sup>) in the northern part of France (Fig. 1). The Seine River is 776 km long at Le Havre, its outlet to the Atlantic Ocean, but the estuary begins at Poses, 166 km upstream from Le Havre. The Seine River network is embedded in the sedimentary basin of Paris, with numerous aquifer layers, which are important to water resources and significantly sustain low flows. The altitude ranges from 0 to 856 m above sea level but 90% of the basin is below 300 m, so that the slopes of streams are moderate and climate does not exhibit sharp geographical gradients. The mean annual precipitation (750 mm/y over 1931–1960; AESN, 1976) is minimum in the centre of the basin (430 mm/y) and exceeds 850 mm/y in the coastal zone and the south-eastern hills (Morvan). Rainfall is very uniformly distributed throughout the year and snow influence is negligible, so that the hydrological regime of the Seine and its tributaries is a pluvial oceanic regime, modulated by the seasonal variations of evapotranspiration. This leads to high flows in winter and low flows in summer, sustained by base flow from the aquifer system and by the hydraulic management of the main tributaries.

As revealed by the land use map Corine Landcover version 1990 (EEA, 1996), which

## Stream temperature & climate change impact on water quality

A. Ducharne

Title Page

Abstract

Introduction

Conclusions

References

Tables

Figures

⏪

⏩

◀

▶

Back

Close

Full Screen / Esc

Printer-friendly Version

Interactive Discussion

results from the analysis of Landsat and Spot satellite images from 1987 to 1994, land use is dominated by agriculture, with arable land, grassland and woodland covering 51%, 18% and 25% respectively of the watershed. The Seine watershed (14% of the area of metropolitan France) gathers about 15 millions inhabitants (ca. 25% of the national population), but the population density is very heterogeneous. Most urban areas are concentrated along the main tributaries and the estuary, and the Parisian region (2500 km<sup>2</sup>) concentrates more than 10 millions inhabitants. The Seine watershed comprises 40% of the national industrial activities, also largely concentrated along the main tributaries and the estuary. To protect these areas, including Paris and the Parisian region, from disastrous floods such as experienced in 1910 or 1955, and to sustain low flows in summer, the construction of reservoirs upstream from Paris was initiated in the 1930's. The main three reservoirs presently operational have been constructed on the Aube, Marne and Seine rivers between 1966 and 1989 (Meybeck et al., 1998).

To summarize these features, the main water-related issue in the Seine watershed for the time being is not about water resources but water quality, which suffers from diffuse pollution from agriculture (nitrate, pesticides) and from point source pollution to rivers, because of the heavy urbanisation and related industrial activity.

### 3 Modelling of water quality in the Seine River

#### 3.1 The RIVERSTRAHLER model

The RIVERSTRAHLER model (Billen et al., 1994; Garnier et al., 1995; Garnier et al., 1999) calculates the spatial and seasonal variations of discharge, water quality and ecological functioning of an entire river network. It accounts for the constraints set by river morphology, hydrometeorology, diffuse sources from the watershed, and point source pollution from wastewater treatment plants (WTP) and industries. RIVERSTRAHLER describes the drainage network as a combination of three components: (i) in upstream basins, the river network is simplified as a regular scheme of confluence

## Stream temperature & climate change impact on water quality

A. Ducharne

Title Page

Abstract

Introduction

Conclusions

References

Tables

Figures

⏪

⏩

◀

▶

Back

Close

Full Screen / Esc

Printer-friendly Version

Interactive Discussion

of tributaries of increasing stream order, each characterised by mean morphological properties; (ii) in the main streams, the morphology is represented realistically, with a spatial resolution of 1 km; (iii) ponds or reservoirs are taken into account as mixed reactors connected to the other components.

5 Water quality is described in the entire river network by the concentrations of oxygen, nutrients ( $\text{NH}_4^+$ ,  $\text{NO}_3^-$ ,  $\text{PO}_4^{3-}$ , particulate inorganic phosphorus and  $\text{SiO}_2$ ), suspended solids and organic carbon (particulate and dissolved under three classes of biodegradability). Biological pools are represented by two taxonomic groups of phytoplankton (diatoms and non-diatoms), two kinds of zooplankton (rotifers and micro-crustaceans),  
10 heterotrophic and nitrifying bacteria. The exchanges of organic carbon, nutrients and oxygen across the sediment-water interface are also accounted for, as the impact of viruses and benthic filters, represented by constant rates modulated by temperature.

The set of equations describing the kinetics of these variables is known as the RIVE model. Under the assumption of unity of the aquatic continuum (Vannote et al., 1980),  
15 these kinetics are described with the same parameters from headwaters to the outlet, and these parameters are mostly set from direct experimental determination. Thus, the spatial-temporal variations of water quality are only controlled by the boundary conditions of the river network.

River flow, depth and velocity are estimated at the 10-day time step from runoff (expressed per unit area), routed as a function of river morphology using the Manning-Strickler formula. The composition of surface runoff and base flow, assumed constant  
20 over seasons, is characterised as a function of land use and lithology of the unit catchments, thus representing the diffuse sources to the river network. Water temperature and incoming radiation are described by a sinusoidal annual cycle constrained by recent observations. The latter is modulated by nebulosity and a water extinction coefficient  
25 to define the photosynthetically active radiation for phytoplankton growth.

## Stream temperature & climate change impact on water quality

A. Ducharne

Title Page

Abstract

Introduction

Conclusions

References

Tables

Figures

⏪

⏩

◀

▶

Back

Close

Full Screen / Esc

Printer-friendly Version

Interactive Discussion

## 3.2 Modelling of runoff and diffuse nitrate sources

The version of RIVERSTRAHLER used in this study was exactly the same as in Ducharne et al. (2007). In particular, important boundary conditions were provided by other models. The diffuse sources of nitrate were simulated by the STICS-MODCOU modelling chain (Ledoux et al., 2007), which couples a crop model to a hydrogeological model to describe nitrate leaching from agricultural soils and the resulting nitrate concentration, in base flow from the groundwater system and in surface runoff.

These two terms of runoff, used by RIVERSTRAHLER to derive river flow, are simulated by the catchment-based land surface model (CLSM; Koster et al., 2000; Ducharne et al., 2000). As all land surface models (LSMs), it is designed to simulate the diurnal cycle of land surface water and energy fluxes as a function of near-surface meteorology (precipitation, short-wave and long-wave incident radiation, surface pressure, air temperature and humidity at 2 m, wind speed at 10 m) and can either be coupled to a general circulation model (GCM) or used off-line as in the present study. The CLSM belongs to a new generation of LSMs which rely on the concepts of the hydrological model TOPMODEL (Beven and Kirkby, 1979) to account for lateral water fluxes along topography, their influence on the small scale variability of soil moisture, runoff and evapotranspiration, thus on larger scale water budget.

The simulated domain is discretised into unit hydrological catchments, all including a water table. Following TOPMODEL, a high-resolution digital elevation model (DEM) is used to characterise the distribution of a topographic index in each unit catchment. This distribution serves as a template to laterally redistribute the water table depth around its mean value, which varies in time as a result of the catchment water budget. The resulting water table distribution is used to partition the catchment into three fractions, each with a different moisture stress, and thus a different runoff and evapotranspiration, according to classic soil-vegetation-atmosphere transfer (SVAT) formulations. The water table distribution also controls the water fluxes to and from the water table, namely the exchanges with the root zone and the base flow to the streams.

## Stream temperature & climate change impact on water quality

A. Ducharne

Title Page

Abstract

Introduction

Conclusions

References

Tables

Figures

⏪

⏩

◀

▶

Back

Close

Full Screen / Esc

Printer-friendly Version

Interactive Discussion



### 3.3 Validation in 1986-1990

The Seine watershed upstream Poses was subdivided into 27 unit catchments, with an average size of 2600 km<sup>2</sup>. Catchment delineation and topographic index computation for the CLSM were based on a 100-m resolution DEM. Soil and vegetation properties were defined as in Ducharne et al. (2007). Surface runoff and base flow were simulated by the CLSM over five years (1986–1990), using meteorological forcing from the SAFRAN analysis, at a 1-h and 8-km resolution (Durand et al., 1993), interpolated by simple weighted means to the 27 unit catchments. The 10-day totals of surface runoff and base flow were provided to RIVERSTRAHLER which was run in the same 27 unit catchments, defining 14 upstream basins and 13 stream branches. RIVERSTRAHLER also described the main three regulation reservoirs constructed in the upstream part of the Seine, Aube and Marne watersheds, and their influence on the downstream streams.

Nitrate concentrations in groundwater and surface runoff were simulated using the STICS-MODCOU modelling chain, with land use (including crop rotations and technical calendars) representative of the decade 1990–2000 and meteorological data for 1970–1990, as provided by the SAFRAN analysis at the 1-day and 8-km resolution. Starting from zero nitrate in the groundwater, these boundary conditions were repeated for 50 years until nitrate concentration in the groundwater reached values that were representative of the ones actually surveyed in 2000. The resulting nitrate concentrations, in both groundwater and surface runoff, originally designed to provide the initial conditions for long-term simulations over the 21st century, were used as input to RIVERSTRAHLER, after being reduced to account for riparian retention. Because of the ongoing accumulation of nitrate in the groundwater, estimated as 0.64 mg l<sup>-1</sup> y<sup>-1</sup> by Ledoux et al. (2007), these underground diffuse sources were overestimated for the period 1986–1990 simulated here with RIVERSTRAHLER. As nitrate concentrations, however, were already too high to be limiting at this time, this error does not propagate to the other terms of the simulated water quality.

## HESSD

4, 2425–2460, 2007

### Stream temperature & climate change impact on water quality

A. Ducharne

Title Page

Abstract

Introduction

Conclusions

References

Tables

Figures

⏪

⏩

◀

▶

Back

Close

Full Screen / Esc

Printer-friendly Version

Interactive Discussion

**Stream temperature & climate change impact on water quality**

A. Ducharne

Title Page

Abstract

Introduction

Conclusions

References

Tables

Figures

⏪

⏩

◀

▶

Back

Close

Full Screen / Esc

Printer-friendly Version

Interactive Discussion

Point source inputs to the river network were described by the location and load of each point source along the river network in 1991, mapped from the data provided by the watershed agency, the Agence de l'Eau Seine-Normandie. These data are based on declarations to the agency, by territorial administrations for domestic sources (waste water treatment plants and direct discharge) and by industries according to their sector and declared level of activity. The last boundary conditions of RIVERSTRAHLER, water temperature and incoming radiation, were described by a sinusoidal annual cycle constrained by recent observations, as already mentioned.

The resulting simulation compares well with observed river quality parameters during 1986–1990, as illustrated in Paris and Conflans (Fig. 2). These two stations are only distant of 75 km on the Seine River, which is not influenced by any significant confluence between them (Fig. 1). As a result, they share a very similar discharge and water temperature. Simulated low flows are correctly sustained in dry years (1989 and 1990), and the contrast with the very large flood of winter 1988, an interesting sample of interannual variability, is satisfactorily reproduced, despite a trend to over-estimated high flows. The seasonal cycle of water temperature has a correct phase and amplitude, and does not exhibit any significant interannual variability during the five simulated years.

The main difference between Paris and Conflans is related to massive point source input between them, in particular from the Achères WTP, which collects the domestic effluents from 6 million inhabitants of the Paris conurbation. This explains the marked increase in nutrient and organic matter between the two stations, as illustrated by the phosphate and ammonium concentrations in Fig. 2. The increase in nutrient, together with the one of residence time in the river network, explains the higher phytoplankton biomass simulated in Conflans. This difference may be slightly overestimated by the model, but it must be noted that sampling frequency of chlorophyll *a*, used as a proxy to phytoplankton biomass (Garnier et al., 1995), is not sufficient to correctly capture the phytoplankton blooms. The increase in organic matter and ammonium between Paris and Conflans explains the much more severe oxygen deficits in Conflans, and

the differences between the two stations are well simulated by the model. Also well simulated is the influence of discharge on the concentrations of nutrient, organic matter and oxygen, shown by the highest nutrient concentrations and oxygen deficit during the summers of 1989 and 1990.

5 Further validation of this version of RIVERSTRAHLER was provided in Ducharne et al. (2007) at Poses, the most downstream station before entering the estuarine domain, thus downstream from Paris and the related point source input to the river. Among many other validation exercises, RIVERSTRAHLER, in a different but rather close version, was used to reconstruct the evolution of water quality in the Seine River over the  
10 last 50 years (Billen et al., 2001), providing ample evidence of its ability to reproduce observed variations of water quality variables under contrasting hydro-meteorological conditions.

## 4 Climate and runoff changes

### 4.1 GCM climate change scenario

15 Climate change was described using two 30-year simulations performed with the variable resolution GCM ARPEGE-IFS cycle 18 (Gibelin and Déqué, 2003). The global resolution was refined around the centre of the Mediterranean Sea (40° N; 12° E) leading to a resolution of about 50 km in the Seine watershed. The simulations corresponded to 1960–1989 and 2070–2099 and were driven by the SRES-A2 scenario of radiative forcing, leading to a GHG concentration equivalent to 850 ppm of CO<sub>2</sub> at the end of  
20 21st century. Sea surface temperatures (SSTs) were prescribed from monthly observations for the recent climate simulation. For the climate change simulation, these observations were blended with SSTs from ocean-atmosphere coupled simulations. The resulting global annual atmospheric warming at 2 m simulated between 1960–1989  
25 and 2070–2099 was 2.3°C.

Gibelin and Déqué (2003) also showed that the recent climate simulation reproduced

## Stream temperature & climate change impact on water quality

A. Ducharne

Title Page

Abstract

Introduction

Conclusions

References

Tables

Figures

⏪

⏩

◀

▶

Back

Close

Full Screen / Esc

Printer-friendly Version

Interactive Discussion

the main climate characteristics around the Mediterranean region, despite a winter overestimation of rainfall in north-western Europe. A specific validation was conducted in the Seine watershed over 1970–1989 (Ducharne et al., 2007). The 2-m temperatures were accurately simulated, but the wet bias of winter precipitation was confirmed, and led to an annual mean overestimation of +35%.

## 4.2 Downscaled climate change scenario

The near surface meteorological variables required as input to the CLSM to simulate runoff changes were available at the daily time step from the two GCM simulations. The spatial resolution of the GCM was sufficient compared to the one of the CLSM (44 GCM grid cells in the Seine watershed vs. 27 unit catchments) and spatial interpolation to the catchment space was simply performed by averaging the GCM outputs, using the intersection fractions between the GCM cells and the unit catchments as weights. It was necessary, however, to correct for the GCM biases, especially those in precipitation that propagate to runoff (Ducharne et al., 2003), and to downscale the GCM output to the hourly time step of the CLSM. As described in Ducharne et al. (2007), we used a simple technique for bias correction and downscaling, the perturbation method.

The reference, or baseline, scenario, called REF, is made of the entire SAFRAN meteorological forcing used for the validation simulation described in Sect. 3.3. This data set, with a 1-h time step, and interpolated to the 27 unit catchments of the CLSM from its native 8-km resolution, covers five years (1986–1990). This period was selected because hourly data were not available before August 1985, and we chose to exclude the 1990's decade, which was the hottest since 1860, and even likely during the last millennium (Houghton et al., 2001), and was probably not independent of climate change. Then, after interpolation of the GCM output to the 27 unit catchments, we computed the interannual monthly mean of each meteorological parameter, for both the climate change and recent climate GCM simulations. We defined monthly climate perturbations as the difference in interannual monthly mean for temperature and their ratio for the other parameters, and we applied these monthly perturbations to the baseline pa-

## Stream temperature & climate change impact on water quality

A. Ducharne

Title Page

Abstract

Introduction

Conclusions

References

Tables

Figures

⏪

⏩

◀

▶

Back

Close

Full Screen / Esc

Printer-friendly Version

Interactive Discussion

rameters, to all time steps within the selected month.

On average over the watershed, the differences between the climate change scenario, called A2, and the reference scenario comprise an increase in near surface temperature, which amounts to  $+3.3^{\circ}\text{C}$  on annual mean and is systematic over the year, although more pronounced in summer (Fig. 3). In contrast, the annual mean precipitation does not change significantly ( $+0.1\%$ ) but this results from a trade-off between marked winter increase and summer decrease. Other changes include increased atmospheric radiation, as a result of increased greenhouse effect, and increased solar radiation in summer, by means of reduced rainfall and cloudiness. Combined to the temperature increase, they induce an increase in potential evapotranspiration (Ducharne et al., 2007).

### 4.3 Subsequent runoff change

The CLSM responds to this increased potential evapotranspiration by an increase in actual evapotranspiration ( $+5\%$  on interannual mean over the watershed). Note that the CLSM does not account for the possible reduction of stomatal conductance and transpiration because of the  $[\text{CO}_2]$  increase. Increased evapotranspiration drives a decrease of the watershed moisture in summer, which is enhanced by the seasonal decrease in precipitation, and propagates in winter, when it limits the impact of increased winter precipitation onto runoff. As a result, the CLSM simulates a decrease in mean runoff ( $-11\%$  over the watershed), with enhanced seasonal contrasts, consisting in a small increase in winter and a massive decrease in low flow periods, exceeding  $-35\%$  in July and October (Fig. 3).

## Stream temperature & climate change impact on water quality

A. Ducharne

Title Page

Abstract

Introduction

Conclusions

References

Tables

Figures

◀

▶

◀

▶

Back

Close

Full Screen / Esc

Printer-friendly Version

Interactive Discussion

## 5 Modelling of stream temperature change

### 5.1 Methods and data

If climate change impact on runoff can be simply simulated by the CLSM from a climate change scenario, a method was needed to estimate the related water temperature change. Following many authors (e.g. Stephan and Preud'homme, 1993; Webb and Nobilis, 1997; Caissie et al., 1998), we established a linear regression model between air temperature (AT) and water temperature (WT). These simple models, which highlight air temperature as a surrogate for changes in heat fluxes that affect the water surface, achieve to explain a high level of the water temperature variance. Because of the high heat capacity of water, water temperature variations often tend to lag behind those of air temperature. This effect was shown to be more pronounced in larger rivers (Stephan and Preud'homme, 1993) and can be explained by the convergence of water temperature towards equilibrium temperature (i.e. the temperature of the water mass when a stationary regime is achieved with the atmospheric conditions, so that there is no energy flux with the atmosphere anymore) as water flows downstream (Mohseni and Stefan, 1999).

The width and depth of streams tend to increase in the downstream direction and can be related to Strahler stream order, as performed in the upstream basins of RIVER-STRAHLER (Billen et al., 1994). In the Strahler ordering scheme (Strahler, 1957), stream order is 1 at the headwaters and increases toward the outlet of the watershed. When two  $n$ th order streams come together, they form an  $(n+1)$ th order stream, but the confluence with streams of lower order does not change the order of the highest order stream. The Strahler order of the Seine River network's tributaries was characterized using the Arcview 9.1 Geographical Information System, leading to a maximum order of 7 at the outlet (Fig. 1).

In an attempt to generalize the findings by Stefan and Preud'homme (1993), we established linear relationships between water temperature on the one hand and the lagged moving average of air temperature on the other hand, with parameters (slope

HESSD

4, 2425–2460, 2007

### Stream temperature & climate change impact on water quality

A. Ducharne

Title Page

Abstract

Introduction

Conclusions

References

Tables

Figures

⏪

⏩

◀

▶

Back

Close

Full Screen / Esc

Printer-friendly Version

Interactive Discussion

EGU

$a$ ,  $y$ -intercept  $b$ , and lag  $L$ ) that depended on Strahler stream order  $i$ :

$$WT = a_j \cdot m(AT, L_j) + b_j. \quad (1)$$

In the above equation, the moving average operator  $m$  gives the mean of  $AT$  over the  $L_j$  days that precede the measurement of  $WT$ . The dependence on stream order had the further advantage of being easily amenable to the spatial framework of the RIVERSTRAHLER model.

An important question when using a statistical model is its transferability to conditions that are different from the ones prevailing for the characterization of its parameters. These parameters need to be fitted locally, as they implicitly account for all the local characteristics that are not explicated by the model, so that they cannot be transferred to other geographical settings. The dependence on stream order that is demonstrated below is an interesting advance with this regard. In contrast, transferability to other periods is possible if the boundary conditions can be supposed stationary, which is of course not the case when dealing with climate change. As it is impossible to characterize parameters in climate change conditions, as they have not occurred yet, necessity leads us to look for the recorded period that is the closest to climate change conditions, namely the warmest. This study was thus performed for the period 1993–1999, as the 1990's decade was the hottest in history, and continuous records of hourly  $AT$  measurement from the synoptic network of Météo-France were available in 46 stations of the Seine River basin (Fig. 1).

$WT$  is recorded at sampling stations of the RNB (Réseau National de Bassins) network, where numerous other water quality parameters are monitored since 1971. The Seine River basin contains more than 1600 RNB stations, rather well distributed in the basin but the sampling frequency varies between 0 to 24 measures per year depending on years and stations. We selected  $WT$  stations in a 40-km radius from an  $AT$  station, with at least 12  $WT$  measurements per year for at least 5 years during the 7-year period of analysis, 1993–1999. As a result, 88  $WT$  stations were investigated in the Seine watershed, which correctly sampled the variability of the tributaries with respect to stream

## Stream temperature & climate change impact on water quality

A. Ducharne

Title Page

Abstract

Introduction

Conclusions

References

Tables

Figures

⏪

⏩

◀

▶

Back

Close

Full Screen / Esc

Printer-friendly Version

Interactive Discussion

order (Fig. 1, Table 1). The mean distance between AT and WT stations was 11.7 km, with a standard deviation of 6.8 km and a maximum of 36.5 km.

## 5.2 Results

For each of the 88 couples of AT-WT stations, linear regressions were performed between WT and the lagged moving average of AT, called lagged AT for simplicity in the rest of the paper, using different lags: 2, 3, 5, 7, 10 and 15 days. We first identified the lags that were maximizing the determination coefficient  $R^2$  between WT and lagged AT. The resulting  $R^2$  exceed 0.90 (respectively 0.95) in 93% (59%) of the cases (Fig. 4). This strong linear relationship between WT and lagged AT demonstrates that lagged AT explains most of the variance of WT. The fraction of WT variance that is not explained by lagged AT ( $1-R^2$ ) can be related to the measurements uncertainties, or to unaccounted physical factors, such as discharge variability (Webb et al., 2003), groundwater inflows, stream shading or impoundments (Erickson and Stefan, 2000), but this unexplained fraction is always small. Figure 4 also shows that the best  $R^2$  increase with Strahler order, as do the corresponding lags (see also Table 1), and that the variability of the best  $R^2$  is larger when resulting from small lags, thus at low Strahler orders. These results, which support the choice of the model proposed in Eq. (1), are very consistent with the convergence of WT toward equilibrium temperature as water flows downstream, which implies that the equilibrium temperature, approximated by lagged AT, explains more and more of the variance of WT as water flows downstream, thus as Strahler order increases.

For each of the 88 couples of AT-WT stations, we characterized the slope  $a$  and y-intercept  $b$  of the regression line between WT and lagged AT, using the best lag, defined as above as the one that maximizes  $R^2$ . As Strahler order increases, the slope  $a$  increases to values close to 1, the y-intercept  $b$  decreases, and the variability of these two parameters is markedly reduced (Fig. 5). Moreover,  $a$  and  $b$  are tightly related, as shown by their strong correlation coefficient ( $R=0.91$ ), and the scatter of this relationship does not exhibit a large dependence on Strahler order (Fig. 6).

### Stream temperature & climate change impact on water quality

A. Ducharne

Title Page

Abstract

Introduction

Conclusions

References

Tables

Figures

⏪

⏩

◀

▶

Back

Close

Full Screen / Esc

Printer-friendly Version

Interactive Discussion



**Stream temperature & climate change impact on water quality**

A. Ducharne

Title Page

Abstract

Introduction

Conclusions

References

Tables

Figures

⏪

⏩

◀

▶

Back

Close

Full Screen / Esc

Printer-friendly Version

Interactive Discussion

These regression analyses between observed WT and lagged AT are summarized in Table 1, which gives the means, for all the studied stations within the same Strahler order, of the best lags and corresponding  $R^2$ , and of the corresponding slopes  $a$  and  $y$ -intercepts  $b$ , defining the best linear function of lagged AT. It also gives the means by Strahler order of interesting measures of the fit between observed WT and these best linear functions of lagged AT. Biases are always negative and range between  $-0.56$  and  $0^\circ\text{C}$ , with a mean of  $-0.18^\circ\text{C}$  over the 88 couples of AT-WT stations. Root mean squared errors (RMSEs) range between  $0.79$  and  $1.86^\circ\text{C}$ , with a mean of  $1.18^\circ\text{C}$ , to be compared to a mean WT of  $12.62^\circ\text{C}$  over the 88 couples of AT-WT stations. The mean RMSEs and biases do not appear to depend on Strahler order, but mean WT temperature increases with Strahler order, so that the mean relative performance of the fitted relationships increases with stream order.

In an attempt to generalize the model given in Eq. (1), and to reduce the work required to define the parameters for a couple of AT-WT stations, we checked whether some of these parameters could be defined a priori based on the above results. For each Strahler order, we selected, among the 6 lag values previously tested (2, 3, 5, 7, 10 and 15 days), the closest one to the mean best lag. We defined  $a$  as the mean of the slopes corresponding to the selected lag, and we deduced  $b$  from the equation of the regression line between  $b$  and  $a$  (Fig. 6). The resulting values of lag,  $a$  and  $b$  in Table 1 are used for all the WT stations of a given Strahler order, using the AT measurements from the closest station. The indicators of the fit between WT calculated this way and observed WT compare very well with the same indicators applied to the relationships between observed WT and the best linear functions of lagged AT, with parameters that are optimized for each couple of AT-WT stations. The determination coefficient  $R^2$  are as good, and the biases are not markedly different ( $-0.20^\circ\text{C}$  on average over the 88 couples of AT-WT stations). The RMSEs are higher, especially at low Strahler orders, but the increase is moderate and the resulting RMSEs remain satisfactory, as illustrated by the mean RMSE of  $1.45^\circ\text{C}$  over the 88 couples of AT-WT stations.

### 5.3 Implications regarding climate change

Under the necessity assumption of their transferability to climate change conditions, these relationships can be used to deduce WT change from AT change under climate change. In particular, when  $a=1$ , the mean of WT change over several years is equal to the one of AT, as the effect of the lag becomes negligible over long time scales. This property was used to simplify the problem of WT change estimation from AT change under climate change. Table 1 shows that  $a$  is very close to 1 in streams with a Strahler order of 6 and 7. These are the main streams of the Seine River network (Fig. 1), where human and industrial density is by far the highest and where residence time in the river network has been long enough for phytoplankton biomass to have significantly developed (Garnier et al., 1995). These streams are thus the most vulnerable to biogeochemical water quality problems, such as algal blooms, eutrophication and oxygen depletion.

Assuming that a lesser accuracy in WT change could be accepted in smaller order streams, it was decided to generalize the simple case of  $a=1$  to the entire river network. This offers the advantage of an easy spatialization, as local AT changes, such as described in the 27 unit catchments used to subdivide the Seine watershed in the CLSM and RIVERSTRAHLER simulations, can be directly interpreted as WT changes. A disadvantage of this simplification, however, is that it prevents from describing the seasonal variations of WT change. AT change is higher in summer (Fig. 3), so that WT change is underestimated during this season, when the biogeochemical processes are the most intense because of their dependence to temperature. This inaccuracy is offset in small order streams (Strahler order  $<6$ ), where  $a < 1$ , so that WT change is overestimated if using  $a=1$ . Lower values in summer than those described under the assumption of linear relationship between WT and lagged AT might be realistic, however, because of the lesser variations of WT with respect to AT for extreme values of AT, leading to an S-shaped relationship, as revealed by Mohseni et al. (1998).

In conclusion, it is thought that the many uncertainties that accompany the transfer to

## Stream temperature & climate change impact on water quality

A. Ducharne

Title Page

Abstract

Introduction

Conclusions

References

Tables

Figures

⏪

⏩

◀

▶

Back

Close

Full Screen / Esc

Printer-friendly Version

Interactive Discussion

climate change conditions of statistical relationships established under present climate justify their simplified use. Therefore, the values of WT under climate change were deduced from their present time values (described by a sinusoidal annual cycle) by adding all the year long the mean increase in 2-m air temperature (+3.3°C) between the reference climate (1986–1990) and climate change scenario A2.

## 6 Modelling of climate change impact on water quality

### 6.1 Description of the simulations

Six simulations were performed with RIVERSTRAHLER to analyse the relative influence of water warming and discharge changes on water quality, and how this influence is modulated by nutrient and organic matter loads (Table 2). Simulation ACT corresponds exactly to the validation simulation described in Sect. 3.3, with point source input of year 1991. Simulation ACT+A2 differs from ACT in that it accounts for the influence of climate change scenario A2 on runoff, as simulated by the CLSM (Sect. 4.3), and on WT, using the simplified model of WT change described in Sect. 5.3. Simulation ACT+A2-Tw was designed to understand the role of water warming in the impact of climate change on the water quality simulated by RIVERSTRAHLER, and only keeps from climate change its impacts on runoff and river discharge, so that WT is the same as in simulation ACT. The corresponding impacts on river discharge and WT in Paris are shown in Fig. 7. As runoff, discharge is mainly reduced during the low flow period, with a mean decrease of –24% from May to December.

Simulation IWT differs from ACT by the point-source inputs to the streams, which are assumed to be reduced. As detailed in Ducharne et al. (2007), future point source pollution by 2050, of both domestic and industrial origin, was estimated following the assumptions embedded in scenario SRES-A2 regarding demographic, economic and technological changes. This led to reductions of 30 to 75% compared to 2000, depending on the pollutants. The technology efficiency, as estimated for 2050 from specialised

## Stream temperature & climate change impact on water quality

A. Ducharne

Title Page

Abstract

Introduction

Conclusions

References

Tables

Figures

⏪

⏩

◀

▶

Back

Close

Full Screen / Esc

Printer-friendly Version

Interactive Discussion

technological prospective and experts interviews, was found to be the primary driver of this evolution. This scenario is a “business as usual” scenario as it follows the current trends to improved wastewater collection and treatment. In the simulation labels, IWT stands for “Improved Wastewater Treatment”, whereas ACT stands for “Actual (1991) point sources”, and simulations IWT+A2 and IWT+A2-Tw are similar to simulations ACT+A2 and ACT+A2-Tw apart from point source inputs.

All other boundary conditions to RIVERSTRAHLER are identical in all six simulations. They include all the diffuse sources to the river network. In particular, even if climate change significantly increases diffuse nitrate sources (Ducharne et al., 2007), this impact was neglected for simplicity, as these authors show that it has no subsequent influence on the other simulated terms of water quality, nitrate concentrations being already too high in present time simulations for ever being limiting. Photosynthetically active radiation in the water column is unchanged under climate change scenario A2, under the assumption that the high extinction coefficient of water prevents any significant change from solar radiation change. All indirect impacts of climate change were also neglected, such as possible adaptations of hydraulic management or land-use.

## 6.2 Results

The impact of climate change scenario A2 on the riverine biogeochemical processes described by the model RIVERSTRAHLER is compared in Paris and Conflans. These two stations are on the Seine River, at Strahler order 7, and their main difference is related to massive point source input between them, in particular from the Achères WTP (Sect. 3.3). The water quality at Conflans is representative of the one downstream from the Achères WTP, as shown by the comparison with the results simulated at Poses, the most downstream station before entering the estuary (Ducharne et al., 2007), and the water quality in Paris is representative of the fraction of the upstream river network where phytoplankton develops. In smaller streams, microbiological biomass and organic matter concentrations are very limited, and water quality issues are mainly related to nitrate diffuse pollution, which is not addressed in this paper.

## Stream temperature & climate change impact on water quality

A. Ducharne

Title Page

Abstract

Introduction

Conclusions

References

Tables

Figures

⏪

⏩

◀

▶

Back

Close

Full Screen / Esc

Printer-friendly Version

Interactive Discussion

Figure 8 compares the impact of climate change in Paris and Conflans, with point sources of 1991. The clear difference in nutrient and organic matter concentrations between these two stations as a result from massive point source input at Achères is illustrated by the ammonium concentration, and it is enhanced under climate change.

This impact is explained by reduced dilution owing to reduced discharge, as shown by the similarity between simulations ACT+A2-Tw and ACT+A2. The increase in ammonium and organic matter concentration under climate change combine in Conflans to enhance oxygen depletion. The comparison of simulations ACT+A2-Tw and ACT+A2 confirms the dominant influence of discharge change on this impact. The latter is augmented by the effect of water warming, which reduces the diffusivity of oxygen in the water column. This impact is present all the year long, and also in Paris, whereas the impact of reduced dilution is limited to low flow periods, and almost inexistent in absence of point source inputs.

Climate change also impacts phytoplankton biomass. In both stations, this effect is mostly due to water warming (Fig. 8). During the growth period (January to April), biomass is higher under climate change, because growth is enhanced at higher temperatures. During the rest of year, when phytoplankton biomass is limited because the rate of mortality, induced by numerous loss factors (zooplankton, viruses and benthic molluscs) is larger than the rate of growth, phytoplankton biomass is reduced under climate change. The reason is that temperature enhances the mortality rate more than the growth rate. Phytoplankton is largely dominated in the Seine River network by siliceous algae, *Diatoms*, which uptake dissolved silica as a nutrient. Therefore, the concentration of the latter constitutes an integrated indicator of the upstream phytoplankton growth, and the above two phases are clearly illustrated by the dissolved silica concentrations. They are separated by the minimum of silica concentration, and display an opposite response to climate change, with decreased concentrations during the enhanced growth period, and increased concentration afterwards, when growth is inhibited by enhanced mortality factors. Dissolved silica concentrations also show that, during this latter phase, the overall decrease in phytoplankton biomass results from

## Stream temperature & climate change impact on water quality

A. Ducharne

Title Page

Abstract

Introduction

Conclusions

References

Tables

Figures

⏪

⏩

◀

▶

Back

Close

Full Screen / Esc

Printer-friendly Version

Interactive Discussion

two opposed effects, the impact of warming on loss factors hiding a smaller growth increase related to discharge reduction (as revealed by the differences between simulations ACT and ACT+A2-Tw), by means of increased nutrient concentrations (as illustrated for ammonium), or increased residence time, or both.

5 The situation is very different when point sources are reduced (Fig. 9). The magnitude of the simulated reduction is illustrated by the ammonium concentrations in Conflans, when comparing simulations with point source input of 1991 (Fig. 8) and simulations with improved wastewater treatment as assumed by 2050 (Fig. 9). As a result from this marked reduction in point source inputs, nutrient and organic matter  
10 concentrations in simulation IWT are no more different between Conflans and Paris, and so are the other terms of water quality. In addition, phytoplankton biomass and silica depletion are reduced (by nutrient limitation) between ACT and IWT, as are oxygen deficits in Conflans, because the smaller concentrations in organic matter and ammonium limit respiration by heterotrophic and nitrifying bacteria. Starting from this much  
15 better water quality, the impact of climate change is smaller than with point source inputs of 1991. In both Conflans and Paris, this impact is similar to the one described in Paris with ACT as a reference simulation. In particular, the impact of reduced discharge and dilution is almost negligible in both stations.

## 7 Discussion and conclusions

20 This paper presented the development, in the Seine River basin, of a statistical model describing water temperature (WT) as a linear function of the lagged moving average of air temperature (lagged AT). A novel result compared to previous work was the evidence that the parameters of this model depended on Strahler stream order, as a result of the convergence of WT toward equilibrium temperature as water flows downstream.

25 This allowed us to define these parameters a priori from the sole Strahler order, which constitutes an interesting advance to generalize such statistical models. As discussed in Sect. 5.1, the main limitation of the statistical regression approach is its transferability

## Stream temperature & climate change impact on water quality

A. Ducharne

Title Page

Abstract

Introduction

Conclusions

References

Tables

Figures

⏪

⏩

◀

▶

Back

Close

Full Screen / Esc

Printer-friendly Version

Interactive Discussion

to other conditions than prevailing for the characterization of its parameters. Therefore, the proposed generalized model is only valid in the Seine river basin. If the relationship to Strahler order was confirmed in other watersheds, the parameters would still need to be characterized locally, as they implicitly account for all the local characteristics that are not explicated by the model.

Transferability is also an issue when addressing climate change, which shall lead to air temperatures that have never been experienced in history. In particular, there have been some evidences that the air-water temperature relationship fails to remain linear at the extreme bounds of the air temperature range, either below 0°C, as water freezes instead of cooling, or above ca. 25°C, the proposed explanation being based on the non linear dependence of radiative and evaporative cooling to temperature. These non-linearities induce an S-shaped relationship that can be described by a sigmoid function (e.g. Mohseni et al., 1998). Our analysis did not reveal that the relationship between WT and lagged AT departed from linearity at high temperatures, which may be related to the lagged moving average, as suggested by Webb et al. (2003). Further validation is required to address this concern, in particular using data from 2003, which had the warmest summer ever recorded in the Seine basin, as in most of Europe. An interesting perspective would then be the inclusion of this WT model directly in RIVERSTRAHLER, to dynamically describe the spatial-temporal variations of water temperature in response to meteorological forcing.

This paper finally illustrated the usefulness of the above WT model, coupled to validated physically-based models, to explore the possible evolutions of biogeochemical water quality. The simulated results highlighted how the latter is submitted to three main driving factors, namely river discharge, water temperature, and inputs to the river network, essentially controlled by human activities. The evolution of water quality was shown to result from complex interactions between these three factors, the evolution of which are all controlled by human activities, either directly or indirectly (e.g. climate change). With high point source input (as in Conflans with point source input of 1991), climate change impact was dominated by the one of water warming for phytoplank-

## Stream temperature & climate change impact on water quality

A. Ducharne

Title Page

Abstract

Introduction

Conclusions

References

Tables

Figures

⏪

⏩

◀

▶

Back

Close

Full Screen / Esc

Printer-friendly Version

Interactive Discussion

ton biomass and dissolved silica, and by the one of discharge reduction for oxygen, organic matter and other nutrients. With lower point sources (as in Paris, or assuming improved wastewater treatment), the impact of discharge reduction was negligible, and climate change impact was almost entirely due to water warming. These relative effects could probably be different if discharge change was higher. In any case, the impacts of climate change increased with the magnitude of point source inputs.

*Acknowledgements.* This work benefited from support by the French research programmes PIREN-Seine and Gestion et Impact du Changement Climatique of the Ministère de l'Ecologie et du Développement Durable. This work would not have been possible without the data provided by Météo-France, the Agence de l'Eau Seine-Normandie, and the Institution Interdépartementale des Barrages Réservoirs du Bassin de la Seine. Marilyse Latu was instrumental to perform the regression analyses shown in this paper. The author would also like to thank D. Brunstein, S. Théry and S. Christophe for their help with Arcview, and G. Billen and J. Garnier for fruitful discussions about the RIVERSTRAHLER model.

## References

- AESN: Les bassins de la Seine et des cours d'eau normands – Hydrologie générale et conclusions, Tome 1, Fascicule 6, Agence de l'Eau Seine-Normandie, Nanterre, 1976.
- Arnell, N. W., Liu, C., Compagnucci, R., da Cunha, L., Hanaki, K., Howe, C., Mailu, G., Shiklomanov, I., and Stakhiv, E.: Hydrology and water resources, in: Climate Change 2001: Impacts, Adaptation, and Vulnerability, edited by: McCarthy J. J., Canziani, O., Leary, N. A., Dokken, D. J., White, K. S., Contribution of Working Group II to the Third Assessment Report of the Intergovernmental Panel on Climate Change, Cambridge University Press, Cambridge, 191–233, 2001.
- Beven, K. and Kirkby, M. J.: A physically based variable contributing area model of basin hydrology, *Hydrol. Sci. Bull.*, 24, 43–69, 1979.
- Billen, G., Garnier, J., and Hanset, P.: Modelling phytoplankton development in whole drainage networks: The RIVERSTRAHLER model applied to the Seine River system, *Hydrobiol.*, 289, 119–137, 1994.

## Stream temperature & climate change impact on water quality

A. Ducharne

Title Page

Abstract

Introduction

Conclusions

References

Tables

Figures

⏪

⏩

◀

▶

Back

Close

Full Screen / Esc

Printer-friendly Version

Interactive Discussion



- Billen, G., Garnier, J., Ficht, A., and Cun, C.: Modelling the response of water quality in the Seine Estuary to human activity in its watershed over the last 50 years, *Estuaries*, 24, 977–993, 2001.
- Billen, G., Garnier, J., Mouchel, J. M., and Silvestre, M.: The Seine system: Introduction to a multidisciplinary approach of the functioning of a regional river system, *Sci. Total Environ.*, 375, 1–12, doi:10.1016/j.scitotenv.2006.12.001, 2007.
- Caissie, D., El-Jabi, N., and St-Hilaire, A.: Stochastic modelling of water temperatures in a small stream using air to water relations, *Can. J. Civ. Eng.*, 25, 250–260, 1998.
- Ducharne, A., Koster, R. D., Suarez, M., Stieglitz, M., and Kumar P.: A catchment-based approach to modeling land surface processes in a GCM – Part 2: Parameter estimation and model demonstration, *J. Geophys. Res.*, 105(D20), 24 823–24 838, 2000.
- Ducharne, A., Golaz, C., Leblois, E., Laval, K., Polcher, J., Ledoux, E., and de Marsily, G.: Development of a high resolution runoff routing model, calibration and application to assess runoff from the LMD GCM, *J. Hydrol*, 280, 207–228, 2003.
- Ducharne, A., Baubion, C., Beaudoin, N., Benoit, M., Billen, G., Brisson, N., Garnier, J., Kieken, H., Lebonvallet, S., Ledoux, E., Mary, B., Mignolet, C., Poux, X., Sauboua, E., Schott, C., Théry, S., and Viennot, P.: Long term prospective of the Seine River system: Confronting climatic and direct anthropogenic changes, *Sci. Total Environ.*, 375, 292–311, doi:10.1016/j.scitotenv.2006.12.011, 2007.
- Durand, Y., Brun, E., Merindol, L., Guyomarc’h, G., Lesaffre, B., and Martin, E.: A meteorological estimation of relevant parameters for snow models, *Annals of Glaciology*, 18, 65–71, 1993.
- EEA: Corine Land Cover (CLC90), European Environment Agency, <http://dataservice.eea.europa.eu/dataservice/metadetails.asp?id=188>, 1996.
- Erickson, T. R. and Stefan, H. G.: Linear air/water temperature correlations for streams during open water periods, *Journal of Hydrologic Engineering*, American Society of Civil Engineers, 5, 317–321, 2000.
- Garnier, J., Billen, G., and Coste, M.: Seasonal succession of Diatoms and Chlorophyceae in the drainage network of the River Seine: Observations and modelling, *Limn. Ocean.*, 40, 750–765, 1995.
- Garnier, J., Billen, G., and Palfner, L.: Understanding the oxygen budget and related ecological processes in the river Mosel: the RIVERSTRAHLER approach, *Hydrobiol.*, 410, 151–166, 1999.

---

**Stream temperature  
& climate change  
impact on water  
quality**A. Ducharne

---

Title Page

Abstract

Introduction

Conclusions

References

Tables

Figures

◀

▶

◀

▶

Back

Close

Full Screen / Esc

Printer-friendly Version

Interactive Discussion

## Stream temperature & climate change impact on water quality

A. Ducharne

Title Page

Abstract

Introduction

Conclusions

References

Tables

Figures

◀

▶

◀

▶

Back

Close

Full Screen / Esc

Printer-friendly Version

Interactive Discussion

Gibelin, A. L. and Déqué, M.: Anthropogenic climate change over the Mediterranean region simulated by a global variable resolution model, *Clim. Dyn.*, 20, 327–339, 2003.

Hanratty, M. P. and Stefan, H.G.: Simulating climate change effects in a Minnesota agricultural watershed, *J. Environ. Quality*, 27, 1524–1532, 1998.

5 Houghton, J. T., Ding, Y., Griggs, D. J., Noguera, M., van der Linden, P. J., Dai, X., Maskell, K., and Johnson, C. A.: *Climate Change 2001: The Scientific Basis – Contribution of Working Group I to the Third Assessment Report of IPCC*, Cambridge University Press, 2001.

Koster, R. D., Suarez, M., Ducharne, A., Stieglitz, M., and Kumar, P.: A catchment-based approach to modeling land surface processes in a GCM – Part 1: Model structure, *J. Geophys. Res.*, 105(D20), 24 809–24 822, 2000.

10 Ledoux, E., Gomez, E., Monget, J. M., Viavattene, C., Viennot, P., Ducharne, A., Benoit, M., Mignolet, C., Schott, C., and Mary, B.: Agriculture and Groundwater Nitrate Contamination in the Seine Basin. The STICS-MODCOU modelling chain, *Sci. Total Environ.*, 375, 33–47, doi:10.1016/j.scitotenv.2006.12.002, 2007.

15 Meybeck, M. de Marsily, G., and Fustec, E.: *La Seine en son bassin. Fonctionnement écologique d'un système fluvial anthropisé*, Elsevier, Paris, France, 1998.

Mohseni, O., Stefan, H. G., and Erickson, T. R.: A non linear regression model for weekly stream temperatures, *Water Resour. Res.*, 10, 2685–2692, 1998.

20 Mohseni, O. and Stefan, H. G.: Stream temperature/air temperature relationship: a physical interpretation, *J. Hydrol.*, 218, 128–141, 1999.

Stefan, H. G. and Preud'homme, E. B.: Stream temperature estimation from air temperature, *Water Resour. Bull.*, 29, 27–45, 1993.

Strahler, A. H.: Quantitative analysis of watershed geomorphology, *Geophys. Union Trans.*, 38, 913–920, 1957.

25 Vannote, R. L., Minshall, G. W., Cummins, K. W., Sedell, J. R., and Cushing, C. E.: The river continuum concept, *Can. J. Aquat. Sci.*, 37, 130–137, 1980.

Webb, B. W. and Nobilis, F.: Long-term perspective on the nature of the air-water temperature relationship: a case study, *Hydrol. Proc.*, 11, 137–147, 1997.

30 Webb, B. W., Clack, P. D., and Walling, D. E.: Water-air temperature relationships in a Devon system and the role of flow, *Hydrol. Proc.*, 17, 3069–3084, 2003.

**Table 1.** Relationships of observed water temperature (WT) to observed air temperature (AT) and calculated WT in the Seine basin: mean values as a function of Strahler order.

		Strahler order						
		1	2	3	4	5	6	7
	Number of WT stations	4	7	27	12	13	10	15
	Distance to AT stations (km)	6.9	16.6	10.8	12.7	11.9	8.4	13.0
	Mean WT	11.86	12.02	12.00	12.20	12.86	13.26	13.97
Observed WT vs. best linear function of lagged AT	Lag that maximizes $R^2$ (days)	2.75	3.86	3.44	4.33	6.15	10.90	14.33
	Slope $a$ (–)	0.68	0.66	0.73	0.79	0.88	0.98	1.06
	y-intercept $b$ (°C)	4.56	4.52	3.82	3.35	3.00	2.08	1.93
	Resulting $R^2$	0.89	0.90	0.94	0.95	0.95	0.95	0.96
	Bias (°C)	–0.11	–0.14	–0.19	–0.21	–0.19	–0.26	–0.18
	RMSE (°C)	1.29	1.16	1.13	1.07	1.18	1.31	1.26
Observed WT vs. calculated WT	Selected lag (days)	2	3	3	5	7	10	15
	Slope $a$ (–)	0.62	0.66	0.73	0.79	0.88	0.97	1.07
	y-intercept $b$ (°C)	4.74	4.32	3.81	3.34	2.97	2.31	1.93
	$R^2$	0.88	0.89	0.93	0.95	0.95	0.95	0.96
	Bias (°C)	–0.10	–0.29	–0.20	–0.23	–0.20	–0.25	–0.15
	RMSE (°C)	1.89	1.69	1.53	1.24	1.31	1.35	1.41

Title Page

Abstract

Introduction

Conclusions

References

Tables

Figures

◀

▶

◀

▶

Back

Close

Full Screen / Esc

Printer-friendly Version

Interactive Discussion

## Stream temperature & climate change impact on water quality

A. Ducharne

**Table 2.** Simulations of discharge and water quality performed with RIVERSTRAHLER. ACT stands for “Actual (1991) point sources” and IWT stands for “Improved Wastewater Treatment”, as can be assumed by 2050. A2 and REF refer to the climate scenarios used to simulate runoff with the CLSM.

Label	Point sources	Runoff	$\Delta$ WT (°C)
ACT	1991	REF (86–90)	0
ACT+A2-Tw	1991	A2	0
ACT+A2	1991	A2	+3.3
IWT	IWT (2050)	REF (86–90)	0
IWT+A2-Tw	IWT (2050)	A2	0
IWT+A2	IWT (2050)	A2	+3.3

Title Page

Abstract

Introduction

Conclusions

References

Tables

Figures

⏪

⏩

◀

▶

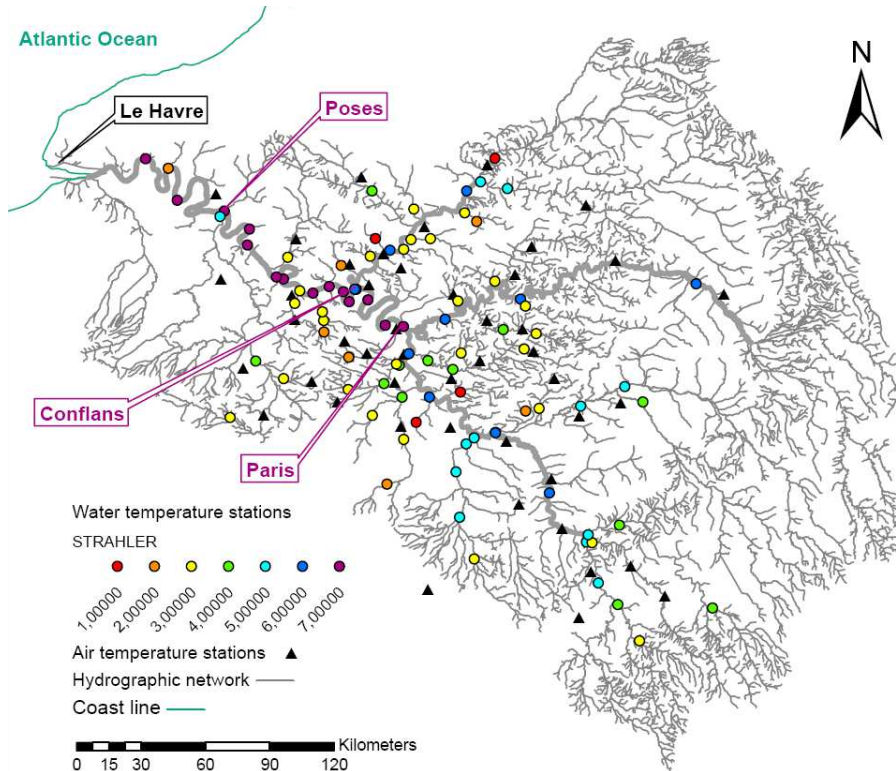
Back

Close

Full Screen / Esc

Printer-friendly Version

Interactive Discussion



**Fig. 1.** Map of the Seine River basin, locating the measurement stations of air and water temperature. The colours of the latter indicate the Strahler order at the water temperature measurement stations. The hydrographic network appears in grey and is thicker at Strahler orders 6 and 7. The Seine has an order 7 at Conflans, as in Paris, but the corresponding dot is masked by the one of the most downstream station on the Oise tributary, of order 6.

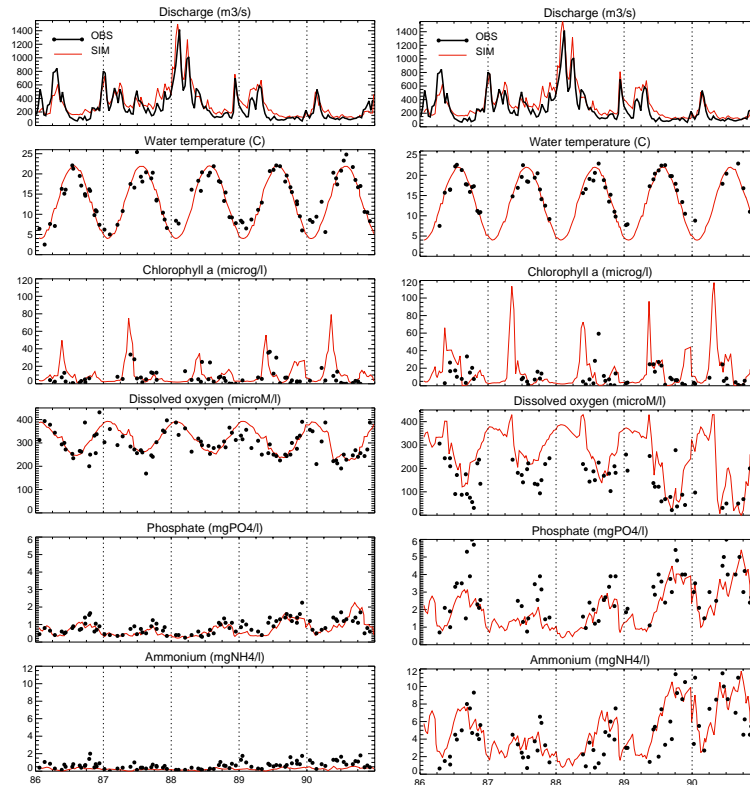
Stream temperature & climate change impact on water quality

A. Ducharne

Title Page	
Abstract	Introduction
Conclusions	References
Tables	Figures
◀	▶
◀	▶
Back	Close
Full Screen / Esc	
Printer-friendly Version	
Interactive Discussion	

## Stream temperature & climate change impact on water quality

A. Ducharne



**Fig. 2.** Validation of the discharge and water quality simulated by RIVERSTRAHLER coupled to CLSM in 1986–1990, in Paris (left) and in Conflans (right): comparison of observations (black dots; source: Réseau National de Bassins) with the water quality simulated using point sources of year 1991. Chlorophyll a is proportional to phytoplankton biomass (Garnier et al., 1995). Discharge is not measured at Conflans, and the observed values at Paris are used instead, as the upstream contributing areas to the two stations are almost identical.

Title Page

Abstract

Introduction

Conclusions

References

Tables

Figures

◀

▶

◀

▶

Back

Close

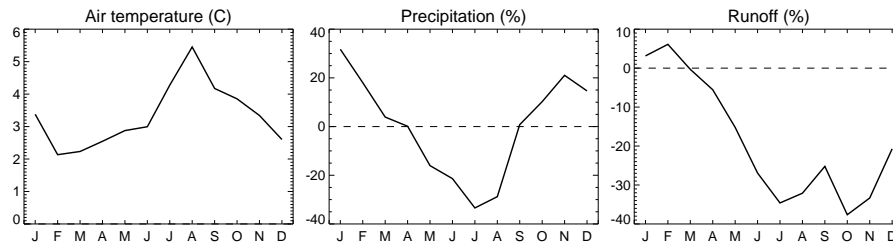
Full Screen / Esc

Printer-friendly Version

Interactive Discussion

## Stream temperature & climate change impact on water quality

A. Ducharne

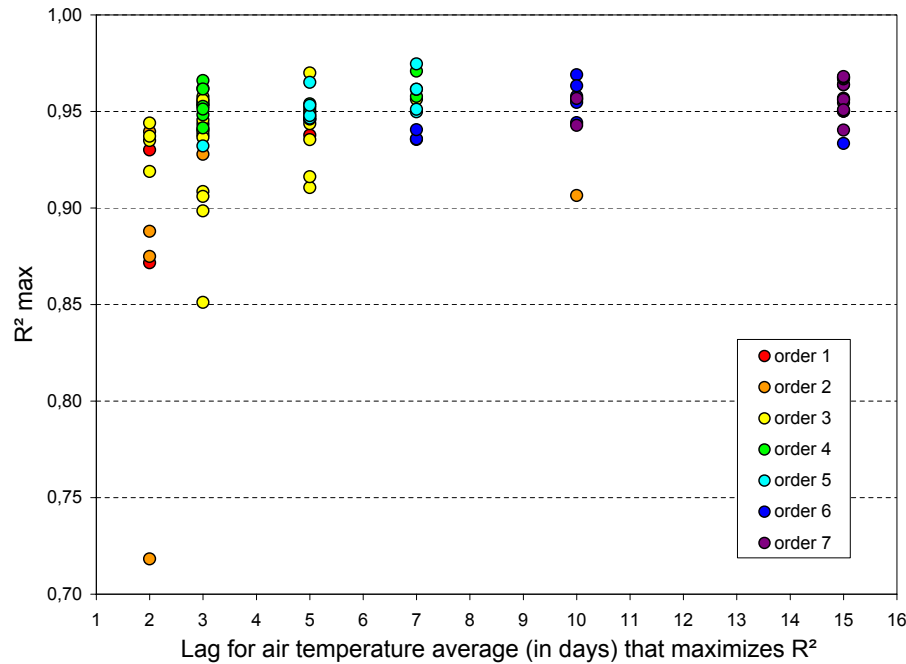


**Fig. 3.** Monthly mean anomalies between the climate change and reference scenarios (A2-REF), on average over the entire Seine watershed, for temperature (in °C), precipitation and runoff simulated by the CLSM (relative anomalies in % of the monthly mean reference value).

Title Page	
Abstract	Introduction
Conclusions	References
Tables	Figures
⏪	⏩
◀	▶
Back	Close
Full Screen / Esc	
Printer-friendly Version	
Interactive Discussion	

Stream temperature & climate change impact on water quality

A. Ducharne



**Fig. 4.** Lags used in the moving average of AT that maximize the determination coefficient  $R^2$  between WT and lagged AT, for each of the 88 couples of WT-AT measurement stations. The colour of the dots indicates the Strahler order of the WT station.

Title Page

Abstract Introduction

Conclusions References

Tables Figures

⏪ ⏩

◀ ▶

Back Close

Full Screen / Esc

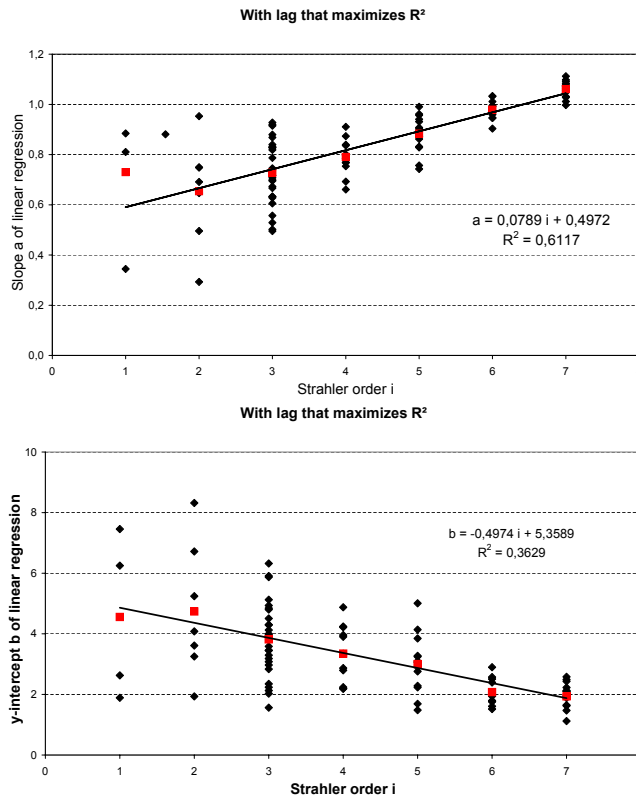
Printer-friendly Version

Interactive Discussion



Stream temperature & climate change impact on water quality

A. Ducharne

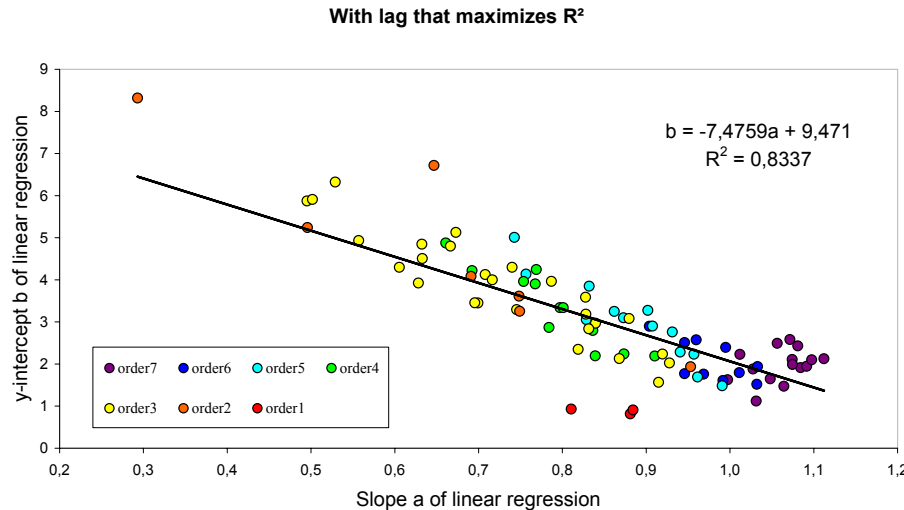


**Fig. 5.** Relationship to Strahler order of the slope (top) and y-intercept (bottom) of the linear regression between WT and lagged AT, using the lag that maximizes the determination coefficient R<sup>2</sup>. The black lines are the regression lines between the Strahler orders and the means of the slope and y-intercept for each Strahler order, represented by red squares. They are characterized by the linear regression equations and determination coefficients given in the plots.

Title Page	
Abstract	Introduction
Conclusions	References
Tables	Figures
⏪	⏩
◀	▶
Back	Close
Full Screen / Esc	
Printer-friendly Version	
Interactive Discussion	

Stream temperature & climate change impact on water quality

A. Ducharne

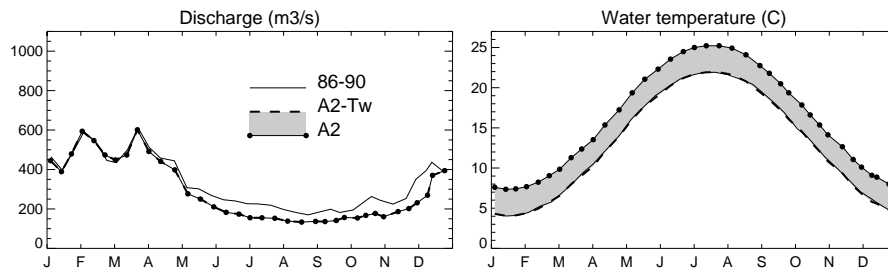


**Fig. 6.** Relationship between the slope  $a$  and  $y$ -intercept  $b$  of the linear regression between WT and lagged AT, using the lag that maximizes the determination coefficient  $R^2$ . The color of the dots indicates the Strahler order at the WT measurement stations. The black line is the regression line between the slopes and  $y$ -intercepts, characterized by the displayed linear regression equation and determination coefficient.

Title Page	
Abstract	Introduction
Conclusions	References
Tables	Figures
◀	▶
◀	▶
Back	Close
Full Screen / Esc	
Printer-friendly Version	
Interactive Discussion	

Stream temperature & climate change impact on water quality

A. Ducharne

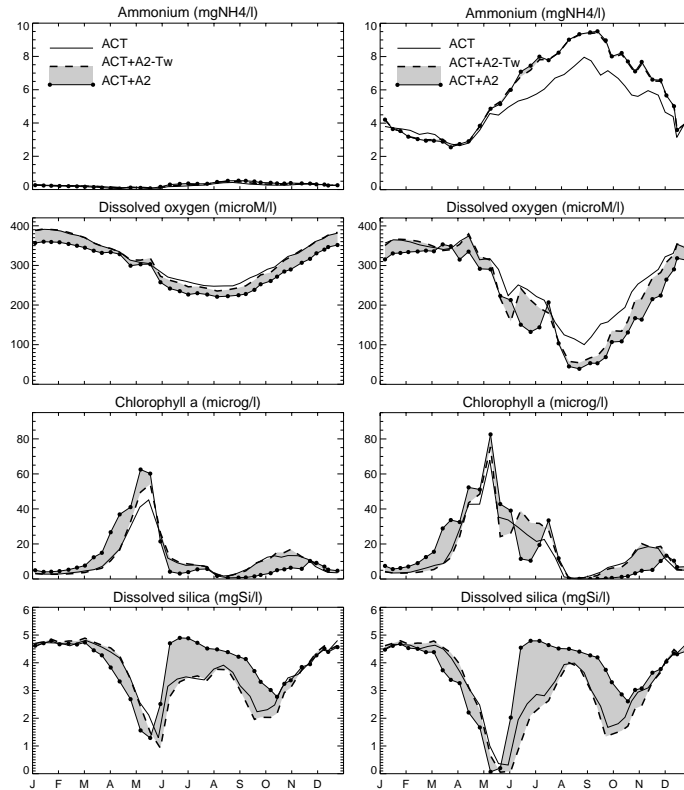


**Fig. 7.** Impact of climate change simulated by RIVERSTRAHLER on discharge and WT (interannual monthly means over 5 years) between the reference climate (1986–1990) and the two climate change scenarios: A2-Tw, where only discharge changes, and A2, where both discharge and water temperature change. The grey shade indicates the impact of water warming. The values are simulated in Paris, but are representative of Conflans, as the differences in simulated runoff and WT between the two stations are negligible.

Title Page	
Abstract	Introduction
Conclusions	References
Tables	Figures
◀	▶
◀	▶
Back	Close
Full Screen / Esc	
Printer-friendly Version	
Interactive Discussion	

Stream temperature & climate change impact on water quality

A. Ducharne



**Fig. 8.** Impact of climate change simulated by RIVERSTRAHLER on water quality (interannual monthly means over 5 years) in Paris (left) and Conflans (right), with point source input from 1991. Chlorophyll *a* is proportional to phytoplankton biomass (Garnier et al., 1995). The differences between simulations ACT and A2-Tw show the impact that arises from the changes in river discharge, and the differences between A2-Tw and A2, shaded in grey, show the impacts that are driven by the warming of the water column.

Title Page

Abstract Introduction

Conclusions References

Tables Figures

⏪ ⏩

◀ ▶

Back Close

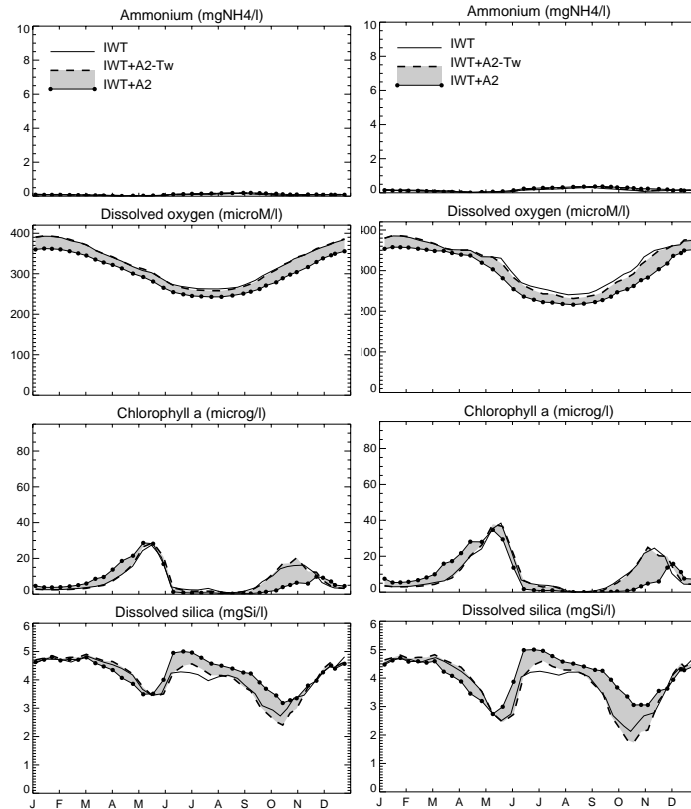
Full Screen / Esc

Printer-friendly Version

Interactive Discussion

Stream temperature & climate change impact on water quality

A. Ducharne



**Fig. 9.** Impact of climate change simulated by RIVERSTRAHLER on water quality (interannual monthly means over 5 years) in Paris (left) and Conflans (right), with reduced point source input as anticipated for 2050. Chlorophyll *a* is proportional to phytoplankton biomass (Garnier et al., 1995). The differences between simulations ACT and A2-Tw show the impact that arises from the changes in river discharge, and the differences between A2-Tw and A2, shaded in grey, show the impacts that are driven by the warming of the water column.

Title Page	
Abstract	Introduction
Conclusions	References
Tables	Figures
⏪	⏩
◀	▶
Back	Close
Full Screen / Esc	
Printer-friendly Version	
Interactive Discussion	