

PLANE WAVEGUIDES WITH CORNERS IN THE SMALL ANGLE LIMIT

MONIQUE DAUGE AND NICOLAS RAYMOND

ABSTRACT. The plane waveguides with corners considered here are infinite V-shaped strips with constant thickness. They are parametrized by their sole opening angle. We study the eigenpairs of the Dirichlet Laplacian in such domains when their angle tends to 0. We provide multi-scale asymptotics for eigenpairs associated with the lowest eigenvalues. For this, we investigate the eigenpairs of a one-dimensional model which can be viewed as their Born-Oppenheimer approximation. We also investigate the Dirichlet Laplacian on triangles with sharp angles. The eigenvalue asymptotics involve powers of the cube root of the angle, while the eigenvector asymptotics include simultaneously two scales in the triangular part, and one scale in the straight part of the guides.

1. INTRODUCTION AND MAIN RESULTS

1.1. Motivations and related questions. Quantum waveguides refer to meso- or nanoscale wires (or thin sheets) inside electronic devices. They can be modelled by one-electron Schrödinger operators with potentials having high contrast in their values. In many situations, such Schrödinger operators can be approximated by a simple Laplace operator with Dirichlet conditions on the boundary of the wires [11]. The presence of bound states is an undesirable effect which is nevertheless frequent and useful to predict. The same Laplace-Dirichlet problems arise for TE modes in electromagnetic waveguides [6].

This is a well-known fact, from the papers [11, 7, 8], that curvature makes discrete spectrum to appear in waveguides. Moreover the analysis of this spectrum can be accurately performed in the thin tube limit (in dimension 2 and 3, see [11, Section 5]). In fact, this asymptotical regime corresponds to a semiclassical limit so that the standard techniques of [18] could have been used to investigate that problem.

Curvature inducing discrete spectrum, this is then a natural question to ask what happens in dimension 2 when there is corner (infinite curvature): does discrete spectrum always exist? This question is investigated with the L -shape waveguide in [12] where the existence of discrete spectrum is proved. For an arbitrary angle too, this existence is proved in [3] and an asymptotic study of the ground energy is done when θ goes to $\frac{\pi}{2}$ (where θ is the semi-opening of the waveguide). Another question which arises is the estimate of the lowest eigenvalues in

Date: January 25, 2012.

1991 Mathematics Subject Classification. 35.

Key words and phrases. Discrete spectrum, Semi-classical limit, Born-Oppenheimer approximation, Quasi-mode, Agmon estimates.

the regime $\theta \rightarrow 0$. This problem is analyzed in [6] through matched asymptotic expansions and electromagnetic experiments. This is precisely the question we tackle in this paper: We are going to prove rigorous and complete asymptotics for the eigenpairs in plane waveguides with corner (also called “broken strips”) as θ tends to 0. We have provided in [10] numerical experiments by the finite element method for this situation too.

For the case of dimension 3, we can cite the paper [13] which deals with the Dirichlet Laplacian in a conical layer. In this case, there is an infinite number of eigenvalues below the essential spectrum. The other initial motivation for the present investigation is our previous work [4] in which we study the Neumann realization on $\mathbb{R}_+^2 = \{(s, t) \in \mathbb{R}^2 : t > 0\}$ of the Schrödinger operator $-\partial_s^2 - \partial_t^2 + (t \cos \theta - s \sin \theta)^2$ in the regime $\theta \rightarrow 0$ (see also [21, 19]). It turns out that the lowest eigenfunctions of this operator are concentrated near the cancellation line of the potential as it is confirmed by numerical experiments which also enlighten the link between a confining electric potential and a strip with Dirichlet boundary conditions.

While performing our analysis of plane waveguides with corners, we will precisely study the Dirichlet problem on an isosceles triangle with a small angle. This subject is already dealt with in [14, Theorem 1] where three-term asymptotics is proved for the two lowest eigenvalues by using the asymptotics of zeros of Bessel functions. Finally, we can mention the papers [15, 16] whose results provide two-term asymptotics for the thin rhombi and also [5] which deals with a regular case (thin ellipse for instance).

1.2. The Dirichlet Laplacian on the broken guide. Basic properties of its spectrum. Let us denote by (x_1, x_2) the Cartesian coordinates of the plane and by $\mathbf{0} = (0, 0)$ the origin. The positive Laplace operator is given by $-\partial_1^2 - \partial_2^2$. The domains of interest are the “broken waveguides” which are infinite V-shaped open sets: For any angle $\theta \in (0, \frac{\pi}{2}]$ we introduce

$$(1.1) \quad \Omega_\theta = \left\{ (x_1, x_2) \in \mathbb{R}^2 : x_1 \tan \theta < |x_2| < \left(x_1 + \frac{\pi}{\sin \theta} \right) \tan \theta \right\}.$$

Note that its width is independent from θ , normalized to π , and θ represents the (half) opening of the V, see Fig. 1. The limit case where $\theta = \frac{\pi}{2}$ corresponds to a straight strip. The aim of this paper is the investigation of the lowest eigenvalues of the *positive* Dirichlet Laplacian $\Delta_{\Omega_\theta}^{\text{Dir}}$ in the small angle limit $\theta \rightarrow 0$.

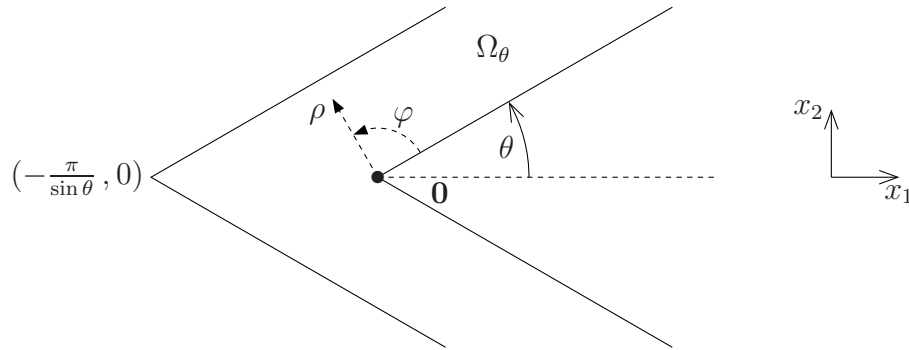


FIGURE 1. The broken guide Ω_θ (here $\theta = \frac{\pi}{6}$). Cartesian and polar coordinates.

The operator $\Delta_{\Omega_\theta}^{\text{Dir}}$ is a positive unbounded self-adjoint operator with domain

$$\text{Dom}(\Delta_{\Omega_\theta}^{\text{Dir}}) = \{\psi \in H_0^1(\Omega_\theta) : \Delta\psi \in L^2(\Omega_\theta)\}.$$

The boundary of Ω_θ is not smooth, it is polygonal. The presence of the non-convex corner with vertex $\mathbf{0}$ is the reason for the space $\text{Dom}(\Delta_{\Omega_\theta}^{\text{Dir}})$ to be distinct from $H^2 \cap H_0^1(\Omega_\theta)$. Nevertheless this domain can be precisely characterized as follows. Let us introduce polar coordinates (ρ, φ) centered at the origin, with $\varphi = 0$ coinciding with the upper part $x_2 = x_1 \tan \theta$ of the boundary of Ω_θ . Let χ be a smooth radial cutoff function with support in the region $x_1 \tan \theta < |x_2|$ and $\chi \equiv 1$ in a neighborhood of the origin. We introduce the explicit *singular function*

$$(1.2) \quad \psi_{\text{sing}}^\theta(x_1, x_2) = \chi(\rho) \rho^{\pi/\omega} \sin \frac{\pi\varphi}{\omega}, \quad \text{with } \omega = 2(\pi - \theta).$$

Then there holds, see the classical references [20, 17]:

$$(1.3) \quad \text{Dom}(\Delta_{\Omega_\theta}^{\text{Dir}}) = H^2 \cap H_0^1(\Omega_\theta) \oplus [\psi_{\text{sing}}]$$

where $[\psi_{\text{sing}}]$ denotes the space generated by ψ_{sing} .

We gather in the following statement several important preliminary properties for the spectrum of $\Delta_{\Omega_\theta}^{\text{Dir}}$. All these results are proved in the literature. We briefly indicate hereafter what are the main arguments of the proofs, and where details can be found.

Proposition 1.1. (i) If $\theta = \frac{\pi}{2}$, $\Delta_{\Omega_\theta}^{\text{Dir}}$ has no discrete spectrum. Its essential spectrum is the closed interval $[1, +\infty)$.

(ii) For any θ in the open interval $(0, \frac{\pi}{2})$ the essential spectrum of $\Delta_{\Omega_\theta}^{\text{Dir}}$ coincides with $[1, +\infty)$.

(iii) For any $\theta \in (0, \frac{\pi}{2})$, the discrete spectrum of $\Delta_{\Omega_\theta}^{\text{Dir}}$ is nonempty and finite. In other words, $\Delta_{\Omega_\theta}^{\text{Dir}}$ has at least one eigenvalue below 1, but a finite number of them.

(iv) For any $\theta \in (0, \frac{\pi}{2})$ and any eigenvalue in the discrete spectrum of $\Delta_{\Omega_\theta}^{\text{Dir}}$, the associated eigenvectors ψ are even with respect to the horizontal axis: $\psi(x_1, -x_2) = \psi(x_1, x_2)$.

(v) For any $\theta \in (0, \frac{\pi}{2})$, let $\mu_{\text{Gui},n}(\theta)$, $n = 1, \dots$, be the n -th Rayleigh quotient of $\Delta_{\Omega_\theta}^{\text{Dir}}$. Then, for any $n \geq 1$, the function $\theta \mapsto \mu_{\text{Gui},n}(\theta)$ is continuous and increasing.

Proof. (i) is a straightforward consequence of the separation of variables in $\Omega_{\pi/2} \equiv \mathbb{R} \times (0, \pi)$.

(ii) is a consequence of the fact that outside a compact set, Ω_θ is the union of two strips isometric to $(0, +\infty) \times (0, \pi)$.

(iii) The fact that there are eigenvalues below the essential spectrum is known since [3]. See also in [10, §4] another proof based on a more general argument developed in [11, 7, 8] for waveguides with curvature. The fact that there is only a finite number of such eigenvalues is proved in [10, §5] using a similar method as [22, Theorem 2.1].

(iv) Since the domain and the operator are invariant by the symmetry $x_2 \mapsto -x_2$, the eigenvectors are even of odd with respect to the horizontal axis. An argument of monotonicity for Dirichlet eigenvalues excludes the odd eigenvectors, see [10, §2.2] for details.

(v) The monotonicity of the Rayleigh quotients is a consequence of the previous point and a suitable change of variable which transform the operator $-\Delta$ in a domain depending on θ into an operator depending on θ on a fixed domain, see [10, §3] for details. \square

1.3. Other related operators in two dimensions.

1.3.1. *The half-guide.* As a consequence of the parity properties of the eigenvectors of $\Delta_{\Omega_\theta}^{\text{Dir}}$, cf. point (iv) of Proposition 1.1, we can reduce the spectral problem to the half-guide

$$(1.4) \quad \Omega_\theta^+ = \{(x_1, x_2) \in \Omega_\theta : x_2 > 0\}.$$

We define the Dirichlet part of the boundary by $\partial_{\text{Dir}}\Omega_\theta^+ = \partial\Omega_\theta \cap \partial\Omega_\theta^+$, and the corresponding variational space (the form domain)

$$H_{\text{Mix}}^1(\Omega_\theta^+) = \{\psi \in H^1(\Omega_\theta^+) : \psi = 0 \text{ on } \partial_{\text{Dir}}\Omega_\theta^+\}.$$

Then the new operator of interest, denoted by $\Delta_{\Omega_\theta^+}^{\text{Mix}}$, is the Laplacian with mixed Dirichlet-Neumann conditions on Ω_θ^+ . Its domain is:

$$\text{Dom}(\Delta_{\Omega_\theta^+}^{\text{Mix}}) = \{\psi \in H_{\text{Mix}}^1(\Omega_\theta^+) : \Delta\psi \in L^2(\Omega_\theta^+) \text{ and } \partial_2\psi = 0 \text{ on } x_2 = 0\}.$$

Then the operators $\Delta_{\Omega_\theta}^{\text{Dir}}$ and $\Delta_{\Omega_\theta^+}^{\text{Mix}}$ have the same eigenvalues below 1 and the eigenvectors of the latter are the restriction to Ω_θ^+ of the former.

1.3.2. *Rescaling of the half-guide.* In order to analyze the asymptotics $\theta \rightarrow 0$, it is useful to rescale the integration domain and transfer the dependence on θ into the coefficients of the operator. For this reason, let us perform the following linear change of coordinates:

$$(1.5) \quad x = x_1\sqrt{2}\sin\theta, \quad y = x_2\sqrt{2}\cos\theta,$$

which maps Ω_θ^+ onto $\Omega_{\pi/4}^+$ which will serve as reference domain, see Fig. 2. That is why we set for simplicity

$$(1.6) \quad \Omega := \Omega_{\pi/4}^+, \quad \partial_{\text{Dir}}\Omega = \partial_{\text{Dir}}\Omega_{\pi/4}^+, \quad \text{and} \quad H_{\text{Mix}}^1(\Omega) = \{\psi \in H^1(\Omega) : \psi = 0 \text{ on } \partial_{\text{Dir}}\Omega\}.$$

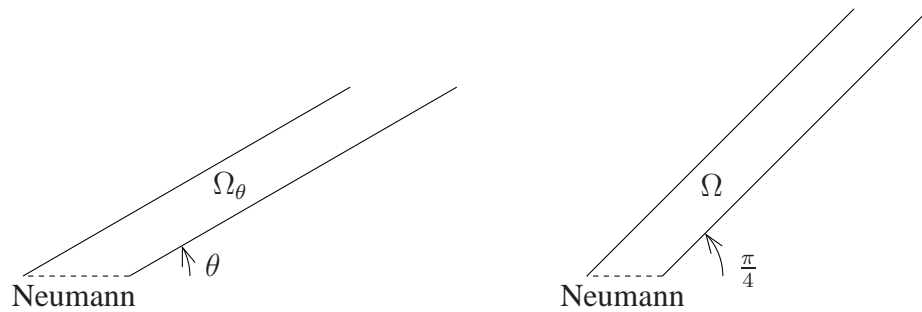


FIGURE 2. The half-guide Ω_θ^+ for $\theta = \frac{\pi}{6}$ and the reference domain Ω .

Then, $\Delta_{\Omega_\theta^+}^{\text{Mix}}$ is unitarily equivalent to the operator defined on Ω by:

$$(1.7) \quad \mathcal{D}_{\text{Gui}}(\theta) := -2\sin^2\theta\partial_x^2 - 2\cos^2\theta\partial_y^2,$$

with Neumann condition on $y = 0$ and Dirichlet everywhere else on the boundary of Ω . We let $h = \tan \theta$; after a division by $2 \cos^2 \theta$, we get the new operator:

$$(1.8) \quad \mathcal{L}_{\text{Gui}}(h) = -h^2 \partial_x^2 - \partial_y^2,$$

with domain:

$$\text{Dom}(\mathcal{L}_{\text{Gui}}(h)) = \{\psi \in H_{\text{Mix}}^1(\Omega) : \mathcal{L}_{\text{Gui}}(h)\psi \in L^2(\Omega) \text{ and } \partial_y \psi = 0 \text{ on } y = 0\}.$$

1.3.3. *The triangles.* We will also need to introduce the triangular end of this waveguide:

$$(1.9) \quad \text{Tri}_\theta = \{(x_1, x_2) \in \Omega_\theta : x_1 < 0\}$$

and the corresponding Dirichlet Laplacian denoted by $\Delta_{\text{Tri}_\theta}^{\text{Dir}}$.

Prior to the investigation of $\mathcal{L}_{\text{Gui}}(h)$, we are to going to study $\mathcal{L}_{\text{Tri}}(h)$ which denotes the same operator $-h^2 \partial_x^2 - \partial_y^2$ with Dirichlet conditions on the triangular end Tri of the model waveguide $\Omega_{\pi/4}$

$$(1.10) \quad \text{Tri} = \{(x, y) \in \mathbb{R}^2 : -\pi\sqrt{2} < x < 0 \text{ and } |y| < x + \pi\sqrt{2}\}.$$

1.4. Born-Oppenheimer approximation and models.

1.4.1. *Schrödinger operators in one dimension.* In the analysis of $\mathcal{L}_{\text{Tri}}(h)$ and $\mathcal{L}_{\text{Gui}}(h)$, we will see that its so-called Born-Oppenheimer approximation will play an important role:

$$(1.11) \quad \mathcal{H}_{\text{BO,Gui}}(h) = -h^2 \partial_x^2 + V(x),$$

where

$$V(x) = \begin{cases} \frac{\pi^2}{4(x + \pi\sqrt{2})^2} & \text{when } x \in (-\pi\sqrt{2}, 0), \\ \frac{1}{2} & \text{when } x \geq 0. \end{cases}$$

This effective potential V is obtained by replacing $-\partial_y^2$ in the expression of $\mathcal{L}_{\text{Gui}}(h)$ by its lowest eigenvalue on each slice of Ω at fixed x . When h goes to zero, the behavior of the ground eigenpairs of $\mathcal{H}_{\text{BO,Gui}}(h)$ is driven by the structure of the potential near its minimum, attained at $x = 0$: In a neighborhood of $x = 0$, V can be approximated by its left and right tangents, which provides the approximate potential V_{app} defined by

$$V_{\text{app}}(x) = \begin{cases} \frac{1}{8} - \frac{1}{4\pi\sqrt{2}} x & \text{when } x \in (-\pi\sqrt{2}, 0), \\ \frac{1}{2} & \text{when } x \geq 0. \end{cases}$$

After the change of variables $z = \sqrt{2}x/(3\pi)$ and the change of parameter $\kappa = 4h/(3\pi\sqrt{3})$, we find the correspondence

$$(1.12) \quad -h^2 \partial_x^2 + V_{\text{app}}(x) \sim \frac{3}{8} \mathcal{H}_{\text{toy}}(\kappa)[z; \partial_z] + \frac{1}{8}$$

where the toy model operator $\mathcal{H}_{\text{toy}}(\kappa)[z; \partial_z]$ is defined as:

$$(1.13) \quad \mathcal{H}_{\text{toy}}(\kappa) = -\kappa^2 \partial_z^2 + W(z) \quad \text{with} \quad W(z) = \begin{cases} -z & \text{when } z \leq 0, \\ 1 & \text{when } z \geq 0. \end{cases}$$

This toy model invites us to recall the properties of the Airy operator.

1.4.2. The Airy function and its zeros. Let us recall the basic properties of the Airy operator, i.e. the Dirichlet realization on $L^2(\mathbb{R}_-)$ of the operator $-\partial_z^2 - z$. This is standard that this (positive) operator has compact resolvent. Thus, its spectrum can be described as an increasing sequence of eigenvalues tending to $+\infty$. Let us use the traditional notation Ai for the Airy function. We recall that it satisfies:

$$-\text{Ai}'' + z\text{Ai} = 0.$$

All along this paper, we will use A the reverse Airy function, i.e. $A(z) = \text{Ai}(-z)$. We recall that A does not vanish on \mathbb{R}_- , is exponentially decreasing when $z \rightarrow -\infty$ and that its zeros (which are simple) form an increasing sequence of positive numbers tending to $+\infty$.

Notation 1.2. The n -th zero of A will be denoted by $z_A(n)$.

If (λ, ψ_λ) is an eigenpair of the Airy operator, we have $-\psi_\lambda'' - z\psi_\lambda = \lambda\psi_\lambda$, hence the equation $-\psi_\lambda'' - (z + \lambda)\psi_\lambda = 0$. We deduce that there exists a number $c(\lambda)$ so that:

$$\psi_\lambda(z) = c(\lambda)A(z + \lambda).$$

With those remarks, we can see that the spectrum of the Airy operator is $\{z_A(n), n \geq 1\}$ and these eigenvalues are simple.

1.4.3. Born-Oppenheimer approximation on the triangle. Finally, let us introduce the Dirichlet realization on $L^2((-\pi\sqrt{2}, 0))$ of:

$$(1.14) \quad \mathcal{H}_{\text{BO, Tri}}(h) = -h^2 \partial_x^2 + \frac{\pi^2}{4(x + \pi\sqrt{2})^2}.$$

This operator is the Born-Oppenheimer approximation of the operator $\mathcal{L}_{\text{Tri}}(h)$ on the triangle Tri and will be the first order approximation of $\mathcal{H}_{\text{BO, Gui}}(h)$ defined in (1.11).

1.5. Asymptotic expansions of eigenvalues. We can now state the main results of this paper.

1.5.1. Toy model in one dimension. The lowest eigenvalues of the toy model (1.13) admit analytic expansions with respect to $\kappa^{1/3}$ (when κ is small enough):

Theorem 1.3. For all $N_0 \in \mathbb{N}$, there exists $\kappa_0 > 0$ such that, for $\kappa \in (0, \kappa_0)$, there exists at least N_0 eigenvalues of $\mathcal{H}_{\text{toy}}(\kappa)$ below 1. Denoting by $\lambda_{\text{toy}, n}(\kappa)$ the increasing sequence of these eigenvalues, we have the converging expansions for $1 \leq n \leq N_0$ and κ small enough:

$$\lambda_{\text{toy}, n}(\kappa) = \kappa^{2/3} \sum_{j=0}^{+\infty} \alpha_{j, n} \kappa^{j/3} \quad \text{with first coefficient } \alpha_{0, n} = z_A(n).$$

The corresponding eigenvectors have expansions in powers of $\kappa^{1/3}$ with the scales $z/\kappa^{2/3}$ when $z < 0$ and z/h when $z > 0$, see (2.7)-(2.8).

1.5.2. *Triangles.* The lowest eigenvalues of the triangle Tri_θ admit expansions at any order¹ in powers of $\theta^{1/3}$. We first state the result for the scaled operator $\mathcal{L}_{\text{Tri}}(h)$ introduced in §1.3.3:

Theorem 1.4. *The eigenvalues of $\mathcal{L}_{\text{Tri}}(h)$, denoted by $\lambda_{\text{Tri},n}(h)$, admit the expansions:*

$$\lambda_{\text{Tri},n}(h) \underset{h \rightarrow 0}{\sim} \sum_{j \geq 0} \beta_{j,n} h^{j/3} \quad \text{with } \beta_{0,n} = \frac{1}{8}, \quad \beta_{1,n} = 0, \quad \text{and } \beta_{2,n} = (4\pi\sqrt{2})^{-2/3} z_A(n),$$

the terms of odd rank being zero for $j \leq 8$. The corresponding eigenvectors have expansions in powers of $h^{1/3}$ with both scales $x/h^{2/3}$ and x/h , see (4.14).

In terms of the physical domain Tri_θ , we deduce immediately from the previous theorem that the eigenvalues of $\Delta_{\text{Tri}_\theta}^{\text{Dir}}$, denoted by $\mu_{\text{Tri},n}(\theta)$, admit the expansions:

$$\mu_{\text{Tri},n}(\theta) \underset{h \rightarrow 0}{\sim} \sum_{j \geq 0} \beta_{j,n}^\Delta \theta^{j/3} \quad \text{with } \beta_{0,n}^\Delta = \frac{1}{4}, \quad \beta_{1,n}^\Delta = 0, \quad \text{and } \beta_{2,n}^\Delta = 2(4\pi\sqrt{2})^{-2/3} z_A(n),$$

the coefficients $\beta_{j,n}^\Delta$ having the same properties as the $\beta_{j,n}$. Performing the dilatation:

$$\tilde{x}_1 = \sin 2\theta x_1 \quad \tilde{x}_2 = \sin 2\theta x_2,$$

we transform Tri_θ into a new isosceles triangle with angle $\alpha = 2\theta$ and two sides with length $c = 2\pi$. Let us denote by $\mu_{\widetilde{\text{Tri}},n}(\alpha)$ its Dirichlet eigenvalues. It is easy to see that the eigenvalues satisfy the relation:

$$\mu_{\text{Tri},n}(\theta) = (\sin \alpha)^2 \mu_{\widetilde{\text{Tri}},n}(\alpha),$$

so that we find back the result of [14, Theorem 1].

Remark 1.5. As it will be seen in the proof, the existence of a non-zero coefficient $\beta_{9,n}$ at the order 9 in the expansion of $\lambda_{\text{Tri},n}(h)$ reduces to the evaluation of an integral, see (4.12). If $\beta_{9,n} \neq 0$, there is a nonzero odd term after $\mathcal{O}(\alpha^{2/3})$ in the asymptotics of $\mu_{\widetilde{\text{Tri}},1}(\alpha)$.

1.5.3. *Broken guides.* Finally, the lowest eigenvalues of the waveguide also admit expansions in powers of $\theta^{1/3}$. We first state the result for the scaled operator $\mathcal{L}_{\text{Gui}}(h)$ introduced in (1.8):

Theorem 1.6. *For all N_0 , there exists $h_0 > 0$, such that for $h \in (0, h_0)$ the N_0 first eigenvalues of $\mathcal{L}_{\text{Gui}}(h)$ exist. These eigenvalues, denoted by $\lambda_{\text{Gui},n}(h)$, admit the expansions:*

$$\lambda_{\text{Gui},n}(h) \underset{h \rightarrow 0}{\sim} \sum_{j \geq 0} \gamma_{j,n} h^{j/3} \quad \text{with } \gamma_{0,n} = \frac{1}{8}, \quad \gamma_{1,n} = 0, \quad \text{and } \gamma_{2,n} = (4\pi\sqrt{2})^{-2/3} z_A(n)$$

and the term of order h is not zero. The corresponding eigenvectors have expansions in powers of $h^{1/3}$ with the scale x/h when $x > 0$, and both scales $x/h^{2/3}$ and x/h when $x < 0$, see (5.11).

Deducing the eigenvalues in the waveguide Ω_θ is an obvious consequence of this theorem:

¹ By the notation $\lambda(h) \underset{h \rightarrow 0}{\sim} \sum_{j \geq 0} c_j h^{j\rho}$ (with a positive ρ) we mean that for any positive integer J we have the estimate

$$|\lambda(h) - \sum_{0 \leq j \leq J} c_j h^{j\rho}| \leq C_J h^{(J+1)\rho} \quad \text{for } h \text{ small enough.}$$

Corollary 1.7. *For all N_0 , there exists $\theta_0 > 0$, such that for $\theta \in (0, \theta_0)$ the N_0 first eigenvalues of $\Delta_{\Omega_\theta}^{\text{Dir}}$ exist. These eigenvalues, denoted by $\mu_{\text{Gui},n}(\theta)$, admit the expansions:*

$$\mu_{\text{Gui},n}(\theta) \underset{h \rightarrow 0}{\sim} \sum_{j \geq 0} \gamma_{j,n}^\Delta \theta^{j/3} \quad \text{with } \gamma_{0,n}^\Delta = \frac{1}{4}, \quad \gamma_{1,n}^\Delta = 0, \quad \text{and } \gamma_{2,n}^\Delta = 2(4\pi\sqrt{2})^{-2/3} z_A(n)$$

and the term of order θ is not zero. The corresponding eigenvectors have expansions in powers of $\theta^{1/3}$ with terms independent of θ , and with terms at the scale $x_1 \theta^{1/3}$ when $x_1 < 0$.

1.6. Organization of the paper. In Section 2 we investigate the one dimensional toy model $\mathcal{H}_{\text{toy}}(\kappa)$ through a construction of quasimodes and an ODE analysis. In Section 3 we study the Born-Oppenheimer approximation $\mathcal{H}_{\text{BO, Tri}}(h)$ based on quasimode construction and Agmon estimates. This leads in Section 4 to results on the Dirichlet problem on a triangle with small angle: Through a projection method we can reduce the analysis to dimension 1. Finally, in Section 5, we perform again a construction of quasimodes for the waveguide and introduce in particular Dirichlet-to-Neumann operators to solve a transmission problem; we complete the proof by comparing with the triangle case. We conclude our paper by discussing relations between the eigenvector asymptotics and the reentrant corner singularity. We also discuss the extension of our results on X-shaped waveguides (crossing straight wires).

1.7. Notation and terminology. The L^2 norm will always be denoted by $\|\cdot\|$, in general without mention of the integration domain. For a subset $S \subset \mathbb{R}$ and a point $p \in \mathbb{R}$, $\text{dist}(S, p)$ is the distance between S and p , i.e. $\inf_{s \in S} |s - p|$.

We denote by $\mathfrak{S}(A)$ the spectrum of a self-adjoint operator A , by $\mathfrak{S}_{\text{ess}}(A)$ its essential spectrum, and by $\mathfrak{S}_{\text{dis}}(A)$ its discrete spectrum. An eigenmode (or eigenpair) of A is a pair (λ, ψ) with ψ in the domain of A , such that $A\psi = \lambda\psi$; then λ is the eigenvalue and ψ the eigenvector. A quasimode for A is a pair $(\tilde{\lambda}, \tilde{\psi})$ such that $\|A\tilde{\psi} - \tilde{\lambda}\tilde{\psi}\| \leq \varepsilon\|\tilde{\psi}\|$ with ε small; $\tilde{\lambda}$ is the quasi-eigenvalue and $\tilde{\psi}$ the quasi-eigenvector. The spectral theorem implies that $\text{dist}(\mathfrak{S}(A), \tilde{\lambda}) \leq \varepsilon$.

| Domain | Notation | Variables | Main operators |
|-------------------|-------------------------------------|---------------------------------------|--|
| Scaled Triangle | Tri (1.10) | (x, y) (1.5) | $\mathcal{L}_{\text{Tri}}(h) = -h^2 \partial_x^2 - \partial_y^2$ |
| Rectangle | Rec (4.2) | (u, t) (4.1) | $\mathcal{L}_{\text{Rec}}(h)$ (4.3) |
| Half-strip | Hst = $\mathbb{R}_- \times (-1, 1)$ | (s, t) (4.5) (σ, t) (4.5) | $\sum_j \mathcal{L}_{2j} h^{2j/3}$ (4.7) $\sum_j \mathcal{N}_{3j} h^j$ (4.8) |
| Scaled half-guide | Ω (1.6) | (x, y) (1.5) | $\mathcal{L}_{\text{Gui}}(h) = -h^2 \partial_x^2 - \partial_y^2$ |
| Left half-strip | Hlef = $\mathbb{R}_- \times (0, 1)$ | (s, t) (σ, t) | $\sum_j \mathcal{L}_{2j} h^{2j/3}$ Notation 5.2 $\sum_j \mathcal{N}_{3j}^{\text{lef}} h^j$ Notation 5.2 |
| Right half-strip | Hrig = $\mathbb{R}_+ \times (0, 1)$ | (σ, τ) (5.2) | $\sum_j \mathcal{N}_{3j}^{\text{rig}} h^j$ Notation 5.2 |

TABLE 1. Main notation for domains, variables and operators.

2. TOY MODEL IN ONE DIMENSION

This subsection is devoted to the proof of Theorem 1.3 devoted to the spectral asymptotics of the operator $\mathcal{H}_{\text{toy}}(\kappa)$ defined in (1.13). This proof is divided into two steps. First, we construct quasimodes for $\mathcal{H}_{\text{toy}}(\kappa)$, and second, we show that the lowest quasi-eigenvalues are the approximations of the lowest eigenvalues of $\mathcal{H}_{\text{toy}}(\kappa)$ of the same rank.

2.1. Construction of quasimodes. In this section we prove in particular the following:

Proposition 2.1. *For all $N_0 \in \mathbb{N}^*$, there exists $\kappa_0 > 0$ and $C > 0$ such that for $\kappa \in (0, \kappa_0)$:*

$$(2.1) \quad \text{dist}(\mathfrak{S}_{\text{dis}}(\mathcal{H}_{\text{toy}}(\kappa)), \kappa^{2/3} z_A(n)) \leq C\kappa, \quad n = 1, \dots, N_0.$$

Proof. The basic tool for the proof is the construction of quasimodes and the application of the spectral theorem. Convenient quasimodes are given by power series in $\kappa^{1/3}$ of *profiles* at the scales

$$(2.2) \quad s = \kappa^{-2/3} z \quad \text{when } z \leq 0 \text{ (left)} \quad \text{and} \quad \sigma = \kappa^{-1} z \quad \text{when } z \geq 0 \text{ (right)}.$$

More precisely we look for quasi-eigenfunctions ψ_κ in the form:

$$(2.3) \quad \psi_\kappa(z) \sim \begin{cases} \sum_{j \geq 0} \Psi_{\text{lef},j}(s) \kappa^{j/3} & \text{when } z \leq 0 \\ \sum_{j \geq 0} \Phi_{\text{rig},j}(\sigma) \kappa^{j/3} & \text{when } z \geq 0, \end{cases}$$

and quasi-eigenvalues in the form:

$$(2.4) \quad \alpha_\kappa \sim \kappa^{2/3} \sum_{j \geq 0} \alpha_j \kappa^{j/3} \quad \text{as } \kappa \rightarrow 0.$$

The continuity conditions at $z = 0$ provide the formal identities:

$$(2.5) \quad \begin{cases} \sum_{j \geq 0} \Psi_{\text{lef},j}(0) \kappa^{j/3} & = & \sum_{j \geq 0} \Phi_{\text{rig},j}(0) \kappa^{j/3} \\ \kappa^{-2/3} \sum_{j \geq 0} \partial_s \Psi_{\text{lef},j}(0) \kappa^{j/3} & = & \kappa^{-1} \sum_{j \geq 0} \partial_\sigma \Phi_{\text{rig},j}(0) \kappa^{j/3}, \end{cases}$$

and the formal eigen-equation is

$$(2.6) \quad -\kappa^2 \psi_\kappa''(z) + W(z) \psi_\kappa(z) = \alpha_\kappa \psi_\kappa(z) \quad z \in \mathbb{R}.$$

• *Determination of α_0 .* Collecting the terms in $\kappa^{2/3}$ in (2.6) and using (2.3)-(2.5) we obtain:

$$\begin{cases} -\Phi_{\text{rig},0}''(\sigma) + \Phi_{\text{rig},0}(\sigma) = 0 & \text{for } \sigma > 0, \quad \text{and} \quad \Phi_{\text{rig},0}'(0) = 0, \\ -\Psi_{\text{lef},0}''(s) - s \Psi_{\text{lef},0}(s) = \alpha_0 \Psi_{\text{lef},0}(s) & \text{for } s < 0, \quad \text{and} \quad \Psi_{\text{lef},0}(0) = \Phi_{\text{rig},0}(0). \end{cases}$$

We deduce first that $\Phi_{\text{rig},0} = 0$ and thus $\Psi_{\text{lef},0}(0) = 0$. This implies that α_0 is a zero of the reverse Airy function A. At this stage we can choose a positive integer n , take $\alpha_0 = z_A(n)$ and $\Psi_{\text{lef},0}$ as the corresponding normalized eigenfunction $g_{(n)}$.

- *Determination of α_1 .* Collecting the terms in κ , we get the equations:

$$\begin{cases} -\Phi''_{\text{rig},1} + \Phi_{\text{rig},1} = 0 & \text{for } \sigma > 0, \text{ and } \Phi'_{\text{rig},1}(0) = \Psi'_{\text{lef},0}(0), \\ -\Psi''_{\text{lef},1} - s\Psi_{\text{lef},1} - \alpha_0\Psi_{\text{lef},1} = \alpha_1\Psi_{\text{lef},0} & \text{for } s < 0, \text{ and } \Psi_{\text{lef},1}(0) = \Phi_{\text{rig},1}(0). \end{cases}$$

We find first:

$$\Phi_{\text{rig},1}(\sigma) = -\Psi'_{\text{lef},0}(0)e^{-\sigma}.$$

Moreover we obtain the existence of a number α_1 and of an exponentially decreasing $\Psi_{\text{lef},1}$ solution of the second equation with the help of the following lemma:

Lemma 2.2. *Let $n \geq 1$. We denote by $g_{(n)}$ an eigenvector of the operator $-\partial_s^2 - s$ associated with the eigenvalue $z_A(n)$ and normalized in $L^2(\mathbb{R}_-)$. Let $f = f(s)$ be a real function with exponential decay and let $c \in \mathbb{R}$. Then there exists a unique $\alpha \in \mathbb{R}$ such that the problem:*

$$(-\partial_s^2 - s - z_A(n))g = f + \alpha g_{(n)} \text{ in } \mathbb{R}_-, \text{ with } g(0) = c,$$

has a solution with exponential decay. There holds

$$\alpha = c g'_{(n)}(0) - \int_{-\infty}^0 f(s) g_{(n)}(s) ds.$$

- *Further terms.* A similar procedure can be reproduced at each step, providing the construction of $\Phi_{\text{rig},j}$, then α_j and $\Psi_{\text{lef},j}$, for any $j \geq 2$.
- *Expressions for quasimodes.* Relying on the previous iterative constructions we can set for all integer $J \geq 0$

$$(2.7) \quad \psi_{\kappa}^{[J]}(z) = \begin{cases} \sum_{j=0}^{J+2} \Psi_{\text{lef},j} \left(\frac{z}{\kappa^{2/3}} \right) \kappa^{j/3} & \text{when } z \leq 0 \\ \sum_{j=0}^{J+2} \Phi_{\text{rig},j} \left(\frac{z}{\kappa} \right) \kappa^{j/3} + \Psi'_{\text{lef},J+2}(0) \kappa^{J/3} z \chi \left(\frac{z}{\kappa} \right) & \text{when } z \geq 0, \end{cases}$$

where χ is a smooth cutoff function equal to 1 near 0. By construction, $\psi_{\kappa}^{[J]}$ and its first derivative are continuous in $z = 0$. Moreover $\psi_{\kappa}^{[J]}$ is exponentially decreasing as $z \rightarrow \pm\infty$. Therefore it belongs to the domain of $\mathcal{H}_{\text{toy}}(\kappa)$. With this remark and taking the error introduced by χ into account, we get for all $\kappa_0 > 0$:

$$(2.8) \quad \left\| \left(\mathcal{H}_{\text{toy}}(\kappa) - \kappa^{2/3} (z_A(n) + \sum_{j=1}^{J+2} \alpha_j \kappa^{j/3}) \right) \psi_{\kappa}^{[J]} \right\| \leq C(J, n, \kappa_0) \kappa^{1+J/3}, \quad \forall \kappa \leq \kappa_0.$$

Hence

$$\left\| \left(\mathcal{H}_{\text{toy}}(\kappa) - \kappa^{2/3} z_A(n) \right) \psi_{\kappa} \right\| \leq C(n, \kappa_0) \kappa, \quad \forall \kappa \leq \kappa_0,$$

and the spectral theorem applies. In particular, for κ small enough, the discrete spectrum of $\mathcal{H}_{\text{toy}}(\kappa)$ is not empty since $\mathfrak{S}_{\text{ess}}(\mathcal{H}_{\text{toy}}(\kappa)) = [1, +\infty)$. \square

Remark 2.3. We have proved in fact more than Proposition 2.1. The expression (2.7) of quasimodes and corresponding estimates (2.8) will provide an asymptotic expansion for the eigenvectors of $\mathcal{H}_{\text{toy}}(\kappa)$, once one knows Proposition 2.4 below.

2.2. Localization of the lowest eigenvalues. We now want to refine Proposition 2.1 by proving that the $\lambda_{\text{toy},n}(\kappa)$ are power series with respect to $\kappa^{1/3}$ and whose coefficients are given by (2.4). We begin to prove the following proposition:

Proposition 2.4. *For all $N_0 \in \mathbb{N}^*$, there exists $\kappa_0 > 0$ and $C > 0$ such that for $\kappa \in (0, \kappa_0)$:*

$$(2.9) \quad |\lambda_{\text{toy},n}(\kappa) - \kappa^{2/3} z_A(n)| \leq C\kappa, \quad n = 1, \dots, N_0.$$

Proof. Let $N_0 \in \mathbb{N}^*$. As a consequence of Proposition 2.1, we have in particular that, for all $\kappa \in (0, \kappa_0)$, the first N_0 eigenvalues $\lambda_{\text{toy},n}(\kappa)$ (denoted by λ_n for shortness) exist and satisfy:

$$(2.10) \quad |\lambda_n| \leq C(N_0) \kappa^{2/3}, \quad \kappa \in (0, \kappa_0), \quad n = 1, \dots, N_0.$$

Let us denote by ψ_n an eigenfunction associated with λ_n so that $\langle \psi_n, \psi_m \rangle = 0$ if $n \neq m$. For $z < 0$ we have:

$$-\kappa^2 \psi_n'' - z \psi_n = \lambda_n \psi_n.$$

Thus, there exists a coefficient $c_n(\kappa)$ such that:

$$(2.11) \quad \psi_n(z) = c_n(\kappa) A(\kappa^{-2/3} z + \kappa^{-2/3} \lambda_n), \quad z < 0.$$

For $z > 0$ we have the equation $-\kappa^2 \psi_n'' = \lambda_n \psi_n$, hence the existence of $d_n(\kappa)$ such that:

$$(2.12) \quad \psi_n(z) = d_n(\kappa) e^{-\kappa^{-1} z \sqrt{1 - \lambda_n}}, \quad z > 0.$$

The transmission conditions at $z = 0$ imply:

$$c_n(\kappa) A(\kappa^{-2/3} \lambda_n) = d_n(\kappa), \quad c_n(\kappa) \kappa^{1/3} A'(\kappa^{-2/3} \lambda_n) = -d_n(\kappa) \sqrt{1 - \lambda_n}.$$

This implies:

$$(2.13) \quad A(\kappa^{-2/3} \lambda_n) = -\frac{\kappa^{1/3}}{\sqrt{1 - \lambda_n}} A'(\kappa^{-2/3} \lambda_n).$$

We infer:

$$|A(\kappa^{-2/3} \lambda_n)| \leq C(N_0) \kappa^{1/3}.$$

Since $\kappa^{-2/3} \lambda_n$ is bounded, see (2.10), and the zeros of the Airy function being isolated and simple, we deduce that for all $n \in \{1, \dots, N_0\}$, there exists $p = p(n, \kappa)$ such that:

$$|\kappa^{-2/3} \lambda_n - z_A(p)| \leq C(N_0) \kappa^{1/3}.$$

Note that p is bounded too. It remains to prove that $p = n$ for κ small enough. In view of Proposition 2.1, it suffices now to prove that if κ is small enough and $n \neq m$ (with $n, m \leq N_0$), the integers $p(n, \kappa)$ and $p(m, \kappa)$ are distinct. Let us prove this by contradiction. Since the considered sets of integers n, m and p are finite, the negation of what we want to prove can be written as

$$\exists m, n, p \in \mathbb{N}, \quad \forall \kappa_1 > 0, \quad \exists \kappa \in (0, \kappa_1) \quad \text{such that} \quad p(m, \kappa) = p(n, \kappa) = p.$$

The eigenfunctions can be taken in the form:

$$\psi_j(z) = \begin{cases} A(\kappa^{-2/3} z + \kappa^{-2/3} \lambda_j) & \text{when } z \leq 0 \\ A(\kappa^{-2/3} \lambda_j) e^{-\kappa^{-1} z \sqrt{1 - \lambda_j}} & \text{when } z \geq 0, \end{cases} \quad \text{for } j = m, n,$$

and we have

$$\langle \psi_n, \psi_m \rangle = \int_{z < 0} A(\kappa^{-2/3}z + \kappa^{-2/3}\lambda_n)A(\kappa^{-2/3}z + \kappa^{-2/3}\lambda_m) dz + \mathcal{O}(\kappa^{5/3}) = 0.$$

A rescaling leads to:

$$\left| \int_{z < 0} A(z + \kappa^{-2/3}\lambda_n) A(z + \kappa^{-2/3}\lambda_m) dz \right| \leq C(N_0)\kappa.$$

By assumption, $\kappa^{-2/3}\lambda_n = z_A(p) + \mathcal{O}(\kappa^{1/3})$ and $\kappa^{-2/3}\lambda_m = z_A(p) + \mathcal{O}(\kappa^{1/3})$. For $j = n, m$, A being Lipschitz on $(-\infty, M]$ for all M , there exists $D(N_0) > 0$ such that for all $z < 0$:

$$|A(z + \kappa^{-2/3}\lambda_j) - A(z + z_A(p))| \leq D(N_0)\kappa^{1/3}, \quad \text{for } j = m, n,$$

so that:

$$\left| \int_{z < 0} A(z + \kappa^{-2/3}\lambda_n)A(z + \kappa^{-2/3}\lambda_m) dz - \int_{z < 0} A^2(z + z_A(p)) dz \right| \leq \tilde{D}(N_0)\kappa^{1/3}.$$

We deduce:

$$\forall \kappa_1 > 0, \quad \exists \kappa \in (0, \kappa_1) \quad \text{such that} \quad \left| \int_{z < 0} A^2(z + z_A(p)) dz \right| \leq \tilde{D}(N_0)\kappa^{1/3}$$

which leads to a contradiction and ends the proof of Proposition 2.4. \square

2.3. Proof of Theorem 1.3. Let us observe that Proposition 2.4 allows to separate the first N_0 eigenvalues when $\kappa < \kappa_0$. Let us write $\delta = \kappa^{1/3}$. We let:

$$\check{\lambda}_n(\delta) := \delta^{-2} \lambda_{\text{toy},n}(\delta^3),$$

so that $\check{\lambda}_n(\delta)$ is uniformly bounded for $n = 1, \dots, N_0$ and $\delta < \kappa_0^{1/3}$.

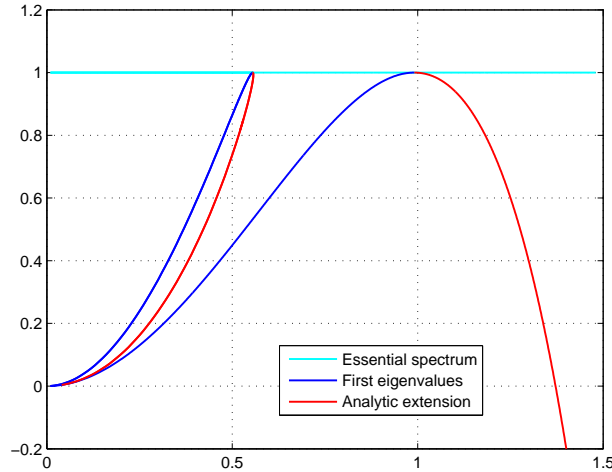


FIGURE 3. The first two eigenvalues $\lambda_{\text{toy},1}$ and $\lambda_{\text{toy},2}$ as functions of $\delta = \kappa^{1/3}$.

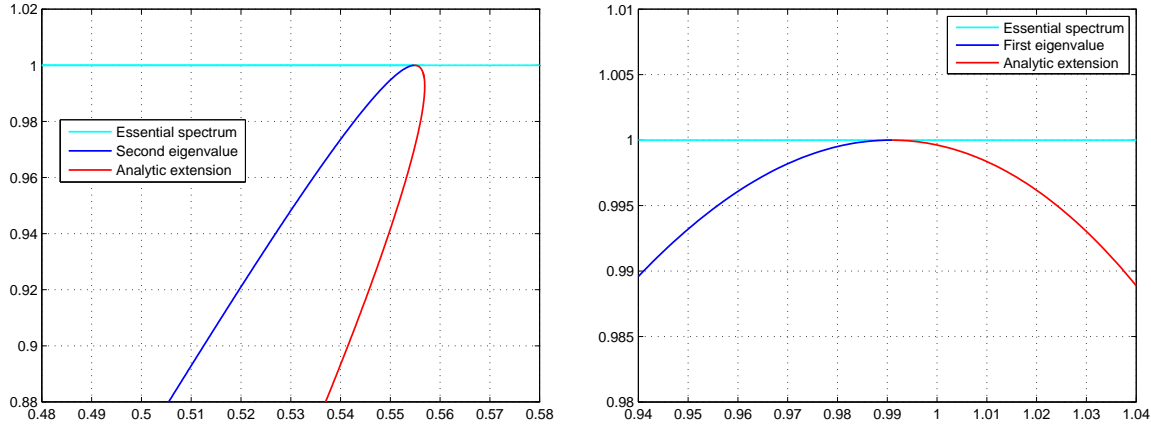


FIGURE 4. The eigenvalues $\lambda_{\text{toy},1}$ (left) and $\lambda_{\text{toy},2}$ (right) as functions of $\delta = \kappa^{1/3}$, zoom near the bottom of the essential spectrum.

We rewrite (2.13) in the form:

$$(2.14) \quad A(\check{\lambda}_n(\delta)) = -\frac{\delta}{\sqrt{1 - \delta^2 \check{\lambda}_n(\delta)}} A'(\check{\lambda}_n(\delta)).$$

We know that A is analytic and, using again the simplicity of its zeros, we can apply the analytic implicit function theorem near $\delta = 0$ and for all $n \in \{1, \dots, N_0\}$, which, together with (2.7)-(2.8) and Proposition 2.4, ends the proof of Theorem 1.3.

Remark 2.5. From (2.14), we can deduce that the $\check{\lambda}_n(\delta)$ are solutions of the analytic equation:

$$(2.15) \quad (1 - \delta^2 \check{\lambda})A(\check{\lambda})^2 - \delta^2 A'(\check{\lambda})^2 = 0$$

This equation provides an analytic extension of the functions $\delta \mapsto \check{\lambda}_n(\delta)$, hence of $\lambda_{\text{toy},n} = \delta^2 \check{\lambda}_n(\delta)$, in the sense of analytic curves. We represent in Figures 3 and 4 the first two eigenvalues and their analytic extensions. Taking the continuity and monotonicity of the eigenvalues with respect to δ into account, we can see that any branch which starts by $\delta \mapsto \lambda(\delta) = \delta^2 z_A + \mathcal{O}(\delta^3)$ represents an eigenvalue while $\lambda(\delta)$ is less than 1. Beyond 1, the Rayleigh quotient stays $\equiv 1$, but the curve $\lambda(\delta)$ has an analytic extension as a continuation of a branch of roots of the equation (2.15).

3. BORN-OPPENHEIMER APPROXIMATION FOR THE TRIANGLE

This section is devoted to the analysis of $\mathcal{H}_{\text{BO},\text{Tri}}(h)$ defined in (1.14). We are going to prove:

Theorem 3.1. *The eigenvalues of $\mathcal{H}_{\text{BO},\text{Tri}}(h)$, denoted by $\lambda_{\text{BO},\text{Tri},n}(h)$, admit the expansions:*

$$\lambda_{\text{BO},\text{Tri},n}(h) \underset{h \rightarrow 0}{\sim} \sum_{j \geq 0} \hat{\beta}_{j,n} h^{2j/3}, \quad \text{with} \quad \hat{\beta}_{0,n} = \frac{1}{8} \quad \text{and} \quad \hat{\beta}_{1,n} = (4\pi\sqrt{2})^{-2/3} z_A(n).$$

Again, the proof is essentially organized in two steps. The first step is the construction of quasimodes which proves that quasi-eigenvalues are close to true eigenvalues. The second step uses Agmon type exponential localization for true eigenvectors to prove that true eigenvalues are close to quasi-eigenvalues.

3.1. Quasimodes. In this subsection, we construct quasimodes and prove the proposition:

Proposition 3.2. *For all $N_0 \in \mathbb{N}^*$, there exists $h_0 > 0$ and $C > 0$ such that for $h \in (0, h_0)$:*

$$(3.1) \quad \text{dist} \left(\mathfrak{E}_{\text{dis}}(\mathcal{H}_{\text{BO, Tri}}(h)), \frac{1}{8} + h^{2/3} (4\pi\sqrt{2})^{-2/3} z_A(n) \right) \leq Ch^{4/3}, \quad n = 1, \dots, N_0.$$

Proof. The proper scale in x is $h^{2/3}$ as can be seen by approximating the potential in $x = 0$ by its tangent and recognizing the Airy operator. Thus, we will construct quasimodes ψ_h as functions of $s = h^{-2/3}x$: We look for quasimodes (λ_h, ψ_h) in the form of series

$$\lambda_h \sim \sum_{j \geq 0} \hat{\beta}_j h^{2j/3} \quad \text{and} \quad \psi_h(x) \sim \sum_{j \geq 0} \Psi_j(s) h^{2j/3}$$

in order to solve $\mathcal{H}_{\text{BO, Tri}}(h)\psi_h = \lambda_h\psi_h$ in the sense of formal series. A Taylor expansion at $x = 0$ of the potential V yields:

$$\mathcal{H}_{\text{BO, Tri}}(h) \sim -h^2 \partial_x^2 + \sum_{j \geq 0} V_j x^j, \quad \text{with} \quad V_0 = \frac{1}{8} \quad \text{and} \quad V_1 = -\frac{1}{4\pi\sqrt{2}},$$

which, in s variable, becomes

$$(3.2) \quad \mathcal{H}_{\text{BO, Tri}}(h) \sim \frac{1}{8} + h^{2/3} \left(-\partial_s^2 + V_1 s \right) + \sum_{j \geq 2} h^{2j/3} V_j s^j.$$

The construction of the terms $\hat{\beta}_j$ and Ψ_j is similar (even simpler) than for Proposition 2.1.

- The expansion (3.2) yields that $\hat{\beta}_0 = \frac{1}{8}$, and collecting the terms in $h^{2/3}$ and we obtain:

$$(3.3) \quad -\Psi_0''(s) - \frac{s}{4\pi\sqrt{2}} \Psi_0'(s) = \hat{\beta}_1 \Psi_0(s) \quad \forall s < 0 \quad \text{and} \quad \Psi_0(0) = 0.$$

Thus for any chosen positive integer n we can take $\hat{\beta}_1 = (4\pi\sqrt{2})^{-2/3} z_A(n)$ together with

$$(3.4) \quad \Psi_0(s) = \text{A} \left((4\pi\sqrt{2})^{-1/3} s + z_A(n) \right).$$

- Collecting the terms in $h^{4/3}$ we obtain

$$-\Psi_1''(s) + V_1 s \Psi_1'(s) - \hat{\beta}_1 \Psi_1'(s) = \hat{\beta}_2 \Psi_0 - V_2 s^2 \Psi_0 \quad \forall s < 0 \quad \text{and} \quad \Psi_1(0) = 0.$$

The compatibility condition states that $\hat{\beta}_2 \langle \Psi_0, \Psi_0 \rangle = V_2 \langle s^2 \Psi_0, \Psi_0 \rangle$. This determines $\hat{\beta}_2$ and implies the existence of a unique solution $\Psi_1 \in L^2(\mathbb{R}_-)$ such that $\langle \Psi_1, \Psi_0 \rangle = 0$.

- This procedure can be continued at any order and determines $(\hat{\beta}_j, \Psi_j)$ at each step. This construction depends on the choice of the integer n and can be done for any positive integer n .
- To conclude, we consider a smooth non-negative cutoff function χ^{lef} satisfying:

$$(3.5) \quad \chi^{\text{lef}}(x) = 1 \quad \text{for } x \in \left(-\frac{\pi}{\sqrt{2}}, +\infty \right) \quad \text{and} \quad \chi^{\text{lef}}(x) = 0 \quad \text{for } x \leq -\pi,$$

and introduce for any $J \geq 0$ the quasimode $(\beta_h^{[J]}, \psi_h^{[J]})$ with:

$$(3.6) \quad \beta_h^{[J]} = \sum_{j=0}^J \hat{\beta}_j h^{2j/3} \quad \text{and} \quad \psi_h^{[J]}(x) = \chi^{\text{lef}}(x) \sum_{j=0}^J \Psi_j\left(\frac{x}{h^{2/3}}\right) h^{2j/3}.$$

Thanks to this cut-off $\psi_h^{[J]}$ satisfies Dirichlet condition in $-\pi\sqrt{2}$, and in 0 by construction. Using the exponential decay of $x \mapsto \Psi_j(h^{-2/3}x)$ and the definition of Ψ_j and $\hat{\beta}_j$, we get for any $h_0 > 0$ the existence of $C(n, J, h_0) > 0$ such that:

$$(3.7) \quad \left\| (\mathcal{H}_{\text{BO, Tri}}(h) - \beta_h^{[J]}) \psi_h^{[J]} \right\| \leq C(n, J, h_0) h^{2(J+1)/3}, \quad \forall h \in (0, h_0).$$

This proves the existence of quasimodes at any order and ends the proof of Proposition 3.2. \square

3.2. Agmon estimates. In this subsection, we prove Agmon estimates (see [1, 2]) for the eigenfunctions of $\mathcal{H}_{\text{BO, Tri}}(h)$. The role of Agmon estimates is to replace an explicit knowledge of the solution at infinity like in (2.11)-(2.12) by suboptimal exponential estimates.

Here we prove two kinds of estimates: near $x = 0$ and near $x = -\pi\sqrt{2}$. In the analysis of triangles (cf. Section 4.2), we will meet the same estimates. Let us consider an eigenpair (λ, ψ) of $\mathcal{H}_{\text{BO, Tri}}(h)$. The Agmon identity writes, for some Lipschitz function Φ to be determined:

$$(3.8) \quad \int_{-\pi\sqrt{2}}^0 h^2 |\partial_x(e^\Phi \psi)|^2 + V(x) |e^\Phi \psi|^2 - h^2 |\Phi' e^\Phi|^2 - \lambda |(e^\Phi \psi)|^2 dx = 0.$$

It is a consequence of Proposition 3.2 that the lowest N_0 eigenvalues λ of $\mathcal{H}_{\text{BO, Tri}}(h)$ satisfy:

$$(3.9) \quad \left| \lambda - \frac{1}{8} \right| \leq \Gamma_0 h^{2/3},$$

for some positive constant Γ_0 depending on N_0 .

3.2.1. Agmon estimates near $x = 0$. We use (3.8) and the convexity of V to get the inequality:

$$\int_{-\pi\sqrt{2}}^0 h^2 |\partial_x(e^\Phi \psi)|^2 + \left(\frac{1}{8} - \frac{x}{4\pi\sqrt{2}} \right) |e^\Phi \psi|^2 - h^2 |\Phi' e^\Phi|^2 - \lambda |(e^\Phi \psi)|^2 dx \leq 0.$$

With (3.9), we deduce:

$$\int_{-\pi\sqrt{2}}^0 -\frac{x}{4\pi\sqrt{2}} |e^\Phi \psi|^2 - h^2 |\Phi' e^\Phi|^2 - Ch^{2/3} |(e^\Phi \psi)|^2 dx \leq 0.$$

This leads to the choice

$$\Phi(x) = \eta h^{-1} |x|^{3/2},$$

for a number $\eta > 0$ to be chosen small enough. We get:

$$\int_{-\pi\sqrt{2}}^0 \left(\frac{|x|}{4\pi\sqrt{2}} - \frac{9}{4} \eta^2 |x| - Ch^{2/3} \right) |e^\Phi \psi|^2 dx \leq 0.$$

For η small enough, we obtain the existence of $\tilde{\eta} > 0$ such that:

$$\int_{-\pi\sqrt{2}}^0 (\tilde{\eta} |x| - Ch^{2/3}) |e^\Phi \psi|^2 dx \leq 0.$$

Splitting the integral into the parts $-\pi\sqrt{2} < x < -Dh^{2/3}$ (where Φ is unbounded) and $-Dh^{2/3} < x < 0$ (where Φ is bounded) with $\tilde{\eta}D - C = d > 0$, we find:

$$\begin{aligned} \int_{-\pi\sqrt{2}}^{-Dh^{2/3}} dh^{2/3} |e^{\Phi}\psi|^2 dx &\leq \int_{-\pi\sqrt{2}}^{-Dh^{2/3}} (\tilde{\eta}|x| - Ch^{2/3}) |e^{\Phi}\psi|^2 dx \\ &\leq \int_{-Dh^{2/3}}^0 (\tilde{\eta}|x| + Ch^{2/3}) |e^{\Phi}\psi|^2 dx \leq \tilde{C}h^{2/3} \int_{-Dh^{2/3}}^0 |\psi|^2 dx. \end{aligned}$$

We deduce the proposition:

Proposition 3.3. *Let $\Gamma_0 > 0$. There exist $h_0 > 0$, $C_0 > 0$ and $\eta_0 > 0$ such that for $h \in (0, h_0)$ and all eigenpair (λ, ψ) of $\mathcal{H}_{\text{BO}, \text{Tri}}(h)$ satisfying $|\lambda - \frac{1}{8}| \leq \Gamma_0 h^{2/3}$, we have:*

$$\int_{-\pi\sqrt{2}}^0 e^{\eta_0 h^{-1}|x|^{3/2}} (|\psi|^2 + |h^{2/3}\partial_x\psi|^2) dx \leq C_0 \|\psi\|^2.$$

3.2.2. *Agmon estimates near $x = -\pi\sqrt{2}$.* We use again (3.8) and (3.9):

$$\int_{-\pi\sqrt{2}}^0 h^2 |\partial_x(e^{\Phi}\psi)|^2 + \left(\frac{\pi^2}{4(x + \pi\sqrt{2})^2} - \frac{1}{8} \right) |e^{\Phi}\psi|^2 - h^2 |\Phi' e^{\Phi}\psi|^2 - Ch^{2/3} |(e^{\Phi}\psi)|^2 dx \leq 0.$$

We take:

$$\Phi(x) = -\rho h^{-1} \ln(D^{-1}(x + \pi\sqrt{2})),$$

where we choose $\rho \in (0, \frac{\pi}{2})$ so that there holds:

$$\int_{-\pi\sqrt{2}}^0 \left(\left(\frac{\pi^2}{4} - \rho^2 \right) (x + \pi\sqrt{2})^{-2} - \frac{1}{8} \right) |e^{\Phi}\psi|^2 - Ch^{2/3} |(e^{\Phi}\psi)|^2 dx \leq 0,$$

and $D > 0$ large enough so that

$$\left(\frac{\pi^2}{4} - \rho^2 \right) D^2 - \frac{1}{8} > 0.$$

Then we split the integral into the parts $-\pi\sqrt{2} < x < -\pi\sqrt{2} + D$ (where Φ is unbounded) and $-\pi\sqrt{2} + D < x < 0$ (where Φ is bounded) and the same procedure as in the previous paragraph leads to the proposition:

Proposition 3.4. *Let $\Gamma_0 > 0$ and $\rho_0 \in (0, \frac{\pi}{2})$. There exist $h_0 > 0$, $C_0 > 0$ such that for any $h \in (0, h_0)$ and all eigenpair (λ, ψ) of $\mathcal{H}_{\text{BO}, \text{Tri}}(h)$ satisfying $|\lambda - \frac{1}{8}| \leq \Gamma_0 h^{2/3}$, we have:*

$$\int_{-\pi\sqrt{2}}^0 (x + \pi\sqrt{2})^{-\rho_0/h} (|\psi|^2 + |h\partial_x\psi|^2) dx \leq C_0 \|\psi\|^2.$$

3.3. **Proof of Theorem 3.1.** Let us fix N_0 and consider the N_0 first eigenvalues of $\mathcal{H}_{\text{BO}, \text{Tri}}(h)$ denoted by $\lambda_n = \lambda_{\text{BO}, \text{Tri}, n}(h)$. For each $n \in \{1, \dots, N_0\}$, we choose a normalized ψ_n in the eigenspace of λ_n so that $\langle \psi_n, \psi_m \rangle = 0$ for $n \neq m$. Let us introduce the space:

$$\mathfrak{E}_{N_0}(h) = \text{span}(\psi_1, \dots, \psi_{N_0}).$$

We recall that, for h small enough, (3.9) holds. We can write:

$$\mathcal{H}_{\text{BO}, \text{Tri}}(h)\psi_n = \lambda_n\psi_n$$

so that (the ψ_n are orthogonal in L^2 and for the quadratic form), for all $\psi \in \mathfrak{E}_{N_0}(h)$:

$$Q_{\text{BO, Tri}, h}(\psi) \leq \lambda_{N_0} \|\psi\|^2.$$

For ε_0 small enough we introduce a smooth cutoff function χ being 0 for $|x + \pi\sqrt{2}| \leq \varepsilon_0$ and 1 for $|x + \pi\sqrt{2}| \geq 2\varepsilon_0$. Proposition 3.4 implies that:

$$Q_{\text{BO, Tri}, h}(\chi\psi) \leq (\lambda_{N_0} + \mathcal{O}(h^\infty)) \|\chi\psi\|^2.$$

Then, the convexity of the potential allows to write:

$$\left\langle \left(-h^2 \partial_x^2 - \frac{1}{4\pi\sqrt{2}} x + \frac{1}{8} \right) \chi\psi, \chi\psi \right\rangle \leq (\lambda_{N_0} + \mathcal{O}(h^\infty)) \|\chi\psi\|^2,$$

where we have used the convexity. The dimension of $\chi\mathfrak{E}_{N_0}(h)$ is N_0 so that, with the properties of the Airy operator and the mini-max principle, we get:

$$\frac{1}{8} + (4\pi\sqrt{2})^{-2/3} z_A(N_0) \leq \lambda_{N_0} + \mathcal{O}(h^\infty).$$

This is true for all fixed N_0 and, combined with Proposition 3.2, provides the separation of the lowest eigenvalues of $\mathcal{H}_{\text{BO, Tri}}(h)$:

$$\left| \lambda_{\text{BO, Tri}, n}(h) - \left(\frac{1}{8} + h^{2/3} (4\pi\sqrt{2})^{-2/3} z_A(n) \right) \right| \leq Ch^{4/3}.$$

Finally, with (3.6)-(3.7), we obtain Theorem 3.1.

4. TRIANGLE WITH DIRICHLET BOUNDARY CONDITION

The aim of this section is to prove Theorem 1.4. As usual, the proof will be divided into two main steps: a construction of quasimodes and the use of the true eigenfunctions of $\mathcal{L}_{\text{Tri}}(h)$ as quasimodes for the Born-Oppenheimer approximation in order to obtain a lower bound for the true eigenvalues.

We first perform a change of variables to transform the triangle into a rectangle:

$$(4.1) \quad u = x \in (-\pi\sqrt{2}, 0), \quad t = \frac{y}{x + \pi\sqrt{2}} \in (-1, 1).$$

so that Tri is transformed into

$$(4.2) \quad \text{Rec} = (-\pi\sqrt{2}, 0) \times (-1, 1).$$

The operator $\mathcal{L}_{\text{Tri}}(h)$ becomes:

$$(4.3) \quad \mathcal{L}_{\text{Rec}}(h)(u, t; \partial_u, \partial_t) = -h^2 \left(\partial_u - \frac{t}{u + \pi\sqrt{2}} \partial_t \right)^2 - \frac{1}{(u + \pi\sqrt{2})^2} \partial_t^2,$$

with Dirichlet boundary conditions on ∂Rec . The equation $\mathcal{L}_{\text{Tri}}(h)\psi_h = \beta_h\psi_h$ is transformed into the equation

$$\mathcal{L}_{\text{Rec}}(h)\hat{\psi}_h = \beta_h\hat{\psi}_h \quad \text{with} \quad \hat{\psi}_h(u, t) = \psi_h(x, y).$$

4.1. Quasimodes. This subsection is devoted to the proof of the following proposition.

Proposition 4.1. *There are sequences $(\beta_{j,n})_{j \geq 0}$ for any integer $n \geq 1$ so that there holds: For all $N_0 \in \mathbb{R}$ and $J \in \mathbb{N}$, there exists $h_0 > 0$ and $C > 0$ such that for $h \in (0, h_0)$*

$$(4.4) \quad \text{dist} \left(\mathfrak{S}_{\text{dis}}(\mathcal{L}_{\text{Tri}}(h)), \sum_{j=0}^J \beta_{j,n} h^{j/3} \right) \leq C h^{(J+1)/3}, \quad n = 1, \dots, N_0.$$

Moreover, we have: $\beta_{0,n} = \frac{1}{8}$, $\beta_{1,n} = 0$, and $\beta_{2,n} = (4\pi\sqrt{2})^{-2/3} z_A(n)$.

Proof. We want to construct quasimodes (β_h, ψ_h) for the operator $\mathcal{L}_{\text{Tri}}(h)(\partial_x, \partial_y)$. It will be more convenient to work on the rectangle Rec with the operator $\mathcal{L}_{\text{Rec}}(h)(u, t; \partial_u, \partial_t)$. We introduce the new scales

$$(4.5) \quad s = h^{-2/3}u \quad \text{and} \quad \sigma = h^{-1}u,$$

and we look quasimodes $(\beta_h, \hat{\psi}_h)$ in the form of series

$$(4.6) \quad \beta_h \sim \sum_{j \geq 0} \beta_j h^{j/3} \quad \text{and} \quad \hat{\psi}_h(u, t) \sim \sum_{j \geq 0} (\Psi_j(s, t) + \Phi_j(\sigma, t)) h^{j/3}$$

in order to solve $\mathcal{L}_{\text{Rec}}(h)\hat{\psi}_h = \beta_h \hat{\psi}_h$ in the sense of formal series. As will be seen hereafter, an Ansatz containing the scale $h^{-2/3}u$ alone (like for the Born-Oppenheimer operator $\mathcal{H}_{\text{BO, Tri}}(h)$) is not sufficient to construct quasimodes for $\mathcal{L}_{\text{Rec}}(h)$. Expanding the operator in powers of $h^{2/3}$, we obtain the formal series:

$$(4.7) \quad \mathcal{L}_{\text{Rec}}(h)(h^{2/3}s, t; h^{-2/3}\partial_s, \partial_t) \sim \sum_{j \geq 0} \mathcal{L}_{2j} h^{2j/3} \quad \text{with leading term} \quad \mathcal{L}_0 = -\frac{1}{2\pi^2} \partial_t^2$$

and in powers of h :

$$(4.8) \quad \mathcal{L}_{\text{Rec}}(h)(h\sigma, t; h^{-1}\partial_\sigma, \partial_t) \sim \sum_{j \geq 0} \mathcal{N}_{3j} h^j \quad \text{with leading term} \quad \mathcal{N}_0 = -\partial_\sigma^2 - \frac{1}{2\pi^2} \partial_t^2.$$

In what follows, in order to finally ensure the Dirichlet conditions on the triangle Tri, we will require for our Ansatz the boundary conditions, for any $j \in \mathbb{N}$:

$$(4.9) \quad \Psi_j(0, t) + \Phi_j(0, t) = 0, \quad -1 \leq t \leq 1$$

$$(4.10) \quad \Psi_j(s, \pm 1) = 0, \quad s < 0 \quad \text{and} \quad \Phi_j(\sigma, \pm 1) = 0, \quad \sigma \leq 0.$$

More specifically, we are interested in the ground energy $\lambda = \frac{1}{8}$ of the Dirichlet problem for \mathcal{L}_0 on the interval $(-1, 1)$. Thus we have to solve Dirichlet problems for the operators $\mathcal{N}_0 - \frac{1}{8}$ and $\mathcal{L}_0 - \frac{1}{8}$ on the half-strip

$$(4.11) \quad \text{Hst} = \mathbb{R}_- \times (-1, 1),$$

and look for *exponentially decreasing solutions*. The situation is similar to that encountered in thin structure asymptotics with Neumann boundary conditions. The following lemma shares common features with the Saint-Venant principle, see for example [9, §2].

Lemma 4.2. *We denote the first normalized eigenvector of \mathcal{L}_0 on $H_0^1((-1, 1))$ by c_0 :*

$$c_0(t) = \cos\left(\frac{\pi t}{2}\right).$$

Let $F = F(\sigma, t)$ be a function in $L^2(\text{Hst})$ with exponential decay with respect to σ and let $G \in H^{3/2}((-1, 1))$ be a function of t with $G(\pm 1) = 0$. Then there exists a unique $\gamma \in \mathbb{R}$ such that the problem

$$\left(\mathcal{N}_0 - \frac{1}{8}\right) \Phi = F \text{ in Hst}, \quad \Phi(\sigma, \pm 1) = 0, \quad \Phi(0, t) = G(t) + \gamma c_0(t),$$

admits a (unique) solution in $H^2(\text{Hst})$ with exponential decay. There holds

$$\gamma = - \int_{-\infty}^0 \int_{-1}^1 F(\sigma, t) \sigma c_0(t) d\sigma dt - \int_{-1}^1 G(t) c_0(t) dt.$$

The following two lemmas are consequences of the Fredholm alternative.

Lemma 4.3. *Let $F = F(s, t)$ be a function in $L^2(\text{Hst})$ with exponential decay with respect to s . Then, there exist solution(s) Ψ such that:*

$$\left(\mathcal{L}_0 - \frac{1}{8}\right) \Psi = F \text{ in Hst}, \quad \Psi(s, \pm 1) = 0$$

if and only if $\langle F(s, \cdot), c_0 \rangle_t = 0$ for all $s < 0$. In this case, $\Psi(s, t) = \Psi^\perp(s, t) + g(s)c_0(t)$ where Ψ^\perp satisfies $\langle \Psi(s, \cdot), c_0 \rangle_t \equiv 0$ and has also an exponential decay.

Then, we will also need a rescaled version of Lemma 2.2.

Lemma 4.4. *Let $n \geq 1$. We recall that $z_A(n)$ is the n -th zero of the reverse Airy function, and we denote by*

$$g_{(n)} = \mathbf{A}\left((4\pi\sqrt{2})^{-1/3}s + z_A(n)\right)$$

the eigenvector of the operator $-\partial_s^2 - (4\pi\sqrt{2})^{-1}s$ with Dirichlet condition on \mathbb{R}_- associated with the eigenvalue $(4\pi\sqrt{2})^{-2/3}z_A(n)$. Let $f = f(s)$ be a function in $L^2(\mathbb{R}_-)$ with exponential decay and let $c \in \mathbb{R}$. Then there exists a unique $\beta \in \mathbb{R}$ such that the problem:

$$\left(-\partial_s^2 - \frac{s}{4\pi\sqrt{2}} - (4\pi\sqrt{2})^{-2/3}z_A(n)\right) g = f + \beta g_{(n)} \text{ in } \mathbb{R}_-, \text{ with } g(0) = c,$$

has a solution in $H^2(\mathbb{R}_-)$ with exponential decay.

Now we can start the construction of the terms of our Ansatz (4.6).

- *Terms in h^0 .* The equations provided by the constant terms are:

$$\mathcal{L}_0 \Psi_0 = \beta_0 \Psi_0(s, t), \quad \mathcal{N}_0 \Phi_0 = \beta_0 \Phi_0(s, t)$$

with boundary conditions (4.9)-(4.10) for $j = 0$, so that we choose $\beta_0 = \frac{1}{8}$ and $\Psi_0(s, t) = g_0(s)c_0(t)$. The boundary condition (4.9) provides: $\Phi_0(0, t) = -g_0(0)c_0(t)$ so that, with Lemma 4.2, we get $g_0(0) = 0$ and $\Phi_0 = 0$. The function $g_0(s)$ will be determined later.

- *Terms in $h^{1/3}$.* Collecting the terms of order $h^{1/3}$, we are led to:

$$(\mathcal{L}_0 - \beta_0)\Psi_1 = \beta_1\Psi_0 - \mathcal{L}_1\Psi_1 = \beta_1\Psi_0, \quad (\mathcal{N}_0 - \beta_0)\Phi_1 = \beta_1\Phi_0 - \mathcal{N}_1\Phi_1 = 0$$

with boundary conditions (4.9)-(4.10) for $j = 1$. Using Lemma 4.3, we find $\beta_1 = 0$, $\Psi_1(s, t) = g_1(s)c_0(t)$, $g_1(0) = 0$ and $\Phi_1 = 0$.

- *Terms in $h^{2/3}$.* We get:

$$(\mathcal{L}_0 - \beta_0)\Psi_2 = \beta_2\Psi_0 - \mathcal{L}_2\Psi_0, \quad (\mathcal{N}_0 - \beta_0)\Phi_2 = 0,$$

where $\mathcal{L}_2 = -\partial_s^2 + \frac{s}{\pi^3\sqrt{2}}\partial_t^2$ and with boundary conditions (4.9)-(4.10) for $j = 2$. Lemma 4.3 provides the equation in s variable

$$\langle (\beta_2\Psi_0 - \mathcal{L}_2\Psi_0(s, \cdot)), c_0 \rangle_t = 0, \quad s < 0.$$

Taking the formula $\Psi_0 = g_0(s)c_0(t)$ into account this becomes

$$\beta_2 g_0(s) = \left(-\partial_s^2 - \frac{s}{4\pi\sqrt{2}} \right) g_0(s).$$

This equation leads to take $\beta_2 = (4\pi\sqrt{2})^{-2/3}z_A(n)$ and for g_0 the corresponding eigenfunction $g_{(n)}$. We deduce $(\mathcal{L}_0 - \beta_0)\Psi_2 = 0$, then get $\Psi_2(s, t) = g_2(s)c_0(t)$ with $g_2(0) = 0$ and $\Phi_2 = 0$.

- *Terms in $h^{3/3}$.* We get:

$$(\mathcal{L}_0 - \beta_0)\Psi_3 = \beta_3\Psi_0 + \beta_2\Psi_1 - \mathcal{L}_2\Psi_1, \quad (\mathcal{N}_0 - \beta_0)\Phi_3 = 0,$$

with boundary conditions (4.9)-(4.10) for $j = 3$. The scalar product with c_0 (Lemma 4.3) and then the scalar product with g_0 (Lemma 4.4) provide $\beta_3 = 0$ and $g_1 = 0$. We deduce: $\Psi_3(s, t) = g_3(s)c_0(t)$, and $g_3(0) = 0$, $\Phi_3 = 0$.

- *Terms in $h^{4/3}$.* We get:

$$(\mathcal{L}_0 - \beta_0)\Psi_4 = \beta_4\Psi_0 + \beta_2\Psi_2 - \mathcal{L}_4\Psi_0 - \mathcal{L}_2\Psi_2, \quad (\mathcal{N}_0 - \beta_0)\Phi_4 = 0,$$

where

$$\mathcal{L}_4 = \frac{\sqrt{2}}{\pi} t \partial_t \partial_s - \frac{3}{4\pi^4} s^2 \partial_t^2,$$

and with boundary conditions (4.9)-(4.10) for $j = 4$. The scalar product with c_0 provides an equation for g_2 and the scalar product with g_0 determines β_4 . By Lemma 4.3 this step determines $\Psi_4 = \Psi_4^\perp + c_0(t)g_4(s)$ with a non-zero Ψ_4^\perp and $g_4(0) = 0$. Since by construction $\langle \Psi_4^\perp(0, \cdot), c_0 \rangle_t = 0$, Lemma 4.2 yields a solution Φ_4 with exponential decay. Note that it also satisfies $\langle \Phi_4(\sigma, \cdot), c_0 \rangle_t = 0$ for all $\sigma < 0$.

- *Terms in $h^{5/3}$.* We get:

$$(\mathcal{L}_0 - \beta_0)\Psi_5 = \beta_5\Psi_0 + \beta_2\Psi_3 - \mathcal{L}_2\Psi_3, \quad (\mathcal{N}_0 - \beta_0)\Phi_5 = 0,$$

and with boundary conditions (4.9)-(4.10) for $j = 5$. We find $\beta_5 = 0$, $g_3 = 0$, $\Psi_5 = g_5(s)c_0(t)$, $g_5(0) = 0$, $\Phi_5 = 0$.

- *Terms in $h^{6/3}$.* We get:

$$(\mathcal{L}_0 - \beta_0)\Psi_6 = \beta_6\Psi_0 + \beta_4\Psi_2 + \beta_2\Psi_4 - \mathcal{L}_2\Psi_4 - \mathcal{L}_4\Psi_2, \quad (\mathcal{N}_0 - \beta_0)\Phi_6 = \beta_2\Phi_4,$$

and with boundary conditions (4.9)-(4.10) for $j = 6$. This determines β_6 , g_4 , $\Psi_6 = \Psi_6^\perp + c_0(t)g_6(s)$, $g_6(0) = 0$, and Φ_6 with exponential decay due to the orthogonality of Φ_4 to c_0 .

- *Terms in $h^{7/3}$.* We get:

$$(\mathcal{L}_0 - \beta_0)\Psi_7 = \beta_7\Psi_0 + \beta_2\Psi_5 - \mathcal{L}_2\Psi_5, \quad (\mathcal{N}_0 - \beta_0)\Phi_7 = -\mathcal{N}_3\Phi_4,$$

where

$$\mathcal{N}_3 = \frac{2}{\pi\sqrt{2}}t\partial_\sigma\partial_t + \frac{\sigma}{\pi^3\sqrt{2}}\partial_t^2,$$

and with boundary conditions (4.9)-(4.10) for $j = 7$. We take $\beta_7 = 0$, $g_5 = 0$, $\Psi_7 = g_7(s)c_0(t)$. Then, Lemma 4.2 induces a value for the trace $g_7(0)$ so that there exists Φ_7 with an exponential decay. Note that if there holds:

$$(4.12) \quad \int_{\text{Hst}} (\mathcal{N}_3\Phi_4)(\sigma, t) \sigma c_0(t) d\sigma dt \neq 0,$$

we would deduce by Lemma 4.2 that $g_7(0) \neq 0$.

- *Terms in $h^{8/3}$.* We get:

$$\begin{aligned} (\mathcal{L}_0 - \beta_0)\Psi_8 &= \beta_8\Psi_0 + \beta_6\Psi_2 + \beta_4\Psi_4 + \beta_2\Psi_6 - \mathcal{L}_8\Psi_0 - \mathcal{L}_6\Psi_2 - \mathcal{L}_4\Psi_4 - \mathcal{L}_2\Psi_6, \\ (\mathcal{N}_0 - \beta_0)\Phi_8 &= \beta_4\Phi_4 + \beta_2\Phi_6. \end{aligned}$$

This determines β_8 , g_6 and $\Psi_8 = \Psi_8^\perp + c_0g_8$, the trace $g_8(0)$ and the exponentially decreasing solution Φ_8 .

- *Terms in $h^{9/3}$.* We get:

$$(\mathcal{L}_0 - \beta_0)\Psi_9 = \beta_9\Psi_0 + \beta_2\Psi_7 - \mathcal{L}_2\Psi_7, \quad (\mathcal{N}_0 - \beta_0)\Phi_9 = \beta_2\Phi_7 - \mathcal{N}_3\Phi_6.$$

We find β_9 , g_7 and then $\Psi_9 = \Psi_9^\perp + c_0g_9$ and $g_9(0)$, Φ_9 . Note that if $g_7(0) \neq 0$, i.e. if (4.12) holds, we would deduce that $\beta_9 \neq 0$.

- *Continuation.* The construction of the further terms goes on along the same lines. This leads to define the quasimodes for $\mathcal{L}_{\text{Tri}}(h)$:

$$(4.13) \quad \beta_h^{[J]} = \sum_{j=0}^J \beta_j h^{j/3},$$

$$(4.14) \quad \psi_h^{[J]} = \chi^{\text{lef}}(x) \sum_{j=0}^J \left(\Psi_j \left(\frac{x}{h^{2/3}}, \frac{y}{x + \pi\sqrt{2}} \right) + \Phi_j \left(\frac{x}{h}, \frac{y}{x + \pi\sqrt{2}} \right) \right) h^{j/3},$$

where χ^{lef} is defined in (3.5). The conclusion follows from the spectral theorem. \square

4.2. Agmon estimates. On our way to prove Theorem 1.4, we now state Agmon estimates like for $\mathcal{H}_{\text{BO}, \text{Tri}}(h)$. Let us first notice that, due to Proposition 4.1, the lowest eigenvalues of $\mathcal{L}_{\text{Tri}}(h)$ still satisfy an estimate like (3.9). It turns out that we have the following lower bound, for all $\psi \in \text{Dom}(Q_{\text{Tri}, h})$:

$$Q_{\text{Tri}, h}(\psi) \geq \int_{\text{Tri}} h^2 |\partial_x \psi|^2 + \frac{\pi^2}{4(x + \pi\sqrt{2})^2} |\psi|^2 dx dy.$$

Thus, the analysis giving Propositions 3.3 and 3.4 applies exactly in the same way and we obtain:

Proposition 4.5. *Let $\Gamma_0 > 0$. There exist $h_0 > 0$, $C_0 > 0$ and $\eta_0 > 0$ such that for $h \in (0, h_0)$ and all eigenpair (λ, ψ) of $\mathcal{L}_{\text{Tri}}(h)$ satisfying $|\lambda - \frac{1}{8}| \leq \Gamma_0 h^{2/3}$, we have:*

$$\int_{\text{Tri}} e^{\eta_0 h^{-1}|x|^{3/2}} \left(|\psi|^2 + |h^{2/3} \partial_x \psi|^2 \right) dx dy \leq C_0 \|\psi\|^2.$$

Proposition 4.6. *Let $\Gamma_0 > 0$. There exist $h_0 > 0$, $C_0 > 0$ and $\rho_0 > 0$ such that for $h \in (0, h_0)$ and all eigenpair (λ, ψ) of $\mathcal{L}_{\text{Tri}}(h)$ satisfying $|\lambda - \frac{1}{8}| \leq \Gamma_0 h^{2/3}$, we have:*

$$\int_{\text{Tri}} (x + \pi\sqrt{2})^{-\rho_0/h} \left(|\psi|^2 + |h \partial_x \psi|^2 \right) dx dy \leq C_0 \|\psi\|^2.$$

4.3. Approximation of the first eigenfunctions by tensor products. In this subsection, we will work with the operator $\mathcal{L}_{\text{Rec}}(h)$ rather than $\mathcal{L}_{\text{Tri}}(h)$. Let us consider the first N_0 eigenvalues of $\mathcal{L}_{\text{Rec}}(h)$ (shortly denoted by λ_n). In each corresponding eigenspace, we choose a normalized eigenfunction $\hat{\psi}_n$ so that $\langle \hat{\psi}_n, \hat{\psi}_m \rangle = 0$ if $n \neq m$. As in Section 3.3, we introduce:

$$\mathfrak{E}_{N_0}(h) = \text{span}(\hat{\psi}_1, \dots, \hat{\psi}_{N_0}).$$

Let us define Q_{Rec}^0 the following quadratic form:

$$Q_{\text{Rec}}^0(\hat{\psi}) = \int_{\text{Rec}} \left(\frac{1}{2\pi^2} |\partial_t \hat{\psi}|^2 - \frac{1}{8} |\hat{\psi}|^2 \right) (u + \pi\sqrt{2}) du dt,$$

associated with the operator $\mathcal{L}_{\text{Rec}}^0 = \text{Id}_u \otimes \left(-\frac{1}{2\pi^2} \partial_t^2 - \frac{1}{8} \right)$ on $L^2(\text{Rec}, (u + \pi\sqrt{2}) du dt)$. We consider the projection on the eigenspace associated with the eigenvalue 0 of $-\frac{1}{2\pi^2} \partial_t^2 - \frac{1}{8}$:

$$\Pi_0 \hat{\psi}(u, t) = \langle \hat{\psi}(u, \cdot), c_0 \rangle_t c_0(t),$$

where we recall that $c_0(t) = \cos\left(\frac{\pi}{2}t\right)$. We can now state a first approximation result:

Proposition 4.7. *There exist $h_0 > 0$ and $C > 0$ such that for $h \in (0, h_0)$ and all $\hat{\psi} \in \mathfrak{E}_{N_0}(h)$:*

$$0 \leq Q_{\text{Rec}}^0(\hat{\psi}) \leq Ch^{2/3} \|\hat{\psi}\|^2$$

and

$$\|(\text{Id} - \Pi_0)\hat{\psi}\| + \|\partial_t(\text{Id} - \Pi_0)\hat{\psi}\| \leq Ch^{1/3} \|\hat{\psi}\|.$$

Moreover, $\Pi_0 : \mathfrak{E}_{N_0}(h) \rightarrow \Pi_0(\mathfrak{E}_{N_0}(h))$ is an isomorphism.

Proof. If $\hat{\psi} = \hat{\psi}_n$, we have:

$$Q_{\text{Rec},h}(\hat{\psi}_n) = \lambda_n \|\hat{\psi}_n\|^2.$$

From this we infer:

$$Q_{\text{Rec},h}(\hat{\psi}_n) \leq \left(\frac{1}{8} + Ch^{2/3} \right) \|\hat{\psi}_n\|^2.$$

The orthogonality of the $\hat{\psi}_n$ (in L^2 and for the quadratic form) allows to extend this inequality to $\hat{\psi} \in \mathfrak{E}_{N_0}(h)$:

$$Q_{\text{Rec},h}(\hat{\psi}) \leq \left(\frac{1}{8} + Ch^{2/3} \right) \|\hat{\psi}\|^2.$$

This clearly implies:

$$Q_{\text{Rec}}^0(\hat{\psi}) \leq Ch^{2/3} \|\hat{\psi}\|^2.$$

$\Pi_0 \hat{\psi}$ being in the kernel of $\mathcal{L}_{\text{Rec}}^0$, we have:

$$Q_{\text{Rec}}^0(\hat{\psi}) = Q_{\text{Rec}}^0((\text{Id} - \Pi_0)\hat{\psi}).$$

If we denote by μ_2 the second eigenvalue of the $1D$ operator $-\frac{1}{2\pi^2}\partial_t^2 - \frac{1}{8}$, we get by the min-max principle:

$$Q_{\text{Rec}}^0((\text{Id} - \Pi_0)\hat{\psi}) \geq \mu_2 \|(\text{Id} - \Pi_0)\hat{\psi}\|^2.$$

Now the conclusions are standard. \square

4.4. Reduction to the Born-Oppenheimer approximation. In this section, we prove Theorem 1.4 by using the projections of the true eigenfunctions ($\Pi_0 \psi_n$) as test functions for the Born-Oppenheimer approximation. Let us consider an eigenpair (λ, ψ) of $\mathcal{L}_{\text{Tri}}(h)$ such that (3.9) holds. We let $\hat{\psi}(u, t) = \psi(x, y)$. Then, $(\lambda, \hat{\psi})$ satisfies:

$$-h^2 \left(\partial_u^2 - \frac{2t\partial_u\partial_t}{u + \pi\sqrt{2}} + \frac{2t\partial_t}{(u + \pi\sqrt{2})^2} + \frac{t^2\partial_t^2}{(u + \pi\sqrt{2})^2} \right) \hat{\psi} - \frac{1}{(u + \pi\sqrt{2})^2} \partial_t^2 \hat{\psi} = \lambda \hat{\psi}.$$

The main idea is to determine the (differential) equation satisfied by $\Pi_0 \hat{\psi}$. In other words we will compute and control the commutator between the operator and the projection Π_0 . For that purpose, a few lemmas will be necessary. The first one is an estimate established in the original coordinates (x, y) in the triangle Tri :

Lemma 4.8. *For all $k \in \mathbb{N}$, there exist $h_0 > 0$ and $C > 0$ such that we have, for $h \in (0, h_0)$:*

$$\int_{\text{Tri}} (x + \pi\sqrt{2})^{-k} |\partial_y \psi|^2 dx dy \leq C \|\psi\|^2.$$

Proof. The equation satisfied by ψ is:

$$(-h^2 \partial_x^2 - \partial_y^2) \psi = \lambda \psi.$$

Multiplying by $(x + \pi\sqrt{2})^{-k}$, taking the scalar product with ψ and integrating by parts we find:

$$\int_{\text{Tri}} (x + \pi\sqrt{2})^{-k} |\partial_y \psi|^2 dx dy \leq C \int_{\text{Tri}} (x + \pi\sqrt{2})^{-k} \left(|\psi|^2 + h^2 (x + \pi\sqrt{2})^{-1} |\psi| |\partial_x \psi| \right) dx dy.$$

Using the Agmon estimates of Proposition 4.6 with $\rho_0/h \geq k + 1$ we deduce the lemma. \square

We can now prove:

Lemma 4.9. *There exist $h_0 > 0$ and $C > 0$ such that we have, for $h \in (0, h_0)$:*

$$\left\| \left\langle (u + \pi\sqrt{2})^{-1} t \partial_u \partial_t \hat{\psi}, c_0(t) \right\rangle_t \right\|_{L^2(du)} \leq Ch^{-1} \|\hat{\psi}\|.$$

Proof. Integrating by parts in t for any fixed $u \in (-\pi\sqrt{2}, 0)$, we find:

$$\begin{aligned} \left| \left\langle (u + \pi\sqrt{2})^{-1} t \partial_u \partial_t \hat{\psi}, c_0(t) \right\rangle_t \right| &\leq C \int_{-1}^1 (u + \pi\sqrt{2})^{-1} |\partial_u \hat{\psi}| dt \\ &\leq C \left(\int_{-1}^1 (u + \pi\sqrt{2})^{-2} |\partial_u \hat{\psi}|^2 dt \right)^{1/2}. \end{aligned}$$

To have the lemma, it remains to prove that

$$\int_{\text{Rec}} (u + \pi\sqrt{2})^{-2} |\partial_u \hat{\psi}|^2 du dt \leq Ch^{-2} \int_{\text{Rec}} |\hat{\psi}|^2 du dt.$$

We have:

$$\int_{\text{Rec}} (u + \pi\sqrt{2})^{-2} |\partial_u \hat{\psi}|^2 du dt = \int_{\text{Tri}} (x + \pi\sqrt{2})^{-3} \left| \left(\partial_x + \frac{y \partial_y}{x + \pi\sqrt{2}} \right) \psi \right|^2 dx dy$$

and we apply Lemma 4.8 to control the term in ∂_y . We end the proof using the Agmon estimates of Proposition 4.6. \square

The same kind of computations yields:

Lemma 4.10. *There exist $h_0 > 0$ and $C > 0$ such that we have, for $h \in (0, h_0)$:*

$$\left\| \left\langle (u + \pi\sqrt{2})^{-2} t \partial_t \hat{\psi}, c_0(t) \right\rangle_t \right\|_{L^2(du)} \leq C \|\hat{\psi}\|.$$

Finally, we have:

Lemma 4.11. *There exist $h_0 > 0$ and $C > 0$ such that we have, for $h \in (0, h_0)$:*

$$\left\| \left\langle (u + \pi\sqrt{2})^{-2} t^2 \partial_t^2 \hat{\psi}, c_0(t) \right\rangle_t \right\|_{L^2(du)} \leq C \|\hat{\psi}\|.$$

From Lemmas 4.9, 4.10 and 4.11, and from Proposition 4.7, we infer:

Proposition 4.12. *Let $\Gamma_0 > 0$. There exist $h_0 > 0$ and $C > 0$ such that for $h \in (0, h_0)$ and all eigenpair (λ, ψ) of $\mathcal{L}_{\text{Tri}}(h)$ satisfying $|\lambda - \frac{1}{8}| \leq \Gamma_0 h^{2/3}$, we have:*

$$\left\| \left(-h^2 \partial_u^2 + \frac{\pi^2}{4(u + \pi\sqrt{2})^2} - \lambda \right) \Pi_0 \hat{\psi} \right\| \leq Ch \|\Pi_0 \hat{\psi}\|.$$

- *Proof of Theorem 1.4.* We deduce, from Proposition 4.12, for all $n \in \{1, \dots, N_0\}$:

$$\left\| \left(-h^2 \partial_u^2 + \frac{\pi^2}{4(u + \pi\sqrt{2})^2} \right) \Pi_0 \hat{\psi}_n \right\| \leq (\lambda_{\text{Tri}, N_0}(h) + Ch) \|\Pi_0 \hat{\psi}_n\|.$$

From this inequality, we infer, for all $\psi \in \mathfrak{E}_{N_0}(h)$:

$$\left\| \left(-h^2 \partial_u^2 + \frac{\pi^2}{4(u + \pi\sqrt{2})^2} \right) \Pi_0 \hat{\psi} \right\| \leq (\lambda_{\text{Tri}, N_0}(h) + Ch) \|\Pi_0 \hat{\psi}\|$$

and thus:

$$Q_{\text{BO}, \text{Tri}, h}(\Pi_0 \hat{\psi}) \leq (\lambda_{\text{Tri}, N_0}(h) + Ch) \|\Pi_0 \hat{\psi}\|.$$

It remains to apply the min-max principle to the N_0 dimensional space $\Pi_0 \mathfrak{E}_{N_0}(h)$ (see Proposition 4.7) and Theorem 3.1 to get the separation of eigenvalues. Then, the conclusion follows from Proposition 4.1.

5. APPLICATION TO THE WAVEGUIDE

In this section, we prove Theorem 1.6. Firstly, we construct quasimodes and secondly we use Agmon estimates reduce to the triangle case. On the left, $\mathcal{L}_{\text{Gui}}(h)$ writes, in the coordinates (u, t) defined in (4.1):

$$(5.1) \quad \mathcal{L}_{\text{Gui}}^{\text{lef}}(h) = -h^2 \left(\partial_u - \frac{t}{u + \pi\sqrt{2}} \partial_t \right)^2 - \frac{1}{(u + \pi\sqrt{2})^2} \partial_t^2$$

and on the right, we let:

$$(5.2) \quad u = x, \quad \tau = \frac{y - x}{\pi\sqrt{2}}$$

and the operator writes:

$$(5.3) \quad \mathcal{L}_{\text{Gui}}^{\text{rig}}(h) = -h^2 \left(\partial_u - \frac{1}{\pi\sqrt{2}} \partial_\tau \right)^2 - \frac{1}{2\pi^2} \partial_\tau^2.$$

The integration domain is $(-\pi\sqrt{2}, +\infty) \times (0, 1) = \Omega_{\text{lef}} \cup \Omega_{\text{rig}}$ where:

$$\Omega_{\text{lef}} = (-\pi\sqrt{2}, 0) \times (0, 1) \text{ and } \Omega_{\text{rig}} = (0, +\infty) \times (0, 1).$$

The boundary conditions are Dirichlet on $(0, \infty) \times \{0\} \cup (-\pi\sqrt{2}, \infty) \times \{1\}$ and Neumann on $(-\pi\sqrt{2}, 0) \times \{0\}$.

5.1. Quasimodes. The aim of this subsection is to prove the following proposition:

Proposition 5.1. *For any $n \geq 1$, there exists a sequence $(\gamma_{j,n})$ such that, for all $N_0 \in \mathbb{N}$ and $J \in \mathbb{N}$, there exists $h_0 > 0$ and $C > 0$ such that for $h \in (0, h_0)$:*

$$(5.4) \quad \text{dist} \left(\mathfrak{S}_{\text{dis}}(\mathcal{L}_{\text{Gui}}(h)), \sum_{j=0}^J \gamma_{j,n} h^{j/3} \right) \leq Ch^{(J+1)/3}, \quad n = 1, \dots, N_0.$$

Moreover, we have: $\gamma_{0,n} = \frac{1}{8}$, $\gamma_{1,n} = 0$ and $\gamma_{2,n} = (4\pi\sqrt{2})^{-2/3} z_A(n)$.

5.1.1. Preliminaries.

• *Ansatz, boundary and transmission conditions.* In order to construct quasimodes for $\mathcal{L}_{\text{Gui}}(h)$ of the form (γ_h, ψ_h) , we use the coordinates (u, t) on the left and (u, τ) on the right and look for quasimodes $\hat{\psi}_h(u, t, \tau) = \psi_h(x, y)$. Such quasimodes will have the form on the left:

$$(5.5) \quad \psi_{\text{lef}}(u, t) \sim \sum_{j \geq 0} h^{j/3} (\Psi_{\text{lef},j}(h^{-2/3}u, t) + \Phi_{\text{lef},j}(h^{-1}u, t)),$$

and on the right:

$$(5.6) \quad \psi_{\text{rig}}(u, \tau) \sim \sum_{j \geq 0} h^{j/3} \Phi_{\text{rig},j}(h^{-1}u, \tau)$$

associated with quasi-eigenvalues:

$$\gamma_h \sim \sum_{j \geq 0} \gamma_j h^{j/3}.$$

We will denote $s = h^{-2/3}u$ and $\sigma = h^{-1}u$. Since ψ_h has no jump across the line $x = 0$, we find that ψ_{lef} and ψ_{rig} should satisfy two transmission conditions on the line $u = 0$:

$$\psi_{\text{lef}}(0, t) = \psi_{\text{rig}}(0, t) \quad \text{and} \quad \left(\partial_u - \frac{t}{\pi\sqrt{2}} \partial_t \right) \psi_{\text{lef}}(0, t) = \left(\partial_u - \frac{\partial_\tau}{\pi\sqrt{2}} \right) \psi_{\text{rig}}(0, t),$$

for all $t \in (0, 1)$. For the Ansätze (5.5)-(5.6) these conditions write for all $j \geq 0$

$$(5.7) \quad \Psi_{\text{lef},j}(0, t) + \Phi_{\text{lef},j}(0, t) = \Phi_{\text{rig},j}(0, t)$$

$$(5.8) \quad \partial_\sigma \Phi_{\text{lef},j}(0, t) + \partial_s \Psi_{\text{lef},j-1}(0, t) - \frac{t\partial_t}{\pi\sqrt{2}} \Phi_{\text{lef},j-3}(0, t) - \frac{t\partial_t}{\pi\sqrt{2}} \Psi_{\text{lef},j-3}(0, t) \\ = \partial_\sigma \Phi_{\text{rig},j}(0, t) - \frac{\partial_\tau}{\pi\sqrt{2}} \Phi_{\text{rig},j-3}(0, t),$$

where we understand that the terms associated with a negative index are 0.

Notation 5.2. We still set $s = h^{-2/3}u$ and $\sigma = h^{-1}u$. Like in the case of the triangle Tri , the operators $\mathcal{L}_{\text{Gui}}^{\text{lef}}$ and $\mathcal{L}_{\text{Gui}}^{\text{rig}}$, cf. (5.1)-(5.3), written in variables (s, t) and (σ, t) expand in powers of $h^{2/3}$ and h , respectively. Now we have three operator series:

- $\mathcal{L}_{\text{Gui}}^{\text{lef}}(h)(h^{2/3}s, t; h^{-2/3}\partial_s, \partial_t) \sim \sum_{j \geq 0} \mathcal{L}_{2j} h^{2j/3}$. The operators are the same as for Tri , but they are defined now on the half-strip $\text{Hlef} := (-\infty, 0) \times (0, 1)$.
- $\mathcal{L}_{\text{Gui}}^{\text{lef}}(h)(h\sigma, t; h^{-1}\partial_\sigma, \partial_t) \sim \sum_{j \geq 0} \mathcal{N}_{3j}^{\text{lef}} h^j$ defined on Hlef .
- $\mathcal{L}_{\text{Gui}}^{\text{rig}}(h)(h\sigma, \tau; h^{-1}\partial_\sigma, \partial_\tau) \sim \sum_{j \geq 0} \mathcal{N}_{3j}^{\text{rig}} h^j$ defined on $\text{Hrig} := (0, \infty) \times (0, 1)$.

We agree to incorporate the boundary conditions on the horizontal sides of Hlef in the definition of the operators \mathcal{L}_j , $\mathcal{N}_j^{\text{lef}}$, and $\mathcal{N}_j^{\text{rig}}$:

- Neumann-Dirichlet $\partial_t \Psi(s, 0) = 0$ and $\Psi(s, 1) = 0$ ($s < 0$) for \mathcal{L}_j ,
- Neumann-Dirichlet $\partial_t \Phi(\sigma, 0) = 0$ and $\Psi(\sigma, 1) = 0$ ($\sigma < 0$) for $\mathcal{N}_j^{\text{lef}}$,
- Pure Dirichlet $\Phi(\sigma, 0) = 0$ and $\Psi(\sigma, 1) = 0$ ($\sigma > 0$) for $\mathcal{N}_j^{\text{rig}}$.

Note that

$$(5.9) \quad \mathcal{N}_0^{\text{lef}} = \partial_\sigma^2 - \frac{1}{2\pi^2} \partial_t^2 \quad \text{and} \quad \mathcal{N}_0^{\text{rig}} = \partial_\sigma^2 - \frac{1}{2\pi^2} \partial_\tau^2.$$

• *Dirichlet-to-Neumann operators.* Here we introduce the Dirichlet-to-Neumann operators T^{rig} and T^{lef} which we use to solve the problems in the variables (σ, t) . We denote by I the interface $\{0\} \times (0, 1)$ between Hrig and Hlef .

On the right, and with Notation 5.2, we consider the problem:

$$\left(\mathcal{N}_0^{\text{rig}} - \frac{1}{8} \right) \Phi_{\text{rig}} = 0 \quad \text{in} \quad \text{Hrig} \quad \text{and} \quad \Phi_{\text{rig}}(0, t) = G(t)$$

where $G \in H_{00}^{1/2}(I)$. Since the first eigenvalue of the transverse part of $\mathcal{N}_0^{\text{rig}} - \frac{1}{8}$ is positive, this problem has a unique exponentially decreasing solution Φ_{rig} . Its exterior normal derivative $-\partial_\sigma \Phi_{\text{rig}}$ on the line I is well defined in $H^{-1/2}(I)$. We define:

$$T^{\text{rig}}G = \partial_n \Phi_{\text{rig}} = -\partial_\sigma \Phi_{\text{rig}}.$$

We have:

$$\langle T^{\text{rig}}G, G \rangle = Q_{\text{rig}}(\Phi_{\text{rig}}) \geq C \|G\|_{H_{00}^{1/2}(I)}^2.$$

On the left, we consider the problem:

$$\left(\mathcal{N}_0^{\text{lef}} - \frac{1}{8} \right) \Phi_{\text{lef}} = 0 \quad \text{in} \quad \text{Hlef} \quad \text{and} \quad \Phi_{\text{lef}}(0, t) = G(t)$$

where $G \in H_{00}^{1/2}(I)$.

For all $G \in H_{00}^{1/2}(I)$ such that $\Pi_0 G = 0$, this problem has a unique exponentially decreasing solution Φ_{lef} . Its exterior normal derivative $\partial_\sigma \Phi_{\text{lef}}$ on the line I is well defined in $H^{-1/2}(I)$. We define:

$$T^{\text{lef}}G = \partial_n \Phi_{\text{lef}} = \partial_\sigma \Phi_{\text{lef}}.$$

We have:

$$\langle T^{\text{lef}}G, G \rangle = Q_{\text{lef}}(\Phi_{\text{lef}}) \geq 0.$$

Proposition 5.3. *The operator $T^{\text{rig}} + T^{\text{lef}}\Pi_1$ is coercive on $H_{00}^{1/2}(I)$ with $\Pi_1 = \text{Id} - \Pi_0$. In particular, it is invertible from $H_{00}^{1/2}(I)$ onto $H^{-1/2}(I)$.*

This proposition allows to prove the following lemma which is in the same spirit as Lemma 4.2, but now for transmission problems on $\text{Hlef} \cup \text{Hrig}$ (we recall that $c_0(t) = \cos(\frac{\pi}{2}t)$):

Lemma 5.4. *Let $F_{\text{lef}} = F_{\text{lef}}(\sigma, t)$ and $F_{\text{rig}} = F_{\text{rig}}(\sigma, \tau)$ be real functions defined on Hlef and Hrig , respectively, with exponential decay with respect to σ . Let $G^0 \in H_{00}^{1/2}(I)$ and $H \in H^{-1/2}(I)$ be data on the interface $I = \partial\text{Hlef} \cap \partial\text{Hrig}$. Then there exists a unique coefficient $\zeta \in \mathbb{R}$ and a unique trace $G \in H_{00}^{1/2}(I)$ such that the transmission problem*

$$\begin{cases} \left(\mathcal{N}_0^{\text{lef}} - \frac{1}{8} \right) \Phi_{\text{lef}} = F_{\text{lef}} & \text{in} \quad \text{Hlef}, & \Phi_{\text{lef}}(0, t) = G(t) + G^0(t) + \zeta c_0(t), \\ \left(\mathcal{N}_0^{\text{rig}} - \frac{1}{8} \right) \Phi_{\text{rig}} = F_{\text{rig}} & \text{in} \quad \text{Hrig}, & \Phi_{\text{rig}}(0, t) = G(t), \\ \partial_\sigma \Phi_{\text{lef}}(0, t) - \partial_\sigma \Phi_{\text{rig}}(0, t) = H(t) & \text{on} \quad I, \end{cases}$$

admits a (unique) solution $(\Phi_{\text{lef}}, \Phi_{\text{rig}})$ with exponential decay.

Proof. Let $(\Phi_{\text{lef}}^0, \zeta_0)$ be the solution provided by Lemma 4.2 for the data $F = F_{\text{lef}}$ and $G = 0$. Let Φ_{rig}^0 be the unique exponentially decreasing solution of the problem

$$\left(\mathcal{N}_0^{\text{rig}} - \frac{1}{8}\right)\Phi_{\text{rig}}^0 = F_{\text{rig}} \quad \text{in } \text{Hrig}, \quad \Phi_{\text{rig}}^0(0, t) = 0.$$

Let H^0 be the jump $\partial_\sigma \Phi_{\text{rig}}^0(0, t) - \partial_\sigma \Phi_{\text{lef}}^0(0, t)$. If we define the new unknowns $\Phi_{\text{rig}}^1 = \Phi_{\text{rig}} - \Phi_{\text{rig}}^0$ and $\Phi_{\text{lef}}^1 = \Phi_{\text{lef}} - \Phi_{\text{lef}}^0$, the problem we want to solve becomes

$$\begin{aligned} \left(\mathcal{N}_0^{\text{lef}} - \frac{1}{8}\right)\Phi_{\text{lef}}^1 &= 0 \quad \text{in } \text{Hlef}, & \Phi_{\text{lef}}^1(0, t) &= G(t) + (\zeta - \zeta_0)c_0(t), \\ \left(\mathcal{N}_0^{\text{rig}} - \frac{1}{8}\right)\Phi_{\text{rig}}^1 &= 0 \quad \text{in } \text{Hrig}, & \Phi_{\text{rig}}^1(0, t) &= G(t), \\ \partial_\sigma \Phi_{\text{rig}}^1(0, t) - \partial_\sigma \Phi_{\text{lef}}^1(0, t) &= H(t) - H^0(t) \quad \text{on } I. \end{aligned}$$

Using Proposition 5.3 we can set $G = (T^{\text{rig}} + T^{\text{lef}}\Pi_1)^{-1}(H - H_0)$, which ensures the solvability of the above problem. \square

5.1.2. Construction of quasimodes.

• *Terms of order h^0 .* Let us write the ‘‘interior’’ equations:

$$\begin{aligned} \text{lef}_s : & \quad \mathcal{L}_0 \Psi_{\text{lef},0} = \gamma_0 \Psi_{\text{lef},0} \\ \text{lef}_\sigma : & \quad \mathcal{N}_0^{\text{lef}} \Phi_{\text{lef},0} = \gamma_0 \Phi_{\text{lef},0} \\ \text{rig} : & \quad \mathcal{N}_0^{\text{rig}} \Phi_{\text{rig},0} = \gamma_0 \Phi_{\text{rig},0}. \end{aligned}$$

The boundary conditions are:

$$\begin{aligned} \Psi_{\text{lef},0}(0, t) + \Phi_{\text{lef},0}(0, t) &= \Phi_{\text{rig},0}(0, t), \\ \partial_\sigma \Phi_{\text{lef},0}(0, t) &= \partial_\sigma \Phi_{\text{rig},0}(0, t). \end{aligned}$$

We get:

$$\gamma_0 = \frac{1}{8}, \quad \Psi_{\text{lef},0} = g_0(s)c_0(t).$$

We now apply Lemma 5.4 with $F_{\text{lef}} = 0$, $F_{\text{rig}} = 0$, $G_0 = 0$, $H = 0$ to get

$$G = 0 \quad \text{and} \quad \zeta = 0.$$

We deduce: $\Phi_{\text{lef},0} = 0$, $\Phi_{\text{rig},0} = 0$ and, since $\zeta = -g_0(0)$, $g_0(0) = 0$. At this step, we do not have determined g_0 yet.

• *Terms of order $h^{1/3}$.* The interior equations read:

$$\begin{aligned} \text{lef}_s : & \quad \mathcal{L}_0 \Psi_{\text{lef},1} = \gamma_0 \Psi_{\text{lef},1} + \gamma_1 \Psi_{\text{lef},0} \\ \text{lef}_\sigma : & \quad \mathcal{N}_0^{\text{lef}} \Phi_{\text{lef},1} = \gamma_0 \Phi_{\text{lef},1} + \gamma_1 \Phi_{\text{lef},0} \\ \text{rig} : & \quad \mathcal{N}_0^{\text{rig}} \Phi_{\text{rig},1} = \gamma_0 \Phi_{\text{rig},1} + \gamma_1 \Phi_{\text{rig},0}. \end{aligned}$$

Using Lemma 4.3, the first equation implies:

$$\gamma_1 = 0, \quad \Psi_{\text{lef},1}(s, t) = g_1(s)c_0(t).$$

The boundary conditions are:

$$\begin{aligned} g_1(0)c_0(t) + \Phi_{\text{lef},1}(0, t) &= \Phi_{\text{rig},1}(0, t), \\ g'_0(0)c_0(t) + \partial_\sigma \Phi_{\text{lef},1}(0, t) &= \partial_\sigma \Phi_{\text{rig},1}(0, t). \end{aligned}$$

The system becomes:

$$\begin{aligned} \text{lef}_\sigma : \quad & \left(\mathcal{N}_0^{\text{lef}} - \frac{1}{8} \right) \Phi_{\text{lef},1} = 0, \\ \text{rig} : \quad & \left(\mathcal{N}_0^{\text{rig}} - \frac{1}{8} \right) \Phi_{\text{rig},1} = 0. \end{aligned}$$

We apply Lemma 5.4 with $F_{\text{lef}} = 0$, $F_{\text{rig}} = 0$, $G_0 = 0$, $H = -g'_0(0)c_0(t)$ to get:

$$G = -g'_0(0)(T^{\text{rig}} + T^{\text{lef}}\Pi_1)^{-1}c_0.$$

Since $G = \Phi_{\text{rig},1}$ and $\zeta = -g_1(0)$, this determines $\Phi_{\text{lef},1}$, $\Phi_{\text{rig},1}$ and $g_1(0)$.

• *Terms of order $h^{2/3}$.* The interior equations write:

$$\begin{aligned} \text{lef}_s : \quad & \mathcal{L}_2 \Psi_{\text{lef},0} + \mathcal{L}_0 \Psi_{\text{lef},2} = \sum_{l+k=2} \gamma_l \Psi_{\text{lef},k} \\ \text{lef}_\sigma : \quad & \mathcal{N}_0^{\text{lef}} \Phi_{\text{lef},2} = \sum_{l+k=2} \gamma_l \Phi_{\text{lef},k} \\ \text{rig} : \quad & \mathcal{N}_0^{\text{rig}} \Phi_{\text{rig},2} = \frac{1}{8} \Phi_{\text{rig},2}, \end{aligned}$$

with

$$\mathcal{L}_2 \Psi_{\text{lef},0} = -g''_0(s)c_0(t) + \frac{1}{\pi^3 \sqrt{2}} s g_0(s) \partial_t^2(c_0).$$

Lemma 4.3 and then Lemma 4.4 imply:

$$(5.10) \quad -g''_0 - \frac{1}{4\pi\sqrt{2}} s g_0 = \gamma_2 g_0.$$

Thus, γ_2 is one of the eigenvalues of the Airy operator and g_0 an associated eigenfunction. In particular, this determines the unknown functions of the previous steps. We are led to take:

$$\Psi_{\text{lef},2}(s, t) = \Psi_{\text{lef},2}^\perp + g_2(s)c_0(t), \quad \text{with } \Psi_{\text{lef},2}^\perp = 0$$

and to the system:

$$\begin{aligned} \text{lef}_\sigma : \quad & \left(\mathcal{N}_0^{\text{lef}} - \frac{1}{8} \right) \Phi_{\text{lef},2} = 0 \\ \text{rig} : \quad & \left(\mathcal{N}_0^{\text{rig}} - \frac{1}{8} \right) \Phi_{\text{rig},2} = 0. \end{aligned}$$

Using Lemma 5.4, we find

$$G = -g'_1(0)(T^{\text{rig}} + T^{\text{lef}}\Pi_1)^{-1}c_0.$$

This determines $\Phi_{\text{rig},2}$, $\Phi_{\text{lef},2}$ and $g_2(0)$. The function g_1 is still unknown at this step.

• *Further terms.* Let us assume that we can write $\Psi_{\text{lef},k} = \Psi_{\text{lef},k}^\perp + g_k(s)c_0(t)$ for $0 \leq k \leq j$ and that $(g_k)_{0 \leq k \leq j-2}$ and $(\Psi_{\text{lef},k}^\perp)_{0 \leq k \leq j}$ are determined. Let us also assume that $g_{j-1}(0)$, $(\gamma_k)_{0 \leq k \leq j}$, $(\Phi_{\text{rig},k})_{0 \leq k \leq j-1}$, $(\Phi_{\text{lef},k})_{0 \leq k \leq j-1}$ are already known. Finally, we assume that $g_j(0)$, $\Phi_{\text{lef},j}$, $\Phi_{\text{rig},j}$ are known once g_{j-1} is determined and that all the functions have an exponential decay.

Let us collect the terms of order $h^{(j+1)/3}$. The interior equations write:

$$\begin{aligned} \text{lef}_s : \quad & \sum_{k=0}^{j+1} \mathcal{L}_k \Psi_{\text{lef},j+1-k} = \sum_{k=0}^{j+1} \gamma_k \Psi_{\text{lef},j+1-k} \\ \text{lef}_\sigma : \quad & \sum_{k=0}^{j+1} \mathcal{N}_k^{\text{lef}} \Phi_{\text{lef},j+1-k} = \sum_{k=0}^{j+1} \gamma_k \Phi_{\text{lef},j+1-k} \\ \text{rig} : \quad & \sum_{k=0}^{j+1} \mathcal{N}_k^{\text{rig}} \Phi_{\text{rig},j+1-k} = \sum_{k=0}^{j+1} \gamma_k \Phi_{\text{rig},j+1-k}, \end{aligned}$$

We examine the first equation and notice that $\mathcal{L}_1 = 0$ and $\gamma_1 = 0$ so that $\Psi_{\text{lef},j}$ does not appear. We can write this equation in the form:

$$\begin{aligned} \left(\mathcal{L}_0 - \frac{1}{8} \right) \Psi_{\text{lef},j+1} = & -\mathcal{L}_2 \Psi_{\text{lef},j-1} - \gamma_2 \Psi_{\text{lef},j-1} - \gamma_{j+1} \Psi_{\text{lef},0} \\ & - \sum_{k=4}^{j+1} \mathcal{L}_k \Psi_{\text{lef},j+1-k} - \sum_{k=3}^j \gamma_k \Psi_{\text{lef},j+1-k}. \end{aligned}$$

We apply Lemma 4.3 and we obtain an equation in the form:

$$-g_{j-1}'' - \frac{1}{4\pi\sqrt{2}} s g_{j-1} - \gamma_2 g_{j-1} = f + \gamma_{j+1} g_0,$$

where f and $g_{j-1}(0)$ are known. Then, Lemma 4.4 applies and provides a unique value of γ_{j+1} such that g_{j-1} has an exponential decay. From the recursion assumption, we deduce that $g_j(0)$, $\Phi_{\text{lef},j}$, $\Phi_{\text{rig},j}$ are now determined. Lemma 4.3 uniquely determines $\Psi_{\text{lef},j+1}^\perp$ such that:

$$\Psi_{\text{lef},j+1} = \Psi_{\text{lef},j+1}^\perp + g_{j+1}(s)c_0(t).$$

We can now write the system in the form:

$$\begin{aligned} \text{lef}_\sigma : \quad & \left(\mathcal{N}_0^{\text{lef}} - \frac{1}{8} \right) \Phi_{\text{lef},j+1} = F_{\text{lef}} \\ \text{rig} : \quad & \left(\mathcal{N}_0^{\text{rig}} - \frac{1}{8} \right) \Phi_{\text{rig},j+1} = F_{\text{rig}}, \end{aligned}$$

where $F_{\text{lef}}, F_{\text{rig}}$ have an exponential decay. The transmission conditions are, cf. (5.7)–(5.8):

$$\begin{aligned} \Phi_{\text{lef},j+1}(0, t) &= \Phi_{\text{rig},j+1}(0, t) - \Psi_{\text{lef},j+1}(0, t) \\ &= \Phi_{\text{rig},j+1}(0, t) - \Psi_{\text{lef},j+1}^\perp(0, t) - g_{j+1}(0)c_0(t) \end{aligned}$$

and

$$\partial_\sigma \Phi_{\text{lef},j+1}(0, t) - \partial_\sigma \Phi_{\text{rig},j+1}(0, t) = H(t) = -g'_j(0)c_0(t) + \tilde{H}(t),$$

where \tilde{H} is known. We can apply Lemma 5.4 which determines $\Phi_{\text{rig},j+1}$, $\Phi_{\text{lef},j+1}$ (with an exponential decay) and $g_{j+1}(0)$ once g_j is known.

- *Quasimodes.* The previous construction leads to introduce:

$$(5.11a) \quad \hat{\psi}_h^{[J]}(u, t) = \begin{cases} \sum_{j=0}^{J+2} \left(\Psi_{\text{lef},j} \left(\frac{u}{h^{2/3}}, t \right) + \Phi_{\text{lef},j} \left(\frac{u}{h}, t \right) \right) h^{j/3} & \text{when } u \leq 0 \\ \sum_{j=0}^{J+2} \Phi_{\text{rig},j} \left(\frac{u}{h}, \tau \right) h^{j/3} + u \chi^{\text{rig}} \left(\frac{u}{h} \right) R_{J,h}(\tau) & \text{when } u \geq 0, \end{cases}$$

where the correction term

$$(5.11b) \quad R_{J,h}(\tau) = \partial_s \Psi_{\text{lef},J+2}(0, \tau) h^{J/3} - \sum_{j=J}^{J+2} \left(\frac{t \partial_t}{\pi \sqrt{2}} \left(\Psi_{\text{lef},j}(0, \tau) + \Phi_{\text{lef},j}(0, \tau) \right) \right) h^{j/3} + \sum_{j=J}^{J+2} \frac{\partial_\tau}{\pi \sqrt{2}} \Phi_{\text{rig},j}(0, \tau) h^{j/3}$$

is added to make $\hat{\psi}_h^{[J]}$ satisfy the transmission condition (5.8). Here we have used a smooth cutoff function χ^{rig} being 1 near 0. By construction, $\psi_h^{[J]}$ defined by the identity

$$(5.11c) \quad \psi_h^{[J]}(x, y) = \chi^{\text{lef}}(u) \hat{\psi}_h^{[J]}(u, t)$$

belongs to the domain of $\mathcal{L}_{\text{Gui}}(h)$. Using the exponential decays, for all $J \in \mathbb{N}$ we get the existence of $h_0 > 0$, $C(J, h_0) > 0$ such that for $h \in (0, h_0)$:

$$\left\| \left(\mathcal{L}_{\text{Gui}}(h) - \sum_{j=0}^{J+2} \gamma_j h^{j/3} \right) \psi_h^{[J]} \right\| \leq C(J, h_0) h^{1+J/3}.$$

5.2. Agmon estimates and consequences. In this last subsection, we prove Theorem 1.6. For that purpose, we first state Agmon estimates to show that the first eigenfunctions are essentially living in the triangle Tri so that we can compare the problem in the whole guide with the triangle.

Proposition 5.5. *Let (λ, ψ) be an eigenpair of $\mathcal{L}_{\text{Gui}}(h)$ such that $|\lambda - \frac{1}{8}| \leq Ch^{2/3}$. There exist $\alpha > 0$, $h_0 > 0$ and $C > 0$ such that for all $h \in (0, h_0)$, we have:*

$$\int_{x \geq 0} e^{\alpha h^{-1} x} \left(|\psi|^2 + |h \partial_x \psi|^2 \right) dx dy \leq C \|\psi\|^2.$$

Proof. The proof is left to the reader, the main ingredients being the IMS formula and the fact that $\mathcal{H}_{\text{BO,Gui}}$ is a lower bound of $\mathcal{L}_{\text{Gui}}(h)$ in the sense of quadratic forms (see the analysis of Propositions 3.3 and 3.4). See also [10, Proposition 6.1] for a more direct method. \square

- *Proof of Theorem 1.6.* Let ψ_n^h be an eigenfunction associated with $\lambda_{\text{Gui},n}(h)$ and assume that the ψ_n^h are orthogonal in $L^2(\Omega)$, and thus for the bilinear form $B_{\text{Gui},h}$ associated with the operator $\mathcal{L}_{\text{Gui}}(h)$.

We choose $\varepsilon \in (0, \frac{1}{3})$ and introduce a smooth cutoff χ^h at the scale $h^{1-\varepsilon}$ for positive x

$$\chi^h(x) = \chi(xh^{\varepsilon-1}) \quad \text{with} \quad \chi \equiv 1 \text{ if } x \leq \frac{1}{2}, \quad \chi \equiv 0 \text{ if } x \geq 1$$

and we consider the functions $\chi^h \psi_n^h$. We denote:

$$\mathfrak{E}_{N_0}(h) = \text{span}(\chi^h \psi_1^h, \dots, \chi^h \psi_{N_0}^h).$$

We have:

$$Q_{\text{Gui},h}(\psi_n^h) = \lambda_{\text{Gui},n}(h) \|\psi_n^h\|^2$$

and deduce by the Agmon estimates of Proposition 5.5:

$$Q_{\text{Gui},h}(\chi^h \psi_n^h) = (\lambda_{\text{Gui},n}(h) + \mathcal{O}(h^\infty)) \|\chi^h \psi_n^h\|^2.$$

In the same way, we get the "almost"-orthogonality, for $n \neq m$:

$$B_{\text{Gui},h}(\chi^h \psi_n^h, \chi^h \psi_m^h) = \mathcal{O}(h^\infty).$$

We deduce, for all $v \in \mathfrak{E}_{N_0}(h)$:

$$Q_{\text{Gui},h}(v) \leq (\lambda_{\text{Gui},N_0}(h) + \mathcal{O}(h^\infty)) \|v\|^2.$$

We can extend the elements of $\mathfrak{E}_{N_0}(h)$ by zero so that $Q_{\text{Gui},h}(v) = Q_{\text{Tri}_{\varepsilon,h}}(v)$ for $v \in \mathfrak{E}_{N_0}(h)$ where $\text{Tri}_{\varepsilon,h}$ is the triangle with vertices $(-\pi\sqrt{2}, 0)$, $(h^{1-\varepsilon}, 0)$ and $(h^{1-\varepsilon}, h^{1-\varepsilon} + \pi\sqrt{2})$. A dilation reduces us to:

$$\left(1 + \frac{h^{1-\varepsilon}}{\pi\sqrt{2}}\right)^{-2} (-h^2 \partial_x^2 - \partial_y^2)$$

on the triangle Tri . The lowest eigenvalues of this new operator admits the lower bounds $\frac{1}{8} + z_A(n)h^{2/3} - Ch^{1-\varepsilon}$; in particular, we deduce:

$$\lambda_{\text{Gui},N_0}(h) \geq \frac{1}{8} + z_A(N_0)h^{2/3} - Ch^{1-\varepsilon}.$$

This provides the separation of the eigenvalues and, joint with Proposition 5.1, this implies Theorem 1.6.

5.3. Conclusion.

5.3.1. Back to the physical coordinates. The two-term asymptotics

$$\Psi_0^{\text{lef}}(s, t) \mathbb{1}_{s < 0} + h^{1/3} \left(\Phi_1^{\text{lef}}(\sigma, t) \mathbb{1}_{\sigma < 0} + \Phi_1^{\text{rig}}(\sigma, \tau) \mathbb{1}_{\sigma > 0} \right)$$

provides us with the leading behavior of the eigenvectors in the scaled half-guide Ω . It is interesting to come back to the physical domain and to interpret this two-term asymptotics in the original variables (x_1, x_2) . We have to chain formulas (1.5) giving (x, y) , (4.1) giving (u, t) , (5.2) giving (u, τ) , and (4.5) giving s and σ . We have also to take the relation $h = \tan \theta$ into account.

Returning to section 5.1.2 and more particularly to (5.10) — and Lemma 4.4, we find that

$$\Psi_0^{\text{lef}}(s, t) = \mathbf{A} \left((4\pi\sqrt{2})^{-1/3} s + z_A(n) \right) \cos \left(\frac{\pi t}{2} \right).$$

Coming back to physical variables (x_1, x_2) we find that

$$\Psi_0^{\text{lef}}(s, t) = \mathbf{A} \left(\left(\frac{\theta}{2\pi} \right)^{1/3} x_1 + z_A(n) \right) \cos \left(\frac{x_2}{2} - \frac{\theta x_1}{2\pi} \right) + \mathcal{O}(\theta^2) \quad \text{as } \theta \rightarrow 0.$$

As for the term $\Phi_1 := \Phi_1^{\text{lef}} \mathbb{1}_{\sigma < 0} + \Phi_1^{\text{rig}} \mathbb{1}_{\sigma > 0}$, we find that there exists a profile $\check{\Phi}_1$ independent of θ such that

$$\Phi_1(\sigma, t \mathbb{1}_{\sigma < 0} + \tau \mathbb{1}_{\sigma > 0}) = \check{\Phi}_1(\check{x}_1, \check{x}_2) + \mathcal{O}(\theta^2) \quad \text{as } \theta \rightarrow 0.$$

Here $\check{x}_1 = x_1$ and

$$\check{x}_2 = \begin{cases} \frac{\pi x_2 \cos \theta}{\pi + x_1 \sin \theta} & \text{if } x_1 < 0, \\ x_2 \cos \theta - x_1 \sin \theta & \text{if } x_1 > 0. \end{cases}$$

This profile $\check{\Phi}_1$ is exponentially decreasing as $\check{x}_1 \rightarrow \pm\infty$. It is solution of a transmission problem with smooth data for the Laplace operator on the infinite strip $\mathbb{R} \times (0, \pi)$ with mixed Neumann-Dirichlet conditions on the bottom side $\check{x}_2 = 0$, and Dirichlet on $\check{x}_2 = \pi$. Hence, it is piecewise H^2 modulo the addition of a multiple of the singular function ψ_{sing}^0 , cf. (1.2).

The consequence of this is that the coefficient of the singularity $\psi_{\text{sing}}^\theta$ for a normalized eigenvector of $\Delta_{\Omega_\theta}^{\text{Dir}}$ behaves as $\mathcal{O}(\theta^{1/3})$ as $\theta \rightarrow 0$.

5.3.2. X-shaped waveguides. Our results provide without any difficulty the structure of the eigenpairs of lowest energy in the small angle limit when the domain is formed by the union of two infinite strips of same width π crossing with an angle 2θ . The two non-convex corners of this structure are at the distance $\frac{\pi}{\sin \theta} = \mathcal{O}(\theta^{-1})$. This X-structure can be viewed as a double symmetric V-structure and the eigenmodes can be constructed from the V-structure eigenmodes since they interact very weakly (their lower scale is $\theta^{1/3}$). Nevertheless they do interact by an exponentially small tunnelling effect which would be interesting to investigate.

• *Acknowledgments.* The authors would like to thank Francis Nier for giving them the impulse to write this paper.

REFERENCES

- [1] S. AGMON. *Lectures on exponential decay of solutions of second-order elliptic equations: bounds on eigenfunctions of N-body Schrödinger operators*, volume 29 of *Mathematical Notes*. Princeton University Press, Princeton, NJ 1982.
- [2] S. AGMON. Bounds on exponential decay of eigenfunctions of Schrödinger operators. In *Schrödinger operators (Como, 1984)*, volume 1159 of *Lecture Notes in Math.*, pages 1–38. Springer, Berlin 1985.
- [3] Y. AVISHAI, D. BESSIS, B. G. GIRAUD, G. MANTICA. Quantum bound states in open geometries. *Phys. Rev. B* **44**(15) (Oct 1991) 8028–8034.
- [4] V. BONNAILLIE, M. DAUGE, N. POPOFF, N. RAYMOND. Discrete spectrum of a model schrödinger operator on the half-plane with neumann conditions. *To appear in ZAMP* (2011).
- [5] D. BORISOV, P. FREITAS. Asymptotics of Dirichlet eigenvalues and eigenfunctions of the Laplacian on thin domains in \mathbb{R}^d . *J. Funct. Anal.* **258** (2010) 893–912.
- [6] J. P. CARINI, J. T. LONDERGAN, K. MULLEN, D. P. MURDOCK. Multiple bound states in sharply bent waveguides. *Phys. Rev. B* **48**(7) (Aug 1993) 4503–4515.
- [7] G. CARRON, P. EXNER, D. KREJČIŘÍK. Topologically nontrivial quantum layers. *J. Math. Phys.* **45**(2) (2004) 774–784.

- [8] B. CHENAUD, P. DUCLOS, P. FREITAS, D. KREJČIŘÍK. Geometrically induced discrete spectrum in curved tubes. *Differential Geom. Appl.* **23**(2) (2005) 95–105.
- [9] M. DAUGE, I. GRUAIS. Asymptotics of arbitrary order for a thin elastic clamped plate. II. Analysis of the boundary layer terms. *Asymptot. Anal.* **16**(2) (1998) 99–124.
- [10] M. DAUGE, L. YVON, N. RAYMOND. Quantum waveguides with corners. In *Actes du Congrès SMAI 2011*, ESAIM Proc. EDP Sciences, Les Ulis 2012.
- [11] P. DUCLOS, P. EXNER. Curvature-induced bound states in quantum waveguides in two and three dimensions. *Rev. Math. Phys.* **7**(1) (1995) 73–102.
- [12] P. EXNER, P. ŠEBA, P. ŠŤOVÍČEK. On existence of a bound state in an L-shaped waveguide. *Czech. J. Phys.* **39**(11) (1989) 1181–1191.
- [13] P. EXNER, M. TATER. Spectrum of Dirichlet Laplacian in a conical layer. *J. Phys.* **A43** (2010).
- [14] P. FREITAS. Precise bounds and asymptotics for the first Dirichlet eigenvalue of triangles and rhombi. *J. Funct. Anal.* **251** (2007) 376–398.
- [15] L. FRIEDLANDER, M. SOLOMYAK. On the spectrum of narrow periodic waveguides. *Russ. J. Math. Phys.* **15**(2) (2008) 238–242.
- [16] L. FRIEDLANDER, M. SOLOMYAK. On the spectrum of the Dirichlet Laplacian in a narrow strip. *Israel J. Math.* **170** (2009) 337–354.
- [17] P. GRISVARD. *Boundary Value Problems in Non-Smooth Domains*. Pitman, London 1985.
- [18] B. HELFFER. *Semi-classical analysis for the Schrödinger operator and applications*, volume 1336 of *Lecture Notes in Mathematics*. Springer-Verlag, Berlin 1988.
- [19] B. HELFFER, A. MORAME. Magnetic bottles for the Neumann problem: the case of dimension 3. *Proc. Indian Acad. Sci. Math. Sci.* **112**(1) (2002) 71–84. Spectral and inverse spectral theory (Goa, 2000).
- [20] V. A. KONDRAT'EV. Boundary-value problems for elliptic equations in domains with conical or angular points. *Trans. Moscow Math. Soc.* **16** (1967) 227–313.
- [21] K. LU, X.-B. PAN. Surface nucleation of superconductivity in 3-dimensions. *J. Differential Equations* **168**(2) (2000) 386–452. Special issue in celebration of Jack K. Hale's 70th birthday, Part 2 (Atlanta, GA/Lisbon, 1998).
- [22] A. MORAME, F. TRUC. Remarks on the spectrum of the Neumann problem with magnetic field in the half-space. *J. Math. Phys.* **46**(1) (2005) 012105, 13.

LABORATOIRE IRMAR, UMR 6625 DU CNRS, CAMPUS DE BEAULIEU 35042 RENNES CEDEX, FRANCE

E-mail address: monique.dauge@univ-rennes1.fr

URL: <http://perso.univ-rennes1.fr/monique.dauge/>

E-mail address: nicolas.raymond@univ-rennes1.fr

URL: <http://perso.univ-rennes1.fr/nicolas.raymond/>