



Fig 1. Biochemical progression-free survival stratified by preoperative PSA

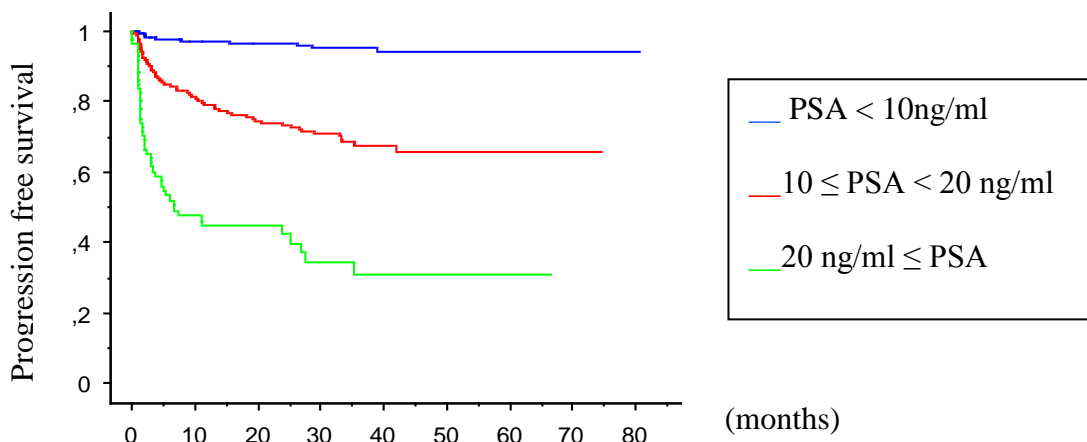


Fig 2. Biochemical progression-free survival stratified by Gleason score

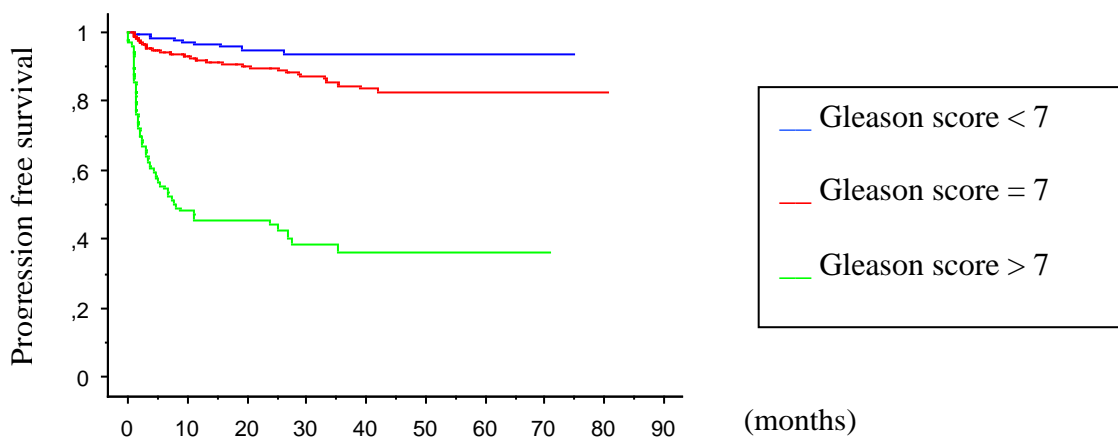


Fig 3. Biochemical progression-free survival stratified by surgical margins

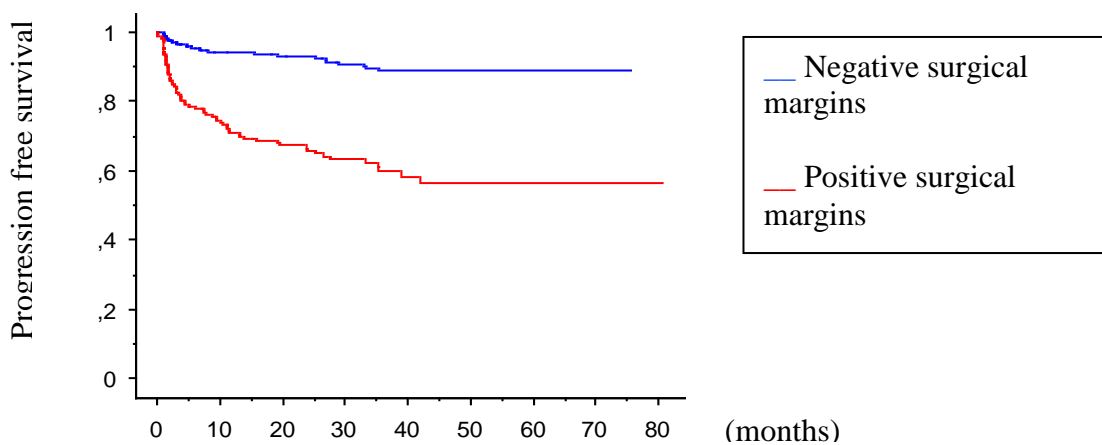


Fig 4. Biochemical progression-free survival stratified by pathological stage

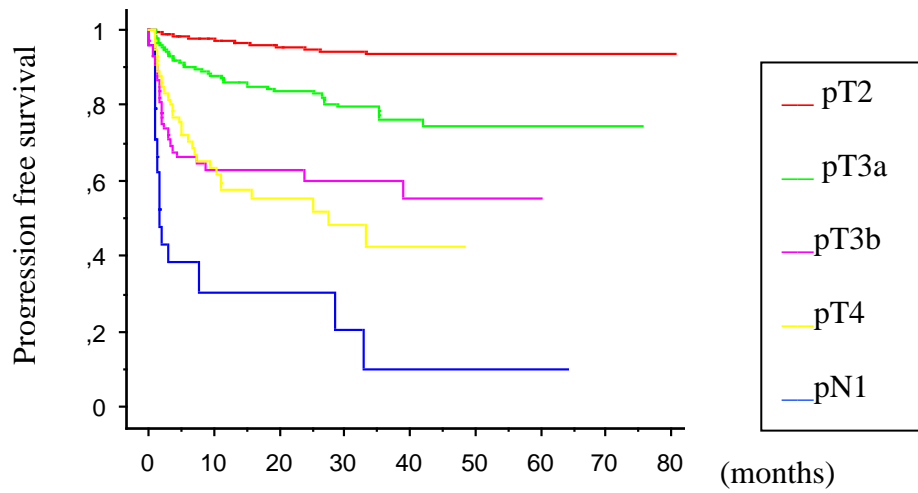


Fig 5. Biochemical progression-free survival stratified by pathological stage and surgical margins

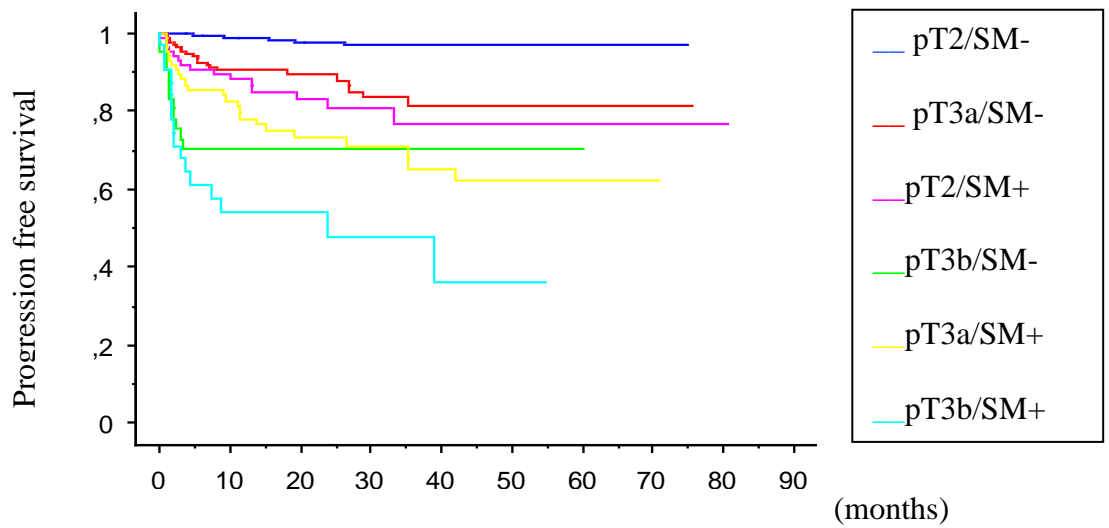


Table 1 : Preoperative patient characteristics

No. pts	1115
Mean age (range)	62.5 (42-81)
Clinical stage (%)	
T1a-b	18 (1.6)
T1c	894 (80.2)
T2	193 (17.3)
T3	10 (0.9)
Mean PSA (ng/ml)	9.8 (0.8-99)
Gleason score (%)	
<7	739 (66)
=7	326 (29)
>7	50 (5)

Table 2 : Postoperative patients characteristics

Stage	pN	Total	Positive margin (%)	Gleason score (%)		
				<7	=7	>7
pT2a	pN0/pNx	126 (11.2%)	7 (5.5)	76 (6.7)	47 (4.2)	3 (0.3)
pT2b	pN0/pNx	30 (2.7%)	3 (10)	10 (1)	19 (1.6)	1 (0.1)
pT2c	pN0/pNx	508 (45.6%)	97 (19.1)	175 (15.6)	323 (29)	10 (1)
pT2c	pN1	3 (0.2%)	0	0	3 (0.2)	0
pT3a	pN0/pNx	250 (22.4%)	82 (32.8)	20 (2)	197 (17.6)	33 (2.8)
pT3a	pN1	5 (0.5%)	2 (40)	0	2 (0.2)	3 (0.3)
pT3b	pN0/pNx	100 (9%)	41 (41)	3 (0.3)	56 (5)	41 (3.7)
pT3b	pN1	10 (1%)	3 (30)	0	7 (0.7)	3 (0.3)
pT4	pN0/pNx	77 (6.9%)	57 (74)	4 (0.3)	45 (4)	18 (2.6)
pT4	pN1	6 (0.5%)	4 (66.6)	0	2 (0.2)	4 (0.3)

Table 3: Multivariate Cox proportional hazard model for different variables for prediction of biochemical recurrence risk

	Risk Ratio	95% CI	P value
PSA < 10 ng/ml	1		
PSA 10-20 ng/ml	1,243	0,795-1,943	0,339
PSA ≥ 20 ng/ml	2,920	1,743-4,894	<0,0001
Gleason score < 7	1		
Gleason score = 7	1,280	0,583-2,809	0,538
Gleason score > 7	4,447	1,868-10,584	0,001
pT2	1		
pT3a	2,759	1,640-4,643	<0,0001
pT3b	3,682	1,928-7,032	<0,0001
Negative lymph nodes	1		
Positive lymph nodes	5,606	2,904-10,825	<0,0001
Negative surgical margin	1		
Positive surgical margin	2,717	1,817-4,063	<0,0001

(95% CI: 95% confidence interval, PSA: prostate-specific antigen)

Table 4 : Oncological results of open, TLRP and ELRP prostatectomy

References	N° Pts	% Surgical margins		Progression-free survival (%)			
				3-year		5-year	
		pT2	pT3	pT2	pT3	pT2	pT3
Open prostatectomy							
<i>Catalona and Smith</i> ^[19]	1778	20.9		92.5	78.7	90	68.7
<i>Han et al</i> ^[17]	2494	-	26.4	85	75	75	60
<i>Hul et al</i> ^[21]	1000	12.8		95.6	85.3	94.9	75.3
TLRP							
<i>Guillonnet al</i> ^[9]	1000	15.5	31.1	89	67	-	-
<i>Rassweiler et al</i> ^[10]	500	7.4	31.8	95.2	71.6	89.5	68.2
<i>Lein et al</i> ^[23]	1000	13.6	51.5	95.4	78.6	-	-
<i>Hara I</i> ^[24]	136	27.5	68	91.8	51	-	-
<i>Pavlovich et al</i> ^[18]	528	6.2	39.3	98.2	78.5	-	-
<i>la te rejiuo</i> ^[16]	1564	-	-	-	-	83	69
ELRP							
<i>Rozet et al</i> ^[14]	600	14.6	25.6	-	-	-	-
<i>Stolzenburg et al</i> ^[15]	1300	9.8	34.3	-	-	-	-
<i>Present series</i>	1115	16	34.8	93.4	72.5	93.4	70.2