

INSTITUT NATIONAL DE RECHERCHE EN INFORMATIQUE ET EN AUTOMATIQUE

On the generation of Krylov subspace bases

Bernard Philippe — Lothar Reichel

N° 7099

November 2009

Thème NUM



*Rapport
de recherche*

On the generation of Krylov subspace bases

Bernard Philippe* , Lothar Reichel†

Thème NUM — Systèmes numériques
Équipe-Projet Sage

Rapport de recherche n° 7099 — November 2009 — 23 pages

Abstract: Many problems in scientific computing involving a large sparse matrix A are solved by Krylov subspace methods. This includes methods for the solution of large linear systems of equations with A , for the computation of a few eigenvalues and associated eigenvectors of A , and for the approximation of nonlinear matrix functions of A . When the matrix A is non-Hermitian, the Arnoldi process commonly is used to compute an orthonormal basis of a Krylov subspace associated with A . The Arnoldi process often is implemented with the aid of the modified Gram-Schmidt method. It is well known that the latter constitutes a bottleneck in parallel computing environments, and to some extent also on sequential computers. Several approaches to circumvent orthogonalization by the modified Gram-Schmidt method have been described in the literature, including the generation of Krylov subspace bases with the aid of suitably chosen Chebyshev or Newton polynomials. We review these schemes and describe new ones. Numerical examples are presented.

Key-words: Krylov subspace basis, Arnoldi process, iterative method

* IRISA/INRIA-Rennes, Campus de Beaulieu, 35042 Rennes cedex, France.
E-mail: Bernard.Philippe@irisa.fr

† Department of Mathematical Sciences, Kent State University, Kent, OH 44242, USA.
E-mail: reichel@math.kent.edu

Construction de bases de sous-espaces de Krylov

Résumé : Beaucoup de problèmes du calcul numérique qui font intervenir une grande matrice creuse A sont résolus par des méthodes de sous-espaces de Krylov. Il en est ainsi de la résolution d'un système linéaire défini par A , du calcul de quelques valeurs propres ou vecteurs propres de A et de l'approximation de fonctions non linéaires de la matrice A . Quand la matrice A n'est pas hermitienne, une base orthonormale d'un sous-espace de Krylov de A est habituellement calculée par le procédé d'Arnoldi. En général, ce procédé met en œuvre une orthogonalisation grâce au procédé de Gram-Schmidt modifié. Mais il est bien connu que celui-ci constitue un goulot d'étranglement pour le calcul parallèle et même, d'une certaine façon, aussi pour le calcul séquentiel. Plusieurs approches se passant de l'algorithme de Gram-Schmidt modifié sont déjà connues, en particulier celles qui construisent des bases à partir de polynômes de Tchebychev ou de Newton. Nous présentons ici une analyse de ces approches et en proposons de nouvelles. Des expériences numériques concluent le rapport.

Mots-clés : Bases de sous-espaces de Krylov, procédé d'Arnoldi, méthode itérative

1 Introduction

Let $A \in \mathbb{C}^{n \times n}$ be a large and sparse matrix. Many commonly used numerical methods for the solution of large-scale problems involving A , such as the solution of linear systems of equations,

$$A\mathbf{x} = \mathbf{b}, \quad \mathbf{x}, \mathbf{b} \in \mathbb{C}^n, \quad (1)$$

the computation of a few eigenvalues and associated eigenvectors of A , and the evaluation of expressions of the form $f(A)\mathbf{b}$, where f is a nonlinear function, first project the problem to Krylov subspace of small to moderate dimension and then solve the projected problem; see, e.g., [5, 6, 28] and references therein for discussions of this approach.

In order to simplify our presentation, we will assume the matrix A to be nonsingular and focus on implementations of the Generalized Minimal Residual (GMRES) method, introduced by Saad and Schultz [29, 30], for the solution of large linear systems of equations (1) with a sparse and nonsymmetric matrix. However, our discussion applies also to Krylov subspace methods for eigenvalue computation and the evaluation of matrix functions.

Let \mathbf{x}_0 be an initial approximate solution of (1) and define the associated residual vector $\mathbf{r}_0 := \mathbf{b} - A\mathbf{x}_0$. GMRES computes a more accurate approximate solution $\mathbf{x}_1 := \mathbf{x}_0 + \mathbf{z}_0$, with $\mathbf{z}_0 \in \mathcal{K}_m(A, \mathbf{r}_0)$, such that

$$\|\mathbf{b} - A\mathbf{x}_1\| = \|\mathbf{r}_0 - A\mathbf{z}_0\| = \min_{\mathbf{z} \in \mathcal{K}_m(A, \mathbf{r}_0)} \|\mathbf{r}_0 - A\mathbf{z}\|, \quad (2)$$

where

$$\mathcal{K}_m(A, \mathbf{r}_0) := \text{span}\{\mathbf{r}_0, A\mathbf{r}_0, \dots, A^{m-1}\mathbf{r}_0\} \quad (3)$$

is a Krylov subspace. The positive integer m is assumed to be much smaller than n , and small enough, so that $\dim(\mathcal{K}_m(A, \mathbf{r}_0)) = m$. Throughout this paper, $\|\cdot\|$ denotes the Euclidean vector norm or the associated induced matrix norm. The present paper considers complex linear systems of equations. When A and \mathbf{b} have real entries only, the computations can be organized so that only real floating-point arithmetic is required, and only real vectors have to be stored.

The minimization problem (2) commonly is solved by first applying m steps of the Arnoldi process to the matrix A with initial vector \mathbf{r}_0 . This yields the Arnoldi decomposition

$$AV_m = V_m H_m + \mathbf{f}_m \mathbf{e}_m^T, \quad (4)$$

where the matrix $V_m := [\mathbf{v}_1, \mathbf{v}_2, \dots, \mathbf{v}_m] \in \mathbb{C}^{n \times m}$ has orthonormal columns with $\mathbf{v}_1 = \mathbf{r}_0 / \|\mathbf{r}_0\|$, the matrix $H_m \in \mathbb{C}^{m \times m}$ is upper Hessenberg with positive sub-diagonal entries, and the vector $\mathbf{f}_m \in \mathbb{C}^n$ satisfies $V_m^* \mathbf{f}_m = \mathbf{0}$. The superscript $*$ denotes transposition and complex conjugation, the superscript T transposition only, and \mathbf{e}_k denotes the k th axis vector of appropriate dimension.

Assume that the vector \mathbf{f}_m in the Arnoldi decomposition is nonvanishing. Then we may define $\mathbf{v}_{m+1} := \mathbf{f}_m / \|\mathbf{f}_m\|$ and $V_{m+1} := [V_m, \mathbf{v}_{m+1}] \in \mathbb{C}^{n \times (m+1)}$, and we can express (4) in the form

$$AV_m = V_{m+1} \hat{H}_m, \quad (5)$$

where the matrix $\hat{H}_m \in \mathbb{C}^{(m+1) \times m}$ is obtained by appending the row $\|\mathbf{f}_m\| \mathbf{e}_m^T$ to H_m . We also refer to the augmented matrix \hat{H}_m as an upper Hessenberg matrix. Substituting (5) into (2) yields

$$\min_{\mathbf{z} \in \mathcal{K}_m(A, \mathbf{r}_0)} \|\mathbf{r}_0 - A\mathbf{z}\| = \min_{\mathbf{y} \in \mathbb{C}^m} \left\| \|\mathbf{r}_0\| \mathbf{e}_1 - \hat{H}_m \mathbf{y} \right\|. \quad (6)$$

The solution \mathbf{y}_0 of the least-squares problem on the right-hand side of (6) is determined by QR factorization of the matrix \hat{H}_m , and we obtain the solution $\mathbf{z}_0 := V_m \mathbf{y}_0$ of the minimization problem (2) and the corresponding approximate solution $\mathbf{x}_1 := \mathbf{x}_0 + V_m \mathbf{y}_0$ of (1). For numerical stability, the Arnoldi process is implemented with the modified Gram-Schmidt method. This yields the following algorithm.

Algorithm 1.1 *GMRES implementation based on the Arnoldi process.*

Input: m , \mathbf{x}_0 , $\mathbf{r}_0 := \mathbf{b} - A\mathbf{x}_0$.

Output: approximate solution \mathbf{x}_1 , upper Hessenberg matrix $\hat{H}_m = [\eta_{jk}] \in \mathbb{C}^{(m+1) \times m}$ (the computed η_{jk} are the nontrivial entries).

$\mathbf{v}_1 := \mathbf{r}_0 / \|\mathbf{r}_0\|$;

for $k := 1, 2, \dots, m$ do

$\mathbf{w} := A\mathbf{v}_k$;

 for $j := 1, 2, \dots, k$ do

$\eta_{jk} := \mathbf{w}^* \mathbf{v}_j$; $\mathbf{w} := \mathbf{w} - \eta_{jk} \mathbf{v}_j$;

 end j ;

$\eta_{k+1,k} := \|\mathbf{w}\|$; $\mathbf{v}_{k+1} := \mathbf{w} / \eta_{k+1,k}$;

end k ;

Solve (6) for \mathbf{y}_0 by computing the QR factorization of \hat{H}_m .

$\mathbf{x}_1 := \mathbf{x}_0 + V_m \mathbf{y}_0$; $\mathbf{r}_1 := \mathbf{b} - A\mathbf{x}_1$; \square

We remark that the vector \mathbf{r}_1 in the last line of Algorithm 1.1 also can be evaluated according to $\mathbf{r}_1 := \mathbf{r}_0 - V_{m+1} \hat{H}_m \mathbf{y}_0$; however, this formula may yield lower accuracy than $\mathbf{r}_1 := \mathbf{b} - A\mathbf{x}_1$. We therefore use the latter formula in the algorithm.

If \mathbf{f}_m vanishes in (4), then the least-squares problem (6) simplifies to a linear system of equations and Algorithm 1.1 yields the solution of (1). For this reason, we assume henceforth that $\mathbf{f}_m \neq \mathbf{0}$ for all m considered.

The storage requirement of Algorithm 1.1 grows linearly with m , and the number of arithmetic floating point operations (flops) required grows quadratically with m . Therefore, one generally chooses $10 \leq m \leq 50$. If the residual error \mathbf{r}_1 associated with the computed approximate solution \mathbf{x}_1 determined by Algorithm 1.1 is not sufficiently small, then one seeks to determine an improved approximate solution by solving a minimization problem analogous to (2). This yields the cyclic GMRES algorithm; see [29, 30].

Algorithm 1.2 *Cyclic GMRES(m) algorithm.*

Input: m , \mathbf{x}_0 , $\mathbf{r}_0 := \mathbf{b} - A\mathbf{x}_0$, tolerance $\epsilon > 0$;

Output: approximate solution \mathbf{x}_j , such that $\|\mathbf{b} - A\mathbf{x}_j\| \leq \epsilon$;

for $j := 0, 1, 2, \dots$ until $\|\mathbf{r}_j\| \leq \epsilon$ do

$$\text{Solve } \min_{\mathbf{z} \in \mathcal{K}_m(A, \mathbf{r}_j)} \|\mathbf{r}_j - A\mathbf{z}\| \text{ for } \mathbf{z}_j \in \mathcal{K}_m(A, \mathbf{r}_j). \quad (7)$$

$$\begin{aligned} \mathbf{x}_{j+1} &:= \mathbf{x}_j + \mathbf{z}_j; \\ \mathbf{r}_{j+1} &:= \mathbf{r}_j - A\mathbf{z}_j; \end{aligned} \tag{8}$$

end j ; □

The computation of the solution of (2) and (7) by application of the Arnoldi process requires many vector-vector operations. These operations can be difficult to implement efficiently both on sequential and parallel computers due to their low granularity and the frequent global communication required. The development of alternative implementations therefore has received considerable attention; see, e.g., [3, 4, 8, 12, 16, 17, 31]. The methods proposed in these references first seek to determine a fairly well-conditioned, but generally nonorthogonal, basis for the Krylov subspace (3), and then orthonormalize it. The latter can be carried out with matrix-vector operations and has higher granularity than the computations of Algorithm 1.1. The best implementations of this kind execute faster than Algorithms 1.1 and 1.2, not only on parallel computers, but also on sequential ones; see [4, 16] for examples.

Joubert and Carey [16, 17] use Chebyshev polynomials for a suitable interval in the complex plane to generate a Krylov subspace basis. The location of this interval is important for the conditioning of the basis generated. The Chebyshev polynomials are of nearly constant magnitude on ellipses in the complex plane, whose foci are the endpoints of the interval; see Section 3 or [9, 22]. Let $\lambda(A)$ denote the spectrum of A and let $\mathcal{E}_{\lambda(A)}$ denote the smallest ellipse, which contains $\lambda(A)$. The analyses of Section 3 and by Joubert and Carey [16], as well as computed examples reported in Section 5 and [16, 17], show that the Chebyshev polynomials for the interval between the foci of $\mathcal{E}_{\lambda(A)}$ can be applied to determine useful Krylov subspace bases for many matrices A . Here we only note that in actual computations $\lambda(A)$ typically is not known and generally is too expensive to compute. Consequently, for most matrices A , the foci of the ellipse $\mathcal{E}_{\lambda(A)}$ cannot be determined. Instead the eigenvalues of H_m , which are Ritz values of A , are used to determine an approximation of the foci of $\mathcal{E}_{\lambda(A)}$. For instance, Joubert and Carey [16, 17] propose to carry out Algorithm 1.1 initially and determine the smallest ellipse that contains all the eigenvalues of H_m . The subsequently generated Krylov subspaces are represented by Chebyshev polynomials for the interval between the foci of this ellipse. We remark that the proposed choice of ellipse may not be meaningful if the matrix A is pronouncedly nonnormal; see, e.g., [24] for a discussion.

Algorithm 1.2 requires the solution of a sequence of minimization problems (7). The solution of these problems by Algorithm 1.1 generates a sequence of $m \times m$ upper Hessenberg matrices H_m ; cf. (4). We show in Section 2 how matrices G_m , which are unitarily similar to the matrices H_m , can be determined inexpensively during the computation with nonorthonormal Krylov subspace bases without carrying out computations of the form described in Algorithm 1.1. The availability of the matrices G_m allows Ritz values of A to be computed periodically and the interval defining Chebyshev polynomial bases to be updated during the solution process. The computations with Chebyshev polynomial Krylov subspace bases is described in Section 3.

There are matrices A for which Krylov subspace bases generated by Chebyshev polynomials are too ill-conditioned to be useful already for moderate subspace dimensions. For instance, this situation may arise when most of the

eigenvalues are confined to a small area in the interior of $\mathcal{E}_{\lambda(A)}$. In these situations another polynomial basis should be used. Newton polynomial bases have been applied in [3, 4, 12, 31]. Section 4 extends this approach by describing how to i) construct the Newton polynomials when many iterations are required but only few Ritz values are available, and ii) incorporate information about new Ritz values during the solution process. Section 5 presents a few computed examples, and Section 6 contains concluding remarks.

We close this section with some comments on hybrid iterative methods. These methods “learn” about the spectrum during the iterations, e.g., by initially or periodically computing Ritz values, and then adjusting iteration parameters that determine the rate of convergence by using the new Ritz values computed. Manteuffel [19, 20] described the first hybrid method, an adaptive Chebyshev iteration scheme. A recent comparison of implementations of Chebyshev iteration is presented in [15]. Other hybrid methods are discussed in, e.g., [7, 11, 21, 24, 27, 31, 32]. Hybrid schemes may be more efficient both on sequential and parallel computers than Algorithm 1.2 provided that certain iteration parameters, which determine the performance of hybrid methods, are set to appropriate values. However, for many linear systems of equations it is difficult to determine suitable values of these parameters. In fact, there may not exist suitable values. This is the case for Chebyshev iteration when the origin is in the convex hull of the spectrum. Moreover, there are linear systems of equations for which the iteration parameters should not be determined by the eigenvalues; the pseudospectrum or field of values may be more relevant quantities to study when determining iteration parameters; see Eiermann [10] and Nachtigal et al. [24] for discussions. We note that the determination of parameters for the schemes discussed in the present paper is less critical than for hybrid iterative methods provided that the generated Krylov subspace basis is not too ill-conditioned, because the values of the parameters in the former only affect the conditioning of the Krylov subspace basis, but not the rate of convergence.

2 Computation of Ritz values without the Arnoldi process

We discuss how the matrix \hat{H}_m in the decomposition (5) can be computed inexpensively during the computations with a nonorthonormal Krylov subspace basis. This matrix can be applied to determine approximations of pseudospectra of A ; the eigenvalues of the associated square matrix H_m , defined by (4), are Ritz values of A .

The nonorthogonal Krylov subspace bases of this paper are generated with recursion formulas of the form

$$\alpha_{k+1}\mathbf{z}_{k+1} = (A - \beta_{k+1}I)\mathbf{z}_k - \gamma_{k+1}\mathbf{z}_{k-1}, \quad k = 0, 1, 2, \dots, \quad (9)$$

where the α_k , β_k , and γ_k are user-specified scalars with $\gamma_1 = 0$.

The iterative methods first execute Algorithm 1.1 in order to determine the approximate solution \mathbf{x}_1 , the associated residual vector \mathbf{r}_1 , and the matrix \hat{H}_m . The latter is helpful for choosing suitable parameters α_k , β_k , and γ_k . We discuss

these choices in Sections 3 and 4. Here we only note that $\mathbf{z}_0 = \mathbf{r}_1$ yields

$$\mathcal{K}_m(A, \mathbf{r}_1) = \text{span}\{\mathbf{z}_0, \mathbf{z}_1, \dots, \mathbf{z}_{m-1}\}.$$

Introduce the Krylov subspace basis matrices

$$Z_m = [\mathbf{z}_0, \mathbf{z}_1, \dots, \mathbf{z}_{m-1}] \in \mathbb{C}^{n \times m}, \quad Z_{m+1} = [Z_m, \mathbf{z}_m] \in \mathbb{C}^{n \times (m+1)}, \quad (10)$$

as well as the tridiagonal matrix

$$\hat{T}_m = \begin{bmatrix} \beta_1 & \gamma_2 & & & & & & \mathbf{O} \\ \alpha_1 & \beta_2 & \gamma_3 & & & & & \\ & \alpha_2 & \beta_3 & \gamma_4 & & & & \\ & & \alpha_3 & \ddots & \ddots & & & \\ & & & \ddots & \beta_{m-1} & \gamma_m & & \\ \mathbf{O} & & & & \alpha_{m-1} & \beta_m & & \\ & & & & & & \alpha_m & \end{bmatrix} \in \mathbb{C}^{(m+1) \times m}. \quad (11)$$

Then the relations (9), for $0 \leq k \leq m$, can be expressed as

$$AZ_m = Z_{m+1}\hat{T}_m. \quad (12)$$

Define the QR factorization

$$Z_{m+1} = W_{m+1}R_{m+1} \quad (13)$$

where the matrix $W_{m+1} \in \mathbb{C}^{n \times (m+1)}$ has orthonormal columns with $W_{m+1}\mathbf{e}_1 = \mathbf{r}_1/\|\mathbf{r}_1\|$, and the matrix $R_{m+1} \in \mathbb{C}^{(m+1) \times (m+1)}$ is upper triangular. Introduce the condition number

$$\text{cond}(Z_{m+1}) = \frac{\max_{\|\mathbf{y}\|=1} \|Z_{m+1}\mathbf{y}\|}{\min_{\|\mathbf{y}\|=1} \|Z_{m+1}\mathbf{y}\|}. \quad (14)$$

Let R_m be the leading $m \times m$ principal submatrix of R_{m+1} and let the matrix W_m consist of the first m columns of W_{m+1} . Then $Z_m = W_m R_m$ is a QR factorization. Substituting the QR factorizations of Z_{m+1} and Z_m into (12) gives

$$AW_m = W_{m+1}\hat{G}_m, \quad \hat{G}_m = R_{m+1}\hat{T}_m R_m^{-1}, \quad (15)$$

where we note that the $(m+1) \times m$ matrix \hat{G}_m is upper Hessenberg. We are interested in relating the matrices W_{m+1} and \hat{G}_m above to the corresponding matrices V_{m+1} and \hat{H}_m determined by the Arnoldi process; cf. (5). The following proposition is a consequence of the Implicit Q Theorem; see, e.g., [33, Theorem 3.3].

Proposition 2.1 *Assume that m steps of the Arnoldi process can be applied to the matrix $A \in \mathbb{C}^{n \times n}$ with initial vector $\mathbf{r}_1 \in \mathbb{C}^n$ without breakdown and give the decomposition*

$$AV_m = V_{m+1}\hat{H}_m,$$

where $V_{m+1} \in \mathbb{C}^{n \times (m+1)}$ has orthonormal columns, V_m consists of the first m columns of V_{m+1} , and $\hat{H}_m \in \mathbb{C}^{(m+1) \times m}$ is upper Hessenberg with positive subdiagonal entries. Let

$$AW_m = W_{m+1}\hat{G}_m$$

be another decomposition, such that $W_{m+1} \in \mathbb{C}^{n \times (m+1)}$ has orthonormal columns, $W_m \mathbf{e}_1 = V_m \mathbf{e}_1$, and $\hat{G}_m \in \mathbb{C}^{(m+1) \times m}$ is upper Hessenberg with nonvanishing subdiagonal entries. Then $W_{m+1} = V_{m+1}D_{m+1}$ and $\hat{G}_m = D_{m+1}^{-1}\hat{H}_m D_m$, where $D_{m+1} \in \mathbb{C}^{(m+1) \times (m+1)}$ is unitary and diagonal, and D_m is the leading $m \times m$ principal submatrix of D_{m+1} . In particular, the matrices \hat{H}_m and \hat{G}_m are unitarily equivalent, i.e., they have the same singular values. The matrices H_m and G_m , obtained by removing the last row of \hat{H}_m and \hat{G}_m , respectively, are unitarily similar, i.e., they have the same eigenvalues.

The eigenvalues of the matrices H_m and G_m provide insight about the spectrum of A , at least when A is not pronouncedly nonnormal. Similarly, the matrices \hat{H}_m and \hat{G}_m shed some light on the pseudospectrum of A and, in particular, on the nonnormality of A ; see [35, 36] for discussions on the latter.

We can use the Arnoldi-like decomposition (12) and the factorization (15) of \hat{G}_m when determining the correction of the approximate solution \mathbf{x}_1 as follows. In view of that

$$\min_{\mathbf{z} \in \mathcal{K}_m(A, \mathbf{r}_1)} \|\mathbf{r}_1 - A\mathbf{z}\| = \min_{\mathbf{y} \in \mathbb{C}^m} \|\mathbf{r}_1 - AZ_m\mathbf{y}\| = \min_{\mathbf{y} \in \mathbb{C}^m} \|\|\mathbf{r}_1\|e_1 - R_{m+1}\hat{T}_m\mathbf{y}\|, \quad (16)$$

we solve the small least-squares problem on the right-hand side above for $\mathbf{y}_1 \in \mathbb{R}^m$ and obtain the new approximate solution of (1) from

$$\mathbf{x}_2 := \mathbf{x}_1 + Z_m\mathbf{y}_1.$$

3 Chebyshev polynomial bases

This section discusses the construction of Krylov subspace bases with the aid of shifted and scaled versions of the standard Chebyshev polynomials of the first kind,

$$T_k(t) := \cosh(k \cosh^{-1}(t)), \quad k = 0, 1, 2, \dots \quad (17)$$

Introduce the family of ellipses in \mathbb{C} ,

$$\mathcal{E}^{(\rho)} := \{e^{i\theta} + \rho^{-2}e^{-i\theta} : -\pi < \theta \leq \pi\}, \quad i := \sqrt{-1}, \quad \rho \geq 1.$$

Then $\mathcal{E}^{(\rho)}$ has foci at $\pm 2\rho^{-1}$. We will consider the scaled Chebyshev polynomials

$$C_k^{(\rho)}(z) := \frac{1}{\rho^k} T_k\left(\frac{\rho}{2}z\right), \quad k = 0, 1, 2, \dots$$

It follows from

$$T_k\left(\frac{1}{2}(\rho e^{i\theta} + \rho^{-1}e^{-i\theta})\right) = \frac{1}{2}(\rho^k e^{ik\theta} + \rho^{-k} e^{-ik\theta})$$

that on the ellipse $\mathcal{E}^{(\rho)}$, we have

$$C_k^{(\rho)}(e^{i\theta} + \rho^{-2}e^{-i\theta}) = \frac{1}{2}(e^{ik\theta} + \rho^{-2k}e^{-ik\theta}); \quad (18)$$

see, e.g., [9, 22] for properties of Chebyshev polynomials.

Consider the inner product on $\mathcal{E}^{(\rho)}$,

$$(f, g) := \int_{-\pi}^{\pi} f(e^{i\theta} + \rho^{-2}e^{-i\theta}) \overline{g(e^{i\theta} + \rho^{-2}e^{-i\theta})} d\theta, \quad (19)$$

where the bar denotes complex conjugation. Then

$$(C_j^{(\rho)}, C_k^{(\rho)}) = \begin{cases} 0, & j \neq k, \\ 2\pi, & j = k = 0, \\ \frac{1}{2}\pi(1 + \rho^{-4}), & j = k > 0. \end{cases} \quad (20)$$

Let \mathbb{P}_m denote the set of all polynomials of degree at most m . We first show that the scaled Chebyshev polynomials $C_k^{(\rho)}$, $k = 0, 1, 2, \dots$, form a fairly well conditioned basis of \mathbb{P}_m on $\mathcal{E}^{(\rho)}$. Subsequently, we discuss the condition number of Krylov subspace bases determined with the aid of these polynomials. Gautschi [13, 14] studied several polynomial bases for approximation of functions on a real interval. Our investigation is inspired by and related to Gautschi's work.

Let $\{\phi_j\}_{j=0}^m$ be a family of polynomials with ϕ_j of degree j . We would like to determine the sensitivity of the polynomial

$$\Phi_m(z) := \sum_{j=0}^m \delta_j \phi_j(z), \quad z \in \mathcal{E}^{(\rho)},$$

to perturbations in the coefficients $\delta_j \in \mathbb{C}$. For this purpose we introduce the condition number

$$\kappa_{\mathbb{S}}(\{\phi_j\}_{j=0}^m) := \frac{\max_{\|\mathbf{d}\|=1} \max_{z \in \mathbb{S}} \left| \sum_{j=0}^m \delta_j \phi_j(z) \right|}{\min_{\|\mathbf{d}\|=1} \max_{z \in \mathbb{S}} \left| \sum_{j=0}^m \delta_j \phi_j(z) \right|}, \quad \mathbf{d} = [\delta_0, \delta_1, \dots, \delta_m]^T, \quad (21)$$

for the polynomial basis $\{\phi_j\}_{j=0}^m$ on a compact set \mathbb{S} in \mathbb{C} . It is convenient to introduce the uniform norms for continuous functions on \mathbb{S} ,

$$\|g\|_{\mathbb{S}} := \max_{z \in \mathbb{S}} |g(z)|, \quad g \in C(\mathbb{S}),$$

and for vectors in \mathbb{C}^{m+1} ,

$$\|\mathbf{d}\|_{\infty} := \max_{0 \leq j \leq m} |\delta_j|, \quad \mathbf{d} = [\delta_0, \delta_1, \dots, \delta_m]^T \in \mathbb{C}^{m+1}.$$

These norms are used in the proof of the following theorem, which considers the basis $\{C_j^{(\rho)}\}_{j=0}^m$ on $\mathcal{E}^{(\rho)}$.

Theorem 3.1

$$\kappa_{\mathcal{E}^{(\rho)}}(\{C_j^{(\rho)}\}_{j=0}^m) \leq 4(m+1).$$

Proof. Let $P_m^{(\rho)} := \sum_{j=0}^m \delta_j C_j^{(\rho)}$ and $\mathbf{d} = [\delta_0, \delta_1, \dots, \delta_m]^T$. Then

$$\|P_m^{(\rho)}\|_{\mathcal{E}(\rho)} \leq \sum_{j=0}^m |\delta_j| \max_{0 \leq j \leq m} \|C_j^{(\rho)}\|_{\mathcal{E}(\rho)} \leq \|\mathbf{d}\| \sqrt{m+1},$$

where the last inequality follows from the fact that $\|C_j^{(\rho)}\|_{\mathcal{E}(\rho)} \leq 1$, cf. (18), and from Cauchy's inequality. Hence, the numerator of (21) with $\phi_j := C_j^{(\rho)}$ is bounded by $\sqrt{m+1}$.

We turn to the denominator of (21). It follows from the orthogonality (20) of the $C_j^{(\rho)}$ that

$$\delta_j = \frac{(P_m^{(\rho)}, C_j^{(\rho)})}{(C_j^{(\rho)}, C_j^{(\rho)}), \quad j = 0, 1, \dots, m.$$

The Cauchy inequality and (20) yield

$$\begin{aligned} |\delta_j| &\leq \frac{2}{\pi} \left| (P_m^{(\rho)}, C_j^{(\rho)}) \right| \\ &\leq \frac{2}{\pi} \int_{-\pi}^{\pi} |P_m^{(\rho)}(e^{i\theta} + \rho^{-2}e^{-i\theta})| |C_j^{(\rho)}(e^{i\theta} + \rho^{-2}e^{-i\theta})| d\theta \\ &\leq \frac{2}{\pi} \left(\int_{-\pi}^{\pi} |P_m^{(\rho)}(e^{i\theta} + \rho^{-2}e^{-i\theta})|^2 d\theta \right)^{1/2} \left(\int_{-\pi}^{\pi} |C_j^{(\rho)}(e^{i\theta} + \rho^{-2}e^{-i\theta})|^2 d\theta \right)^{1/2} \\ &\leq 4 \|P_m^{(\rho)}\|_{\mathcal{E}(\rho)}. \end{aligned}$$

Hence,

$$\|P_m^{(\rho)}\|_{\mathcal{E}(\rho)} \geq \frac{1}{4} \|\mathbf{d}\|_{\infty}$$

and, therefore,

$$\min_{\|\mathbf{d}\|=1} \|P_m^{(\rho)}\|_{\mathcal{E}(\rho)} \geq \frac{1}{4} \min_{\|\mathbf{d}\|=1} \|\mathbf{d}\|_{\infty} = \frac{1}{4\sqrt{m+1}}.$$

This establishes the theorem. \square

Theorem 3.1 shows the scaled Chebyshev polynomials $C_j^{(\rho)}$ to be quite well conditioned on $\mathcal{E}(\rho)$. Gautschi [14] investigated the conditioning of monomial bases on an interval, and showed rapid exponential growth of the condition number with the number of basis elements. Note that suitably scaled monomial bases are well conditioned on circles centered at the origin. The conditioning of scaled monomial bases on ellipses with center at the origin is discussed in [25], where exponential growth with the number of basis elements is established for ellipses with distinct foci.¹

The bound of Theorem 3.1 is independent of translation, rotation, and scaling of the ellipse, provided that the standard Chebyshev polynomials T_j are translated, rotated, and scaled accordingly. Let $\mathcal{E}^{(f_1, f_2, r)}$ denote the ellipse with foci f_1 and f_2 and semi-major axis of length r . This ellipse can be mapped onto an ellipse $\mathcal{E}(\rho)$ with a suitable value of $\rho \geq 1$ by translation, rotation, and scaling. There is a parametric representation $\zeta(\theta)$, $-\pi < \theta \leq \pi$, of $\mathcal{E}^{(f_1, f_2, r)}$, such

¹The condition number used in [14, 25] is defined slightly differently from (21), but this does not affect the exponential growth rate.

that appropriately translated, rotated, and scaled versions, S_j , of the standard Chebyshev polynomials (17) satisfy

$$S_j(\zeta(\theta)) = C_j^{(\rho)}(e^{i\theta} + \rho^{-2}e^{-i\theta}), \quad -\pi < \theta \leq \pi, \quad j = 0, 1, 2, \dots \quad (22)$$

We will use the polynomials S_j to generate Krylov subspace bases.

Assume that m is small enough so that the columns of the matrix

$$Z_{m+1} = [S_0(A)\mathbf{r}_1, S_1(A)\mathbf{r}_1, \dots, S_m(A)\mathbf{r}_1] \in \mathbb{C}^{n \times (m+1)} \quad (23)$$

form a basis of the Krylov subspace $\mathcal{K}_{m+1}(A, \mathbf{r}_1)$. Since the T_j satisfy a three-term recursion relation, so do the S_j . Therefore, the matrix (23) can be determined from a recursion of the form (9).

The condition numbers (14) for the matrix (23) and (21) for the polynomial basis $\{S_j\}_{j=0}^m$ of \mathbb{P}_m easily can be related if we assume the matrix A to be normal and the vector \mathbf{r}_1 to be of particular form. Thus, let A have the spectral factorization

$$A = U\Lambda U^*, \quad \Lambda = \text{diag}[\lambda_1, \lambda_2, \dots, \lambda_n] \in \mathbb{C}^{n \times n}, \quad U \in \mathbb{C}^{n \times n}, \quad U^*U = I.$$

and let

$$\mathbf{r}_1 := U\mathbf{e}, \quad \mathbf{e} := \frac{1}{\sqrt{n}}[1, 1, \dots, 1]^T \in \mathbb{C}^n.$$

Then

$$\begin{aligned} \max_{\|\mathbf{d}\|=1} \|Z_{m+1}\mathbf{d}\| &= \max_{\|\mathbf{d}\|=1} \|U^*Z_{m+1}\mathbf{d}\| \geq \max_{\|\mathbf{d}\|=1} \|U^*Z_{m+1}\mathbf{d}\|_\infty \\ &= \max_{\|\mathbf{d}\|=1} \left\| \sum_{j=0}^m \delta_j S_j(\Lambda)\mathbf{e} \right\|_\infty \\ &= \frac{1}{\sqrt{n}} \max_{\|\mathbf{d}\|=1} \max_{\lambda \in \lambda(A)} \left| \sum_{j=0}^m \delta_j S_j(\lambda) \right| \end{aligned} \quad (24)$$

and

$$\begin{aligned} \min_{\|\mathbf{d}\|=1} \|Z_{m+1}\mathbf{d}\| &= \min_{\|\mathbf{d}\|=1} \|U^*Z_{m+1}\mathbf{d}\| \leq \sqrt{n} \min_{\|\mathbf{d}\|=1} \|U^*Z_{m+1}\mathbf{d}\|_\infty \\ &= \sqrt{n} \min_{\|\mathbf{d}\|=1} \left\| \sum_{j=0}^m \delta_j S_j(\Lambda)\mathbf{e} \right\|_\infty \\ &= \min_{\|\mathbf{d}\|=1} \max_{\lambda \in \lambda(A)} \left| \sum_{j=0}^m \delta_j S_j(\lambda) \right|. \end{aligned} \quad (25)$$

It follows from (14), (21), (24), and (25) that

$$\kappa(Z_{m+1}) \geq \frac{1}{\sqrt{n}} \kappa_{\lambda(A)}(\{S_j\}_{j=0}^m). \quad (26)$$

One can show similarly that

$$\kappa(Z_{m+1}) \leq \sqrt{n} \kappa_{\lambda(A)}(\{S_j\}_{j=0}^m). \quad (27)$$

The inequalities (26) and (27) show that a poorly conditioned polynomial basis on $\lambda(A)$ gives a badly conditioned matrix Z_{m+1} . It is therefore important for the success of the proposed GMRES implementation that the chosen polynomial basis not be very ill-conditioned on $\lambda(A)$.

Assume that the matrix A is fairly close to normal, let A have eigenvalues close to all points of the ellipse $\mathcal{E}^{(f_1, f_2, r)}$, and let the translated, rotated, and scaled Chebyshev polynomials S_j satisfy (22). Then the above discussion suggests that the matrix Z_{m+1} defined by (23) is fairly well conditioned for moderate values of m . Since the spectrum of A generally is not available, this observation suggests that one should determine the smallest ellipse $\mathcal{E}^{(f_1, f_2, r)}$ that contains all available Ritz values of A and use the translated, rotated, and scaled Chebyshev polynomials S_j associated with this ellipse. Joubert and Carey [16, 17] present a different analysis, but suggest the use of a similar Krylov subspace basis; our scheme differs from the one proposed in [16, 17] in that we update the ellipse repeatedly during the computations.

It is not important that the ellipse be determined to high accuracy. The computed ellipse yields the foci for the interval, which determines the Chebyshev polynomials used. These polynomials are scaled so that each column of the matrix (23) is of Euclidean norm one. The ellipse, and thereby its foci f_1 and f_2 , are updated when new Ritz values become available during the solution process. The foci, together with the normalization of the columns of the matrix (23), determine the recursion coefficients in (9).

Algorithm 3.2 *A Chebyshev basis-GMRES method.*

Input: $m_0, m, \mathbf{x}_0, \mathbf{r}_0 := \mathbf{b} - A\mathbf{x}_0$, tolerance $\epsilon > 0$.

Output: approximate solution \mathbf{x}_j , such that $\|\mathbf{b} - A\mathbf{x}_j\| \leq \epsilon$.

1. Apply Algorithm 1.1 to determine a new approximate solution \mathbf{x}_1 , the associated residual error \mathbf{r}_1 , and the $m_0 \times m_0$ upper Hessenberg matrix H_{m_0} .
2. Compute the spectrum $\mathbb{E} := \lambda(H_{m_0})$, determine the smallest ellipse that contains $\lambda(H_{m_0})$, and let f_1 and f_2 denote its foci.
3. for $j := 1, 2, \dots$ until $\|\mathbf{r}_j\| \leq \epsilon$ do
 4. Generate the Krylov subspace basis matrix Z_{m+1} , see (10), with columns

$$\mathbf{z}_\ell := \frac{S_\ell(A)\mathbf{r}_j}{\|S_\ell(A)\mathbf{r}_j\|}, \quad \ell = 0, 1, \dots, m,$$

using a recursion of the form (9), where the S_ℓ are Chebyshev polynomials associated with the interval between the foci f_1 and f_2 . The recursion coefficients

determine the nontrivial entries of the tridiagonal matrix \hat{T}_m ; see (11).

5. Compute the QR factorization $Z_{m+1} = W_{m+1}R_{m+1}$, the upper Hessenberg matrix \hat{G}_m in (15), and the leading $m \times m$ submatrix G_m of \hat{G}_m .

6. Solve

$$\min_{\mathbf{y} \in \mathbb{C}^m} \|\|\mathbf{r}_j\| \mathbf{e}_1 - R_{m+1} \hat{T}_m \mathbf{y}\|$$

for \mathbf{y}_j ; cf. (16). Let $\mathbf{x}_{j+1} := \mathbf{x}_j + Z_m \mathbf{y}_j$; $\mathbf{r}_{j+1} := \mathbf{b} - A\mathbf{x}_{j+1}$;

7. Compute the spectrum $\lambda(G_m)$, let $\mathbb{E} := \mathbb{E} \cup \lambda(G_m)$, determine the smallest ellipse that contains \mathbb{E} , and let f_1 and f_2 denote its foci.

end j . □

4 Newton polynomial bases

The scaled Newton polynomial basis can be defined recursively by

$$\phi_{j+1}(z) := \eta_{j+1}(z - \zeta_{j+1})\phi_j(z), \quad j = 0, 1, 2, \dots, \quad (28)$$

with $\phi_0(z) := 1$. Here the $\eta_j > 0$ are scaling factors and the ζ_{j+1} are zeros. Specifically, ζ_j is a zero of the polynomials ϕ_k for all $k \geq j$. Let \mathbb{S} be a compact set in \mathbb{C} , such that $(\mathbb{C} \cup \{\infty\}) \setminus \mathbb{S}$ is connected and possesses a Green's function. Let $\zeta_1 \in \mathbb{S}$ be arbitrary and let ζ_j for $j = 2, 3, 4, \dots$, satisfy

$$\prod_{j=1}^k |\zeta_{k+1} - \zeta_j| = \max_{z \in \mathbb{S}} \prod_{j=1}^k |z - \zeta_j|, \quad \zeta_{k+1} \in \mathbb{S}, \quad k = 1, 2, 3, \dots \quad (29)$$

Any sequence of points $\zeta_1, \zeta_2, \zeta_3, \dots$ which satisfies (29) is said to be a sequence of Leja points for \mathbb{S} . Leja [18] showed that

$$\lim_{k \rightarrow \infty} \prod_{j=1}^k |\zeta_{k+1} - \zeta_j|^{1/k} = \text{cap}(\mathbb{S}),$$

where $\text{cap}(\mathbb{S})$ denotes the capacity of \mathbb{S} . This and related results have been used in [26] to show that the condition number of the Newton polynomial basis on \mathbb{S} with Leja points for \mathbb{S} as interpolation points and suitable scaling factors η_j grows slower than exponentially with the number of basis functions. This observation motivated the investigations of Krylov subspace bases based on Newton polynomials [3, 4]. Recent results on polynomial interpolation at Leja points are reported by Taylor and Totik [34].

The set \mathbb{S} is in [4] chosen to be $\lambda(H_m)$, the spectrum of the matrix H_m generated during initial computations with Algorithm 1.1. A random initial vector is used for the Arnoldi process, with the aim of gaining information about the distribution of the eigenvalues of A . The eigenvalues of H_m are Leja ordered, i.e., they are ordered to satisfy (29) with \mathbb{S} replaced by $\lambda(H_m)$, and are used as nodes ζ_{j+1} in the Newton polynomials (28).

A comparison of the formulas (9) and (28) shows that Newton bases for Krylov subspaces can be generated by the recursion formula (9) with $\beta_{k+1} := \zeta_{k+1}$ for all k , where the ζ_{k+1} are Leja points for some set \mathbb{S} . The parameters γ_{k+1} vanish for all k due to the simple form of the recursion formula (28). The α_{k+1} are scaling factor chosen so that $\|z_{k+1}\| = 1$ for all k .

When the dimension of the Krylov subspace to be generated with a Newton polynomial basis equals the number of distinct eigenvalues of H_m , then all distinct eigenvalues are used as Leja points. This situation is different from the one considered by Leja [18], who assumed \mathbb{S} to contain infinitely many points. Therefore, the analysis of the conditioning of Newton bases in [4] is not applicable and, in particular, Newton bases generated in this manner may be quite ill-conditioned. Poor conditioning also can be a difficulty when the desired Krylov subspace is of larger dimension than the number of distinct elements of

$\lambda(H_m)$ and the Newton basis is determined by applying Leja ordered distinct points in $\lambda(H_m)$ in a periodic fashion. This approach, which is considered in [4], works fairly well for generating Newton bases for Krylov subspaces of small to moderate dimension; however, ill-conditioning may prevent the computation of bases for Krylov subspaces of high dimension.

This section discusses two approaches to associate sets \mathbb{S} containing infinitely many points with computed Ritz values of A , with the aim of enabling the generation of useful Krylov subspace bases in Newton form of fairly large dimension. The zeros ζ_{j+1} in (28) are chosen to be Leja points for \mathbb{S} .

We first describe the construction of convex sets \mathbb{S} . The Ritz values of A live in the field of values of A ,

$$\mathcal{F}(A) := \frac{z^*Az}{z^*z}, \quad z \in \mathbb{C}^n \setminus \{\mathbf{0}\},$$

a convex set whose shape can be important for the performance of iterative solution methods; see [10] for a discussion on the latter. This observation suggests the use of Krylov subspace bases that are well conditioned on $\mathcal{F}(A)$. However, $\mathcal{F}(A)$ generally is difficult to compute for large matrices. We therefore approximate $\mathcal{F}(A)$ by the convex hull of all computed Ritz values of A . This is the set \mathbb{S} .

Let H_{m_0} be the upper Hessenberg matrix determined by the computation with Algorithm 1.1 in Step 1 of Algorithm 4.1 below. We initialize \mathbb{S} to be $\text{co}(\lambda(H_{m_0}))$, the convex hull of $\lambda(H_{m_0})$. In Step 5 of Algorithm 4.1, new Ritz values of A are determined as eigenvalues of the matrix G_m . These Ritz values are used to update the available the set \mathbb{S} according to

$$\mathbb{S} := \text{co}(\mathbb{S} \cup \lambda(G_m)). \quad (30)$$

In order to reduce the computational effort to generate Leja points, we discretize the sets \mathbb{S} similarly as described in [2] and discard previously generated Leja points. The latter therefore do not influence the distribution of the new Leja points to be determined.

The set \mathbb{S} satisfies the conditions required in the analysis of Leja [18]. Moreover, the analysis in [26] on the conditioning of Newton polynomial bases with the zeros ζ_{j+1} chosen to be Leja points for \mathbb{S} is applicable. The conditioning of this basis can be related to the conditioning of the associated Krylov subspace basis similarly as in Section 3; see [4] for further details.

For some matrices large areas of $\mathcal{F}(A)$ do not contain any eigenvalues. It follows that a well-conditioned polynomial basis on $\mathcal{F}(A)$ may be poorly conditioned on $\lambda(A)$. We therefore also present an approach to construct a set \mathbb{S} , which lives in the interior of the convex hull of all computed Ritz values.

Let similarly as above H_{m_0} be the upper Hessenberg matrix generated in Step 1 of Algorithm 4.1. Let $\text{sp}(H_{m_0})$ denote the convex set formed by the spokes from the midpoint of $\lambda(H_{m_0})$ to the eigenvalues of H_{m_0} . We refer to $\text{sp}(\lambda(H_{m_0}))$ as a spoke set. The set \mathbb{S} is initialized to $\text{sp}(\lambda(H_{m_0}))$. Let G_m denote an upper Hessenberg matrix computed during Step 5 of Algorithm 4.1. Whenever a new matrix G_m is available, we update the set \mathbb{S} according to

$$\mathbb{S} := \mathbb{S} \cup \text{sp}(\lambda(G_m)). \quad (31)$$

Thus, \mathbb{S} is the union of spoke sets. When the set \mathbb{S} is updated, previously generated Leja points are discarded.

The following algorithm describes the computations with Krylov subspace bases of Newton form with the nodes ζ_{j+1} in (28) chosen to be Leja points for sets \mathbb{S} determined by (30) or (31).

Algorithm 4.1 *A Newton basis-GMRES method.*

Input: m_0 , m , \mathbf{x}_0 , $\mathbf{r}_0 := \mathbf{b} - A\mathbf{x}_0$, tolerance $\epsilon > 0$.

Output: approximate solution \mathbf{x}_j , such that $\|\mathbf{b} - A\mathbf{x}_j\| \leq \epsilon$.

1. Apply Algorithm 1.1 to determine a new approximate solution \mathbf{x}_1 , the associated residual error \mathbf{r}_1 , and the $m_0 \times m_0$ upper Hessenberg matrix H_{m_0} .
2. Compute the spectrum $\mathbb{E} := \lambda(H_{m_0})$, determine the smallest ellipse that contains $\lambda(H_{m_0})$, and let $\mathbb{S} := \text{co}(\lambda(H_m))$ or $\mathbb{S} := \text{sp}(\lambda(H_m))$.
3. for $j := 1, 2, \dots$ until $\|\mathbf{r}_j\| \leq \epsilon$ do
 4. Generate the Krylov subspace basis matrix Z_{m+1} , see (10), with columns

$$\mathbf{z}_\ell := \frac{\phi_\ell(A)\mathbf{r}_j}{\|\phi_\ell(A)\mathbf{r}_j\|}, \quad \ell = 0, 1, \dots, m,$$

using a recursion of the form (28), where the ϕ_ℓ are Newton polynomials determined by m Leja points ζ_k for \mathbb{S} . The recursion coefficients determine the nontrivial entries of the bidiagonal matrix \hat{T}_m , see (11), with $\gamma_k = 0$.

5. Compute the QR factorization $Z_{m+1} = W_{m+1}R_{m+1}$, the upper Hessenberg

matrix \hat{G}_m in (15), and the leading $m \times m$ submatrix G_m of \hat{G}_m .

6. Solve

$$\min_{\mathbf{y} \in \mathbb{C}^m} \|\|\mathbf{r}_j\|e_1 - R_{m+1}\hat{T}_m\mathbf{y}\|$$

for \mathbf{y}_j ; cf. (16). Let $\mathbf{x}_{j+1} := \mathbf{x}_j + Z_m\mathbf{y}_j$; $\mathbf{r}_{j+1} := \mathbf{b} - A\mathbf{x}_{j+1}$;

7. Compute the spectrum $\lambda(G_m)$ and update \mathbb{S} according to (30) or (31).

end j . □

5 Computed examples

We determine the conditioning of a few polynomial bases. The computed Chebyshev polynomials are associated with the ellipse of smallest area containing all available Ritz values. Other ellipses also could be used; see, e.g., [1]. The ellipse does not have to be determined with high accuracy.

The matrices A in the computed examples are from Matrix Market [23], see Table 1, and the right-hand side vector in (1) is $\mathbf{b} = A\mathbf{e}$, where $\mathbf{e} = [1, 1, \dots, 1]^T$. We have chosen examples for which some polynomial bases are fairly well conditioned, and examples for which all of the polynomial bases considered are quite ill-conditioned. This illustrates both the possibilities and limitation of the polynomial bases discussed. The Krylov subspace bases generated can be applied in GMRES, to the computation of a few eigenvalues and associated eigenvectors of the matrix, and to the evaluation of matrix functions, provided that the basis is not too ill-conditioned. We remark that for the latter applications, it may be attractive to use Chebyshev or Newton bases to expand an available orthonormal Krylov subspace base by orthogonalizing the Chebyshev or Newton bases against the already available orthonormal basis.

We display the condition number of several Krylov subspace bases as a function of the dimension of the subspace, without discussing particular applications. All computations were carried out in MATLAB with about 16 significant decimal digits.

Table 1: Test matrices from Matrix Market. The properties “H” and “nH” stand for Hermitian and non-Hermitian, respectively.

| Example | Matrix | Order | Property | Application |
|---------|----------|-------|----------|-------------------------------------|
| 5.1 | E20R0000 | 4241 | H | Driven cavity, 20x20 elements, Re=0 |
| 5.2 | PLAT1919 | 1919 | H | Platzman’s oceanographic model |
| 5.3 | GRE1107 | 1107 | nH | Simulation of computer system |
| 5.4 | FS 680 1 | 680 | nH | Chemical kinetics problem |

Example 5.1. This example determines Krylov subspace bases for the matrix E20R0000 from Matrix Market; see Table 1. We first apply 10 steps of the Arnoldi process to compute the decomposition (4) with $m = 10$. The eigenvalues of the upper Hessenberg matrix H_m in (4) are the Ritz values shown in Figure 1 (top). Since the matrix is Hermitian, the Ritz values lie on the real axis.

The condition number of the Newton Krylov subspace basis defined by the Leja ordered Ritz values is depicted by the blue curve marked with * in Figure 1 (bottom). The horizontal axis shows the dimension of the basis. The red continuous curve shows the condition number of the scaled power basis as a function of the dimension of the basis. The condition number is seen to grow rapidly and exponentially with the dimension of the Krylov subspace.

The extreme Ritz values define an interval for which we compute 30 Leja points. The condition number of the Newton Krylov subspace basis determined by these Leja points is displayed by the brown dotted graph marked with Δ . The condition number can be seen to grow fairly slowly with the dimension of the basis. The Newton bases are much better conditioned than the scaled power bases for Krylov subspaces of the same dimensions.

Finally, the black dash-dotted graph of Figure 1 (bottom) displays the condition number of Chebyshev polynomial basis. The polynomials are for the interval between the extreme Ritz values. The conditioning of this basis is slightly better than for the other bases considered. \square

Example 5.2. We compute Krylov subspace bases for the matrix PLAT1919 from Matrix Market; see Table 1. Figure 2 is analogous to Figure 1. The relative performance of the Krylov subspace bases is similar to Example 5.1. However, the condition number for all bases grows somewhat faster than in Example 5.1. The Newton basis determined by Leja points yields bases with the smallest condition number. \square

Example 5.3. This example illustrates the conditioning of Krylov subspace bases for the non-Hermitian matrix GRE1107; see Table 1. Figure 3 (top) displays the 10 computed Ritz values (blue o), 30 Leja points allocated on a spoke set determined by the Ritz values, as described in Section 4, and the ellipse of smallest area, containing all Ritz values. This is the ellipse $\mathcal{E}(f_1, f_2, r)$ of Section 3. The Chebyshev polynomial basis generated is associated with this ellipse.

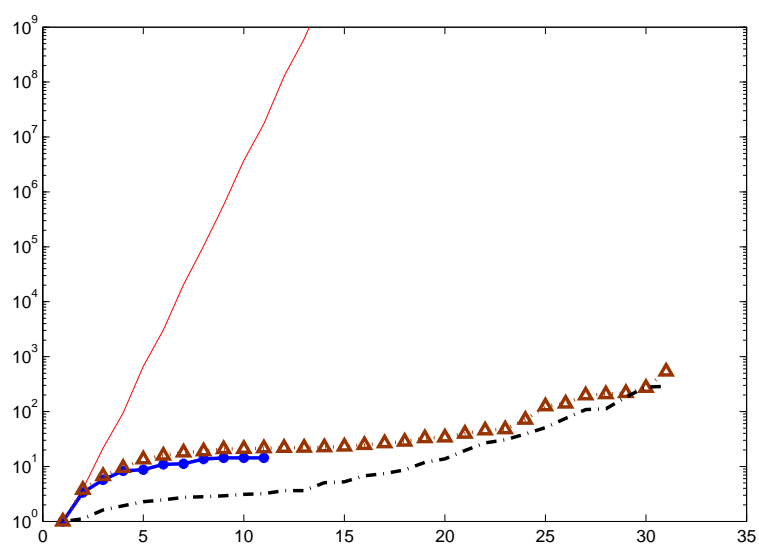
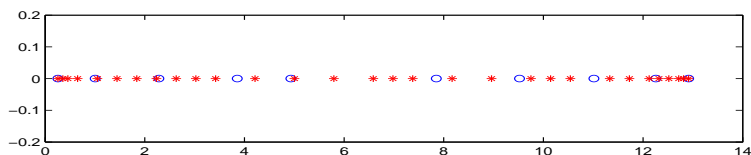


Figure 1: Example 5.1. Top: Ritz values of matrix (blue o) and Leja points (red *). Bottom: Condition number as a function of the dimension of the Krylov basis. Scaled power basis (red continuous curve), Newton basis defined by Ritz values (blue curve with *), Newton basis defined by Leja points (brown dotted graph with Δ), Chebyshev polynomial basis (black dash-dotted graph).

Figure 3 (bottom) illustrates the growth of the condition number of the Krylov subspace bases generated. The conditioning of the power bases is the worst and for Newton bases determined by Leja points the best for large degrees.

We found Newton bases for a spoke set and union of spoke sets (31) for many matrices were better conditioned than Newton bases for the convex hull of available Ritz values (30). Therefore, we only report the condition number for the former. \square

Example 5.4. We use the matrix FS 680 1 from Matrix Market scaled by 10^{-11} . The results are displayed by Figure 4, which is analogous to Figure 3. For this matrix the condition numbers for all polynomial bases considered grow

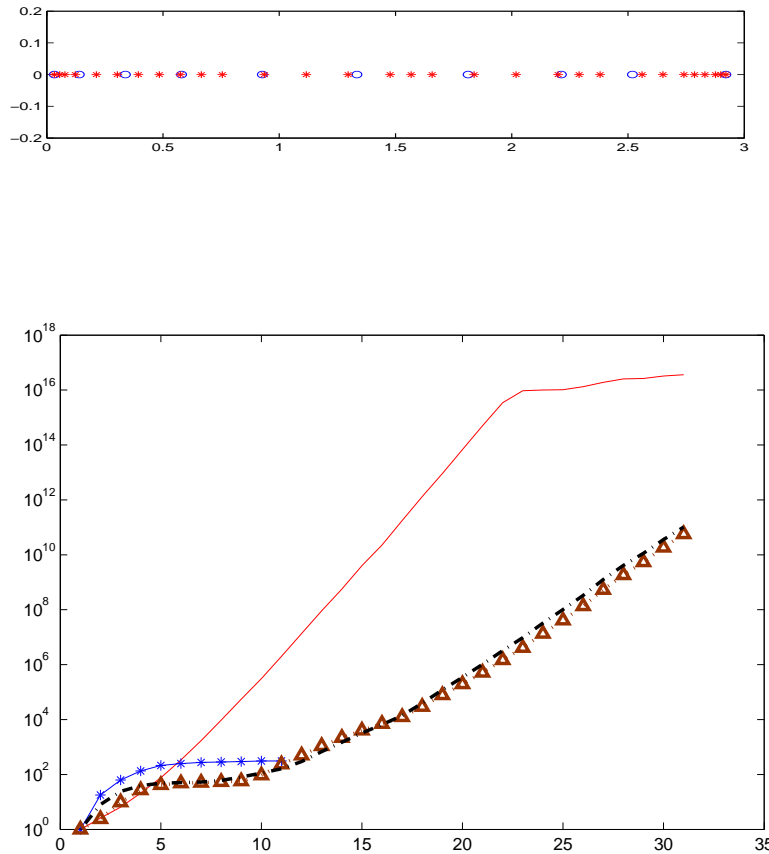


Figure 2: Example 5.2. Top: Ritz values of matrix (blue \circ) and Leja points (red $*$). Bottom: Condition number as a function of the dimension of the Krylov basis. Scaled power basis (red continuous curve), Newton basis defined by Ritz values (blue curve with $*$), Newton basis defined by Leja points (brown dotted graph with Δ), Chebyshev polynomial basis (black dash-dotted graph).

fairly rapidly. Nevertheless, Chebyshev or Newton polynomial bases may be used in Algorithms 3.2 and 4.1 if m is chosen sufficiently small, say, $m \leq 15$. \square

6 Conclusion

The computed examples of the previous section, as well as many other computed examples, show that the use of Chebyshev or Newton polynomial bases may be viable alternatives to the Arnoldi process.

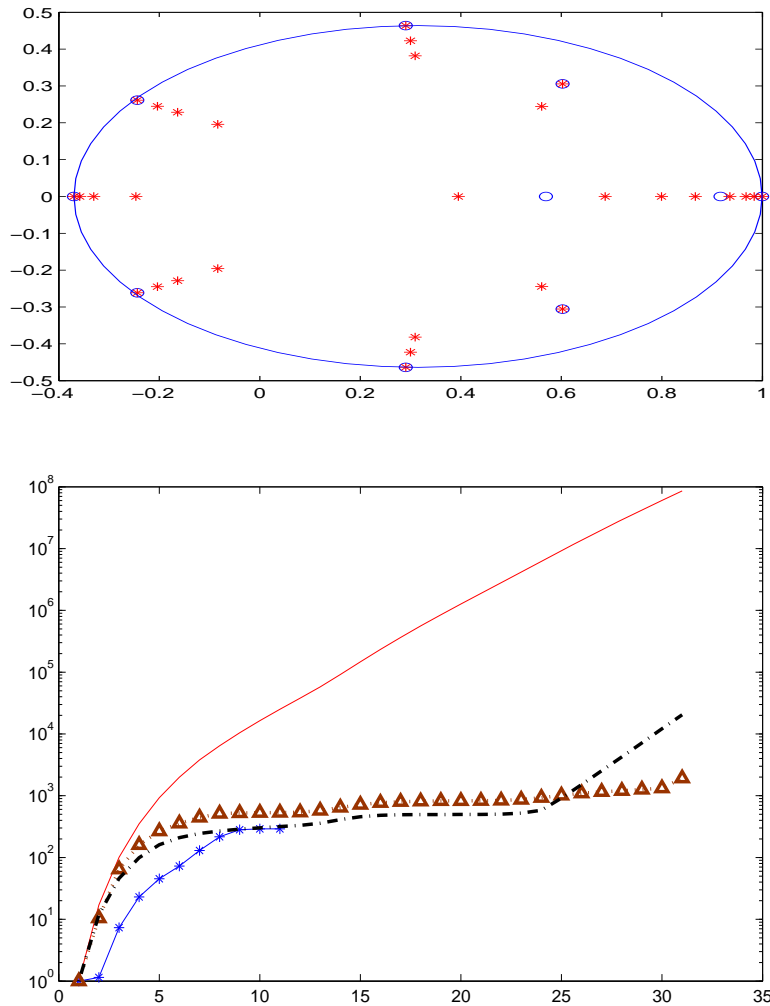


Figure 3: Example 5.3. Top: Ritz values of matrix (blue o) and Leja points (red *). The Chebyshev polynomials generated are for the interval between the foci of the displayed ellipse. Bottom: Condition number as a function of the dimension of the Krylov basis. Scaled power basis (red continuous curve), Newton basis defined by Ritz values (blue curve with *), Newton basis defined by Leja points (brown dotted graph with Δ), Chebyshev polynomial basis (black dash-dotted graph).

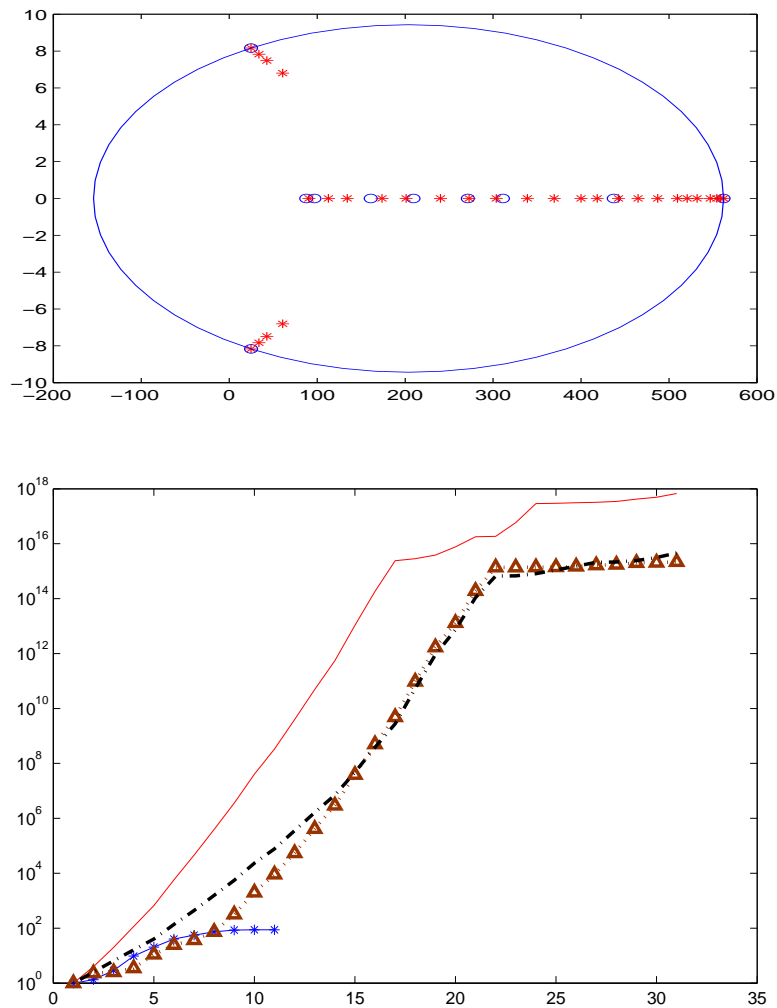


Figure 4: Example 5.4. Top: Ritz values of matrix (blue o) and Leja points (red *). The Chebyshev polynomials generated are for the interval between the foci of the displayed ellipse. Bottom: Condition number as a function of the dimension of the Krylov basis. Scaled power basis (red continuous curve), Newton basis defined by Ritz values (blue curve with *), Newton basis defined by Leja points (brown dotted graph with Δ), Chebyshev polynomial basis (black dash-dotted graph).

References

- [1] I. Al-Subaihi and G. A. Watson, Fitting parametric curves and surfaces by ℓ_∞ distance regression, *BIT*, 45 (2005), pp. 443–461.
- [2] J. Baglama, D. Calvetti, and L. Reichel, Fast Leja points, *Electron. Trans. Numer. Anal.*, 7 (1998), pp. 124–140.
- [3] Z. Bai, D. Hu, and L. Reichel, Implementation of GMRES method using QR factorization, in *Proceedings of the Fifth SIAM Conference on Parallel Processing for Scientific Computing*, eds. J. Dongarra, K. Kennedy, P. Messina, D. C. Sorensen, and R. G. Voigt, SIAM, Philadelphia, 1992, pp. 84–91.
- [4] Z. Bai, D. Hu, and L. Reichel, A Newton basis GMRES implementation, *IMA J. Numer. Anal.*, 14 (1994), pp. 563–581.
- [5] B. Beckermann and L. Reichel, Error estimation and evaluation of matrix functions via the Faber transform, *SIAM J. Numer. Anal.*, in press
- [6] M. Bellalij, Y. Saad, and H. Sadok, On the convergence of the Arnoldi process for eigenvalue problems, Report umsi-2007-12, Minnesota Supercomputer Institute, University of Minnesota, Minneapolis, MN, 2007.
- [7] D. Calvetti, G. H. Golub, and L. Reichel, An adaptive Chebyshev iterative method for nonsymmetric linear systems based on modified moments, *Numer. Math.*, 67 (1994), pp. 21–40.
- [8] D. Calvetti, J. Petersen, and L. Reichel, A parallel implementation of the GMRES algorithm, in *Numerical Linear Algebra*, eds. L. Reichel, A. Rutan, and R. S. Varga, de Gruyter, Berlin, 1993, pp. 31–46.
- [9] P. J. Davis, *Interpolation and Approximation*, Dover, New York, 1975.
- [10] M. Eiermann, Fields of values and iterative methods, *Linear Algebra Appl.*, 180 (1993), pp. 167–198.
- [11] H. C. Elman, Y. Saad, and P. E. Saylor, A hybrid Chebyshev Krylov subspace algorithm for solving nonsymmetric systems of linear equations, *SIAM J. Sci. Stat. Comput.*, 7 (1986), pp. 840–855.
- [12] J. Erhel, A parallel GMRES version for general sparse matrices, *Electron. Trans. Numer. Anal.*, 3 (1995), pp. 160–176.
- [13] W. Gautschi, The condition of orthogonal polynomials, *Math. Comp.*, 26 (1972), pp. 923–924.
- [14] W. Gautschi, Condition of polynomials in power form, *Math. Comp.*, 33 (1979), pp. 343–352.
- [15] M. Gutknecht and S. Röllin, The Chebyshev iteration revisited, *Parallel Computing*, 28 (2002), pp. 263–283.
- [16] W. D. Joubert and G. F. Carey, Parallelizable restarted iterative methods for nonsymmetric linear systems. Part I: Theory, *Intern. J. Computer Math.*, 44 (1992), pp. 243–267.

- [17] W. D. Joubert and G. F. Carey, Parallelizable restarted iterative methods for nonsymmetric linear systems. Part II: Parallel implementation, *Intern. J. Computer Math.*, 44 (1992), pp. 269–290.
- [18] F. Leja, Sur certaines suites liées aux ensemble plan et leur application à la representation conforme, *Ann. Polon. Math.*, 4 (1957), pp. 8–13.
- [19] T. A. Manteuffel, The Chebyshev iteration for nonsymmetric linear systems, *Numer. Math.*, 28 (1977), pp. 307–327.
- [20] T. A. Manteuffel, Adaptive procedure for estimation of parameters for the nonsymmetric Chebyshev iteration, *Numer. Math.*, 31 (1978), pp. 187–208.
- [21] T. A. Manteuffel and G. Starke, On hybrid iterative methods for nonsymmetric systems of linear equations, *Numer. Math.*, 73 (1996), pp. 489–506.
- [22] J. C. Mason and D. C. Handscomb, *Chebyshev Polynomials*, CRC Press, 2003.
- [23] Matrix Market. Web address: <http://math.nist.gov/MatrixMarket/>
- [24] N. M. Nachtigal, L. Reichel, and L. N. Trefethen, A hybrid GMRES algorithm for nonsymmetric linear systems, *SIAM J. Matrix Anal. Appl.*, 13 (1992), pp. 796–825.
- [25] L. Reichel, On polynomial approximation in the complex plane with application to conformal mapping, *Math. Comp.*, 44 (1985), pp. 425–433.
- [26] L. Reichel, Newton interpolation at Leja points, *BIT*, 30 (1990), pp. 332–346.
- [27] Y. Saad, Least squares polynomials in the complex plane and their use for solving nonsymmetric linear systems, *SIAM J. Numer. Anal.*, 24 (1987), pp. 155–169.
- [28] Y. Saad, Analysis of some Krylov subspace approximations to the matrix exponential operator, *SIAM J. Numer. Anal.*, 29 (1992), pp. 209–228.
- [29] Y. Saad, *Iterative Methods for Sparse Linear Systems*, 2nd ed., SIAM, Philadelphia, 2003.
- [30] Y. Saad and M. H. Schultz, GMRES: a generalized minimal residual algorithm for solving nonsymmetric linear systems, *SIAM J. Sci. Stat. Comput.*, 7 (1986), pp. 856–869.
- [31] R. B. Sidje, Alternatives to parallel Krylov subspace basis computation, *Numer. Linear Algebra Appl.*, 4 (1997), pp. 305–331.
- [32] G. Starke and R. S. Varga, A hybrid Arnoldi-Faber iterative method for nonsymmetric systems of linear equations, *Numer. Math.*, 64 (1993), pp. 213–240.
- [33] G. W. Stewart, *Matrix Algorithms, Vol. II: Eigensystems*, SIAM, Philadelphia, 2001.

-
- [34] R. Taylor and V. Totik, Lebesgue constants for Leja points, *IMA J. Numer. Anal.*, to appear.
 - [35] K.-C. Toh and L. N. Trefethen, Calculation of pseudospectra by the Arnoldi iteration, *SIAM J. Sci. Comput.*, 17 (1996), pp. 1–15.
 - [36] T. G. Wright and L. N. Trefethen, Large-scale computation of pseudospectra using ARPACK and eigs, *SIAM J. Sci. Comput.*, 23 (2001), pp. 591–605.



Centre de recherche INRIA Rennes – Bretagne Atlantique
IRISA, Campus universitaire de Beaulieu - 35042 Rennes Cedex (France)

Centre de recherche INRIA Bordeaux – Sud Ouest : Domaine Universitaire - 351, cours de la Libération - 33405 Talence Cedex
Centre de recherche INRIA Grenoble – Rhône-Alpes : 655, avenue de l'Europe - 38334 Montbonnot Saint-Ismier
Centre de recherche INRIA Lille – Nord Europe : Parc Scientifique de la Haute Borne - 40, avenue Halley - 59650 Villeneuve d'Ascq
Centre de recherche INRIA Nancy – Grand Est : LORIA, Technopôle de Nancy-Brabois - Campus scientifique
615, rue du Jardin Botanique - BP 101 - 54602 Villers-lès-Nancy Cedex
Centre de recherche INRIA Paris – Rocquencourt : Domaine de Voluceau - Rocquencourt - BP 105 - 78153 Le Chesnay Cedex
Centre de recherche INRIA Saclay – Île-de-France : Parc Orsay Université - ZAC des Vignes : 4, rue Jacques Monod - 91893 Orsay Cedex
Centre de recherche INRIA Sophia Antipolis – Méditerranée : 2004, route des Lucioles - BP 93 - 06902 Sophia Antipolis Cedex

Éditeur
INRIA - Domaine de Voluceau - Rocquencourt, BP 105 - 78153 Le Chesnay Cedex (France)
<http://www.inria.fr>
ISSN 0249-6399