



HAL
open science

Influence of different convection parameterisations in a GCM

H. Tost, P. Jöckel, J. Lelieveld

► **To cite this version:**

H. Tost, P. Jöckel, J. Lelieveld. Influence of different convection parameterisations in a GCM. Atmospheric Chemistry and Physics Discussions, 2006, 6 (5), pp.9213-9257. hal-00302140

HAL Id: hal-00302140

<https://hal.science/hal-00302140>

Submitted on 18 Jun 2008

HAL is a multi-disciplinary open access archive for the deposit and dissemination of scientific research documents, whether they are published or not. The documents may come from teaching and research institutions in France or abroad, or from public or private research centers.

L'archive ouverte pluridisciplinaire **HAL**, est destinée au dépôt et à la diffusion de documents scientifiques de niveau recherche, publiés ou non, émanant des établissements d'enseignement et de recherche français ou étrangers, des laboratoires publics ou privés.

Global convection
modelling

H. Tost et al.

Influence of different convection parameterisations in a GCM

H. Tost, P. Jöckel, and J. Lelieveld

Atmospheric Chemistry Department, Max-Planck Institute of Chemistry, P.O. Box 3060, 55020
Mainz, Germany

Received: 17 August 2006 – Accepted: 30 August 2006 – Published: 26 September 2006

Correspondence to: H. Tost (tost@mpch-mainz.mpg.de)

Title Page

Abstract

Introduction

Conclusions

References

Tables

Figures

◀

▶

◀

▶

Back

Close

Full Screen / Esc

Printer-friendly Version

Interactive Discussion

EGU

Abstract

In global models of the atmosphere convection is parameterised, since the typical scale of this process is smaller than the model resolution. Here we address some of the uncertainties arising from the selection of different algorithms to simulate this process.

5 Four different parameterisations for atmospheric convection, all used in state-of-the-art models, are implemented in the model system ECHAM5/MESSy for a consistent inter-comparison and evaluation against observations. Relatively large differences are found in the simulated precipitation patterns, whereas simulated water vapour columns distributions are quite similar and close to observations. The effects on the hydrological cycle and on the simulated meteorological conditions are discussed.

1 Introduction

The adequate treatment of convection in computer models of the Earth's atmosphere is one of the major uncertainties in weather and climate simulations (Randall et al., 2003). Convection is crucial for the stabilisation of the atmosphere, and for the vertical redistribution of energy, water vapour and chemical species throughout the troposphere. It characterises large circulation systems (e.g., Hadley and Walker circulation) and indirectly influences the dynamics of the stratosphere through the triggering of gravity waves. Within the Inner Tropical Convergence Zone (ITCZ) convection largely determines the daily weather. Only in high resolution models with grid sizes of about 1 km×1 km it is possible to resolve individual clouds, while in all other models, especially in contemporary general circulation models (GCMs), convection must be described with the help of parameterisations. Considerable efforts in parameterising convection have been undertaken in the last decades (Arakawa, 2004, and references therein). Consequently, a large variety of convection schemes is available and applied in GCMs. They are often based on different assumptions, (e.g. Arakawa and Schubert, 1974; Kuo, 1974; Tiedtke, 1989; Hack, 1994; Zhang and McFarlane, 1995;

Title Page

Abstract

Introduction

Conclusions

References

Tables

Figures

◀

▶

◀

▶

Back

Close

Full Screen / Esc

Printer-friendly Version

Interactive Discussion

Emanuel and Zivkovic-Rothman, 1999; Donner et al., 2001; Bechtold et al., 2001; Lin and Neelin, 2002; Noper and Graf, 2005), each of them having strengths and weaknesses (Arakawa, 2004). The so-called 'super-parameterisation' approach (Grabowski and Smolarkiewicz, 1999; Grabowski, 2004) might overcome some of the weaknesses (Randall et al., 2003), but since significantly more computational effort is required, hence application in atmospheric chemistry general circulation models (AC-GCM) is not feasible. It is important to analyse the influence of convection schemes on the simulated climate system. Inter-comparisons of convection schemes in the past have mostly been accomplished with single column models (e.g. Ghan et al., 2000; Xie et al., 2002) and focused on specific conditions. According to Randall et al. (1996) this has the advantage of limited amounts of data (for both models and observations) to be compared and an easier identification and separation of individual effects. However, single column studies provide only limited information on the impact of a convection scheme in a GCM, in which basically all atmospheric conditions occur. Anyhow, convection parameterisations mainly address the influence of the convective activity on the larger circulation, while associated processes like mass-balancing subsidence are described in less detail in most of the present parameterisations. In reality convective events can be organised into larger systems (mesoscale convective systems) (Houze, jr., 2004). This self-organisation cannot be simulated with most of the present convection parameterisations, even though some approaches to include such effects have already been undertaken (e.g. Donner et al., 2001; Noper and Graf, 2005). Only few previous comparisons of convection schemes focusing on the global scale impact have been accomplished. A study by Lee et al. (2003) for idealised (aqua-planet) and realistic conditions concluded large differences between the individual parameterisations. Mahowald et al. (1997) investigated the influence of different convection schemes on tracer transport in a chemistry transport model (CTM), although they used different input data for their simulations. Therefore the discrepancies between the different results cannot solely be attributed to the influence of the convection parameterisation. Furthermore the influences of the selected scheme on the dynamics and climate cannot be addressed

**Global convection
modelling**

H. Tost et al.

Title Page

Abstract

Introduction

Conclusions

References

Tables

Figures

◀

▶

◀

▶

Back

Close

Full Screen / Esc

Printer-friendly Version

Interactive Discussion

**Global convection
modelling**

H. Tost et al.

Title Page

Abstract

Introduction

Conclusions

References

Tables

Figures

◀

▶

◀

▶

Back

Close

Full Screen / Esc

Printer-friendly Version

Interactive Discussion

in a transport model driven by offline-computed meteorological data. In this study four different convection parameterisations are implemented in a GCM, accounting for feedbacks on the simulated meteorology. In Sect. 2 the model and the convection schemes are briefly described; an overview about the simulation setup is given in Sect. 3. The results in Sect. 4 are subdivided into two parts: in 4.1 we present the influences on the hydrological cycle, and in 4.2 we analyse the impacts on the simulated meteorology. Our conclusions are given in Sect. 5. The main focus of this study is an analysis of the influences of the convection schemes on the simulated meteorological conditions of present-day climate and the hydrological cycle. An accurate description of the water distribution is important for many processes in the atmosphere including the chemistry. An accurate chemical weather forecast is only possible if the hydrological cycle is well represented by the model. In comparison with climate modelling with a focus on statistical results, in atmospheric chemistry modelling it is particularly important to accurately simulate the seasonal precipitation and the inter-annual variability.

2 Model description

2.1 Atmospheric chemistry GCM

The AC-GCM ECHAM5/MESSy system combines the GCM ECHAM5 (Roeckner et al., 2006; Hagemann et al., 2006; Wild and Roeckner, 2006) (version 5.3.01) and MESSy (version 1.1), the Modular Earth Submodel System (Jöckel et al., 2005). ECHAM5 calculates the atmospheric flow in spectral representation with the prognostic variables vorticity, divergence, temperature, the logarithm of the surface pressure, specific humidity, cloud water, and cloud ice. The processes of radiation and cloud microphysics are parameterised. In the vertical a hybrid pressure coordinate system is applied. Advection is calculated with the Lin and Rood (1996) algorithm. The processes of large-scale condensation (cloud and precipitation formation) are calculated based on work of Lohmann and Roeckner (1996) and Tompkins (2002). The detailed descrip-

tion of the physical processes can be found in the ECHAM5 documentation (Roeckner et al., 2003, 2004). MESSy is described by Jöckel et al. (2005), and the first application of ECHAM5/MESSy as AC-GCM including a more detailed model description is presented in Jöckel et al. (2006). At present MESSy contains submodels for atmospheric chemistry, transport, their feedback on the meteorology, and diagnostic tools.

2.2 Convection parameterisations

ECHAM5 includes the convection parameterisation of Tiedtke (1989) in three different configurations:

- The Tiedtke (1989) scheme with modifications by Nordeng (1994) (further denoted as T1). This scheme is used as the default convection parameterisation.
- The original Tiedtke (1989) scheme without any modifications (denoted as T2).
- The original Tiedtke (1989) scheme with a so-called hybrid closure (further denoted as T3).

For this study, these schemes have been extracted from ECHAM5, recoded according to the MESSy standard and equipped with a flexible interface, and three additional convection schemes have been included via the same interface:

- the convection parameterisation of the operational ECMWF model (IFS cycle 29r1b, further denoted as EC) (Bechtold et al., 2004, and references therein), which is a further development of the Tiedtke (1989) scheme;
- the Zhang-McFarlane-Hack scheme (Zhang and McFarlane, 1995; Hack, 1994) (ZH) as applied in the MATCH model (Rasch et al., 1997; Lawrence et al., 1999);
- the scheme of Bechtold et al. (2001), further denoted as B.

Title Page

Abstract

Introduction

Conclusions

References

Tables

Figures

◀

▶

◀

▶

Back

Close

Full Screen / Esc

Printer-friendly Version

Interactive Discussion

All convection parameterisations have been implemented in the modularised approach of MESSy. The interface collects the required input data from the base model (GCM) and returns the results of the convection calculations back to the GCM.

Although (in theory) several convection schemes can be run in parallel, only one at the same time can be coupled back to the model physics and influence the simulated meteorology.

Since the individual convection schemes are well documented in detail in the literature, here we only briefly review the major differences. All schemes follow the mass-flux approach (e.g. [Arakawa and Schubert, 1974](#)), which describes convection by an ensemble of subgrid-scale clouds modifying the equations for the large-scale budget of the environmental dry static energy \bar{s} and the specific humidity \bar{q} ($s=c_p T+gz$, accounting for the enthalpy (specific heat capacity c_p times temperature T) and the potential energy (gravitational acceleration g times altitude z)). The bar denotes the average of a state variable.

A summary of the major differences referring to some of the key processes of the parameterisations is listed in Table 1. The closure assumption for deep convection of all schemes is based on the convective available potential energy (CAPE), except for the original Tiedtke scheme in which moisture convergence is assumed. However, the formulation of the CAPE differs slightly, e.g. by using the virtual temperature (T1, EC), the virtual potential temperature (ZH), the equivalent potential temperature and taking into account the liquid water fraction for the CAPE calculation (B). The entrainment is mainly turbulent, while in the [Tiedtke \(1989\)](#) scheme organised entrainment is also assumed. All schemes use different entrainment parameters.

The closure assumption for the shallow convection is quite different, ranging from moisture convergence (T) or CAPE (B) to more physical process descriptions, e.g., using boundary layer parameters for the EC scheme ([Grant and Brown, 1999](#)).

A further difference, which appeared to be important in convection parameterisation comparisons (e.g. [Xie et al., 2002](#)), is the trigger criterion, ranging from constant temperature differences (T1, T2, T3, ZH) to approaches which use calculated or estimated

**Global convection
modelling**

H. Tost et al.

Title Page

Abstract

Introduction

Conclusions

References

Tables

Figures

◀

▶

◀

▶

Back

Close

Full Screen / Esc

Printer-friendly Version

Interactive Discussion

updraft velocities (EC, B).

Furthermore, the simplified microphysics description including condensation and precipitation formation differs widely.

Table 1 is far from being complete; however, it indicates that even though the same basic approach is applied, the schemes are substantially different. For a more detailed description of the convection schemes we refer to the original articles.

3 Simulation setup

Several simulations with the different convection parameterisations have been performed at a model resolution of T42 with 31 vertical levels up to 10 hPa. The sea surface temperature (SST) has been prescribed with data from the AMIP database. Climatological monthly average SST (1995–2000) is used for the simulated years.

The simulation period spans 6 years after 3 months of spin-up.

The initial state is derived from ERA40 data (October 1994). For the data analysis the three months spin-up are ignored. To address the response of the simulated meteorology no data assimilation has been applied. However, consequently this simulation setup does not take into account the actual, specific meteorology of the simulated years, and the observations cannot be expected to be completely matched by the model results.

For all simulations the same executable is used, switching between the different convection parameterisations via a FORTRAN90 namelist. The simulations performed for this study are listed in Table 2.

4 Results

It is important to note that no tuning of the model system has been applied, i.e., parameters of the radiation routines which are coupled to the convection parameterisation

Title Page

Abstract

Introduction

Conclusions

References

Tables

Figures

◀

▶

◀

▶

Back

Close

Full Screen / Esc

Printer-friendly Version

Interactive Discussion

(e.g., via the simulated convective cloud top height) are the same in all simulations. Nevertheless, the alternative convection schemes modify the distribution of the coupling parameters compared to the default convection scheme. This aspect and the altered hydrological cycle affects the simulated meteorology and can force the system into another state. However, a drift in temperature, humidity, precipitation, soil moisture or the radiation budgets has not been detected in any of the simulations of this study.

4.1 Hydrological cycle

In this section the hydrological cycle, including precipitation, the moisture content of the atmosphere, and the evaporation is analysed. The first two quantities are compared with observations from global datasets.

4.1.1 Precipitation

Since it is difficult to “observe” the precipitation that is produced by convection alone, and because in the model the convection scheme interacts with the large-scale cloud scheme, the total precipitation fluxes consisting of large-scale and convective rain and snow are compared.

Observational dataset

The results of the individual model simulations are compared with data from the Global Precipitation Climatology Project (GPCP).

This dataset has been compiled from observations from rain-gauges and satellite data. It is described in detail by [Huffman et al. \(1997\)](#). The applied version 2 of the dataset is presented by [Adler et al. \(2003\)](#). For comparison, other observational datasets have been analysed, i.e. the CMAP ([Xie and Arkin, 1997](#)) and the HOAPS ([Grassl et al., 2000](#)) database. Since the CMAP data also contains modelling results and the HOAPS data lacks a full global coverage (data only over the oceans), the

Title Page

Abstract

Introduction

Conclusions

References

Tables

Figures

◀

▶

◀

▶

Back

Close

Full Screen / Esc

Printer-friendly Version

Interactive Discussion

GPCP data has been selected for a detailed comparison of the model results with observations. The differences between the individual datasets are much smaller than the differences to the model results and the deviations of the individual simulations.

Since there is some inter-annual variability, especially due to the El Niño event in 1997/1998, which is not captured accurately with climatological SSTs, only the multi-year average values of the years 1995 to 2000 are used for comparison with the simulation results.

Zonal average

In Fig. 1 the seasonal cycle of the zonal average precipitation is shown.

For all seasons the overall shape of the simulated precipitation patterns agrees well with the observations, for example the maximum precipitation in the tropics, two secondary maxima in the Northern and Southern Hemispheric storm tracks, and minima in the subtropics and the polar regions.

However, the absolute values of the maxima differ significantly, partly overestimating precipitation by up to 20%–30% (T1, B2), whereas others capture the absolute value within $\pm 5\%$ (ZH, ZHW) or underestimate the observed maximum by up to 20% (EC, EC2).

For boreal winter all simulations show a minimum in the Southern Hemisphere around 30° S which is less distinct in the observations. The maximum in the tropics shows a double-peaked shape in the observations as well as in most of the simulations (not T1, ZH, ZHW). However, in the observations the southern peak is more pronounced, whereas in most of the simulations the Northern maximum is higher.

T1 significantly overestimates the maximum and it is much broader compared to most of the other simulations. The Northern Hemisphere is captured reasonably well with only small differences between the specific simulations.

For boreal spring again the largest differences occur in the tropics. While EC and EC2 both underestimate the absolute zonal average value, T1, T2, T3, B1, and B2 overestimate it, partly by more than 30%. ZH and ZHW perform best for the zonal av-

Title Page

Abstract

Introduction

Conclusions

References

Tables

Figures

◀

▶

◀

▶

Back

Close

Full Screen / Esc

Printer-friendly Version

Interactive Discussion

erage. Between 35° N and 70° N the simulated values differ substantially, being higher than the observed values north of 40° N. The EC, EC2, ZH and ZHW simulations fail to capture this secondary maximum in the Northern storm tracks at around 38° N, though calculate it further north.

5 For boreal summer the differences are most pronounced, both in the tropics and in the extra-tropics. First, all simulations overestimate the secondary maximum in the southern hemispheric storm tracks, and also in the Northern Hemisphere a similar feature occurs. The absolute values in the tropics are strongly overestimated by the Tiedtke and the Bechtold simulations. On the other hand the ECMWF scheme and the Zhang-McFarlane-Hack scheme tend to underestimate the maximum values in the ITCZ. Most simulations produce a precipitation peak around 30° N. This is related to the steep orography of the Himalaya and the Tibetan plateau, as can be seen in Fig. 2, for which the rainfall is substantially overestimated.

10 For boreal autumn the situation is similar to the spring. The southern storm tracks maximum is located too far north in all simulations, similar to that in the Northern Hemisphere. Another difference is that in most simulations (not T1 and ZHW) high precipitation values are calculated around 5° S, which are not observed. T1 substantially overestimates the precipitation in the tropics.

Annual average

20 The observed and simulated annual average horizontal global precipitation distribution is analysed in Fig. 2. As indicated by Fig. 1 the main rainfall patterns are simulated in agreement with the observations. However, in some simulations significant regional deviations from the observed values occur. Since the differences in the spatial distribution between EC and EC2, and B1 and B2, respectively, are small, only one of each group is shown here, namely EC and B2.

25 All simulations overestimate the precipitation over the continents in the tropics and in the southern storm tracks. Except for the EC simulations, all convection schemes have a severe problem in the Himalaya/Tibet region (mainly during summer, cf. Fig. 1). This

Global convection modelling

H. Tost et al.

Title Page

Abstract

Introduction

Conclusions

References

Tables

Figures

◀

▶

◀

▶

Back

Close

Full Screen / Esc

Printer-friendly Version

Interactive Discussion

has also been identified during the evaluation of the hydrological cycle of the ECHAM5 model (Hagemann et al., 2006) and has been associated with problems arising from steep orography. A similar problem occurs over southern South America, where the steep mountains of Patagonia lead to a high simulated precipitation rate which is not observed.

And finally, all simulations underestimate precipitation in the central Atlantic ITCZ.

The small modifications of T1 compared to T2 and T3 result in slightly different precipitation patterns. The regions with the largest deviations from the observations are similar, i.e., a substantial overestimation of precipitation over the warm pool and the South Pacific Convergence Zone (SPCZ), west of the northern part of South America and in the continental westward outflow into the Pacific ITCZ, over Central Africa, and Tibet. The large amount of precipitation in these regions leads to the overestimation in the zonal averages shown in Fig. 1.

The largest overestimation in T1 is north and east of Indonesia, while in T2 and T3 it is shifted westward over land, although the precipitation over Thailand, Vietnam, etc. is underestimated.

In the Northern Hemispheric mid-latitudes the differences to the observations are only small in all Tiedtke simulations, except for the northern Pacific where T1 only slightly, but T2 and T3 significantly underestimate the average rainfall.

The differences between T1 and T2 can be related mainly to the different closure assumption (CAPE versus moisture convergence) and the different entrainment formulations. Most likely the different closure assumption causes the shifted precipitation patterns, since the entrainment formulation mainly affects the height of the convective clouds, whereas the closure determines the overall strength of the convective events. The other processes are identical between the T1 and T2 simulation.

The EC simulations are characterised by overall smaller differences to the observations. Some higher values occur in the Central Pacific (ITCZ, SPCZ), north of Madagascar, and in the southern storm tracks. Over the tropical continents the differences to the observations are small (positive in Central Africa, but negative in Indonesia and

**Global convection
modelling**

H. Tost et al.

Title Page

Abstract

Introduction

Conclusions

References

Tables

Figures

◀

▶

◀

▶

Back

Close

Full Screen / Esc

Printer-friendly Version

Interactive Discussion

South America). With EC, the total amount of simulated precipitation is much closer to the observed values in most regions, indicating a better performance with respect to both, total amount and spatial distribution.

EC mainly differs from T1 with respect to the different trigger criterion, and the alternative description of the shallow convection. Consequently these process descriptions likely explain the differences with T1. The shallow convection in EC yields relatively strong mass fluxes (Tompkins et al., 2004), which originate from a slightly different formulation of the entrainment and result in a more effective mixing of the lower troposphere and less transport of moisture into the middle and upper troposphere. In contrast, the closure assumption and the microphysics are similar in EC and T.

The ZH simulation is characterised by the strongest differences compared to the observations, i.e., a large overestimation over the tropical continents, especially Central Africa, the northern part of South America, India, and the Himalaya/Tibet region, and underestimation in parts of the tropical ITCZ over the ocean. Additionally, the simulated precipitation in the northern Pacific is less than observed, while it is slightly overestimated in Canada and the northern USA.

The ZHW simulation, in which an additional evaporation of convective precipitation in less cloudy areas is applied (Wilcox, 2003), leading to a better representation of the hydrological cycle in the MATCH model (Lang and Lawrence, 2005a), results in a reduction of the overestimation over the continents compared to ZH. On the other hand, over the ocean the same adjustment results in stronger underestimation. In the mid-latitudes the differences are similar to those of the ZH simulation, since the “Wilcox (2003) adjustment” affects only the Zhang-McFarlane part of the convection parameterisation which is mainly relevant for deep tropical convection, while the Hack part is more important in mid-latitude convection. In general it cannot be concluded that the precipitation distribution improves with this configuration compared to ZH.

The Bechtold simulations overall show an overestimation over, both, ocean and continents, most pronounced in the tropics, but also in the mid-latitudes. The patterns are captured very well, however with a global average positive bias. Similar to most

**Global convection
modelling**

H. Tost et al.

Title Page

Abstract

Introduction

Conclusions

References

Tables

Figures

◀

▶

◀

▶

Back

Close

Full Screen / Esc

Printer-friendly Version

Interactive Discussion

other simulations precipitation is significantly overestimated in the Himalaya/Tibet region. Furthermore, in central Africa and east of the African coast too strong rainfall is calculated with this convection scheme.

Statistical analysis

5 In addition to the differences of the annual average precipitation, some statistical analysis is performed using the GPCP observations for comparison. As already indicated in Fig. 1 and Fig. 2 all simulations show on average a higher total precipitation amount (as shown in Table 3), with the relative bias being largest (22.5%) for the B2 simulation. The default model setup still overestimates the precipitation rate by 14.5%, while the
10 ZHW simulation is closest to the observations with respect to the daily average rainfall.

The lowest de-biased root mean square error (RMSE) is found for the EC simulation, which also shows the highest correlation with the GPCP pattern. The slope of the linear regression is closest to unity for the Bechtold simulation, but the intercept shows a substantial offset. This confirms that the distribution is captured quite well with this
15 model configuration, but shows a systematic positive bias.

The fractionation into large-scale and convective precipitation is analysed in Table 4.

The T1 simulation shows the lowest fraction of convective precipitation with almost half of the precipitation originating from convective events. For the other Tiedtke simulations this is higher by around 10%, with convective activity being more effective in
20 precipitation formation. The ratio is higher for the ECMWF convection scheme with almost 2/3 of the total precipitation produced by convective clouds. The high values of the Zhang-McFarlane-Hack scheme seem unrealistic, although it must be considered that the Hack part of the scheme is an adjustment scheme which tends to stabilise the atmosphere. Therefore, high humidity values can lead to instabilities and consequently
25 trigger the convective adjustment which produces precipitation. For the large-scale cloud scheme this results in already reduced moisture and less precipitation formation in this model configuration. This can be understood in sight of the applied operator splitting technique, since the convection scheme is called before the large-scale cloud

Global convection modelling

H. Tost et al.

Title Page

Abstract

Introduction

Conclusions

References

Tables

Figures

◀

▶

◀

▶

Back

Close

Full Screen / Esc

Printer-friendly Version

Interactive Discussion

routines. In the simulation with the Bechtold scheme the convective fraction is similar to the T2 and T3 simulations and slightly lower than with the ECMWF scheme.

4.1.2 Evaporation

Since there is no global evaporation dataset available due to its large heterogeneity, only the average values between the individual simulations are compared. Furthermore, the average precipitation is compared with the average evaporation to close the hydrological cycle (Table 5).

For the T1 and T3 simulation the globally average annual evaporation completely balances the precipitation, for T2 almost. Since the T1 model setup is 'tuned' and the physical process descriptions between T2, T3 and T1 do not differ much, this is to be expected. The simulations with the EC scheme show a slightly higher evaporation than precipitation. However, a time series analysis of the soil moisture and the specific humidity shows no drift into a higher or lower regime, and also it is not an issue caused by the model spin-up. Consequently, the enhanced evaporation occurs over the quasi-unlimited moisture reservoir of the oceans. As in the Tiedtke simulations, in the ZH and ZHW model configurations a near-balance is calculated, while in the simulations using the Bechtold scheme the calculated precipitation is substantially higher than the evaporation. For the latter scheme this can result from a modification of the scheme as applied in this study. In the original scheme it is checked whether the mass of water within the column is conserved before and after the call of the convection scheme, and in case of a difference the difference is uniformly distributed over all levels. However, in the stratosphere with very low values of humidity this is not applicable. Therefore, it is not the humidity, but the precipitation flux which is adjusted in this model configuration. Consequently the discrepancies between evaporation and precipitation result from a weakness of the scheme, i.e. it is not fully water mass conserving. Therefore, the results of the EC and B simulations must be analysed with care, and this imbalance may lead to runaway drying or moistening of specific regions. However, in none of the simulations such a feature occurs within the six years of the simulation period.

Global convection modelling

H. Tost et al.

Title Page

Abstract

Introduction

Conclusions

References

Tables

Figures

◀

▶

◀

▶

Back

Close

Full Screen / Esc

Printer-friendly Version

Interactive Discussion

Since these convection schemes are both applied in weather prediction models, less emphasis is given in the schemes to mass conservation, since they are applied only for limited time periods.

4.1.3 Water vapour content of the atmosphere

5 Since a detailed analysis of the three-dimensional water vapour distribution is beyond the scope of this study, only the total water vapour content (i.e., the integrated water vapour column (IWVC)) of the atmosphere is compared to observations. Furthermore, a comparison of the zonal average water vapour between five simulations is shown for the upper troposphere - lower stratosphere (UTLS) region.

10 Observational dataset

The global dataset of the IWVC originates from combined measurements of GOME and SSM/I, presented by [Lang and Lawrence \(2005a,b\)](#). It starts in August 1995, therefore, only data from January 1996 to December 2000 (5 years also fully covered by the simulation period) are used for the analysis.

15 IWVC zonal average

As can be seen in Fig. 3 the overall shape of the zonal average IWVC agrees very well with the observations in all simulations.

On both hemispheres the gradient towards the equator is very similar. In boreal winter the absolute values in the tropics are higher than the observations in the EC, EC2, and ZHW simulation, while T1, T2, and T3 capture the maximum correctly. ZH, B1, and B2 all underestimate the absolute value in the tropics and show consequently a less steep gradient towards the equator. Around 40° N the observed IWVC is lower than the simulated in all setups.

25 In boreal summer the shape is very similar for all simulations in the tropics, again with some overestimation in T1, T3, ZHW, EC, EC2, and underestimation in ZH, B2

Title Page

Abstract

Introduction

Conclusions

References

Tables

Figures

◀

▶

◀

▶

Back

Close

Full Screen / Esc

Printer-friendly Version

Interactive Discussion

**Global convection
modelling**

H. Tost et al.

of ± 0.5 cm around the maximum observed value. In the extra-tropics more significant discrepancies occur. None of the convection schemes reproduces the observed low values around 40° S, and the overestimation at these latitudes exceeds 30% for all schemes. In the Northern Hemisphere a slightly enhanced IWVC is simulated by all schemes around 40° N, which does not occur in the observations. Even though this feature also appears in the ZH and B2 simulations the absolute values are lower than the observed south of 40° N.

In addition, all schemes overestimate the IWVC between 50° N and 65° N, with ZHW being worst with an overestimation of about 30%.

Overall the zonal structure is captured quite accurately by all model simulations.

IWVC annual average

The spatial patterns of the IWVC are depicted in Fig. 4. The observations (upper left panel) show highest water vapour columns in the tropical ITCZ with maxima over the warm pool and at the northern coast of South America. The meridional gradient is steeper from the equator up to 40° than further poleward. The subsidence regions of the subtropics are characterised by relatively low water vapour. Even though substantial evaporation takes place in these regions the water is transported towards the equator at low altitude in the Hadley circulation (e.g. Trenberth and Stepaniak, 2003), while subsidence suppresses deep convection and substantial upward transport of moisture.

The T1 simulation shows lower values in most oceanic parts of the ITCZ and the Sahara, while almost everywhere in the mid-latitudes higher values than observed are calculated. This indicates that the model does not accurately capture the meridional gradients. The underestimated IWVC in the tropics is partly consistent with regions of high precipitation (cf. Fig. 2), e.g., west of tropical South America precipitation is overestimated, and the atmospheric water vapour content is underestimated. However, this does not hold in general, since over the Atlantic ITCZ both IWVC and precipitation are underestimated. Over the warm pool the IWVC is overestimated, too, possibly resulting from too high evaporation leading to overestimated atmospheric moisture and

[Title Page](#)[Abstract](#)[Introduction](#)[Conclusions](#)[References](#)[Tables](#)[Figures](#)[◀](#)[▶](#)[◀](#)[▶](#)[Back](#)[Close](#)[Full Screen / Esc](#)[Printer-friendly Version](#)[Interactive Discussion](#)

rainfall in this region.

The EC simulation shows many regions in which substantially higher IWVC values are calculated, mainly in marine environments where convection is active (ITCZ, SPCZ, Caribbean, Indian Ocean). Again, this is consistent since in these regions the precipitation is much lower with this convection parameterisation compared to the Tiedtke scheme. Since moisture is transported from the evaporation regions in the subtropics into the convergence zones and does not produce precipitation as efficiently in EC compared to T1, the simulated IWVC is higher. Over the continents the differences are relatively smaller, except for the rain forest regions of Africa and South America.

In the simulation with the ZH convection parameterisation significantly lower IWVC values are calculated in the tropics, with the exception of Central Africa. These are mostly regions where the precipitation (Fig. 2) is captured accurately or slightly underestimated. In the mid-latitude storm tracks higher moisture is simulated than observed.

In the ZHW simulation with the enhanced evaporation the integrated water vapour column reaches much higher values in the tropics, overestimating the observations significantly. The meridional gradient is comparable to the measurements. Consequently, the absolute values are also too high in the mid-latitudes.

The B2 simulation (lower left panel in Fig. 4) shows an underestimation of column water vapour in the tropics and an overestimation in the mid-latitudes. In the tropics this is again consistent, since precipitation is strongly overestimated (cf. Fig. 2) in these regions. Even though in the mid-latitudes the IWVC is also overestimated, this argument is not applicable there, since the precipitation is also too strong. Therefore, this indicates that either the evaporation is too high in these regions or the poleward transport of moisture from the subtropics into the storm tracks is too rapid in this setup.

IWVC statistical analysis

A statistical summary of the comparison with observations is presented in Table 6. The mean values and corresponding biases show that in some simulations the global average IWVC is overestimated, notably in those using the Tiedtke, ECMWF and ZHW

Global convection modelling

H. Tost et al.

Title Page

Abstract

Introduction

Conclusions

References

Tables

Figures

◀

▶

◀

▶

Back

Close

Full Screen / Esc

Printer-friendly Version

Interactive Discussion

schemes, whereas the ZH and Bechtold simulations underestimate the vertical water vapour column. However, only the EC simulations and ZHW have a bias larger than 10%. The lowest global average bias is found for the B1 simulation. Comparison of the horizontal patterns, using the de-biased RMSE as indicators, shows that the T3 simulation best represents the observed patterns. Nevertheless, the results for all other tested setups are similar. All simulated patterns are highly correlated to the observed distribution with correlation coefficients R^2 ranging from 0.91 (ZH) to 0.95 (ZHW). This is also confirmed by the slopes of the linear regression being close to one.

Water vapour in the UTLS

Convection is a key process that moistens the upper troposphere - lower stratosphere (UTLS) region. Depending on the convection scheme, the amount of total water is reduced by precipitation partly balancing the moistening process. Differences in water vapour in the upper troposphere can result from both different convective transport strength and drying efficiency.

To identify these effects the specific humidity above 250 hPa is shown in Fig. 5. The results of the T1 simulation (used as a reference for this analysis and depicted in the upper panel) show the typical distribution, with highest values in the tropics and a strong gradient across the tropopause. Note that detailed features of the water vapour distribution like the tape recorder and the quasi-biennial oscillation cannot be simulated due to the relatively coarse vertical resolution in the UTLS in the chosen model configuration with 31 layers up to 10 hPa.

In the EC simulation substantially more (>75%) water vapour is transported into the tropical upper troposphere. Since the convection scheme is the only difference with the reference simulation, this must be a direct or indirect consequence of convection. Due to higher moisture at the convective cloud tops, more water vapour enters the stratosphere having an impact on radiative cooling and consequently the temperature and the dynamics. At high latitudes the differences are of opposite sign, but are substantially smaller.

Title Page

Abstract

Introduction

Conclusions

References

Tables

Figures

◀

▶

◀

▶

Back

Close

Full Screen / Esc

Printer-friendly Version

Interactive Discussion

**Global convection
modelling**

H. Tost et al.

Title Page

Abstract

Introduction

Conclusions

References

Tables

Figures

◀

▶

◀

▶

Back

Close

Full Screen / Esc

Printer-friendly Version

Interactive Discussion

The ZH simulation similarly computes more water vapour in the upper troposphere, but less than EC. Moreover, the higher values do not reach as high, leading only to slightly more moisture in the stratosphere. Therefore, the influence of replacing the T convection scheme by ZH is largely limited to the troposphere.

5 This is also valid for the ZHW simulation. In contrast to EC and ZH, ZHW humidity is somewhat higher compared to T1 also in the polar regions. Additionally, in the stratosphere of the Northern Hemisphere lower specific humidity is computed.

The simulation B2 shows values comparable to T1 in the upper troposphere, but substantially lower values between 140 and 100 hPa at low latitudes. In contrast to the
10 other convection schemes, less water is transported into the upper troposphere and reaches the stratosphere.

The effects of the different convection schemes are consistent with the results discussed above. The EC scheme produces less precipitation than the reference T1. Consequently more moisture is transported into the UTLS region. The same is valid
15 for ZH and ZHW. B2 produces even more precipitation than T1, and as a consequence less water can be transported upward and enter the stratosphere. The water vapour content of the UTLS has a strong impact on temperature, the tropopause structure and stratosphere-troposphere exchange processes.

20 Summary

Figure 6 summarises the comparisons with observations in a Taylor diagram (Taylor, 2001) for which all quantities have been normalised to the observed standard deviation. The precipitation, denoted by the crosses, shows the highest correlation and the normalised standard deviation (σ) closest to unity for the EC simulation. Therefore, the spatial patterns of the average precipitation are overall captured best. The other simulations are slightly worse, e.g., B1 and B2 are less strongly correlated to the
25 observations, but σ is closer to 1 compared to the Tiedtke simulations. For the ZH simulations the correlation is lower. The best representation of, both spatial distribution

and absolute values is achieved with the ECMWF scheme. For the IWVC the results are summarised by the triangles. The correlation is high for all simulations and the amplitude of the spatial and temporal variation is also well reproduced (best for B1, but only slightly worse for the other schemes).

5 Figure 6 shows that the patterns of the IWVC are captured much better than the precipitation patterns. Additionally, it indicates that the simulated IWVC is more robust in view of replacing the convection scheme than the precipitation. Nevertheless, both quantities are substantially influenced by the parameterisation. A scheme that performs best with respect to both the precipitation and the IWVC cannot be identified, especially if the bias is additionally taken into account. As seen in Fig. 3 and Fig. 4, the overall spatial patterns are simulated relatively accurately by all model configurations with each scheme having some weaknesses.

Furthermore, the effect of the different convection schemes on the UTLS region is substantial.

15 4.2 Global meteorology

The selected convection scheme has a direct impact on the simulated climate. As shown above, the hydrological cycle is substantially modified by exchanging the convection parameterisation. Due to the influence of clouds, water vapour, etc. on radiation, changes in the energy budget are to be expected. Since the model system in the T1 configuration is the default for ECHAM5 and has been “tuned” to reproduce present-day climate (Roeckner et al., 2006), the T1 simulation is taken as reference for this section.

As shown in the section above, the water vapour distribution is substantially modified by the exchange of the convection scheme. Via the feedback mechanisms in the climate model this has effects on large-scale cloud formation, the radiation fluxes, etc. in a way that this tuning is probably not valid in the altered model configurations.

Title Page

Abstract

Introduction

Conclusions

References

Tables

Figures

◀

▶

◀

▶

Back

Close

Full Screen / Esc

Printer-friendly Version

Interactive Discussion

4.2.1 Energy budgets

The energy fluxes at the surface simulated by the individual model configurations are compared in Table 7. None of the simulations show a trend in the global average energy fluxes over the simulation period. Therefore, a stable model climate has been achieved in all cases, which indicates the physical consistency of the ECHAM5 model, but it cannot be stated that is also the case for longer integration periods. For such studies a “re-tuning” of the model setup might be required. The simulations can be classified into two groups: The Tiedtke and the Zhang-McFarlane-Hack simulations are close to each other with respect to the solar and infrared radiation at the surface. Since the evaporation is smaller with the Zhang-McFarlane-Hack scheme, consequently the latent heat flux is reduced and the sensible heat flux is larger compared to the Tiedtke simulations.

The other group consists of the ECMWF and the Bechtold simulations. Both compute significantly lower solar radiation fluxes at the surface. The IWVC for the EC simulation (compare Fig. 4) in the tropics is higher than observed and than in the reference simulation (T1), resulting in a more effective short wave radiation absorption, and stronger cloud formation leading to higher reflectance. Furthermore, as seen in Fig. 5 with EC, there is much more water vapour in the upper troposphere contributing to radiative cooling.

For the B2 simulation there is neither higher IWVC in the tropics nor higher water vapour in the UTLS. Nevertheless, the different trigger conditions and microphysical scheme of this convection parameterisation can lead to stronger cloud formation, which also reduces the net solar radiation flux at the surface. Even though the global surface temperature does not deviate strongly from the reference simulation (see below), the net infrared radiation flux in B2 is smaller by several W/m^2 than in the reference.

For all simulations the latent heat flux reflects the differences in evaporation.

Since the differences in the solar radiation at the surface are much larger than those in the thermal radiation, the residual sensible heat flux is much reduced in the simu-

Title Page

Abstract

Introduction

Conclusions

References

Tables

Figures

◀

▶

◀

▶

Back

Close

Full Screen / Esc

Printer-friendly Version

Interactive Discussion

lations of the second group. This likely influences the development of the convective boundary layer.

An important parameter indicating climate change is the outgoing long-wave radiation (OLR) at the top of the atmosphere. The average values for the individual simulations are presented in the last column of Table 7. Taking the value of the 'tuned' T1 model configuration as a reference (in Wild and Roeckner, 2006 exactly the same value is given for the OLR), the other Tiedtke simulations already deviate by more than -1.5 W/m^2 . The simulations with the EC scheme result in even lower values by almost -3 W/m^2 . The ZH simulation yields lower deviations than the T3 simulations indicating the smallest deviation from present-day conditions. The low value of the ZHW simulation shows a strong variation of the OLR, being significantly to low. The B1 simulation results also in too low values, being lower than the EC configurations. On the other hand, the B2 simulation shows even larger OLR average values. Compared with the references by observed data, given in Wild and Roeckner (2006), this higher value is also quite realistic.

In summary, although there are some differences in the energy budgets all simulations produce stable, slightly different states of the atmosphere. In comparison with the evaluation of the radiation fluxes in the standard ECHAM5 model (Wild and Roeckner, 2006) with satellite data, the short-wave fluxes of the first group are more realistic for present day conditions. However, the thermal radiation at the top of the atmosphere appears quite realistic in the B2 simulation, while the other simulations deviate partly significantly from the reference simulation (-7.9 W to $+1.5 \text{ W}$).

4.2.2 Effects on temperature

The effects on the temperature distribution are illustrated in Fig. 7, which shows the correlation of the temperature between the individual simulations and the reference simulation T1. The correlation is very high and the linear regression is very close to the one-to-one line for all simulations. However, the scatter indicates differences by several degrees in the region of the highest temperatures (lower troposphere). In the

Global convection modelling

H. Tost et al.

Title Page

Abstract

Introduction

Conclusions

References

Tables

Figures

◀

▶

◀

▶

Back

Close

Full Screen / Esc

Printer-friendly Version

Interactive Discussion

upper troposphere the range is even broader, indicating variations of ± 10 K. This can partly be attributed to the modified water vapour content in the UTLS region, where the temperature is highly sensitive to absorption and re-emission of radiation.

However, the symbols do not show any specific tendency to over- or underestimate the temperature relative to the reference in neither the upper, the middle, nor in the lower atmosphere. This indicates that the temperature structure of the atmosphere is not significantly altered by exchanging the convection parameterisation.

Finally, the global average temperatures are compared in Table 8.

The global average temperature of the atmosphere (up to 10 hPa) simulated with the individual convection schemes is within ± 0.8 K of the reference simulation. The highest value results from the EC, the lowest from the B2 simulation. The simulations with the ZH scheme show only minor changes of the global average temperature of the atmosphere.

The temperature in the lowest model layer shows on average lower values for the EC and Bechtold simulations, since the net solar radiation is reduced. However, the relative temperature deviations from the reference are much smaller than the relative differences in the incoming short wave radiation, which are consistently balanced by other processes, e.g., through the boundary layer meteorology. The average surface temperature for the ZH scheme is also slightly lower than in the reference simulation. In addition to the radiation effects the altered hydrological cycle has an impact on the temperature in the lowest model level via changed precipitation and evaporation. Since this induces feedback processes with soil temperature and moisture, and boundary layer meteorology, a direct assessment of all the processes involved is difficult. Even though the deviation from the reference is mainly small on the global average (< 0.66 K), local differences can be much larger (up to ± 5 K), as indicated by the range of the distributions in Fig. 7. This is directly supported by the differences of the temperature in the surface layer between the individual simulations and the reference (not shown).

These global average differences are of the same magnitude as temperature

Global convection modelling

H. Tost et al.

Title Page

Abstract

Introduction

Conclusions

References

Tables

Figures

◀

▶

◀

▶

Back

Close

Full Screen / Esc

Printer-friendly Version

Interactive Discussion

changes resulting from perturbed atmospheric conditions as applied in climate scenario calculations and the observed temperature change within the 20th century. Even though a direct comparison is not applicable, this indicates that the uncertainty resulting from different formulations of the process description of subgrid-scale convection is still relatively large and is partly overcome by “model tuning”. However, no study of the behaviour of the individual model configurations under specified conditions has been performed to directly address the influence in climate scenario simulations.

5 Conclusions

Considering that convection plays a key role in the redistribution of heat, momentum and moisture in the atmosphere, it may be expected that the results of different convection schemes substantially impact the simulated weather, hydrological cycle and climate of a GCM. Our inter-comparison of four different convection parameterisations in ECHAM5, including several different versions and updates, nevertheless shows that the results of all schemes are robust, i.e. the simulated meteorology is stable and realistic over the 6-year period considered. Although all parameterisations involved are mass-flux schemes, based on the original assumptions of modifying the moist static energy and humidity through interactions between convective cells and the large-scale environment (Arakawa and Schubert, 1974), they differ in important aspects about the triggering of convection, the closure assumption, and formulation of the cloud processes (e.g., entrainment and precipitation formation).

The differences are generally not very large, especially in the zonal mean, and the computed water vapour columns are close to observations. Overall, the default ECHAM5 convection scheme T1 by Tiedtke (1989), with modifications by Nordeng (1994), simulates very realistic water vapour distributions, which is crucial for radiative transfer processes and atmospheric chemistry.

The alternative schemes give rise to somewhat larger discrepancies with observations, although the differences are mostly within about $\pm 15\%$, probably close to or

Title Page

Abstract

Introduction

Conclusions

References

Tables

Figures

◀

▶

◀

▶

Back

Close

Full Screen / Esc

Printer-friendly Version

Interactive Discussion

within the uncertainty range of the measurement climatology used. The differences are largest and partly quite significant for the UTLS region, especially in low latitudes, related to the depth of convection and the efficiency of precipitation formation.

The results of the inter-comparison for precipitation show larger differences and discrepancies compared to observations. Both the absolute values and the spatial distribution of annual rainfall rates are best reproduced with the ECMWF convection scheme. Except ZHW all schemes seem to overestimate precipitation in the ITCZ, over the Pacific warm pool and near strongly pronounced surface topography, the latter being treated most realistically by the EC scheme. Discrepancies are particularly significant for computed convection over the Tibetan Plateau and the Andes mountain range.

We have also considered some global characteristics of the atmospheric energy and moisture budgets. Some schemes, notably EC and B, appear to produce too much cloudiness, preventing solar radiation to reach the surface. As a consequence, the outgoing IR radiation at the surface and the sensible heat flux seem too low. Nevertheless, the effect on atmospheric temperature is generally small, on average ± 0.8 K, although locally differences of ± 5 K can occur, especially near the surface and upper troposphere.

Since all schemes have particular aspects for which they perform comparatively well or less well, it cannot unequivocally be concluded which of the schemes is superior. Therefore, we have no incentive to replace the T1 parameterisation as the standard convection scheme, although the triggering and depth of convection and the formation of precipitation may be further optimised. However, for specific studies over shorter time periods in which a better representation of the hydrological cycle might result in substantial improvements for the local meteorology such an exchange is probably useful.

Acknowledgements. We are grateful to P. Bechtold for providing the code for the ECMWF and his own convection scheme. Furthermore we thank M. Lawrence for providing the MATCH-MPIC version of the Zhang-McFarlane-Hack scheme and the fruitful discussions and help with

Global convection modelling

H. Tost et al.

Title Page

Abstract

Introduction

Conclusions

References

Tables

Figures

◀

▶

◀

▶

Back

Close

Full Screen / Esc

Printer-friendly Version

Interactive Discussion

the code implementation. Additionally, we thank A. Bott for the supervision of the PhD thesis of H. Tost on which this paper is based. We acknowledge the work of R. Lang and thank him for providing the dataset with the IWVC observations, as well as the colleagues of the GPCP project for their datasets. Furthermore, we wish to acknowledge use of the Ferret program for analysis and graphics in this paper. Ferret is a product of NOAA's Pacific Marine Environmental Laboratory. (Information is available at <http://ferret.pmel.noaa.gov/Ferret/>). Additionally we thank all MESSy developers and users for support and discussions.

References

- Adler, R. F., Huffman, G. J., Chang, A., Ferraro, R., Xie, P., Janowiak, J. E., Rudolf, B., Schneider, U., Curtis, S., Bolvin, D., Gruber, A., Susskind, J., Arkin, P., and Nelkin, E.: The Version-2 Global Precipitation Climatology Project (GPCP) Monthly Precipitation Analysis (1979–Present), *J. Hydrometeorol.*, 4, 1147–1167, 2003. [9220](#)
- Arakawa, A.: The Cumulus Parameterization Problem: Past, Present, and Future, *J. Clim.*, 17, 2493–2525, 2004. [9214](#), [9215](#)
- Arakawa, A. and Schubert, W. H.: Interaction of a Cumulus Cloud Ensemble with the Large-Scale Environment, Part I, *J. Atmos. Sci.*, 31, 674–701, 1974. [9214](#), [9218](#), [9236](#)
- Bechtold, P., Bazile, E., Guichard, F., Mascart, P., and Richard, E.: A mass-flux convection scheme for regional and global models, *Q. J. R. Meteorol. Soc.*, 127, 869–886, 2001. [9215](#), [9217](#), [9244](#)
- Bechtold, P., Chaboureaud, J.-P., Beljaars, A., Betts, A. K., Köhler, M., Miller, M., and Riedelsperger, J.-L.: The simulation of the diurnal cycle of convective precipitation over land in a global model, *Q. J. R. Meteorol. Soc.*, 130, 3119–3137, 2004. [9217](#), [9244](#)
- Donner, L. J., Seman, C. J., Hemler, R. S., and Fan, S.: A Cumulus Parameterization Including Mass Fluxes, Convective Vertical Velocities, and Mesoscale Effects: Thermodynamic and Hydrological Aspects in a General Circulation Model, *J. Clim.*, 14, 3444–3463, 2001. [9215](#)
- Emanuel, K. A. and Zivkovic-Rothman, M.: Development and Evaluation of a Convection Scheme for Use in Climate Models, *J. Atmos. Sci.*, 56, 1766–1782, 1999. [9215](#)
- Ghan, S., Randall, D., Xu, K.-M., Cederwall, R., Cripe, D., Hack, J., Iacobellis, S., Klein, S., Krueger, S., Lohmann, U., Pedretti, J., Robock, A., Rotstajn, L., Somerville, R., Stenchikov, G., Sud, Y., Walker, G., Xie, S., Yio, J., and Zhang, M.: A comparison of single column model

Title Page

Abstract

Introduction

Conclusions

References

Tables

Figures

◀

▶

◀

▶

Back

Close

Full Screen / Esc

Printer-friendly Version

Interactive Discussion

- simulations of summertime midlatitude continental convection, *J. Geophys. Res.*, 105, 2091–2124, 2000. [9215](#)
- Grabowski, W. W.: An Improved Framework for Superparameterization, *J. Atmos. Sci.*, 61, 1940–1952, 2004. [9215](#)
- 5 Grabowski, W. W. and Smolarkiewicz, P. K.: CRCP: a Cloud Resolving Convection Parameterization for modeling the tropical convecting atmosphere, *Physica*, 133D, 171–178, 1999. [9215](#)
- Grant, A. L. M. and Brown, A. R.: A similarity hypothesis for shallow-cumulus transports, *Q. J. R. Meteorol. Soc.*, 125, 1913–1936, 1999. [9218](#), [9243](#), [9244](#)
- 10 Grassl, H., Jost, V., Schulz, J., Kumar, M. R. R., Bauer, P., and Schluessel, P.: The Hamburg Ocean-Atmosphere Parameters and Fluxes from Satellite Data (HOAPS): A climatological Atlas of Satellite-Derived Air-Sea Interaction Parameters over the World Oceans, Tech. Rep. 312, Max-Planck-Institut für Meteorologie, 2000. [9220](#)
- Hack, J. J.: Parameterization of moist convection in the National Center for Atmospheric Research community climate model (CCM2), *J. Geophys. Res.*, 99, 5551–5568, 1994. [9214](#), [9217](#), [9244](#)
- 15 Hagemann, S., Arpe, K., and Roeckner, E.: Evaluation of the hydrological cycle in the ECHAM5 model, *J. Clim.*, 18, 3810–3827, 2006. [9216](#), [9223](#)
- Houze Jr., R. A.: Mesoscale Convective Systems, *Rev. Geophys.*, 42, RG4003, doi: 8755-1209/2004RG000150, 2004. [9215](#)
- 20 Huffman, G. J., Adler, R. F., Arkin, P., Chang, A., Ferraro, R., Gruber, A., Janowiak, J., McNab, A., Rudolf, B., and Schneider, U.: The Global Precipitation Climatology Project (GPCP) Combined Precipitation Dataset, *Bull. Amer. Meteorol. Soc.*, 78, 5–20, 1997. [9220](#)
- Jakob, C. and Siebesma, A. P.: A New Subcloud Model for Mass-Flux Convection Schemes: Influence on Triggering, Updraft Properties, and Model Climate, *Mon. Weather Rev.*, 131, 2765–2778, 2003. [9243](#)
- 25 Jöckel, P., Sander, R., Kerkweg, A., Tost, H., and Lelieveld, J.: Technical Note: The Modular Earth Submodel System (MESSy) – a new approach towards Earth System Modeling, *Atmos. Chem. Phys.*, 5, 433–444, 2005. [9216](#), [9217](#)
- 30 Jöckel, P., Tost, H., Pozzer, A., Brühl, C., Buchholz, J., Ganzeveld, L., Hoor, P., Kerkweg, A., Lawrence, M. G., Sander, R., Steil, B., Stiller, G., Tanarhte, M., Taraborrelli, D., van Aardenne, J., and Lelieveld, J.: The atmospheric chemistry general circulation model ECHAM5/MESSy1: consistent simulation of ozone from the surface to the mesosphere, *At-*

**Global convection
modelling**

H. Tost et al.

 Title Page

Abstract

Introduction

Conclusions

References

Tables

Figures

◀

▶

◀

▶

Back

Close

Full Screen / Esc

Printer-friendly Version

Interactive Discussion

- mos. Chem. Phys. Discuss., 6, 6957–7050, 2006. [9217](#)
- Kuo, H. L.: Further Studies of the Parameterization of the Influence of Cumulus Convection on Large-Scale Flow, *J. Atmos. Sci.*, 31, 1232–1240, 1974. [9214](#)
- Lang, R. and Lawrence, M. G.: Improvement of the vertical humidity distribution in the chemistry-transport model MATCH through increased evaporation of convective precipitation, *Geophys. Res. Lett.*, 32, L17812, doi:10.1029/2005GL023172, 2005a. [9224](#), [9227](#)
- Lang, R. and Lawrence, M. G.: Evaluation of the hydrological cycle of MATCH driven by NCEP reanalysis data: comparison with GOME water vapor measurements, *Atmos. Chem. Phys.*, 5, 887–908, 2005b. [9227](#)
- Lawrence, M. G., Crutzen, P. J., Rasch, P. J., Eaton, B. E., and Mahowald, N. M.: A model for studies of tropospheric chemistry: Description, global distributions and evaluation, *J. Geophys. Res.*, 104, 26 245–26 277, 1999. [9217](#)
- Lee, M.-I., Kang, I.-S., and Mapes, B. E.: Impacts of Cumulus Convection Parameterization on Aqua-planet AGCM Simulations of Tropical Intraseasonal Variability, *J. Meteorol. Soc. Japan*, 81, 963–992, 2003. [9215](#)
- Lin, J. W.-B. and Neelin, J. D.: Considerations for Stochastic Convective Parameterization, *J. Atmos. Sci.*, 59, 959–975, 2002. [9215](#)
- Lin, S.-J. and Rood, R.: Multidimensional Flux-Form Semi-Lagrangian Transport Schemes, *Mon. Weather Rev.*, 124, 2046–2070, 1996. [9216](#)
- Lohmann, U. and Roeckner, E.: Design and performance of a new cloud microphysics scheme developed for the ECHAM general circulation model, *Climate Dyn.*, 12, 557–572, 1996. [9216](#)
- Mahowald, N. M., Rasch, P. J., Eaton, B. E., Whittlestone, S., and Prinn, R. G.: Transport of ²²²radon to the remote troposphere using the Modell of Atmospheric Transport and Chemistry and assimilated winds from ECMWF and the National Center for Environmental Prediction/NCAR, *J. Geophys. Res.*, 102, 28 139–28 151, 1997. [9215](#)
- Nober, F. J. and Graf, H. F.: A new convective cloud field model based on principles of self-organisation, *Atmos. Chem. Phys.*, 5, 2749–2759, 2005. [9215](#)
- Nordeng, T. E.: Extended versions of the convective parametrization scheme at ECMWF and their impact on the mean and transient activity of the model in the tropics, *Tech. Rep. 206*, ECWMF, 1994. [9217](#), [9236](#), [9244](#)
- Randall, D., Khairoutdinov, M., Arakawa, A., and Grabowski, W.: Breaking the cloud parameterization deadlock, *Bull. Amer. Meteorol. Soc.*, 84, 1547–1564, 2003. [9214](#), [9215](#)
- Randall, D. A., Xu, K.-M., Somerville, R. J. C., and Iacobellis, S.: Single-Column Models and

Global convection
modelling

H. Tost et al.

Title Page

Abstract

Introduction

Conclusions

References

Tables

Figures

◀

▶

◀

▶

Back

Close

Full Screen / Esc

Printer-friendly Version

Interactive Discussion

Cloud Ensemble Models as Links between Observations and Climate Models, *J. Clim.*, 9, 1683–1697, 1996. [9215](#)

Rasch, P. J., Mahowald, N. M., and Eaton, B. E.: Representations of transport, convection and the hydrologic cycle in chemical transport models: Implications for the modeling of short-lived and soluble species, *J. Geophys. Res.*, 102, 28 127–28 138, 1997. [9217](#)

Roeckner, E., Bäuml, G., Bonaventura, L., Brokopf, R., Esch, M., Giorgetta, M., Hagemann, S., Kirchner, I., Kornblue, L., Manzini, E., Rhodin, A., Schleese, U., Schulzweida, U., and Tompkins, A.: The atmospheric general circulation model ECHAM5: Part 1, Tech. Rep. 349, Max-Planck-Institut für Meteorologie, 2003. [9217](#)

Roeckner, E., Brokopf, R., Esch, M., Giorgetta, M., Hagemann, S., Kornblue, L., Manzini, E., Schleese, U., and Schulzweida, U.: The atmospheric general circulation model ECHAM5: Part 2, Tech. Rep. 354, Max-Planck-Institut für Meteorologie, 2004. [9217](#)

Roeckner, E., Brokopf, R., Esch, M., Giogetta, M., Hagemann, S., Kornblueh, L., Manzini, E., Schleese, U., and Schulzweida, U.: Sensitivity of simulated climate to horizontal and vertical resolution in the ECHAM5 atmosphere model, *J. Clim.*, 19, 3771–3791, 2006. [9216](#), [9232](#)

Taylor, K. E.: Summarizing multiple aspects of model performance in a single diagram, *J. Geophys. Res.*, 106, 7183–7192, 2001. [9231](#)

Tiedtke, M.: A Comprehensive Mass Flux Scheme for Cumulus Parametrization in Large-Scale Models, *Mon. Weather Rev.*, 117, 1779–1800, 1989. [9214](#), [9217](#), [9218](#), [9236](#), [9244](#)

Tompkins, A. M.: A prognostic parameterization for the subgrid-scale variability of water vapor and clouds in large-scale models and its use to diagnose cloud cover, *J. Atmos. Sci.*, 59, 1917–1942, 2002. [9216](#)

Tompkins, A. M., Bechtold, P., Beljaars, A. C. M., Benedetti, A., Cheinet, S., Janiskova, M., Köhler, M., Lopez, P., and Morcrette, J.-J.: Moist physical processes in the IFS: Progress and Plans, Tech. Rep. 452, ECWMF, 2004. [9224](#)

Trenberth, K. E. and Stepaniak, D. P.: Seamless Poleward Atmospheric Energy Transport and Implications for the Hadley Circulation, *J. Clim.*, 16, 3706–3722, 2003. [9228](#)

Wilcox, E. M.: Spatial and Temporal Scales of Precipitation Tropical Cloud Systems in Satellite Imagery and the NCAR CCM3, *J. Clim.*, 16, 3545–3559, 2003. [9224](#), [9244](#)

Wild, M. and Roeckner, E.: Radiative Fluxes in the ECHAM5 general circulation model, *J. Clim.*, 19, 3792–3809, 2006. [9216](#), [9234](#)

Xie, P. and Arkin, P.: Global Precipitation: A 17-year Monthly Analysis Based on Gauge Observations, Satellite Estimates and Numerical Model Outputs, *Bullet. Amer. Meteorol. Soc.*, 78,

Global convection
modelling

H. Tost et al.

Title Page

Abstract

Introduction

Conclusions

References

Tables

Figures

◀

▶

◀

▶

Back

Close

Full Screen / Esc

Printer-friendly Version

Interactive Discussion

2539–2558, 1997. [9220](#)

Xie, S., Xu, K., Cederwall, R. T., Bechtold, P., Del Genio, A. D., Klein, S. A., Cripe, D. G., Ghan, S. J., Gregory, D., Iacobellis, S. F., Krueger, S. K., Lohmann, U., Petch, J. C., Randall, D. A., Rotstayn, L. D., Somerville, R. C. J., Sud, Y. C., von Salzen, K., Walker, G. K., Wolf, A., Yio, J. J., Zhang, G. J., and Zhang, M.: Intercomparison and evaluation of cumulus parameterizations under summertime midlatitude continental conditions, Q. J. R. Meteorol. Soc., 128, 1095–1135, 2002. [9215](#), [9218](#)

Zhang, G. J. and McFarlane, N. A.: Sensitivity of Climate Simulations to the Parameterization of Cumulus Convection in the Canadian Climate Centre General Circulation Model, Atmos.-Ocean, 33, 407–446, 1995. [9214](#), [9217](#), [9244](#)

ACPD

6, 9213–9257, 2006

Global convection modelling

H. Tost et al.

Title Page

Abstract

Introduction

Conclusions

References

Tables

Figures

◀

▶

◀

▶

Back

Close

Full Screen / Esc

Printer-friendly Version

Interactive Discussion

EGU

Table 1. Differences between the convection schemes. w^* represents a mixed-layer vertical velocity scale, T_v the virtual temperature of the air parcel (superscript (ρ) and the environment (superscript env), w_u the updraft vertical velocity, h_c the moist static energy and its saturated state h_c^* , Θ_v the potential virtual temperature, Π the Exner-Function, \bar{w} the average vertical velocity, Δr the precipitation formation, r_u^c and r_u^i the updraft cloud water and ice, which are multiplied with different constants.

	Tiedtke	ECMWF	Zhang-McFarlane-Hack	Bechtold
Closure (deep)	CAPE / moisture convergence	CAPE	CAPE	CAPE
Entrainment	turbulent and organised	turbulent	turbulent	turbulent
Closure (shallow)	moisture convergence	1.) moist static energy 2.) w^* (Grant and Brown, 1999)	moist static energy	CAPE
Trigger condition	$T_v^\rho + \Delta T > T_v^{\text{env}}$ $\Delta T = 0.5 \text{ K}$	$w_u > 0$ with w_u from entrainment and buoyancy (Jakob and Siebesma, 2003)	Zhang-McFarlane: $T_v^\rho + \Delta T > T_v^{\text{env}}$ $\Delta T = 0.5 \text{ K}$ Hack: $h_c - h_c^* > 0$	$\Theta_v^\rho + \frac{\Delta T}{\Pi} > \Theta_v^{\text{env}}$ $\Delta T = 6 \cdot \bar{w} ^{1/3}$
Precipitation formation	$\Delta r = r_u^c / (1 + c_t \cdot \Delta z)$	proportional to $1/w_u$	Zhang-McFarlane: $\Delta r = c_0 \cdot r_u^c$ Hack: $\Delta r = (1 - \beta) \cdot r_u^c$	$\Delta r_r + \Delta r_s = (r_u^c + r_u^i) \cdot \{1 - \exp(-c_{pr} \Delta z / w_u)\}$

Title Page

Abstract

Introduction

Conclusions

References

Tables

Figures

◀

▶

◀

▶

Back

Close

Full Screen / Esc

Printer-friendly Version

Interactive Discussion

Table 2. List of performed simulations.

Short Name	Simulation description
T1	Convection parameterisation of Tiedtke (1989) – Nordeng (1994) , ECHAM5 standard
T2	Original convection parameterisation of Tiedtke (1989)
T3	Convection parameterisation of Tiedtke (1989) with the hybrid-closure
EC	Convection parameterisation of the ECMWF (Bechtold et al., 2004 , and references therein) with the shallow convection closure of Grant and Brown (1999)
EC2	Convection parameterisation of the ECMWF (Bechtold et al., 2004 , and references therein) with the classical shallow convection closure
ZH	Convection parameterisation of Zhang and McFarlane (1995) - Hack (1994)
ZHW	Convection parameterisation of Zhang and McFarlane (1995) - Hack (1994) with an enhanced evaporation routine (Wilcox, 2003)
B1	Convection parameterisation of Bechtold et al. (2001) without explicit treatment of cloud ice
B2	Convection parameterisation of Bechtold et al. (2001) with explicit treatment of cloud ice

Global convection modelling

H. Tost et al.

Title Page

Abstract

Introduction

Conclusions

References

Tables

Figures

◀

▶

◀

▶

Back

Close

Full Screen / Esc

Printer-friendly Version

Interactive Discussion

Global convection
modelling

H. Tost et al.

Table 3. Comparison of simulated and observed (GPCP dataset) precipitation rates and distributions. The global mean observed precipitation flux is 2.62 mm/day. For both model and observations the mean values are area weighted. The root mean square error (RMSE) is calculated after the bias has been subtracted. R^2 is the correlation coefficient, the linear regression between model and observations is listed in terms of slope and intercept.

–	mean [mm/day]	bias [mm/day]	bias [%]	RMSE [mm/day]	R^2	slope	intercept
T1	3.00	0.38	14.5	1.52	0.70	1.13	−0.01
T2	2.91	0.29	11.0	1.43	0.69	1.07	0.05
T3	2.93	0.31	11.7	1.37	0.72	1.09	0.03
EC	2.87	0.25	9.5	1.11	0.72	0.90	0.40
EC2	2.86	0.24	9.0	1.12	0.70	0.88	0.45
ZH	2.82	0.20	7.6	1.52	0.57	0.87	0.42
ZHW	2.71	0.09	3.3	1.44	0.60	0.87	0.36
B1	3.14	0.52	19.8	1.32	0.68	0.98	0.43
B2	3.21	0.59	22.5	1.33	0.67	0.98	0.46

Title Page

Abstract

Introduction

Conclusions

References

Tables

Figures

◀

▶

◀

▶

Back

Close

Full Screen / Esc

Printer-friendly Version

Interactive Discussion

**Global convection
modelling**

H. Tost et al.

Table 4. Average fraction of large-scale and convective precipitation for the different simulations.

Simulation	Convective Precipitation Fraction [%]	Large-scale Precipitation Fraction [%]
T1	48.4	51.6
T2	58.0	42.0
T3	57.5	42.5
EC	63.6	36.4
EC2	65.4	34.6
ZH	83.2	16.8
ZHW	76.7	23.3
B1	59.6	40.4
B2	60.1	39.9

[Title Page](#)[Abstract](#)[Introduction](#)[Conclusions](#)[References](#)[Tables](#)[Figures](#)[I◀](#)[▶I](#)[◀](#)[▶](#)[Back](#)[Close](#)[Full Screen / Esc](#)[Printer-friendly Version](#)[Interactive Discussion](#)

**Global convection
modelling**

H. Tost et al.

Table 5. Mean evaporation and precipitation fluxes for the various simulations.

Simulation	Evaporation mean [mm/day]	Precipitation mean [mm/day]
T1	3.00	3.00
T2	2.90	2.91
T3	2.93	2.93
EC	2.94	2.87
EC2	2.91	2.86
ZH	2.83	2.82
ZHW	2.68	2.71
B1	2.95	3.14
B2	3.05	3.21

[Title Page](#)[Abstract](#)[Introduction](#)[Conclusions](#)[References](#)[Tables](#)[Figures](#)[I◀](#)[▶I](#)[◀](#)[▶](#)[Back](#)[Close](#)[Full Screen / Esc](#)[Printer-friendly Version](#)[Interactive Discussion](#)

Global convection
modelling

H. Tost et al.

Table 6. Comparison of the simulated and observed (GOME&SSM/I) IWVC values and distributions. The mean observed vertically integrated water vapour column is 2.33 cm. For both model and observations the mean values are area weighted. The root mean square error (RMSE) is calculated after the bias has been subtracted. R^2 is the correlation coefficient, the linear regression between model and observations is listed in terms of slope and intercept.

–	mean [cm]	bias [cm]	bias [%]	RMSE [cm]	R^2	slope	intercept
T1	2.51	0.17	7.4	0.30	0.94	1.01	0.13
T2	2.44	0.11	4.8	0.28	0.94	0.97	0.16
T3	2.48	0.15	6.3	0.27	0.94	0.99	0.14
EC	2.66	0.33	14.2	0.36	0.94	1.09	0.09
EC2	2.62	0.28	12.2	0.33	0.94	1.07	0.08
ZH	2.26	−0.07	−3.0	0.35	0.91	0.86	0.23
ZHW	2.67	0.34	14.4	0.31	0.95	1.09	0.10
B1	2.31	−0.02	−0.7	0.33	0.93	0.90	0.19
B2	2.25	−0.09	−3.7	0.35	0.92	0.87	0.19

Title Page

Abstract

Introduction

Conclusions

References

Tables

Figures

I◀

▶I

◀

▶

Back

Close

Full Screen / Esc

Printer-friendly Version

Interactive Discussion

Global convection
modelling

H. Tost et al.

Table 7. Energy budget of the atmosphere at the surface. All fluxes are area weighted 6 year averages. The unit is W/m^2 . The net solar radiation and the net thermal radiation are calculated by the radiation module, the latent heat flux is the evaporation multiplied with the latent heat of vaporisation (L). The residual sensible heat flux is calculated assuming a closed energy budget. Furthermore, the computed thermal radiation at the top of the atmosphere is presented.

Simulation	Net solar radiation at the surface	Net thermal radiation at the surface	Latent heat flux ($L \cdot$ evaporation)	Sensible heat flux (residual)	Thermal radiation top of the atmosphere
T1	167.9	-55.96	-86.92	-25.02	-235.0
T2	171.3	-57.24	-84.10	-29.94	-233.2
T3	171.2	-57.07	-84.74	-29.41	-233.5
EC	150.8	-50.20	-85.13	-15.51	-232.3
EC2	149.7	-49.63	-84.25	-15.81	-232.0
ZH	178.1	-61.87	-81.88	-34.32	-233.7
ZHW	169.1	-57.97	-77.56	-33.61	-227.1
B1	152.5	-50.13	-85.46	-16.94	-231.5
B2	157.1	-51.62	-88.49	-16.99	-236.5

Title Page

Abstract

Introduction

Conclusions

References

Tables

Figures

I◀

▶I

◀

▶

Back

Close

Full Screen / Esc

Printer-friendly Version

Interactive Discussion

Global convection
modelling

H. Tost et al.

Table 8. Statistics of the simulated temperature with T1 as a reference. Column 1 and 2 list the horizontally area weighted and vertically unweighted 6 year 3-D averages; column 3 and 4 show the 2-D area weighted 6 years averages.

Simulation Name	atmosphere (up to 10 hPa)		surface layer	
	Mean [K]	Bias [K]	Mean [K]	Bias [K]
T1	245.8	–	287.3	–
T2	245.6	–0.14	287.2	–0.10
T3	245.9	0.11	287.3	–0.00
EC	246.6	0.79	287.0	–0.30
EC2	246.2	0.46	286.8	–0.49
ZH	246.0	0.27	287.0	–0.26
ZHW	246.1	0.30	287.1	–0.19
B1	245.3	–0.50	286.9	–0.40
B2	245.0	–0.78	286.6	–0.66

Title Page

Abstract

Introduction

Conclusions

References

Tables

Figures

I◀

▶I

◀

▶

Back

Close

Full Screen / Esc

Printer-friendly Version

Interactive Discussion

Global convection
modelling

H. Tost et al.

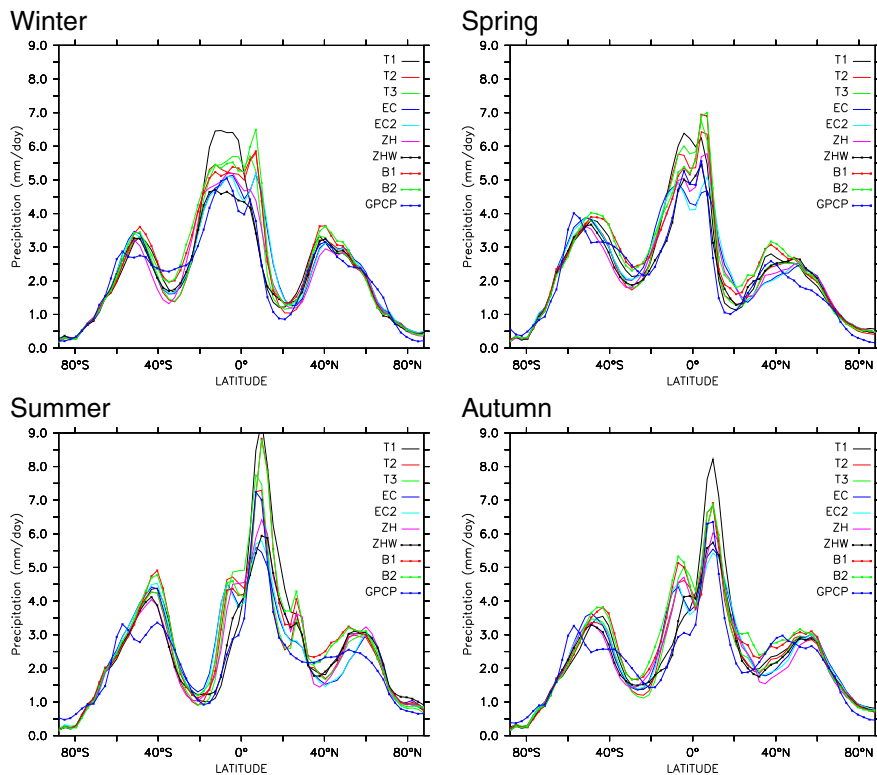


Fig. 1. Zonal average precipitation in mm/day for the four seasons (6 year average): for boreal winter (DJF), spring (MAM), summer (JJA) and autumn (SON).

[Title Page](#)[Abstract](#)[Introduction](#)[Conclusions](#)[References](#)[Tables](#)[Figures](#)[◀](#)[▶](#)[◀](#)[▶](#)[Back](#)[Close](#)[Full Screen / Esc](#)[Printer-friendly Version](#)[Interactive Discussion](#)

Global convection
modelling

H. Tost et al.

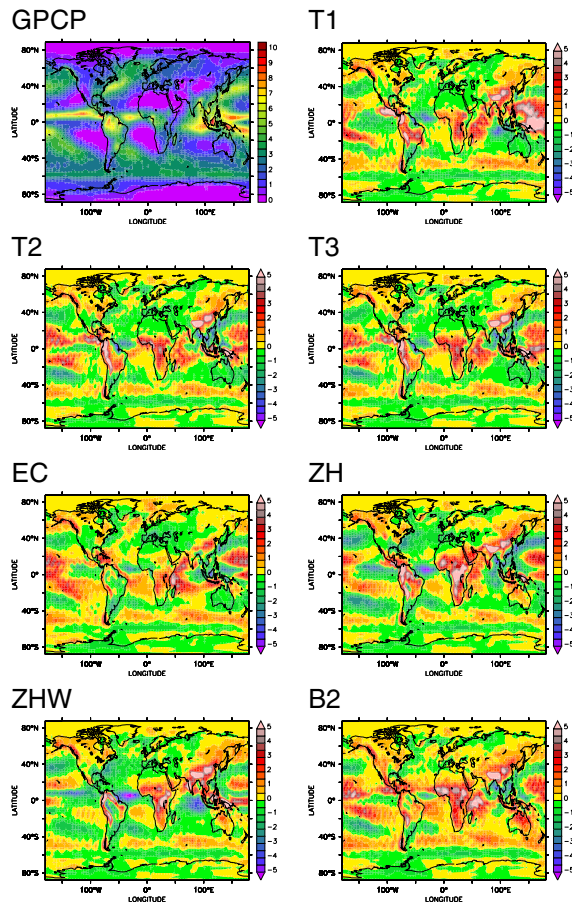


Fig. 2. Observed and simulated horizontal distribution of precipitation in mm/day (6 year average). The upper left panel shows the GPCP (observational data), the other panels the difference between the individual simulations and the observations (model minus observations).

[Title Page](#)[Abstract](#)[Introduction](#)[Conclusions](#)[References](#)[Tables](#)[Figures](#)[◀](#)[▶](#)[◀](#)[▶](#)[Back](#)[Close](#)[Full Screen / Esc](#)[Printer-friendly Version](#)[Interactive Discussion](#)

Global convection
modelling

H. Tost et al.

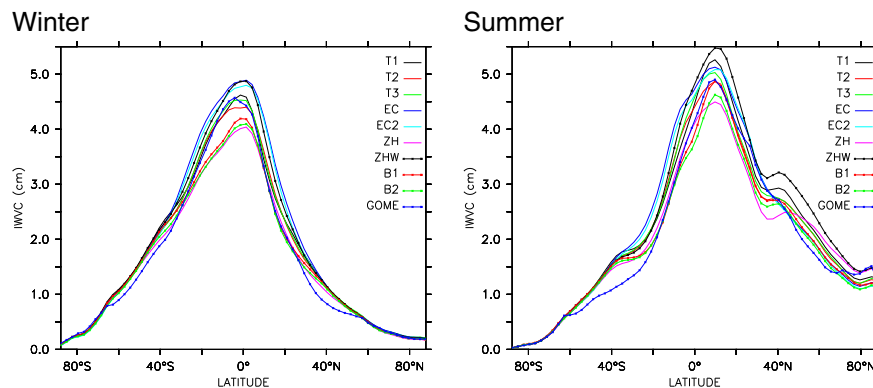


Fig. 3. Zonal average integrated water vapour column in cm for boreal winter (DJF) and summer (JJA) (5 year average).

[Title Page](#)[Abstract](#)[Introduction](#)[Conclusions](#)[References](#)[Tables](#)[Figures](#)[◀](#)[▶](#)[◀](#)[▶](#)[Back](#)[Close](#)[Full Screen / Esc](#)[Printer-friendly Version](#)[Interactive Discussion](#)

EGU

Global convection
modelling

H. Tost et al.

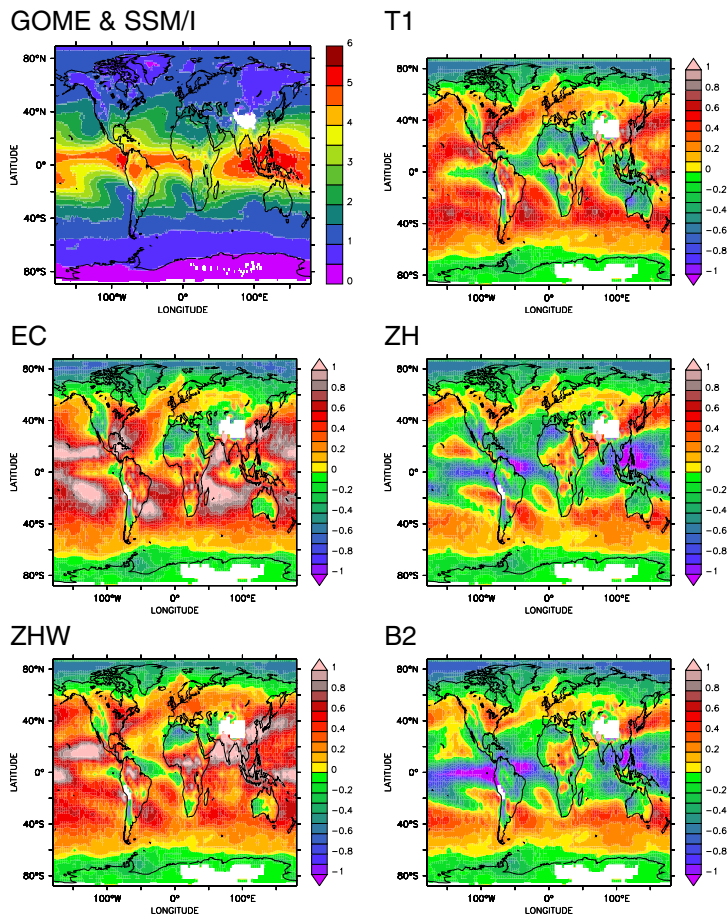


Fig. 4. Horizontal distribution of the annual average (5 years) IWVC in cm. The upper left panel shows the observed values, while the others depict the differences between the individual simulations and the observations (model minus observations) in cm. White areas are regions for which no observations are available.

[Title Page](#)[Abstract](#)[Introduction](#)[Conclusions](#)[References](#)[Tables](#)[Figures](#)[◀](#)[▶](#)[◀](#)[▶](#)[Back](#)[Close](#)[Full Screen / Esc](#)[Printer-friendly Version](#)[Interactive Discussion](#)

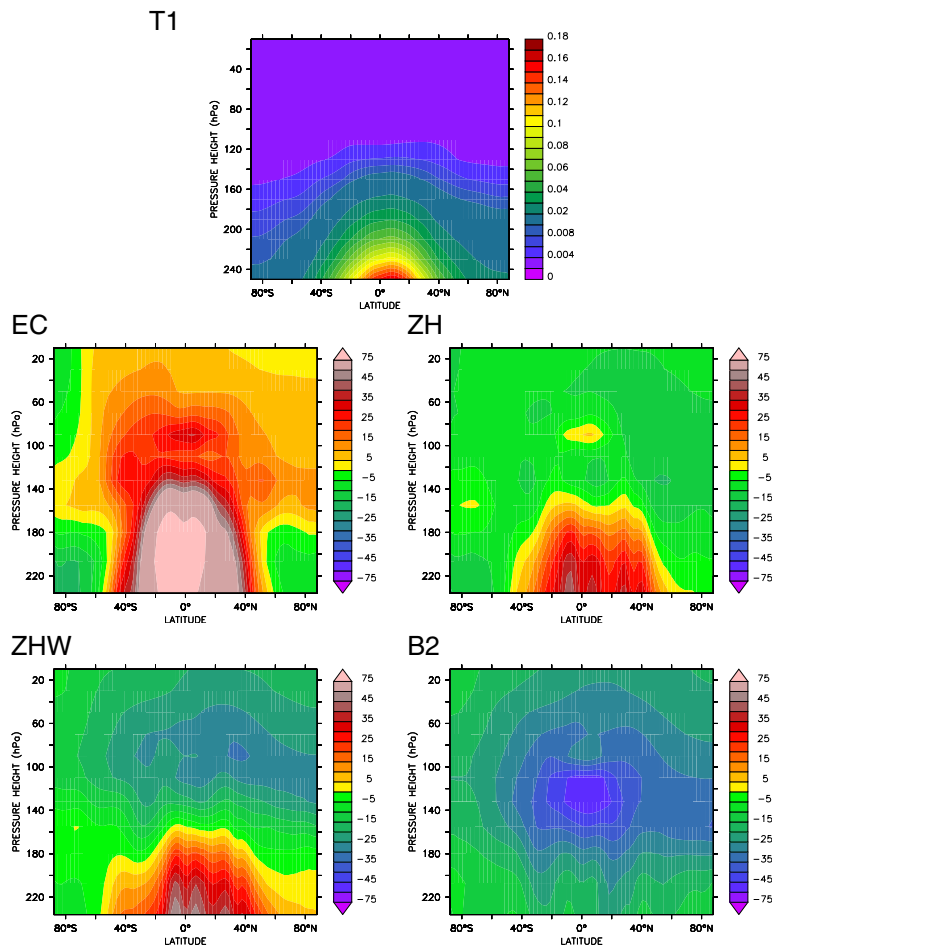


Fig. 5. Zonal average specific humidity (6 year average) above 250 hPa. The upper panel shows the zonal distribution from the T1 reference simulation in $g_{\text{water}}/kg_{\text{air}}$. The other panels depict the relative differences in % to this reference.

[Title Page](#)[Abstract](#)[Introduction](#)[Conclusions](#)[References](#)[Tables](#)[Figures](#)[◀](#)[▶](#)[◀](#)[▶](#)[Back](#)[Close](#)[Full Screen / Esc](#)[Printer-friendly Version](#)[Interactive Discussion](#)

Global convection
modelling

H. Tost et al.

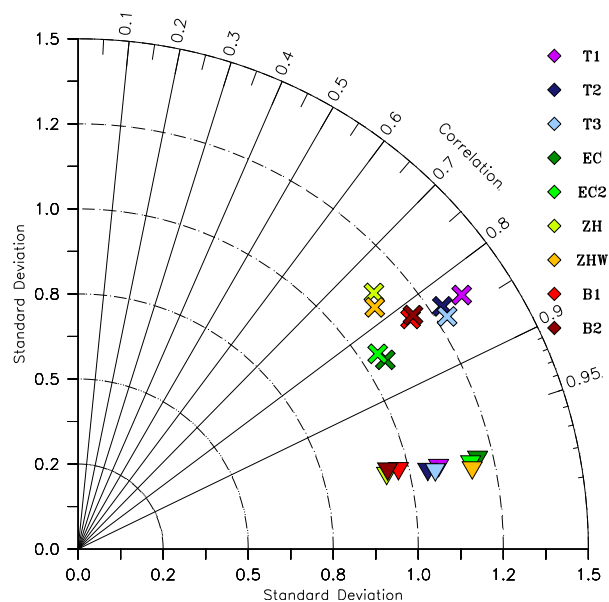


Fig. 6. Taylor diagram for the global precipitation (crosses) and water vapour column (triangles). The standard deviation of the model calculations is normalised with the observed standard deviation. The various simulations are indicated by different colours.

[Title Page](#)
[Abstract](#)
[Introduction](#)
[Conclusions](#)
[References](#)
[Tables](#)
[Figures](#)
[◀](#)
[▶](#)
[◀](#)
[▶](#)
[Back](#)
[Close](#)
[Full Screen / Esc](#)
[Printer-friendly Version](#)
[Interactive Discussion](#)

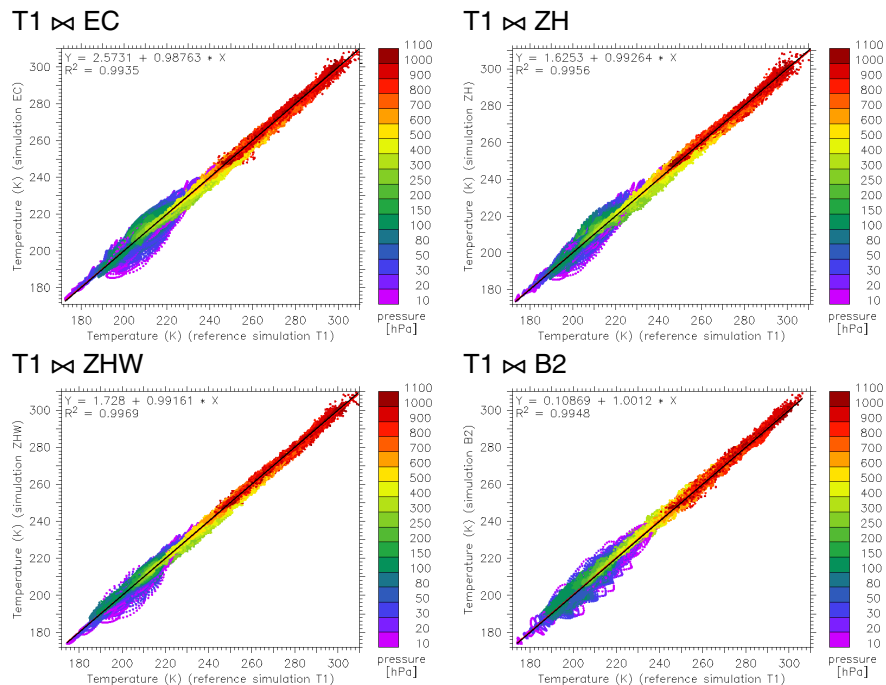


Fig. 7. Temperature correlation between the reference simulation (T1) on the horizontal axis and the individual simulations (EC, ZH, ZHW and B2) on the vertical axis, colour coded with pressure altitude. The monthly average temperatures of the evaluated time series have been transformed onto a $10^\circ \times 10^\circ$ grid. The black line depicts the one-to-one line.