

Superconductivity in a Molecular Metal Cluster Compound

O.N. Bakharev,^{1,*} D. Bono,¹ H.B. Brom,¹ A. Schnepf,² H. Schnöckel,² and L.J. de Jongh¹

¹*Kamerlingh Onnes Laboratory, Leiden University,
P.O. Box 9504, 2300RA Leiden, The Netherlands*

²*Institut für Anorganische Chemie, Universität Karlsruhe, 76128 Karlsruhe, Germany*

(Dated: February 28, 2006)

Compelling evidence for band-type conductivity and even bulk superconductivity below $T_c \approx 8$ K has been found in ^{69,71}Ga-NMR experiments in crystalline ordered, giant Ga₈₄ cluster-compounds. This material appears to represent the first realization of a theoretical model proposed by Friedel in 1992 for superconductivity in ordered arrays of weakly coupled, identical metal nanoparticles.

PACS numbers: 74.78.Na, 74.70.-b, 76.60.-k

In recent years it has become apparent that the chemical (bottom-up) route to nanostructures can be quite successful. Molecular metal cluster compounds form an excellent example in this respect [1]. These stoichiometric compounds form macromolecular solids, in which the cores of the macromolecules can be seen as metal nanoparticles. Often the cluster molecules are ionic and, together with suitable counter-ions, form crystalline 3D lattices. These “self-organized nanostructures” can thus be viewed as 3D-ordered arrays of identical metal nanoparticles, embedded in the dielectric matrix formed by ligand molecules plus counterions. Until recently, in all compounds studied so far electron transfer between clusters proved negligible, the materials being electrically insulating [2, 3]. Accordingly, the experiments were probing single-particle properties at the nano-scale, such as surface effects, quantum-size effects and the size-induced metal-nonmetal transition [4].

However, given the strong similarity of metal cluster compounds to e.g. the (alkali-doped) fullerenes (C₆₀), it was expected [2] that by doping or introducing mixed-valency, a novel class of materials showing (super)conductivity could be obtained. Indeed, a few years ago, the mixed-valent “giant” Ga₈₄ cluster compound Ga₈₄[N(SiMe₃)₂]₂₀-Li₆Br₂(thf)₂₀·2toluene was synthesized [5], its crystal and molecular structure being determined by X-ray diffraction [6]. The [Ga₈₄R₂₀]⁴⁻ molecules (called Ga₈₄⁴⁻ in what follows) form a fully ordered ionic crystal together with the counterions (2[Li(thf)₄]⁺ and 2[Li₂Br(thf)₆]⁺). The mixed valent property arises since the ion [Ga₈₄R₂₀]³⁻ (Ga₈₄³⁻) also exists [6], having the same molecular structure but different crystalline packing of the cluster molecules [6]. Since synthetic conditions for both moieties are different, samples obtained are “crystallographically pure”, meaning that by X-ray no trace of the other moiety can be detected. However, as evidenced by EPR, a small amount (1%) of mixed valency is still present, probably due to local departures from stoichiometry in the concentration of counterions.

In earlier resistivity and magnetization experiments on Ga₈₄⁴⁻ samples [7], indications were already found for

metallic behavior, and even superconductivity below a transition temperature $T_c \approx 7.2$ K, much higher than $T_c \approx 1.1$ K known for bulk α -Ga metal. The observed superconducting (SC) fraction was only 0.01% however, and, since it is known that Ga-metal in confined geometries tends to have higher T_c values, even as high as 6 K [8], these data were interpreted with caution and an explanation in terms of bulk metal inclusions, originating from possible deterioration and subsequent coalescence of clusters, could not be ruled out [18]. Additional experiments were needed therefore to provide unambiguous proof for the occurrence of bulk superconductivity related to weak intermolecular charge transfer, similar as in doped C₆₀ or other molecular (super)conductors. Such proof is presented here on basis of ^{69,71}Ga-NMR experiments in both the metallic conducting and the SC phases of these cluster solids.

NMR is an element-specific probe that can evidence two hallmarks of metallic conductivity. The magnetic hyperfine interaction between nuclear moments and conduction electron spins produces a shift $\delta\nu$ of the NMR frequency ν_0 . This Knight shift, $K_S = \delta\nu/\nu_0$, is proportional to the density of states at the Fermi-energy, $D(E_F)$. Secondly, this interaction leads to a linear T -dependence (Korringa-law) of the nuclear spin-lattice relaxation rate, $T_1^{-1} \propto aT$. The proportionality constant is $a = K_S^2/S$, where S is the Korringa constant. For free s -electrons, S is given theoretically by $\mu_B^2/\pi\hbar k_B\gamma^2 \approx 2.826 \times 10^{-6}$ sK for ⁷¹Ga (γ denotes the nuclear gyromagnetic ratio). Moreover, NMR can also probe the superconductivity: when below T_c the conduction electrons become spin-paired, both T_1^{-1} and K_S should decrease. Experimental details about the ^{69,71}Ga-NMR technique can be found in a previous brief note [9] on preliminary results for Ga₈₄⁴⁻ samples in the metallic conducting region ($T > 10$ K). Meanwhile several samples of both moieties have been studied and we present here representative results on three samples, labelled S1 (Ga₈₄⁴⁻), S2 (Ga₈₄³⁻) and S3 (Ga₈₄⁴⁻). High- T (~ 200 K) ⁷¹Ga spectra are shown in Fig. 1 and display two main lines, one being unshifted and the other shifted by 0.4 – 0.5 MHz. The relative weight of these lines is sample dependent.

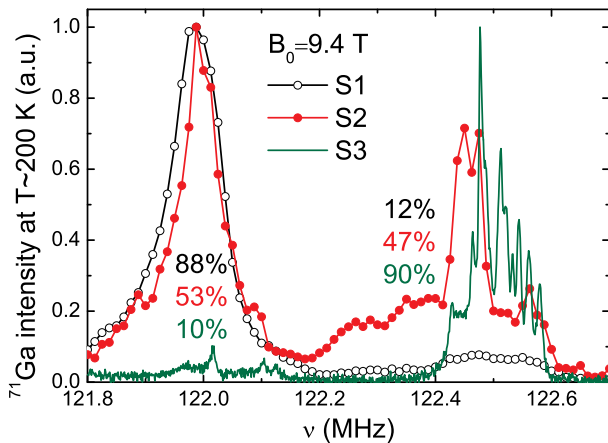


FIG. 1: High- T spectra for S1, S2 and S3, corresponding to an unshifted reference frequency $\nu_0 \approx 122$ MHz ($B_0 \approx 9.4$ T). They show two main lines, with varying relative weights.

Calibration of the Ga-NMR signals with an Al reference confirms, however, that the observed concentration of Ga nuclei in the combined spectra is as expected from the chemical formulae of the cluster compounds.

Representative T_1^{-1} data, measured on the maximum of the lines, are given in Fig. 2. The closed symbols refer to the unshifted line. The relaxation rate of these Ga-nuclei is one to two orders of magnitude smaller than in α -Ga metal [10] and does not follow the Korringa law. Hence, they lack the relaxation channel provided by conduction electron spins and only couple energetically to the phonons by quadrupolar relaxation, as proved by the measured ratio ${}^{69}T_1/{}^{71}T_1 \approx ({}^{71}Q/{}^{69}Q)^2 \approx 0.4$ (Q denotes the nuclear quadrupolar moment). The unshifted line is therefore ascribed to a “non-conducting” (NC) fraction of the sample. By contrast, the points measured on the shifted line (open symbols) obey very well the Korringa law $T_1^{-1} \propto aT$ in a wide T -range (below $T \sim 200$ K down to T_c), with $a = 4.45(20)$ s $^{-1}$ K $^{-1}$ for all samples (i.e. independent of the NC fraction). This line can thus be attributed to a conducting (C) phase of the sample.

The origin of the NC fraction turns out to be a lack of toluene molecules, normally present as a crystal solvent and apparently essential to produce an *ordered* 3D packing of the cluster molecules. We found that when the crystals are taken out of the toluene solution, toluene molecules rapidly diffuse out of the sample which thereby loses its perfect crystalline order, with accompanying loss of conducting properties. Indeed, as is well known, in case of a small (intermolecular) charge transfer, band-conductivity can be rapidly destroyed by even a small amount of disorder (Anderson localization). In the investigated samples the NC fraction varies from 88% down to 10% for the “purest” sample (S3, kept continuously in toluene liquid). Importantly, independent of the C/NC ratio, we find always the same types of behavior of T_1

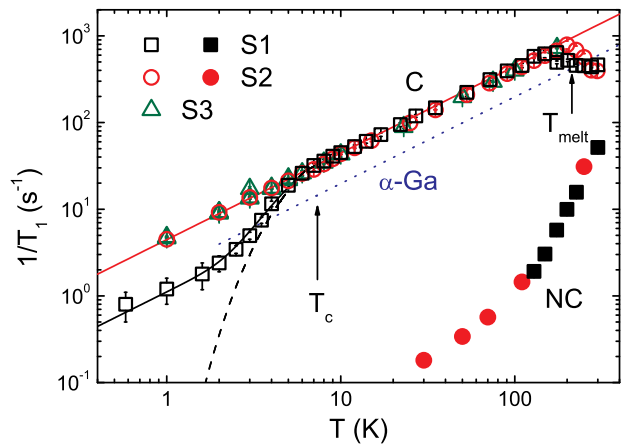


FIG. 2: T -dependence of the ${}^{71}\text{Ga}-T_1^{-1}$ measured on the maxima of the two lines displayed in Fig. 1. The open symbols follow the Korringa law when $T \geq T_c$ (and $B_0 \geq B_{c2}$), and refer to the C fraction (several fields $1.5 \text{ T} \lesssim B_0 \leq 9.4 \text{ T}$ yield the same Korringa constant). The SC transition at $T_c \approx 7.5$ K is observed in S1 in $B_0 \approx 2.39$ T. The dotted curve indicates the behavior of bulk α -Ga. The other curves are fits (see text). Closed symbols refer to the unshifted line (NC fraction).

for the NC fractions, as well as for the C fractions in the metallic conducting region ($T > 8$ K). This is a strong indication that the two phases exist separately, i.e. they are not mixed on a molecular level in the material. Most likely the NC phase is predominantly present at the surfaces of the crystallites, where toluene as crystal solvent is most readily removed. In the following, we only discuss the C fractions of the samples.

Interestingly, the value a found for the C fraction is about 2.3 times that of bulk α -Ga metal [10], indicating a larger $D(E_F)$ for the cluster compound. The value found for the ratio of the ${}^{71}\text{Ga}$ and ${}^{69}\text{Ga}$ rates, ${}^{69}T_1/{}^{71}T_1 \approx ({}^{71}\gamma/{}^{69}\gamma)^2 \approx 1.6$ confirms the magnetic origin (the coupling to the electron spin) of the nuclear relaxation. The ${}^{71}\text{Ga}$ Knight shift is ${}^{71}K_S = 0.39(3)\%$ for this line, using for calibration the metallic ${}^{63}\text{Cu}$ reference signal (${}^{63}K_S = 0.238\%$). We derive the Korringa constant, $S = K_S^2/a = 3.4(6) \times 10^{-6}$ sK. This is only $\sim 15\%$ higher than the theoretical (free-electron) value, indicating a predominantly s -like character of the itinerant electron density, with weak correlations. For comparison, for bulk α -Ga the shift is ${}^{71}K_S \approx 0.16\%$, consistent with a smaller $D(E_F)$, and the resulting Korringa constant is $\sim 60\%$ smaller than for the free electron case. A more accurate method to evaluate S is presented in Fig. 3, showing for several temperatures the variation of T_1T over the C-line in the ${}^{71}\text{Ga}$ spectrum for the (purest) sample S3. Despite the complexity of the spectrum (see below), all data points are in excellent agreement with metallic behavior with the same Korringa constant. A fit $(T_1T)^{-1} = \frac{(\nu - \nu_0)^2}{S\nu_0^2}$ is well obeyed

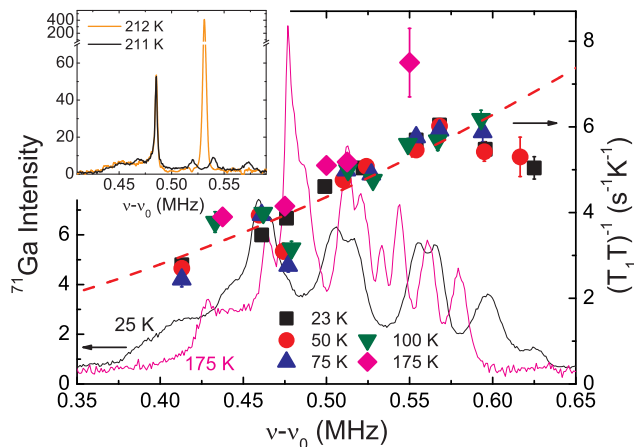


FIG. 3: Left axis (lines) and inset: T -dependence of the ^{71}Ga spectrum of the C fraction in S3 ($\nu_0 \approx 122$ MHz). The motional narrowing of the lines is very pronounced above $T_{\text{melt}} \approx 212$ K (inset) and is more gradual below. Right axis (closed symbols): frequency dependence of $(T_1T)^{-1}$ over the ^{71}Ga spectrum in S3, for $T_c < T < T_{\text{melt}}$. The dashed line is a fit (see text).

with $S = 3.85(9) \times 10^{-6}$ sK. This is in good agreement with the former result based on measurements of the T -dependence of T_1 on the maximum of the line.

Another interesting feature is the strong effect of motional narrowing observed in the T -dependence of the spectra, also shown in Fig. 3. The spectrum at low T is ~ 200 kHz wide, with a fine structure that we attribute to the different Ga-sites (with different interatomic distances) in the cluster cores [5, 6]. For S3 (highest C fraction), the spectrum can be decomposed into at least 10 different lines. Within a very narrow range of temperature (~ 1 K), the whole spectrum collapses above $T_{\text{melt}} \approx 212$ K into two narrow lines, at 122.486 and 122.533 MHz [Fig. 3(inset)], the upper one having a linewidth at room- T of only 1 kHz in a field of 9.4 T. The motional rate estimated from the linewidths increases from 0.4 MHz around T_{melt} to 10 MHz at room- T . Moreover, this line contains $\sim 70\%$ of the Ga nuclei. Considering that $\sim 25\%$ of the Ga atoms form the nearest-neighbor shell around the central Ga_2 dimer [5, 6], and that X-ray studies show the freezing of rotations of the Ga_2 dimer within this cage in this T -range, we associate the lower frequency line to the nearest-neighbor sites of the central dimer. These would be most affected by the dimer motions, explaining the weak motional narrowing observed even below T_{melt} in particular for this subspectrum (Fig. 3). As seen in Fig. 2, the transition at T_{melt} is accompanied by a drop (factor 3) in T_1^{-1} of the C fraction. Apparently, the onset of the internal motions affects in some as yet unknown way the $D(E_F)$ value.

The combination of all the above results leaves no doubt that the observed spectra are due to Ga-nuclei

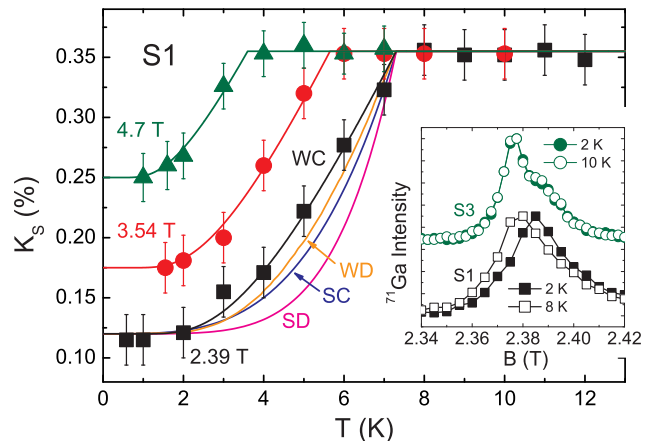


FIG. 4: T - and field-dependences of the Knight shift K_S for S1. Data for lowest field are compared with BCS theory for weak and strong coupling (symbols “W” and “S”) in the clean and dirty limits (symbols “C” and “D”). The “WC” case is included for the other fields. Inset: ^{71}Ga spectra at low- T . No shift is found for S3, having $B_{c2} \sim 0.25$ T $\ll B_0 \approx 2.39$ T.

belonging to the cluster molecules and not to inclusions/particles of bulk Ga-metal. The T -dependence of T_1^{-1} is typical for nuclear relaxation via conduction electrons. The fact that the conductivity is lost when the ordered packing of the clusters is disturbed proves that it arises from intercluster charge transfer.

Turning next to the SC properties, we remark that for all samples, magnetization data show the occurrence of bulk superconductivity of type II, with $T_c \approx 7.4$ K, 7.8 K and 7.95 K for S1, S2 and S3, and a lower critical field B_{c1} of the order of a few 0.01 T. The upper critical field B_{c2} appears to vary strongly, between ~ 0.3 T (S2 and S3) up to a few Tesla (S1), i.e. (very) much lower than the value of 13.8 T reported in [7]. In fact, these low values for B_{c2} are the reason why by NMR we could only detect superconductivity in samples with sufficiently high B_{c2} , since sensitivity requirements limited our NMR experiments to $B_0 \gtrsim 2$ T. As an example, the T - and field-dependencies of T_1^{-1} and K_S are shown in Figs. 2 and 4 for the C fraction of S1 for $T \lesssim 10$ K. They provide definite proof for the occurrence of bulk superconductivity below ≈ 7.5 K for this sample, up to several Tesla. $K_S(T)$ can be well fitted with the prediction from the BCS model with s -wave symmetry and weak electron-phonon coupling, implying a SC gap $\Delta/k_B = 1.76 T_c \sim 13$ K. Several other samples showed similar dependencies of the shift. The data in Fig. 4 do not allow to distinguish between the predictions for the “clean” and “dirty” limits for the weak coupling model, but the strong coupling case is clearly excluded. We note that in Fig. 2 we do not observe a coherence peak in the T -dependence of T_1^{-1} around T_c . As recently discussed in [11], a strongly reduced coherence peak in T_1^{-1} , in combination with a gapped

behavior (sharp drop) at a lower temperature than T_c , is typical for an s -wave superconductor. As shown by the continuous curve in Fig. 2, our T_1 data can indeed be fitted, for $T \lesssim 0.85T_c$ by the sum of an exponential ($\propto \exp(-\Delta/k_B T)$, dashed curve) with $\Delta/k_B = 13 \pm 2$ K and a linear term, accounting for the relaxation of the normal electrons in the vortex cores [11].

In view of the strong effect of the toluene molecules on the conductivity, we attribute the strong sample dependence of B_{c2} to a varying degree of lattice defects, related to missing toluene molecules in the otherwise ordered lattices of the conducting Ga_{84} phases. We recall that theoretical models for “dirty” superconductors predict a B_{c2} inversely proportional to the electronic mean free path [12], whereas the values of T_c and the SC energy gap Δ should not be affected much by even high concentrations of defects (provided these are nonmagnetic), as observed. Though we expect the NC fractions to be present as a separate (surface) phase, a higher fraction of the (non-crystalline) NC phase may well entail a higher amount of lattice defects in the (crystalline) C phase of the sample. Indeed, S1 had the highest amount ($\sim 88\%$) of the NC phase [19]. We expect the sample studied in [7], with a reported $B_{c2} \approx 13.8$ T, to have contained an even larger concentration of defects. As a check on this interpretation, Muon Spin Relaxation experiments were performed at the PSI facility in Switzerland on S3 in fields from zero to 0.3 T and $T > 2$ K. The results will be reported elsewhere [13], but we mention here that also these data clearly prove the presence of bulk superconductivity with $B_{c2} \sim 0.25$ T and $B_{c1} \sim 50$ mT. Using theoretical expressions for the critical fields of a type II superconductor [12, 14], one obtains $\lambda \approx 80$ nm and $\xi \approx 40$ nm for the London penetration depth and the SC coherence length. Both values are much larger than the cluster core ($\varnothing \approx 1.4$ nm) and the average distance between the core centers (≈ 2.3 nm), in agreement with bulk superconductivity for the *crystalline array* of clusters. The quotient $\kappa = \lambda/\xi \approx 2$ indicates superconductivity of type II.

Summarizing, the above experiments provide compelling evidences for a band-type conductivity by weak intercluster charge transfer. How this charge transfer process occurs and via which intermediates is at present unknown, but it is clearly very sensitive to small local changes in the intercluster packing. This is reminiscent of the orientational disorder effects in C_{60} . Comparing the molecular structure with that of C_{60} , the intercluster transfer integral (i.e. the bandwidth) is expected to be much smaller, of order $t \sim 1 - 10$ meV, considering that the Ga_{84} cluster cores are separated by surrounding ligand shells. On the other hand, the on-site Coulomb interactions will also be smaller in view of the larger cluster size. This may explain the -at first sight surprising- result that we find no evidence for strong electron correlation effects, in spite of the very narrow bandwidth.

Our findings present several important challenges to

theory, such as the occurrence of bulk superconductivity with relatively high T_c at such small t values, and the nature of the SC pairing mechanism. Assuming the latter to be phonon-mediated, the Ga_{84} compound appears an almost perfect first experimental realization of the theoretical model advanced by Friedel [15] shortly after the discovery of superconductivity in fullerenes. He showed that for a *crystalline ordered array of identical metal nanoclusters* even a weak intercluster charge transfer can yield a large T_c , provided the degeneracy of molecular levels near E_F is sufficiently large. In this respect we mention that a larger value for $D(E_F)$ than for α -Ga was obtained for the Ga_{84} compound from Density Functional calculations [16]. Quite recently, the same idea of obtaining a high T_c by increasing the $D(E_F)$ of the molecular-level-derived band through reduction of the transfer integral has been proposed [17] for a novel hybrid compound, that would consist of C_{60} molecules embedded in a metal-organic framework serving to keep them at a larger (tunable) distance.

This work is part of the research program of the “Stichting FOM” and is partially funded by the EC-RTN “QuEMolNa” (No. MRTN-CT-2003-504880), the EC-Network of Excellence “MAGMANet” (No. 515767-2), the DFG-Centre of Functional Nanostructures (Karlsruhe).

* Presently at: Dept. of Chemistry, Univ. of Aarhus, Denmark

- [1] G. Schmid, J. Chem. Soc., Dalton Trans. p. 1077 (1998); G. Schmid and L. F. Chi, Adv. Mater. **10**, 515 (1998); A. Ecker, E. Weckert, and H. Schnöckel, Nature **387**, 379 (1997); A. Schnepf and H. Schnöckel, Angew. Chem. Int. Ed. **41**, 3533 (2001); P. Braunstein, L. A. Oro, and P. Raithby, eds., *Metal Clusters in Chemistry*, vol. I-III (Wiley-VCH and Weinheim, 1999).
- [2] L. J. de Jongh, ed., *Physics and Chemistry of Metal Cluster Compounds* (Kluwer, Dordrecht, 1994).
- [3] J. A. Reedijk et al., Phys. Rev. B **57**, R15116 (1998).
- [4] F. M. Mulder et al., Nature **367**, 716 (1994); Y. Volokitin et al., Nature **384**, 621 (1996); F. C. Fritschij, H. B. Brom, L. J. de Jongh, and G. Schmid, Phys. Rev. Lett. **82**, 2167 (1999); P. M. Paulus et al., Phys. Rev. B **64**, 205418 (2001).
- [5] A. Schnepf and H. Schnöckel, Angew. Chem. Int. Ed. **40**, 712 (2001).
- [6] A. Schnepf et al., Inorg. Chem. **42**, 7731 (2003).
- [7] J. Hagel et al., J. Low Temp. Phys. **129**, 133 (2002).
- [8] E. V. Charnaya et al., Phys. Rev. B **58**, 467 (1998).
- [9] O. N. Bakharev et al., Eur. Phys. J. D **24**, 101 (2003). Unfortunately, a misprint occurred in this paper: all T_1^{-1} values should be multiplied by ~ 7.4 .
- [10] R. H. Hammond, E. G. Wikner, and G. M. Kelly, Phys. Rev. **143**, 275 (1966).
- [11] K. Magishi et al., Phys. Rev. B **71**, 024524 (2005).
- [12] M. Tinkham, *Introduction to Superconductivity* (1975), McGraw-Hill, New York.

- [13] D. Bono et al., to be published.
- [14] E. H. Brandt, Phys. Rev. B **68**, 054506 (2003).
- [15] J. Friedel, J. Phys. II France **2**, 959 (1992).
- [16] J. Frenzel, S. Gemming, and G. Seifert, Phys. Rev. B **70**, 235404 (2004).
- [17] S. Hamel, V. Timoshevskii, and M. Côte, Phys. Rev. Lett. **95**, 146403 (2005).
- [18] The Ga_{84} compounds are highly air sensitive.
- [19] It was studied before the problem of the missing toluene molecules was realized, and had been taken out of the toluene solution.